

**FIELD OBSERVATION REPORT****2018.11**

■ TO:	Kenton County Board of Education 1055 Eaton Drive Ft. Wright, KY 41017	■ DATE:	2018.11.14
ATTENTION:	Mr. Rob Haney		
■ FROM:	Ralph Cooper rcooper@pca-arch.com 1881 Dixie Highway, Suite 130 Fort Wright, KY 41011 V: 859.431.8612 • F: 859.431.8611	■ PROJECT:	Kenton County School District Hinsdale Elementary
COPIES TO:	Mr. Danny Mann	PROJECT NO.:	2017-074

■ WE TRANSMIT THE ATTACHED ITEMS VIA: **EMAIL****PURPOSE**

- ☐ For your use
- ☐ As requested
- ☐ For review and comment
- ☐ For information
- ☒ For record
- ☐ For approval
- ☐

DISPOSITION

- ☐ No exceptions noted
- ☐ Exceptions noted,
Revise as indicated.
- ☐ REJECTED:
REVISE AND RESUBMIT
- ☐

COPIES	DATE	DESCRIPTION	PAGES
1	2018.11	Field Observation Report	11

Division 02: Site Work and Demolition*02.01: – No items noted.***Division 03: Concrete***03.01: 2018.11.05 – The remaining concrete sidewalks have been poured alongside the drive.**03.02: 2018.11.05 – The concrete stairs were poured. The forms bowed out along the stair nosings. The contractor was notified the attempted patch was unacceptable. The subcontractor agreed to tear out the work and replace it without cost.***Division 04: Masonry***04.01: No items noted.***Division 05: Metals***05.01: 2018.11.05 – Installation of the stainless steel handrails continues. Some of the joints and welds do not look good. The contractor spoke with the sub-contractor and were told any deficiencies will be corrected.**05.02: 2018.11.11 – Repair of the stainless steel handrails has started.***Division 06: Carpentry***06.01: 2018.11.05 - No items noted.***Division 07: Thermal and Moisture Protection***07.01: 2018.10.31 – Installation of the metal siding has been started on the back of the building.*



PCA ARCHITECTURE

07.02: 2018.10.31 – Roofing work has been completed except for installation of the copings.

07.03: 2018.10.31 – The joint between the perimeter deck and walls has been insulated.

07.04: 2018.11.05 – Caulking of the interior masonry joints has started.

Division 08: Doors and Windows

08.01: 2018.10.31 – The main entry storefront frame has been installed. The work was poorly done. The contractor was notified the installation and workmanship has been rejected.

08.02: 2018.10.31 – The sill flashing for the windows still has not been installed.

08.03: 2018.11.11 – The entry storefront deficiencies still need to be corrected.

Division 09: Finishes

09.01: 2018.10.31 – Installation of ceiling and bulkhead framing continues.

09.02: 2018.10.31 – Installation of the gypsum board continues. Taping of the joints has started.

09.03: 2018.11.05 – Installation and finishing of the gypsum board continues. Gypsum board is being installed on the bulkheads.

09.04: 2018.11.11 – Finishing of the gypsum board has started. Painting was scheduled to start tomorrow but I pointed out that all areas of gypsum board exposed to view needed a Level 5 finish – instead of the Level 4 currently in place. The contractor notified the drywall finisher of the need to install the Level 5 finish.

09.05: 2018.11.11 – The walls in the mechanical room have been painted.

Division 15: Plumbing and HVAC

15.01: 2018.10.31 – Insulation of the ductwork is in progress.

15.02: 2018.11.05 – Installation of the ductwork continues.

15.03: 2018.11.11 – The HVAC units have been set in the Mechanical Room.

Division 16: Electric

16.01: 2018.10.31 – The solar tubes in the Lobby have been installed.

16.02: 2018.11.11 – Wiring has been installed for the exterior sign.

CONSTRUCTION PHOTOS



PCA ARCHITECTURE



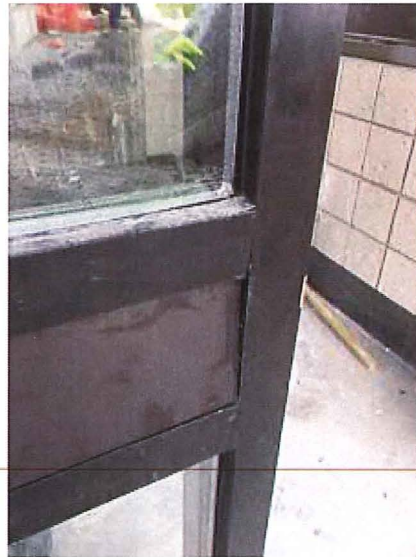
2018.10.31 – Installation of the metal siding has started on the rear of the building.



2018.10.31 – View of the masonry at the south elevation.



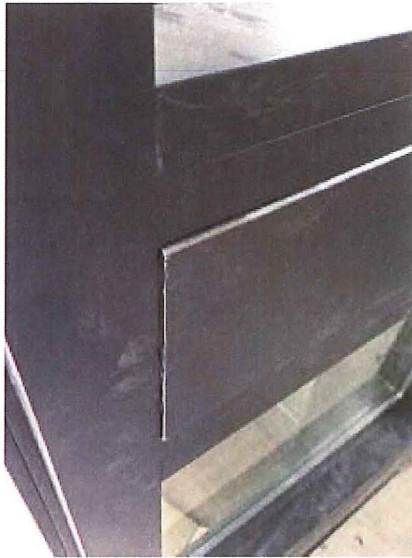
2018.10.31 – View of the light fixtures along the handicap ramp



2018.10.31 – View of the unacceptable entrance storefront work.



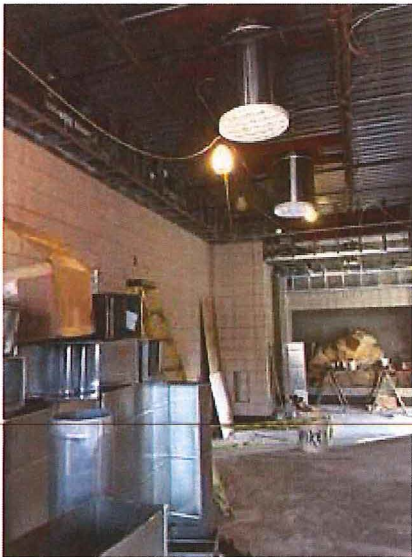
PCA ARCHITECTURE



2018.10.31 – View of the unacceptable entrance storefront work.



2018.10.31 – View of the unacceptable entrance storefront work.



2018.10.31 – View of the solar tubes in the Lobby area



2018.10.31 – View of the solar tubes in the Lobby area



PCA ARCHITECTURE



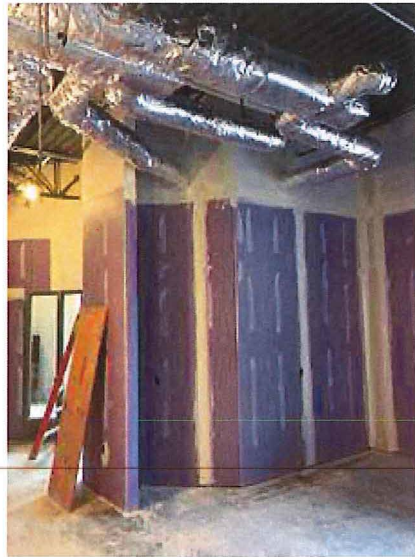
2018.10.31 – Installation and finishing of the gypsum board continues.



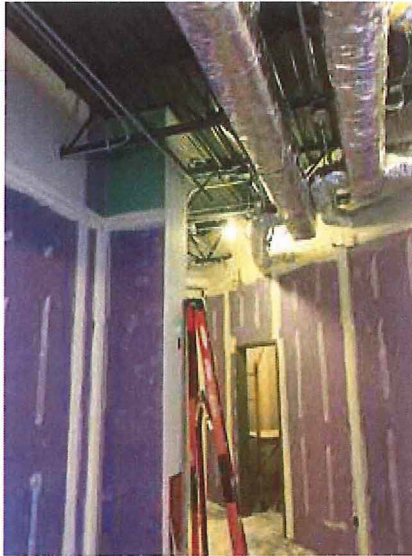
2018.10.31 – Installation of ceiling and bulkhead framing continues.



2018.10.31 – View of the metal siding as seen from the interior.



2018.10.31 – Ductwork has been insulated.



2018.10.31 – Installation and finishing of the gypsum board continues.



2018.10.31 – The joint between the metal roof deck and exterior walls has been insulated.



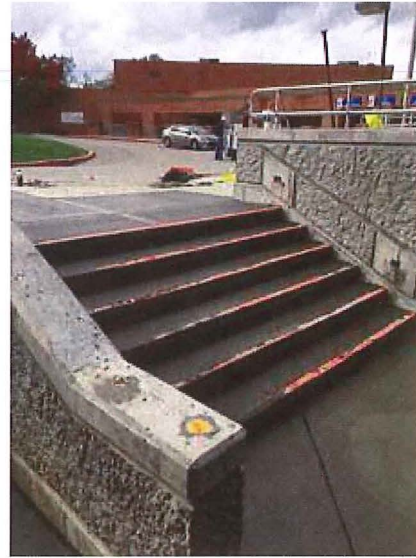
2018.11.05– The remaining concrete walk has been poured.



2018.11.05– The remaining concrete walk and stairs has been poured.



2018.11.05 – Repair of the stainless steel handrails is in progress.



2018.11.05 – The face of the riser of several steps is bowed out. The work and attempted patch was rejected. The contractor agreed to replace the work.



2018.11.05 – Finishing of the gypsum board continues.



2018.11.05 – Finishing of the gypsum board continues.



PCA ARCHITECTURE



2018.11.05 – Finishing of the gypsum board continues.



2018.11.05 – Installaton of the ductwork continues.



2018.11.05 – Finishing of the gypsum board continues.



2018.11.05 – Installation of the metal siding continues.



PCA ARCHITECTURE



2018.11.11 – Finishing of the drywall continues.



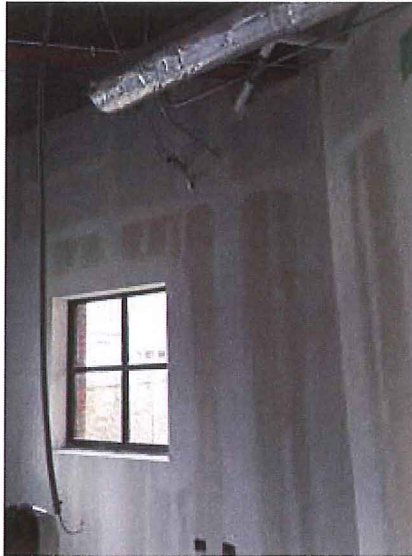
2018.11.11 – Caulking of the interior masonry is in progress.



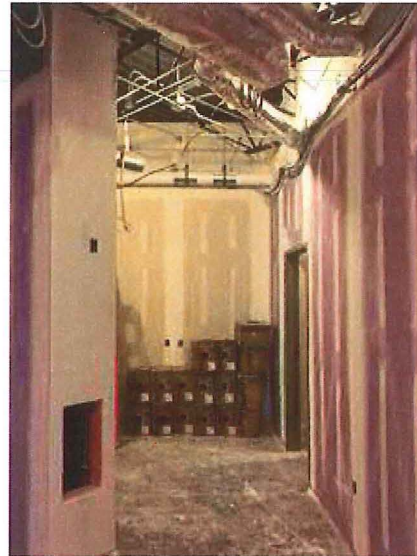
2018.11.11 – Finishing of the drywall continues. The Level 5 finish still needs to be completed.



2018.11.11 – Finishing of the drywall continues. The Level 5 finish still needs to be completed.



2018.11.11 – Finishing of the drywall continues. The Level 5 finish still needs to be completed.



2018.11.11 – Finishing of the drywall continues. The Level 5 finish still needs to be completed.



2018.11.11 – The HVAC units have been installed.



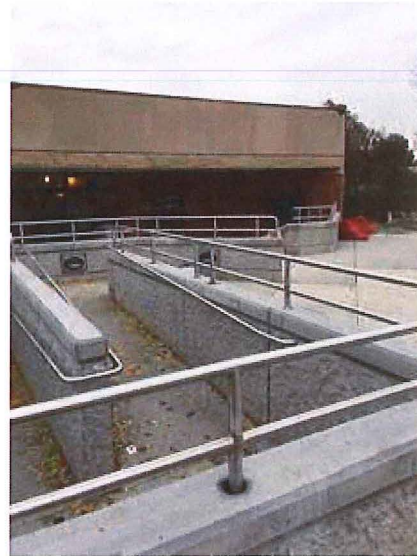
2018.11.11 – The HVAC units have been installed.



PCA ARCHITECTURE



2018.11.11 – View looking back towards the entry.



2018.11.11 – View looking back towards the entry.



2018.11.11 – View of the exterior metal siding.

- ☐ Please acknowledge receipt of transmitted items.
- ☐ Return transmitted items to PCA ARCHITECTURE ^{PSC}.

END