



NEW:  
7/28/2021

JOB TITLE:	SUPERVISOR HOME/HOSPITAL
DIVISION:	EXCEPTIONAL CHILD EDUCATION
SALARY SCHEDULE/GRADE:	IV, GRADE 8
WORK YEAR:	220 DAYS
FLSA STATUS:	EXEMPT
JOB CLASS CODE:	
BARGAINING UNIT:	CERX

SUBMITTED: 7/27/2021

SCOPE OF RESPONSIBILITIES
Provides technical assistance to District and school staff in meeting the needs of students in the Home/Hospital program and ensures instruction is in compliance with federal law, state statutes and District policies and procedures. Monitors implementation and effectiveness of Home/Hospital program; professional learning; supervises and directs the work of support staff as assigned to improve outcomes of students assigned to Home/Hospital.

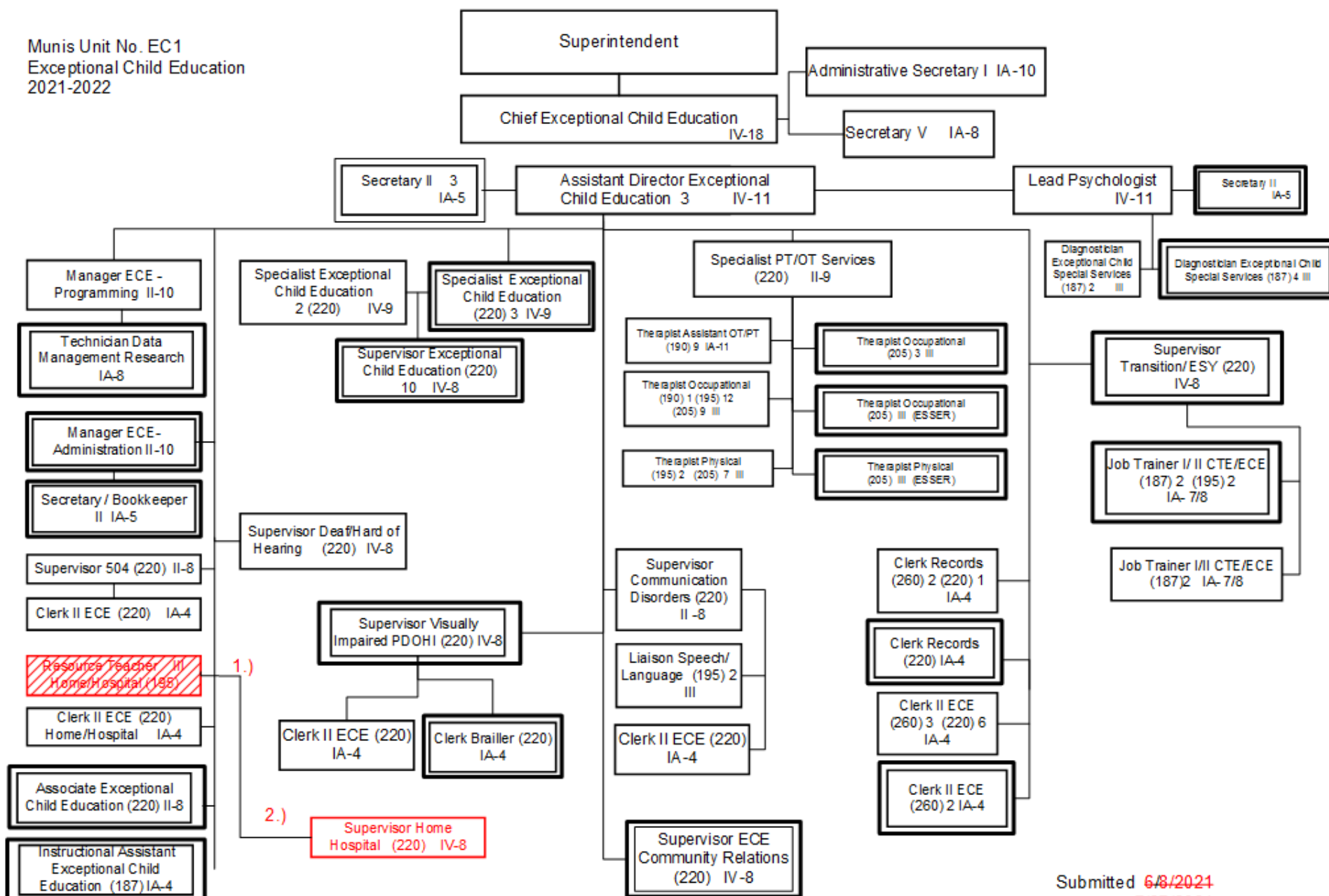
PERFORMANCE RESPONSIBILITIES & EVALUATION CRITERIA
Assists designated supervisor in short-range and long-range planning to improve outcomes for students enrolled in Home/Hospital instruction
Assists in coordination of programming and supports programming on behalf of students enrolled in Home/Hospital
Assures compliance with District policies/procedures, Kentucky Administrative Regulations (KAR), and pertinent federal legislation
Provides administrative management and instructional leadership for total operation of the Home/Hospital program
Collaborates with school and District staff to provide professional learning and technical assistance to address achievement and opportunity gaps and improve outcomes for students enrolled in Home/Hospital
Researches current practices in Home/Hospital area(s) to address achievement and opportunity gaps and improve outcomes for students enrolled in Home/Hospital
Coordinates with schools, parents, health care professionals and other outside agencies to resolve issues, develop appropriate programming and to provide instructional services to students enrolled in home/hospital services
Ensures all areas of student and fiscal records are in compliance with federal law, state regulation and District policies/procedures as related to Home/Hospital
Completes all trainings and other compliance requirements as assigned by the designated deadline
Evaluates staff as assigned
Performs other duties as assigned by supervisor

PHYSICAL DEMANDS
The work is primarily sedentary. The work at times requires bending, squatting, crawling, climbing, reaching with the ability to lift, carry, push or pull light weights. The work requires the use of hands for simple grasping and fine manipulations. The work requires the ability to model and demonstrate safe crisis management techniques and strategies.

MINIMUM QUALIFICATIONS
Master's Degree with a Kentucky certification in Administration and Supervision (Principal Certification) or Director of Special Education or Exceptional Child Consultant or Instructional Supervisor
Five (5) years of successful experience in area of assignment
Knowledge of federal and state laws regarding home/hospital programs
Effective communication skills

DESIRABLE QUALIFICATIONS
Demonstrated leadership ability
Experience in a diverse workplace

Munis Unit No. EC1  
Exceptional Child Education  
2021-2022



1.) Delete Resource Teacher Home Hospital (195)

2.) Add Supervisor Home Hospital (220) IV-8

Summary:

General Fund Positions: 78

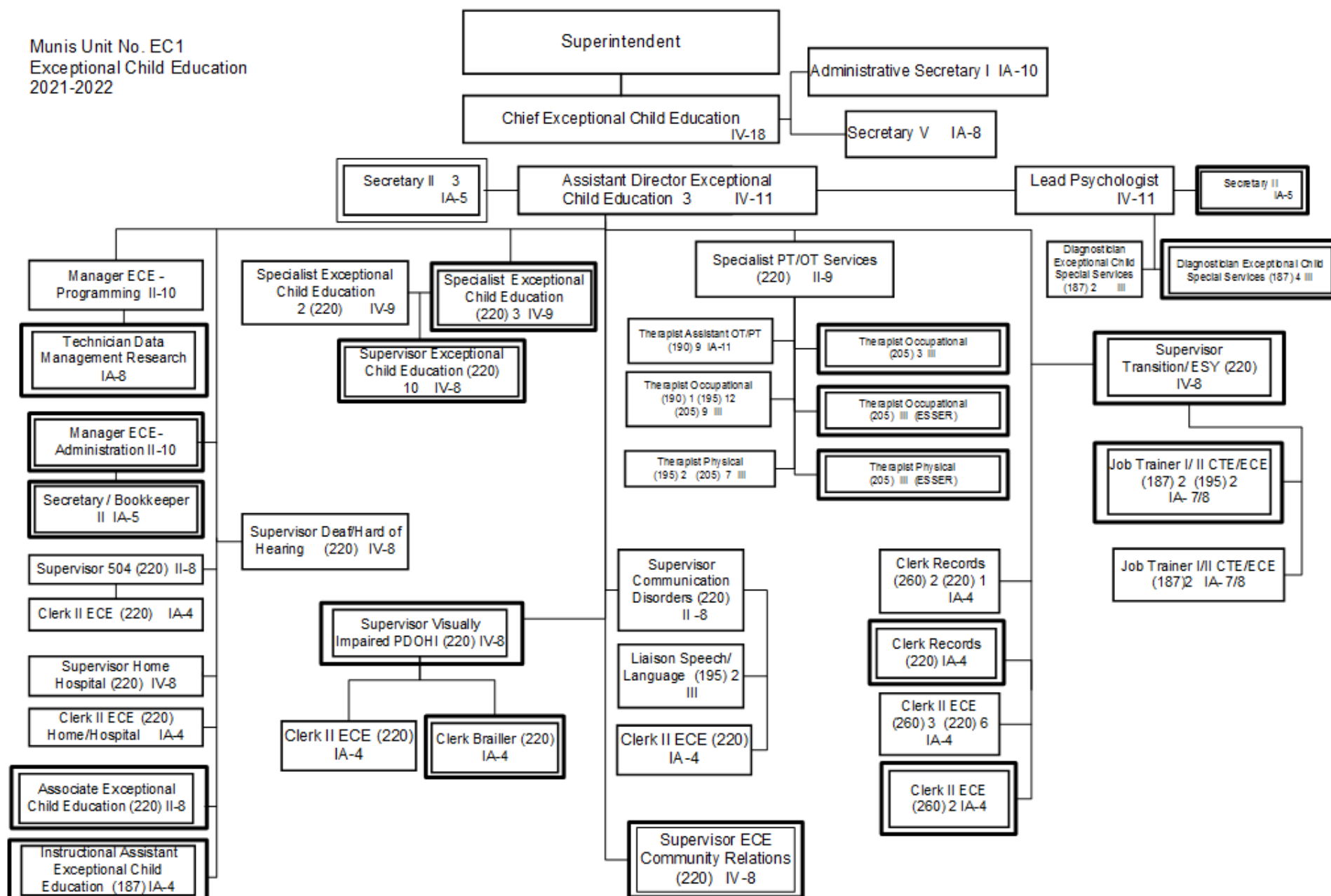
Categorical Fund Positions: 42

Submitted ~~6/8/2021~~

7/27/2021

Effective ~~7/1/2021~~

9/1/2021



Summary:

General Fund Positions: 78  
Categorical Fund Positions: 42