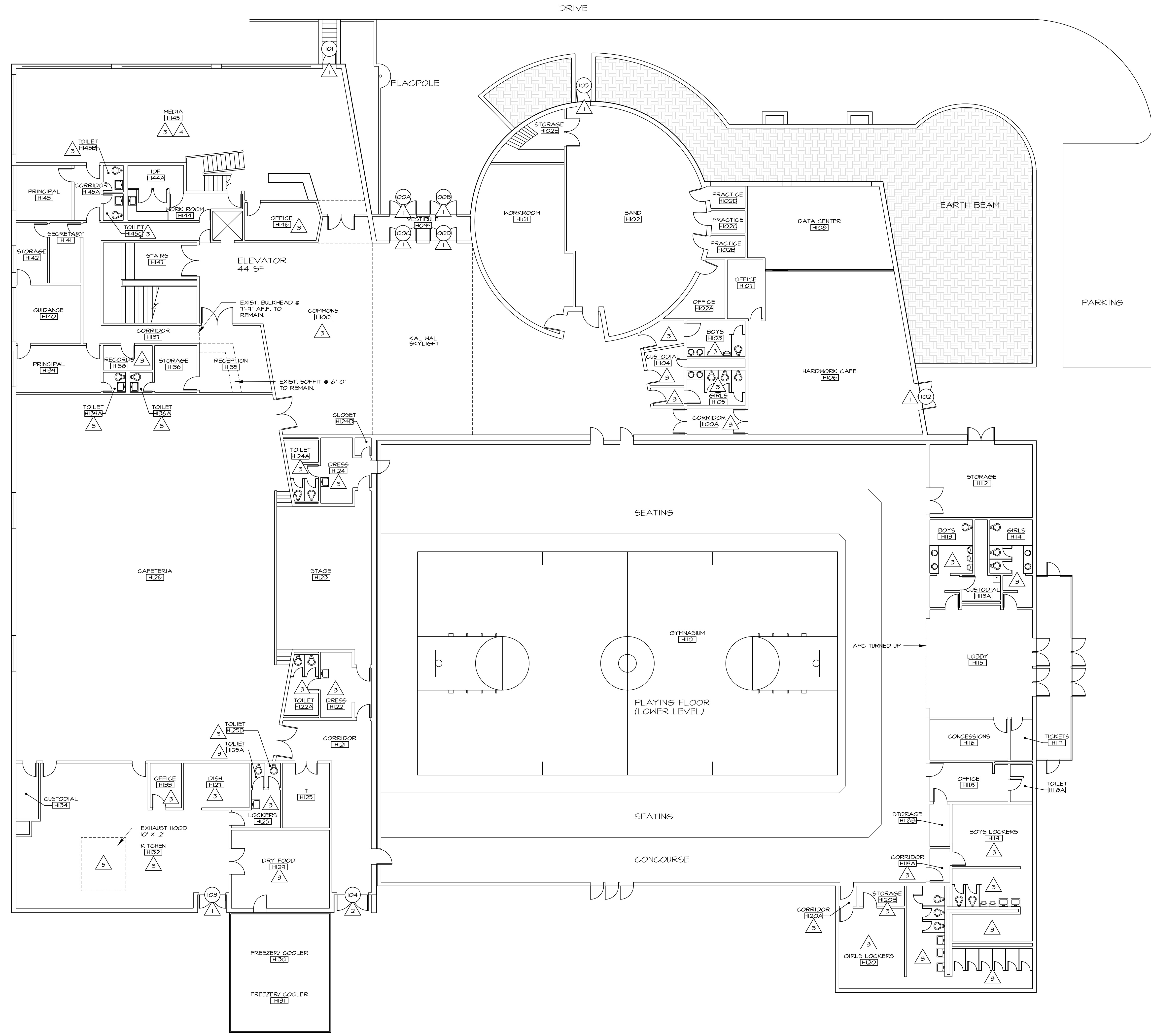


STRUCTURAL ENGINEER:

WILKIE STRUCTURAL ENGINEERING, INC.
420 MAIN STREET, SUITE 1010
EVANSVILLE, INDIANA 47708
812-423-6347 (F)812-422-9236

SUPERINTENDENT

[illegible]



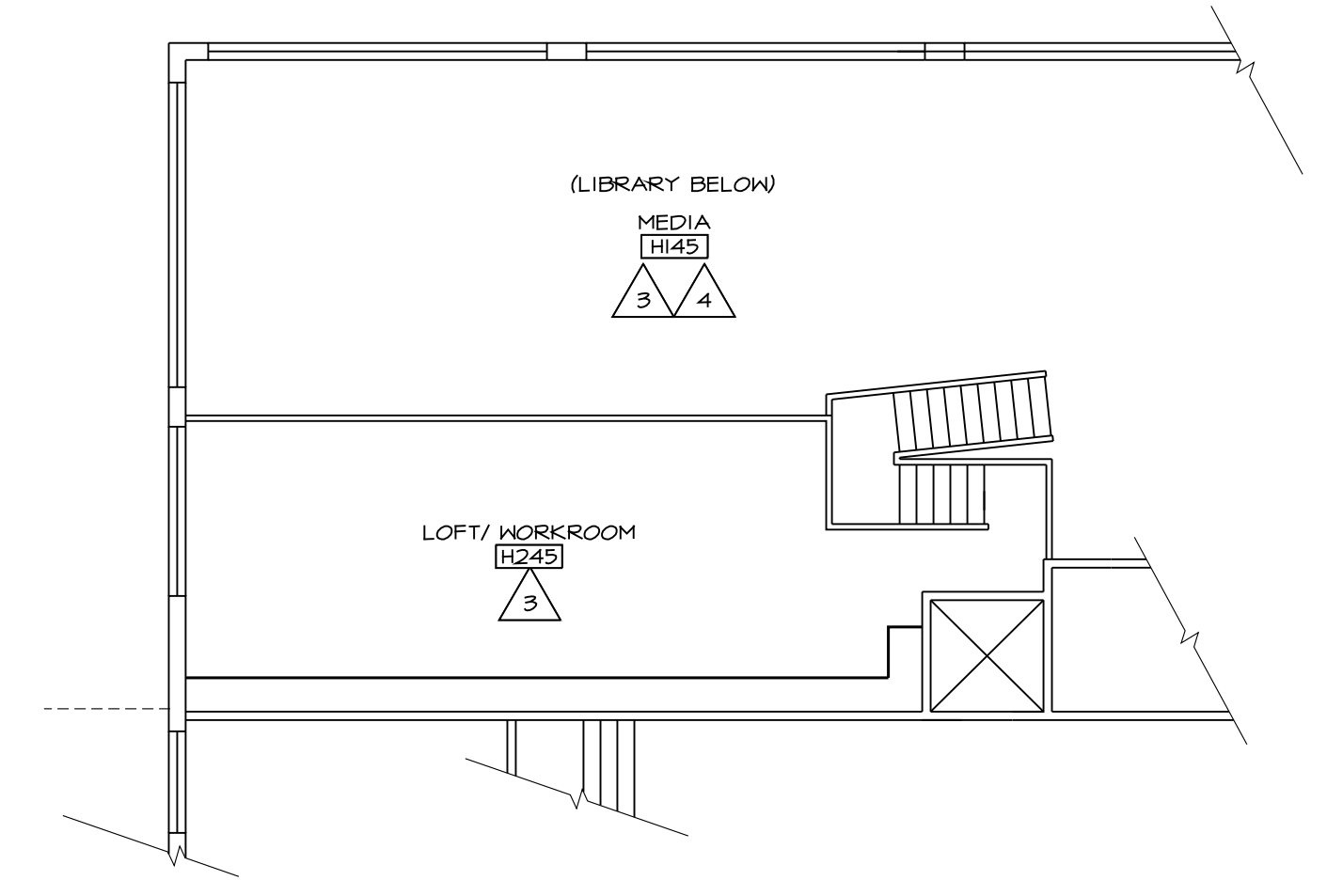
1 FIRST FLOOR DEMOLITION PLAN – HIGH SCHOOL
SCALE: 3/32" = 1'-0"

GENERAL NOTES:

1. CONTRACTOR RESPONSIBLE FOR VERIFYING ALL EXISTING CONDITIONS PRIOR TO BIDDING AND/ OR CONSTRUCTION.
2. CONTRACTOR RESPONSIBLE FOR PROVIDING ALL MATERIALS AND EQUIPMENT REQUIRED TO PROPERLY COMPLETE CONSTRUCTION, WHETHER INDICATED OR NOT.

DEMOLITION NOTES

1. DEMO AND REMOVE EXISTING DOOR IN ITS ENTIRETY, INCLUDING BUT NOT LIMITED TO DOOR, HARDWARE, HINGES AND CLOSERS. FRAME IS TO REMAIN. PREP EXISTING FRAME FOR NEW DOOR INSTALLATION. DISPOSE OF REMOVED MATERIALS IN A LEGAL MANNER OFF SITE.
2. DEMO AND REMOVE EXISTING DOOR AND FRAME IN ITS ENTIRETY, INCLUDING BUT NOT LIMITED TO DOOR, HARDWARE, HINGES, CLOSERS AND FRAME. PREP EXISTING OPENING FOR NEW FRAME AND DOOR INSTALLATION. DISPOSE OF REMOVED MATERIALS IN A LEGAL MANNER OFF SITE.
3. DEMO AND REMOVE EXISTING CEILING ASSEMBLY IN ITS ENTIRETY AS REQUIRED FOR HVAC DEMOLITION/ REPLACEMENT AND/ OR NEW CEILING AND GRID INSTALLATION. THIS INCLUDES BUT IS NOT LIMITED TO SUSPENDED CEILING GRIDS, 4" TILES, SUSPENDED GYP. BOARD ASSEMBLIES AND/ OR PLASTER ASSEMBLIES. COORDINATE WITH M.E.P. DOCUMENTS. DISPOSE OF REMOVED MATERIALS IN A LEGAL MANNER OFF SITE.
4. DEMO AND REMOVE WOODEN TRIM AND BAFFLES AROUND EXISTING LIGHT FIXTURE IN THEIR ENTIRETY, INCLUDING BUT NOT LIMITED TO HOOD TRIM, ANY HOOD NAILERS AND LIGHT FIXTURE BAFFLES. DISPOSE OF REMOVED MATERIALS IN A LEGAL MANNER OFF SITE.
5. DEMO AND REMOVE EXISTING KITCHEN HOOD & EXHAUST SYSTEM IN THEIR ENTIRETY. SEE MECHANICAL DEMO AND REPLACEMENT FOR ADDITIONAL DETAILS. DISPOSE OF ALL REMOVED MATERIALS IN A LEGAL MANNER OFF SITE.
6. DEMO AND REMOVE EXISTING CEILING MOUNTED HVAC UNIT IN ITS ENTIRETY. SEE MECHANICAL DEMO AND REPLACEMENT FOR ADDITIONAL DETAILS. DISPOSE OF ALL REMOVED MATERIALS IN A LEGAL MANNER OFF SITE.

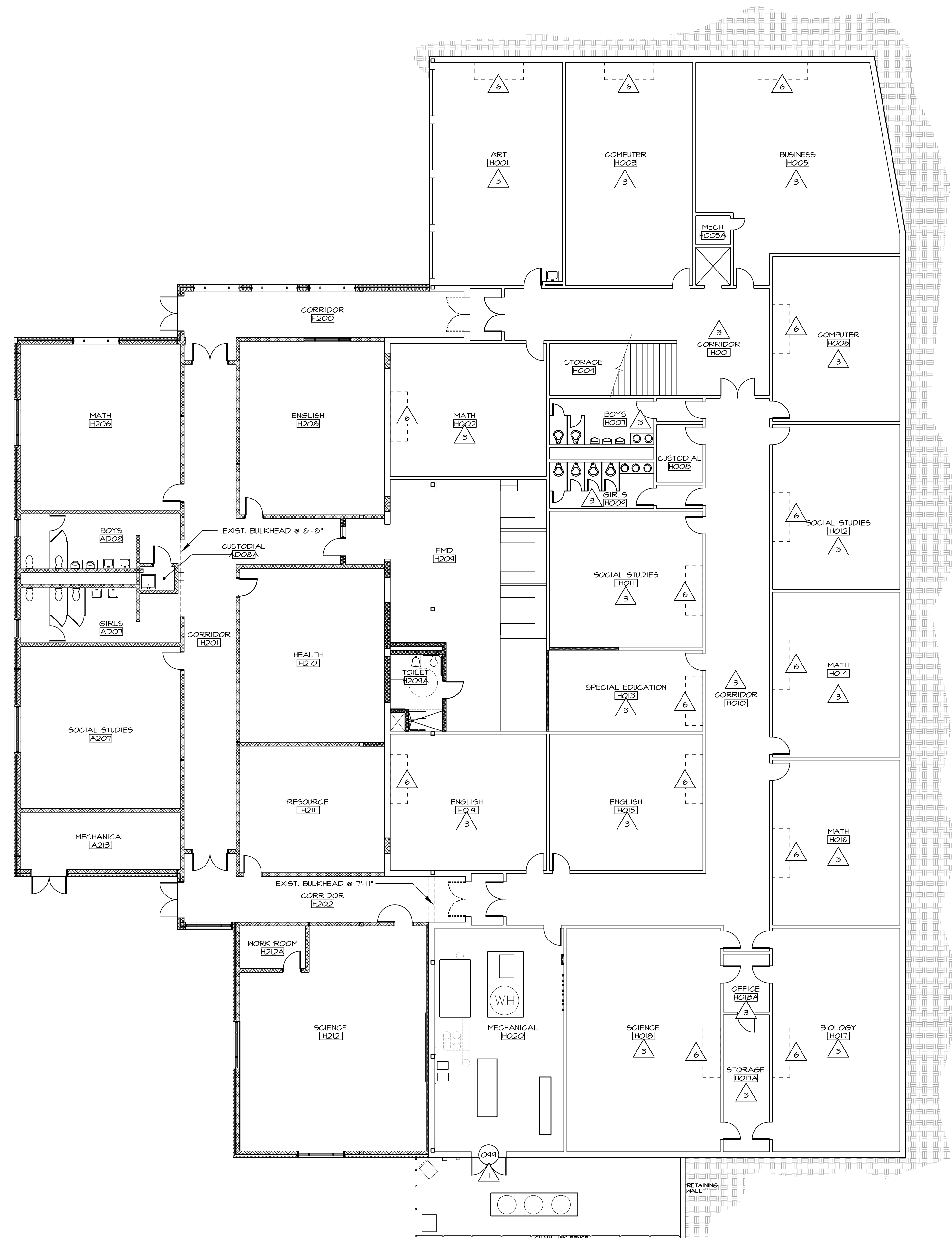


2 UPPER LEVEL LOFT/ WORKROOM PLAN – HIGH SCHOOL
SCALE: 3/32" = 1'-0"

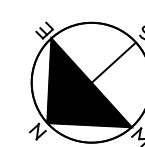
1. CONTRACTOR RESPONSIBLE FOR VERIFYING ALL EXISTING CONDITIONS PRIOR TO BIDDING AND/ OR CONSTRUCTION.

2. CONTRACTOR RESPONSIBLE FOR PROVIDING ALL MATERIALS AND EQUIPMENT REQUIRED TO PROPERLY COMPLETE CONSTRUCTION, WHETHER INDICATED OR NOT.

1. DEMO AND REMOVE EXISTING DOOR IN ITS ENTIRETY, INCLUDING BUT NOT LIMITED TO DOOR, HARDWARE, HINGES AND CLOSERS. FRAME IS TO REMAIN. PREP EXISTING FRAME FOR NEW DOOR INSTALLATION. DISPOSE OF REMOVED MATERIALS IN A LEGAL MANNER OFF SITE.
2. DEMO AND REMOVE EXISTING DOOR AND FRAME IN ITS ENTIRETY, INCLUDING BUT NOT LIMITED TO DOOR, HARDWARE, HINGES, CLOSERS AND FRAME. PREP EXISTING OPENING FOR NEW FRAME AND DOOR INSTALLATION. DISPOSE OF REMOVED MATERIALS IN A LEGAL MANNER OFF SITE.
3. DEMO AND REMOVE EXISTING CEILING ASSEMBLY IN ITS ENTIRETY AS REQUIRED FOR HVAC DISPOSITION REPLACEMENT AND/OR NEW CEILING AND GRID INSTALLATION. THIS INCLUDES BUT IS NOT LIMITED TO SUSPENDED CEILING GRIDS & TILES, SUSPENDED GYP. BD. ASSEMBLIES AND/OR PLASTER ASSEMBLIES. COORDINATE WITH M.E.P. DOCUMENTS. DISPOSE OF REMOVED MATERIALS IN A LEGAL MANNER OFF SITE.
4. DEMO AND REMOVE WOODEN TRIM AND BAFFLES AROUND EXISTING LIGHT FIXTURE IN THEIR ENTIRETY, INCLUDING BUT NOT LIMITED TO WOOD TRIM, ANY WOOD NAILERS AND LIGHT FIXTURE TRIM. DISPOSE OF REMOVED MATERIALS IN A LEGAL MANNER OFF SITE.
5. DEMO AND REMOVE EXISTING KITCHEN HOOD & EXHAUST SYSTEM IN THEIR ENTIRETY. SEE MECHANICAL DEMO AND REPLACEMENT FOR ADDITIONAL DETAILS. DISPOSE OF ALL REMOVED MATERIALS IN A LEGAL MANNER OFF SITE.
6. DEMO AND REMOVE EXISTING CEILING MOUNTED HVAC UNIT IN ITS ENTIRETY. SEE MECHANICAL DEMO AND REPLACEMENT FOR ADDITIONAL DETAILS. DISPOSE OF ALL REMOVED MATERIALS IN A LEGAL MANNER OFF SITE.



BASEMENT DEMOLITION PLAN – HIGH SCHOOL
SCALE: 3/32" = 1'-0"

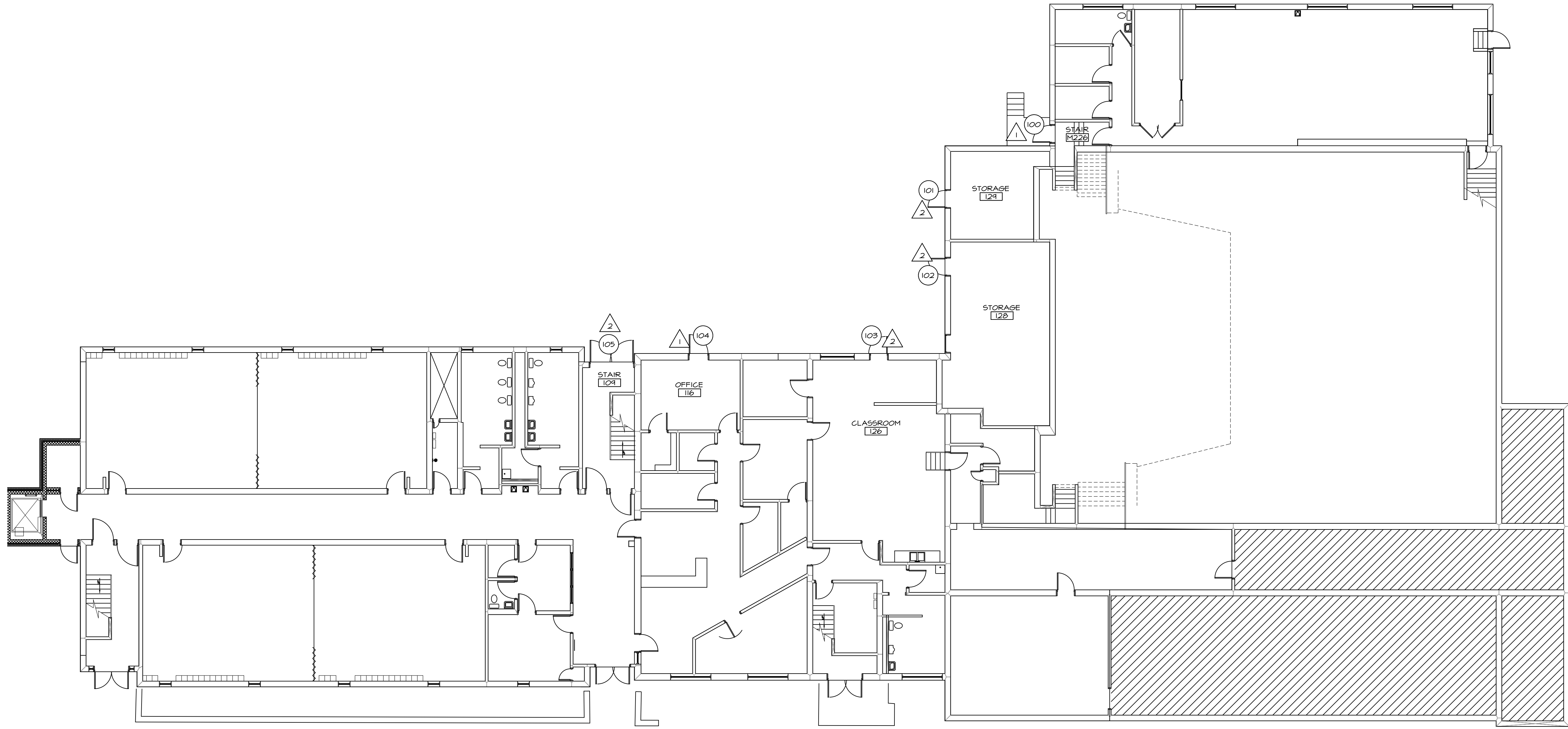


**DAWSON SPRINGS INDEPENDENT SCHOOLS
DSHS HVAC RENOVATION
DAWSON SPRINGS, KENTUCKY
BASEMENT DEMOLITION PLAN – HIGH SCHOOL**

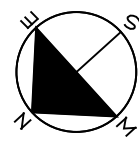
SHEET NUMBER

D1.2

CP -



1 BASEMENT DEMOLITION PLAN – ELEMENTARY SCHOOL
SCALE: 3/32" = 1'-0"



GENERAL NOTES:

1. CONTRACTOR RESPONSIBLE FOR VERIFYING ALL EXISTING CONDITIONS PRIOR TO BIDDING AND/ OR CONSTRUCTION.
2. CONTRACTOR RESPONSIBLE FOR PROVIDING ALL MATERIALS AND EQUIPMENT REQUIRED TO PROPERLY COMPLETE CONSTRUCTION, WHETHER INDICATED OR NOT.

DEMOLITION NOTES

1. DEMO AND REMOVE EXISTING DOOR IN ITS ENTIRETY, INCLUDING BUT NOT LIMITED TO DOOR, HARDWARE, HINGES AND CLOSERS. FRAME IS TO REMAIN. PREP EXISTING FRAME FOR NEW DOOR INSTALLATION. DISPOSE OF REMOVED MATERIALS IN A LEGAL MANNER OFF SITE.
2. DEMO AND REMOVE EXISTING DOOR AND FRAME IN ITS ENTIRETY, INCLUDING BUT NOT LIMITED TO DOOR, HARDWARE, HINGES, CLOSERS AND FRAME. PREP EXISTING OPENING FOR NEW FRAME AND DOOR INSTALLATION. DISPOSE OF REMOVED MATERIALS IN A LEGAL MANNER OFF SITE.
3. DEMO AND REMOVE EXISTING CEILING ASSEMBLY IN ITS ENTIRETY AS REQUIRED FOR HVAC DEMOLITION/ REPLACEMENT AND/ OR NEW CEILING AND GRID INSTALLATION. THIS INCLUDES BUT IS NOT LIMITED TO SUSPENDED CEILING GRIDS & TILES, SUSPENDED GYPSUM ASSEMBLIES AND/ OR PLASTER ASSEMBLIES. COORDINATE WITH M.E.P. DOCUMENTS. DISPOSE OF REMOVED MATERIALS IN A LEGAL MANNER OFF SITE.
4. DEMO AND REMOVE WOODEN TRIM AND BAFFLES AROUND EXISTING LIGHT FIXTURE IN THEIR ENTIRETY, INCLUDING BUT NOT LIMITED TO WOOD TRIM, ANY WOOD NAILERS AND LIGHT FIXTURE BAFFLES. DISPOSE OF REMOVED MATERIALS IN A LEGAL MANNER OFF SITE.
5. DEMO AND REMOVE EXISTING KITCHEN HOOD & EXHAUST SYSTEM IN THEIR ENTIRETY. SEE MECHANICAL DEMO AND REPLACEMENT FOR ADDITIONAL DETAILS. DISPOSE OF ALL REMOVED MATERIALS IN A LEGAL MANNER OFF SITE.
6. DEMO AND REMOVE EXISTING CEILING MOUNTED HVAC UNIT IN ITS ENTIRETY. SEE MECHANICAL DEMO AND REPLACEMENT FOR ADDITIONAL DETAILS. DISPOSE OF ALL REMOVED MATERIALS IN A LEGAL MANNER OFF SITE.

TEMPORARY NOTES:

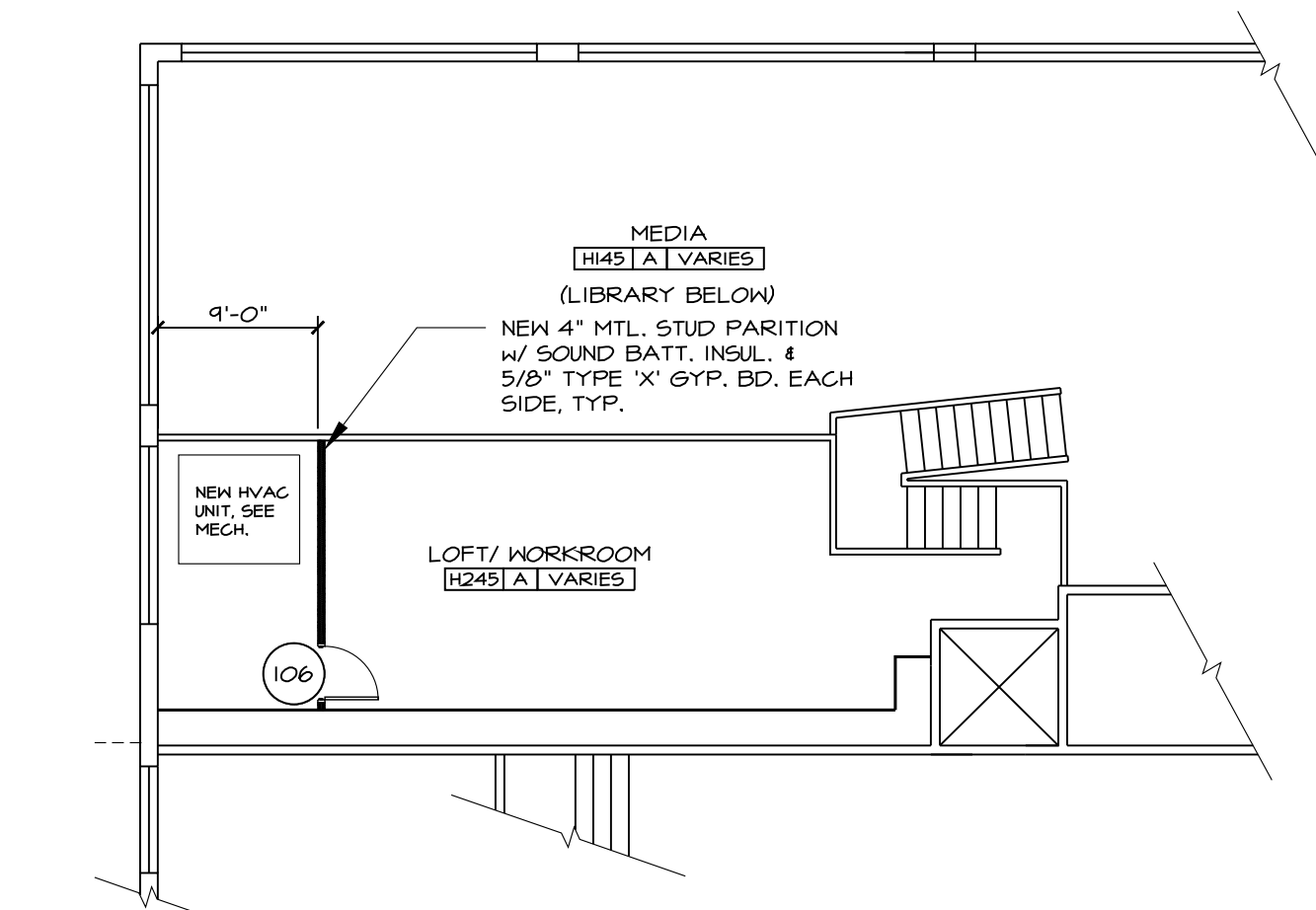
- 100 REPLACE DOOR, FRAME TO REMAIN. 3'-0" X 7'-0" VIEWLITE, HOLLOW METAL. PANIC HARDWARE, CLOSER.
- 101 REPLACE DOOR & FRAME. 3'-0" X 7'-0" VIEWLITE, HOLLOW METAL. PANIC HARDWARE, CLOSER.
- 102 REPLACE DOOR & FRAME. 3'-0" X 7'-0" FLUSH, HOLLOW METAL. STORAGE ROOM.
- 103 REPLACE DOOR & FRAME. 3'-0" X 7'-0" FLUSH, HOLLOW METAL. PANIC HARDWARE, CLOSER.
- 104 REPLACE DOOR, FRAME TO REMAIN. 3'-0" X 7'-0" HALF GLASS, HOLLOW METAL. PANIC HARDWARE, CLOSER.
- 105 REPLACE DOORS & FRAME, PAIR 3'-0" X 7'-0" HALF GLASS, HOLLOW METAL. PANIC HARDWARE, CLOSER.

1. CONTRACTOR RESPONSIBLE FOR VERIFYING ALL EXISTING CONDITIONS PRIOR TO BIDDING AND/ OR CONSTRUCTION.

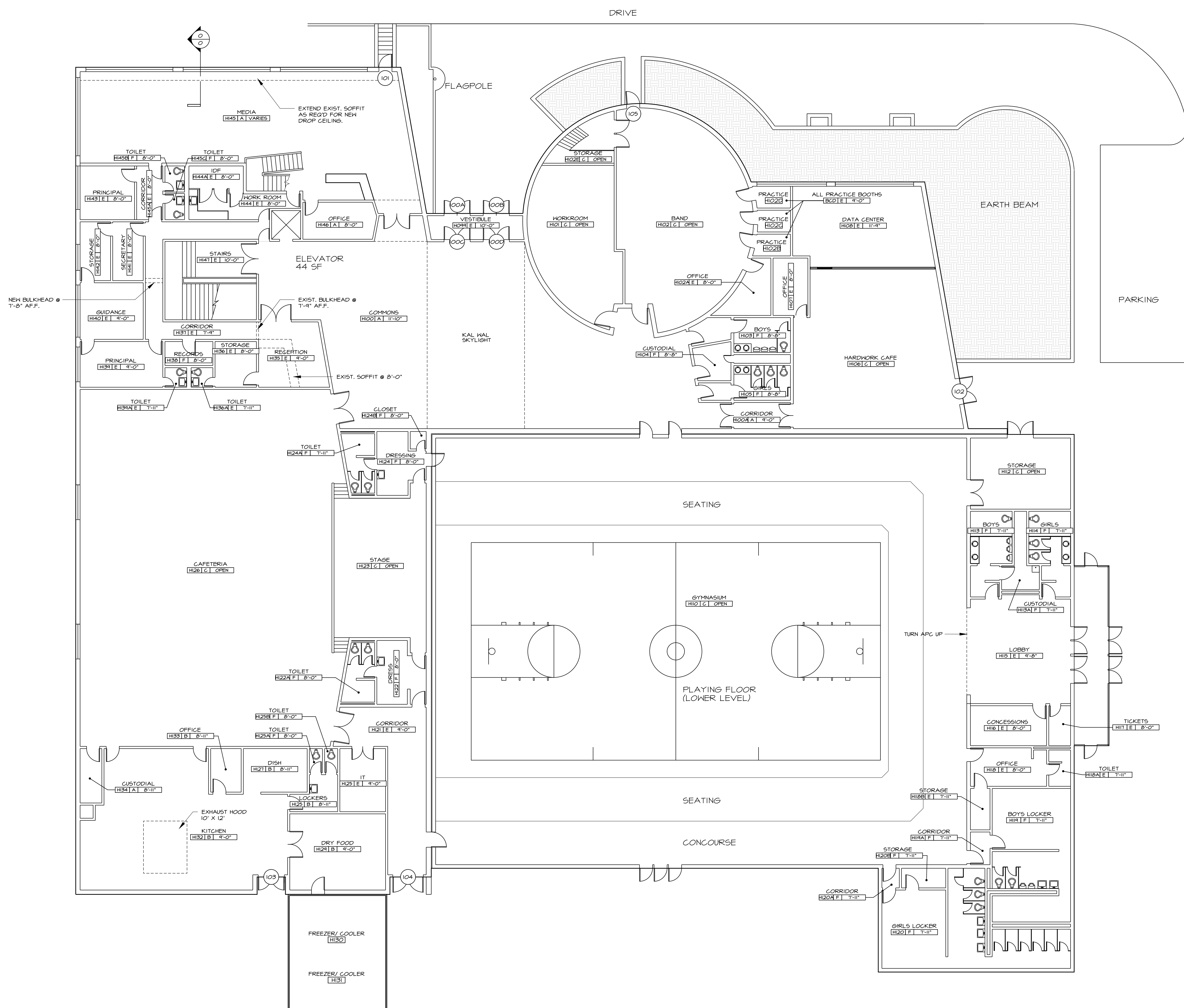
2. CONTRACTOR RESPONSIBLE FOR PROVIDING ALL MATERIALS AND EQUIPMENT REQUIRED TO PROPERLY COMPLETE CONSTRUCTION, WHETHER INDICATED OR NOT.

| ROOM FINISH SCHEDULE | | | | | ROOM NUMBER FINISH KEY CEILING HT. | |
|----------------------|-------|-------|-------|-----------------------|--|--|
| FINISH KEY | FLOOR | BASE | WALLS | CEILING | | |
| A | EXST. | EXST. | EXST. | 2x2 APC, 8' | | |
| B | EXST. | EXST. | EXST. | 2x2 APC, 12' | | |
| C | EXST. | EXST. | EXST. | OPEN TO DECK | | |
| E | EXST. | EXST. | EXST. | EXST. GYP. BD. | | |
| F | EXST. | EXST. | EXST. | GYP. BD/PRIME & PAINT | | |

- 0004 REPLACE BOTH DOORS, FRAME TO REMAIN. PAIR 3'-0" X 7'-0" FULL GLASS HOLLOW METAL. PANIC BARS, CLOSERS.
- 0008 REPLACE BOTH DOORS, FRAME TO REMAIN. PAIR 3'-0" X 7'-0" FULL GLASS HOLLOW METAL. PANIC BARS, CLOSERS.
- 0009 REPLACE BOTH DOORS, FRAME TO REMAIN. PAIR 3'-0" X 7'-0" FULL GLASS HOLLOW METAL. PANIC BARS, *ELECTRIC STRIKE, REMOTE PUSH BUTTON & INTERCOM. CLOSERS.
- 0000 REPLACE BOTH DOORS, FRAME TO REMAIN. PAIR 3'-0" X 7'-0" FULL GLASS HOLLOW METAL. PANIC BARS, CLOSERS.
- 001 REPLACE DOOR & HARDWARE, FRAME TO REMAIN. 3'-0" X 7'-0" FLUSH, HOLLOW METAL. PANIC BARS. CLOSER.
- 002 REPLACE DOOR & HARDWARE, FRAME TO REMAIN. PAIR 3'-0" X 7'-0" FLUSH, HOLLOW METAL. PANIC BARS. CLOSER.
- 003 REPLACE DOORS & HARDWARE, FRAME TO REMAIN (?). PAIR 3'-0" X 7'-0" FLUSH, HOLLOW METAL. PANIC BARS, *ELECTRIC STRIKE & CARD READER. CLOSERS.
- 004 REPLACE DOORS, HARDWARE & FRAME. PAIR 4'-4" X 7'-0" VIEKLITE, HOLLOW METAL. PANIC BARS, ELECTRIC STRIKE & CARD READER. CLOSER.
- 005 REPLACE DOOR & HARDWARE, FRAME TO REMAIN. 4'-4" X 7'-0" FLUSH, HOLLOW METAL. PANIC BARS, CONTINUOUS HINGE & HOLD OPEN. CLOSER.

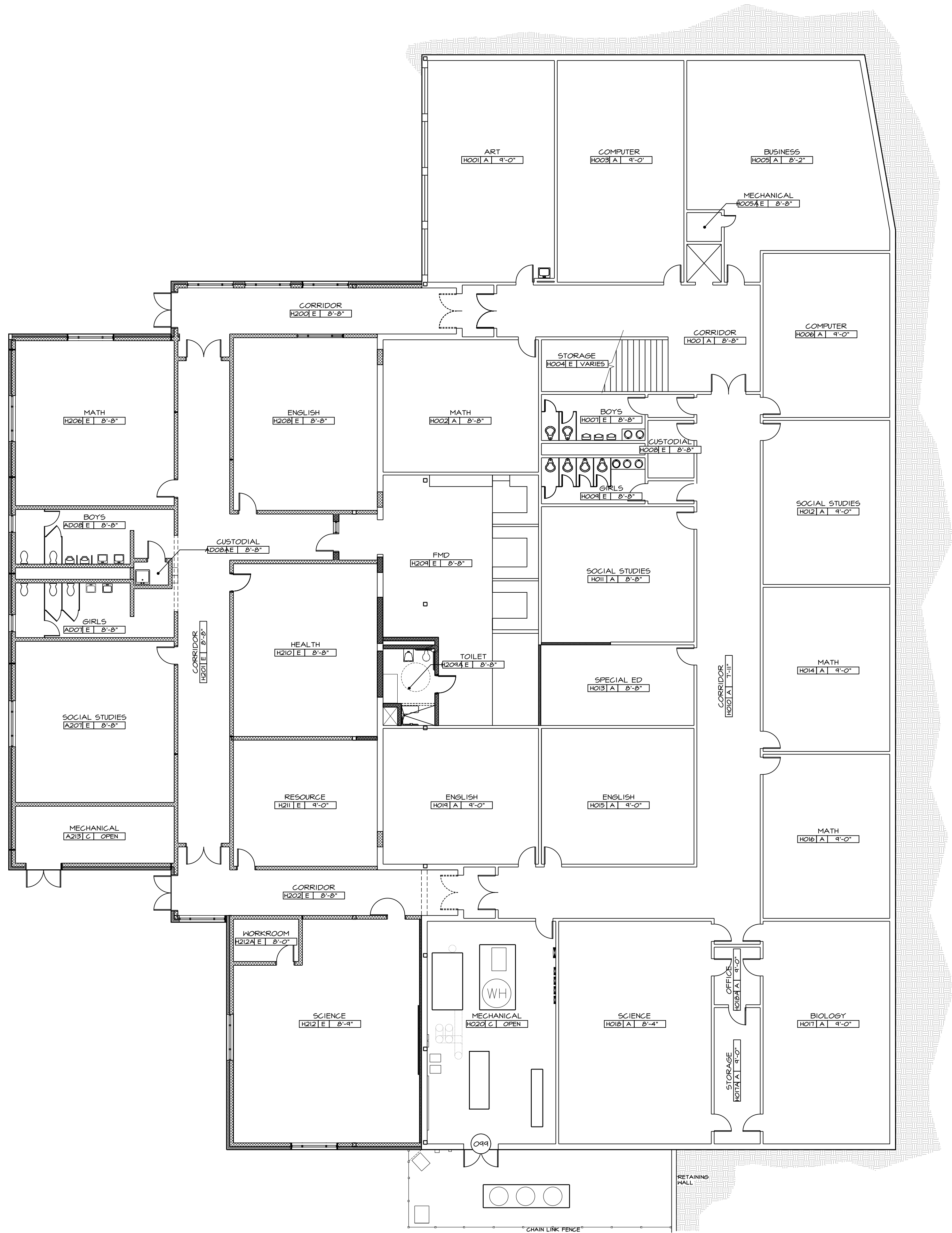


2 UPPER LEVEL LOFT/ WORKROOM PLAN – HIGH SCHOOL
SCALE: 3/32" = 1'-0"



1 FIRST FLOOR PLAN - HIGH SCHOOL
SCALE: 3/32" = 1'-0"

**DAWSON SPRINGS INDEPENDENT SCHOOLS
DHS HVAC RENOVATION
DAWSON SPRINGS, KENTUCKY
FIRST FLOOR PLAN – HIGH SCHOOL**



1 BASEMENT FLOOR PLAN - HIGH SCHOOL
SCALE: 3/32" = 1'-0"

GENERAL NOTES:

1. CONTRACTOR RESPONSIBLE FOR VERIFYING ALL EXISTING CONDITIONS PRIOR TO BIDDING AND/ OR CONSTRUCTION.
2. CONTRACTOR RESPONSIBLE FOR PROVIDING ALL MATERIALS AND EQUIPMENT REQUIRED TO PROPERLY COMPLETE CONSTRUCTION, WHETHER INDICATED OR NOT.

| ROOM FINISH SCHEDULE | | | | | |
|----------------------|--------|--------|--------|-------------------------|-------------|
| FINISH KEY | FLOOR | BASE | WALLS | CEILING | ROOF NUMBER |
| A | EXIST. | EXIST. | EXIST. | 2x2 APC #1 | FINISH KEY |
| B | EXIST. | EXIST. | EXIST. | 2x2 APC #2 | CEILING IT |
| C | EXIST. | EXIST. | EXIST. | OPEN TO DECK | |
| E | EXIST. | EXIST. | EXIST. | EXIST. GYP. BD. | |
| F | EXIST. | EXIST. | EXIST. | GYP. BD./ PRIME & PAINT | |

TEMPORARY NOTES:

- 099 REPLACE HARDWARE ONLY. BOTH DOORS & FRAME TO REMAIN (7). PAIR 3'-0" X 7'-0" LOUVERED, HOLLOW METAL. ADD PANIC BARS & CLOSERS.

RBS DESIGN GROUP

Architecture

ALL RIGHTS RESERVED

THIS DRAWING IS THE PROPERTY OF RBS DESIGN GROUP. IT IS TO BE USED ONLY FOR THE PROJECT AND SITE SPECIFICALLY IDENTIFIED HEREON. NO PART OF THIS DRAWING IS TO BE REPRODUCED OR TRANSMITTED IN ANY FORM OR BY ANY MEANS, ELECTRONIC OR MECHANICAL, INCLUDING PHOTOCOPYING, RECORDING, OR BY ANY INFORMATION STORAGE AND RETRIEVAL SYSTEM, WITHOUT THE WRITTEN PERMISSION OF RBS DESIGN GROUP.

PROJECT: DSHS HVAC RENOVATION
SHEET: A1.2 OF 2
DATE: 7/19/21
DRAWN BY: Y20052
CHECKED BY: CTT
DATE: 7/19/21

DAWSON SPRINGS INDEPENDENT SCHOOLS

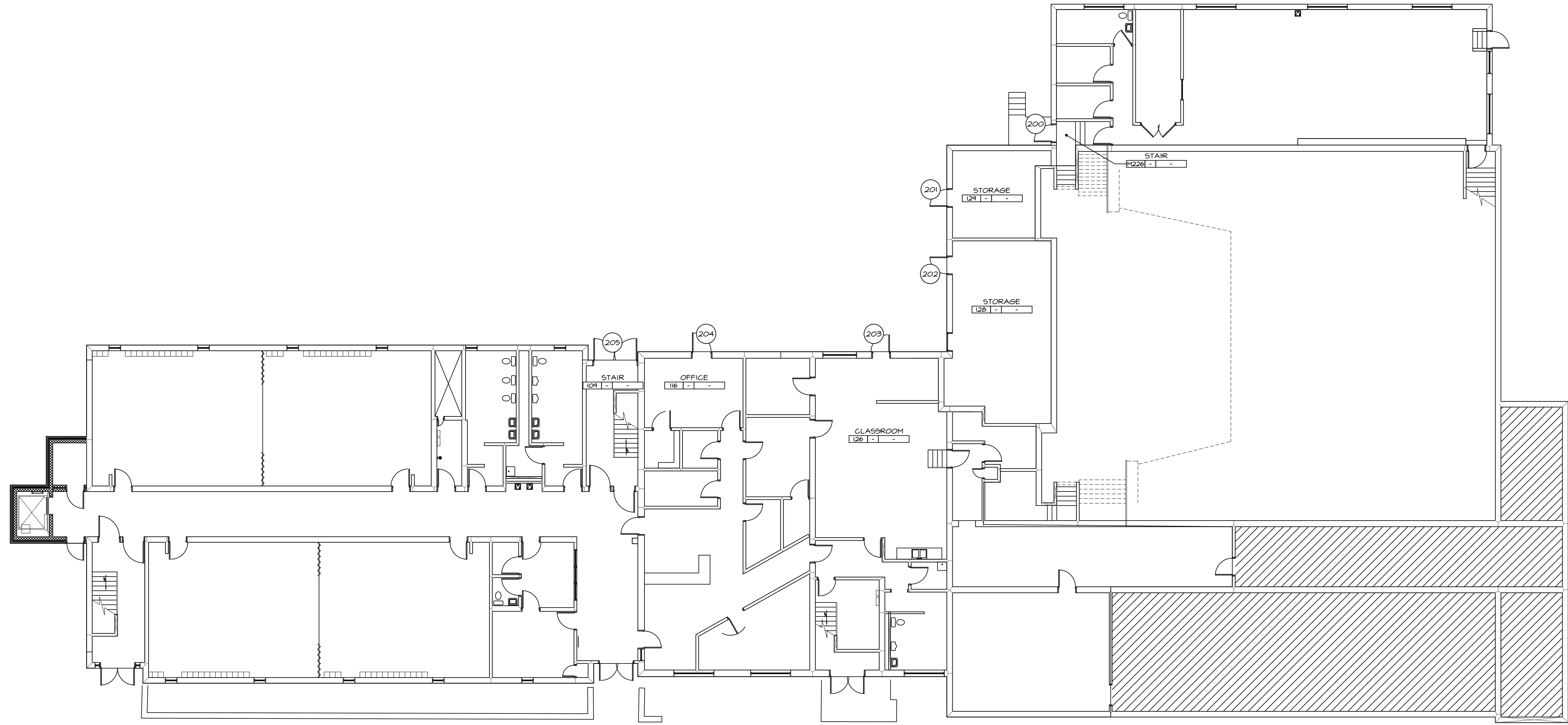
DSHS HVAC RENOVATION

DAWSON SPRINGS, KENTUCKY

BASEMENT FLOOR PLAN - HIGH SCHOOL

SHEET NUMBER

A1.2



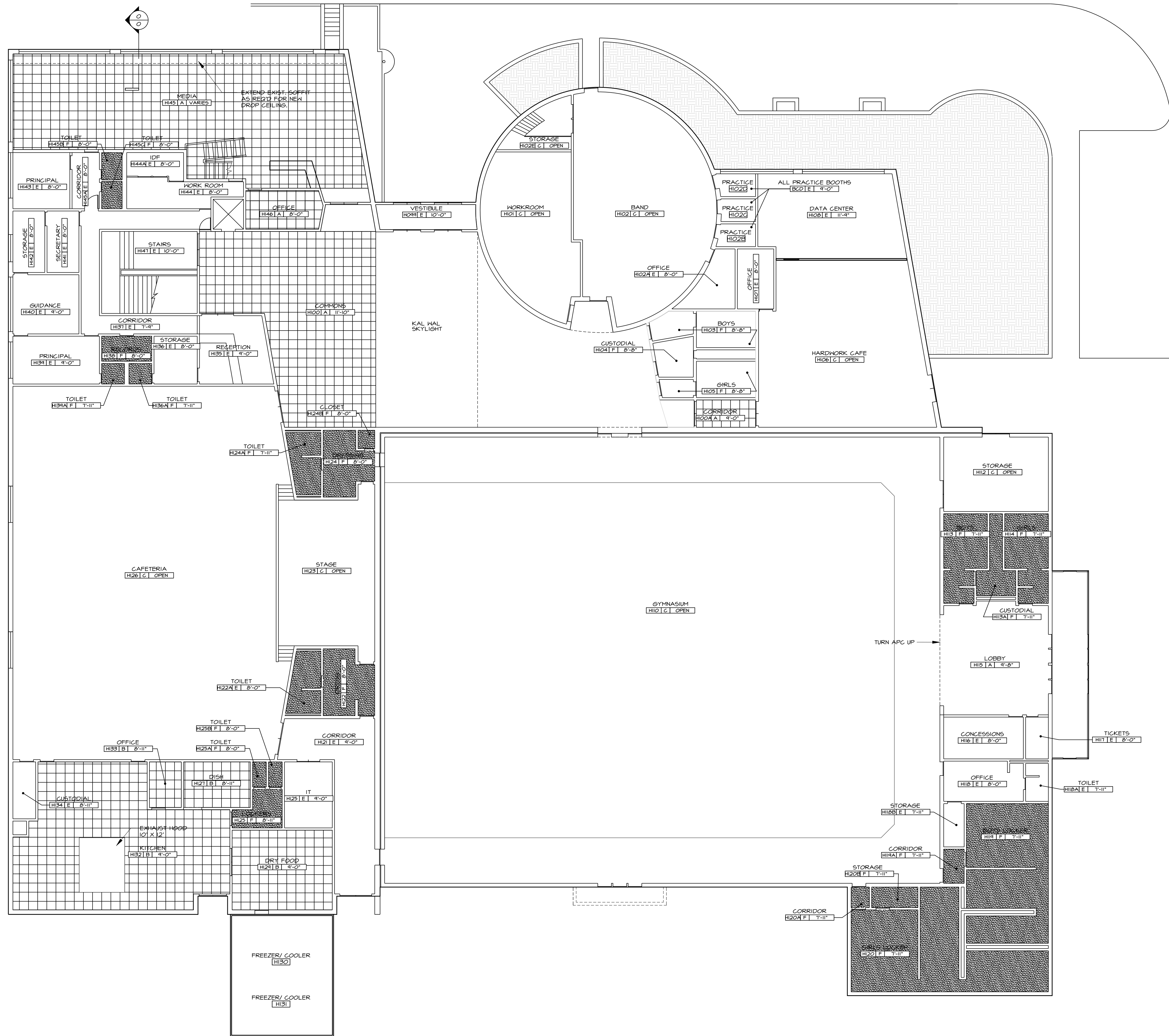
1 FIRST FLOOR PLAN – ELEMENTARY SCHOOL
SCALE: 3/32" = 1'-0"

GENERAL NOTES:

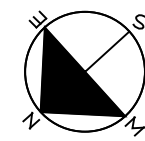
1. CONTRACTOR RESPONSIBLE FOR VERIFYING ALL EXISTING CONDITIONS PRIOR TO BIDDING AND/ OR CONSTRUCTION.
2. CONTRACTOR RESPONSIBLE FOR PROVIDING ALL MATERIALS AND EQUIPMENT REQUIRED TO PROPERLY COMPLETE CONSTRUCTION, WHETHER INDICATED OR NOT.

TEMP. NOTES:

- 200 REPLACE DOOR, FRAME TO REMAIN. 3'-0" X 7'-0" VENEER, HOLLOW METAL. PANIC HARDWARE, CLOSER.
- 201 REPLACE DOOR & FRAME. 3'-0" X 7'-0" VENEER, HOLLOW METAL. PANIC HARDWARE, CLOSER.
- 202 REPLACE DOOR & FRAME. 3'-0" X 7'-0" FLUSH, HOLLOW METAL. STORAGE ROOM.
- 203 REPLACE DOOR & FRAME. 3'-0" X 7'-0" FLUSH, HOLLOW METAL. PANIC HARDWARE, CLOSER.
- 204 REPLACE DOOR, FRAME TO REMAIN. 3'-0" X 7'-0" HALF GLASS, HOLLOW METAL. PANIC HARDWARE, CLOSER.
- 205 REPLACE DOORS & FRAME. PAIR 3'-0" X 7'-0" HALF GLASS, HOLLOW METAL. PANIC HARDWARE, CLOSER.



1 FIRST FLOOR REFLECTED CEILING PLAN - HIGH SCHOOL
SCALE: 3/32" = 1'-0"

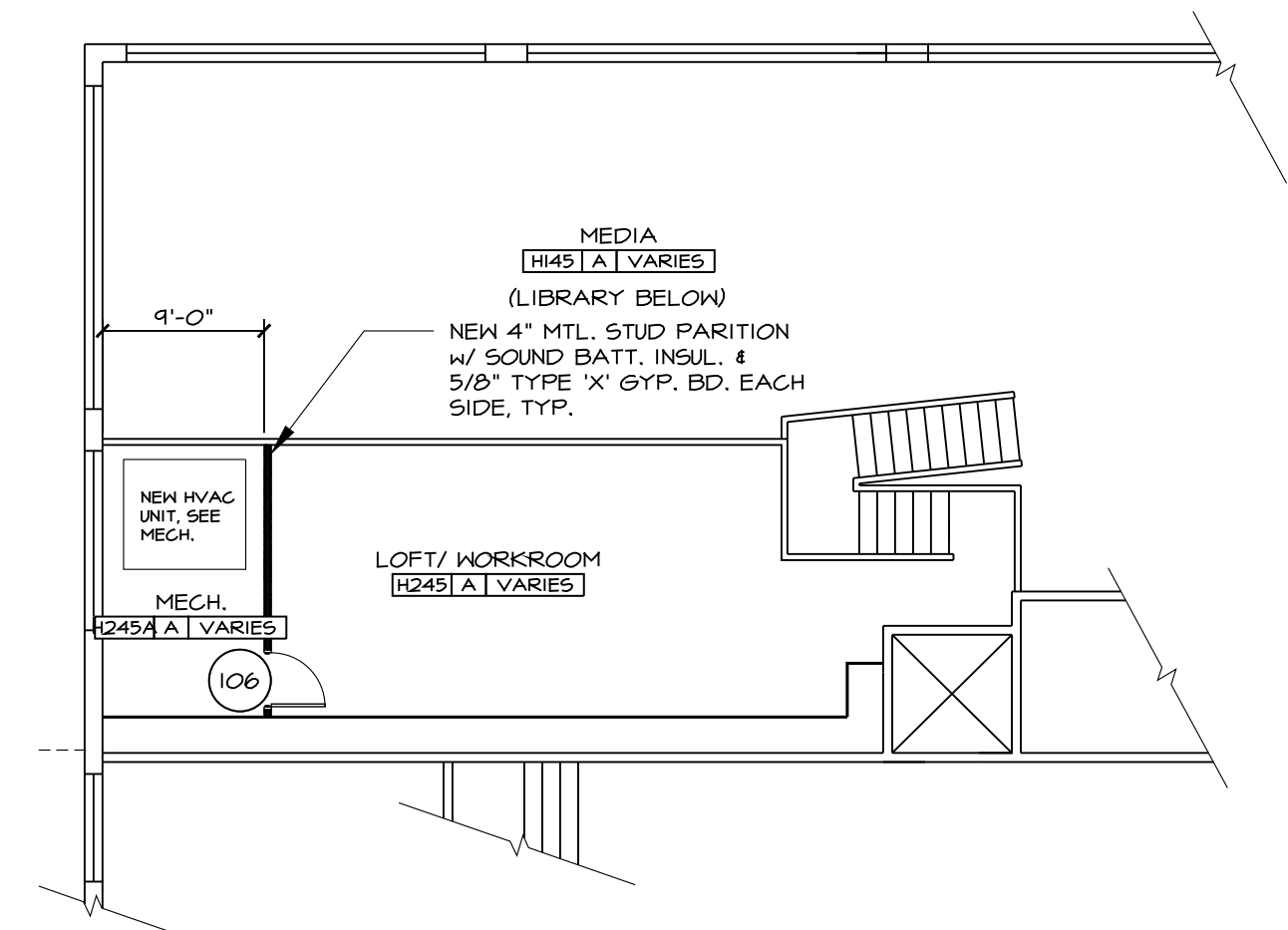


GENERAL NOTES:

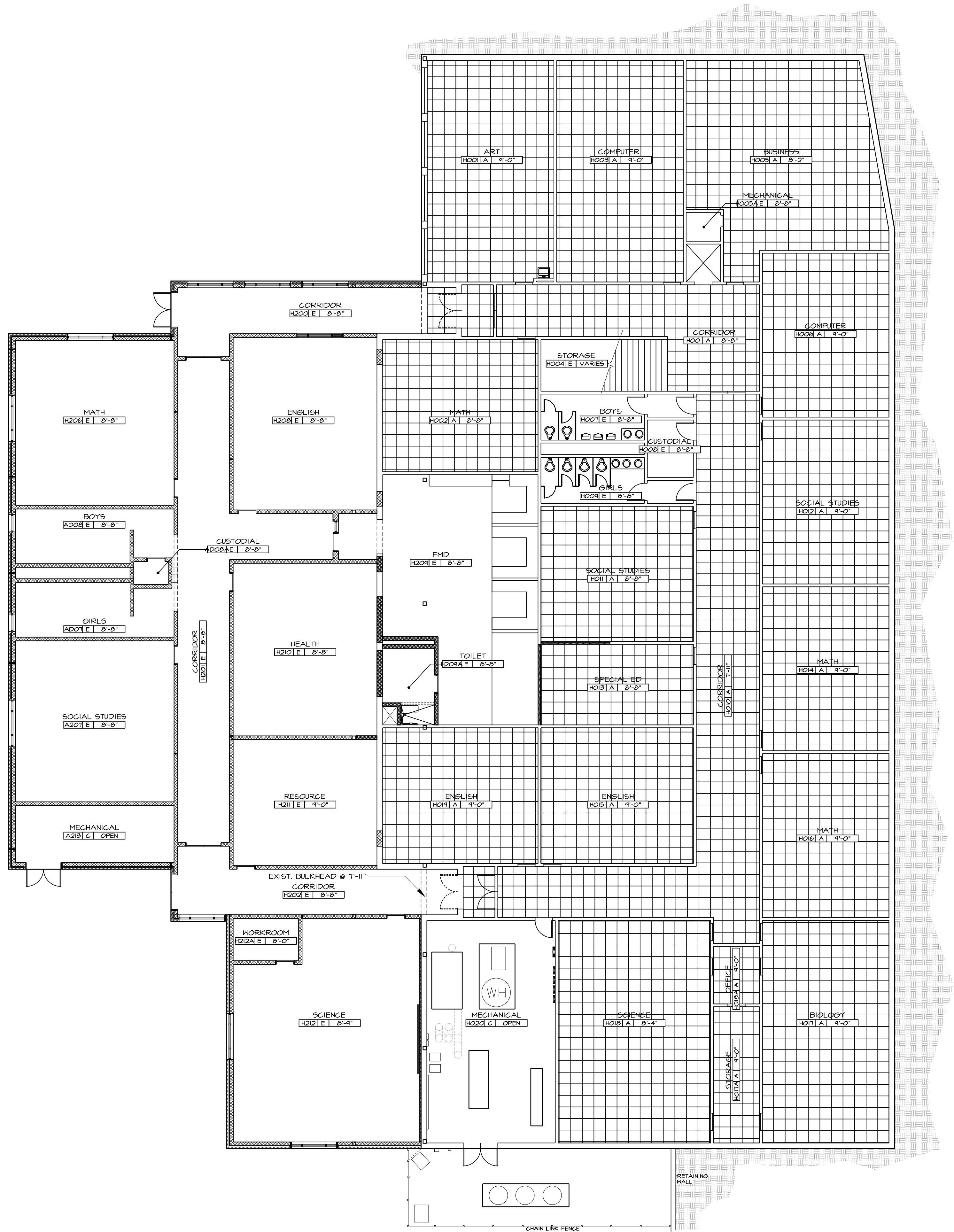
1. CONTRACTOR RESPONSIBLE FOR VERIFYING ALL EXISTING CONDITIONS PRIOR TO BIDDING AND/ OR CONSTRUCTION.
2. CONTRACTOR RESPONSIBLE FOR PROVIDING ALL MATERIALS AND EQUIPMENT REQUIRED TO PROPERLY COMPLETE CONSTRUCTION, WHETHER INDICATED OR NOT.

CEILING LEGEND:

| | |
|----------------------------|--|
| 2X2 APC | |
| SUSPENDED GYP. BO. CEILING | |



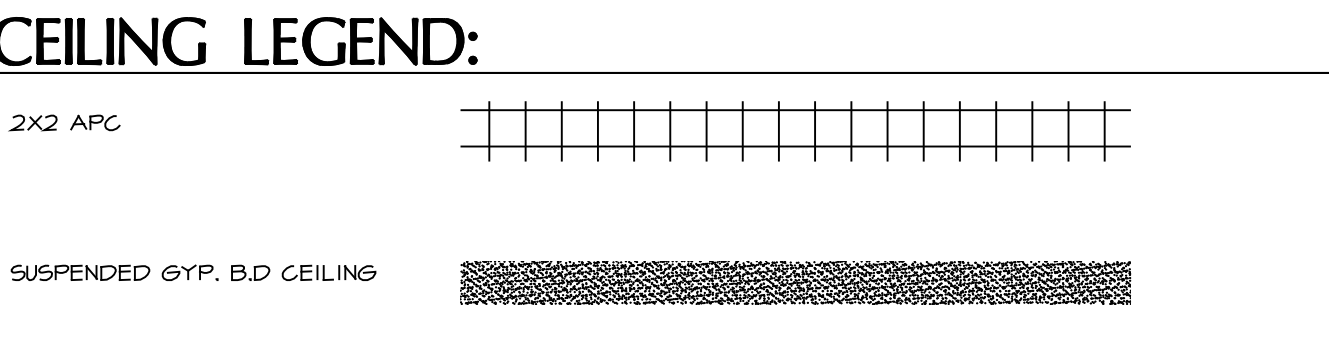
2 UPPER LEVEL LOFT/ WORKROOM PLAN - HIGH SCHOOL
SCALE: 3/32" = 1'-0"



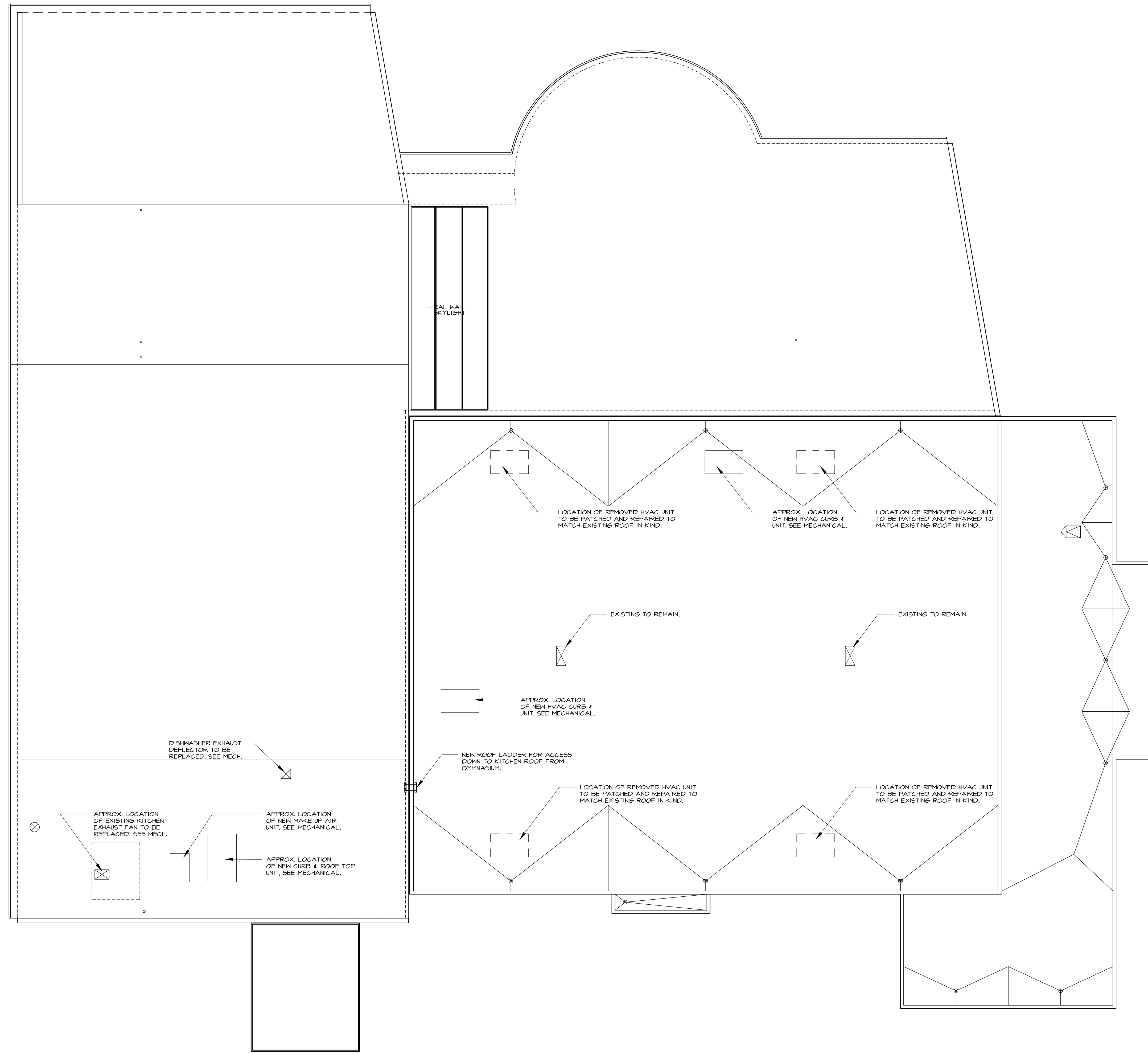
GENERAL NOTES:

1. CONTRACTOR RESPONSIBLE FOR VERIFYING ALL EXISTING CONDITIONS PRIOR TO BIDDING AND/ OR CONSTRUCTION.

2. CONTRACTOR RESPONSIBLE FOR PROVIDING ALL MATERIALS AND EQUIPMENT REQUIRED TO PROPERLY COMPLETE CONSTRUCTION, WHETHER INDICATED OR NOT.

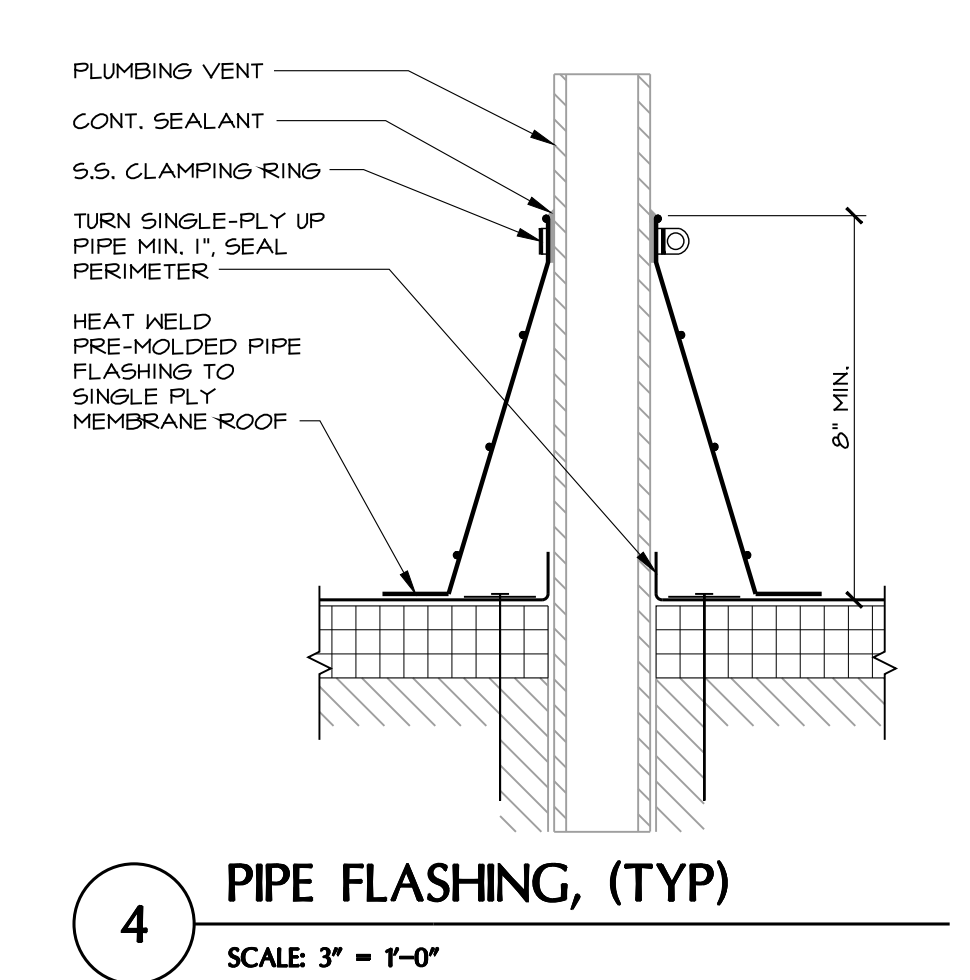
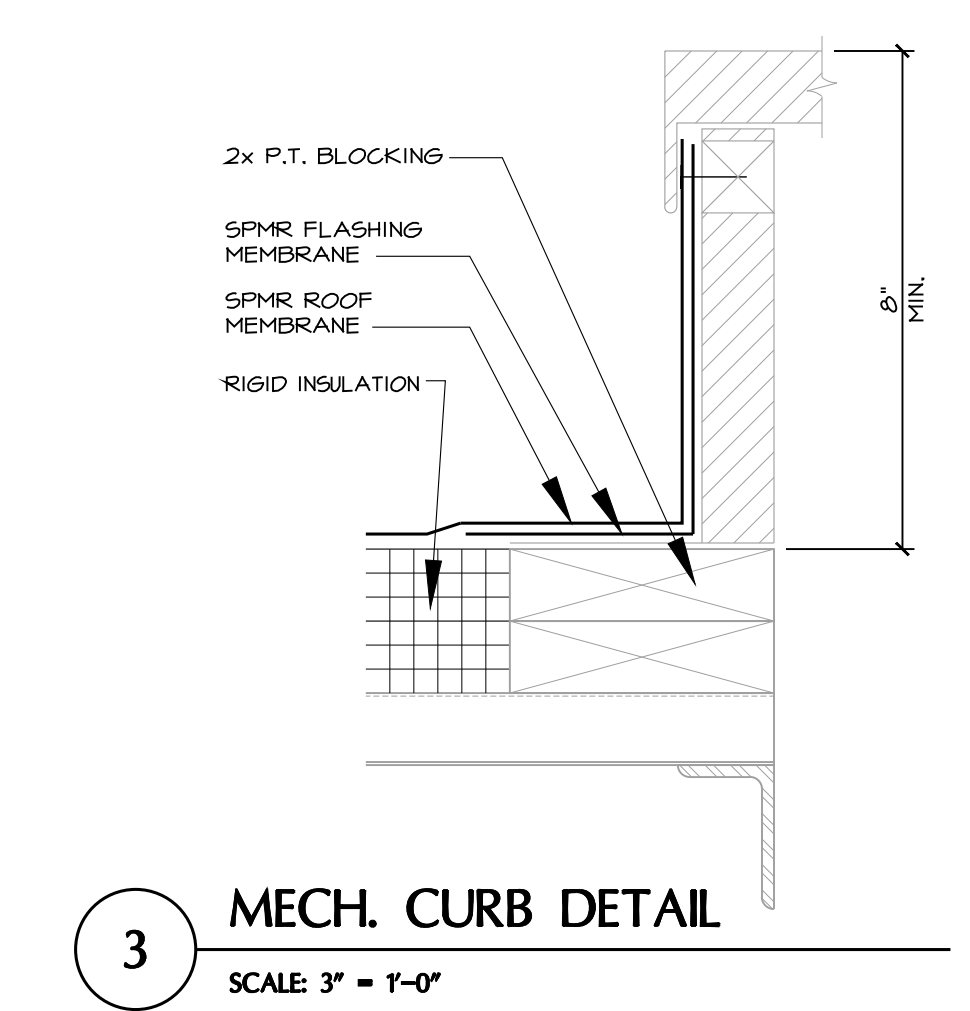
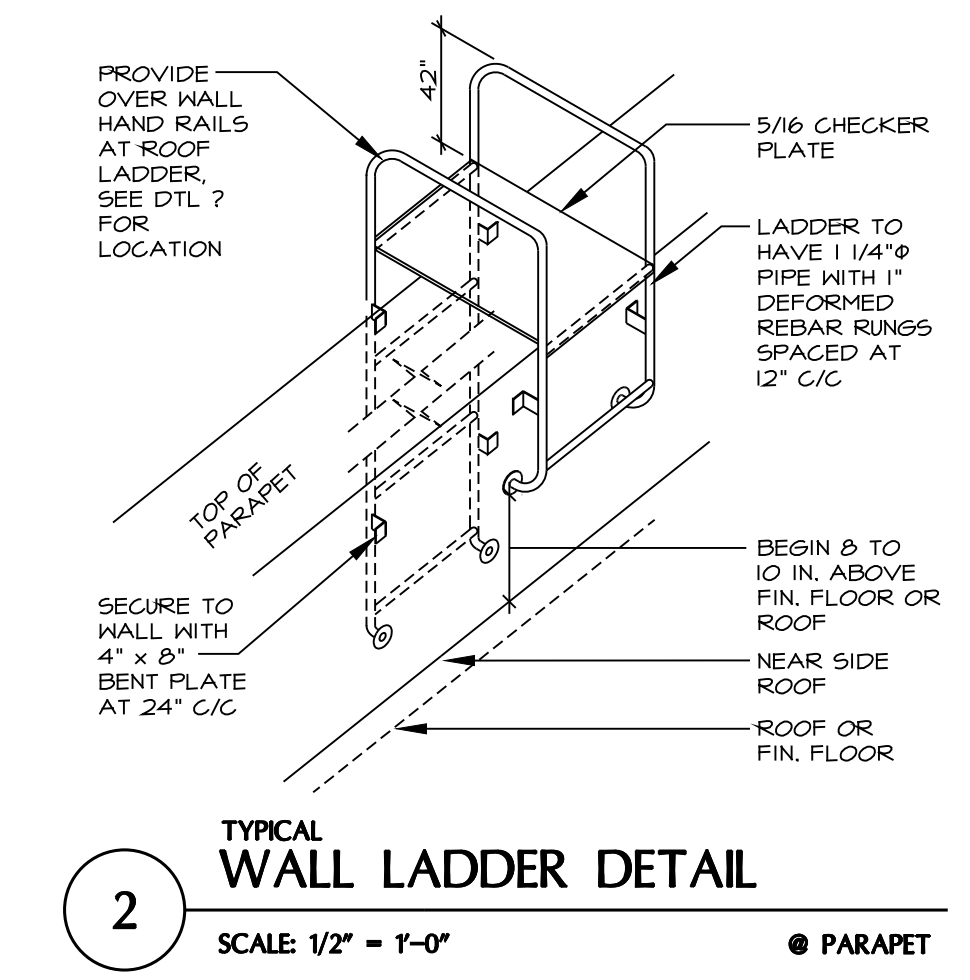


1 BASEMENT REFLECTED CEILING PLAN – HIGH SCHOOL
SCALE: 3/32" = 1'-0"



1 OVERALL ROOF PLAN – HIGH SCHOOL
SCALE: 3/32" = 1'-0"

GENERAL NOTES:
1. CONTRACTOR RESPONSIBLE FOR VERIFYING ALL EXISTING CONDITIONS PRIOR TO BIDDING AND/ OR CONSTRUCTION.
2. CONTRACTOR RESPONSIBLE FOR PROVIDING ALL MATERIALS AND EQUIPMENT REQUIRED TO PROPERLY COMPLETE CONSTRUCTION, WHETHER INDICATED OR NOT.



| DOOR AND FRAME SCHEDULE | | | | | | | | | | |
|-------------------------|-------|-------------|-------|--------|----------|------|--------|----------|--------|------|
| NO. | LABEL | DOOR | | | FRAME | | | HARDWARE | | |
| | | SIZE | | | TYPE | MATL | DETAIL | | SET NO | ANSI |
| | | WD | HGT | THK | | | HEAD | JAMB | | |
| | | | | | | | | | | |
| 041 | | PR 3'-0" | 7'-0" | 1 3/4" | LOUVERED | H.M. | EXIST. | - | - | ? |
| 100A | | PR 3'-0" | 7'-0" | 1 3/4" | F6 | H.M. | EXIST. | - | - | ? |
| 100B | | PR 3'-0" | 7'-0" | 1 3/4" | F6 | H.M. | EXIST. | - | - | ? |
| 100C | | PR 3'-0" | 7'-0" | 1 3/4" | F6 | H.M. | EXIST. | - | - | ? |
| 100D | | PR 3'-0" | 7'-0" | 1 3/4" | F6 | H.M. | EXIST. | - | - | ? |
| 101 | | 3'-0" | 7'-0" | 1 3/4" | F | H.M. | EXIST. | - | - | ? |
| 102 | | PR 3'-0" | 7'-0" | 1 3/4" | F | H.M. | EXIST. | - | - | ? |
| 103 | | PR 3'-0" | 7'-0" | 1 3/4" | F | H.M. | EXIST. | - | - | ? |
| 104 | | PR 3'-8" | 7'-0" | 1 3/4" | VL | H.M. | 3 | - | - | ? |
| 105 | | PR 3'-8" | 7'-0" | 1 3/4" | F | H.M. | EXIST. | - | - | ? |
| 106 | | 3'-0" | 7'-0" | 1 3/4" | F | H.M. | ? | ? | ? | ? |
| | | | | | | | | | | |
| 200 | | 3'-0" | 7'-0" | 1 3/4" | VL | H.M. | EXIST. | - | - | ? |
| 201 | | 3'-0" | 7'-0" | 1 3/4" | VL | H.M. | 1 | - | - | ? |
| 202 | | 3'-0" | 7'-0" | 1 3/4" | F | H.M. | 1 | - | - | ? |
| 203 | | 3'-0" | 7'-0" | 1 3/4" | F | H.M. | 1 | - | - | ? |
| 204 | | 3'-0" | 7'-0" | 1 3/4" | H6 | H.M. | EXIST. | - | - | ? |
| 205 | | PR 3'-0" | 7'-0" | 1 3/4" | H6 | H.M. | 2 | - | - | ? |
| | | | | | | | | | | |
| HARDWARE SCHEDULE | | | | | | | | | | |
| SET #1 | | | | | | | | | | |
| | | JEFF CLARKE | | | | | | | | |

NOTE:

TEMP. NOTES:

- 041REPLACE HARDWARE ONLY. BOTH DOORS & FRAME TO REMAIN (?). PAIR 3'-0" X 7'-0" LOUVERED, HOLLOW METAL. ADD PANIC BARS & CLOSERS.
- 100AREPLACE BOTH DOORS, FRAME TO REMAIN. PAIR 3'-0" X 7'-0" FULL GLASS HOLLOW METAL. PANIC BARS, CLOSERS.
- 100BREPLACE BOTH DOORS, FRAME TO REMAIN. PAIR 3'-0" X 7'-0" FULL GLASS HOLLOW METAL. PANIC BARS, CLOSERS.
- 100CREPLACE BOTH DOORS, FRAME TO REMAIN. PAIR 3'-0" X 7'-0" FULL GLASS HOLLOW METAL. PANIC BARS. *ELECTRIC STRIKE, REMOTE PUSH BUTTON & INTERCOM. CLOSERS.
- 100DREPLACE BOTH DOORS, FRAME TO REMAIN. PAIR 3'-0" X 7'-0" FULL GLASS HOLLOW METAL. PANIC BARS, CLOSERS.
- 101REPLACE DOOR & HARDWARE, FRAME TO REMAIN. 3'-0" X 7'-0" FLUSH, HOLLOW METAL. PANIC BARS. CLOSER.
- 102REPLACE DOOR & HARDWARE, FRAME TO REMAIN. PAIR 3'-0" X 7'-0" FLUSH, HOLLOW METAL. PANIC BARS. CLOSER.
- 103REPLACE DOORS & HARDWARE, FRAME TO REMAIN (?). PAIR 3'-0" X 7'-0" FLUSH, HOLLOW METAL. PANIC BARS. ELECTRIC STRIKE & CARD READER. CLOSERS.
- 104REPLACE DOORS, HARDWARE & FRAME. PAIR 44" X 7'-0" VIEKLITE, HOLLOW METAL. PANIC BARS, ELECTRIC STRIKE & CARD READER. CLOSER.
- 105REPLACE DOOR & HARDWARE. FRAME TO REMAIN. 44" X 7'-0" FLUSH, HOLLOW METAL. PANIC BARS. CONTINUOUS HINGE & HOLD OPEN. CLOSER.
- 200REPLACE DOOR, FRAME TO REMAIN. 3'-0" X 7'-0" VIEKLITE, HOLLOW METAL. PANIC HARDWARE, CLOSER.
- 201REPLACE DOOR & FRAME. 3'-0" X 7'-0" VIEKLITE, HOLLOW METAL. PANIC HARDWARE, CLOSER.
- 202REPLACE DOOR & FRAME. 3'-0" X 7'-0" FLUSH, HOLLOW METAL. STORAGE ROOM.
- 203REPLACE DOOR & FRAME. 3'-0" X 7'-0" FLUSH, HOLLOW METAL. PANIC HARDWARE, CLOSER.
- 204REPLACE DOOR, FRAME TO REMAIN. 3'-0" X 7'-0" HALF GLASS, HOLLOW METAL. PANIC HARDWARE, CLOSER.
- 205REPLACE DOORS & FRAME, PAIR 3'-0" X 7'-0" HALF GLASS, HOLLOW METAL. PANIC HARDWARE, CLOSER.

RBS DESIGN GROUP

Architecture

1111 Main Street, Suite 200
Dawson Springs, KY 40303
Phone: 270-683-1959 Fax: 270-683-2246
E-Mail: office@rbsdesigngroup.com

ALL RIGHTS RESERVED
THIS DRAWING IS THE PROPERTY OF RBS DESIGN GROUP. IT IS TO BE USED ONLY FOR THE PROJECT AND SITE SPECIFICALLY IDENTIFIED HEREON. IT IS NOT TO BE REPRODUCED, COPIED, OR TRANSMITTED IN ANY FORM OR BY ANY MEANS, ELECTRONIC OR MECHANICAL, INCLUDING PHOTOCOPYING, RECORDING, OR BY ANY INFORMATION STORAGE AND RETRIEVAL SYSTEM, WITHOUT THE WRITTEN PERMISSION OF RBS DESIGN GROUP.
DO NOT SCALE DRAWINGS
WE ENDORSE NONE OF THE PRODUCTS OR SERVICES OF ANY OTHER FIRM OR INDIVIDUAL. WE ARE NOT RESPONSIBLE FOR THE ACTIONS OF ANY OTHER FIRM OR INDIVIDUAL.

JOB NUMBER
Y20052

DRAWN BY
SWM

CHECKED BY
CTT

DATE
7/19/21

REVISIONS

| NO. | DATE | |
|-----|------|--|
| | | |
| | | |
| | | |
| | | |

DAWSON SPRINGS INDEPENDENT SCHOOLS
DSHS HVAC RENOVATION
DAWSON SPRINGS, KENTUCKY

DOOR & FRAME SCHEDULE & DETAILS

SHEET NUMBER

A5.1