



FIELD OBSERVATION REPORT

East Hardin Middle School, Hardin County Schools, Elizabethtown, KY 201752.01 - CA8

Date: 6/10/2021

Time: 10:30 AM ET

Weather: Overcast/Rain, 75 degrees

Observed by: Joseph Jones

Report No: 54

Est. Completion: 92%

Present on Site:

Gerald Jones, General Trades, Polished Concrete, Steel Erectors, Glazers, Tile Setters, Ceiling Installers, Vinyl Flooring Installers, Bleacher Installers, Science Casework Installers, Painters, Electricians

1. Work in Progress.

- a. General trades were installing accessories.
- b. Polished concrete finishers were working in the corridors in Areas C and D.
- c. Stewart Richey's crews were preparing the steel stairs for the installation of stainless-steel handrails.
- d. Glazers were working on the curtainwall at the east entry.
- e. Tile setters were installing tile in the student toilets.
- f. Ceiling installers were installing ceiling grid in the main corridor.
- g. Vinyl flooring installers were laying sheet vinyl flooring in the Cafeteria.
- h. Bleacher installers were assembling the bleachers in the Gym.
- i. Science casework installers were placing cabinets and countertops.
- j. Painters were painting walls and soffits in Areas A and B.
- k. Electricians were pulling wire and installing light fixtures.

2. General Observations

- a) The weather was wet and warm. The site was mostly wet from heavy rains earlier in the day with more rain on the way. Rain is predicted through the weekend.

Due to the site being wet, sitework has been limited. Whittenberg was able to layout more sidewalks and curbs and pour half of the walk at the bus loading area. D & M Electrical must install the conduits to the site lighting locations before the lots and drives can be paved.

Edgar Belle was installing accessories and specialties. Due to the toilet partitions being cut to the wrong size, the correct partitions will not arrive on site until the end of June.

Extreme Polishers were finishing concrete slabs including the stained blue accent areas in the corridors. Unfortunately, someone had damaged the finished corridor by the Cafeteria. There was a long scratch extending over several of the panels in the slab. We decided that to have them grind deeper to remove the scratch but to leave the

stained areas as was. The scratch did not show as much where the concrete was stained.

Shane Krutz and I discussed the absence of lateral wall bracing on non-load bearing walls with J.W. Minton of Stewart Richey since their scope of work included providing and the installation of the bracing. Shane surveyed the building and found that one, incomplete brace was installed on the free-standing CMU wall in the Kitchen. J.W. was going to discuss the installation of the bracing with his foreman. Obviously, this work needs to be done before ceiling tiles are installed along these walls.

Carmicle's masons had sealed the sample panel. It was approved by representatives of HCS and JRA. In the progress meeting, Rob Deal commented that the beam pockets in the fire walls must be filled with mortar. Here again, this work must be done before the ceiling tiles are installed at these locations.

Dixie Exteriors needs dry weather to complete their work. The site continues to be too soft for the lifts to be used around most of the building.

Kalkreuth's sheet metal installers had installed the wood grained sheet metal ceilings in the Library/Media Center and at the west entry to the building. They have a good deal of work to do on the metal and flat roof areas, soffits, and the metal roofing on the canopies and maintenance building when the weather permits. Apparently, they do not yet have all the materials that they need to do this work.

Lake Cumberland's glazers had been installing the main entrance curtainwall assembly almost completing the main framing. The glass and doors were in place. The face caps and sealants remain to be done.

The ceiling installers were completing grid on the first floor of the main corridor. Ceiling tiles can be installed when all work above ceilings is in place and an above ceiling inspection has been conducted by STW and the building inspector. The masonry and structural work noted above must be in place.

Toadvine's crew was installing the movable bleachers. They were about 70% complete while I was on site. Gerald has told all other workers that they are to stay out of the Gym if they have no work to do in the space.

Ted McClain's crew was installing the sheet vinyl flooring in the Cafeteria. This includes the striping and lane areas for a basketball court.

The painters were continuing to apply paint to the block and gypsum panels along the main corridor in Areas A and B. They are required to repair all the damaged door frames before they apply final coats. They also are required to finish the joint between the CMU walls and the door frames before they are painted. All exposed structural steel and stair framing is required to be smooth before paint is applied. All exterior sealants must be applied such as in masonry joints.

Tile floor installers had been installing the tile in the student toilets on the first floor.

GBMC's mechanical installers continue prepare the heat pump units for complete start up in Areas A and B.

The electricians were continuing to pull cables and wire and install light fixtures. Alliant continues to install cabling. The electricians continue to make progress but have a significant amount of work to do before the completion date.

The science classroom casework installers were making progress on the installation of cabinets. GBMC's plumbers were starting to make connections to the sinks.

- b) The site was wet from a rain earlier in the week. Very little exterior work was taking place.



- c) The southern portion of the concrete sidewalk at the bus loading area had been placed. The curb was being formed.



JRA Architects

3225 Summit Square Place, Suite 200 Lexington, KY 40509
Tel: 1-859 252-6781 Fax: (859) 255-5483 www.jrarchitects.com

- d) The west entry to the main corridor is nearing completion. Expose structural steel needs to be cleaned and made smooth prior to painting. Some of the upper glass units will be changed to spranrel glass units to block the view of structural steel above the ceiling over the lobby.



- e) A sample panel of the ground faced block had been prepared as a sample. The block was clean, mortar streaks were barely visible, the correct mortar colors were in the proper locations. HCS and JRA representatives reviewed the sample and approved it.



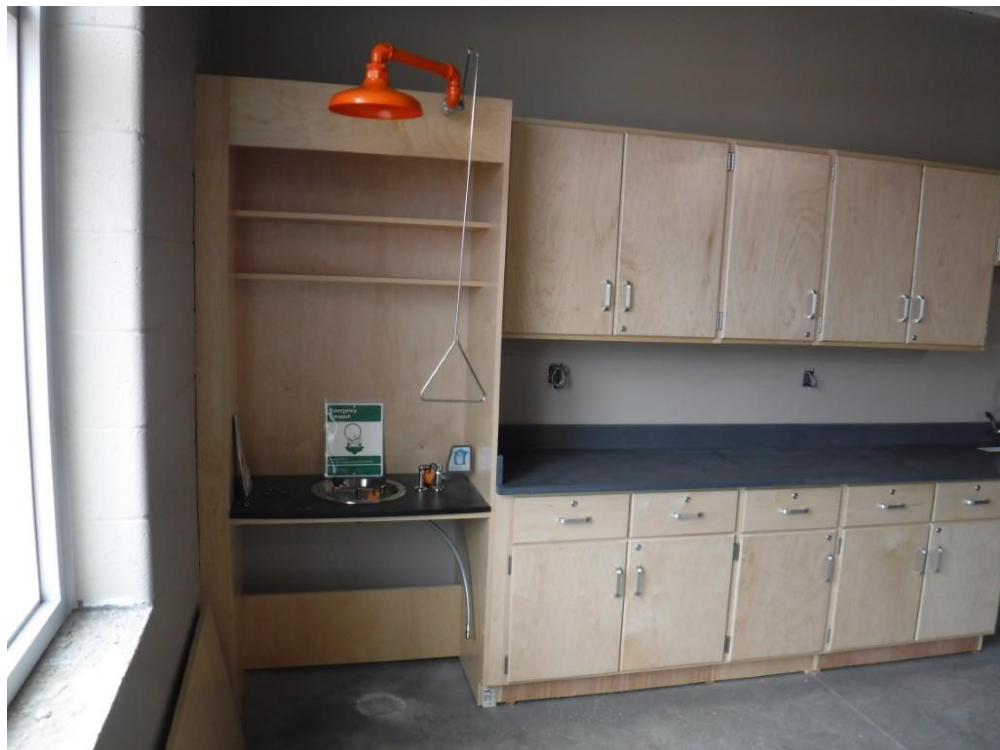
JRA Architects

3225 Summit Square Place, Suite 200 Lexington, KY 40509
Tel: 1-859 252-6781 Fax: (859) 255-5483 www.jrarchitects.com

- f) One science classroom had most of the cabinets installed. The countertops, sinks and specialty items were being installed.



- g) The emergency eyewash/shower fixtures were in place.



- h) Chain stops need to be installed in the corner cabinets to keep the handle from hitting the glass in the door of the adjoining cabinet.



- i) Cabinets were also installed in the Prep Room.



- j) Kitchen equipment is being prepared for connections to utilities.



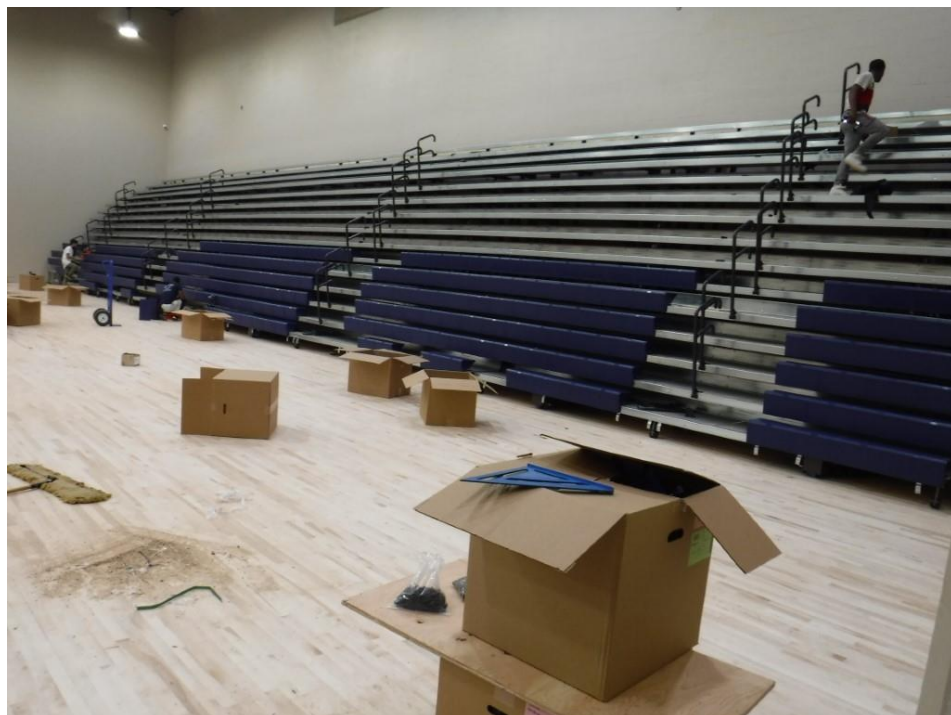
- k) We still need to evaluate the quarry tile in the Kitchen to see if epoxy grout has been left on the face of the tile. Tiles that cannot be cleaned must be replaced.



- l) Sheet vinyl flooring was being installed in the Cafeteria. Striping and lane areas were being cut into the field tile. It has been discovered that the wrong blue material was installed in the Cafeteria. Workers used the material that was indicated to be installed in the Band Room.



- m) The movable bleachers were being installed in the Gym.



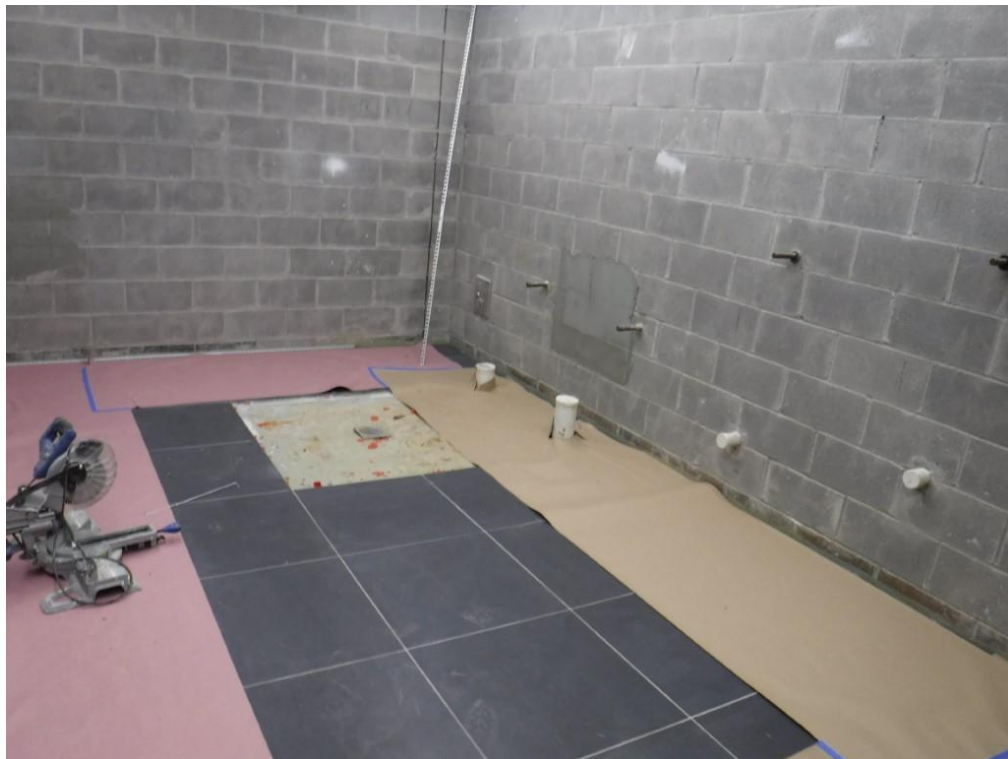
JRA Architects

3225 Summit Square Place, Suite 200 Lexington, KY 40509
Tel: 1-859 252-6781 Fax: (859) 255-5483 www.jrarchitects.com

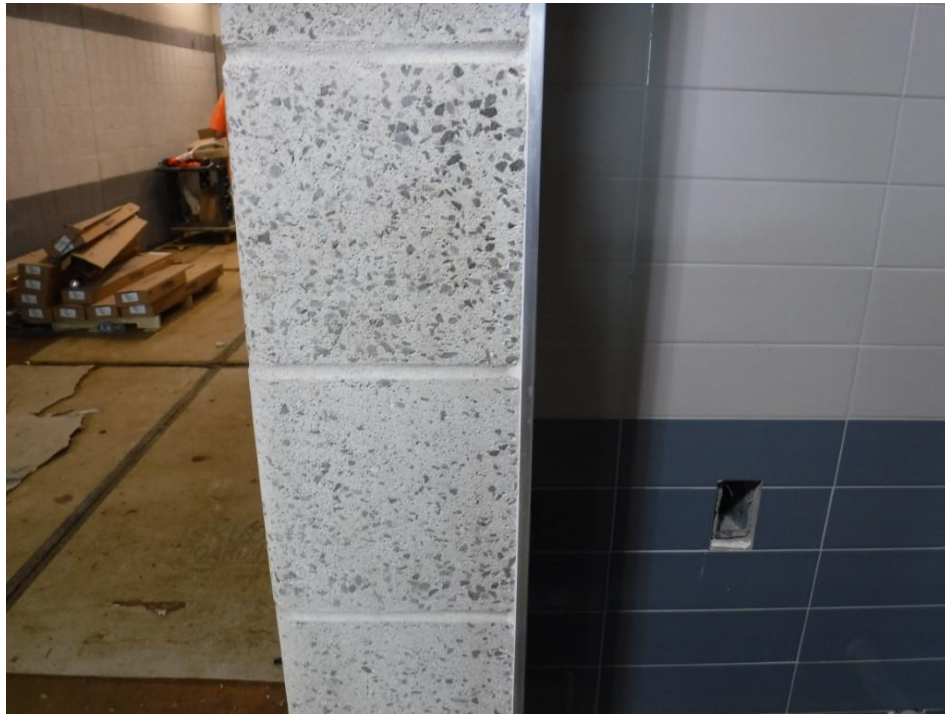
- n) The gym floor needs to be striped and finished after the movable bleachers are installed.



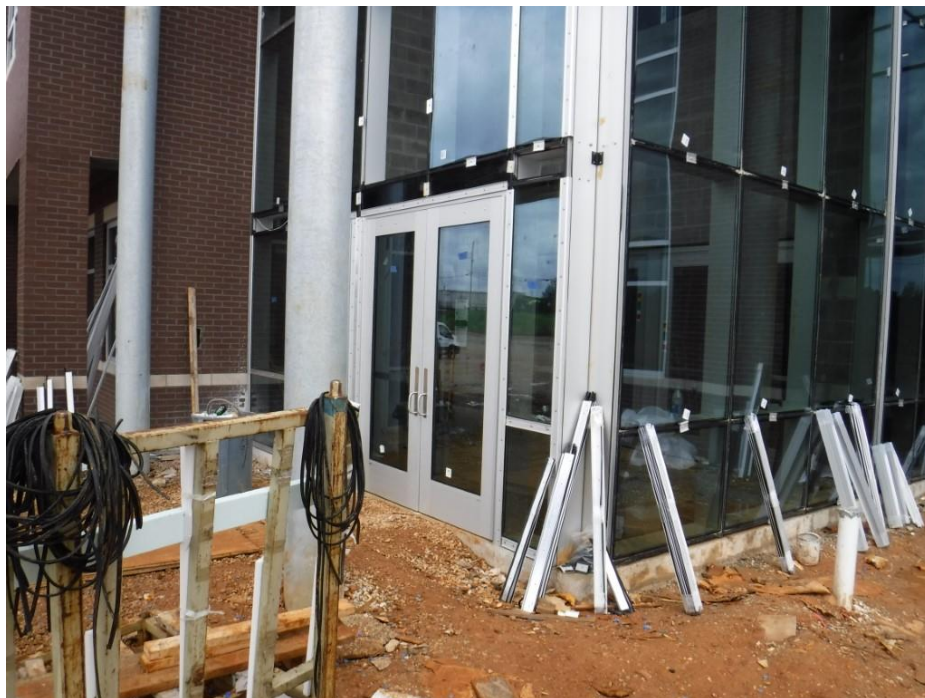
- o) Tilework was being installed in the student toilets on the first floor.



- p) In this image, the wall tile termination strip and the ground faced CMU are finished such that a straight caulk joint could be installed. This is expected at all similar tile to block joints.



- q) Aluminum doors have been installed at the main entrance. The building is very close to being total enclosed.



JRA Architects

3225 Summit Square Place, Suite 200 Lexington, KY 40509
Tel: 1-859 252-6781 Fax: (859) 255-5483 www.jrarchitects.com

- r) The wood grain sheet metal ceiling was installed in the Library/Media Center. The Axium ceiling trim at the bottom of the gypsum board fascia has prefabricated corners as directed at the bottoms of the gypsum board fascia. Note that light fixtures have also been installed.



- s) With most of the overhead work complete and the floor cleaned, the LMC is ready to have carpet installed.



JRA Architects

3225 Summit Square Place, Suite 200 Lexington, KY 40509
Tel: 1-859 252-6781 Fax: (859) 255-5483 www.jrarchitects.com

- t) Beam pockets such as this one that occurs in the fire wall must be filled with mortar to maintain the integrity of the fire resistive rating of the fire wall.



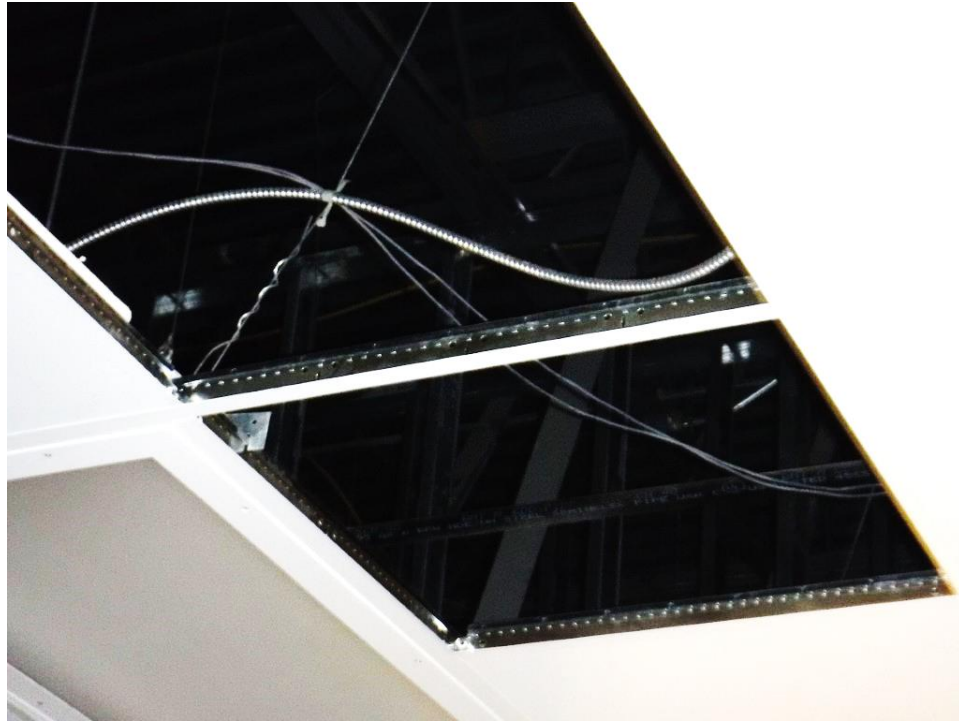
- u) At non-load bearing masonry walls intersecting the structure above such as this area, there should be braces installed as detailed on the structural drawings. These have not yet been installed.



JRA Architects

3225 Summit Square Place, Suite 200 Lexington, KY 40509
Tel: 1-859 252-6781 Fax: (859) 255-5483 www.jrarchitects.com

- v) One steel brace was installed at the free-standing wall in the Kitchen. This does not appear to be installed as detailed on the structural drawings.



- w) D&M installed the suspended light fixtures over the central stair. It has been discovered that this was the wrong fixture with the wrong mount. This must be corrected.



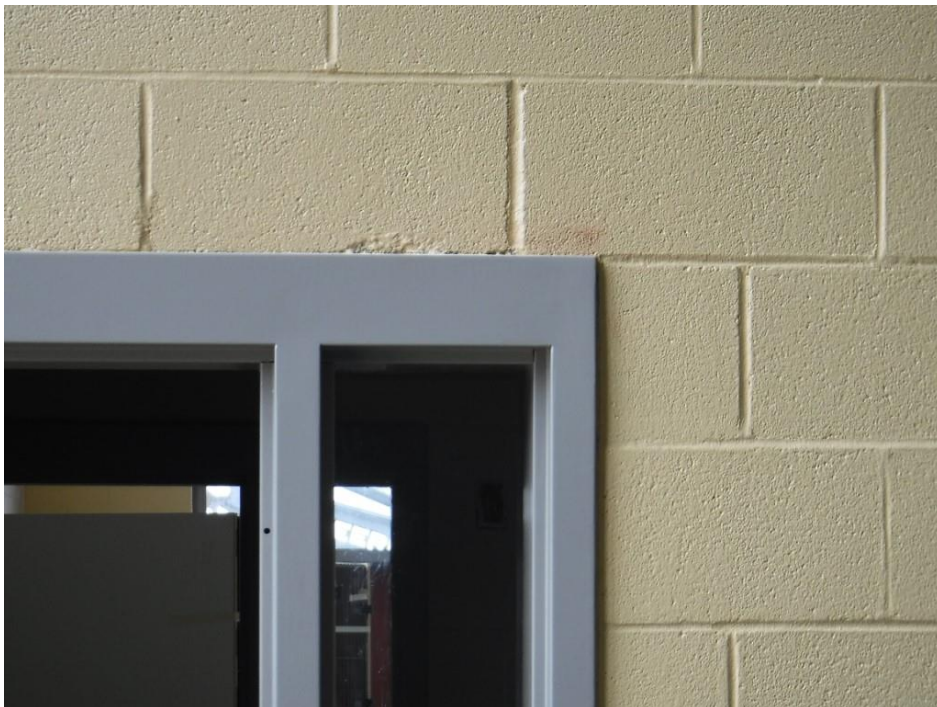
JRA Architects

3225 Summit Square Place, Suite 200 Lexington, KY 40509
Tel: 1-859 252-6781 Fax: (859) 255-5483 www.jrarchitects.com

- x) The finished surface of the polished concrete floor in the corridor by the Cafeteria was recently damaged by someone dragging material over the floor and scratching several polished concrete panels. These panels will be ground deeper to remove these scratches.



- y) The joint between the block and the tops of hollow metal door frames must be made smooth before final coats of paint are applied.



JRA Architects

3225 Summit Square Place, Suite 200 Lexington, KY 40509
Tel: 1-859 252-6781 Fax: (859) 255-5483 www.jrarchitects.com

- z) Exposed structural steel must be made smooth before the final coats of paint are applied.



- aa) It was good to see that the brick columns at the canopy were protected before the concrete walk was poured.



3. Stored Material:

- a. Block, brick, mortar and masonry materials.
- b. Aluminum curtainwall framing materials.
- c. Composite panels and metal trim.
- d. Paint and painting materials.
- e. Gypsum board materials.
- f. Ceiling grid and panels.
- g. Plumbing piping, fixtures and accessories.
- h. Conduits and electrical boxes, light fixtures, wire and materials.
- i. Data cables and accessories.
- j. Mechanical equipment, ductwork and piping.
- k. Fire suppression piping and fittings.
- l. Roofing materials.

4. Follow up items:

- a. Prepare all mockups required by the specifications for approval.
- b. All trades shall keep the building and site clean by properly disposing all bottles, bags, wrappers, trash, debris, etc.
- c. Do not damage materials installed by other trades especially hollow metal door frames and polished concrete slabs.
- d. Complete all work required above ceiling before tiles are installed.

Respectfully submitted,
Joseph Jones, AIA
JRA Architects

Cc: 201752.01, CA8