



KY GENERAL ASSEMBLY

EDUCATION POLICY IMPLICATIONS

JCPS Government Relations



New This Year

- ✓ JCPS Policy Watch, an advocacy blog
- ✓ Intern from the Master's of Public Administration Program at the University of Louisville
- ✓ Internal Advocacy Team
- ✓ Racial Equity Analyses on Policies of Interest
- ✓ Multi-departmental Policy Analysis Review Systems

JCPS 2021 Legislative Agenda

FUNDING

- SEEK and Itemized Programs
- Private School Scholarship Tax Credits

PENSIONS

- ARC funding
- Health Insurance

EQUITY

- Minority Representation on Superintendent Screening Committees
- Culturally Relevant Curriculum
- Implicit Bias Training
- Local Control



JCPS 2021 Legislative Agenda

ACCOUNTABILITY

- State Accountability Testing
- N-30 Sample Size

BOARD MEMBER BURDEN

- Personnel Appeals
- Student Placement Appeals

HEALTH

- Tobacco, Alternative Tobacco, Vapor Products
- Student Mental Health





NEXT STEPS

Designing more sophisticated systems
for increased advocacy and outreach.

1

RESEARCH

- ✓ Build a bank of research from which to draw for the upcoming 2022 General Assembly.
- ✓ Collect feedback from JCPS Cabinet and others to identify potential legislative needs.
- ✓ Assess current policy systems and identify ways to build and streamline the work.





2

STRATEGIZE

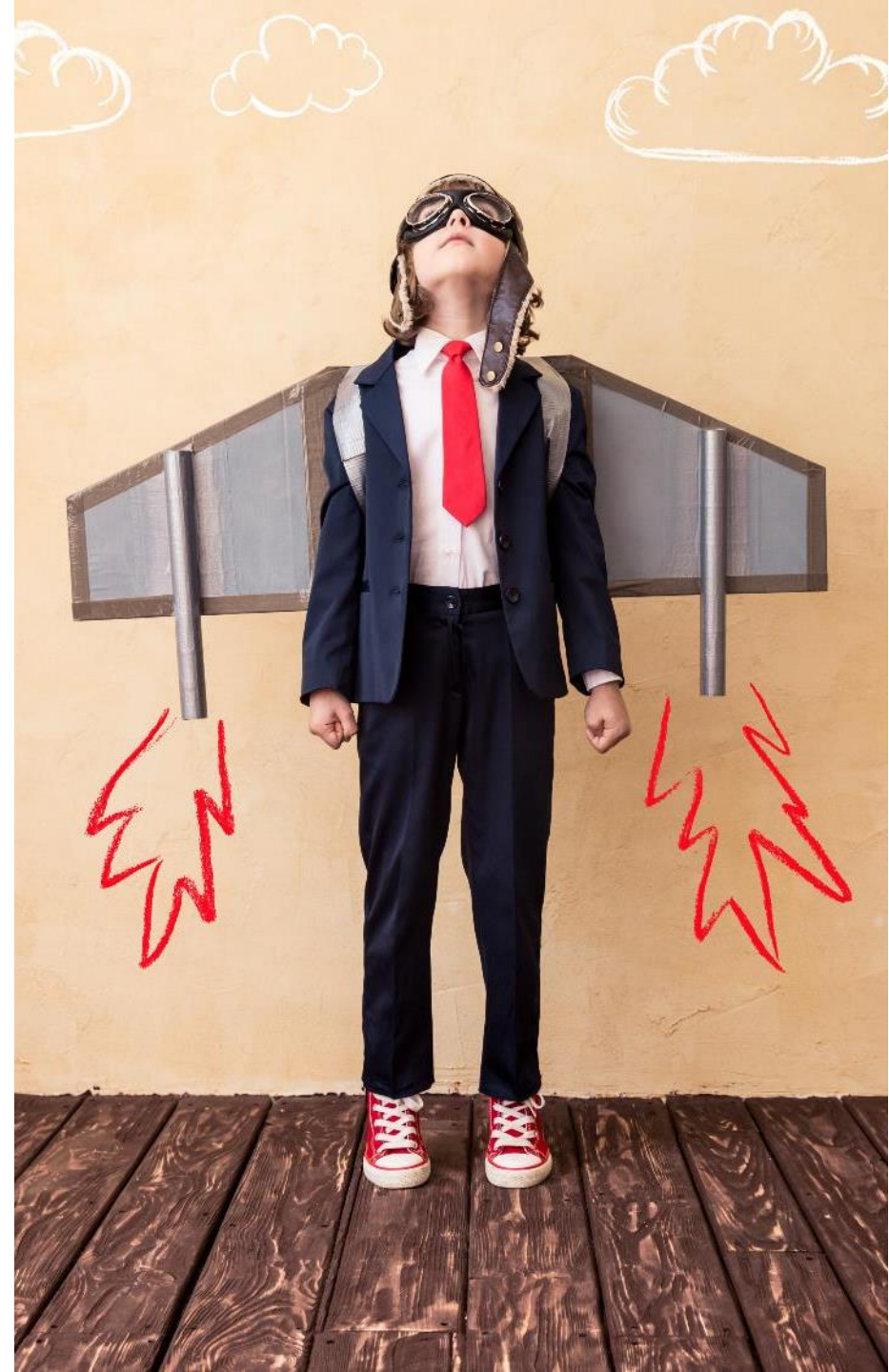
Design an interim strategy that:

- ✓ Is student-centered
- ✓ Builds upon racial equity efforts
- ✓ Targets misperceptions
- ✓ Empowers stakeholders
- ✓ Informs leaders with research that supports advocacy for public policy shifts

3

INITIATE

- ✓ Strengthen relationships with legislative leaders.
- ✓ Bring research-based information to begin critical conversations.
- ✓ Build and strengthen statewide coalitions to advance conversations about racial equity in public policy.
- ✓ Bring appropriate public, corporate, and nonprofit interests to the table for each issue.





“WHAT HAPPENS IN OUR CLASSROOMS
TODAY
IMPACTS WHAT HAPPENS IN OUR WORLD
TOMORROW.

—DR. MARTY POLLIO, SUPERINTENDENT



Questions?

THANK YOU