

UPPER LEVEL HVAC SCOPE

MARCUM  
ENGINEERING, LLC  
585 SOUTH 17TH STREET,  
PADUCAH, KENTUCKY 42002  
PHONE: 270.444.8274  
WWW.MARCUMENGINEERING.NET  
COPYRIGHT © 2021 MARCUM ENGINEERING, LLC

RBS DESIGN GROUP  
Architecture

ALL RIGHTS RESERVED.  
THIS DRAWING IS THE PROPERTY OF RBS DESIGN GROUP. IT IS TO BE USED ONLY FOR THE PROJECT AND SITE SPECIFICALLY IDENTIFIED HEREON. NO PART OF THIS DRAWING IS TO BE REPRODUCED OR TRANSMITTED IN ANY FORM OR BY ANY MEANS, ELECTRONIC OR MECHANICAL, INCLUDING PHOTOCOPYING, RECORDING, OR BY ANY INFORMATION STORAGE AND RETRIEVAL SYSTEM, WITHOUT THE WRITTEN PERMISSION OF RBS DESIGN GROUP.

|            |              |
|------------|--------------|
| JOB NUMBER | 20204        |
| DRAWN BY   |              |
| CHECKED BY |              |
| DATE       | MAY 17, 2021 |

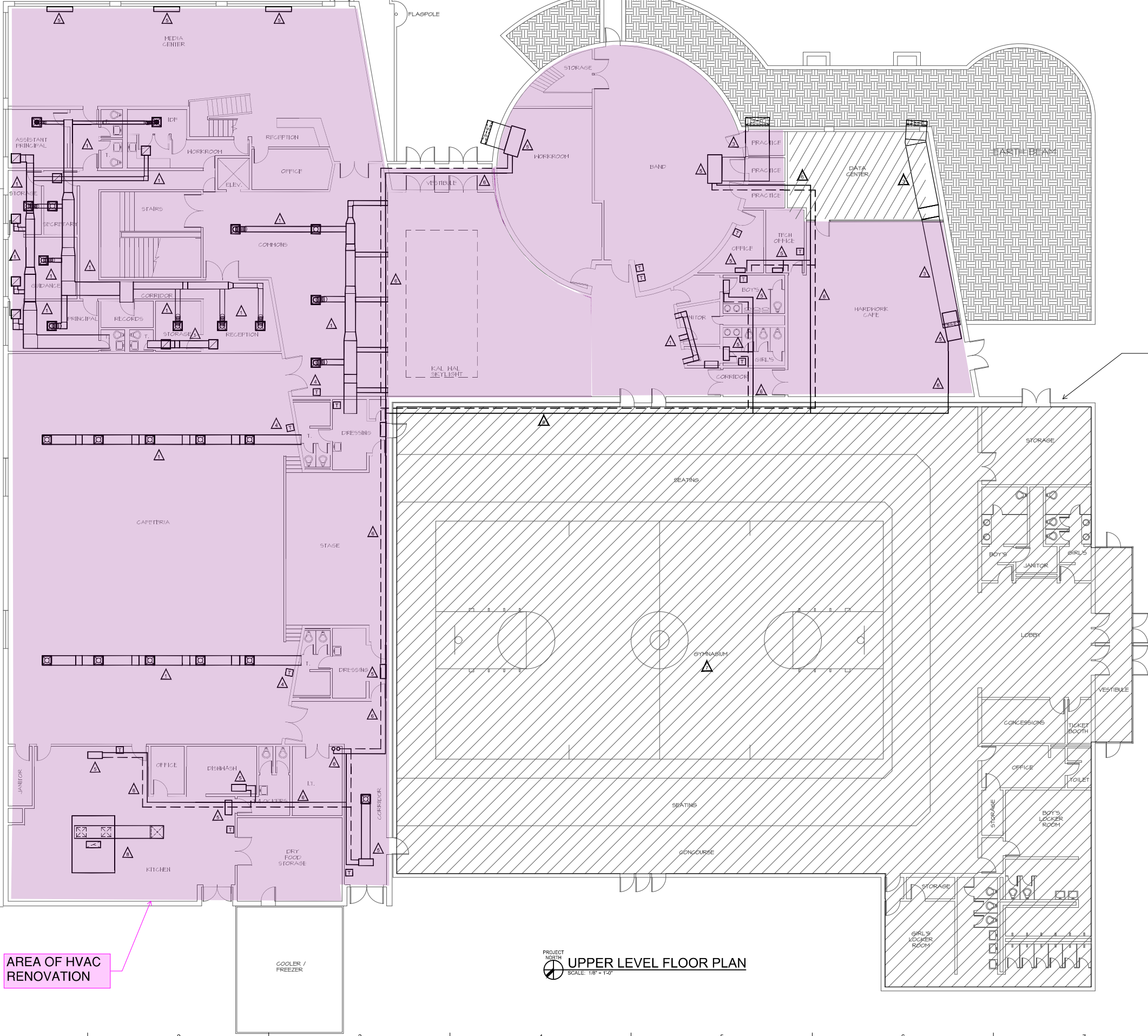
|           |     |      |
|-----------|-----|------|
| REVISIONS | NO. | DATE |
|           | 1   |      |



DAWSON SPRINGS INDEPENDENT SCHOOLS  
DAWSON SPRINGS HIGH SCHOOL  
DAWSON SPRINGS, KENTUCKY

SHEET NUMBER

1 OF 5



PROJECT NORTH  
UPPER LEVEL FLOOR PLAN  
SCALE: 1/8" = 1'-0"

LOWER LEVEL HVAC SCOPE

MARCUM  
ENGINEERING, LLC

1801 SOUTH 17TH STREET,  
PADUCAH, KENTUCKY 42002  
PHONE: 270.444.8274  
WWW.MARCUMENGINEERING.NET  
COPYRIGHT © 2021 MARCUM ENGINEERING, LLC

RBS DESIGN GROUP  
Architecture

724 Market Place, Paducah, KY 42001  
Phone: 270.444.8274 Fax: 270.444.8275  
www.rbsdesigngroup.com

ALL RIGHTS RESERVED  
THIS DRAWING IS THE PROPERTY OF RBS DESIGN GROUP. IT IS TO BE USED ONLY FOR THE PROJECT AND SITE SPECIFICALLY IDENTIFIED HEREON. NO PART OF THIS DRAWING IS TO BE REPRODUCED OR TRANSMITTED IN ANY FORM OR BY ANY MEANS, ELECTRONIC OR MECHANICAL, WITHOUT PERMISSION IN WRITING FROM RBS DESIGN GROUP. VIOLATION OF THIS NOTICE IS A CRIMINAL OFFENSE UNDER KENTUCKY LAW.

|            |              |
|------------|--------------|
| JOB NUMBER | 20204        |
| DRAWN BY   |              |
| CHECKED BY |              |
| DATE       | MAY 17, 2021 |

|           |     |      |
|-----------|-----|------|
| REVISIONS | NO. | DATE |
|           | 1   |      |
|           | 2   |      |
|           | 3   |      |
|           | 4   |      |

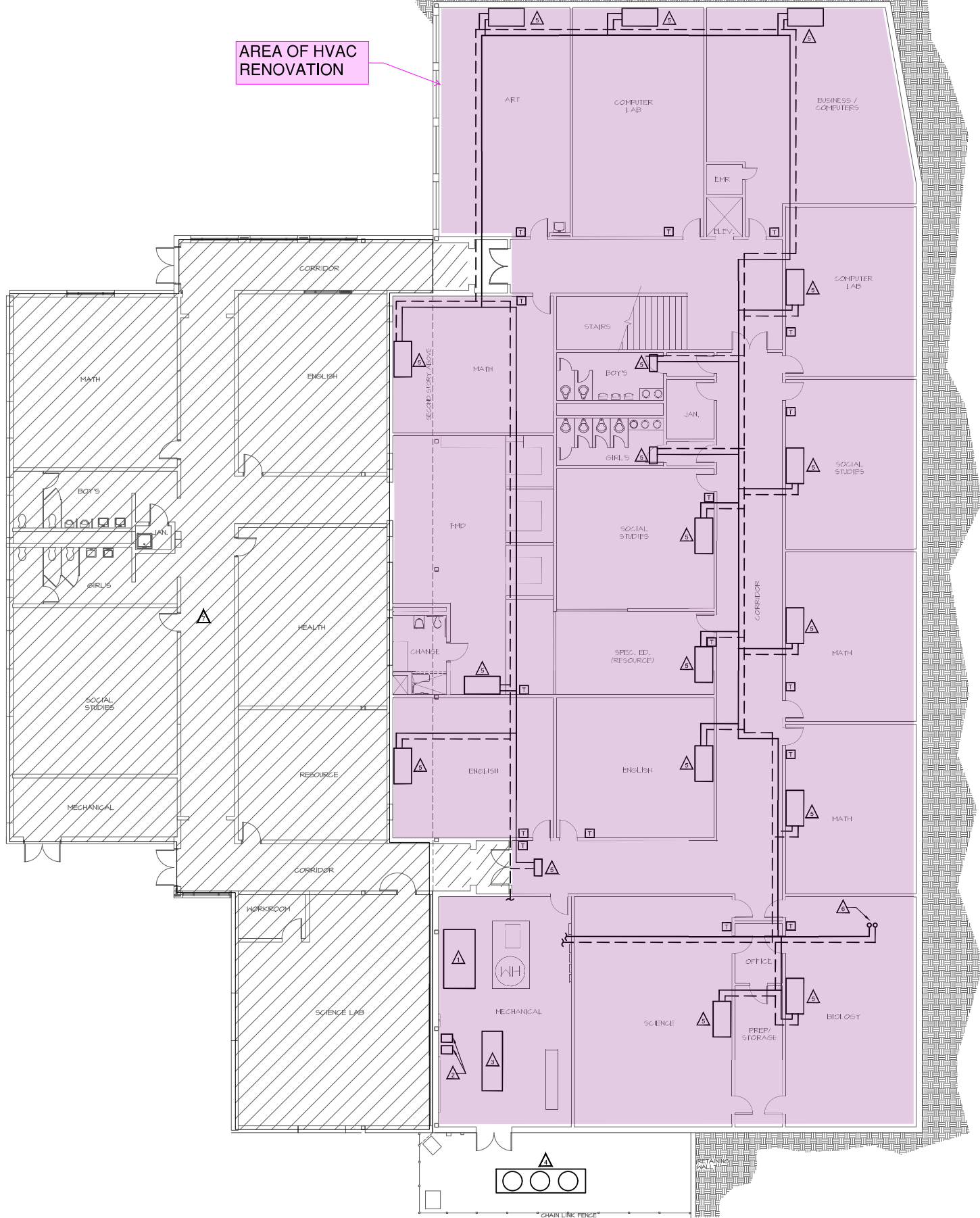


DAWSON SPRINGS INDEPENDENT SCHOOLS  
DAWSON SPRINGS HIGH SCHOOL  
DAWSON SPRINGS, KENTUCKY

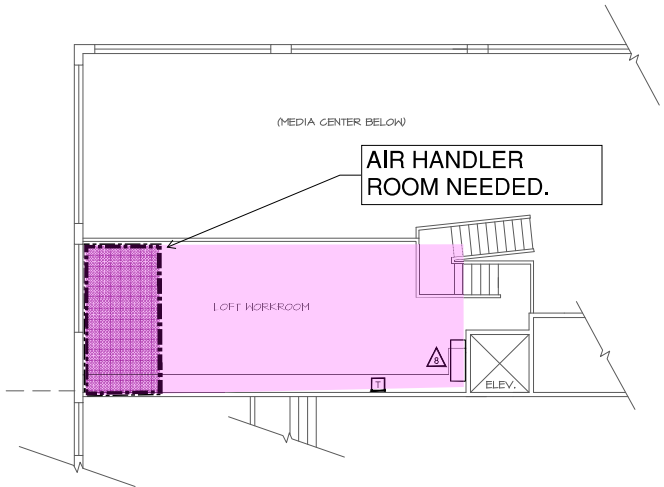
SHEET NUMBER

2 OF 5

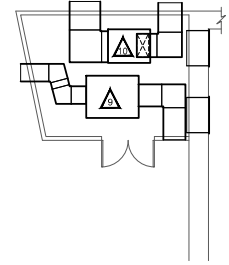
AREA OF HVAC  
RENOVATION



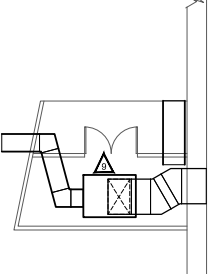
PROJECT NORTH  
SCALE: 1/8" = 1'-0"  
LOWER LEVEL FLOOR PLAN



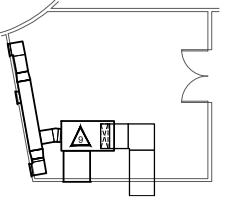
PROJECT NORTH  
SCALE: 1/8" = 1'-0"  
UPPER LEVEL LOFT/WORKROOM PLAN  
(ABOVE MEDIA CENTER)



PROJECT NORTH  
SCALE: 1/8" = 1'-0"  
UPPER LEVEL MEZZANINE PLANS  
(ABOVE DRESSING ROOMS)



PROJECT NORTH  
SCALE: 1/8" = 1'-0"  
UPPER LEVEL MEZZANINE PLAN  
(ABOVE COMMONS AREA)



PROJECT NORTH  
SCALE: 1/8" = 1'-0"  
UPPER LEVEL MEZZANINE PLAN  
(ABOVE RECORDS AREA)

UPPER LEVEL LIGHTING SCOPE



**RBS DESIGN GROUP**  
Architecture

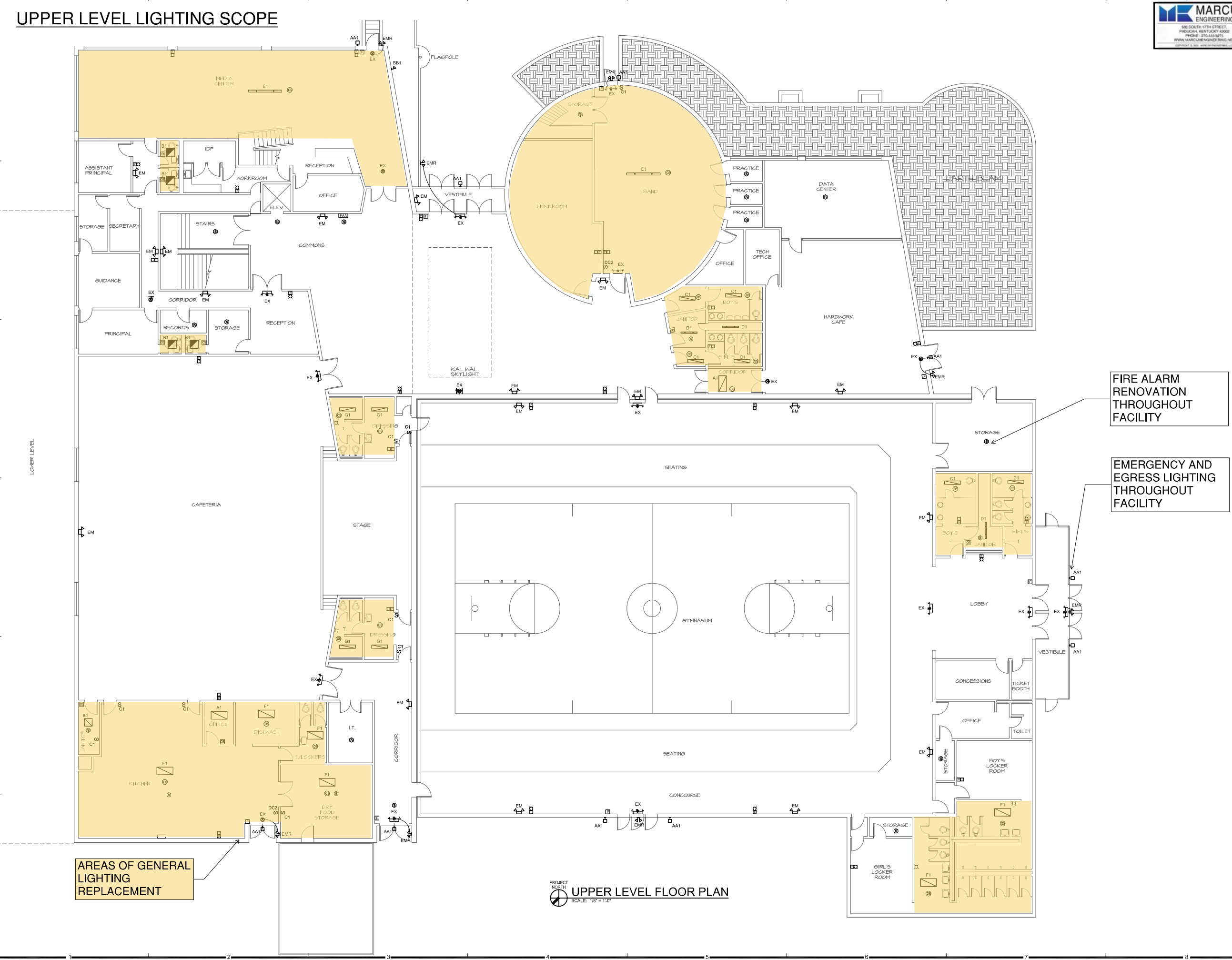
ALL RIGHTS RESERVED  
THIS DRAWING IS THE PROPERTY OF RBS DESIGN GROUP. IT IS TO BE USED ONLY FOR THE PROJECT AND SITE SPECIFICALLY IDENTIFIED HEREON. NO PART OF THIS DRAWING IS TO BE REPRODUCED OR TRANSMITTED IN ANY FORM OR BY ANY MEANS, ELECTRONIC OR MECHANICAL, WITHOUT PERMISSION IN WRITING FROM RBS DESIGN GROUP.

|            |              |
|------------|--------------|
| JOB NUMBER | 20204        |
| DRAWN BY   |              |
| CHECKED BY |              |
| DATE       | MAY 17, 2021 |

|           |     |      |
|-----------|-----|------|
| REVISIONS | NO. | DATE |
|           | 1   |      |
|           | 2   |      |
|           | 3   |      |
|           | 4   |      |



DAWSON SPRINGS INDEPENDENT SCHOOLS  
DAWSON SPRINGS HIGH SCHOOL  
DAWSON SPRINGS, KENTUCKY



LOWER LEVEL LIGHTING SCOPE

MARCUM  
ENGINEERING, LLC

180 SOUTH 17TH STREET,  
PADUCAH, KENTUCKY 42002  
PHONE: 270.444.8274  
WWW.MARCUMENGINEERING.NET  
COPYRIGHT © 2021 MARCUM ENGINEERING, LLC

RBS DESIGN GROUP  
Architecture

721 Market Place, Paducah, KY 42001  
Phone: 270.444.8274 Fax: 270.444.8275  
www.rbsdesigngroup.com

ALL RIGHTS RESERVED  
THIS DRAWING IS THE PROPERTY OF RBS DESIGN GROUP. IT IS TO BE USED ONLY FOR THE PROJECT AND SITE SPECIFICALLY IDENTIFIED HEREON. NO PART OF THIS DRAWING IS TO BE REPRODUCED OR TRANSMITTED IN ANY FORM OR BY ANY MEANS, ELECTRONIC OR MECHANICAL, INCLUDING PHOTOCOPYING, RECORDING, OR BY ANY INFORMATION STORAGE AND RETRIEVAL SYSTEM, WITHOUT THE WRITTEN PERMISSION OF RBS DESIGN GROUP.

|            |              |
|------------|--------------|
| JOB NUMBER | 202004       |
| DRAWN BY   |              |
| CHECKED BY |              |
| DATE       | MAY 17, 2021 |

|           |     |      |
|-----------|-----|------|
| REVISIONS | NO. | DATE |
|           | 1   |      |
|           | 2   |      |
|           | 3   |      |
|           | 4   |      |



DAWSON SPRINGS INDEPENDENT SCHOOLS  
DAWSON SPRINGS HIGH SCHOOL  
DAWSON SPRINGS, KENTUCKY

EMERGENCY AND  
EGRESS LIGHTING  
THROUGHOUT  
FACILITY

PROJECT NORTH  
SCALE: 1/8" = 1'-0"  
UPPER LEVEL LOFT/WORKROOM PLAN  
(ABOVE MEDIA CENTER)

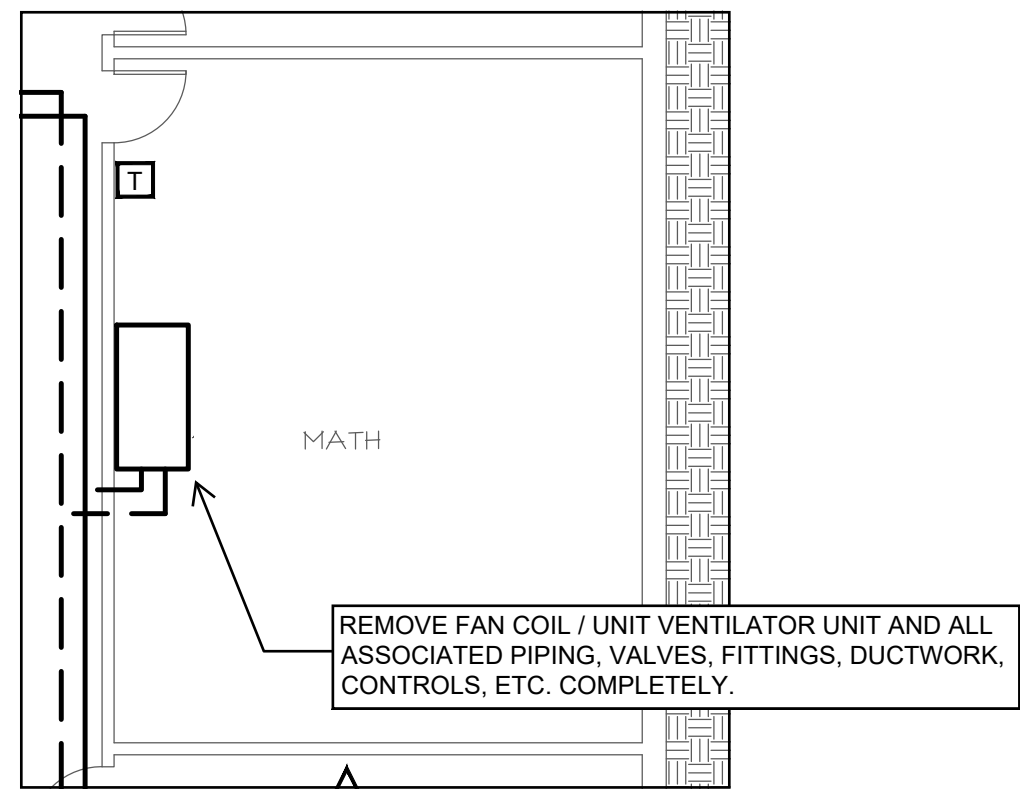
AREAS OF GENERAL  
LIGHTING  
REPLACEMENT

FIRE ALARM  
RENOVATION  
THROUGHOUT  
FACILITY

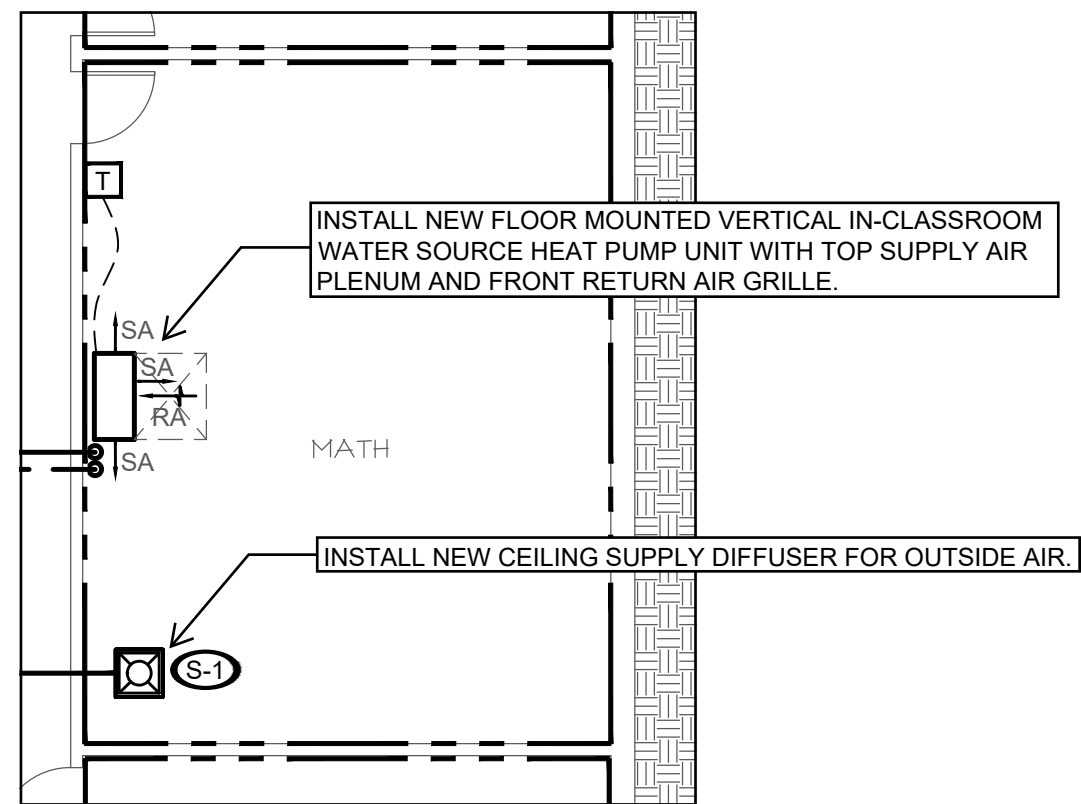
PROJECT NORTH  
SCALE: 1/8" = 1'-0"  
LOWER LEVEL FLOOR PLAN



TYPICAL LOWER LEVEL CLASSROOM HVAC SCOPE OF WORK

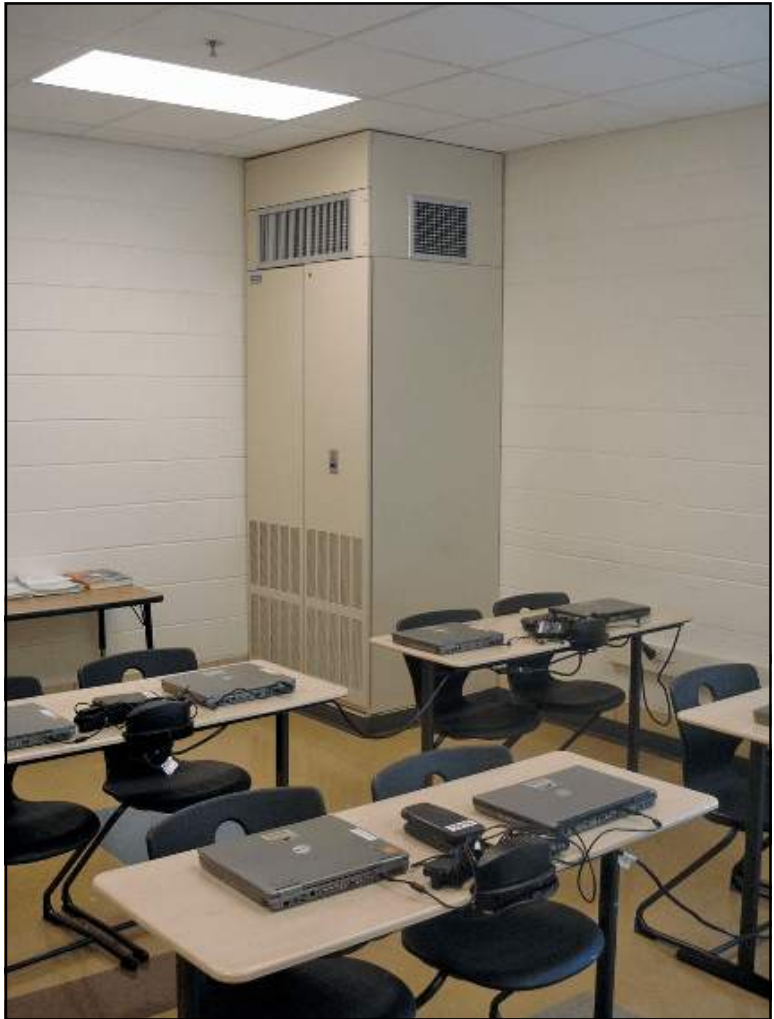


TYPICAL LOWER LEVEL CLASSROOM DEMO



TYPICAL LOWER LEVEL CLASSROOM NEW WORK

IN-CLASSROOM HVAC EXAMPLES



# Changeair

Water Source Heat Pump Classroom Air Handler

IN-ROOM HVAC



## Changeair Senior Performance that Resonates with owners

The Senior Water Source Heat Pump soundly provides thermal comfort, efficiency and class leading acoustic performance.

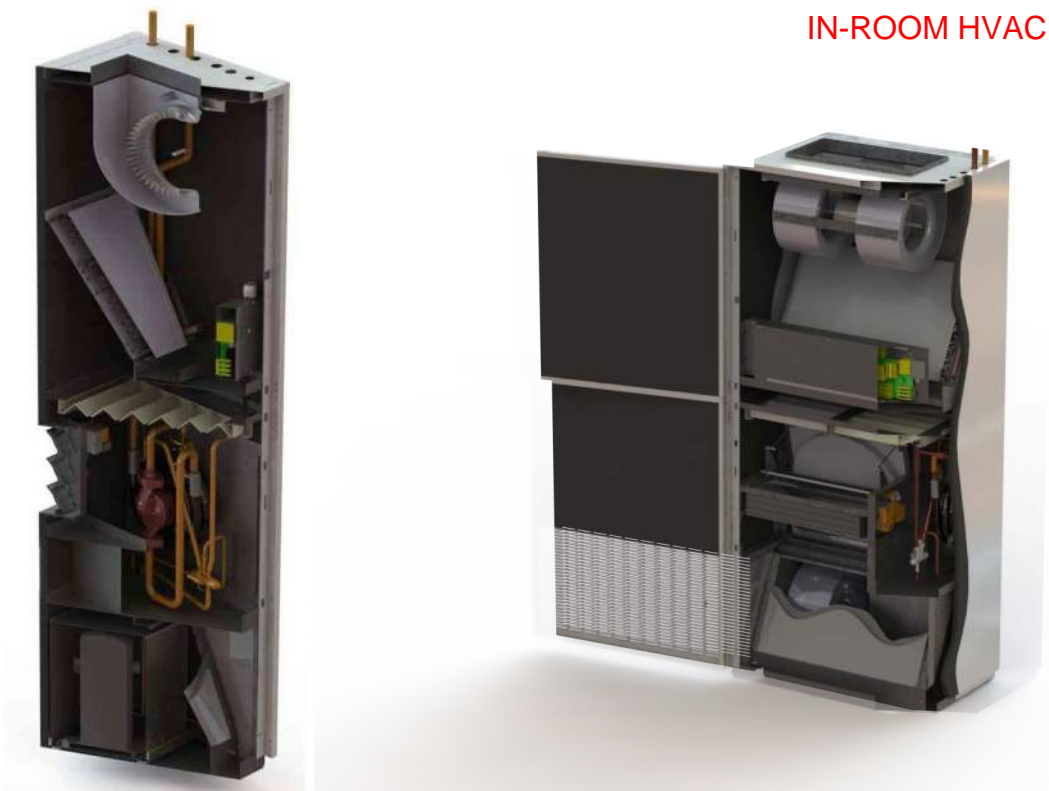
Whether building loop or geothermal the Changeair WSHP delivers efficient comfort, providing the optimum teaching environment.

Two stage compressor, integrated ERV and EC fans allow the Senior unit to balance comfort, performance, and efficiency for a serene classroom environment.



 **changeair**





Quick reference

|                  |       |  |  |
|------------------|-------|--|--|
| Design Types     | -     | Options: Hot Gas Reheat, Power Relief, Energy Recovery Wheel, and IQ Sound Package |  |
| Acoustics        | -     | Standard, or Intelligently Quiet (IQ) with Sound Power Data                        |  |
| Heating          | -     | Water Source Heat Pump   | Supplemental: Hot Water, 94% Eff. Gas, or Electric |
| Cooling          | -     | Water Source Heat Pump   |  |
| Maximum Airflow  | cfm   | Up to 1,800  |  |
| Dimensions       | units | Cabinet B – 91”h x 39.75”w x 25”d  |  |
| Filter, 1” or 2” | -     | MERV 8, 11 or 13   |  |
| Weight           | lbs   | 750  |  |

- Unmatched Sound Performance**  
With available Sound Power Data from an accredited reverberant Laboratory, NC 30 classrooms are a reality
- Flexible Applications**  
HVAC performance suitable for classrooms, office spaces, gyms, workshops and meeting rooms
- High Efficiency Unit**  
Energy recovery wheel, EC Fans, COP, EER and Economizer efficiency options
- Many Heating & Cooling Choices**  
Hot Water, Electric, High Efficiency Gas, Water Source Heat Pump
- Easy Service**  
All components are designed to facilitate maintenance, which ensures a long reliable operation
- Building Management System (BMS)**  
Select Factory Standalone or networked BACnet controls, Controls by Others, or simple DDC terminal strip
- Warranty**  
Changeair is backed by a 1 year limited warranty, other options available upon request



# Tranquility® 20 High Efficiency (TS) Series

## Submittal Data

CONCEALED HVAC WSHP

Models TSD/H/V 006-070 60Hz - HFC-410A



 LC377

Rev.: May 26, 2020



ClimateMaster works continually to improve its products. As a result, the design and specifications of each product at the time of order may be changed without notice and may not be as described herein. Please contact ClimateMaster's Customer Service Department at 1-405-745-6000 for specific information on the current design and specifications. Statements and other information contained herein are not express warranties and do not form the basis of any bargain between the parties, but are merely ClimateMaster's opinion or commendation of its products. The latest version of this document is available at [climatemaster.com](http://climatemaster.com).



**LARGE WSHP  
CAFETERIA, COMMONS**

# Tranquility<sup>®</sup> Compact High Capacity (TC\_L) Series

*Models TCH072 - 120 TCV072 - 300 60Hz - HFC - 410A*

The Tranquility Compact High Capacity product line offers large capacities products in a small foot print. When space is a concern, whether is be for new construction or retrofit, the TC\_L product line maximizes comfort needs with space constraints.

Available standard with high quality construction, reliable refrigerant circuit, standard safety controls, and many field acceptability/convertibility features.

## Advantages of the Compact High Capacity TC\_L Series:

### Product Flexibility

- Available with multiple return and supply air configurations with the ability to field convert supply air configurations with no additional parts
- Electrical box is on right side and can be field converted to left side of unit
- Electric power can enter from either side of front
- Water can be connected to either side

### Features and Options

- Dual Copeland scroll compressors (All Models)
- Dual refrigeration circuits (All Models)
- Exceeds ASHRAE 90.1 efficiencies
- Galvanized steel construction with attractive matte black epoxy powder coat painted front access panel
- Extended range (20 to 120°F, -6.7 to 48.9°C) operation (may require optional extended range insulation)
- Optional Waterside Economizer (WSE)
- Optional advanced DXM2 controls for reduced start up commissioning and service time
- Optional Variable Frequency Drive fan motor controls for optimal fan motor energy efficiency

## Unit Size

| Vertical Model |     | W     | D    | H     |
|----------------|-----|-------|------|-------|
| 072 - 120      | in. | 41.0  | 29.0 | 69.8  |
|                | cm  | 104.1 | 73.7 | 177.2 |
| 160 - 300      | in. | 82.0  | 29.0 | 69.8  |
|                | cm  | 208.2 | 73.7 | 177.2 |

| Horizontal Model |     | W    | D     | H    |
|------------------|-----|------|-------|------|
| 072 - 120        | in. | 36.3 | 84.9  | 21.6 |
|                  | cm  | 92.2 | 215.6 | 54.9 |

## STYLE & SUBSTANCE... SINGLE-ZONE INDOOR UNITS



### MANY STYLES, MANY CHOICES

There's no need to compromise when it comes to comfort. LG Duct-Free Split single-zone systems offer many styles of indoor units to enhance any decor, plus performance that lets you enjoy every room to the fullest. And they're available in a full range of capacities to perfectly match any size space, large or small. Whether you need cooling or heating, LG offers the perfect Duct-Free Split performance package.



up to  
**28.0**  
SEER

Art Cool™ Premier

Supreme Efficiency  
Wall-Mounted Indoor Units



up to  
**20.5**  
SEER

Art Cool™ Mirror

High Efficiency  
Wall-Mounted Indoor Units



### IDF CLOSETS



up to  
**20.5**  
SEER

Standard

High Efficiency  
Wall-Mounted Indoor Units



up to  
**17.0**  
SEER

Mega Standard

Wall-Mounted Indoor Units

### DRY FOOD STORAGE



up to  
**17.0**  
SEER

Ceiling Cassette

Indoor Units



### UNIQUELY LG.

IT LOOKS LIKE A WORK OF ART-AND IT IS!



up to  
**16.0**  
SEER

The ingenious **Art Cool™ Gallery Inverter Indoor Unit** cools and warms with world class efficiency...and flair. Frame any artwork or photo (20 x 20 inches or smaller) that you wish to display. And changing images couldn't be easier.



# THE MORE ROOMS THE BETTER WITH MULTI F SYSTEMS

## OUTDOOR DSHP UNITS



One LG Inverter-driven multi-zone outdoor unit can support two, three, four, or up to eight indoor units, providing personalized cooling and heating for an entire home. Compact refrigerant pipes work in tandem with wiring to link the outdoor unit with all indoor units either directly, or through a branch distribution (BD) unit (Multi F MAX systems).

### MULTIPLE ROOMS ADD UP TO MULTIPLE BENEFITS

- Long refrigerant piping lengths allow for extra design flexibility in indoor unit installation
- Each indoor unit includes its own controller
- Indoor units are available in a full range of capacities for all room sizes
- Easy installation: Little to no ductwork required; most indoor units can mount on any wall
- Indoor unit and outdoor unit dimensions ensure space saving convenience
- All-season use—heat pump models have both cooling and heating capabilities

up to  
**21.0**  
SEER



LMU187HV

Dual-Zone  
Multi F  
Outdoor  
Units



up to  
**21.7**  
SEER



LMU247HV

Tri-Zone  
Multi F  
Outdoor  
Units



up to  
**17.5**  
SEER



LMU369HV

Quad-Zone  
Multi F  
Outdoor  
Units



up to  
**18.4**  
SEER



LMU540HV

Eight-Zone  
Multi F MAX  
Outdoor  
Units



## DEDICATED OUTDOOR AIR SYSTEMS

# DOAS and HOAS Equipment for 100% Outdoor Air and Mixed Air Applications



Office Environments



Hotels and Motels



Educational Environments



Restaurants



Medical Facilities



Desert Aire's TotalAire™ Series dehumidifiers provide you the most complete solution for your dedicated outdoor air system (DOAS) and high outside air system (HOAS) applications. Our many options allow you to design the highest energy saving solution for your compliance to ASHRAE 62.1 code ventilation requirements for new construction and renovation projects. This system allows the engineer to separate the latent load of the building and deliver conditioned air to the space which will optimize the performance of the buildings convention heating and cooling systems. Rely on Desert Aire for a solution for your complete outside air needs.

OPTIMIZING SOLUTIONS THROUGH SUPERIOR DEHUMIDIFICATION TECHNOLOGY

## DIGITAL NAVIGATION

Ordering Tree   nLight Platform   Sensor Switch JOT   Photometrics   Performance Data

## FEATURES & SPECIFICATIONS

**INTENDED USE** — The BLT Best-in-Value Low Profile LED luminaire features a popular center basket design that offers a clean, versatile style and volumetric distribution. High efficacy LED light engines deliver energy savings and low maintenance compared to traditional sources. An extensive selection of configurations and options make the BLT the perfect choice for many lighting applications including schools, offices and other commercial spaces, retail, hospitals and healthcare facilities. The low profile BLT design (2-3/8") also makes it an excellent choice for renovation projects.

**CONSTRUCTION** — Prior to fabrication, BLT components are coated with a proprietary paint blend and die-formed for dimensional consistency.

The BLT reflector is available in both smooth and ribbed finishes. Choose RB from the fixture style section below for a ribbed finish.

End plates contain easy-to-position integral T-bar clips for securely attaching the luminaire to the T-grid. For additional T-grid security, optional screw on T-bar clips are available.

Diffusers are extruded from impact modified acrylic for increased durability.

LED boards and drivers are accessible from the plenum.

**OPTICS** — Volumetric illumination is achieved by creating an optimal mix of light to walls, partitions and vertical and horizontal work surfaces — rendering the interior space, objects and occupants in a more balanced, complimentary luminous environment. High performance extruded acrylic diffusers conceal LEDs and efficiently deliver light in a volumetric distribution. Four diffuser choices available — curved and square designs with ribbed or a smooth frosted finish.

**ELECTRICAL** — Long-life LEDs, coupled with high-efficiency drivers, provide superior quantity and quality of illumination for extended service life. 80% LED lumen maintenance at 60,000 hours (L80/60,000). Color Variation within 3-step MacAdam ellipse (3SDCM).

**Non-Configurable BLT:** Generic 0-10 volt dimming driver. Dims to 10%

**Configurable BLT:** available in High Efficiency (HE) versions for applications where a lower wattage (over the standard product) is required. The High Efficiency versions deliver >130 LPW and can be specified via the Lumen Package designations in the Ordering Information below.

eldoLED driver options deliver choice of dimming range, and choices for control, while assuring flicker-free, low-current inrush, 89% efficiency and low EMI.

Optional integrated nLight™ controls make each luminaire addressable — allowing it to digitally communicate with other nLight enabled controls such as dimmers, switches, occupancy sensors and photocontrols. Connection to nLight is simple. It can be accomplished with integrated nLight AIR wireless RIO, RES7 sensors, or through standard Cat-5 cabling. nLight offers unique plug-and-play convenience as devices and luminaires automatically discover each other and self-commission. nLight AIR is commissioned easily through an intuitive mobile app.

Lumen Management: Unique lumen management system (option N80) provides on board intelligence that actively manages the LED light source so that constant lumen output is maintained over the system life, preventing the energy waste created by the traditional practice of over-lighting.

Step-level dimming option allows system to be switched to 50% power for compliance with common energy codes while maintaining fixture appearance.

Driver disconnect provided where required to comply with US and Canadian codes.

**SENSOR — Integrated sensor (individual control):** Sensor Switch MSD7ADXC ((Passive infrared (PIR)) or MSDPD7ADXC ((PIR/Microphonics Dual Tech (PDT)) integrated occupancy sensor/automatic dimming photocell allows the luminaire to power off when the space is unoccupied or enough ambient light is entering the space. See page 4 for more details on the integrated sensor.

**Integrated Sensor (nLight Wired Networking):** This sensor is nLight-enabled, meaning it has the ability to communicate over an nLight network. When wired, using CAT-5 cabling, with other nLight-enabled sensors, power packs, or WallPods, an nLight control zone is created. Once linked to a Gateway, directly or via a Bridge, the zone becomes capable of remote status monitoring and control via SensorView software. See page 4 for the nLight sensor options.

**Integrated Smart Sensor (nLight Air Wireless Platform):** The RES7 sensor is nLight AIR enabled, meaning it has the ability to communicate over the wireless nLight control platform. It is available with an automatic dimming photocell, and either a digital PIR or a microphonics (PDT) dual technology occupancy sensor. It pairs to other luminaires and wall switches through our mobile app, CLAIRITY, which allows for simple sensor adjustment. See page 4 for more details on the Integrated Smart Sensor.

**Integrated Wireless Sensor (single room control):** Sensor Switch VERTEX JOT or JOTVTX15 luminaire-embedded occupancy and ambient light sensor allows the luminaire to power off when the space is unoccupied or when enough ambient light is entering the space. See page X for more details on the integrated wireless sensor.

**INSTALLATION** — The BLT's low profile design of only 2-3/8" provides increased installation flexibility especially in restrictive plenum applications. The BLT fits into standard 15/16" and narrow 9/16" T-grid ceiling systems.

Suitable for damp location.

For recessed mounting in hard ceiling applications, Drywall Grid Adapters (DGA) are available as an accessory. See Accessories section.

**LISTINGS** — CSA Certified to meet U.S. and Canadian standards. IC rated.

DesignLights Consortium® (DLC) Premium qualified product. Not all versions of this product may be DLC Premium qualified. Please check the DLC Qualified Products List at [www.designlights.org/QPL](http://www.designlights.org/QPL) to confirm which versions are qualified.

**WARRANTY** — 5-year limited warranty. Complete warranty terms located at: [www.acuitybrands.com/support/customer-support/terms-and-conditions](http://www.acuitybrands.com/support/customer-support/terms-and-conditions)

**NOTE:** Actual performance may differ as a result of end-user environment and application.

All values are design or typical values, measured under laboratory conditions at 25 °C.

Specifications subject to change without notice.

|                |
|----------------|
| Catalog Number |
| Notes          |
| Type           |

BLT Series LED

# 2BLT4

2' x 4'  
LED



ADP Diffuser Option



Ribbed Reflector Option



eldoLED



JOT  
JUST ONE TOUCH

### Specifications

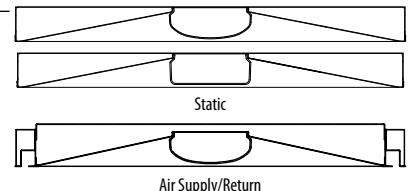
Length: 47-3/4 (121.2)

Width: 23-3/4 (60.3)

Depth: 2-3/8 (6.0)

Depth with Air supply/return: 2-3/4 (6.9)

All dimensions are inches (centimeters) unless otherwise specified.



**Embed nLight controls today. Prepare for tomorrow.**

### Now

- User-friendly install
- Enhanced energy savings
- Code compliance

### Tomorrow

- Scalability
- Space configuration
- Future-ready

## A+ Capable Luminaire

This item is an A+ capable luminaire, which has been designed and tested to provide consistent color appearance and out-of-the-box control compatibility with simple commissioning.

- All configurations of this luminaire meet the Acuity Brands' specification for chromatic consistency
- This luminaire is part of an A+ Certified solution for nLight® control networks when ordered with drivers marked by a shaded background\*
- This luminaire is part of an A+ Certified solution for nLight control networks, providing advanced control functionality at the luminaire level, when selection includes driver and control options marked by a shaded background\*

To learn more about A+, visit [www.acuitybrands.com/aplus](http://www.acuitybrands.com/aplus).

\*See ordering tree for details

**DIGITAL NAVIGATION**
[Ordering Tree](#)   [nLight Platform](#)   [Sensor Switch JOT](#)   [Photometrics](#)   [Performance Data](#)

## FEATURES & SPECIFICATIONS

**INTENDED USE** — The BLT Best-in-Value Low Profile LED luminaire features a popular center basket design that offers a clean, versatile style and volumetric distribution. High efficacy LED light engines deliver energy savings and low maintenance compared to traditional sources. An extensive selection of configurations and options make the BLT the perfect choice for many lighting applications including schools, offices and other commercial spaces, retail, hospitals and healthcare facilities. The low profile BLT design (2-3/8") also makes it an excellent choice for renovation projects.

**CONSTRUCTION** — Prior to fabrication, BLT components are coated with a proprietary paint blend and die-formed for dimensional consistency.

The BLT reflector is available in both smooth and ribbed finishes. Choose RB from the fixture style section below for a ribbed finish.

End plates contain easy-to-position integral T-bar clips for securely attaching the luminaire to the T-grid. For additional T-grid security, optional screw on T-bar clips are available.

Diffusers are extruded from impact modified acrylic for increased durability.

LED boards and drivers are accessible from the plenum.

**OPTICS** — Volumetric illumination is achieved by creating an optimal mix of light to walls, partitions and vertical and horizontal work surfaces — rendering the interior space, objects and occupants in a more balanced, complimentary luminous environment. High performance extruded acrylic diffusers conceal LEDs and efficiently deliver light in a volumetric distribution. Four diffuser choices available — curved and square designs with ribbed or a smooth frosted finish.

**ELECTRICAL** — Long-life LEDs, coupled with high-efficiency drivers, provide superior quantity and quality of illumination for extended service life. 80% LED lumen maintenance at 60,000 hours (L80/60,000). Color Variation within 3-step MacAdam ellipse (3SDCM).

**Non-Configurable BLT:** Generic 0-10 volt dimming driver. Dims to 10%

**Configurable BLT:** available in High Efficiency (HE) versions for applications where a lower wattage (over the standard product) is required. The High Efficiency versions deliver >130 LPW and can be specified via the Lumen Package designations in the Ordering Information below.

eldoLED driver options deliver choice of dimming range, and choices for control, while assuring flicker-free, low-current inrush, 89% efficiency and low EMI.

Optional integrated nLight™ controls make each luminaire addressable — allowing it to digitally communicate with other nLight enabled controls such as dimmers, switches, occupancy sensors and photocontrols. Connection to nLight is simple. It can be accomplished with integrated nLight AIR wireless RIO, RES7 sensors, or through standard Cat-5 cabling. nLight offers unique plug-and-play convenience as devices and luminaires automatically discover each other and self-commission. nLight AIR is commissioned easily through an intuitive mobile app.

Lumen Management: Unique lumen management system (option N80) provides on board intelligence that actively manages the LED light source so that constant lumen output is maintained over the system life, preventing the energy waste created by the traditional practice of over-lighting.

Step-level dimming option allows system to be switched to 50% power for compliance with common energy codes while maintaining fixture appearance.

Driver disconnect provided where required to comply with US and Canadian codes.

**SENSOR — Integrated sensor (individual control):** Sensor Switch MSD7ADXC ((Passive infrared (PIR)) or MSDPD7ADXC ((PIR/Microphonics Dual Tech (PDT)) integrated occupancy sensor/automatic dimming photocell allows the luminaire to power off when the space is unoccupied or enough ambient light is entering the space. See page 4 for more details on the integrated sensor.

**Integrated Sensor (nLight Wired Networking):** This sensor is nLight-enabled, meaning it has the ability to communicate over an nLight network. When wired, using CAT-5 cabling, with other nLight-enabled sensors, power packs, or WallPods, an nLight control zone is created. Once linked to a Gateway, directly or via a Bridge, the zone becomes capable of remote status monitoring and control via SensorView software. See page 4 for the nLight sensor options.

**Integrated Smart Sensor (nLight Air Wireless Platform):** The RES7 sensor is nLight AIR enabled, meaning it has the ability to communicate over the wireless nLight control platform. It is available with an automatic dimming photocell, and either a digital PIR or a microphonics (PDT) dual technology occupancy sensor. It pairs to other luminaires and wall switches through our mobile app, CLAIRITY, which allows for simple sensor adjustment. See page 4 for more details on the Integrated Smart Sensor.

**Integrated Wireless Sensor (single room control):** Sensor Switch VERTEX JOT or JOTVTX15 luminaire-embedded occupancy and ambient light sensor allows the luminaire to power off when the space is unoccupied or when enough ambient light is entering the space. See page X for more details on the integrated wireless sensor.

**INSTALLATION** — The BLT's low profile design of only 2-3/8" provides increased installation flexibility especially in restrictive plenum applications. The BLT fits into standard 15/16" and narrow 9/16" T-grid ceiling systems.

Suitable for damp location.

For recessed mounting in hard ceiling applications, Drywall Grid Adapters (DGA) are available as an accessory. See Accessories section.

**LISTINGS** — CSA Certified to meet U.S. and Canadian standards. IC rated.

DesignLights Consortium® (DLC) Premium qualified product. Not all versions of this product may be DLC Premium qualified. Please check the DLC Qualified Products List at [www.designlights.org/QPL](http://www.designlights.org/QPL) to confirm which versions are qualified.

**WARRANTY** — 5-year limited warranty. Complete warranty terms located at: [www.acuitybrands.com/support/customer-support/terms-and-conditions](http://www.acuitybrands.com/support/customer-support/terms-and-conditions)

**NOTE:** Actual performance may differ as a result of end-user environment and application.

All values are design or typical values, measured under laboratory conditions at 25 °C.

Specifications subject to change without notice.

|                |
|----------------|
| Catalog Number |
| Notes          |
| Type           |

**BLT Series LED**

# 2BLT4

**2' x 4'**  
LED


ADP Diffuser Option



Ribbed Reflector Option


**eldoLED**

**JOT**  
JUST ONE TOUCH

**Specifications**

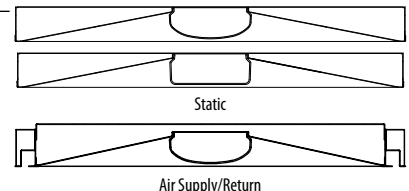
Length: 47-3/4 (121.2)

Width: 23-3/4 (60.3)

Depth: 2-3/8 (6.0)

Depth with Air supply/return: 2-3/4 (6.9)

All dimensions are inches (centimeters) unless otherwise specified.


**Embed nLight controls today. Prepare for tomorrow.**
**Now**

- User-friendly install
- Enhanced energy savings
- Code compliance

**Tomorrow**

- Scalability
- Space configuration
- Future-ready

### A+ Capable Luminaire

This item is an A+ capable luminaire, which has been designed and tested to provide consistent color appearance and out-of-the-box control compatibility with simple commissioning.

- All configurations of this luminaire meet the Acuity Brands' specification for chromatic consistency
- This luminaire is part of an A+ Certified solution for nLight® control networks when ordered with drivers marked by a shaded background\*
- This luminaire is part of an A+ Certified solution for nLight control networks, providing advanced control functionality at the luminaire level, when selection includes driver and control options marked by a shaded background\*

To learn more about A+, visit [www.acuitybrands.com/aplus](http://www.acuitybrands.com/aplus).

\*See ordering tree for details



## DIGITAL NAVIGATION

Ordering Tree   nLight Platform   Sensor Switch JOT   Photometrics   Performance Data

## FEATURES & SPECIFICATIONS

**INTENDED USE** — The BLT Best-in-Value Low Profile LED luminaire features a popular center basket design that offers a clean, versatile style and volumetric distribution. High efficacy LED light engines deliver energy savings and low maintenance compared to traditional sources. An extensive selection of configurations and options make the BLT the perfect choice for many lighting applications including schools, offices and other commercial spaces, retail, hospitals and healthcare facilities. The low profile BLT design (2-3/8") also makes it an excellent choice for renovation projects.

**CONSTRUCTION** — Prior to fabrication, BLT components are coated with a proprietary paint blend and die-formed for dimensional consistency.

The BLT reflector is available in both smooth and ribbed finishes. Choose RB from the fixture style section below for a ribbed finish.

End plates contain easy-to-position integral T-bar clips for securely attaching the luminaire to the T-grid. For additional T-grid security, optional screw on T-bar clips are available.

Diffusers are extruded from impact modified acrylic for increased durability.

LED boards and drivers are accessible from the plenum.

**OPTICS** — Volumetric illumination is achieved by creating an optimal mix of light to walls, partitions and vertical and horizontal work surfaces — rendering the interior space, objects and occupants in a more balanced, complimentary luminous environment. High performance extruded acrylic diffusers conceal LEDs and efficiently deliver light in a volumetric distribution. Four diffuser choices available — curved and square designs with ribbed or a smooth frosted finish.

**ELECTRICAL** — Long-life LEDs, coupled with high-efficiency drivers, provide superior quantity and quality of illumination for extended service life. 80% LED lumen maintenance at 60,000 hours (L80/60,000). Color Variation within 3-step MacAdam ellipse (3SDCM).

**Non-Configurable BLT:** Generic 0-10 volt dimming driver. Dims to 10%

**Configurable BLT:** available in High Efficiency (HE) versions for applications where a lower wattage (over the standard product) is required. The High Efficiency versions deliver >130 LPW and can be specified via the Lumen Package designations in the Ordering Information below.

eldoLED driver options deliver choice of dimming range, and choices for control, while assuring flicker-free, low-current inrush, 89% efficiency and low EMI.

Optional integrated nLight™ controls make each luminaire addressable — allowing it to digitally communicate with other nLight enabled controls such as dimmers, switches, occupancy sensors and photocontrols. Connection to nLight is simple. It can be accomplished with integrated nLight AIR wireless RIO, RES7 sensors, or through standard Cat-5 cabling. nLight offers unique plug-and-play convenience as devices and luminaires automatically discover each other and self-commission. nLight AIR is commissioned easily through an intuitive mobile app.

Lumen Management: Unique lumen management system (option N80) provides on board intelligence that actively manages the LED light source so that constant lumen output is maintained over the system life, preventing the energy waste created by the traditional practice of over-lighting.

Step-level dimming option allows system to be switched to 50% power for compliance with common energy codes while maintaining fixture appearance.

Driver disconnect provided where required to comply with US and Canadian codes.

**SENSOR — Integrated sensor (individual control):** Sensor Switch MSD7ADXC ((Passive infrared (PIR)) or MSDPD7ADXC ((PIR/Microphonics Dual Tech (PDT)) integrated occupancy sensor/automatic dimming photocell allows the luminaire to power off when the space is unoccupied or enough ambient light is entering the space. See page 4 for more details on the integrated sensor.

**Integrated Sensor (nLight Wired Networking):** This sensor is nLight-enabled, meaning it has the ability to communicate over an nLight network. When wired, using CAT-5 cabling, with other nLight-enabled sensors, power packs, or WallPods, an nLight control zone is created. Once linked to a Gateway, directly or via a Bridge, the zone becomes capable of remote status monitoring and control via SensorView software. See page 4 for the nLight sensor options.

**Integrated Smart Sensor (nLight Air Wireless Platform):** The RES7 sensor is nLight AIR enabled, meaning it has the ability to communicate over the wireless nLight control platform. It is available with an automatic dimming photocell, and either a digital PIR or a microphonics (PDT) dual technology occupancy sensor. It pairs to other luminaires and wall switches through our mobile app, CLAIRITY, which allows for simple sensor adjustment. See page 4 for more details on the Integrated Smart Sensor.

**Integrated Wireless Sensor (single room control):** Sensor Switch VERTEX JOT or JOTVTX15 luminaire-embedded occupancy and ambient light sensor allows the luminaire to power off when the space is unoccupied or when enough ambient light is entering the space. See page X for more details on the integrated wireless sensor.

**INSTALLATION** — The BLT's low profile design of only 2-3/8" provides increased installation flexibility especially in restrictive plenum applications. The BLT fits into standard 15/16" and narrow 9/16" T-grid ceiling systems.

Suitable for damp location.

For recessed mounting in hard ceiling applications, Drywall Grid Adapters (DGA) are available as an accessory. See Accessories section.

**LISTINGS** — CSA Certified to meet U.S. and Canadian standards. IC rated.

DesignLights Consortium® (DLC) Premium qualified product. Not all versions of this product may be DLC Premium qualified. Please check the DLC Qualified Products List at [www.designlights.org/QPL](http://www.designlights.org/QPL) to confirm which versions are qualified.

**WARRANTY** — 5-year limited warranty. Complete warranty terms located at: [www.acuitybrands.com/support/customer-support/terms-and-conditions](http://www.acuitybrands.com/support/customer-support/terms-and-conditions)

**NOTE:** Actual performance may differ as a result of end-user environment and application.

All values are design or typical values, measured under laboratory conditions at 25 °C.

Specifications subject to change without notice.

|                |
|----------------|
| Catalog Number |
| Notes          |
| Type           |

BLT Series LED

# 2BLT4

2' x 4'  
LED



ADP Diffuser Option



Ribbed Reflector Option



eldoLED



JOT  
JUST ONE TOUCH

### Specifications

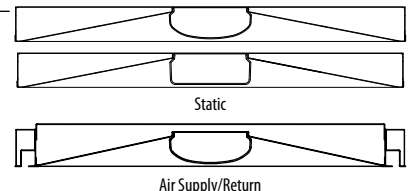
Length: 47-3/4 (121.2)

Width: 23-3/4 (60.3)

Depth: 2-3/8 (6.0)

Depth with Air supply/return: 2-3/4 (6.9)

All dimensions are inches (centimeters) unless otherwise specified.



**Embed nLight controls today. Prepare for tomorrow.**

### Now

- User-friendly install
- Enhanced energy savings
- Code compliance

### Tomorrow

- Scalability
- Space configuration
- Future-ready

## A+ Capable Luminaire

This item is an A+ capable luminaire, which has been designed and tested to provide consistent color appearance and out-of-the-box control compatibility with simple commissioning.

- All configurations of this luminaire meet the Acuity Brands' specification for chromatic consistency
- This luminaire is part of an A+ Certified solution for nLight® control networks when ordered with drivers marked by a shaded background\*
- This luminaire is part of an A+ Certified solution for nLight control networks, providing advanced control functionality at the luminaire level, when selection includes driver and control options marked by a shaded background\*

To learn more about A+, visit [www.acuitybrands.com/aplus](http://www.acuitybrands.com/aplus).

\*See ordering tree for details

**DIGITAL NAVIGATION**
[Ordering Tree](#)   [nLight Platform](#)   [Sensor Switch JOT](#)   [Photometrics](#)   [Performance Data](#)

## FEATURES & SPECIFICATIONS

**INTENDED USE** — The BLT Best-in-Value Low Profile LED luminaire features a popular center basket design that offers a clean, versatile style and volumetric distribution. High efficacy LED light engines deliver energy savings and low maintenance compared to traditional sources. An extensive selection of configurations and options make the BLT the perfect choice for many lighting applications including schools, offices and other commercial spaces, retail, hospitals and healthcare facilities. The low profile BLT design (2-3/8") also makes it an excellent choice for renovation projects.

**CONSTRUCTION** — Prior to fabrication, BLT components are coated with a proprietary paint blend and die-formed for dimensional consistency.

The BLT reflector is available in both smooth and ribbed finishes. Choose RB from the fixture style section below for a ribbed finish.

End plates contain easy-to-position integral T-bar clips for securely attaching the luminaire to the T-grid. For additional T-grid security, optional screw on T-bar clips are available.

Diffusers are extruded from impact modified acrylic for increased durability.

LED boards and drivers are accessible from the plenum.

**OPTICS** — Volumetric illumination is achieved by creating an optimal mix of light to walls, partitions and vertical and horizontal work surfaces – rendering the interior space, objects and occupants in a more balanced, complimentary luminous environment. High performance extruded acrylic diffusers conceal LEDs and efficiently deliver light in a volumetric distribution. Four diffuser choices available - curved and square designs with ribbed or a smooth frosted finish.

**ELECTRICAL** — Long-life LEDs, coupled with high-efficiency drivers, provide superior quantity and quality of illumination for extended service life. 80% LED lumen maintenance at 60,000 hours (L80/60,000). Color Variation within 3-step MacAdam ellipse (3SDCM).

**Non-Configurable BLT:** Generic 0-10 volt dimming driver. Dims to 10%

**Configurable BLT:** available in High Efficiency (HE) versions for applications where a lower wattage (over the standard product) is required. The High Efficiency versions deliver >130 LPW and can be specified via the Lumen Package designations in the Ordering Information below.

eldoLED driver options deliver choice of dimming range, and choices for control, while assuring flicker-free, low-current inrush, 89% efficiency and low EMI.

Optional integrated nLight® controls make each luminaire addressable - allowing them to digitally communicate with other nLight enabled controls such as dimmers, switches, occupancy sensors and photocontrols. Connection to nLight is simple. It can be accomplished with integrated nLight AIR wireless r10 and RES7 sensors, or through standard Cat-5 cabling. nLight offers unique plug-and-play convenience as devices and luminaires automatically discover each other and self-commission. nLight AIR is commissioned easily through an intuitive model app.

**Lumen Management:** Unique lumen management system (option N80) provides on board intelligence that actively manages the LED light source so that constant lumen output is maintained over the system life, preventing the energy waste created by the traditional practice of over-lighting.

Step-level dimming option allows system to be switched to 50% power for compliance with common energy codes while maintaining fixture appearance.

Driver disconnect provided where required to comply with US and Canadian codes.

**SENSOR** — **Integrated sensor (individual control):** Sensor Switch MSD7ADCX ((Passive infrared (PIR)) or MSDPD7ADCX ((PIR/Microphonics Dual Tech (PDT)) integrated occupancy sensor/automatic dimming photocell allows the luminaire to power off when the space is unoccupied or enough ambient light is entering the space. See page 4 for more details on the integrated sensor.

**Integrated Sensor (nLight Wired Networking):** This sensor is nLight-enabled, meaning it has the ability to communicate over an nLight network. When wired, using CAT-5 cabling, with other nLight-enabled sensors, power packs, or WallPods, an nLight control zone is created. Once linked to a Gateway, directly or via a Bridge, the zone becomes capable of remote status monitoring and control via SensorView software. See page 4 for the nLight sensor options.

**Integrated Smart Sensor (nLight Air Wireless Platform):** The RES7 sensor is nLight AIR enabled, meaning it has the ability to communicate over the wireless nLight control platform. It is available with an automatic dimming photocell, and either a digital PIR or a microphonics (PDT) dual technology occupancy sensor. It pairs to other luminaires and wall switches through our mobile app, CLAIRITY, which allows for simple sensor adjustment. See page 4 for more details on the Integrated Smart Sensor.

**Integrated Wireless Sensor (single room control):** Sensor Switch VERTEX JOT or JOTVTX15 luminaire-embedded occupancy and ambient light sensor allows the luminaire to power off when the space is unoccupied or when enough ambient light is entering the space. See page X for more details on the integrated wireless sensor.

**INSTALLATION** — The BLT's low profile design of only 2-3/8" provides increased installation flexibility especially in restrictive plenum applications. The BLT fits into standard 15/16" and narrow 9/16" T-grid ceiling systems.

Suitable for damp location.

For recessed mounting in hard ceiling applications, Drywall Grid Adapters (DGA) are available as an accessory. See Accessories section.

**LISTINGS** — CSA Certified to meet U.S. and Canadian standards. IC rated.

DesignLights Consortium® (DLC) Premium qualified product. Not all versions of this product may be DLC Premium qualified. Please check the DLC Qualified Products List at [www.designlights.org/QPL](http://www.designlights.org/QPL) to confirm which versions are qualified.

**WARRANTY** — 5-year limited warranty. Complete warranty terms located at: [www.acuitybrands.com/resources/terms-and-conditions](http://www.acuitybrands.com/resources/terms-and-conditions)

**NOTE:** Actual performance may differ as a result of end-user environment and application. All values are design or typical values, measured under laboratory conditions at 25 °C. Specifications subject to change without notice.

|                |
|----------------|
| Catalog Number |
| Notes          |
| Type           |

**BLT Series LED**


ADP Diffuser Option

# 2BLT2

2' x 2'  
LED


Ribbed Reflector Option



eldoLED


**JOT**  
JUST ONE TOUCH

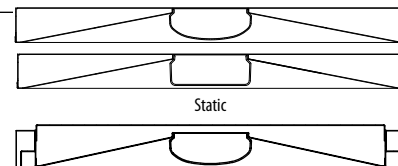
### Specifications

Length: 23-3/4 (60.3)

Width: 23-3/4 (60.3)

Depth: 2-3/8 (6.0)

Depth with Air supply/return: 2-3/4 (6.9)



All dimensions are inches (centimeters) unless otherwise specified.

Air Supply/Return

## Embed nLight controls today. Prepare for tomorrow.

### Now



User-friendly install



Enhanced energy savings



Code compliance

### Tomorrow



Scalability



Space configuration



Future-ready

## A+ Capable Luminaire

This item is an A+ capable luminaire, which has been designed and tested to provide consistent color appearance and out-of-the-box control compatibility with simple commissioning.

- All configurations of this luminaire meet the Acuity Brands' specification for chromatic consistency
- This luminaire is part of an A+ Certified solution for nLight® control networks when ordered with drivers marked by a **shaded background**\*
- This luminaire is part of an A+ Certified solution for nLight control networks, providing advanced control functionality at the luminaire level, when selection includes driver and control options marked by a **shaded background**\*

To learn more about A+, visit [www.acuitybrands.com/aplus](http://www.acuitybrands.com/aplus).

\*See ordering tree for details

## DIGITAL NAVIGATION

[Ordering Tree](#) [nLight Platform](#) [Sensor Switch JOT](#) [Photometrics](#) [Performance Data](#)

## FEATURES & SPECIFICATIONS

**INTENDED USE** — The BLT Best-in-Value Low Profile LED luminaire features a popular center basket design that offers a clean, versatile style and volumetric distribution. High efficacy LED light engines deliver energy savings and low maintenance compared to traditional sources. An extensive selection of configurations and options make the BLT the perfect choice for many lighting applications including schools, offices and other commercial spaces, retail, hospitals and healthcare facilities. The low profile BLT design (2-3/4") also makes it an excellent choice for renovation projects.

**CONSTRUCTION** — Prior to fabrication, BLT components are coated with a proprietary paint blend and die-formed for dimensional consistency.

The BLT reflector is available in both smooth and ribbed finishes. Choose RB from the fixture style section below for a ribbed finish.

End plates contain easy-to-position integral T-bar clips for securely attaching the luminaire to the T-grid. For additional T-grid security, optional screw on T-bar clips are available.

Diffusers are extruded from impact modified acrylic for increased durability.

LED boards and drivers are accessible from the plenum.

**OPTICS** — Volumetric illumination is achieved by creating an optimal mix of light to walls, partitions and vertical and horizontal work surfaces — rendering the interior space, objects and occupants in a more balanced, complimentary luminous environment. High performance extruded acrylic diffusers conceal LEDs and efficiently deliver light in a volumetric distribution. Four diffuser choices available - curved and square designs with ribbed or a smooth frosted finish.

**ELECTRICAL** — Long-life LEDs, coupled with high-efficiency drivers, provide superior quantity and quality of illumination for extended service life. 80% LED lumen maintenance at 60,000 hours (L80/60,000). Color Variation within 3-step MacAdam ellipse (3SDCM).

**Non-Configurable BLT:** Generic 0-10 volt dimming driver. Dims to 10%

**Configurable BLT:** available in High Efficiency (HE) versions for applications where a lower wattage (over the standard product) is required. The High Efficiency versions deliver >130 LPW and can be specified via the Lumen Package designations in the Ordering Information below.

eldoLED driver options deliver choice of dimming range, and choices for control, while assuring flicker-free, low-current inrush, 89% efficiency and low EMI.

Optional integrated nLight® controls make each luminaire addressable - allowing them to digitally communicate with other nLight enabled controls such as dimmers, switches, occupancy sensors and photocontrols. Connection to nLight is simple. It can be accomplished with integrated nLight AIR wireless RIO, RES7 sensors, or through standard Cat-5 cabling. nLight offers unique plug-and-play convenience as devices and luminaires automatically discover each other and self-commission. nLight AIR is commissioned easily through an intuitive mobile app.

**Lumen Management:** Unique lumen management system (option N80) provides on board intelligence that actively manages the LED light source so that constant lumen output is maintained over the system life, preventing the energy waste created by the traditional practice of over-lighting.

Step-level dimming option allows system to be switched to 50% power for compliance with common energy codes while maintaining fixture appearance.

Driver disconnect provided where required to comply with US and Canadian codes.

**SENSOR** — **Integrated sensor (individual control):** Sensor Switch MSD7ADCX ((Passive infrared (PIR)) or MSDPD7ADCX ((PIR/Microphonics Dual Tech (PDT)) integrated occupancy sensor/automatic dimming photocell allows the luminaire to power off when the space is unoccupied or enough ambient light is entering the space. See page 4 for more details on the integrated sensor.

**Integrated Sensor (nLight Wired Networking):** This sensor is nLight-enabled, meaning it has the ability to communicate over an nLight network. When wired, using CAT-5 cabling, with other nLight-enabled sensors, power packs, or WallPods, an nLight control zone is created. Once linked to a Gateway, directly or via a Bridge, the zone becomes capable of remote status monitoring and control via SensorView software. See page 4 for the nLight sensor options.

**Integrated Smart Sensor (nLight Air Wireless Platform):** The RES7 sensor is nLight AIR enabled, meaning it has the ability to communicate over the wireless nLight control platform. It is available with an automatic dimming photocell, and either a digital PIR or microphonics (PDT) dual technology occupancy sensor. It pairs to other luminaires and wall switches through our mobile app, CLAIRITY, which allows for simple sensor adjustment. See page 4 for more details on the Integrated Smart Sensor.

**Integrated Wireless Sensor (single room control):** Sensor Switch VERTEX JOT or JOTVTX15 luminaire-embedded occupancy and ambient light sensor allows the luminaire to power off when the space is unoccupied or when enough ambient light is entering the space. See page X for more details on the integrated wireless sensor.

**INSTALLATION** — The BLT's low profile design of only 2-3/4" provides increased installation flexibility especially in restrictive plenum applications. The BLT fits into standard 15/16" and narrow 9/16" T-grid ceiling systems.

Suitable for damp location.

For recessed mounting in hard ceiling applications, Drywall Grid Adapters (DGA) are available as an accessory. See Accessories section.

**LISTINGS** — CSA Certified to meet U.S. and Canadian standards. IC rated.

DesignLights Consortium® (DLC) Premium qualified product. Not all versions of this product may be DLC Premium qualified. Please check the DLC Qualified Products List at [www.designlights.org/OPL](http://www.designlights.org/OPL) to confirm which versions are qualified.

**WARRANTY** — 5-year limited warranty. Complete warranty terms located at:

[www.acuitybrands.com/support/customer-support/terms-and-conditions](http://www.acuitybrands.com/support/customer-support/terms-and-conditions)

**NOTE:** Actual performance may differ as a result of end-user environment and application.

All values are design or typical values, measured under laboratory conditions at 25 °C.

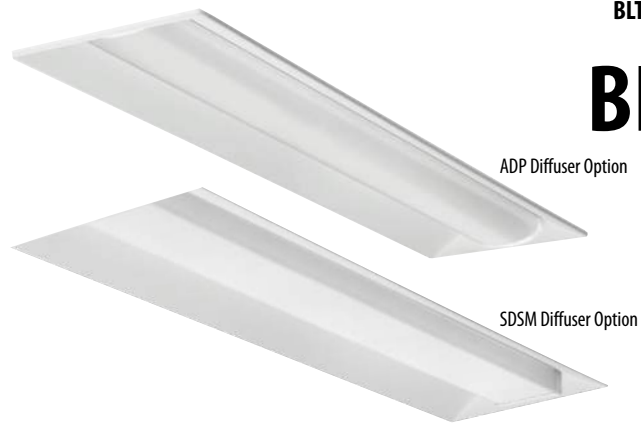
Specifications subject to change without notice.

|                |
|----------------|
| Catalog Number |
| Notes          |
| Type           |

## BLT Series LED

# BLT4

1' x 4'  
LED



### Specifications

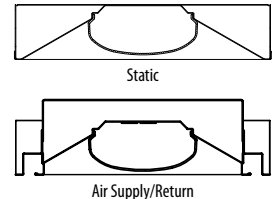
Length: 47-3/4 (121.2)

Width: 11-3/4 (29.8)

Depth: 2-3/4 (6.9)

Depth with Air supply/return: 3-5/8 (9.2)

All dimensions are inches (centimeters) unless otherwise specified.



## Embed nLight controls today. Prepare for tomorrow.

### Now

- User-friendly install
- Enhanced energy savings
- Code compliance

### Tomorrow

- Scalability
- Space configuration
- Future-ready

## A+ Capable Luminaire

This item is an A+ capable luminaire, which has been designed and tested to provide consistent color appearance and out-of-the-box control compatibility with simple commissioning.

- All configurations of this luminaire meet the Acuity Brands' specification for chromatic consistency
- This luminaire is part of an A+ Certified solution for nLight® control networks when ordered with drivers marked by a **shaded background**\*
- This luminaire is part of an A+ Certified solution for nLight control networks, providing advanced control functionality at the luminaire level, when selection includes driver and control options marked by a **shaded background**\*

To learn more about A+, visit [www.acuitybrands.com/aplus](http://www.acuitybrands.com/aplus).

\*See ordering tree for details.



## FEATURES & SPECIFICATIONS

**INTENDED USE** — The CLX is a linear lighting solution that is available in multiple lengths, lumen packages and distributions. Designed for versatility, the CLX can address virtually any indoor lighting need. The CLX is also offered in standard and high efficacy configurations and capable of being continuous row mounted or installed as a stand-alone fixture. Ideal for uplight and downlight in commercial, retail, manufacturing, warehouse, and display applications. **Certain airborne contaminants can diminish the integrity of acrylic and/or polycarbonate.** [Click here for Acrylic/Polycarbonate Compatibility table for suitable uses.](#)

**CONSTRUCTION** — Channel and cover are formed from code-gauge cold-rolled steel. Housing and lens endcaps are injection molded plastic to provide a more architectural look and feel. The endcaps come standard with a 7/8" knock out for continuous mounting but can be ordered without.

Finish: Paint options include high-gloss, baked white polyester (WH), galvanized (GALV), matte black (MB) and smoke gray (SKGY). Five-stage iron phosphate pre-treatment ensures superior paint adhesion and rust resistance.

**OPTICS** — Offered with acrylic lens and less lens configurations. Provides a choice of optical distributions including, wide, narrow, and aisle.

**ELECTRICAL** — Utilizes high-output LEDs integrated on a two-layer circuit board, ensuring cool-running operation. Optional internal pluggable wiring harness for reduced labor cost in row mounting applications. (See PLR ordering information on page 14.) Electronic LED driver is multi-volt input and 0-10V dimming standard (see Operational Data on page 12 for actual wattage consumption). This fixture is designed to withstand a maximum line surge of 2.5kV at 0.75kA combination wave for indoor locations, for applications requiring higher level of protection additional surge protection must be provided.

L70>100,000 hours at 25°C.

LEDs provide nominal 80 CRI or 90CRI at 3000 K, 3500 K, 4000 K, or 5000 K.

Lumen output up to 2,500 lumens per foot.

**INSTALLATION** — Fixture may be ceiling or wall mounted (with or without THCLX hanger or angle mounted with CLXANGBRT), pendant or stem mounted with appropriate mounting options.

**WARNING** — Removing the lens and opening the fixture during installation exposes the LEDs, putting them at risk for damage.

If you plan to surface mount the fixture, we recommend using the THCLX. This eliminates the need to open the fixture.

If you plan to continuous row mount, we recommend using the PLR wiring harness option. This eliminates the need to open the fixture.

Damage to the LEDs caused during installation will not be covered under the warranty.

**LISTINGS** — CSA certified to US and Canadian safety standards. For use in damp locations between -4°F (-20°C) and 104°F (40°C). Optional High Ambient (HA) ranging to 122°F (50°C) available on certain lumen packages (See ambient temperature chart for additional information).

DesignLights Consortium® (DLC) Premium qualified product and DLC qualified product. Not all versions of this product may be DLC Premium qualified or DLC qualified. Please check the DLC Qualified Products List at [www.designlights.org/QPL](http://www.designlights.org/QPL) to confirm which versions are qualified.

**WARRANTY** — 5-year limited warranty. Complete warranty terms located at:

[www.acuitybrands.com/support/customer-support/terms-and-conditions](http://www.acuitybrands.com/support/customer-support/terms-and-conditions)

**Note:** Actual performance may differ as a result of end-user environment and application.

All values are design or typical values, measured under laboratory conditions at 25°C.

Specifications subject to change without notice.

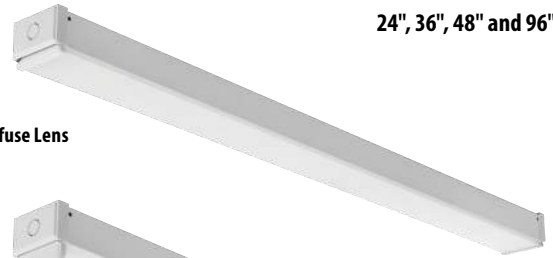
|                |
|----------------|
| Catalog Number |
| Notes          |
| Type           |

LED Linear

# CLX

24", 36", 48" and 96" Lengths

Flat Diffuse Lens



Round Diffuse Lens



Wide Diffuse Lens



### Stock configurations are offered for shorter lead times:

| Stock Part Number                               | UPC            | DLC QPL Product ID | DLC Premium |
|---|----------------|--------------------|-------------|
| CLX L48 3000LM SEF FDL MVOLT GZ10 40K 80CRI WH  | 00191723525816 | PJANKZR4           | Yes         |
| CLX L48 3000LM SEF FDL MVOLT GZ10 50K 80CRI WH  | 00191723525885 | PKW32VKL           | Yes         |
| CLX L48 5000LM SEF FDL MVOLT GZ10 40K 80CRI WH  | 00191723525939 | P77I8Z20           | Yes         |
| CLX L48 5000LM SEF FDL MVOLT GZ10 50K 80CRI WH  | 00191723525908 | P8A42C1H           | Yes         |
| CLX L96 6000LM SEF FDL MVOLT GZ10 40K 80CRI WH  | 00191723525861 | PPFTGRBV           | Yes         |
| CLX L96 6000LM SEF FDL MVOLT GZ10 50K 80CRI WH  | 00191723525915 | PW6250TE           | Yes         |
| CLX L96 10000LM SEF FDL MVOLT GZ10 40K 80CRI WH | 00191723525922 | PYKOC7EW           | Yes         |
| CLX L96 10000LM SEF FDL MVOLT GZ10 50K 80CRI WH | 00191723525830 | PKYPL35K           | Yes         |
| CLX L48 3000LM SEF RDL MVOLT GZ10 40K 80CRI WH  | 00191723525960 | PJANKZR4           | Yes         |
| CLX L48 3000LM SEF RDL MVOLT GZ10 50K 80CRI WH  | 00191723525892 | PKW32VKL           | Yes         |
| CLX L48 5000LM SEF RDL MVOLT GZ10 40K 80CRI WH  | 00191723525854 | P77I8Z20           | Yes         |
| CLX L48 5000LM SEF RDL MVOLT GZ10 50K 80CRI WH  | 00191723525946 | P8A42C1H           | Yes         |
| CLX L96 6000LM SEF RDL MVOLT GZ10 40K 80CRI WH  | 00191723525878 | PPFTGRBV           | Yes         |
| CLX L96 6000LM SEF RDL MVOLT GZ10 50K 80CRI WH  | 00191723525823 | PD0SSIAD           | Yes         |
| CLX L96 10000LM SEF RDL MVOLT GZ10 40K 80CRI WH | 00191723525953 | PYKOC7EW           | Yes         |
| CLX L96 10000LM SEF RDL MVOLT GZ10 50K 80CRI WH | 00191723525847 | PKYPL35K           | Yes         |

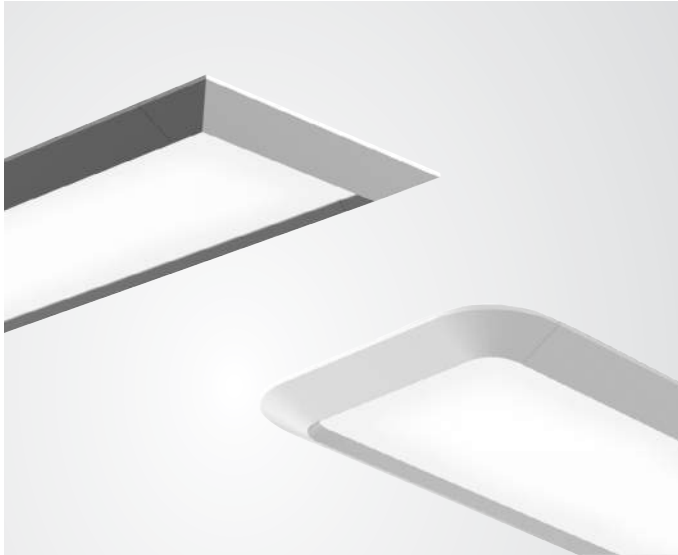
### A+ Capable Luminaire

This item is an A+ capable luminaire, which has been designed and tested to provide consistent color appearance and out-of-the-box control compatibility with simple commissioning.

- All configurations of this luminaire meet the Acuity Brands' specification for chromatic consistency
- This luminaire is part of an A+ Certified solution for nLight® or XPoint™ Wireless control networks marked by a [shaded background](#)\*

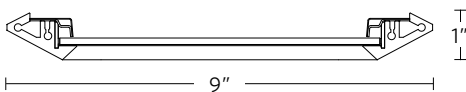
To learn more about A+, visit [www.acuitybrands.com/aplus](http://www.acuitybrands.com/aplus).

\*See ordering tree for details

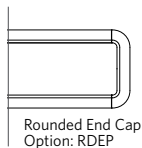
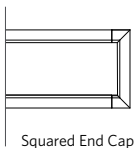


## DIMENSIONS

### □ VMM9



## DETAILS



## COMPANION LUMINAIRE(S)



## CUSTOMIZATION

Ask us about the following possibilities: Alternate section lengths, alternate distributions, alternate voltages, additional mounting options, custom colors, higher CRI and R9 values and other modifications.

## HIGHLIGHTS

- Total System Integration features 5-year limited warranty by Acuity Brands covering all components and construction
- 4 and 8' sections
- Up to 106 lm/W
- Three distributions available: (see page 2)
- High performance batwing distribution using light technology guide
- Softshine®-engineered comfort optics
- Flicker-free dimming to dark (0.1%) powered by eldoLED® driver
- Integrated nLight® control module for system networking (optional)
- Integrated sensor for daylight dimming and/or occupancy detection (optional)
- Squared or rounded end caps
- White, black, painted aluminum or custom color



## LUMEN PACKAGES

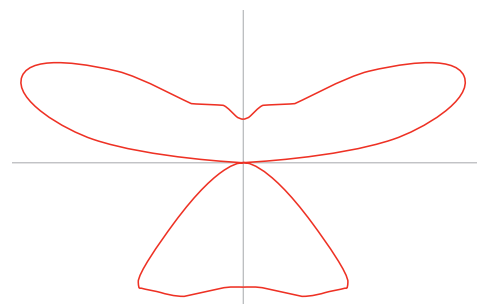
Based on 3500K. Additional color temperatures available.

| Indirect /Direct LED Output | ID1100LMF | ID1350LMF |
|-----------------------------|-----------|-----------|
| Delivered Lumens Per Foot   | 1095      | 1370      |
| Input Watts Per Foot        | 9.5       | 12.8      |
| Lumens Per Watt             | 115       | 106       |

\*per 4' section

## STANDARD DISTRIBUTION

60% Up | 40% Down



|                |
|----------------|
| Catalog Number |
| Notes          |
| Type           |

## FEATURES & SPECIFICATIONS

**INTENDED USE** — Provides a minimum of 90 minutes illumination for the rated wattage upon loss of AC power to meet and exceed code required emergency lighting. Ideal for applications requiring attractive LED unit equipment with quick installation and unparalleled performance for mounting heights from 7.5' to 30'.

**Certain airborne contaminants can diminish the integrity of acrylic and/or polycarbonate.**

[Click here for Acrylic-Polycarbonate Compatibility table for suitable uses.](#)

**CONSTRUCTION** — The housing is a standard white (black optional) thermoplastic with a compact and low-profile contemporary design. It is SVA flame rated, impact-resistant, scratch-resistant and corrosion proof. The UV-stable resin resists discoloration from natural and man-made light sources. There is a low-profile, integrated and back-lit test switch with an easily visible multi-color LED status indicator. The back-plate contains a universal j-box mounting pattern to facilitate ease of installation on a wide variety of j-boxes and the front housing allows tool-less access for ease of maintenance.

The lamp heads have a unique track-and-swivel arrangement permitting full range of direction of optical aiming.

**OPTICS** — The ELM4L features two high-performance LEDs rated at 3.3 watts per lamp head and delivers a total of 640 lumens in a spot pattern (SP640L).

The ELM6L features three high-performance LEDs rated at 5.3 watts per lamp head and delivers a total of 1,100 lumens in a spot pattern (SP1100L).

The typical life of an LED is 10 years. The LED light sources typically never need to be replaced under normal conditions for normal off applications.

CCT: 5000K

**ELECTRICAL** — Orderable in multiple voltages (see ordering tree for specific voltages.)

Current-limiting charger maximizes battery life and minimizes energy consumption to provide low operating costs. Small battery chargers Certified in the CA Title 20 Appliance Efficiency Database.

Short-circuit protection — current-limiting charger circuitry protects printed circuit board from shorts.

Regulated charge voltage maintains a stable charge voltage over a wide range of line voltages.

Prevents over/undercharging that shortens battery life and reduces capacity. Filtered charger input minimizes charge voltage ripple and extends battery life.

**BATTERY:** Sealed, maintenance-free nickel-cadmium (ELM4L only) or Lithium Iron Phosphate battery. Optional High-Output (HO option) and Extra High Output (EHO option), LTP battery type only, provides a wide variety of remote capacities and/or extended run-times.

### SELF-DIAGNOSTICS and REMOTE TEST (SDRT option):

Automatic 24-hour recharge after a 90-minute discharge.

Advanced electrical design provides constant light output throughout the entire discharge period.

Brownout protection is automatically switched to emergency mode when supply voltage drops below approximately 80 percent nominal of 120, 220, 277 or 347. Other input voltages may vary.

AC/LVD reset allows battery connection before AC power is applied and prevents battery damage from deep discharge.

Self-Diagnostics: Continuously monitors AC functionality. Test switch and remote tester (RTKIT accessory) provide manual activation of 30-second diagnostic testing for on-demand visual inspection. Standard derangement monitoring will indicate disconnected battery, charger failure and displays green flashing indicator light while in emergency mode. Single multi-chromatic LED indicator to display two-state charging, test activation and three-state self-diagnostics.

Self-diagnostic testing: Five minutes every 30 days and 90 minutes annually. Diagnostic evaluation of lamps, AC to DC transfer, battery charging and condition of microprocessor. Automatic test is easily postponed for eight hours by activating manual test switch or use of remote tester (RTKIT accessory).

**INSTALLATION** — Wall and ceiling mount standard. Blind-mate connector ensures easy installation and safe maintenance. 7/8" entrance provision at top of unit for standard 1/2" conduit entry. Tool-less removal of front cover from back-plate for ease of installation and maintenance.

**LISTINGS** — UL damp location listed standard and wet location listed when used with the WPVS accessory, all at 50-104°F (10-40°C). Meets or exceeds all applicable requirements for UL 924, NFPA 101 (current Life Safety code), NFPA 70 (NEC), NOM (Norma Oficial Mexicana), California Energy Commission Title 20 section 1605.3 (W)(4), FCC Title 47, Part 15, Subpart B and OSHA. List and labeled to comply with Canadian Standards C22.2 No. 141-10.

**WARRANTY** — 5-year limited warranty. Complete warranty terms located at:

[www.acuitybrands.com/support/customer-support/terms-and-conditions](http://www.acuitybrands.com/support/customer-support/terms-and-conditions)

**NOTE:** Actual performance may differ as a result of end-user environment and application.

All values are design or typical values, measured under laboratory conditions at 25 °C.

Specifications subject to change without notice.

† Small Battery Chargers Certified in the CA Title 20 Appliance Efficiency Database.



Contemporary Commercial LED Emergency Light



**ELM4L**  
640 Lumens

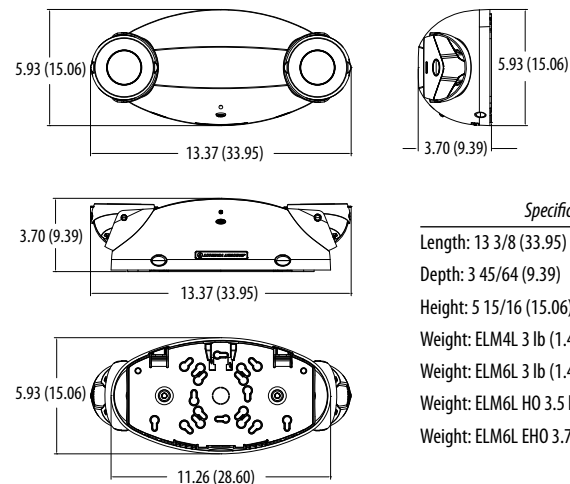
**ELM6L**  
1100 Lumens

**LITHIUM IRON PHOSPHATE  
NICKEL CADMIUM**



## MOUNTING

All dimensions are inches (centimeters) unless otherwise indicated.



### Specifications

Length: 13 3/8 (33.95)

Depth: 3 45/64 (9.39)

Height: 5 15/16 (15.06)

Weight: ELM4L 3 lb (1.4kg)

Weight: ELM6L 3 lb (1.4kg)

Weight: ELM6L HO 3.5 lbs (1.59 kg)

Weight: ELM6L EHO 3.75 lbs (1.7 kg)



## FEATURES & SPECIFICATIONS

**INTENDED USE** — Ideal for applications requiring attractive, quick-installation exit signs and low energy consumption.

**CONSTRUCTION** — Engineering-grade thermoplastic housing is impact-resistant, scratch-resistant, and corrosion-proof. UL94V-0 flame rating. UV-stable resin resists discoloration from natural and man-made light sources.

Rugged unibody housing snaps together with no additional mechanical fasteners. Faceplate and back cover are interchangeable on housing. Positive snap-fit tabs hold faceplate securely, yet easily removable for lamp compartment access.

Universal directional Chevron inserts are easily removed and reinserted. Uniform illumination without shadows or hot spots. Reinforced, impact-resistant color panels. Letters 6" high with 3/4" stroke, with 100 ft. viewing distance rating, based upon UL924 standards.

**U.S. Patent No. 5,526,251; 5,611,163; 5,739,639; 5,954,423; 5,988,825; 6,152,581; D383,501; D495,751 and 6,502,044. Other patents pending.**

**OPTICS** — LEDs mounted on printed circuit boards. Low energy consumption — less than one watt. LED lamp operates in normal (AC input) and emergency (DC input) modes.

The typical life of the exit LED lamp is 10 years.

**ELECTRICAL** — Dual voltage input capability (120/277V) and 120V through 277V for MVOLT with SD.

Low-voltage disconnect prevents excessively deep discharge that can permanently damage battery. Conveniently located test switch and LED provide visual and manual means of monitoring system.

Constant-current series charger minimizes energy consumption and provides low operating costs. Printed circuit boards are 100% quality tested during manufacturing. Current-limiting charger circuitry protects printed circuit boards from shorts.

AC/LV reset (line latch) allows battery connection before AC power is applied and aids in preventing battery damage from deep discharge.

Crystal oscillator timing system with watchdog protection for precision accuracy.

Brownout protection is automatically switched to emergency mode when supply voltage drops below 80% of nominal.

Battery: Sealed, maintenance-free nickel-cadmium battery delivers 90-minutes capacity to emergency lamps. Two-state constant-current charge maximizes battery life and automatically recharges after battery discharge.

Diagnostics: Single-point microcomputer control for all electronic features.

Single multi-chromatic LED indicator to display two-state charging, test activation and three-state diagnostic status.

Test switch provides manual activation of 30-second diagnostic testing for on-demand visual inspection. Self-diagnostic testing for five minutes every 30 days and 90 minutes every six months.

Diagnostic evaluation of LED light source, AC to DC transfer, charging and battery condition. Continuously monitors AC functionality.

**INSTALLATION** — Universal (top-, end-, or back-) mounting. Easily removed mounting knockouts. J-box pattern on back panel. Housing snaps to canopy with four positive-locking tabs. Cam-locking pin tightly secures housing to canopy.

Ships standard with additional face plate.

**LISTINGS** — UL damp location listed 50°-104°F (10°-40°C) standard. NOM Certified (see options). Meets UL924, NFPA 101 (current Life Safety Code), NEC and OSHA illumination standards. Meets all applicable FCC Title 47, Part 15, Subpart B requirements.

|                |
|----------------|
| Catalog Number |
| Notes          |
| Type           |



Thermoplastic Exits

**LQM**

LED LAMPS



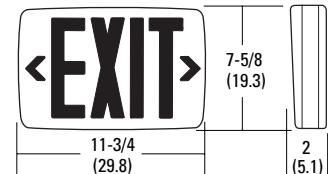
### Specifications

Length: 11-3/4 (29.8)

Depth: 2 (5.1)

Height: 7-5/8 (19.3)

Weight: 2.6 lbs (1.2 kgs)



All dimensions are inches (centimeters) unless otherwise specified.

**WARRANTY** — 5-year limited warranty. (Battery is prorated.) Complete warranty terms located at: [www.acuitybrands.com/support/customer-support/terms-and-conditions](http://www.acuitybrands.com/support/customer-support/terms-and-conditions)

**Note:** Actual performance may differ as a result of end-user environment and application. All values are design or typical values, measured under laboratory conditions at 25 °C. Specifications subject to change without notice.

† Exit Signs Certified in the CA Title 20 Appliance Efficiency Database.



### ORDERING INFORMATION

For shortest lead times, configure product using **bolded options**.

**Example:** LQM SW 3 R 120/277 EL N

**Example:** LQM SW 3 R MVOLT EL N SD

| LQM              |           |  |   |                                |  |   |  |
|------------------|-----------|--|---|--------------------------------|--|---|--|
| Family           | Face type | Housing color                          | Number of faces   | Letter color                   | Input voltage  | Operation   | Options  |
| LQM <sup>1</sup> | S Stencil | <b>(blank)</b> Black<br><b>W</b> White | <b>3</b> Single face with extra faceplate and color panel | <b>R</b> Red<br><b>G</b> Green | <b>120/277</b> Dual voltage<br><b>MVOLT</b> Multi volt 120-277, 50/60hz <sup>2</sup> | <b>(blank)</b> AC only<br><b>X2</b> Primary and secondary AC inputs provided <sup>3</sup><br><b>EL N</b> Nickel cadmium battery | <b>(blank)</b> None<br><b>NOM</b> NOM certified for Mexico <sup>4</sup><br><b>SD</b> Self-diagnostics <sup>5</sup> |

| Accessories: Order as separate item. |                                   |             |                                  |
|--------------------------------------|-----------------------------------|-------------|----------------------------------|
| ELA WG1                              | Back-mount wireguard <sup>6</sup> | ELA WGEXE   | End-mount wireguard <sup>7</sup> |
| ELA WGEXT                            | Top-mount wireguard <sup>6</sup>  | ELA LQMUS12 | 12" stem kit <sup>8</sup>        |

### Notes

- LQM available with Custom Signage. See spec sheet, [Custom Signage](#).
- Only available with EL N SD. See Example for ordering.
- Not available with other options. Both circuits can be energized at the same time.
- Available with stencil face and white housing only. Not available with MVOLT EL N SD configuration.
- Only available with MVOLT and EL N operation. See Example for ordering.
- See spec sheet [ELA-WG](#).
- See spec sheet [ELA-Stemkits](#).

## FEATURES & SPECIFICATIONS

**INTENDED USE** — Suitable for applications requiring both exit sign and unit equipment. Attractive, 8" tall, streamlined design is great for above-the-door applications and other tight fits. Optional high-output version with remote lamps are ideal for emergency egress lighting. **Certain airborne contaminants can diminish integrity of acrylic and/or polycarbonate.** [Click here for Acrylic- Polycarbonate Compatibility table for suitable uses.](#)

**CONSTRUCTION** — Engineering-grade thermoplastic housing is impact-resistant, scratch-resistant and corrosion-proof. UL94V-0 flame rating. UV-stable resin resists discoloration from natural and man-made light sources.

Rugged unibody housing snaps together with no additional fasteners. Faceplate and back cover are interchangeable on housing. Positive snap-fit tabs hold faceplate securely, yet are easily removable for lamp compartment access. Universal, directional chevron inserts are easily removed and reinserted.

Uniform graphics illumination without shadows or hot spots. Letters are 6" high with 3/4" stroke, with 100 ft. viewing distance rating based upon UL924 standard.

LEDs mounted on primary circuit boards for sign illumination. Low-energy LED lamp in sign operates in normal (AC input) and emergency (DC input) modes.

Low-profile, integrated test switch/pilot light. Easily viewed bright red status indicator.

Unique track-and-swivel arrangement permits full range of direction of lamp head adjustment. Universal J-box mounting pattern. Tool-less access for maintenance. Conduit entry position on top of unit.

**U.S. Patent No. 6,848,798; 6,499,866; 6,142,648; 5,797,673; D379,373; 5,526,251; D484,272; D473,672; 5,611,163; 5,646,502.**

**OPTICS** — Twin LED lamp heads operate in emergency (DC input) mode with 12 series-parallel white LEDs in each head. Provides redundant light sources to ensure emergency lighting performance. The typical life of the exit LED lamp is 10 years.

**ELECTRICAL** — Dual-voltage input capability (120/277V). Edge connector on printed circuit board ensures long-term durability.

Current-limiting charger maximizes battery life and minimizes energy consumption. Provides low operating costs.

Short-circuit protection — current-limiting charger circuitry protects printed circuit board from shorts.

Thermal compensation adjusts charger output to provide optimum charge voltage relative to ambient temperature.

Regulated charge voltage maintains constant-charge voltage over a wide range of line voltages. Prevents over/undercharging that shortens battery life and reduces capacity.

Filtered charger input minimizes charge voltage ripple and extends battery life.

AC/LVD reset allows battery connection before AC power is applied and prevents battery damage from deep discharge.

Single multi-color LED indicator to display two-state charging, test activation and three-state diagnostic test. Test switch provides manual activation of 30-second diagnostic testing for on-demand visual inspection. Self-diagnostic testing for 30 seconds every 30 days, 30 minutes at 180-day interval, and 90 minutes annually. Diagnostic evaluation of LED light source, AC-to-DC transfer, charging and battery condition.



Looking for Contractor Select readily available configurations? Click here to visit Contractor Select™ spec sheet or go to [www.contractorselect.com](http://www.contractorselect.com)

|                |
|----------------|
| Catalog Number |
| Notes          |
| Type           |



**QUANTUM®**  
Thermoplastic Exits

# LHQM LED

LED Lamp Head  
Nickel-Cadmium Battery



HO RO



Battery: Sealed, maintenance-free nickel-cadmium battery delivers 90-minute capacity to emergency lamps. Two-state constant-current charge maximizes battery life and automatically recharges after battery discharge. Low-voltage disconnect prevents excessively deep discharge that can permanently damage the battery. Optional high-output battery to power both local and optional LED remote lamp heads simultaneously.

**INSTALLATION** — Top, end or back mounting. Housing snaps to canopy with positive-locking tabs. Cam locking pin secures housing to canopy.

Easily removed mounting knockouts. Conduit entry knockout for 1/2" flexible conduit. J-box pattern on back panel.

**LISTINGS** — UL damp location listed standard 50°-104°F (10°-40°C). Meets UL 924, NFPA 101 (current Life Safety Code), NEC and OSHA illumination standards.

**WARRANTY** — 5-year limited warranty. (Battery is prorated). Complete warranty terms located at [www.AcuityBrands.com/CustomerResources/Terms\\_and\\_Conditions.aspx](http://www.AcuityBrands.com/CustomerResources/Terms_and_Conditions.aspx).

**Note:** Actual performance may differ as a result of end-user environment and application.

All values are design or typical values, measured under laboratory conditions at 25 °C.

Specifications subject to change without notice.

### ORDERING INFORMATION

Lead times will vary depending on options selected. Consult with your sales representative.

**Example: LHQM LED G**

| LHQM   | LED                         |                          |                  |   |   |  |  |  |  |
|--|-----------------------------|--------------------------|------------------|---|---|--|--|--|--|
| Family   | Lamp type                   | Housing color            | Letter color     | Options   |   |  |  |  |  |
| LHQM Stencil face, single face plate with extra face plate | LED Two 1.5W/9.6V white LED | (blank) White<br>B Black | R Red<br>G Green | HO High-output Ni-cad battery<br>HO RO High-output option, less lamp heads<br>SD Self-diagnostics | NOM Meets Mexican standards¹<br>NOM SALIDA Salida signage (non-UL)² |  |  |  |  |

| Accessories: Order as separate catalog number. |  |                      |  |  |
|--|--|----------------------|--|--|
| ELA Q L0309 SD                                 | Single, LED indoor remote head, white, self-diagnostics <sup>3,4,5</sup>       | ELA WG3              | Wireguard, 30" W x 13-1/2" H x 6" D <sup>6</sup>   |  |
| ELA T Q L0309 SD                               | Twin, LED indoor remote head, white, self-diagnostics <sup>3,4,5</sup>         | ELA WG2M             | Wireguard, 21-1/4" W x 15" H x 12" D <sup>6</sup>  |  |
| ELA QWP L0309 SD                               | Single, LED weather-proof remote head, gray, self-diagnostics <sup>3,4,5</sup> | ELA LQMUS12          | 12" white stem kit <sup>7</sup>  |  |
| ELA T QWP L0309 SD                             | Twin, LED weather-proof remote head, gray, self-diagnostics <sup>3,4,5</sup>   | ERE W SGL SQ M12     | Single, LED indoor remote head, square, ivory white, .75W, 3.6V-12V voltage sensing <sup>8,9</sup> |  |
| ELA Q L0309                                    | Single, LED indoor remote head, white <sup>4,5</sup>                           | ERE W T SQ M12       | Twin, LED indoor remote head, square, ivory white, 1.5W, 3.6V-12V voltage sensing <sup>8,9</sup>   |  |
| ELA T Q L0309                                  | Twin, LED indoor remote head, white <sup>4,5</sup>                             | ERE GY SGL WP SQ M12 | Single, LED weather-proof remote head, square, gray, 1W, 3.6V-12V voltage sensing <sup>8,9</sup>   |  |
| ELA QWP L0309                                  | Single, LED weather-proof remote head, gray <sup>4,5</sup>                     | ERE GY T WP SQ M12   | Twin, LED weather-proof remote head, square, gray, 2W, 3.6V-12V voltage sensing <sup>8,9</sup>     |  |
| ELA T QWP L0309                                | Twin, LED weather-proof remote head, gray <sup>4,5</sup>                       |                      |  |  |

#### Notes

- Available in black or white. Consult factory for options.
- Only available in white. NOM standard.
- Only compatible with self-diagnostic option. (ex: HO SD)
- Also available in black. Add "B" after ELA to order black finish. Example: ELA B Q L0309.
- Only compatible with HO option. See spec sheet [ELA-Q-LED](#).
- See spec sheet [ELA-WG](#).
- See spec sheet [ELA-Stemkits](#).
- See spec sheet [ERE](#).
- Not available with SD. Only compatible with HO option.

|                |
|----------------|
| Catalog Number |
| Notes          |
| Type           |

## FEATURES & SPECIFICATIONS

**INTENDED USE** — Vandal-resistant, damp location LED troffer for general illumination of potentially physically abusive public spaces and environments such as locker rooms, recreational facilities, schools, supervised behavioral centers and other vandal prone areas

**Certain airborne contaminants may adversely affect the functioning of LEDs and other electronic components, depending on various factors such as concentrations of the contaminants, ventilation, and temperature at the end-user location. [Click here for a list of substances that may not be suitable for interaction with LEDs and other electronic components.](#)**

**CONSTRUCTION** — The 20-gauge cold rolled steel housing, 18-gauge cold rolled steel door frame, tamper-resistant fasteners and polycarbonate lens stand-up to abuse. Swing-arms are 18 gauge, unpainted galvanized steel. Polycarbonate lens is UV stabilized and is available in two different thicknesses to meet demanding requirements. Number of visible door fasteners may vary. Tamper-resistant fasteners are TX15 security-type Torx® fasteners requiring a special tool or bit for access. Tool and bit are not included with fixture.

**Finish:** All CRS (cold rolled steel) parts are finished with electrostatically deposited, thermally set, polyester powder paint after fabrication.

**OPTICS** — Long-life LEDs, coupled with high-efficiency drivers, provide extended service life. Lumen maintenance of L80/60,000 hours, L70>100,000 hours.

**ELECTRICAL** — Thermally protected, resetting, Class P, HPF, non-PCB, UL listed, CSA certified driver is standard. LED driver delivers dimming from a 0-10V control signal. Dims to 1% standard.

**Luminaire Surge Protection Level:** Designed to withstand up to 6kV/3kA per ANSI C82.77-5-2015

**INSTALLATION** — Lay-in grid or in-ceiling sheet rock installation using swing-arms with range from 1" to 2" grid height. See drawings for other critical dimensions. Swing-arms are not intended to secure fixture without additional support. The VRTL utilizes tamper-resistant fasteners to prevent unauthorized access to luminaire. **A TX15 Security Torx Screwdriver or TX15 Security Torx® Bit is required** to remove the door and access the internal luminaire components for installation or service. The TX15 Security Torx® Screwdriver or bit is NOT SUPPLIED with fixture.

**LISTINGS** — CSA certified to meet U.S. and Canadian standards (UL1598 and UL8750) or NOM certified. IC rated, see footnote 5 for non-compliant configurations. Damp location listed standard.

Ambient temperature range is -4°F (-20°C) to 77°F (25°C). For use in ambient temperatures ranging from -4°F (-20°C) to 104°F (40°C) with the exception of 10000LM(1X4), 12000LM(2X2) and 20000LM(2X4). These lumen packages are for use in ambient temperatures ranging from -4°F (-20°C) to 77°F (25°C).

**WARRANTY** — 5-year limited warranty. Complete warranty terms located at:

[www.acuitybrands.com/support/customer-support/terms-and-conditions](http://www.acuitybrands.com/support/customer-support/terms-and-conditions)

**Note:** Actual performance may differ as a result of end-user environment and application.

All values are design or typical values, measured under laboratory conditions at 25 °C.

Specifications subject to change without notice.

### LED Recessed Vandal Resistant Troffer

# VRTL



(images with WL option)



## A+ Capable Luminaire

This item is an A+ capable luminaire, which has been designed and tested to provide consistent color appearance and out-of-the-box control compatibility with simple commissioning.

- All configurations of this luminaire meet the Acuity Brands' specification for chromatic consistency
- This luminaire is part of an A+ Certified solution for nLight® or XPoint™ Wireless control networks marked by a [shaded background\\*](#)

To learn more about A+, visit [www.acuitybrands.com/aplus](http://www.acuitybrands.com/aplus).

\*See ordering tree for details



## FEATURES & SPECIFICATIONS

**INTENDED USE** — Vandal-resistant, damp location LED troffer for general illumination of potentially physically abusive public spaces and environments such as locker rooms, recreational facilities, schools, supervised behavioral centers and other vandal prone areas

**Certain airborne contaminants may adversely affect the functioning of LEDs and other electronic components, depending on various factors such as concentrations of the contaminants, ventilation, and temperature at the end-user location. [Click here for a list of substances that may not be suitable for interaction with LEDs and other electronic components.](#)**

**CONSTRUCTION** — The 20-gauge cold rolled steel housing, 18-gauge cold rolled steel door frame, tamper-resistant fasteners and polycarbonate lens stand-up to abuse. Swing-arms are 18 gauge, unpainted galvanized steel. Polycarbonate lens is UV stabilized and is available in two different thicknesses to meet demanding requirements. Number of visible door fasteners may vary. Tamper-resistant fasteners are TX15 security-type Torx® fasteners requiring a special tool or bit for access. Tool and bit are not included with fixture.

**Finish:** All CRS (cold rolled steel) parts are finished with electrostatically deposited, thermally set, polyester powder paint after fabrication.

**OPTICS** — Long-life LEDs, coupled with high-efficiency drivers, provide extended service life. Lumen maintenance of L80/60,000 hours, L70>100,000 hours.

**ELECTRICAL** — Thermally protected, resetting, Class P, HPF, non-PCB, UL listed, CSA certified driver is standard. LED driver delivers dimming from a 0-10V control signal. Dims to 1% standard.

**Luminaire Surge Protection Level:** Designed to withstand up to 6kV/3kA per ANSI C82.77-5-2015

**INSTALLATION** — Lay-in grid or in-ceiling sheet rock installation using swing-arms with range from 1" to 2" grid height. See drawings for other critical dimensions. Swing-arms are not intended to secure fixture without additional support. The VRTL utilizes tamper-resistant fasteners to prevent unauthorized access to luminaire. **A TX15 Security Torx Screwdriver or TX15 Security Torx® Bit is required** to remove the door and access the internal luminaire components for installation or service. The TX15 Security Torx® Screwdriver or bit is NOT SUPPLIED with fixture.

**LISTINGS** — CSA certified to meet U.S. and Canadian standards (UL1598 and UL8750) or NOM certified. IC rated, see footnote 5 for non-compliant configurations. Damp location listed standard.

Ambient temperature range is -4°F (-20°C) to 77°F (25°C). For use in ambient temperatures ranging from -4°F (-20°C) to 104°F (40°C) with the exception of 10000LM(1X4), 12000LM(2X2) and 20000LM(2X4). These lumen packages are for use in ambient temperatures ranging from -4°F (-20°C) to 77°F (25°C).

**WARRANTY** — 5-year limited warranty. Complete warranty terms located at:

[www.acuitybrands.com/support/customer-support/terms-and-conditions](http://www.acuitybrands.com/support/customer-support/terms-and-conditions)

**Note:** Actual performance may differ as a result of end-user environment and application.

All values are design or typical values, measured under laboratory conditions at 25 °C.

Specifications subject to change without notice.

|                |
|----------------|
| Catalog Number |
| Notes          |
| Type           |

### LED Recessed Vandal Resistant Troffer

# VRTL



(images with WL option)



## A+ Capable Luminaire

This item is an A+ capable luminaire, which has been designed and tested to provide consistent color appearance and out-of-the-box control compatibility with simple commissioning.

- All configurations of this luminaire meet the Acuity Brands' specification for chromatic consistency
- This luminaire is part of an A+ Certified solution for nLight® or XPoint™ Wireless control networks marked by a [shaded background\\*](#)

To learn more about A+, visit [www.acuitybrands.com/aplus](http://www.acuitybrands.com/aplus).

\*See ordering tree for details