

IMPERVIOUS AREA
EXISTING IMPERVIOUS AREA 2,190 SF / ±0.05 AC
PROPOSED IMPERVIOUS AREA 37,100 SF / ±0.85 AC
INCREASED IMPERVIOUS AREA 34,910 SF / ±0.80 AC

△ DRAINAGE STRUCTURE LEGEND

- | | | |
|----------------------------------|----------------------------------|--|
| 1 SI
GR=750.15
IE=747.65 | 2 SI
GR=749.95
IE=747.10 | 3 SI
GR=750.70
IE=746.70 |
| 4 MH
RIM=753.50
IE=746.30 | 5 SI
GR=752.50
IE=745.90 | 6 MH
RIM=746.70
IE=742.40
IE=510=741.60 |
| 7 MH
RIM=744.80
IE=741.40 | 8 HW
IE=741.25 | 9 SI
GR=750.25
IE=747.50 |
| 10 WOU
GR=745.50
IE=741.50 | 21 MH
RIM=743.10
IE=735.90 | 22 EX.CB
GR=738.49
IE=735.54 |

STRUCTURE KEY

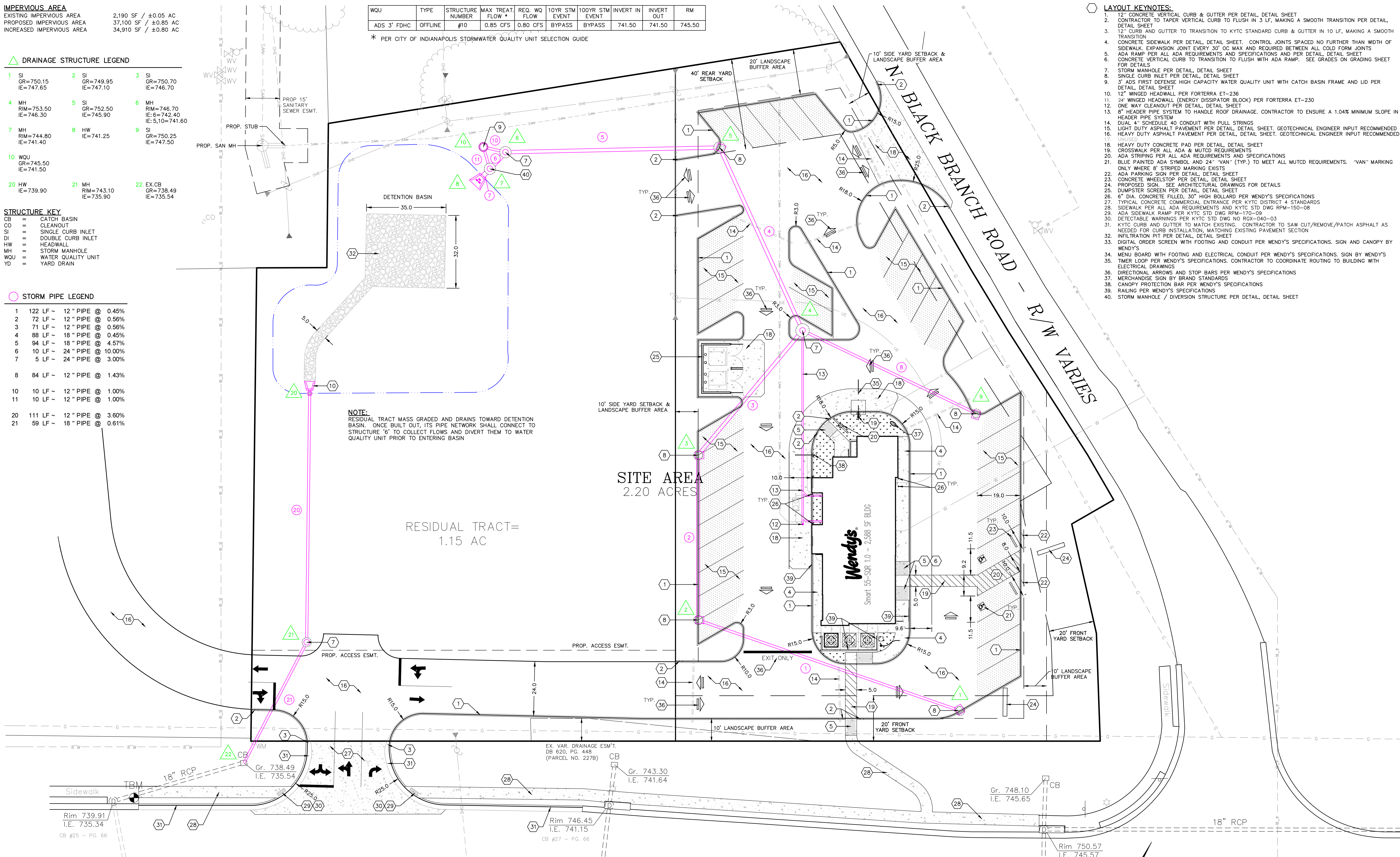
- CB = CATCH BASIN
CO = CLEANOUT
SI = SINGLE CURB INLET
DI = DOUBLE CURB INLET
HW = HEADWALL
MH = STORM MANHOLE
WOU = WATER QUALITY UNIT
YO = YARD DRAIN

○ STORM PIPE LEGEND

- | | |
|----|---------------------------|
| 1 | 122 LF ~ 12" PIPE @ 0.45% |
| 2 | 72 LF ~ 12" PIPE @ 0.56% |
| 3 | 71 LF ~ 12" PIPE @ 0.56% |
| 4 | 88 LF ~ 18" PIPE @ 0.45% |
| 5 | 94 LF ~ 18" PIPE @ 4.57% |
| 6 | 10 LF ~ 24" PIPE @ 10.00% |
| 7 | 5 LF ~ 24" PIPE @ 3.00% |
| 8 | 84 LF ~ 12" PIPE @ 1.43% |
| 10 | 10 LF ~ 12" PIPE @ 1.00% |
| 11 | 10 LF ~ 12" PIPE @ 1.00% |
| 20 | 111 LF ~ 12" PIPE @ 3.60% |
| 21 | 59 LF ~ 18" PIPE @ 0.61% |

WQU	TYPE	STRUCTURE NUMBER	MAX TREAT FLOW *	REQ. WQ FLOW	10YR STM EVENT	100YR STM EVENT	INVERT IN	INVERT OUT	RM
ADS 3' FDHC	OFFLINE	#10	0.85 CFS	0.80 CFS	BYPASS	BYPASS	741.50	741.50	745.50

* PER CITY OF INDIANAPOLIS STORMWATER QUALITY UNIT SELECTION GUIDE



LAYOUT KEYNOTES:

- 12" CONCRETE VERTICAL CURB & GUTTER PER DETAIL, DETAIL SHEET
- CONTRACTOR TO TAPER VERTICAL CURB TO FLUSH IN 3 LF, MAKING A SMOOTH TRANSITION PER DETAIL, DETAIL SHEET
- 12" CURB AND GUTTER TO TRANSITION TO KYTC STANDARD CURB & GUTTER IN 10 LF, MAKING A SMOOTH TRANSITION
- CONCRETE SIDEWALK PER DETAIL, DETAIL SHEET. CONTROL JOINTS SPACED NO FURTHER THAN WIDTH OF SIDEWALK. EXPANSION JOINT EVERY 30' OC MAX AND REQUIRED BETWEEN ALL COLD FORM JOINTS
- ADA RAMP PER ALL ADA REQUIREMENTS AND SPECIFICATIONS AND PER DETAIL, DETAIL SHEET
- CONCRETE VERTICAL CURB TO TRANSITION TO FLUSH WITH ADA RAMP. SEE GRADES ON GRADING SHEET FOR DETAILS
- STORM MANHOLE PER DETAIL, DETAIL SHEET
- SINGLE CURB INLET PER DETAIL, DETAIL SHEET
- 3' ADS FIRST DEFENSE HIGH CAPACITY WATER QUALITY UNIT WITH CATCH BASIN FRAME AND LID PER DETAIL, DETAIL SHEET
- 12" WINGED HEADWALL PER FORTERRA ET-236
- 24" WINGED HEADWALL (ENERGY DISSIPATOR BLOCK) PER FORTERRA ET-230
- ONE WAY CLEANOUT PER DETAIL, DETAIL SHEET
- 8" HEADER PIPE SYSTEM TO HANDLE ROOF DRAINAGE. CONTRACTOR TO ENSURE A 1.04% MINIMUM SLOPE IN HEADER PIPE SYSTEM
- DUAL 4" SCHEDULE 40 CONDUIT WITH PULL STRINGS
- LIGHT DUTY ASPHALT PAVEMENT PER DETAIL, DETAIL SHEET. GEOTECHNICAL ENGINEER INPUT RECOMMENDED
- HEAVY DUTY ASPHALT PAVEMENT PER DETAIL, DETAIL SHEET. GEOTECHNICAL ENGINEER INPUT RECOMMENDED
- HEAVY DUTY CONCRETE PAD PER DETAIL, DETAIL SHEET
- CROSSWALK PER ALL ADA & MUTCD REQUIREMENTS
- ADA STRIPING PER ALL ADA REQUIREMENTS AND SPECIFICATIONS
- BLUE PAINTED ADA SYMBOL AND 24" "VAN" (TYP.) TO MEET ALL MUTCD REQUIREMENTS. "VAN" MARKING ONLY WHERE 6" STRIPED MARKING EXISTS
- ADA PARKING SIGN PER DETAIL, DETAIL SHEET
- CONCRETE WHEELSTOP PER DETAIL, DETAIL SHEET
- PROPOSED SIGN. SEE ARCHITECTURAL DRAWINGS FOR DETAILS
- DUMPSTER SCREEN PER DETAIL, DETAIL SHEET
- 6" DIA. CONCRETE FILLED, 30" HIGH BOLLARD PER WENDY'S SPECIFICATIONS
- TYPICAL CONCRETE COMMERCIAL ENTRANCE PER KYTC DISTRICT 4 STANDARDS
- SIDEWALK PER ALL ADA REQUIREMENTS AND KYTC STD DWG RPM-150-08
- ADA SIDEWALK RAMP PER KYTC STD DWG RPM-170-09
- DETECTABLE WARNINGS PER KYTC STD DWG NO ROK-040-03
- KYTC CURB AND GUTTER TO MATCH EXISTING. CONTRACTOR TO SAW CUT/REMOVE/PATCH ASPHALT AS NEEDED FOR CURB INSTALLATION, MATCHING EXISTING PAVEMENT SECTION
- INFILTRATION PIT PER DETAIL, DETAIL SHEET
- DIGITAL ORDER SCREEN WITH FOOTING AND CONDUIT PER WENDY'S SPECIFICATIONS. SIGN AND CANOPY BY WENDY'S
- MENU BOARD WITH FOOTING AND ELECTRICAL CONDUIT PER WENDY'S SPECIFICATIONS. SIGN BY WENDY'S
- TIMER LOOP PER WENDY'S SPECIFICATIONS. CONTRACTOR TO COORDINATE ROUTING TO BUILDING WITH ELECTRICAL DRAWINGS
- DIRECTIONAL ARROWS AND STOP BARS PER WENDY'S SPECIFICATIONS
- MERCHANDISE SIGN BY BRAND STANDARDS
- CANOPY PROTECTION BAR PER WENDY'S SPECIFICATIONS
- RAILING PER WENDY'S SPECIFICATIONS
- STORM MANHOLE / DIVERSION STRUCTURE PER DETAIL, DETAIL SHEET

LEGEND

- EX. FENCE
PROP. FENCE
EXISTING STORM SEWER, CATCH BASIN W/ INLET PROTECTION AND HEADWALL
EXISTING SEWER AND MANHOLE
EX. CONTOUR
PROPOSED STORM SEWER, CATCH BASIN W/ INLET PROTECTION AND HEADWALL
PROPOSED DITCH/SWALE
EXISTING TREE LINE
EXISTING EVERGREEN TREES TO REMAIN

GENERAL LAYOUT NOTE(S)

- LIGHTING DESIGN BY OTHERS. NO LIGHTS SHOWN ON CURRENT PLAN
- ALL DIMENSIONS ARE FROM FACE OF VERTICAL CURB UNLESS OTHERWISE NOTED. ANY PLACE WHERE DRAINAGE LEAVES A CURBLINE & 12" CURB AND GUTTER IS SPECIFIED, CONTRACTOR TO ENSURE SLOPE OF THE GUTTER MATCHES SLOPE OF ASPHALT PAVEMENT
- ALL CLEANOUTS IN THE PARKING LOT TO BE INSTALLED WITH TRAFFIC RATED CASTINGS
- UNLESS OTHERWISE NOTED, THE RADIUS OF ALL CURBS ARE 5'-0"
- PARKING SPACES ARE 9' WIDE X 18' LONG UNLESS OTHERWISE INDICATED
- ALL WALKWAY AND HANDICAP ACCESSIBILITY ROUTES TO COMPLY WITH MINIMUM REQUIREMENTS OF "2010 ADA STANDARDS FOR ACCESSIBLE DESIGN". WALKWAYS NOT TO EXCEED 5% GRADIENT ALONG PATHWAYS OR 2% CROSSWALK GRADIENT. CONTRACTOR IS RESPONSIBLE FOR REMOVAL & REPLACEMENT OF ALL CONSTRUCTED NON-COMPLIANT WALKWAYS
- EXPANSION JOINTS TO BE INSTALLED BETWEEN ALL NEW CONCRETE PAVEMENT AND EXISTING STRUCTURES, BUILDINGS, AND EXISTING CONCRETE PAVEMENTS. EXPANSION JOINTS TO BE SEALED PER DETAIL, DETAIL SHEET
- CONTRACTOR IS RESPONSIBLE FOR OBTAINING ALL NECESSARY PERMITTING PRIOR TO CONSTRUCTION

STORM NOTE(S)

ALL STORM PIPE TO BE HDPE OR RCP UNLESS OTHERWISE INDICATED ON PLANS. PIPE TO BE INSTALLED PER MANUFACTURERS RECOMMENDATIONS, USING ALL APPROPRIATE FITTINGS AND CONNECTIONS

ALL STORM PIPE IN KYTC ROW TO CONFORM TO KYTC STANDARDS. ALL STORM PIPE IN ELIZABETHTOWN EASEMENTS TO CONFORM TO ELIZABETHTOWN STANDARDS

CONTRACTOR TO VERIFY EXISTING LOCATION, DEPTH, AND CONDITION OF EXISTING STORM PIPES AND STRUCTURES PRIOR TO CONSTRUCTION

CONTRACTOR TO VERIFY CONDITION OF EXISTING STORM STRUCTURES AND PIPING PRIOR TO PAVING OR FINAL GRADE TO ENSURE PIPE WAS NOT DAMAGED DURING CONSTRUCTION

KYTC NOTES

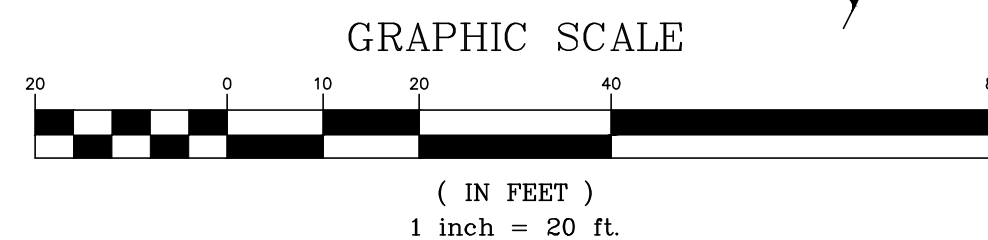
KYTC REQUIRES ALL NEW (AND EXISTING) SIDEWALKS TO HAVE NO GREATER THAN A 2% CROSS SLOPE AND 5% LONGITUDINAL SLOPE. CONTRACTOR TO CHECK EXISTING SIDEWALKS WITH A SLOPE LEVEL AND INCLUDE REPAIRS AS NECESSARY TO BRING ALL SIDEWALKS IN OR ALONG THE PROJECT BOUNDARY INTO ADA COMPLIANCE INTO THEIR BIDS.

SAWCUT NOTE

WHEN MATCHING EXISTING BITUMINOUS PAVEMENTS, A TWO (2) INCH DEPTH SAW-CUT, A MINIMUM OF TWELVE (12) INCHES FROM THE EDGE OR TO SOUND ASPHALT MATERIAL AND ROADWAY ROCK BASE AND THE ASPHALT MATERIAL PLACED TO FORM A WATERTIGHT JOINT AS DIRECTED BY METRO PUBLIC WORKS.

UTILITY NOTE(S)

ALL LOCATIONS OF UNDERGROUND UTILITIES SHOWN ON THESE PLANS ARE APPROXIMATE. CONTRACTOR TO FIELD VERIFY LOCATION OF ALL UTILITIES AND COORDINATE WITH ALL THE UTILITY COMPANIES PRIOR TO ANY CONSTRUCTION.



SITE ADDRESS:
61 N. BLACK BRANCH RD.
ELIZABETHTOWN, KY 42724



UTILITY NOTE: ALL UTILITIES SHOWN ON THESE PLANS ARE APPROXIMATE. THE INDIVIDUAL SERVICE LINES ARE NOT SHOWN. THE CONTRACTOR OR SUBCONTRACTOR SHALL NOTIFY THE UTILITY PROTECTION CENTER, "KENTUCKY 811" (TOLL FREE PHONE NO. 1-800-752-6007 OR LOCAL NO. 502-266-5123) FORTY EIGHT HOURS IN ADVANCE OF ANY CONSTRUCTION ON THIS PROJECT. THIS NUMBER WAS ESTABLISHED TO PROVIDE ACCURATE LOCATIONS OF EXISTING BELOW GROUND UTILITIES (I.E. CABLES, ELECTRIC WIRES, GAS, AND WATERLINES). WHEN CONTACTING THE "KENTUCKY 811" CALL CENTER, PLEASE STATE THAT THE WORK TO BE DONE IS FOR A PROPOSED MSD SEWER OR DRAINAGE FACILITY. THE CONTRACTOR SHALL BE RESPONSIBLE FOR BECOMING FAMILIAR WITH ALL UTILITY REQUIREMENTS SET FORTH ON THE PLANS IN THE TECHNICAL SPECIFICATIONS AND SPECIAL PROVISIONS.

WM #

PROJECT DATA

FILE NAME: 19202 - C2.0 LAY

DATE: 03/23/2021

CHECKED BY: EB

DRAWN BY: BR

SITE LAYOUT PLAN

WENDY'S
61 N. BLACK BRANCH RD.
OWNER/DEVELOPER

SRRG KENTUCKY, LLC
4201 SPRING VALLEY RD. #450
FARMERS BRANCH, TX 75244

JOB NO.
19202

SHEET
C2.0

REVISIONS

DESCRIPTION

DATE

NO.

ENGINEER'S SEAL

SURVEYOR'S SEAL