



Unlimited Learning

Summer 2021

Timeline

February

- Dr. Bacon and Mrs. Usher met with district leaders to begin work on organizing ESSER II (*CRRSA Act*) spending template specific to summer programming, special education, mental health, facilities, transportation, academics, and other areas for allowable expenditures under ESSER II
- Started planning for ESSER II level committees
- Meetings with schools began to identify students with disabilities for potential compensatory ed services based on regression data
- Meetings with FRYSCs at all levels have occurred to begin planning/blending programming for summer opportunities
- ThoughtExchange sent to all staff regarding input on summer programming

March

- ThoughtExchange will be sent to parents for input regarding summer programming
- ESSER II committees at each level (*ES, MS, HS*) will be confirmed/finalized and work will begin on planning
- At end of month, committees will have summer programming framework completed for review, revisions, and beginning implementation

Timeline

April

- Schools will begin to prioritize student needs for participation in summer programming
- Summer teacher and instructional assistant positions will be posted
- Families will be contacted for student participation in summer programming
- Level committees will continue to work on logistics related to parent sign-up, sharing of information to families through schools and district communication avenues, etc.
- Confirmation of outside agencies/community partners assisting with summer programming

May

- ESSER II Spending Plan due in GMAP for approval
- All staff will be hired for summer programming
- Final preparations of summer programming will occur

June

- Summer Programming will begin the week of June 14 and end week of July 26 (*due to June 7–8 being Professional Development Days teachers cannot be paid for working*)
- Teachers will be provided 3-hour paid, planning days on June 9th and 10th

Summer Programming: Priorities & Framework

Summer Unlimited Learning Core Ideas

Summer learning for all students

We must think about continuing the work into the 2021–2022 school year

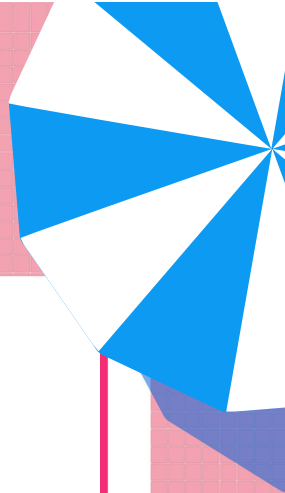
Re-engagement in the excitement of school and learning

Provide opportunities for students to explore interests, passions, careers, etc.

Social and emotional learning must be a priority

Provide students and families with school-based and mental health services

Summer Priorities (*not exhaustive*)



Mitigating Learning Loss

- Core Subjects: Reading and Math
- Priority Students
- MasteryConnect used for standards mastery
- Process to identify students who need summer support
- COVID Compensatory Services

Social Emotional

- Counseling groups
- Social Emotional lessons, activities, etc
- Parent Support w/community agencies
- SEL camps

Credit Recovery

- Grade 9 ????
- Grades 11-12
- Blend of in-person and computer-based
- Mentoring system embedded

School Re-engagement/Early Start/Advancement

- GT Learners
- Enrichment
- Early Start for Transition Years
- Art, STEAM/STEM, creativity, music, humanities, CTE camps, theater, etc.
- Life Ready activities
- Transition Camps at K, Grade 5-6, Grade 8-9

Planning Mindset

- The following slides are a “starting” point for ideas, brainstorming, etc. for summer programming
- Each level (ES, MS, HS) needs to create a more specialized framework, while also thinking about all logistics
- Depending on the level, schools may need to think about combining due to number of staff, number of students, etc.
- Levels need to identify a “system of identification” for priority students as well as providing ways to re-engage priority and **all** students with the excitement of school (*summer learning needs to be engaging, not punishment*)
- Committees need to take this slide deck and build out for each level, school, etc.
- Individuals on committee work together to get input from the stakeholder groups they represent
- Committees need to think about continuity of academic offerings and variety of other offerings with staff
- What resources/agencies have we not tapped into yet?

Summer Unlimited Learning Framework 2021

- AM Sessions
 - Academic Focus
 - Reading, Math, Writing
 - Utilize any ESS funds left from 2020–2021 school year
 - Peer Tutoring through ESS funds at HS
 - ES and MS: 15 students per teacher
 - COVID Compensatory Services
- PM Sessions
 - Social Emotional/ Mental Health
 - English Learners language development
 - Physical/Health Activity
 - STEM/STEAM, art, music, leadership, creativity, engineering, social studies, science, humanities, theater/drama, CTE camps, etc.
 - COVID Compensatory Services (behavioral, therapy, etc.)

Summer Unlimited Learning 2021

- **Teacher Work Day (AM Session)**
 - 8:00 AM–12:00 PM
 - \$30.00 an hour
 - Paid for 30–Minute Prep and additional planning time
- **Student Instructional Day (AM Session)**
 - 8:30–11:00 AM
 - Transportation will drop off and pick-up; transportation to PM session if at another site
 - Breakfast provided in AM
- **Instructional Assistants**
 - 8:00–11:30 PM
 - Assist with instruction (small groups, one-on-one, etc.); monitoring of lunch pick-up transportation, etc.

Summer Unlimited Learning 2021

- **Teacher Work Day (PM Sessions)**
 - 11:00–3:00 PM
 - \$30.00 an hour
 - Paid for 30–Minute Prep and additional planning time
- **Student Instructional Day (PM Sessions)**
 - 11:30–2:00 PM
 - Transportation will drop off and pick-up; transportation also provided from AM to PM session if AM session at another location
 - Lunch provided in PM
- **Instructional Assistants**
 - 11:00–2:00 PM
 - Assist with instruction (small groups, one-on-one, etc.); monitoring of lunch pick-up transportation, etc.

Summer Unlimited Learning “Glance at a Week”

(committees will build out for a visual with times, activity offerings, number of teachers/instructional assistants, etc.)

Budgeting Planning/Logistics Information

- Please provide information related to number of certified teachers needed, instructional assistants, resources, supplemental programming, etc.
- Please provide logistical information such as transportation times, food service times, etc.