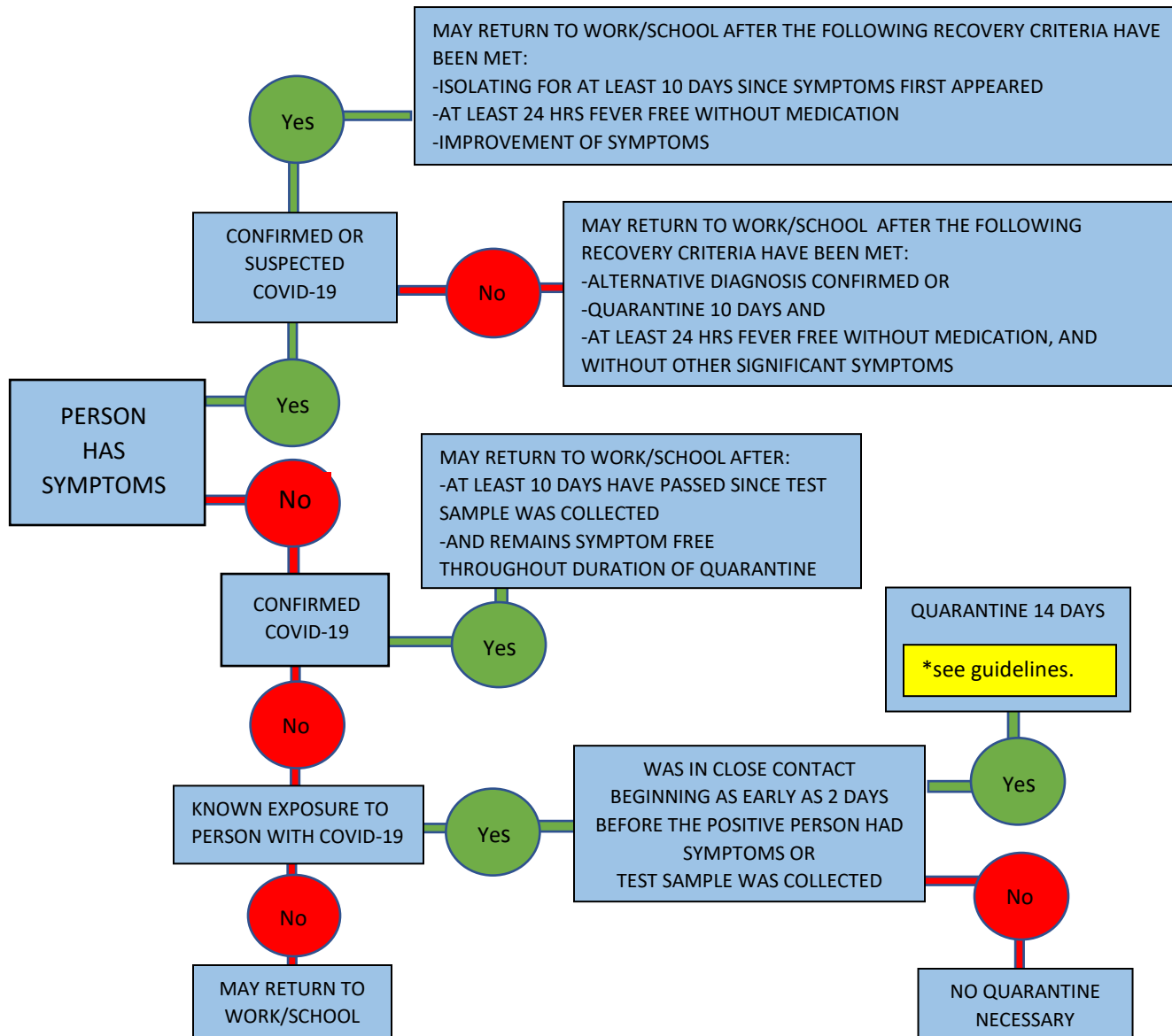


COVID-19 DECISION TREE



GUIDELINES

DAY 1 OF QUARANTINE/ISOLATION IS DEFINED AS EITHER:
 1. DATE OF EXPOSURE TO COVID POSITIVE PERSON OR
 2. DATE SYMPTOMS FIRST APPEARED OR
 3. DATE SAMPLE WAS COLLECTED THAT RESULTED IN A POSITIVE TEST.

IF A STUDENT OR STAFF LIVES IN THE SAME HOUSEHOLD AS SOMEONE DIAGNOSED WITH COVID-19, THE STUDENT OR STAFF MEMBER QUARANTINES WHILE THE HOUSEHOLD MEMBER IS RECOVERING AND FOR 14 DAYS FROM THE DAY THE HOUSEHOLD MEMBER IS CONSIDERED RECOVERED, WITH OPTIONS TO END QUARANTINE EARLY.

THERE ARE 3 DIFFERENT WAYS CLOSE CONTACTS CAN QUARANTINE AS LONG AS THEY HAVE NO SYMPTOMS:

1. QUARANTINE FOR 14 DAYS; ESPECIALLY IF THEY ARE GOING TO BE AROUND PEOPLE THAT ARE HIGH RISK FOR THE VIRUS, ELDERLY, PEOPLE WITH CO-MORBIDITIES OR THOSE WHO ARE IMMUNOCOMPROMISED.
2. QUARANTINE FOR 10 DAYS IF THEY HAVE NO SYMPTOMS.
3. QUARANTINE FOR 7 DAYS IF THEY HAVE A NEGATIVE COVID-19 TEST ON OR AFTER DAY 5 AND HAVE NO SYMPTOMS.

FOR THOSE WHO HAVE RECEIVED THE COMPLETE VACCINE SERIES AND ARE EXPOSED TO A POSITIVE COVID-19 PERSON WITHIN 14 DAYS OR AFTER 90 DAYS OF RECEIVING THE 2ND DOSE, USUAL QUARANTINE GUIDELINES APPLY.