

**DATE:**

2/11/2021

**AGENDA ITEM (ACTION ITEM):**

Consider/Approve the schematic design and design development plan for the Beechgrove Elementary Addition and Renovation Project (BG 21-140) from PCA Architectural Firm.

**APPLICABLE BOARD POLICY:**

01.1 Legal Status of the Board

**HISTORY/BACKGROUND:**

PCA Architectural Firm has prepared schematic designs associated with the Beechgrove Addition and Renovation Project. The schematic design reflects the proposed construction floor plan, site development plan, and building elevation. The plan demonstrates the desired improvements for the school.

**FISCAL/BUDGETARY IMPACT:**

None

**RECOMMENDATION:**

Approve the schematic design and design development plan for the Beechgrove Elementary Addition and Renovation Project (BG 21-140) from PCA Architectural Firm.

**CONTACT PERSON:**

Rob Haney, Chief Operations Officer

\_\_\_\_\_  
Principal/Administrator

*Rob Haney*  
\_\_\_\_\_  
District Administrator

*[Signature]*  
\_\_\_\_\_  
Superintendent

*Use this form to submit your request to the Superintendent for items to be added to the Board Meeting Agenda*

*Principal – Complete, print, sign and send to your Director. Director – if approved, sign and put in the Superintendent's mailbox*

PRINT DATE: 2/16/2021 1:15:03 PM



MAGNETIC	PLAN

	REASSIGNED SPACE
	RENOVATED AREA
	NEW CONSTRUCTION
	NEW OUTDOOR PLAY SPACE

PCA  
ARCHITECTURE

1881 DIXIE HWY, SUITE 130  
FT. WRIGHT, KY 41011  
www.PCA-ARCH.com  
859.431.8612

1

**NOT FOR  
CONSTRUCTION**

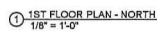
[illegible]

**Beechgrove  
Elementary**  
1029 Bristow Road  
Independence, Kentucky 41051  
BG# 21-140  
Kenton County School District

ARCHITECTURAL SITE  
PLAN

2021-002

AS100



MAGNETIC	FLUX
	

	REASSIGNED SPACE
	RENOVATED AREA
	NEW CONSTRUCTION
	NEW OUTDOOR PLAY SPACE

PCA  
ARCHITECTURE

1881 DIXIE HWY, SUITE 130  
FT. WRIGHT, KY 41011  
www.PCA-ARCH.com  
859.431.8612

**NOT FOR  
CONSTRUCTION**

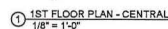
[illegible]

**Beechgrove  
Elementary**  
1029 Bristow Road  
Independence, Kentucky 41051  
BG# 21-140  
Kenton County School District

1ST FLOOR PLAN - NORTH

2021-002

A101



NEW OUTDOOR  
PLAY SPACE

1881 DIXIE HWY, SUITE 130  
FT. WRIGHT, KY 41011  
www.PCA-ARCH.com  
859.431.8612

**NOT FOR  
CONSTRUCTION**

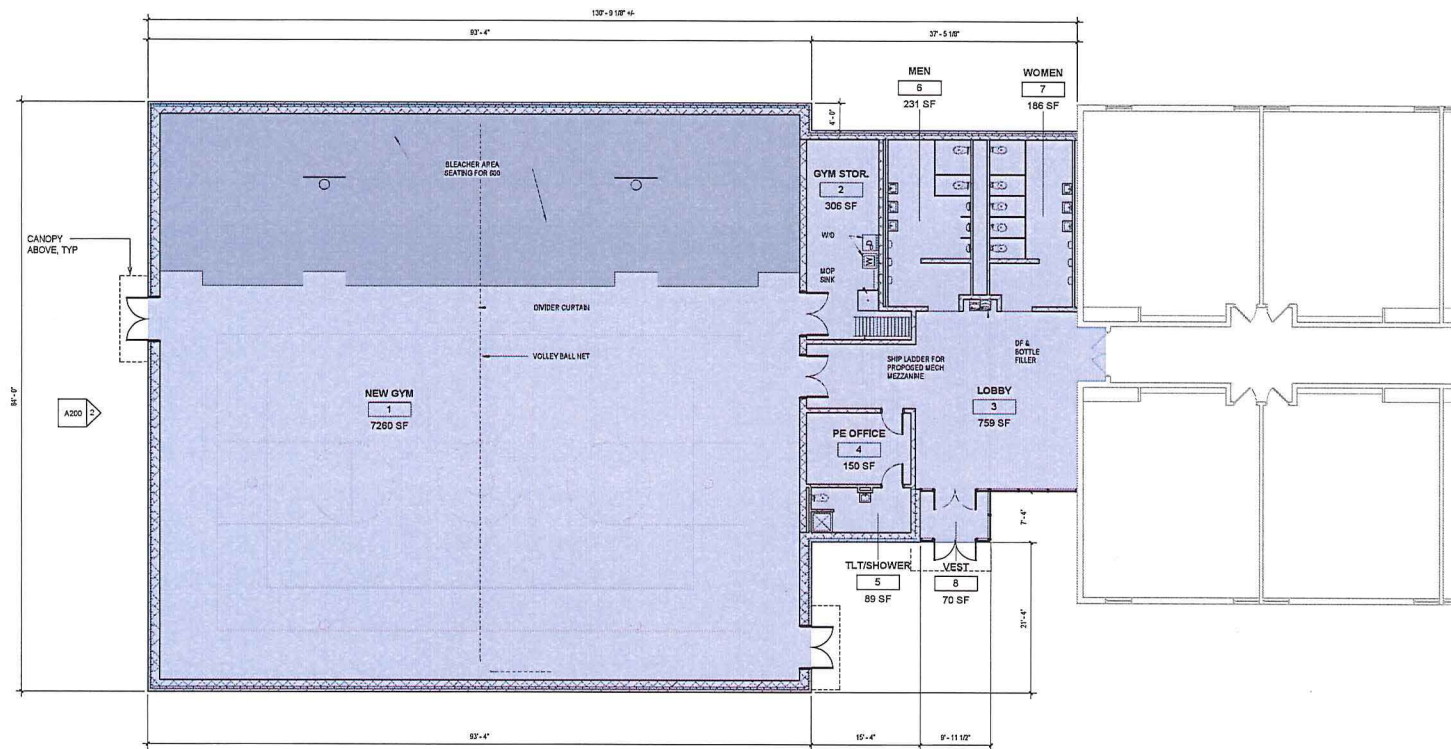
[illegible]

1029 Bristow Road  
Independence, Kentucky 41051  
BG# 21-140  
Kenton County School District

2021-002

A102

PRINT DATE: 2/16/2021 1:15:06 PM



① 1ST FLOOR PLAN - SOUTH  
1/8" = 1'-0"

MAGNETIC	FLUX
----------	------



### LEGEND

-  REASSIGNED SPACE  
 RENOVATED AREA  
 NEW CONSTRUCTION  
 NEW OUTDOOR PLAY SPACE

**PCA**  
ARCHITECTURE

1881 DIXIE HWY, SUITE 130  
FT. WRIGHT, KY 41011  
[www.PCA-ARCH.com](http://www.PCA-ARCH.com)  
859.431.8612

ARCHITECT

**NOT FOR  
CONSTRUCTION**

[illegible]

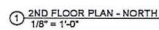
**Beechgrove  
Elementary**

1029 Bristow Road  
Independence, Kentucky 41051  
BG# 21-140  
Kenton County School District

1ST FLOOR PLAN -  
SOUTH

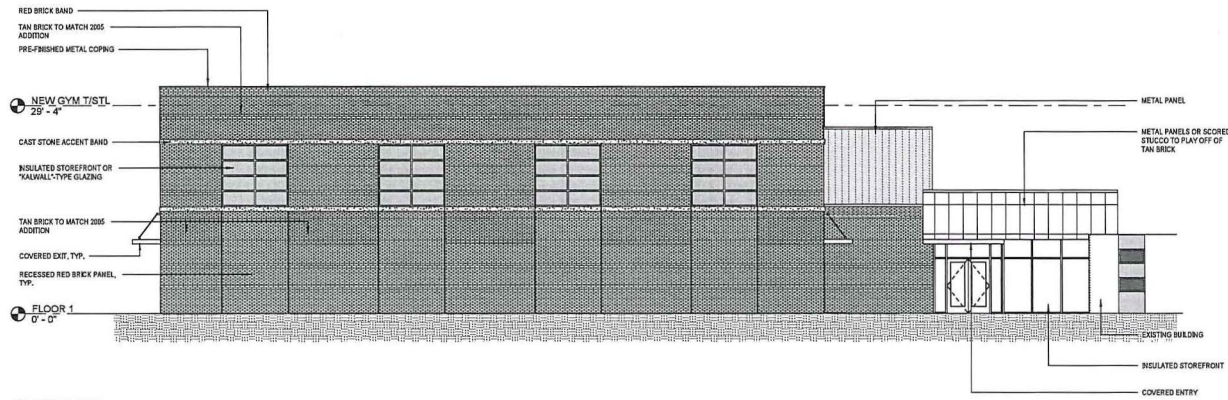
2021-002

A103

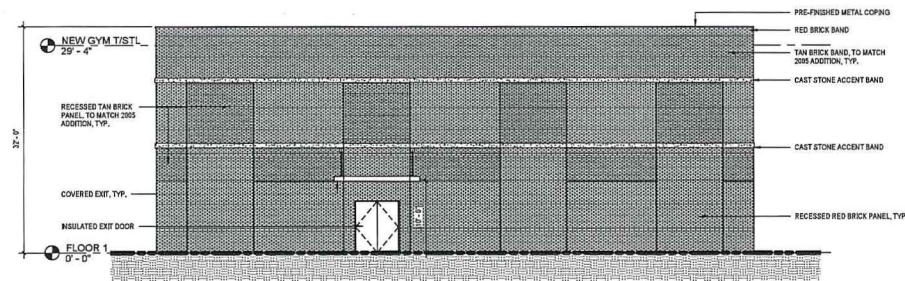


LAGETIC	PLAT
	

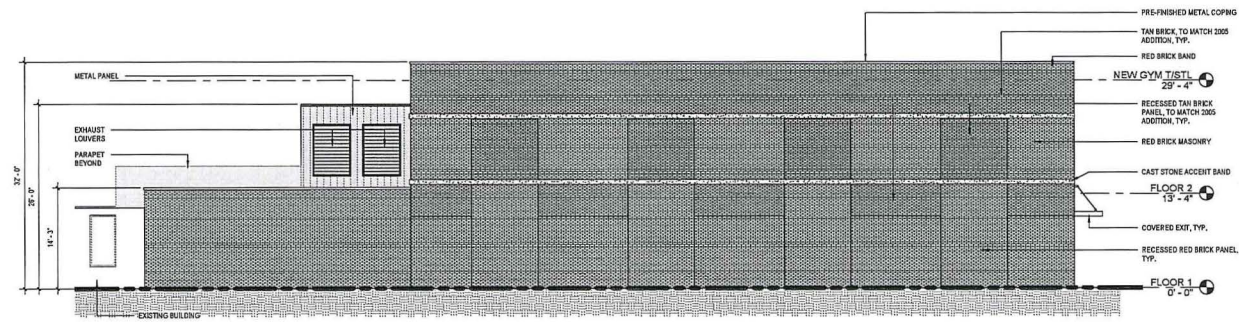
## A104



1 EAST ELEVATION  
1/8" = 1'-0"



2 SOUTH-SKETCH 5  
1/8" = 1'-0"



3 WEST-SKETCH 5  
1/8" = 1'-0"

**PCA**  
ARCHITECTURE

1881 DIXIE HWY, SUITE 130  
FT. WRIGHT, KY 41011  
www.PCA-ARCH.com  
859.431.8512

ARCHITECT

**NOT FOR  
CONSTRUCTION**

ISSUE	NO.	DATE	DESCRIPTION
	01	01/16/2021	SD

**Beechgrove  
Elementary**  
1029 Bristow Road  
Independence, Kentucky 41051  
BG# 21-140  
Kenton County School District

ELEVATIONS

2021-002

**A200**