

**DATE:**

2/11/2021

**AGENDA ITEM (ACTION ITEM):**

Consider/Approve the schematic design and design development plan for the Ryland Heights Elementary Addition and Renovation Project (BG 21-143) from PCA Architectural Firm.

**APPLICABLE BOARD POLICY:**

01.1 Legal Status of the Board

**HISTORY/BACKGROUND:**

PCA Architectural Firm has prepared schematic designs associated with the Ryland Heights Addition and Renovation Project. The schematic design reflects the proposed construction floor plan, site development plan, and building elevation. The plan demonstrates the desired improvements for the school.

**FISCAL/BUDGETARY IMPACT:**

None

**RECOMMENDATION:**

Approve the schematic design and design development plan for the Ryland Heights Elementary Addition and Renovation Project (BG 21-143) from PCA Architectural Firm.

**CONTACT PERSON:**

Rob Haney, Chief Operations Officer

\_\_\_\_\_  
*Principal/Administrator*

*Rob Haney*  
\_\_\_\_\_  
*District Administrator*

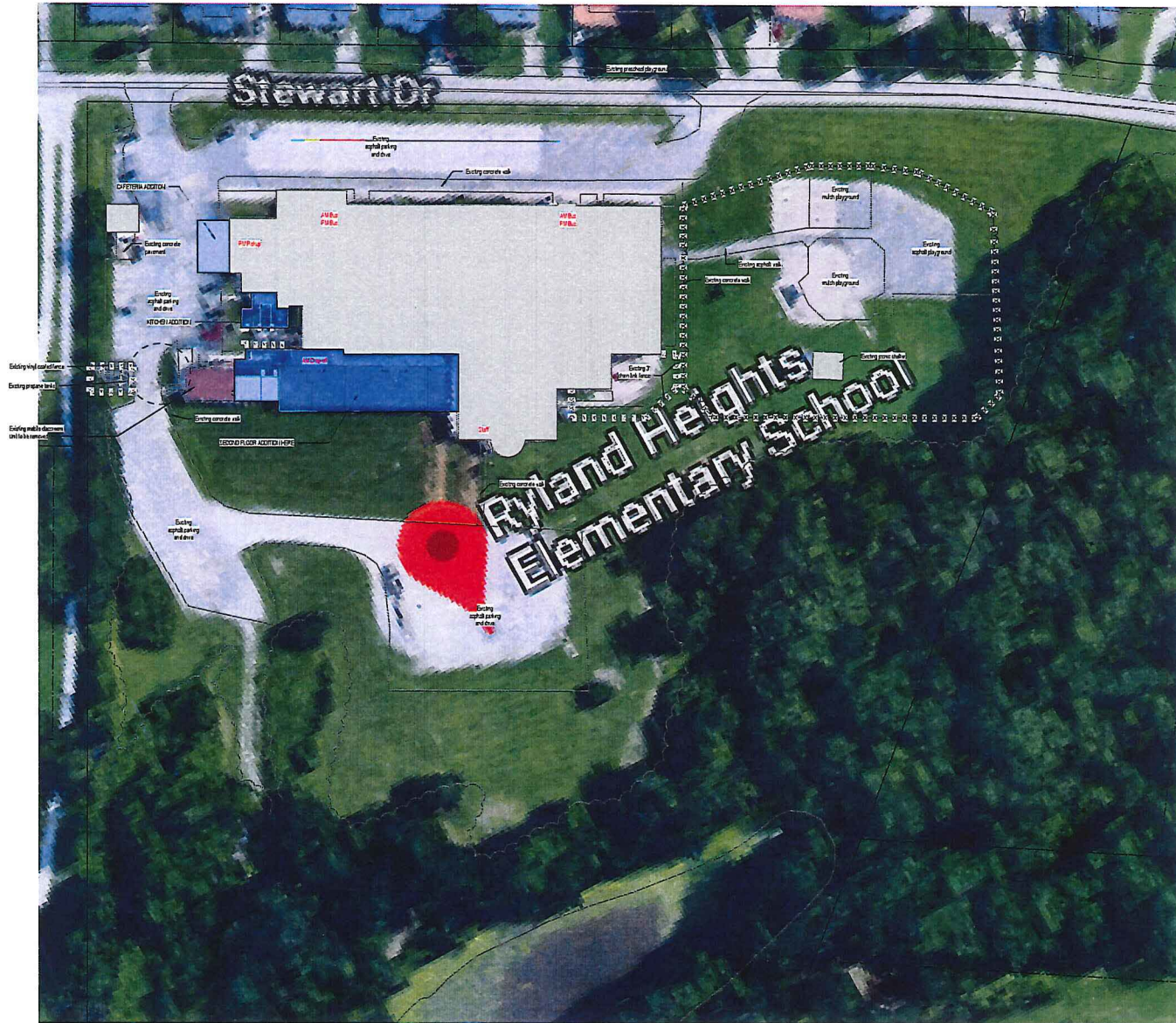
  
\_\_\_\_\_  
*Superintendent*

*Use this form to submit your request to the Superintendent for items to be added to the Board Meeting Agenda*

*Principal – Complete, print, sign and send to your Director. Director – if approved, sign and put in the Superintendent's mailbox*



- LEGEND**
- REASSIGNED SPACE
  - RENOVATED AREA
  - NEW CONSTRUCTION
  - NEW OUTDOOR PLAY SPACE



1 Site  
A101.1 SCALE: 1" = 40'-0"

**PCA**  
ARCHITECTURE

1881 DIXIE HWY, SUITE 130  
FT. WRIGHT, KY 41011  
www.PCA-ARCH.com  
859.431.8612

ARCHITECT

**NOT FOR  
CONSTRUCTION**

NO.	DATE	DESCRIPTION
01	01/15/2021	SCHEMATIC DESIGN

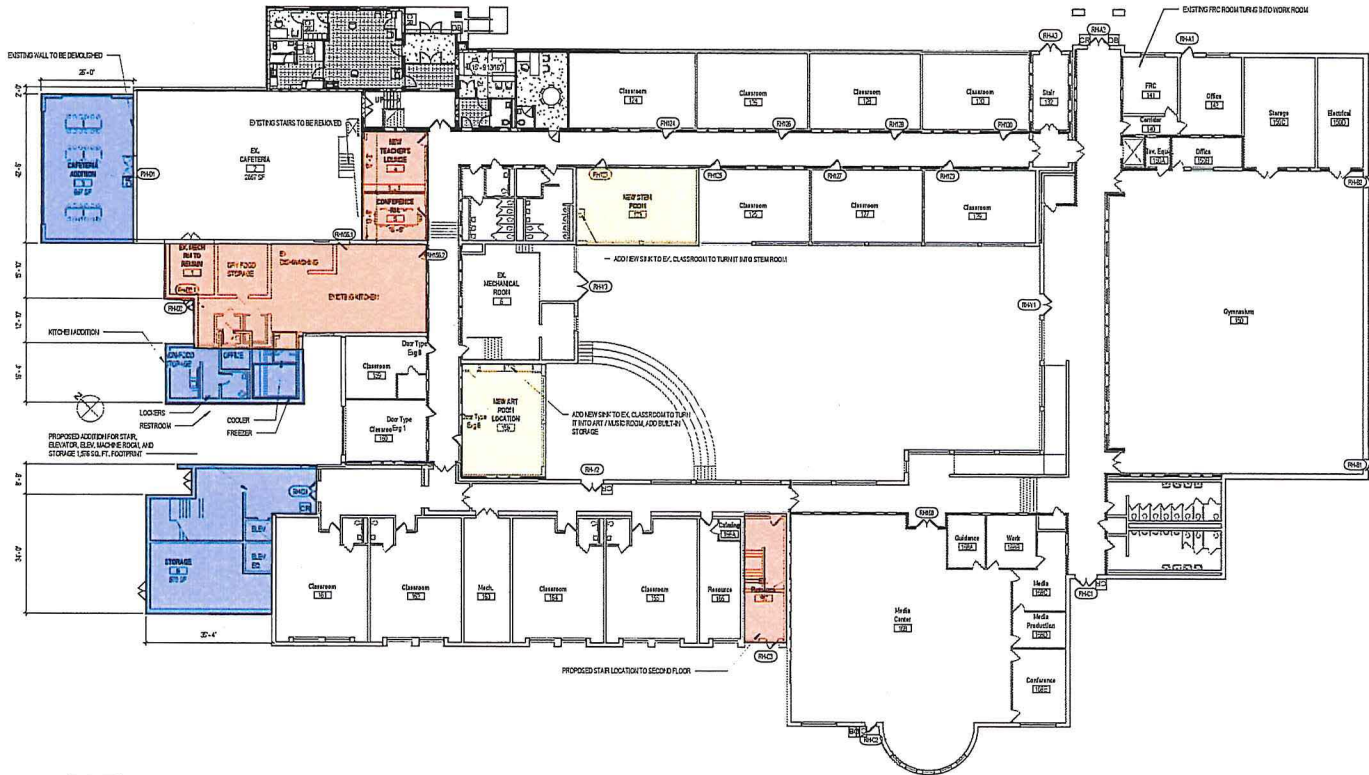
**Ryland Heights  
Elementary**  
3845 Stewart Drive  
Ryland Heights, KY 41015  
BG#21-143  
Kenton County School District

ARCHITECTURAL SITE

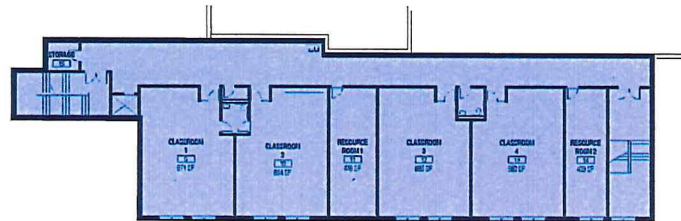
2021-001

**AS100**





1 FLOOR PLAN - FIRST FLOOR  
SCALE: 1/16" = 1'-0"



2 FLOOR PLAN - SECOND FLOOR ADDITION  
SCALE: 1/16" = 1'-0"

- LEGEND**
- REASSIGNED SPACE
  - RENOVATED AREA
  - NEW CONSTRUCTION
  - NEW OUTDOOR PLAY SPACE

**PCA**  
ARCHITECTURE

1881 DIXIE HWY, SUITE 130  
FT. WRIGHT, KY 41011  
www.PCA-ARCH.com  
859.431.8612

**NOT FOR  
CONSTRUCTION**

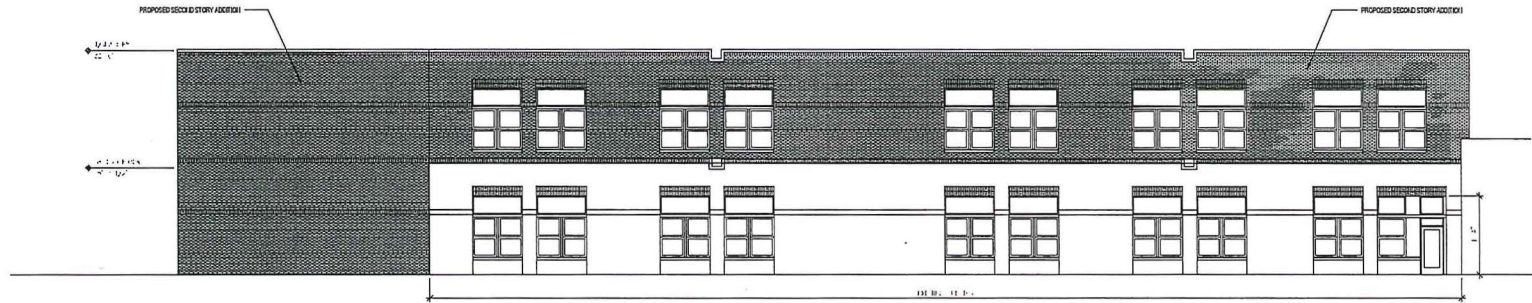
NO.	DATE	DESCRIPTION
01	02/16/2021	SCHEMATIC DESIGN

**Ryland Heights  
Elementary**  
3845 Stewart Drive  
Ryland Heights, KY 41015  
SCH21-143  
Kenton County School District

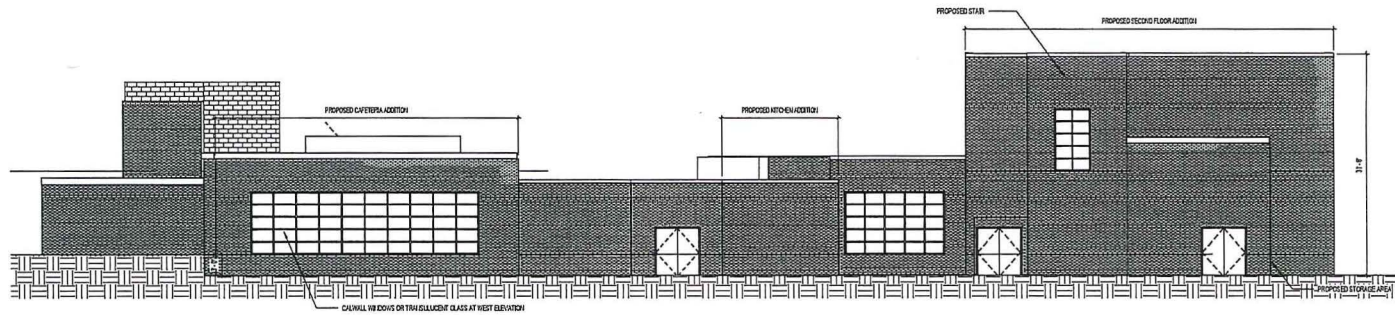
**FIRST FLOOR PLAN**

2021-001

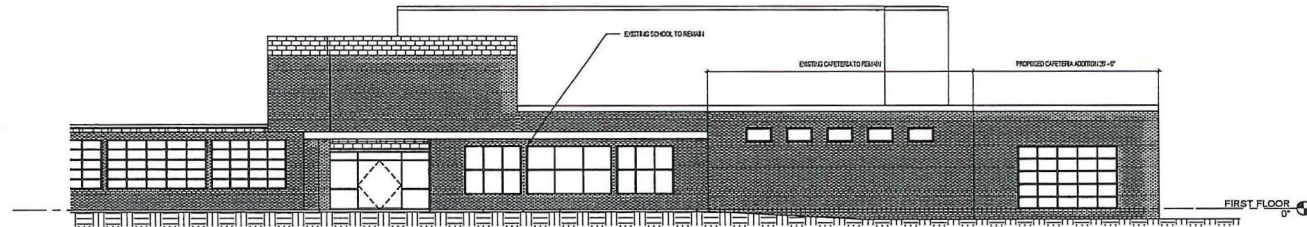
**A101**



3 SOUTH ELEVATION  
SCALE: 1/8" = 1'-0"



2 WEST ELEVATION  
SCALE: 1/8" = 1'-0"



1 NORTH ELEVATION  
SCALE: 1/8" = 1'-0"

**PCA**  
ARCHITECTURE

1881 DIXIE HWY, SUITE 130  
FT. WRIGHT, KY 41011  
www.PCA-ARCH.com  
859.431.8612

**NOT FOR  
CONSTRUCTION**

NO.	DATE	DESCRIPTION
001	08/19/2021	SCHEMATIC DESIGN

**Ryland Heights  
Elementary**  
3845 Stewart Drive  
Ryland Heights, KY 41015  
SG921-143  
Kenton County School District

ELEVATIONS

2021-001

**A101.1**