



# A NEW WAY FORWARD

District Response to the COVID-19 Pandemic

Jefferson County Board of Education  
**February 16, 2021**

# Guiding Principles

## HEALTH AND SAFETY



We commit to doing everything possible to ensure the health, safety, and well-being of our students, staff, and community. Every decision we make will be in accordance with the Kentucky Department of Education (KDE), Kentucky Department for Public Health, Louisville Metro Department of Public Health and Wellness (LMDPHW), and Centers for Disease Control and Prevention (CDC) guidelines for reopening schools.



## HIGH-QUALITY INSTRUCTION

We commit to providing our students with high-quality instruction across all platforms in order to ensure that every student has the opportunity to learn and grow.



## FLEXIBILITY

We commit to remaining flexible in these highly uncertain times. We will be ready to adapt to new public health circumstances in accordance with expert guidance in order to safeguard our students, staff, and community.

# Guiding Principles



## **EQUITY**

We commit to fostering an environment that supports the emotional health of our students, with a focus on removing barriers and building a system that equips all students with the tools to be successful.



## **ACCURATE AND TIMELY COMMUNICATION**

We commit to ensuring that students, employees, and families have the information they need to remain safe, and we will keep all stakeholders up to date with important information throughout the school year.



## **COMMUNITY TRUST**

We commit to building community trust through our actions. Every decision will be made with all stakeholders in mind and will be guided by students, employees, families, and experts.

# New CDC Guidance

*“People who have been in close contact with someone who has COVID-19 are not required to quarantine if they have been fully vaccinated against the disease within the last three months and show no symptoms.”*

<https://www.cdc.gov/coronavirus/2019-ncov/if-you-are-sick/quarantine.html>

# New State Guidance:

*“Individuals who have received a full series of the COVID-19 vaccination that experience a close contact with an individual infected with COVID-19 and remains asymptomatic after exposure are not required to quarantine if their contact is more than 14 days and fewer than 90 days from their final dose of the COVID-19 vaccine.”*

*COVID-19 Guidance for Schools  
Updated: February 11, 2021 KDE  
Operating Schools After Vaccination*



Video for Back to School



# School Plan Components

# Breakfast and Lunch

- Maintain social distancing.
- Assign seats for contact tracing.
- Reduce the number of students eating in the cafeteria (by using other available areas for eating).
- Offer multiple options for serving meals that may include the following:
  - Grab n' Go Breakfast as students enter building
  - Kiosk meal service for lunches

- Upon arrival, every student will be processed through temperature checks for screening/exclusion.
- Hand sanitizer will be available.
- Temperature scans are not required before boarding the bus for dismissal.
- Students who have been identified with a fever during the school day will not be transported home on a bus.

## **Arrival and Dismissal**



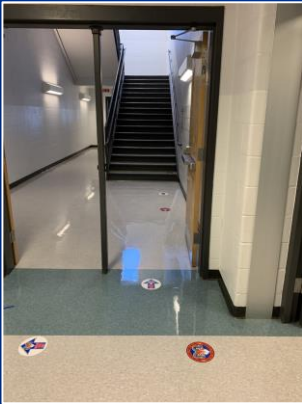
- Social distancing will be enforced in all areas of the campus, including high-volume areas where congestion is likely to occur.

## Common Areas

- Consistent messaging will be placed throughout the building/campus including entries/exits to follow social distancing, wear masks, and practice proper hand washing and respiratory hygiene.
- A recess schedule will be created that limits how many classes are on the playground at one time.
  - Starting with elementary schools, each building will have one water bottle filling station on each floor in the school. Most of our water fountains can be retrofitted with a conversion kit.



## Common Areas



- An entry/exit plan for all employees will be established to maintain social distancing during employee temperature checks and sign-in procedures.
- Restrooms will be provided an adequate supply of liquid soap, paper towels, and toilet paper.
- Hand sanitizer with 60% alcohol or more will be available throughout the school.
- High-contact surfaces will be frequently cleaned throughout the school day.

- Classroom teachers will be told which students have medical waivers on file that permit not wearing a mask.
- A process will be established for ongoing distribution of PPE for staff/students who arrive without masks and throughout the day for those who need additional masks due to loss, soiling, etc.
- Signs will be posted to remind students that masks are required to be worn at all times unless students are actively eating or drinking (unless they have a medical waiver).
- Staff will be issued a clear plastic face shield.
- Guidance on enforcement of new safety protocols has been established.

## Classrooms



- A Health Room/Isolation Room will be designated to isolate students who are ill.
- Adequate health supplies and PPE will be available.
- Nurse Practitioners will be available via phone for telehealth assessments of students.
- Working with contractor to hire nurse/medical assistant for each school

## Health Room/ Isolation Room



# Special Education

## **PPE for Staff**

- Mask (medical/surgical), Gloves, Face Shields when completing procedure
- Gowns may be used depending on the circumstance

## **Other Considerations**

- Student should wear mask only if able to do so
- Student does not need to wear gloves

**ECE  
Catheterization  
and/or Assisting  
with Hygiene**

# ECE Toileting Assistance/ Diapering

## **PPE for Staff**

- Mask (medical/surgical), Gloves, Face Shields when completing procedure
- Gowns are recommended when there is a reasonable expectation that saliva or other bodily fluids may come into contact with an employee's clothing

## **Other Considerations**

- Student should wear mask only if able to do so
- Student does not need to wear gloves

## **PPE for Staff**

- Mask (surgical/medical), Gloves, Face Shields when completing task

## **Other Considerations**

- When staff are working with students who are likely to bite/spit, staff may consider wearing long sleeves or jackets over clothing.
- Student should wear mask only if able to do so
- Student does not need to wear gloves

**ECE  
Feeding  
Assistance**



# ECE G-Tubes and Medications or Feeding

## **PPE for Staff**

- Mask (surgical/medical), Gloves, Face Shields when completing procedure

## **Other Considerations**

- When staff are working with students who are likely to bite/spit, staff may consider wearing long sleeves or jackets over clothing.
- Student should wear mask only if able to do so
- Student does not need to wear gloves

## **PPE for Staff**

- Mask (surgical/medical), Gloves, Face Shields when completing task

## **Other Considerations**

- When staff are working with students who are likely to bite/spit, staff may consider wearing long sleeves or jackets over clothing.
- Student should wear mask only if able to do so
- Student does not need to wear gloves

**ECE  
Hand-Over-Hand  
Assistance  
w/ Tasks**

## **PPE for Staff**

- Mask (surgical/medical), Gloves, Gown, Face Shields when in close proximity
- Make sure each student has student-specific adapted tools/devices and items are routinely cleaned per protocol.

## **Other Considerations**

- Consider assessing students in a group with other providers
- If seeing students in a small group, try to keep the small groups consistent

## **PPE for Staff**

- Mask (surgical/medical), Gloves, Gown, Face Shields when in close proximity
- Consider using clear face mask.

## **Other Considerations**

- Make sure that all equipment/supplies are cleaned appropriately between student sessions.
- If seeing students in a small group, try to keep the small groups consistent

## PPE for Staff

- Clear mask
- Face Shield
- Gloves



# ECE Speech Therapy

## Other Considerations

- Work with the same group of students routinely to decrease transmission.
- If possible may use a desktop plexiglass screen between therapist and students. A face shield worn over a mask can provide similar protection
- Clean area in between student(s)
- If seeing students in a small group, try to keep the small groups consistent



# Ventilation

# Ventilation

## **Info from the Louisville Health Department:**

“Air/HEPA filters do not get to a small enough micron to remove the virus from the air (fortunately virus isn’t airborne), but most filters will remove most droplets that carry the virus. The key is to cycle as much air out of the building as quickly as possible and to recycle as little air as possible.”

**Patrick Rich, R.S.**

**Environmental Health Supervisor**

**Louisville Metro Public Health  
& Wellness Environmental Health & Preparedness**

COVID-19 is a novel virus and smaller than the common flu particle. A large stationary air mover or scrubber with HEPA filters can clean the air, but **the COVID-19 particle is smaller than the 0.3 micron pore size of HEPA filters.**

**How to** cycle as much air out of the building as quickly as possible and to recycle as little air as possible?

- **Keep dampers open on air handling units**

OR

- **Open windows**

# Ventilation



# Ventilation

- HVAC Shop **inspects chillers and boilers yearly and cooling towers monthly.**
- All outdoor air intake dampers have been **inspected to ensure proper function and maximum fresh air** brought into the buildings.
  - Our **building management digital control monitoring system continuously monitors HVAC systems 24-7 to ensure proper functioning of each unit in schools...** so we have continuous monitoring (even throughout the evenings).
  - Additionally, our units **will operate before and after school hours.** This ensures dilution/removal of any potential virus in the air.
  - **Windows are being inspected** for proper functioning

Room or Air Handler	Number of No. Filters	Size of Filters	Type* of Filters	Abbreviation of Month Filters Changed
1st Floor PA	2	16x25R	FG	Jan AUG DEC
2nd Floor PA	10	34x24x2	FG	Jan AUG DEC
3rd Floor PA	8	34x24x2	FG	Jan AUG DEC
4th Floor PA	4	34x24x2	FG	Jan AUG DEC
5th Floor PA	3	34x24x2	FG	Jan AUG DEC
6th Floor PA	3	34x24x2	FG	Jan AUG DEC
7th Floor PA	3	34x24x2	FG	Jan AUG DEC
8th Floor PA	3	34x24x2	FG	Jan AUG DEC
9th Floor PA	3	34x24x2	FG	Jan AUG DEC
10th Floor PA	3	34x24x2	FG	Jan AUG DEC
11th Floor PA	3	34x24x2	FG	Jan AUG DEC
12th Floor PA	3	34x24x2	FG	Jan AUG DEC
13th Floor PA	3	34x24x2	FG	Jan AUG DEC
14th Floor PA	3	34x24x2	FG	Jan AUG DEC
15th Floor PA	3	34x24x2	FG	Jan AUG DEC
16th Floor PA	3	34x24x2	FG	Jan AUG DEC
17th Floor PA	3	34x24x2	FG	Jan AUG DEC
18th Floor PA	3	34x24x2	FG	Jan AUG DEC
19th Floor PA	3	34x24x2	FG	Jan AUG DEC
20th Floor PA	3	34x24x2	FG	Jan AUG DEC
21st Floor PA	3	34x24x2	FG	Jan AUG DEC
22nd Floor PA	3	34x24x2	FG	Jan AUG DEC
23rd Floor PA	3	34x24x2	FG	Jan AUG DEC
24th Floor PA	3	34x24x2	FG	Jan AUG DEC
25th Floor PA	3	34x24x2	FG	Jan AUG DEC
26th Floor PA	3	34x24x2	FG	Jan AUG DEC
27th Floor PA	3	34x24x2	FG	Jan AUG DEC
28th Floor PA	3	34x24x2	FG	Jan AUG DEC
29th Floor PA	3	34x24x2	FG	Jan AUG DEC
30th Floor PA	3	34x24x2	FG	Jan AUG DEC
31st Floor PA	3	34x24x2	FG	Jan AUG DEC
32nd Floor PA	3	34x24x2	FG	Jan AUG DEC
33rd Floor PA	3	34x24x2	FG	Jan AUG DEC
34th Floor PA	3	34x24x2	FG	Jan AUG DEC
35th Floor PA	3	34x24x2	FG	Jan AUG DEC
36th Floor PA	3	34x24x2	FG	Jan AUG DEC
37th Floor PA	3	34x24x2	FG	Jan AUG DEC
38th Floor PA	3	34x24x2	FG	Jan AUG DEC
39th Floor PA	3	34x24x2	FG	Jan AUG DEC
40th Floor PA	3	34x24x2	FG	Jan AUG DEC
41st Floor PA	3	34x24x2	FG	Jan AUG DEC
42nd Floor PA	3	34x24x2	FG	Jan AUG DEC
43rd Floor PA	3	34x24x2	FG	Jan AUG DEC
44th Floor PA	3	34x24x2	FG	Jan AUG DEC
45th Floor PA	3	34x24x2	FG	Jan AUG DEC
46th Floor PA	3	34x24x2	FG	Jan AUG DEC
47th Floor PA	3	34x24x2	FG	Jan AUG DEC
48th Floor PA	3	34x24x2	FG	Jan AUG DEC
49th Floor PA	3	34x24x2	FG	Jan AUG DEC
50th Floor PA	3	34x24x2	FG	Jan AUG DEC
51st Floor PA	3	34x24x2	FG	Jan AUG DEC
52nd Floor PA	3	34x24x2	FG	Jan AUG DEC
53rd Floor PA	3	34x24x2	FG	Jan AUG DEC
54th Floor PA	3	34x24x2	FG	Jan AUG DEC
55th Floor PA	3	34x24x2	FG	Jan AUG DEC
56th Floor PA	3	34x24x2	FG	Jan AUG DEC
57th Floor PA	3	34x24x2	FG	Jan AUG DEC
58th Floor PA	3	34x24x2	FG	Jan AUG DEC
59th Floor PA	3	34x24x2	FG	Jan AUG DEC
60th Floor PA	3	34x24x2	FG	Jan AUG DEC
61st Floor PA	3	34x24x2	FG	Jan AUG DEC
62nd Floor PA	3	34x24x2	FG	Jan AUG DEC
63rd Floor PA	3	34x24x2	FG	Jan AUG DEC
64th Floor PA	3	34x24x2	FG	Jan AUG DEC
65th Floor PA	3	34x24x2	FG	Jan AUG DEC
66th Floor PA	3	34x24x2	FG	Jan AUG DEC
67th Floor PA	3	34x24x2	FG	Jan AUG DEC
68th Floor PA	3	34x24x2	FG	Jan AUG DEC
69th Floor PA	3	34x24x2	FG	Jan AUG DEC
70th Floor PA	3	34x24x2	FG	Jan AUG DEC
71st Floor PA	3	34x24x2	FG	Jan AUG DEC
72nd Floor PA	3	34x24x2	FG	Jan AUG DEC
73rd Floor PA	3	34x24x2	FG	Jan AUG DEC
74th Floor PA	3	34x24x2	FG	Jan AUG DEC
75th Floor PA	3	34x24x2	FG	Jan AUG DEC
76th Floor PA	3	34x24x2	FG	Jan AUG DEC
77th Floor PA	3	34x24x2	FG	Jan AUG DEC
78th Floor PA	3	34x24x2	FG	Jan AUG DEC
79th Floor PA	3	34x24x2	FG	Jan AUG DEC
80th Floor PA	3	34x24x2	FG	Jan AUG DEC
81st Floor PA	3	34x24x2	FG	Jan AUG DEC
82nd Floor PA	3	34x24x2	FG	Jan AUG DEC
83rd Floor PA	3	34x24x2	FG	Jan AUG DEC
84th Floor PA	3	34x24x2	FG	Jan AUG DEC

- **This was completed over Winter Break and will be again** over Spring Break. Plant Operators keep a log to document filter replacement.

- **Custodial staff** has removed debris, wiped down and sanitized the interiors and exteriors of units; this is also completed three times a year.

# Ventilation

**All JCPS schools' ventilation systems meet American Society of Heating, Refrigerating and Air-Conditioning Engineers (ASHRAE) standards** for ventilation of CFM per classrooms (10+/person).

- Outdoor air intake dampers (vents) are designed to remain open during the winter for heating purposes. **Keeping the dampers open assures more dilution of common pollutants and aerosol/potential COVID-19 particles.**
- Our various types of HVAC systems produce a sufficient number of air exchanges. Continued operation throughout the school day, of air handlers (central air) and uni-vents **will guarantee the 6 to 20 air exchanges per hour.**

# Ventilation



# Mitigation Efforts

# Gloves



Vinyl Powder  
Free, 100 per  
box - small,  
medium, large  
and ex-large

12,222 boxes in the  
warehouse

**Personal  
Protective  
Equipment**

# Face Shields



Foam headband  
NTI-Fog plastic

48,581 in the  
warehouse

**Personal  
Protective  
Equipment**

# Thermometers



Digital  
Forehead  
Thermometers

1,658 in the warehouse

**Personal  
Protective  
Equipment**

# Masks (Adult-Sized)



**Personal  
Protective  
Equipment**

Masks, Dust Particle, Respirator N95	176,480 in the warehouse
Masks, Disposable Adult Sized	1,718,691 in the warehouse
Masks, Cloth Adult	756,183 in the warehouse
Masks, Clear Adult (speech therapy)	2,200 in the warehouse
<b>TOTAL</b>	<b>2,653,554</b>



# Masks (Student Sized)



## Personal Protective Equipment

Masks, Disposable, Primary	690,000 in the warehouse
Masks, Disposable, Intermediate	797,500 in the warehouse
Masks, Cloth Washable Primary	195,000 in the warehouse
Masks, Cloth Washable Intermediate	486,649 in the warehouse
Masks, Clear Student (speech therapy)	9,988 in the warehouse
<b>TOTAL</b>	<b>2,179,137</b> (this does not included our donated masks!)

# Gowns



## Personal Protective Equipment

Gown, Disposable	19,502 in the warehouse
Gown, Cloth	9,075 in the warehouse

# Shoe Covers and Head Covers



Shoe covers	3,520 in the warehouse
Disposable head covers	495 in the warehouse

**Personal  
Protective  
Equipment**

# Tri-fold Sneeze Guards



Tri Fold Sneeze Guard  
for students with Mask  
Waiver

100,000 ordered

**Personal  
Protective  
Equipment**

# Photos from Warehouse of our PPE-Face Shields





# Photos from Warehouse of our PPE-Gowns



# Photos from Warehouse of our PPE-Gloves





# Photos from Warehouse of our PPE-Hand Sanitizer





# Photos from Warehouse of our PPE-Adult Sized Disposable Masks



# Photos from Warehouse of PPE-Adult N95 Masks

N-95 Masks (175,000)



Masks with Clear Panel (2,200 Adult; 9,500 Child)



# Photos from Warehouse of our PPE-Student Sized Disposable Masks





# Photos from Warehouse of our PPE- Cloth Masks



# Photos from Warehouse of our PPE—Clear Masks

Masks with Clear Panel (2,200 Adult; 9,500 Child)





# Photos from Warehouse of our PPE—Shoe Covers and Gloves

Shoe Covers (3,500)



Vinyl Gloves 3,000 boxes (100 ct)



# Photos from Warehouse of our PPE- Donated Masks



**Ford Next Generation  
Learning Donation**

**328,320**

**Kyana Packaging Solutions  
and the Game Changers  
Group**

**132,000**



# Photos from Warehouse of our PPE— Student Disinfecting Wipes





# Photos from Warehouse of our PPE— Back to School Kits

Multiple Schools' "Back-to-School PPE Kits"



Portland Elementary "Back-to-School PPE Kit"



Fairdale & Newburg "Back-to-School PPE Kits"



Multiple Schools' "Back-to-School PPE Kits"



# Photos from Warehouse of our PPE— Back to School Kits

Ackerly "Back-to-School PPE Kit"



Male High School "Back-to-School PPE Kit"



Roosevelt-Perry and King "Back-to-School PPE Kits"



J.Graham Brown "Back-to-School PPE Kit"





# Supplies Warehouse: PPE—Reserve Inventory



# Supplies Warehouse: PPE—Reserve Inventory



# Supplies Warehouse: PPE—Reserve Inventory





# JCPS Delivery Trucks



- Use disinfectants approved by the Environmental Protection Agency (EPA).
- Implement a robust cleaning and disinfecting program to prevent transmitting viruses from surfaces to people.
- Use battery-powered sprayers that deliver the disinfectant as a mist to provide coverage in harder-to-reach areas.
- Increase the frequency of cleaning and disinfecting high-contact surfaces.
- Provide classroom teachers access to disinfecting wipes.

# Cleaning and the Environment

- State guidelines say that children and staff should not come to school if they have a temperature of 100.4°F or above, new cough, vomiting, diarrhea, or a new rash.
- Students should also stay home from school if they have been in contact with someone who is diagnosed as currently having COVID-19.
- Temperature checks will be done as students and staff come into school.
- Parents/Guardians of bus riders attest that they will not send a child on the bus who has a temperature of 100.4°F or higher.

## Screening and Exclusion



- Working with contract company to hire additional medical staff to make sure each school has coverage
- A school will report a positive case of COVID to the JCPS Health Services team who will work with the local Health Department to contact those who may need to self-quarantine.
- For those identified as a close contact to a case, the length of time for self-quarantine is usually 14 days after the last exposure.
  - People diagnosed with COVID-19 are usually out of school for 10 days beyond the start of symptoms or a positive test. That can vary depending on how sick someone is and other circumstances.
  - Your child can return to school when the local health department or the student's provider provides clearance documentation for the school record. A negative COVID-19 test is NOT required for a student to return to school.

# Contact Tracing

- PPE training for all
- PPE training for ECE teachers
- SCM training for SCM team
- Bus driver training
- Nutrition Services training  
(already completed)

## Examples of Training

Transportation

Custodial

Staffing

**Challenges**

# Transportation

## **Currently:**

910 routes

757 drivers

10 new hires in training

70 subs (ORDs and subs)

29 drivers on leave approved past March 15th

808 drivers for 910 routes before daily call-ins

## **Solutions:**

Work with contractors

Recruit retired drivers

Moving second shift in elementary to come in earlier to support schools

Centralized Night crew that can be moved to support schools when needed

Currently (2.11.21) there are 112 custodial vacancies

Current plans to supplement custodians:

- Ahead Human Resources: 25
- Other contractors: 30
- Retired Plant Operators: 16 interested
- Offering the opportunity to bus drivers to sub
- Reaching out to more custodial contractors

**Cleaning  
and the  
Environment**

# Memorandum of Understanding with JCTA

- COVID-Related Supplies and Services
- Compliance Assurance
- Collaborative reopening committees (School and District)
  - Non-ADA Determinations for employee Work Location Assignment
  - Employees on COVID vaccine waitlist

**Human  
Resources**

# Employee Requests for Accommodations

- Americans with Disabilities Act or KY Pregnant Worker Act
- Special Consideration Requests
- Withdrawn Requests
- Additional Information

**Human  
Resources**

# Summary

District Plan based on State Guidance:



School plans found on JCPS website:

Return To School Portal 2020-2021				
ATHERTON HIGH SCHOOL				
FAMILY OPTION #1 : In-Person Option				FAMILY OPTION #2: Virtual Learning Option
KDE COVID-19 Reopening Resources				District FAQ Sheet
District Guidelines:	Personal Protective Equipment	Social Distancing	Screening, Exclusion & Contact Tracing	JCPS teachers Digital Curriculum Platform: Google Classroom Virtual Instruction: Google Meets or Microsoft Teams School-based extracurricular activities Gifted and Talented, ECE, Advanced Placement and ESL Breakfast and Lunch will be available
	Cleaning and the Environment	Riding the School Bus	School Visitors	
Special Guidelines:	ECE (Special Education)		Early Childhood	
School Specific Guidelines:	Arrival and Dismissal	Breakfast and Lunch	Classrooms	
	Common Areas (Front Office, Restrooms, Playground,		Health Room/ Isolation Room	



# Summary:

## Hybrid Proposal for Middle and High School

MONDAY	TUESDAY	WEDNESDAY	THURSDAY	FRIDAY
A - IN PERSON	A – IN PERSON	REMOTE LEARNING DAY FOR ALL	B – IN PERSON	B – IN PERSON
B - REMOTE	B - REMOTE	REMOTE LEARNING DAY FOR ALL	A - REMOTE	A - REMOTE

**Elementary: 5 days a week**

# Feedback and Questions

