

District Response to the COVID-19 Pandemic

Onward, Together

Jefferson County Board of Education
February 9, 2021

Principals

- St. Matthews Elementary- Scott Collier
- Iroquois High- Dr. Rob Fulk
- Ramsey Middle- Dr. Terra Greenwell
- DuBois Academy- Robert Gunn
- Gutermuth Elementary- Laura Mullaney
- Ballard High- Dr. Jason Neuss
- Dawson-Orman- Dr. Mary Beth Stevens
- Brandeis Elementary- Dr. Shervita West

Assistant Superintendents

- Academic Supports- Dr. Alicia Averette
- Culture and Climate- Dr. Katy DeFerrari
- Teaching and Learning- Michelle Dillard
- Elementary- Dr. Paige Hartstern
- Elementary - Joe Leffert
- Elementary- Dr. LaMesa Marks-Johns
- High Schools- Christy Rogers
- Middle- Jessica Rosenthal (Executive Administrator)
- Accelerated Improvement- Dr. Nate Meyer

Arrival and Dismissal

- Upon arrival, every student will be processed through temperature checks for screening/exclusion.
- Hand sanitizer will be available.
- Temperature scans are not required before boarding the bus for dismissal.
- Students who have been identified with a fever during the school day will not be transported home on a bus.

Breakfast and Lunch

Cafeteria- [LINK](#)

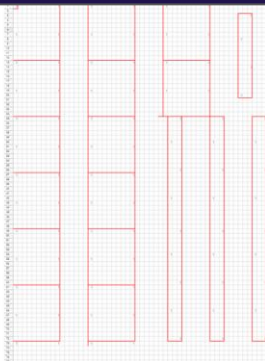
Wall to Wall has an average of 81 ft x 59 ft

Doubling 28 of the the big cafeteria tables to achieve straight across seating

Using 4 ft by 8 ft tables to supplement more seating

6 ft of distance between tables

91 students max



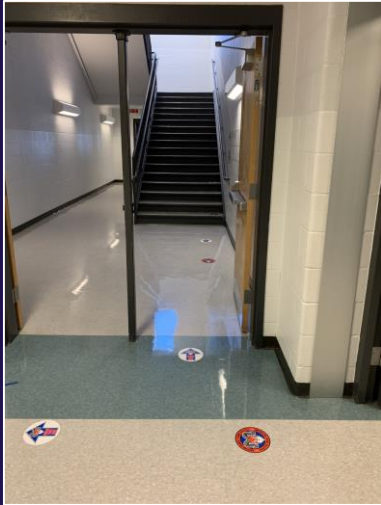
- Maintain social distancing.
- Assign seats for contact tracing.
- Reduce the number of students eating in the cafeteria (by using other available areas for eating).
- Offer multiple options for serving meals that may include the following:
 - Grab n' Go Breakfast as students enter building
 - Kiosk meal service for lunches

Common Areas



- Social distancing will be enforced in all areas of the campus, including high-volume areas where congestion is likely to occur.
- Consistent messaging will be placed throughout the building/campus including entries/exits to follow social distancing, wear masks, and practice proper hand washing and respiratory hygiene.
- A recess schedule will be created that limits how many classes are on the playground at one time.

Common Areas



- An entry/exit plan for all employees will be established to maintain social distancing during employee temperature checks and sign-in procedures.
- Restrooms will be provided an adequate supply of liquid soap, paper towels, and toilet paper.
- Hand sanitizer with 60% alcohol or more will be available throughout the school.
- High-contact surfaces will be frequently cleaned throughout the school day.

Classrooms



- Classroom teachers will be told which students have medical waivers on file that permit not wearing a mask.
- A process will be established for ongoing distribution of PPE for staff/students who arrive without masks and throughout the day for those who need additional masks due to loss, soiling, etc.
- Signs will be posted to remind students that masks are required to be worn at all times unless students are actively eating or drinking (unless they have a medical waiver).
- Staff will be issued a clear plastic face shield.

Health Room/ Isolation Room



- A Health Room/Isolation Room will be designated to isolate students who are ill.
- Adequate health supplies and PPE will be available.
- Nurse Practitioners will be available via phone for telehealth assessments of students.
- Working with contractor to hire nurse/medical assistant for each school

Early Childhood



- Temperature checks at bus stops
- Specialized classroom set-up to minimize contact and maintain social distancing
- Students grouped into consistent cohorts of 2-3 for contact tracing
- Breakfast, lunch and snack in the classroom
- Distancing and classroom chart for nap time
- Developmentally appropriate lessons to model expectations embedded into daily routines and activity transitions

ECE



- Staff will teach and model expectations for students.
- Schools will have specialized PPE to support ECE staff who are in close contact with students, particularly for toileting or other health supports.
- ECE has provided schools with recommendations of how to support students in all areas of disabilities.
- District ECE resource staff will continue to provide ongoing, live support.

Riding the Bus

- All students will be required to wear a mask unless there is a medical waiver.
- Students will use hand sanitizer upon entry and have assigned seats.
- KDE recommends windows to be open weather permitting.
- Students will be separated to the extent possible on the bus, but the school bus will be loaded without capacity limits.
- There will be a designated seat at the front of the bus reserved for students who show signs of sickness.
- Buses will be cleaned daily and between runs.

Feedback and Questions

