

2020 COUNTY DATA BOOK





Economic Security

Good news

- Pre-pandemic poverty levels were moving in the right direction

Bad news

- Only 3 states had higher child poverty rates
- Almost one-fifth of kids were food insecure





Education

Good news

- Continued improvement in on-time high school graduation and Kindergarten readiness

Bad news

- Almost half not sufficiently prepared for Kindergarten
- Persistent and significant racial disparities in graduation rates





Health

Good news

- Huge improvements in teen births and proportion of mothers smoking during pregnancy
- Record high insurance coverage for kids

Bad news

- Low-weight births remain stubbornly high
- Coverage gap for Latinx children





Family & Community

Good news

- Decline in youth incarceration

Bad news

- Persistent increases in youth in foster care and fewer being reunified with parents
- Pervasive racial disparities throughout the system of juvenile justice

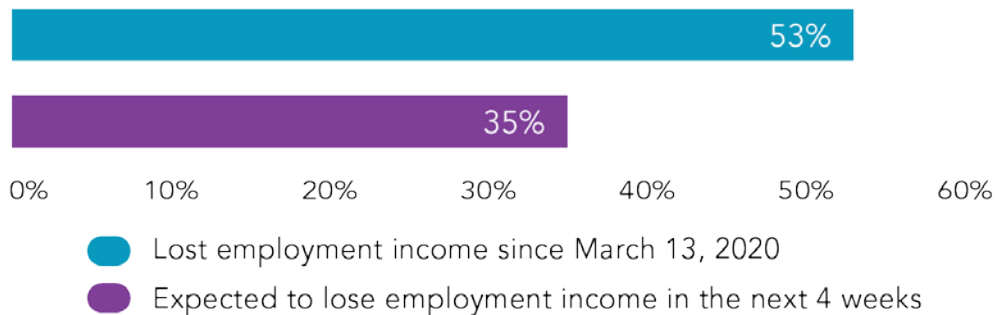




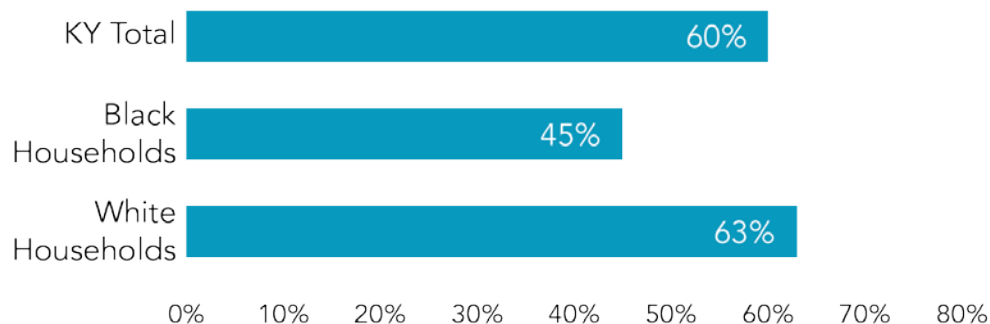
FACING THE DUAL PANDEMICS

OF COVID-19 AND RACIAL INJUSTICE

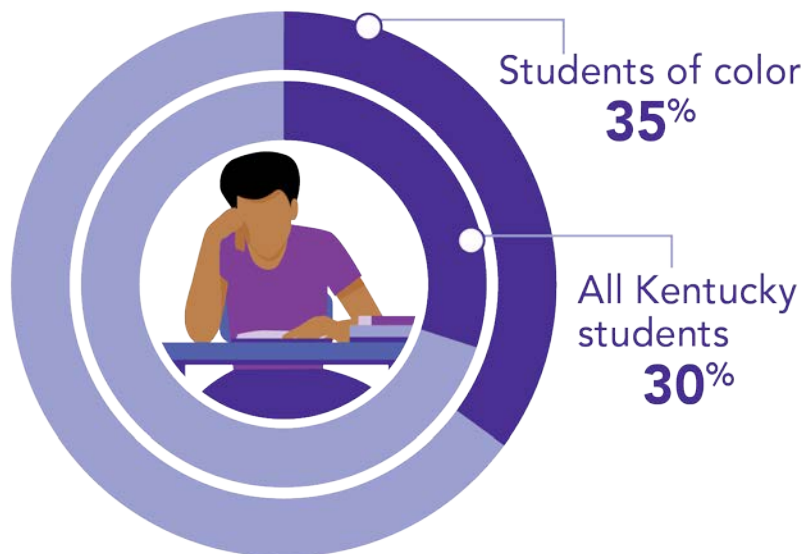
More than half of Kentucky households with children reported losing income from employment since the pandemic began, and more than a third expected to lose income in the month ahead



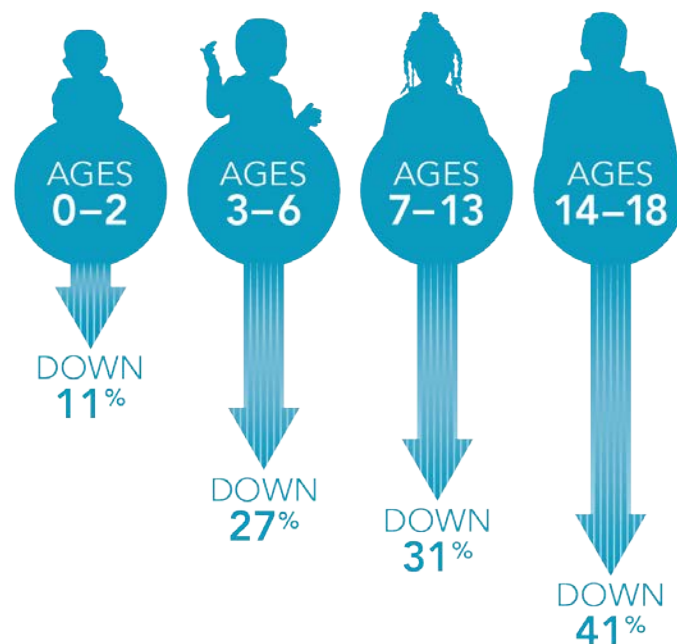
Only 60 percent of Kentucky adults in households with children reported being employed in the past 7 days, and disparities exist by race



Even before the pandemic, more than one in three students of color lacked adequate technology at home, putting them at higher risk of falling behind



The percent of children receiving routine vaccinations has dropped substantially across age groups due to COVID-19



EVEN BEFORE THE PANDEMIC

KENTUCKY'S CHILD CARE SECTOR

WAS INSUFFICIENT FOR FAMILIES

AND UNSTABLE FOR

CHILD CARE CENTERS

HALF

of Kentucky communities are

CHILD CARE DESERTS

WHERE FAMILIES HAVE LIMITED OR NO ACCESS TO CHILD CARE



12% of Kentucky children
have had a **PARENT
INCARCERATED**

AND KENTUCKY RANKS
3RD HIGHEST
in the nation

SOURCE: National Survey on Children's Health, 2017-2018.



Kentucky **youth** Advocates

Woodford County Profile



	KENTUCKY			WOODFORD		
	BASELINE DATA	LATEST DATA	CHANGE SINCE BASELINE*	BASELINE DATA	LATEST DATA	CHANGE SINCE BASELINE* RANKING**
ECONOMIC SECURITY	CHILDREN IN DEEP POVERTY (below 50% of the federal poverty level)					
	12%	11%	✓	12%	11%	✓ 39 of 106
	CHILDREN IN POVERTY (below 100% of the federal poverty level)					
	25.5%	22.3%	✓	16.2%	13.2%	✓ 6 of 120
EDUCATION	CHILDREN IN LOW-INCOME FAMILIES (below 200% of the federal poverty level)					
	49%	46%	✓	37%	39%	✗ 15 of 120
	CHILDREN LIVING IN FOOD INSECURE HOUSEHOLDS					
	—	18.9%	—	—	16.2%	— 16 of 120
SCHOOL DISTRICT LEVEL DATA & RANKINGS	KINDERGARTENERS READY TO LEARN					
	50.0%	51.0%	✓	51.6%	48.3%	✗ 94 of 172
	HIGH SCHOOL STUDENTS GRADUATING ON TIME					
	88.0%	90.9%	✓	90.2%	96.9%	✓ 44 of 167
STUDENT HOMELESSNESS	STUDENTS WITH AN INDIVIDUALIZED EDUCATION PLAN					
	—	15%	—	—	13%	—
STUDENT HOMELESSNESS	STUDENT HOMELESSNESS					
	4%	3%	✓	1%	1%	= 11 of 138

✓ Better ✗ Worse — Baseline data is not comparable, data overlaps with latest timeframe, or the change is neither positive nor negative.
 *Changes were not tested for statistical significance
 **Some counties and school districts not included in rankings due to data suppression or an unavailable data



DATA DASHBOARD



Please visit:

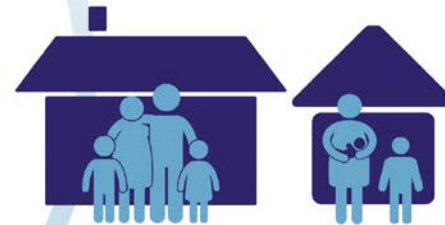
kyyouth.org/kentucky-kids-count/

kyyouth.org/race-equity/

datacenter.kidscount.org/ky



THRIVING COMMUNITIES
launch strong families.



STRONG FAMILIES
launch successful kids.



SUCCESSFUL KIDS
launch a prosperous future for Kentucky.

Questions?

Terry Brooks - tbrooks@kyyouth.org

Patricia Tennen – ptennen@kyyouth.org

Mahak Kalra – mkalra@kyyouth.org

