

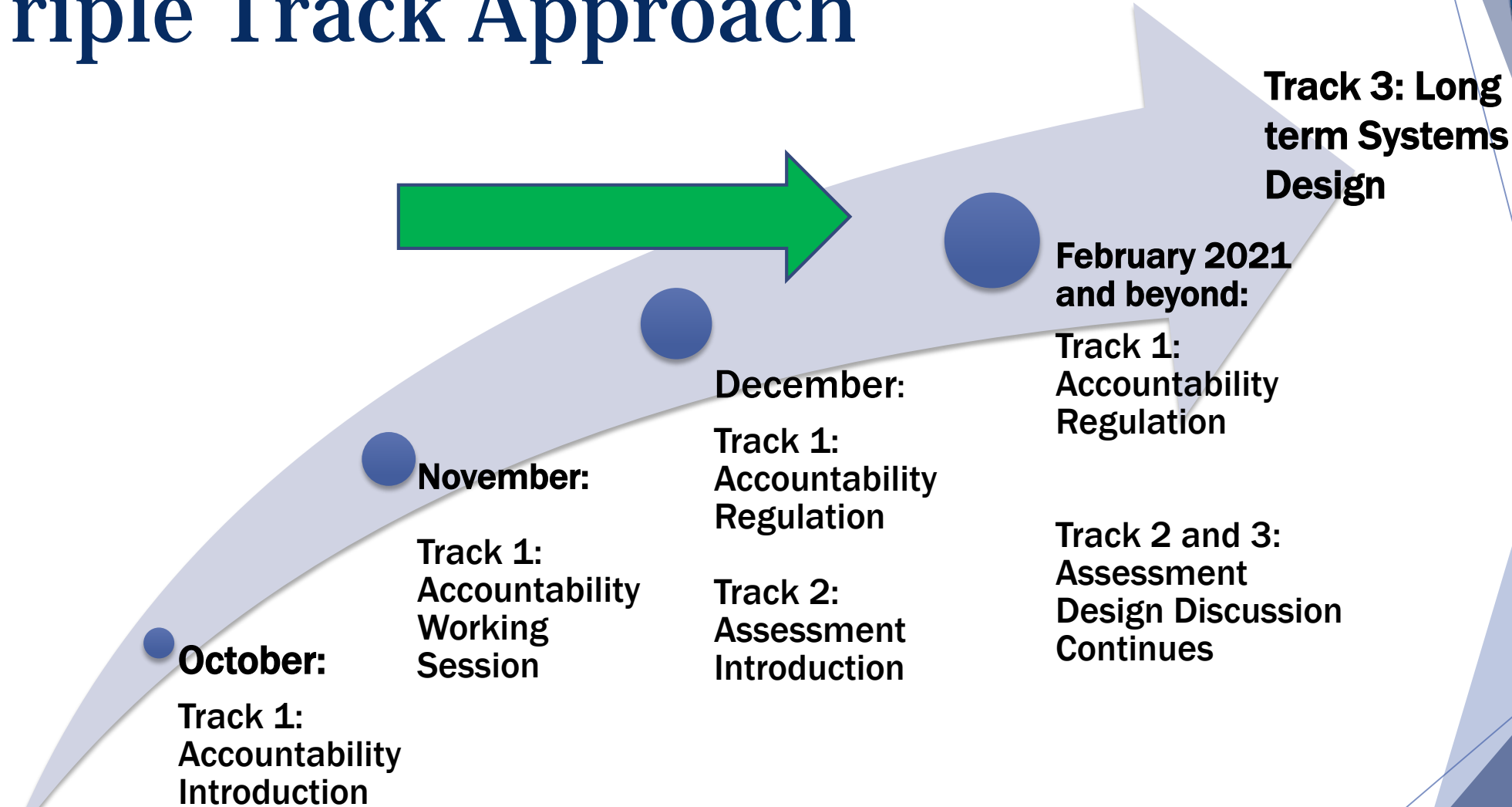


# Future Assessment Discussion

Rhonda Sims, Associate Commissioner  
Jennifer Stafford, Division Director  
Office of Assessment and Accountability

# Steps Toward Systems Design

## Triple Track Approach



# Rationale

- ▶ The Kentucky Board of Education recently reaffirmed their commitment to equity, acknowledging current areas where progress is needed:
  - Equal opportunities to learn
  - Academic achievement gaps
  - Gaps in employability skill attainment
- ▶ Envisioning the future of education is a first step.
- ▶ Assessment is one strand of a larger conversation.



# Three Phase Approach

- ▶ Phase 1: Engagement - involve educators, families and the community, build a network and create a state-wide vision
- ▶ Phase 2: Partnership - establish *Laboratories of Learning*, develop prototypes
- ▶ Phase 3: Transformation - redesign the state assessment system, launch prototypes based on findings from Phase 2



# Partners in the Work

- ▶ The Center for Innovation in Education (University of Kentucky, Gene Wilhoit, Executive Director)
- ▶ The Center for Assessment (Brian Gong, Scott Marion)
- ▶ Division of Innovation (KDE Office of Continuous Improvement) and the KY Innovative Learning Network



