

DATE:

1/20/2021

AGENDA ITEM (ACTION ITEM):

Consider/Approve the schematic design and design development plan for the White's Tower Elementary Addition and Renovation Project (BG 21-145) from PCA Architectural Firm.

APPLICABLE BOARD POLICY:

01.1 Legal Status of the Board

HISTORY/BACKGROUND:

PCA Architectural Firm has prepared schematic designs associated with the White's Tower Addition and Renovation Project. The schematic design reflects the proposed construction floor plan, site development plan, and building elevation. The plan demonstrates the desired improvements for the school.

FISCAL/BUDGETARY IMPACT:

None

RECOMMENDATION:

Approve the schematic design and design development plan for the White's Tower Elementary Addition and Renovation Project (BG 21-145) from PCA Architectural Firm.

CONTACT PERSON:

Rob Haney, Chief Operations Officer

Principal/Administrator

Rob Haney

District Administrator

[Signature]

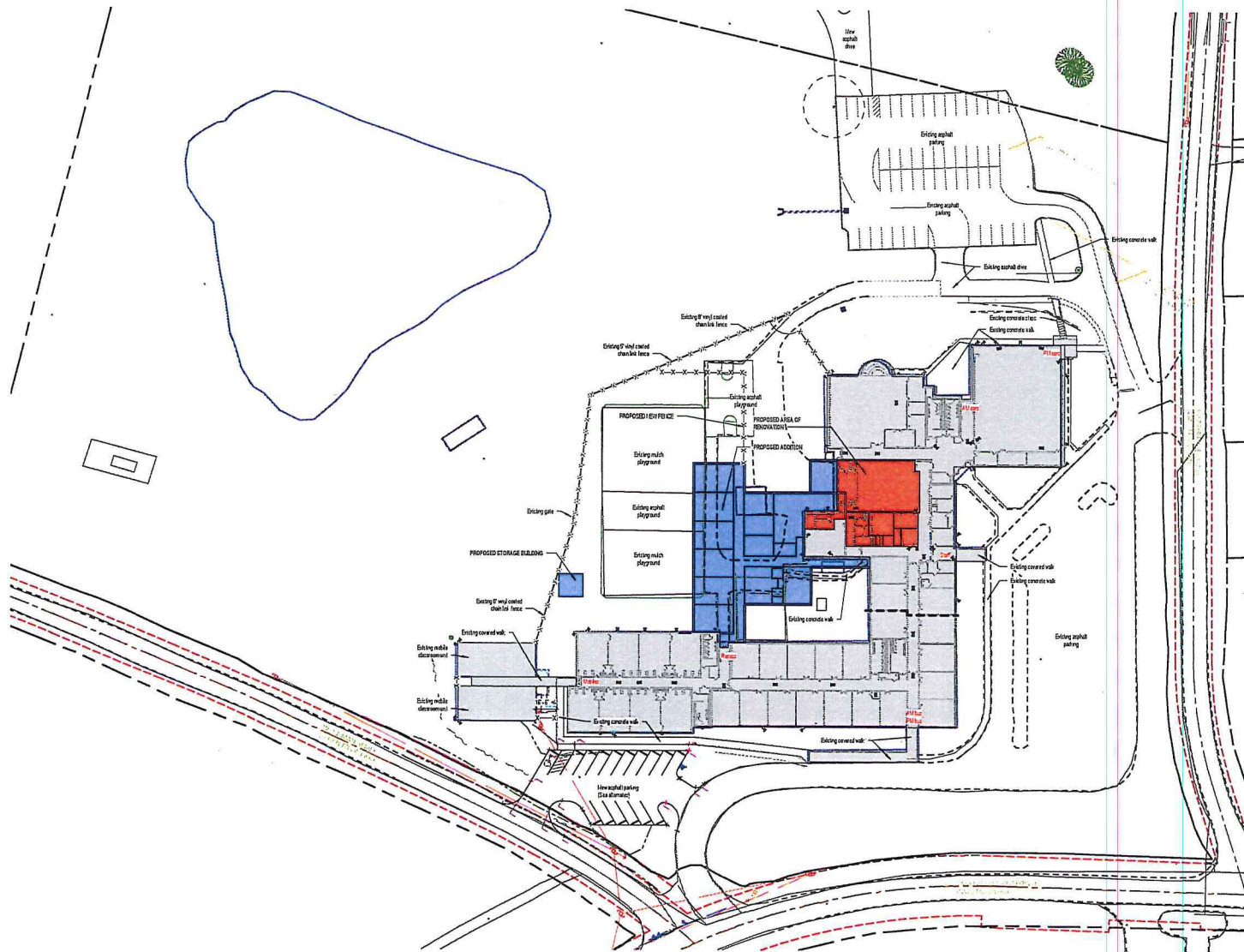
Superintendent

Use this form to submit your request to the Superintendent for items to be added to the Board Meeting Agenda

Principal – Complete, print, sign and send to your Director. Director – if approved, sign and put in the Superintendent's mailbox

PRINT DATE: 1/25/2021 2:10:45 PM

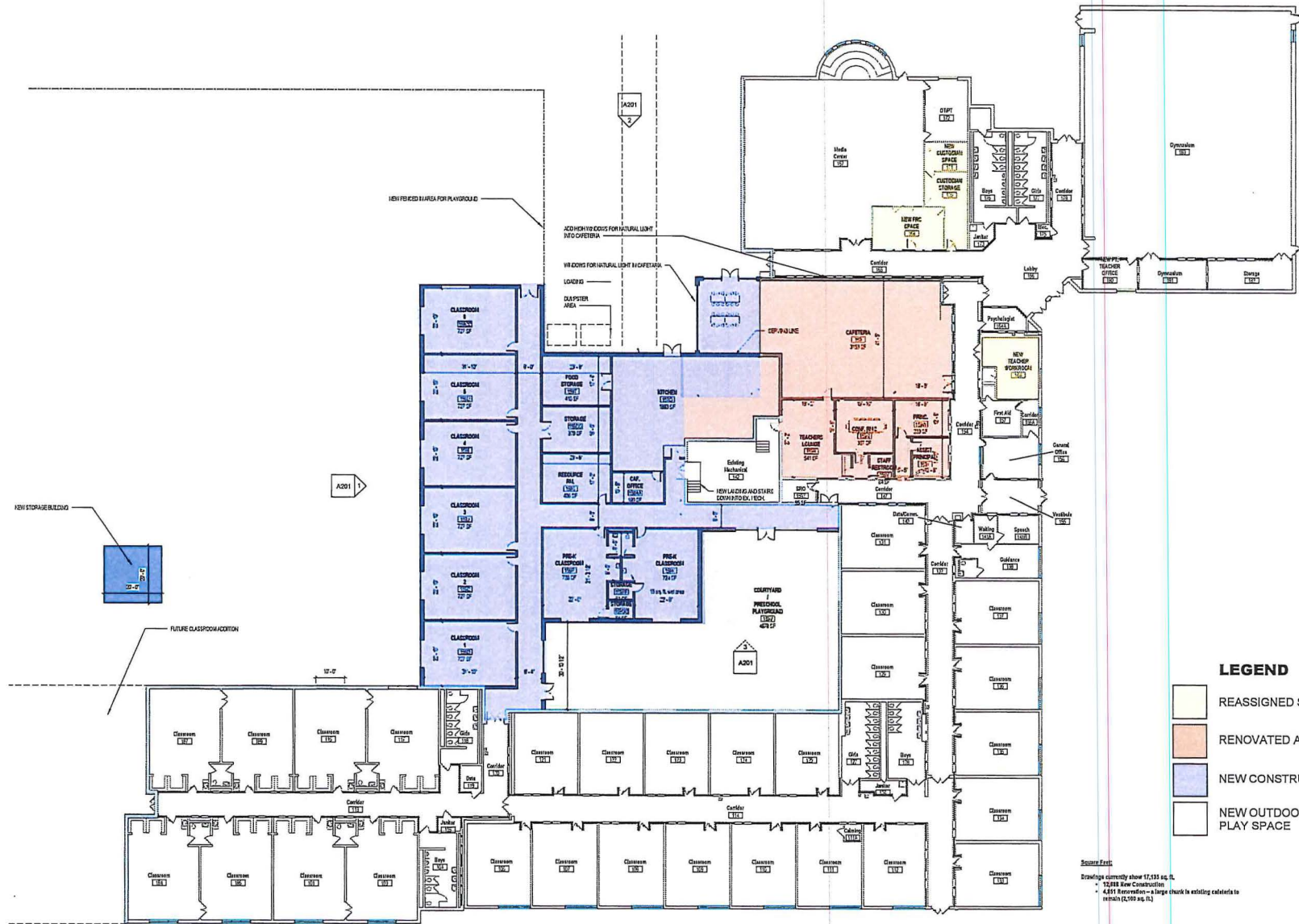
1	ARCHITECTURAL SITE PLAN
A201	SCALE: 1" = 40'-0"



AS100

THIS DOCUMENT AND THE USAS AND DESIGNS REPRODUCED HEREIN, AS AN INSTRUMENT OF PROFESSIONAL SERVICE, IS THE PROPERTY OF PCA ARCHITECTURE, P.C., AND IS NOT TO BE USED IN WHOLE OR IN PART FOR ANY OTHER PROJECT, WITHOUT THE WRITTEN PERMISSION OF PCA ARCHITECTURE, P.C. CONTRACT DOCUMENTS GOVERN THE PROJECT. ALL RIGHTS ARE RESERVED.

PRINT DATE: 10/20/2021 2:38:43 PM



1 FIRST FLOOR PLAN
A101 SCALE: 1/8" = 1'-0"

LEGEND

- REASSIGNED SPACE
- RENOVATED AREA
- NEW CONSTRUCTION
- NEW OUTDOOR PLAY SPACE

Source: SCS
Drawings currently show 12,333 sq. ft.
12,888 New Construction
4,881 Renovation - a large chunk is existing cafeteria to remain (2,100 sq. ft.)

PCA
ARCHITECTURE

1881 DIXIE HWY, SUITE 130
FT. WRIGHT, KY 41011
www.PCA-ARCH.com
859.431.8612

ARCHITECT

NOT FOR
CONSTRUCTION

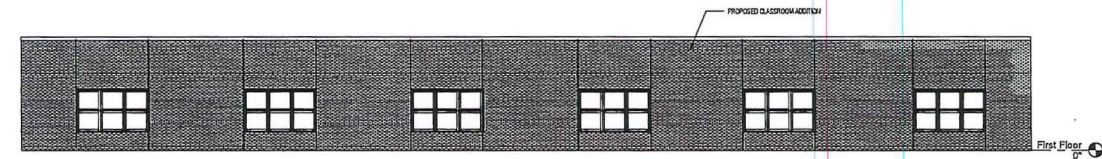
NO.	DATE	DESCRIPTION
1	8/20/2021	SCHEMATIC DESIGN

White's Tower
Elementary
2977 Harris Pike
Independence, KY 41051
BS# 21-135
Kenton County School District

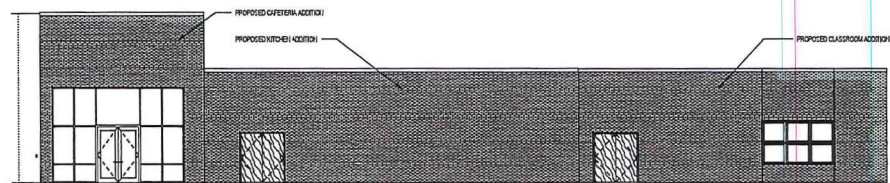
FIRST FLOOR PLAN

2021-003

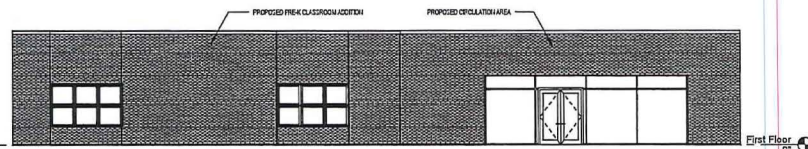
A101



1 WEST ELEVATION
A101 SCALE: 1/8" = 1'-0"



2 NORTH ELEVATION
A101 SCALE: 1/8" = 1'-0"



3 COURTYARD ELEVATION
A101 SCALE: 1/8" = 1'-0"

PCA
ARCHITECTURE

1881 DIXIE HWY, SUITE 130
FT. WRIGHT, KY 41011
www.PCA-ARCH.com
859.431.8612
ARCHITECT

**NOT FOR
CONSTRUCTION**

ISSUE	NO.	DATE	DESCRIPTION
		8/22/2021	SCHEMATIC DESIGN

**White's Tower
Elementary**
2977 Harris Pike
Independence, KY 41051
SG# 21-135
Kenton County School District

ELEVATIONS

2021-003

A201