



Kuta Software LLC
6308 Holland Meadow Lane
Gaithersburg, MD 20882-1236

Price Quote #10110

This quote is good for 45 days

Phone: (877) 563-2285 Fax: (866) 740-7994 Orders@KutaSoftware.com

10/29/20

For:

Cooper High School
2855 Longbranch Rd
Union, KY 41091-8634

Qty	Item Code	Description	Each	Total
1	D/L - IA1 - Site	Cooper High School Infinite Algebra 1 - Three-year license for one campus of one school D/L, 1-A1MV-.....-A8WX (BEING RENEWED)	360.00	360.00
1	D/L - IGE - Site	Infinite Geometry - Three-year license for one campus of one school D/L, 1-GEM2-.....-PNXQ (BEING RENEWED)	360.00	360.00
1	D/L - IA2 - Site	Infinite Algebra 2 - Three-year license for one campus of one school D/L, 1-A2M1-.....-RCBR (BEING RENEWED)	360.00	360.00
1	D/L - IPC - Site	Infinite Precalculus - Three-year license for one campus of one school D/L, 1-PCMC-.....-UM03 (BEING RENEWED)	360.00	360.00
1	D/L - ICA - Site	Infinite Calculus - Three-year license for one campus of one school D/L	360.00	360.00
	Renewal Discount	Discount for renewing software		-703.00
		joe.deters@boone.kyschools.us		
		Sales Tax Not Collected	0%	0.00
Total				\$1,097.00

Purchase orders are welcome


Download a W-9 from [kutasoftware.com/w-9](https://www.kutasoftware.com/w-9)

All prices are in US Dollars

Pay online at [kutasoftware.com/pay](https://www.kutasoftware.com/pay)

Kuta Software Policies

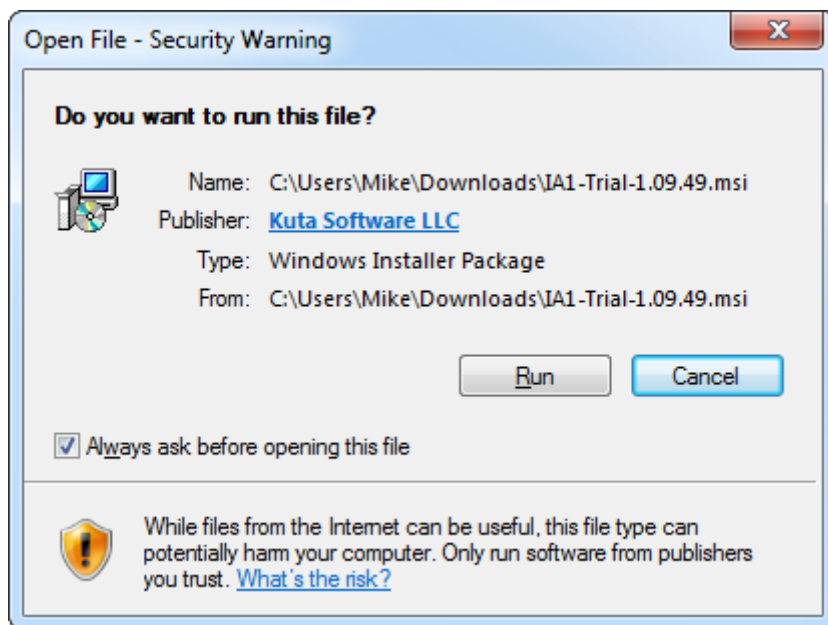
Security

We protect your personal and financial information by using a secure website for processing your online orders. When you are checking out, you should see a closed lock icon  somewhere in your browser window, beginning on the first page in which you enter personal information. This indicates that the connection between your browser and the remote computer is encrypted. Any information sent over this encrypted connection is incomprehensible to anyone who intercepts it.

The location of the lock icon varies depending on your browser and the version of the browser you are using. Look in the bottom corners or near the top of the browser window. You should never enter personal or financial information on any website that does not display this icon. Please remember that on our website you may not see this symbol until the first page in which you actually enter personal information (on step 2 of the checkout process).

Code Signing

The web is full of viruses and spyware. Installing software on your computer is an act of trust. You must trust that the software you are installing is safe. When you install software from Kuta Software, you should see a message such as the one shown below:



This proves that the software you have downloaded is truly coming from Kuta Software and that it has not been tampered with after we have signed it. In a virtual world, code signing serves as virtual shrink wrap. It proves whom the software is coming from and that it hasn't been tampered with along the way.

[Read more about code signing here](#) or on [Wikipedia](#).

Return Policy

You may return any product purchased from Kuta Software LLC, for any reason, within thirty (30) days of purchase. The product being returned must be deactivated from all computers

before a refund is granted. If only some of the products from a combo are returned, the amount reimbursed will be based on the price for which the remaining items could have been purchased.

Privacy Policy

This Privacy Policy describes how Kuta Software LLC collects, protects, uses, and shares information of visitors of www.kutasoftware.com and users of our desktop software products for teachers: Infinite Pre-Algebra, Infinite Algebra 1, Infinite Geometry, Infinite Algebra 2, Infinite Precalculus, and Infinite Calculus.

The Kuta Works learning management system has its own privacy policy [available here](#).

Visitors to www.kutasoftware.com

Our web site may use logging and Google Analytics to track usage trends. Some of the information collected is described below, but please read [Google's privacy policy](#) for more details.

- Google assigned ids
- Internet protocol addresses
- Areas of site visited with date and time
- Operating system and browser settings
- Referring page
- Other data to track usage of site

Credit Card Transactions

Your personal information is collected in order to process the credit card transaction.

Users of Desktop Software

The desktop software for teachers includes Infinite Pre-Algebra, Infinite Algebra 1, Infinite Geometry, Infinite Algebra 2, Infinite Precalculus, and Infinite Calculus.

When desktop software is used for the first time, it must be activated by the teacher or other faculty member. During activation, the following information is collected.

- Windows or Mac user name of teacher or other faculty member
- Computer description entered by user
- Computer id

Usage of Personal Information

Personal information is used solely to provide the services to users.

Disclosure of Personal Information

Personal information is never given, sold, rented, or otherwise shared with any other company, group, or person. Personal information will only be shared when legally required to do so, such as when ordered by a court.

Changes to this Privacy Policy

Kuta Software LLC may revise and update this Privacy Policy from time to time. We will notify you of substantive changes by posting a message on the web site.

Contact Us

If you have questions or concerns about Kuta Software LLC or this Privacy Policy, please [contact us](#).

Site License Renewals

Site licenses expire at the end of the license term. The standard term, which is the one offered on our website, is three years. Unless you explicitly chose a different license term when you purchased your software, your site license is good for three years from the date of first use.

Our software displays the expiration date when you activate the software. You can also click Help > About to view or refresh the expiration date.

Renewal terms, like our initial license terms, are regularly three years. Other durations are available upon request. Renewing your software adds time to its current expiration date, or starts a new license period if the software has already expired. Expired software may not be used and should be removed from all computers until renewed or repurchased.

You can renew any or all site licenses for a particular site, together or separately, regardless of when they were purchased or when they expire. Additionally, you can buy new site license software at the same time to get additional savings.

Please include a completed [renewal form](#) with your renewal order.

We can provide custom price quotes for synchronizing the expiration dates of your licenses or for renewing your software for a period other than three years. Contact.orders@kutasoftware.com with your request.

Pricing for renewals is on a per-site basis. If you are responsible for software at more than one site, find the price for each site in the table below and then add the prices together.

Pricing For One Site To Renew for Three Years

Number of products you are adding		Zero	One	Two	Three	Four	Five
Number of products you are renewing	One	\$262	\$536	\$800	\$1,063	\$1,324	\$1,585
	Two	\$452	\$721	\$986	\$1,248	\$1,510	
	Three	\$642	\$909	\$1,173	\$1,435		
	Four	\$832	\$1,097	\$1,361			
	Five	\$1,022	\$1,286				
	Six	\$1,211					



All prices are in US dollars. Software that is renewed or purchased using the pricing above must be used at the same site that is currently licensed to use the software. The table is based on a quantity of one for each product and on all products being different. Overpayments shall be used to renew the software for longer.

Additional Purchasing Information

Single-User License

A single-user license is good for one person. That one person may have the software activated on up to two computers at any one time. You can activate the software on a new computer by first deactivating it from one that it is currently activated on. A single-user license does not expire but cannot be transferred to another person.

Site License

A site license is good at "one contiguous property of one school." Most schools are only one site and so only require one site license. Schools with multiple campuses require a site license for each campus that they want equipped. Two different schools with adjoining campuses require separate licenses. Two entities are considered different schools if they have different principals.

A site license may be installed on an unlimited number of computers at a site, on that site's network, and on laptops based at that site, even if the laptops are taken home. Also, each teacher at the site can install the software on one home computer. Site licenses are good for three years unless an alternative duration is elected at purchase. [About renewing site licenses](#).

District Licensing

We do not have a separate license agreement for districts. Instead, districts can purchase site licenses for each school to be equipped. For example:

Example Middle School #1:	Infinite Pre-Algebra & Algebra 1	= \$620
Example Middle School #2:	Infinite Pre-Algebra & Algebra 1	= \$620
Example High School #1:	Infinite Pre-Algebra, Algebra 1, Geometry	= \$880
Example High School #2:	Infinite Pre-Algebra, Algebra 1, Geometry, Algebra 2	= \$1,140
TOTAL		= \$3,260

[About Us](#) [Frequently asked questions](#) [Privacy policy](#)