

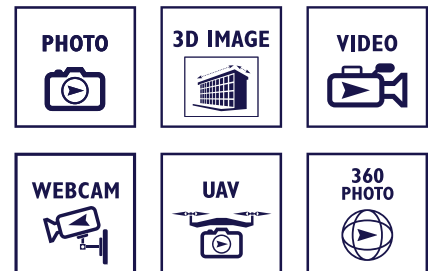




## VISUAL CONSTRUCTION DOCUMENTATION SERVICES THROUGH A SINGLE INTERACTIVE PLATFORM

We live in the age of information, and on a jobsite, information moves fast and accumulates even faster. The key to success is capturing, managing and utilizing that information in the most efficient manner possible. Multivista Construction Documentation is the solution: a complete, interactive visual record of your build process easily accessible for the lifetime of your project.

Since inception in 2003, Multivista has continuously advanced their technology and operational expertise to become the leading provider of visual documentation services for Construction and Facilities Management Professionals. Multivista combines high definition 2D or measurable 3D photography, video, webcam, and drone-powered aerial services with a robust software delivery platform to create interactive as-built records of actual construction conditions and events. Clients invest in Multivista to solve problems quickly and effectively, reducing their overall risk and increasing asset value.



During construction, Multivista provides a fundamental cloud collaboration tool to ensure timely information sharing, quality installations, trade accountability and efficient reporting. After construction, we provide the most accurate, accessible and easily navigated as-built record available for your facility managers and for future expansion, maintenance and modification.

Before, during and after construction, utilize Multivista to maintain accountability, increase quality and reduce costs to ensure the delivery of better built, better-managed projects.



# PROVEN EXPERIENCE

Over 60,000 Projects Awarded

Multivista has contracted on thousands of projects totaling over **4 billion square feet** across North America, Europe, Central / South America, and the Middle East. Our global portfolio covers nearly every vertical in the construction industry.

## RECENT PROJECTS BY VERTICAL



### HIGHER EDUCATION

**2,880** projects completed  
**321,554,486** sq. ft. contracted



### HEALTHCARE

**4,027** projects completed  
**449,161,910** sq. ft. contracted



### GOVERNMENT

**1,146** projects completed  
**117,471,997** sq. ft. contracted



### EDUCATION

**2,330** projects completed  
**278,449,477** sq. ft. contracted



### BUILD-TO-RENT

**4,368** projects completed  
**867,158,547** sq. ft. contracted



### CUSTOM HOUSING

**4,350** projects completed  
**50,635,425** sq. ft. contracted



### COMMERCIAL

**4,000** projects completed  
**595,203,138** sq. ft. contracted



### INDUSTRIAL

**893** projects completed  
**318,618,573** sq. ft. contracted



### TRANSPORTATION

**1,339** projects completed  
**269,893,656** sq. ft. contracted



# REDUCE PROJECT RISKS

## How we have helped our clients mitigate risk

*"I was very impressed with ability to monitor site progress from my desk. Another major benefit is having a record of the construction progress, which allows us to manage quality and 'peel back the layers' to understand how services and finishes have been co-ordinated throughout the works. Multivista video recorded the training and commissioning sessions, which allows the University to re-familiarise themselves with the building systems whenever necessary. Multivista really is a worthwhile investment!"*



**Stella Matko**  
Director of Estates,  
**University of Strathclyde**

*"Multivista offer a first-class service by recording the true narrative of progress on a project. With an unbiased history of construction, the client has an invaluable aide-memoire to help defend unwarranted claims, or challenge discrepancies in contractor progress reporting."*

FINCHATTON

**Doug Walters**  
Commercial Director, **Finchatton**

*"Multivista's user friendly technology, combined with almost real time visual programme analysis provides a secondary support mechanism to fully understand the status of your project. The assistance in Quality Control and retrospective investigations is a huge benefit to any large-scale project. The service pays for itself."*

**Brookfield**

**James Webster**  
Project Manager, **Brookfield**

*"During the construction phase Multivista documented the workmanship of the fire stopping on a regular basis to ensure that the contractor was building to specification. In the future this will also help maintenance above the ceilings and within walls."*



**Sarah Clay**  
Project Manager,  
**NHS King's College Hospital**

*"We have introduced the Multivista platform to several of our client's projects to better aid the recording of site works and provide better all-round visibility of progress for all parties involved. As Project and Cost Consultants we find the ability to instantly access the wealth of accurate photographic information generated invaluable in the day to day execution of our role. Especially at the end of the construction phase, when accurate records are often key to the successful handover of a project."*



**TowerEight**  
Project and Cost  
Management

**Drew Vince**  
Director, **Tower Eight**

*"Multivista has provided us with an additional set of eyes and a record of the construction process. Their construction documentation service is increasingly valuable to us in many of the contractor-led procurement processes. We've had great input from the Multivista team for both training and support."*



**John Donnelly**  
General Manager – Project Development  
**Greater Glasgow & Clyde Health Board**

*"We've been using Multivista for 18 months now and it's been absolutely invaluable to our project, our only regret is not getting Multivista on our project from the beginning. We've been able to use the high quality photos and documentation produced by Multivista to support our position with variations, monthly valuations and even more critical with Loss & Expense claims received from the supply chain. Multivista has also been an extremely helpful tool with an on-going insurance claim. Having the ability to access the entire life-cycle of predetermined locations around site lets us deconstruct the affected areas and demonstrate exactly what works were complete before & after the incident. It's difficult to say an exact return on investment as some of the claims are on-going but it will be 100's of thousands."*

**MULTIPLEX**

**Luke Chivers**  
Senior Quantity Surveyor, **Multiplex**

*"A no brainer, the service pays for itself."*



**Shawn Ruthven**  
Senior Project Manager, **Kindred Construction**



# CONSTRUCTION PHOTOGRAPHY

## Progressions & Slideshows

### PHOTO

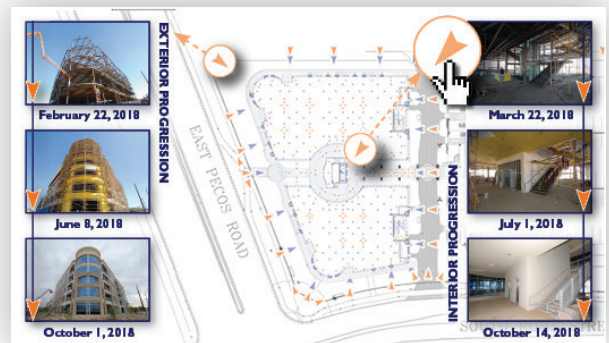


Construction documentation is only as good as the information captured. Multivista photographers are seasoned construction professionals trained to capture critical information at the right time. Our photographers use our unique methods to deliver high quality, reliable and consistent documentation including:

- Taking thousands of inspection-grade photos of your project to memorialize conditions at every milestone.
- Indexing each photo by time and location using interactive architectural drawings for ease of reference.
- Uploading photo shoots within 24hrs for immediate review of exact jobsite conditions from desktop or mobile device.

## PROGRESSION SHOTS

Progression shoots document all interior and exterior work on your project from beginning to end. This type of shoot provides a general project overview and occurs at pre-set times or regular intervals, irrelevant of project phases, to capture the overall progress of your project.



### EXTERIOR PROGRESSIONS

Captures a 360 degree overview of your building's exterior at predetermined intervals or phases to track its construction over time. Shoots begin at substantial structural framing.



### INTERIOR PROGRESSIONS

Captures an overview of your building's interior at predetermined intervals or phases to track its construction over time. Shoots typically begin at substantial interior framing.



### SITE PROGRESSIONS

Captures site work beyond the areas adjacent to your building's exterior, such as parking areas, road work, and fields. It is most suitable for large horizontal projects and projects without a building structure.

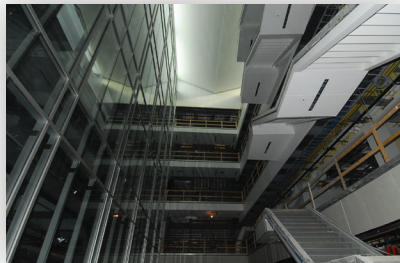


# CONSTRUCTION PHOTOGRAPHY

## Progressions & Slideshows

### CONSTRUCTION SLIDESHOWS

Slideshows capture miscellaneous occurrences or conditions on the project site. These conditions are often those which do not fit neatly into the building envelope interface (e.g., materials stored on-site). Slideshow photographs are not linked to architectural plans in the same manner as formal Progression and Exact-Built® photographs; however, they will be dated, labeled and stored in the project's albums. Slideshows are captured whenever a Multivista photographer is on-site to perform an Exterior Progression shoot. If the Project's scope does not include Exterior Progression shoots, Slideshows will be captured at Multivista's sole discretion when a photographer is on-site.





# CONSTRUCTION PHOTOGRAPHY

## Critical Milestones

### EXACT-BUILT® SHOOTS

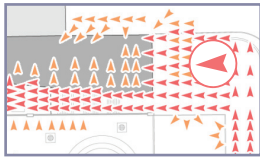
#### PHOTO



Exact-Built® Shoots are event-driven, one-time shoots used to create a complete photographic record of your project at critical milestones. Exact-Built® shoots are detailed, time sensitive, and provide 100% overlapping coverage and are generally captured post inspection and pre-cover up. Multivista offers numerous Exact-Built® shoot types, including high definition, inspection quality 2D or measurement capable 3D images, that can be scheduled and customized according to your project's needs.

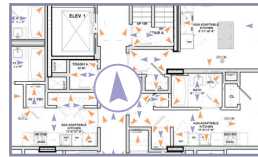
#### SITE-SURVEY EXACT-BUILT®

Captures the pre-existing conditions of your project site and immediate surroundings such as streets, curbs, pavements, structures, and neighboring facilities.



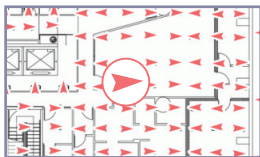
#### MEP EXACT-BUILT®

Captures overlapping photos or measurable 3D images of the post-inspection state of mechanical, electrical, plumbing (MEP) systems in every wall and ceiling.



#### PRE-SLAB EXACT-BUILT®

Overlapping photos or measurable 3D images capture in-slab systems and structural components that will be covered up once a slab is poured.



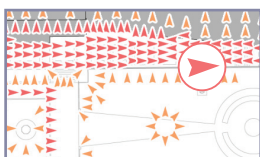
#### ELEVATION EXACT-BUILT®

Captures the conditions of your building's exterior skin or weatherproofing in great detail prior to cover-up.



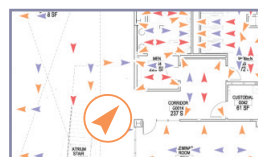
#### UNDERGROUND UTILITIES EXACT-BUILT®

Overlapping photos or measurable 3D images capture underground utilities where they connect to the project prior to cover-up.



#### FINISHED INTERIOR EXACT-BUILT®

Captures the post-inspection conditions of all interior walls, ceilings and floors at a "finished" milestone with overlapping photos or measurable 3D Images.



# CONSTRUCTION VIDEO & WEBCAMS

## Live-Motion & Real-Time

### VIDEO



Multivista's video service is a high-definition solution for facility maintenance in a live-motion format. Our Construction Video service produces professionally edited and formatted video footage that allows clients to maintain a record of the "As Delivered" construction events such as:

- Building Walkthroughs
- Equipment Inspections & Installations
- Facilities Maintenance Instructions
- Training Sessions



### WEBCAM



Multivista's Webcam service is perfect for real-time overviews of current conditions and construction activity across your site. A variety of integrated camera systems can be customized to create a webcam package that's right for your project. Our teams come to your jobsite to help coordinate every detail of your webcam from set-up to project close out. Whether it's for marketing, keeping tabs on site activity or progress records, we can tailor a webcam package that is right for you. All webcam packages include:

- Rugged, Reliable Construction Webcams
- Local, On-Site Service
- Anytime, Anywhere Live Access
- Slideshow & Video of Jobsite Progress
- Secure Hosting for Unlimited Users



PTZ Dome Cameras



Fixed Dome Cameras



Field  
Mobile App



Live  
Streaming



Calendar  
Archiving



In Field  
Support



Time Lapse  
On Demand



Live Technical  
Support



Annotation



Cloud-Based  
Access 24/7



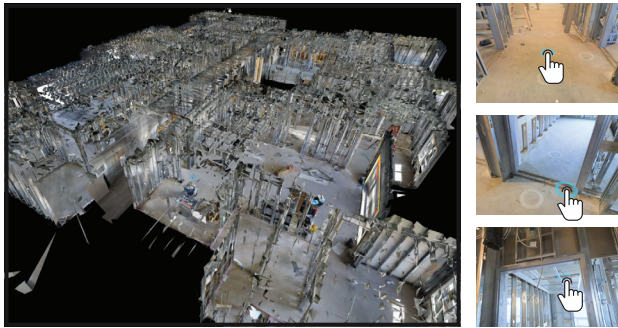


# ADVANCED SERVICES

## Premium Software Upgrades

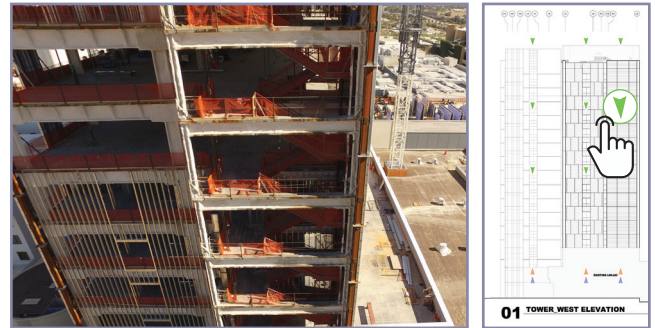
Premium services and software upgrades to Multivista's standard documentation services with higher levels of project insight through specialized visual documentation technologies and efficiency-driving software upgrades.

## PHOTO DOCUMENTATION UPGRADES



### SITE WALK 360°

Site-Walk 360° enhances our classic 2D photographic offering with a rich, immersive 3D viewing and navigation environment.



### MULTIVISTA UAV

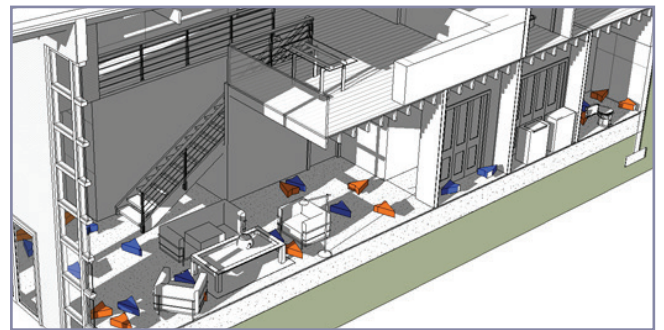
Multivista UAV supplements our standard ground-based visual documentation with aerial imagery, video, or sweeping panorama with measurable aerial imagery.

## SOFTWARE UPGRADES

Punch List										
Type and press enter to search										
All	#	Cat	Work Status	Item Status	Description	Location	Created By	Assignee	Due Date	Attachments
<input type="checkbox"/>	14	RR	Not Started	Open	Ten-rodding around rotunda	Northwest Rotunda	Jane Smith	Rome Towers Contract	6 Days OVERDUE	
<input type="checkbox"/>	15	CK	In Progress	Open	Caulk corner under 2 Railing	Northwest Rotunda	Jane Smith	Rome Towers Contract	6 Days OVERDUE	
<input type="checkbox"/>	16	RR	Not Started	Open	Roof in the penetration	Southwest Corner Roof	Jane Smith	Rome Towers Contract	6 Days OVERDUE	
<input type="checkbox"/>	17	GE	Not Started	Open	Put signs on air handler disconnects	All air handlers	Jane Smith	HVAC Contractor	2 Days OVERDUE	
<input type="checkbox"/>	18	PT	In Progress	Open	Touch up 5th floor balcony railings	5th Floor Balcony	Milo Michaels	Paint Pro	2 Days OVERDUE	
<input type="checkbox"/>	19	CK	In Progress	Open	Fix/Caulk joint behind aluminum fin	Southwest Corner	Jane Smith	Rome Towers Contract	6 Days OVERDUE	
<input type="checkbox"/>	21	WR	Not Started	Open	Damaged EPS	West Side of the Bridge	Jane Smith	Rome Towers Contract	2 Days OVERDUE	
<input type="checkbox"/>	22	PT	In Progress	Open	Paint Touch Up	4th Floor Bridge	Milo Michaels	Paint Pro	6 Days OVERDUE	
<input type="checkbox"/>	23	LF	Not Started	Open	Light is skewed - not square	4th Floor Bridge	Milo Michaels	Project Electrician Sp.	2 Days OVERDUE	
<input type="checkbox"/>	24	LF	Not Started	Open	Another light skewed	4th Floor Bridge	Milo Michaels	Project Electrician Sp.	6 Days OVERDUE	
<input type="checkbox"/>	25	WR	Completed	Open	Damaged EPS	4th Floor Bridge - 1st	Jane Smith	Rome Towers Contract	2 Days OVERDUE	
<input type="checkbox"/>	26	PT	Not Started	Open	Paint is damaged/peeled on	1st Floor Balcony Flat	Milo Michaels	Paint Pro	2 Days OVERDUE	
<input type="checkbox"/>	27	LF	In Progress	Open	Light not working/center light strip only	3rd Floor Bridge	Milo Michaels	Project Electrician Sp.	2 Days OVERDUE	
<input type="checkbox"/>	28	PT	Not Started	Open	Paint chipped	East Side of Bridge	Milo Michaels	Paint Pro	2 Days OVERDUE	
<input type="checkbox"/>	29	EL	Completed	Open	Missing receptacle	Rm 101	Milo Michaels	Project Electrician Sp.	1 Day OVERDUE	
<input type="checkbox"/>	30	EL	Not Started	Open	Light switch dno	Rm 102	Milo Michaels	Project Electrician Sp.	3 Days OVERDUE	

### MULTIVISTA TASK MANAGER

Task Manager allows project team members to create, assign, and update QA/QC, punch, and Facilities Management Lists directly from Multivista's intuitive pictures-over-plans interface.



### MULTIVISTA BIM INTEGRATION

Multivista's BIM Integration service provides a seamless link between a project's Multivista photo documentation and its Autodesk Revit and/or Navisworks model.



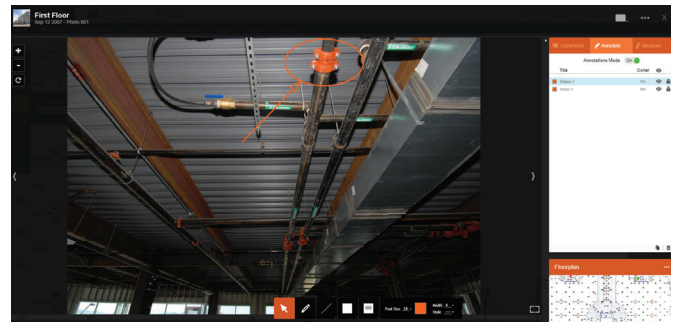
# ADVANCED SERVICES

## Premium Software Upgrades

### THE PLATFORM

The Multivista software platform empowers client teams to identify issues, verify conditions, collaborate and improve workflows both during and post construction. Our technology is focused on the most practical solutions for the budget-minded construction professional and continues to lead the industry because:

- Our design is based on over a decade of experience.
- We invest in frequent leading-edge improvements.
- We deliver powerful client-focused integrations with BIM and e-Builder®.
- We protect client information using the highest rated backups and security protocols.



### MULTIVISTA APP



The Multivista App keeps you and your team connected to a project from anywhere using a mobile device. The app allows you to:

- Access your project photos and floor plans in the field.
- Take your own photos and pin them to your floor plans from the field.
- Inspect high-resolution details.
- Add comments or annotations to your photos.
- Share photos with the entire project team or specific people.
- View your hi-res, live streaming webcams.

**A RESOURCE  
AT YOUR  
FINGERTIPS**





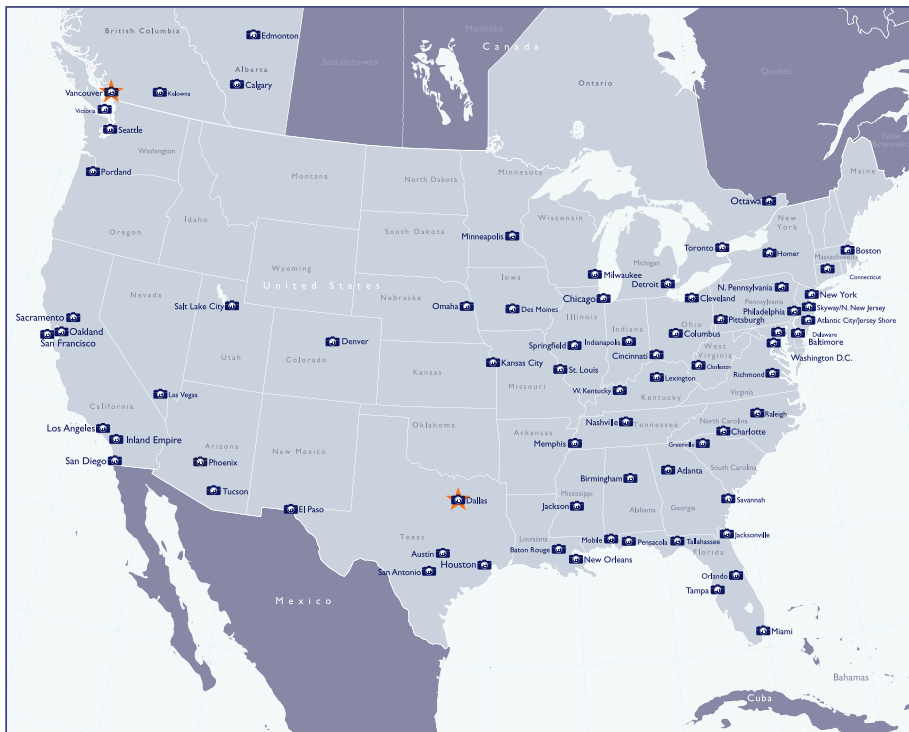
# LOCAL EXPERTISE & SUPERIOR SERVICE

## Boots On The Ground

Built from the ground up by construction professionals, Multivista's local expertise and superior service is designed to accommodate the specific needs of the construction and facilities management industries around the globe.

- We operate locally alongside client teams in all our locations across North America, Europe, Central / South America, Australia, China and the Middle East.
- We train clients—in person, on site—to use our software and solve real problems, from the project trailer to the corporate offices. We help client teams solve real problems by providing system training whether in the project trailer or the corporate offices.

### NORTH AMERICA



### CENTRAL AMERICA



### CHILE



### EUROPE



### MIDDLE EAST



### CHINA



### AUSTRALIA

