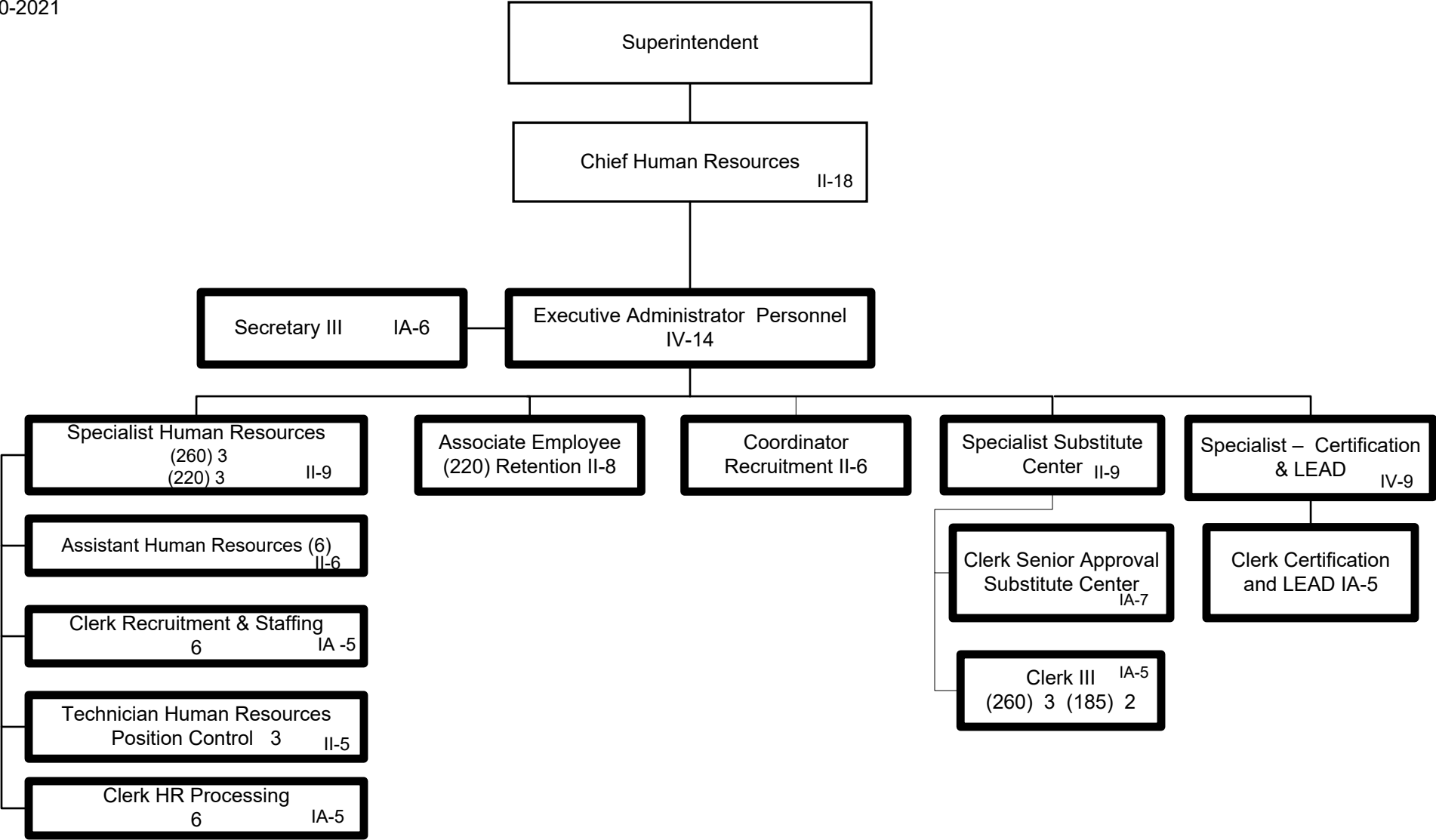


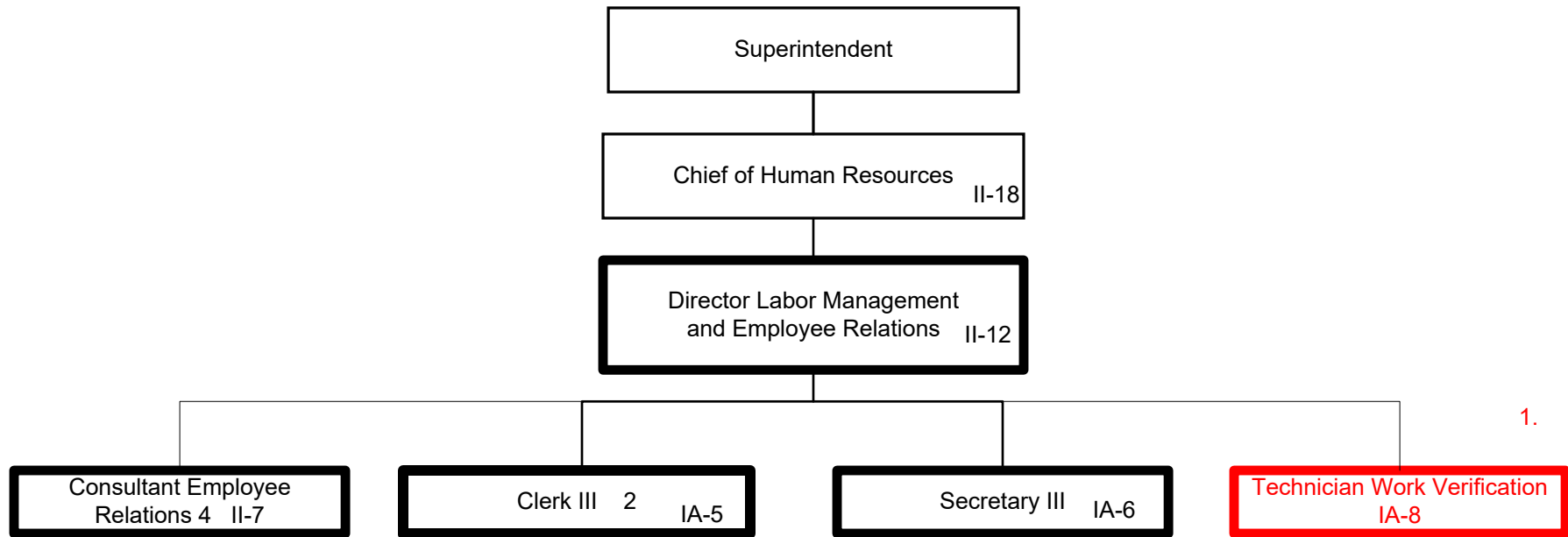
Summary:

General Fund Positions: 41–40
Categorical Fund Positions: 0



Summary:

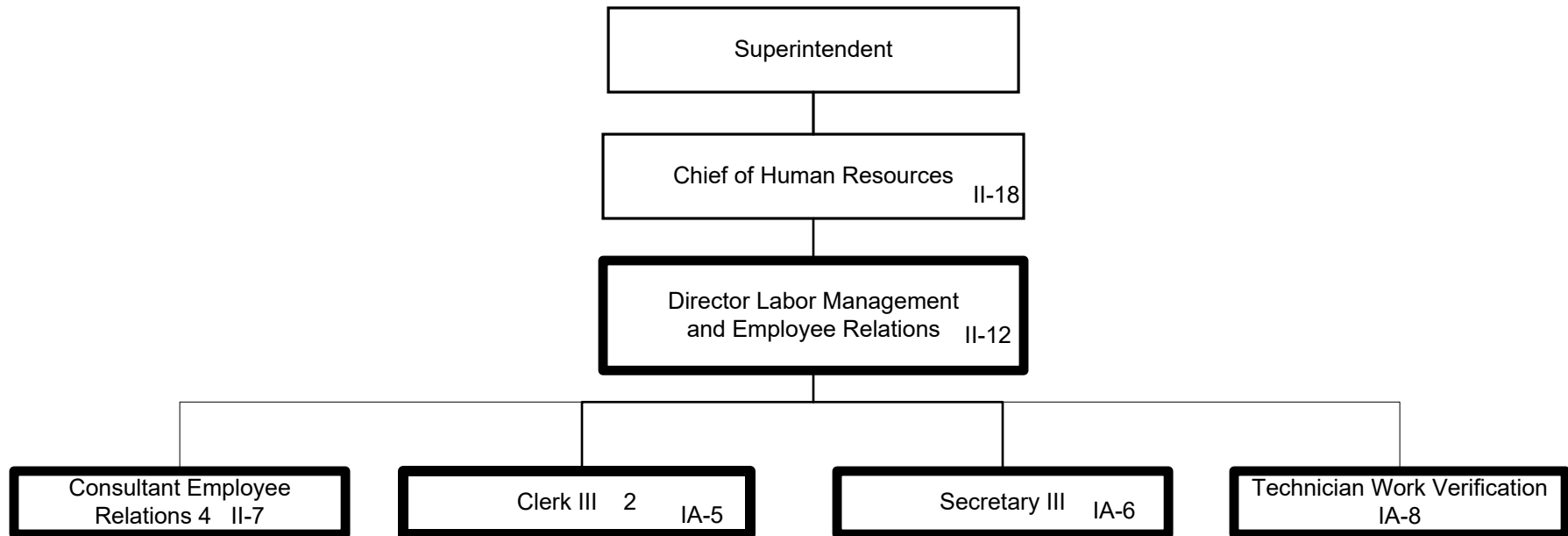
General Fund Positions: 40
Categorical Fund Positions: 0



1. Moved from CT1, Human Resources
Personnel Services

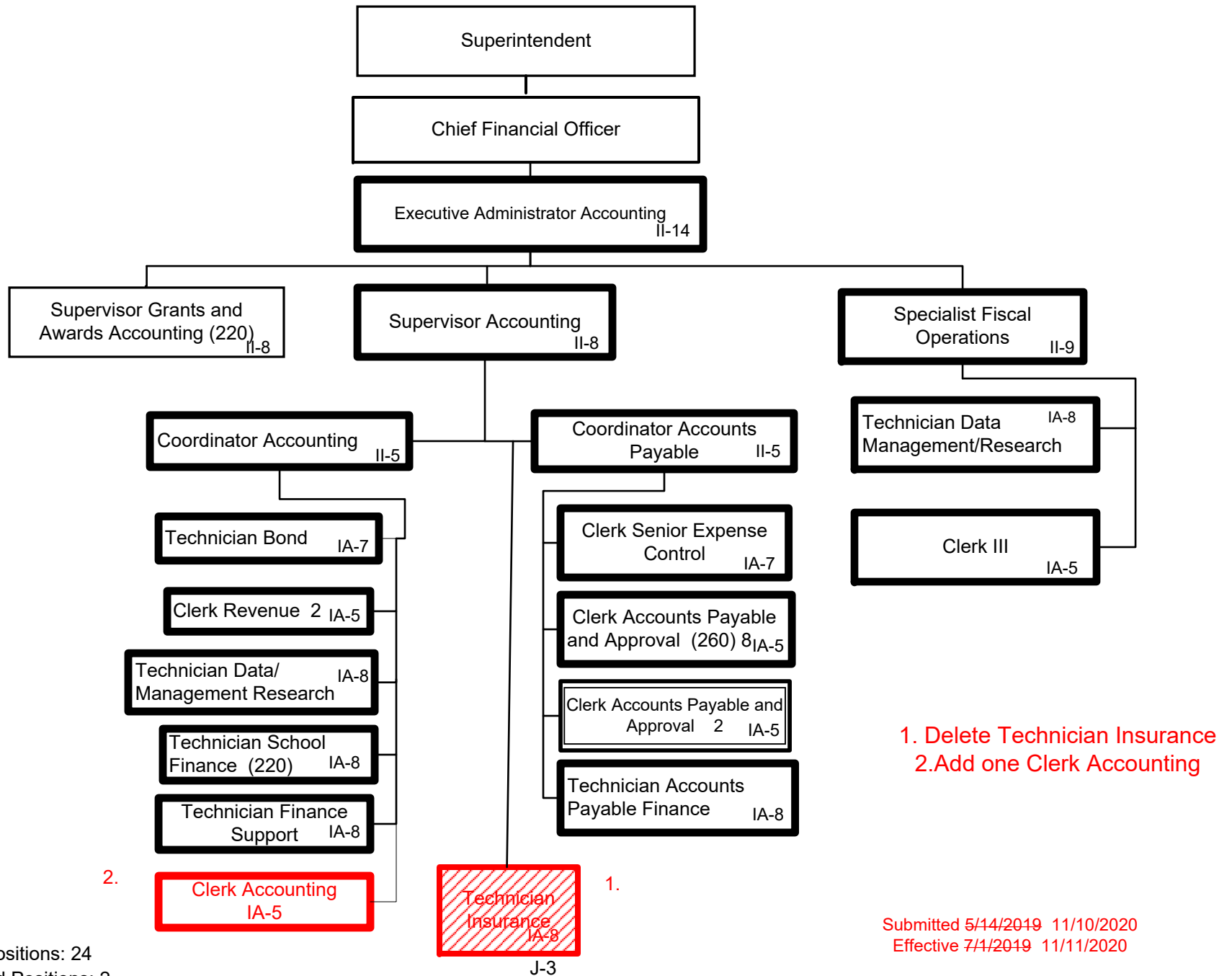
Summary:

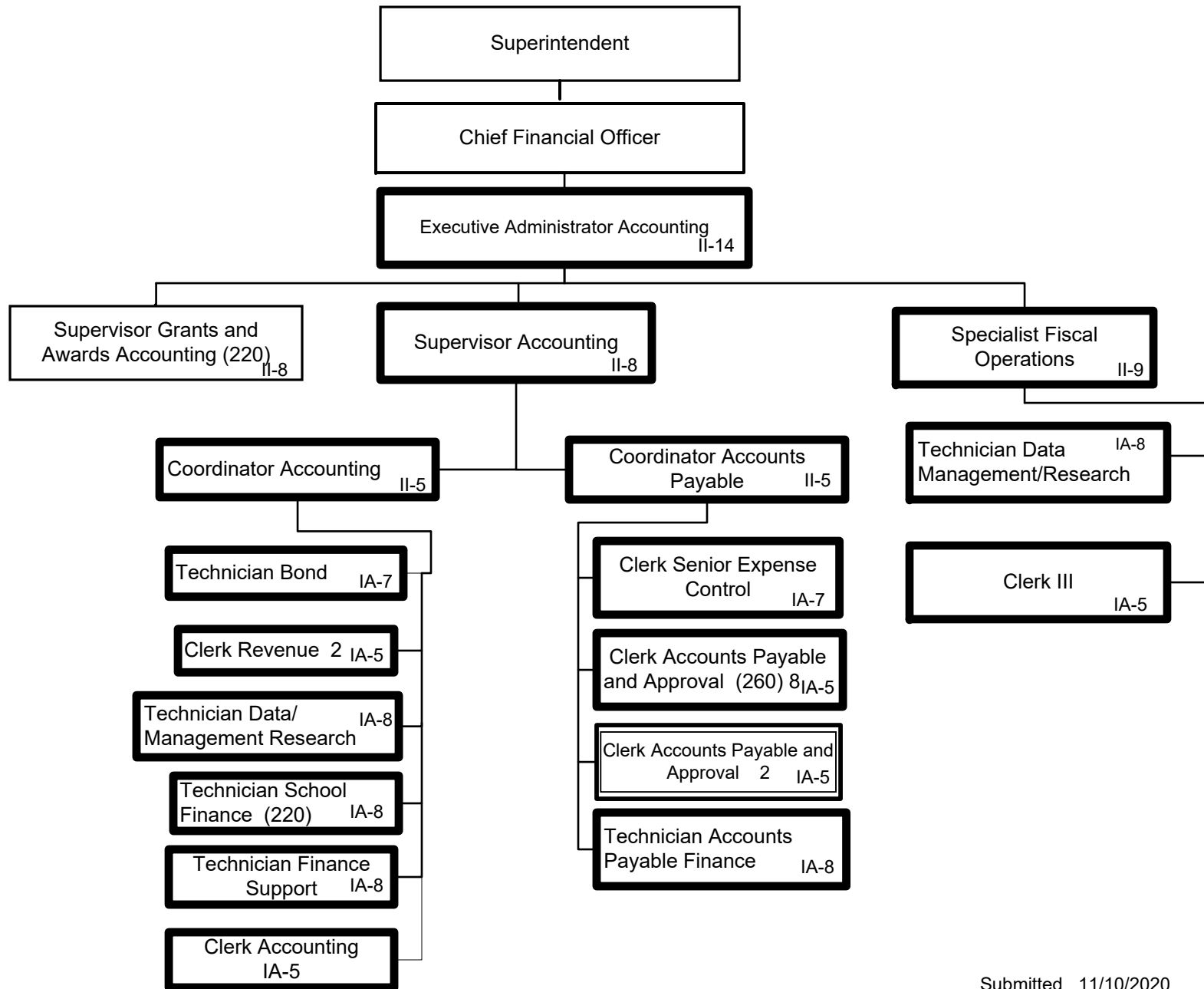
General Fund Positions: 8- 9
Categorical Fund Positions: 0



Summary:

General Fund Positions: 9
Categorical Fund Positions: 0





Summary:

General Fund Positions: 24
Categorical Fund Positions: 2