



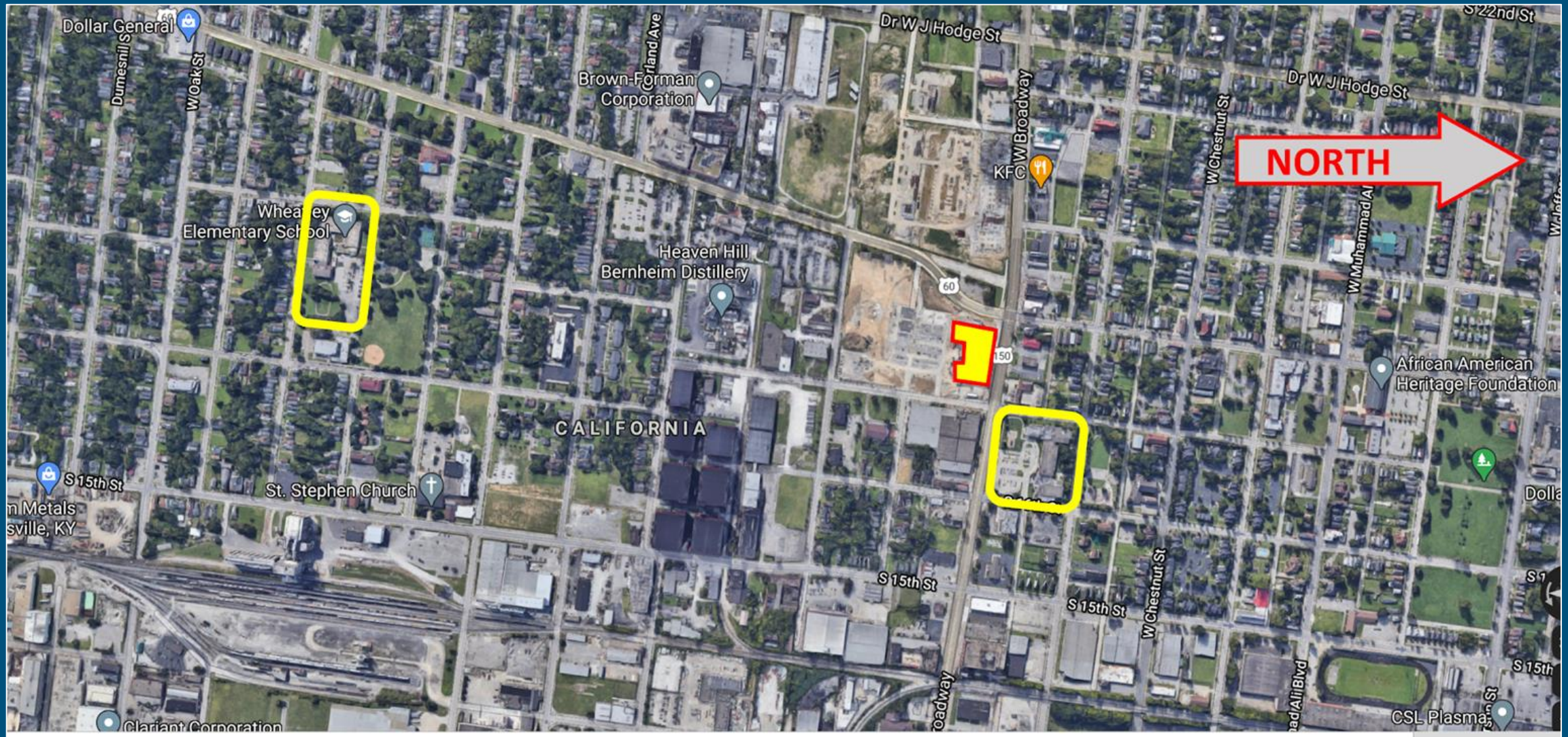
# WEST BROADWAY ELEMENTARY SCHOOL



Jefferson County Public Schools

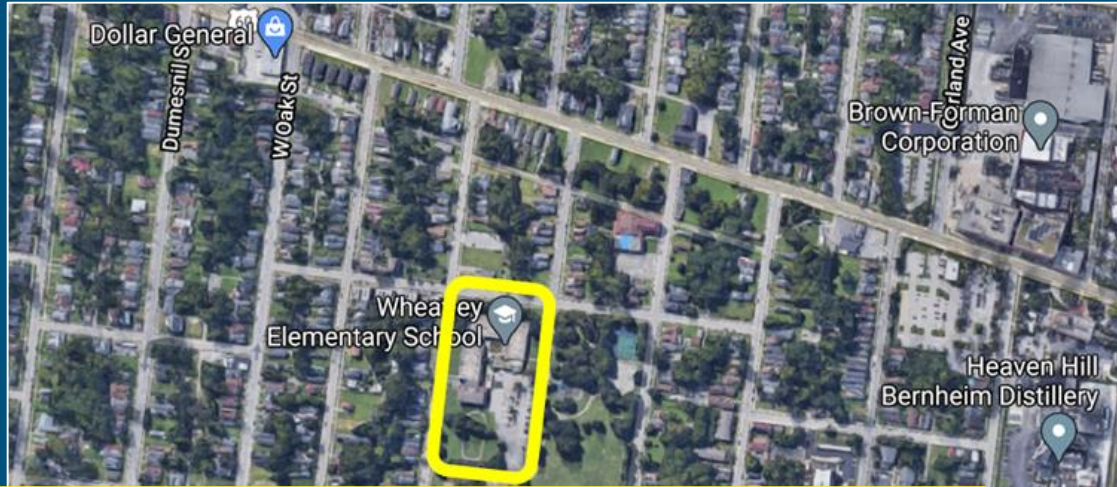


# Site of Wheatley, Roosevelt-Perry, and New YMCA 1720 West Broadway



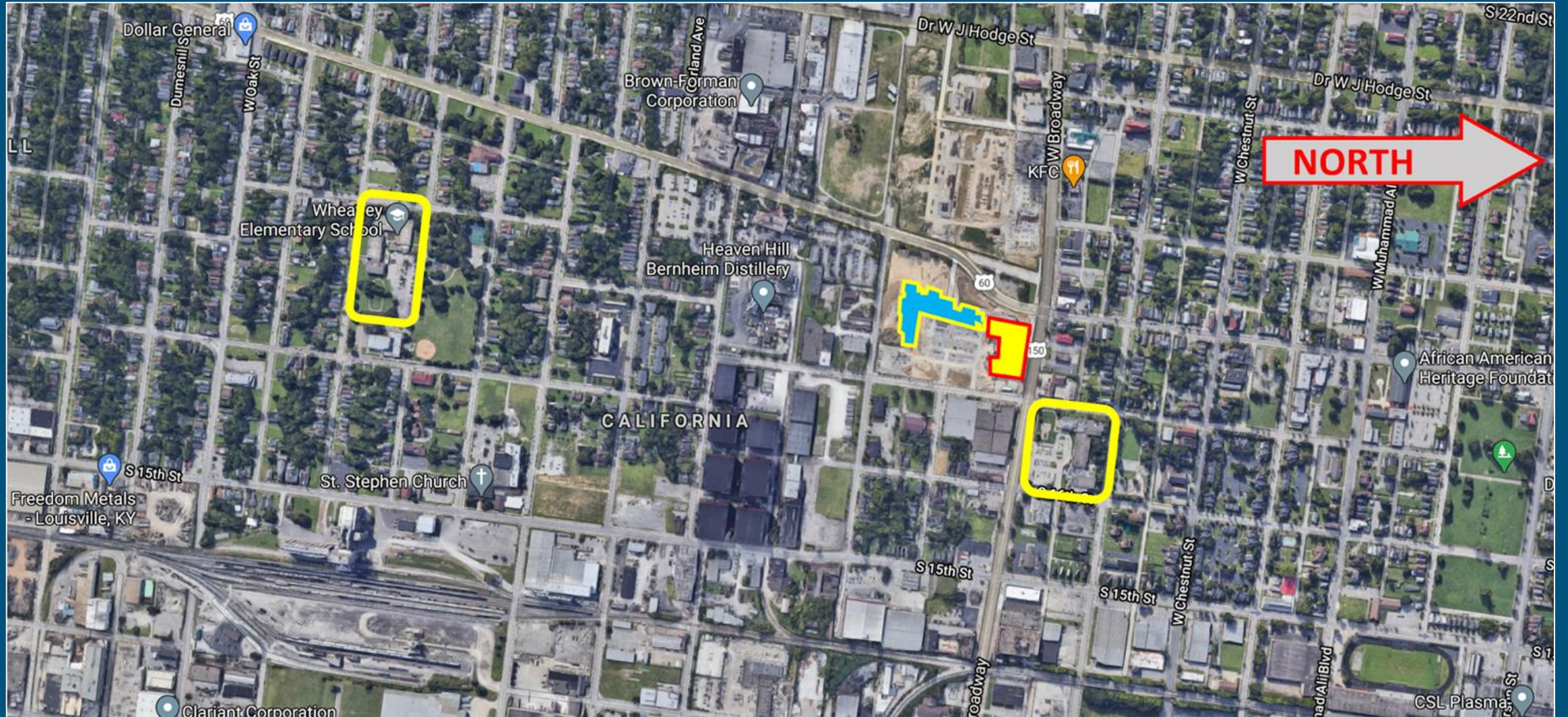


# Republic Bank Foundation YMCA





# New Proposed Site of Elementary School





# Site of Elementary School Building and Parking Lot

Front  
Entrance  
to School

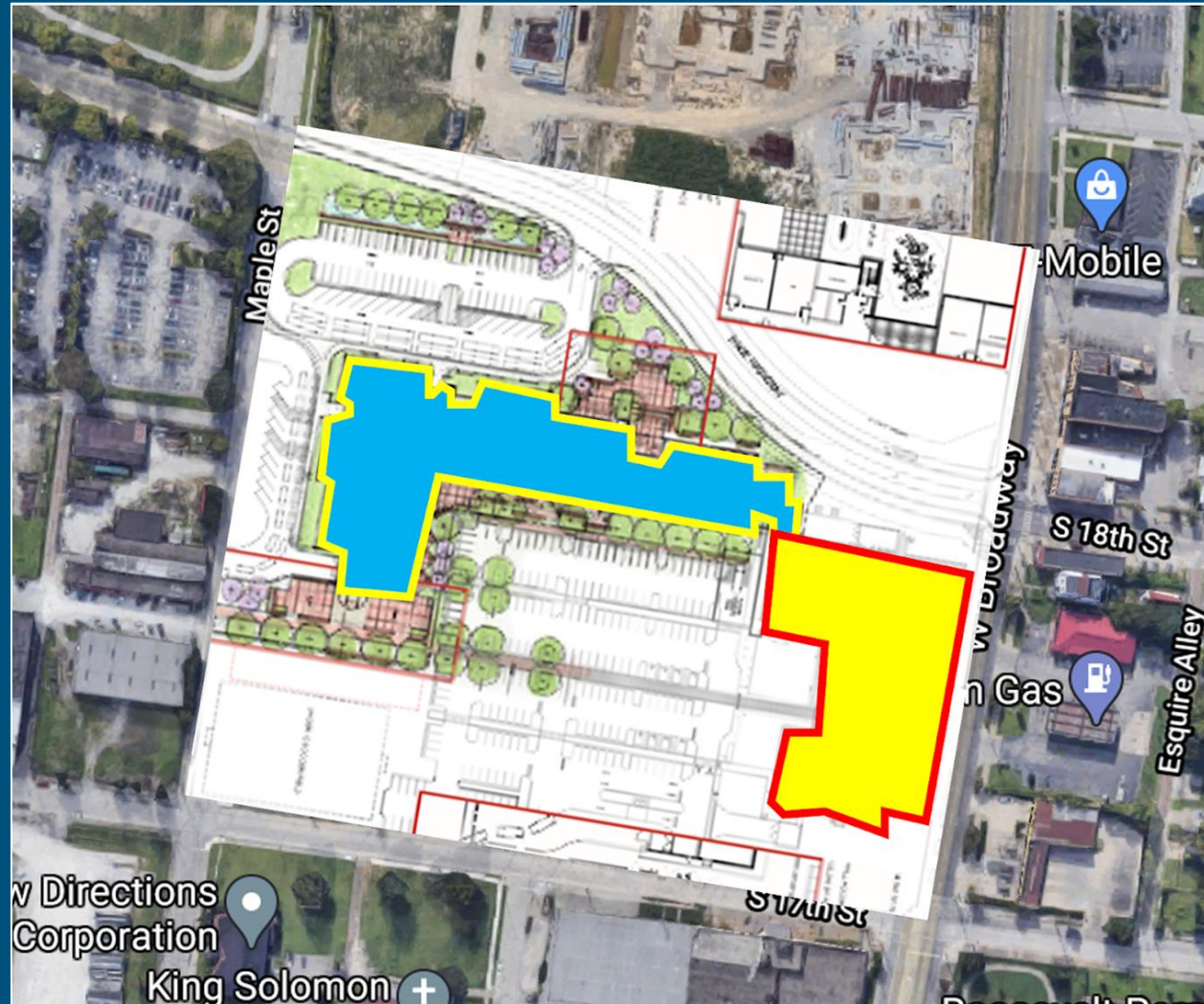


Access  
to YMCA  
Facilities





# With Architectural Renderings of Site





# Architectural Drawing



# 1st & 2nd Floor Plans

## Blue - Classrooms

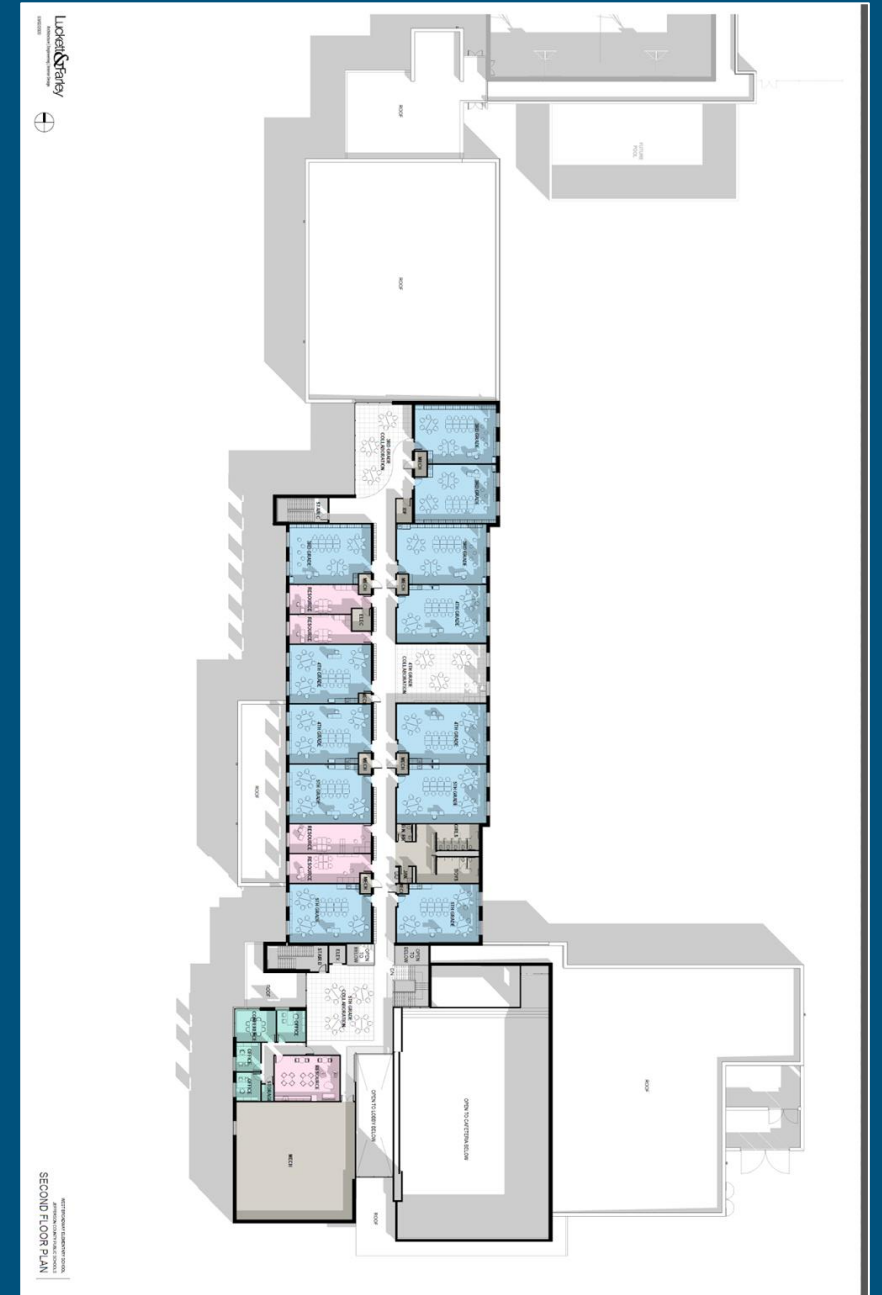
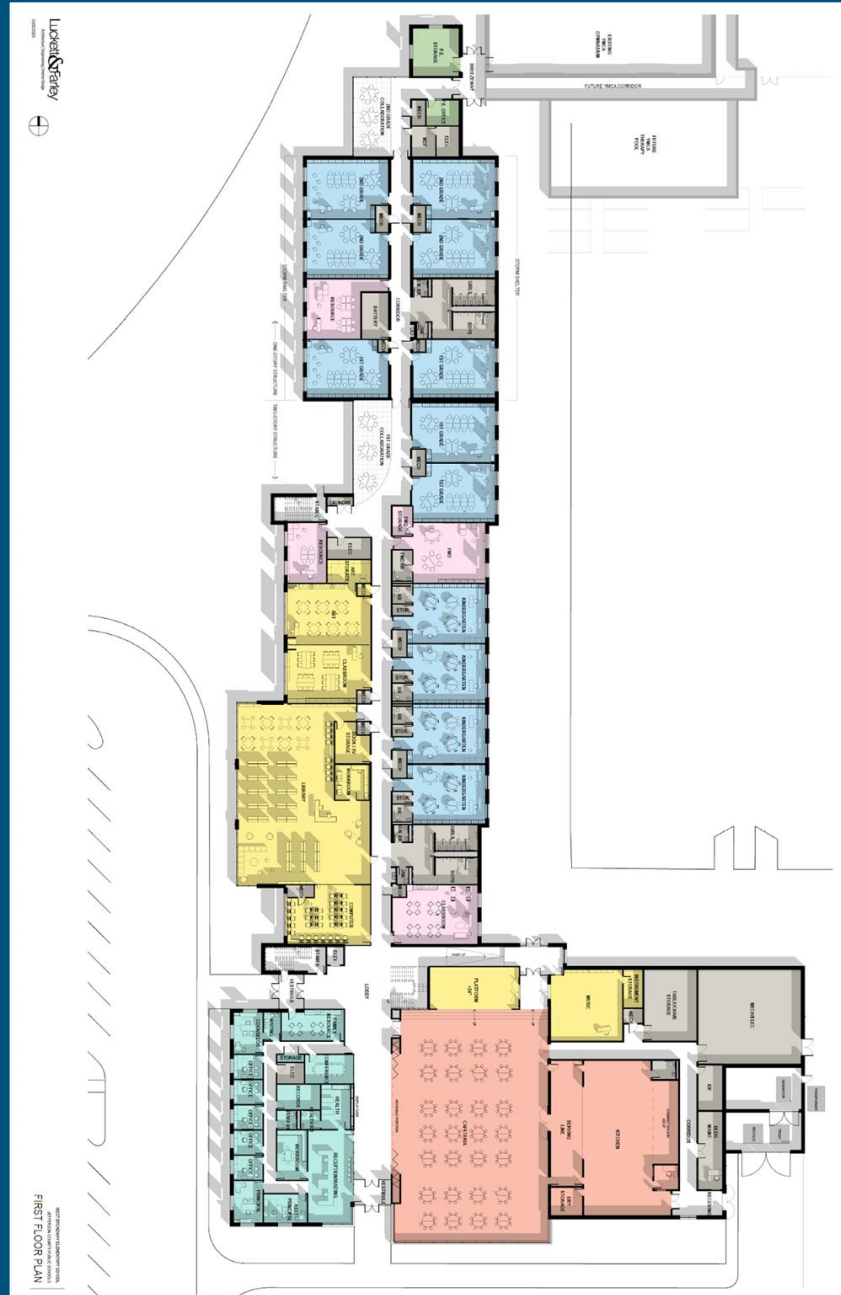
## Pink - Resource Rooms

Green - Conference,  
Office Space, Storage,  
Reception Area, FRC

## Peach - Cafeteria & Kitchen

## Yellow - Library, Art, Computer, Music, Stage/Platform

## Gray - Mechanical





# The View from 18th Street





# The View from Maple Street



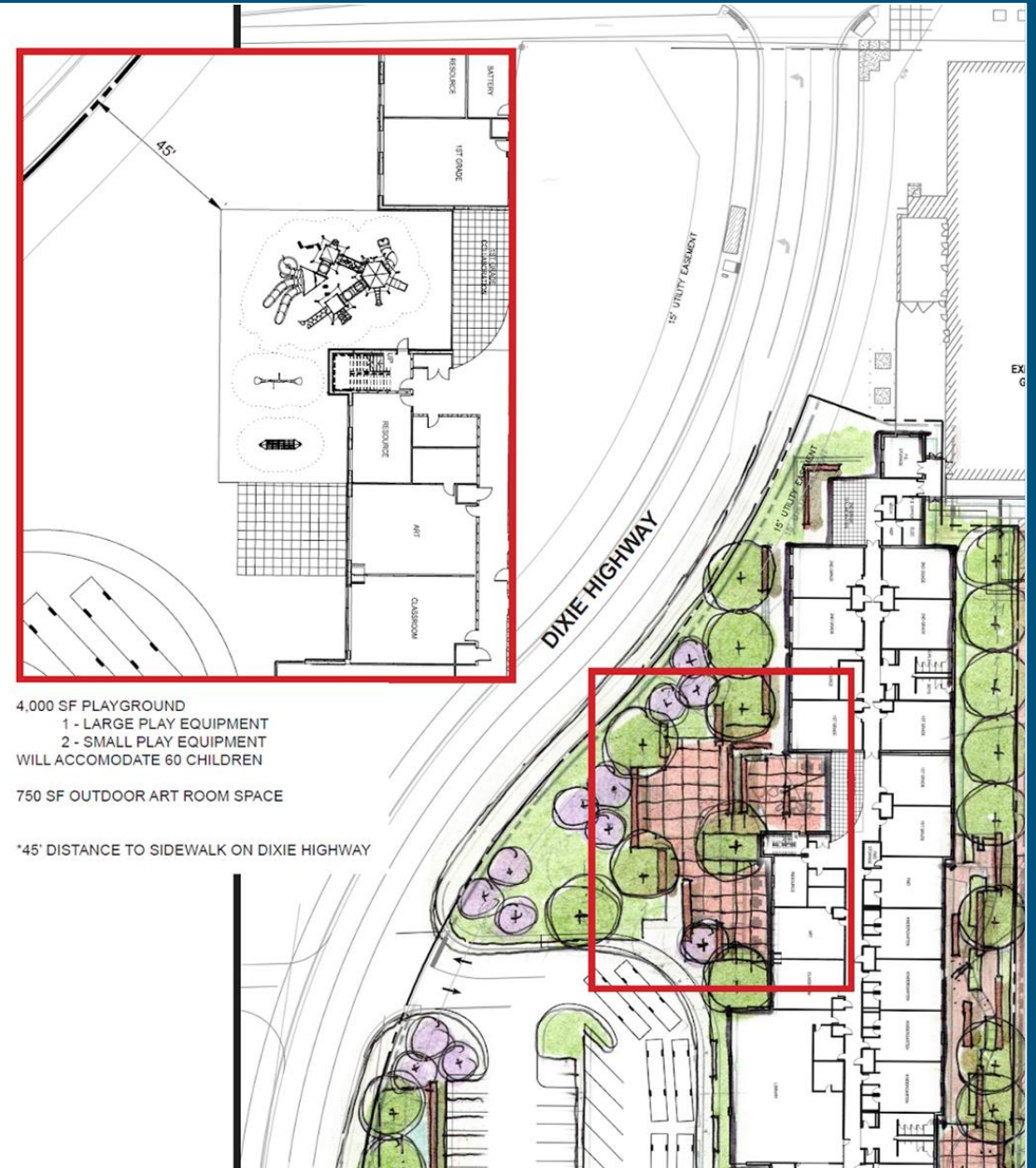


# The Cafeteria





# Playground Area





# Outdoor Learning Spaces





# Projected Timeline

Item	Tentative Time of Completion	Status
District Facility Plan Revision	Complete	✓
KY School Board Approval	Complete	✓
Architect/Engineer Selection	Complete	✓
BG-1 submitted to JCPS Board of Education	10/20/20	✓
Property Purchase Submitted to KDE upon	10/20/20 pending JCPS BoE Approval	
Design	Ongoing until bid	
Schematic Designs Approved by KDE	End of November 2020	
Design Development Plan Approved by KDE	January 2021	

Item	Tentative Time of Completion	Status
Louisville Planning and Zoning Approval	March 2021	
Construction Documents Approved by KDE	May 2021	
Advertisement for Construction Bid in Courier Journal	May 2021	
Bids Open for Construction Contract	June 2021	
JCPS Bid Approval	June 2021	
Construction Begins	July 2021	
Substantial Completion	December 2022	
Furniture Delivery and Set-up	November-December 2022	
School Opens for Students	January 2023 (or August 2023)	



# Questions and Feedback