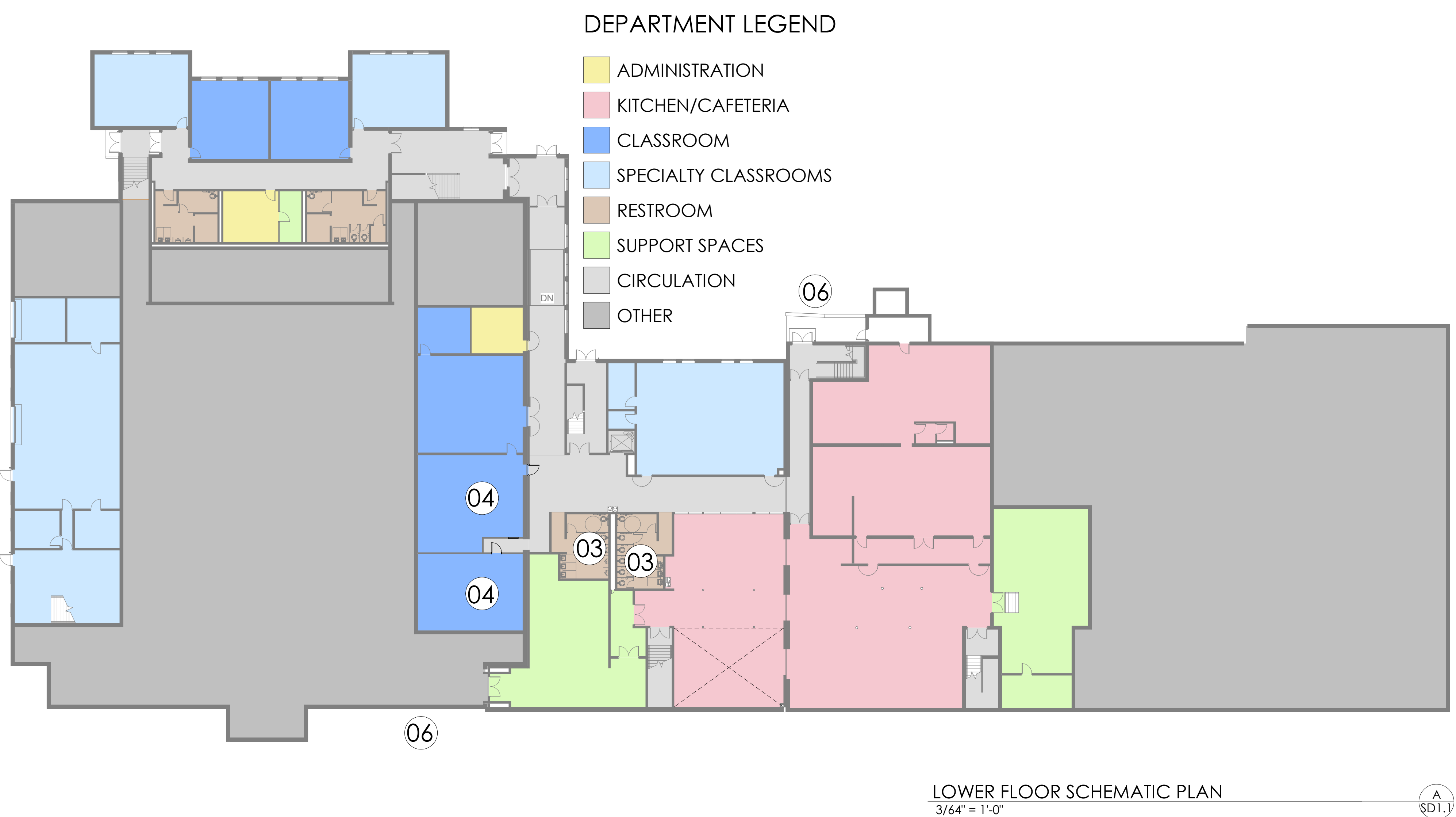
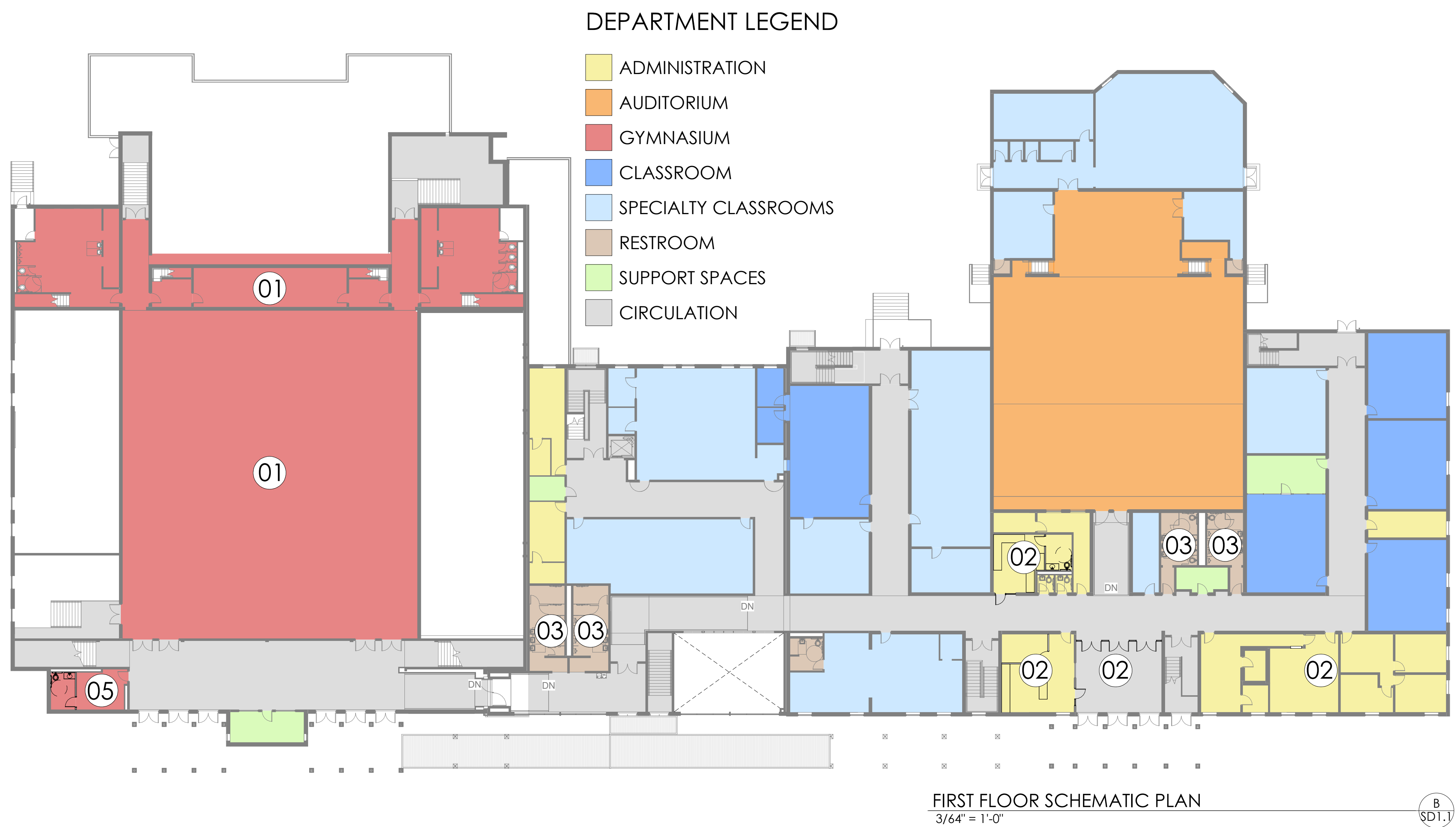
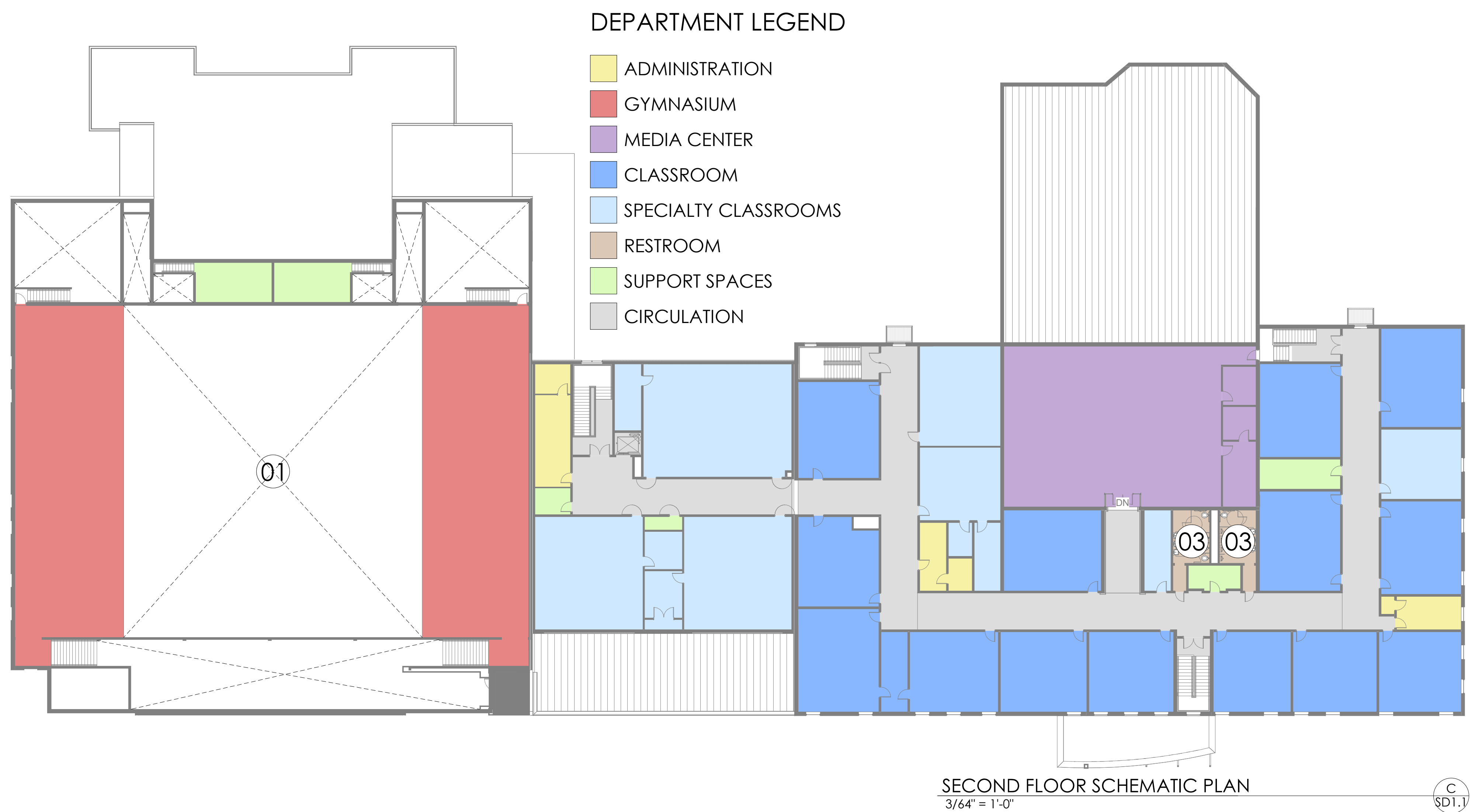


06 SITE IMPROVEMENTS

- REPAIR/REROUTE SEWER LINE
- REPAIR RETAINING WALL





**ATHLETIC STADIUM (FOOTBALL, SOCCER, TRACK) SCOPE:**

MASS GRADING/SITE PREPARATION:

- FOOTBALL/SOCCER/TRACK FACILITY
- INCLUDES DEMOLITION, EARTHWORK & STORM SYSTEM REMEDIATION
- NEW ARTIFICIAL TURF FIELD, (8) LANE TRACK, FIELD EVENTS
- NEW CONCRETE WALKS AND PLAZAS WITH FENCING & GATES.
- ADDITIONAL PARKING, BOTH VENUES

FIELD LIGHTING:

- (4) NEW LIGHT POLES

GRANDSTANDS W/ PRESS BOX:

- HOME SEATING 1,500
- VISITOR SEATING 500

TENNIS COURTS WITH LIGHTING:

- 4 COURTS, EXISTING LOCATION
- 4 LIGHT POLES
- ATHLETIC EQUIPMENT STORAGE

LOCKER ROOM ADDITION / RENOVATION:

- 4,860 SF; 74% EFFICIENCY
- RENOVATION OF EXISTING HS FOOTBALL LOCKER ROOM FOR MS FOOTBALL
- NEW HS FOOTBALL LOCKER ROOM ADDITION
- (2) ADDITIONAL LOCKER ROOMS

AGRICULTURE BUILDINGS DEMOLITION:

- ESTIMATE 4,000 SF

**BASEBALL AND SOFTBALL FACILITIES SCOPE:**

MASS GRADING/SITE PREPARATION:

- NEW CONCRETE & ACCESS GATE/FENCING
- NEW ACCESS ROAD IMPROVEMENTS

PRESS BOX/RESTROOM/CONCESSION STAND:

- ONE AT EACH BASEBALL / SOFTBALL VENUES

HOME DUGOUTS, BASEBALL & SOFTBALL:

- ONE AT EACH BASEBALL / SOFTBALL VENUES

VISITOR DUGOUTS, BASEBALL & SOFTBALL:

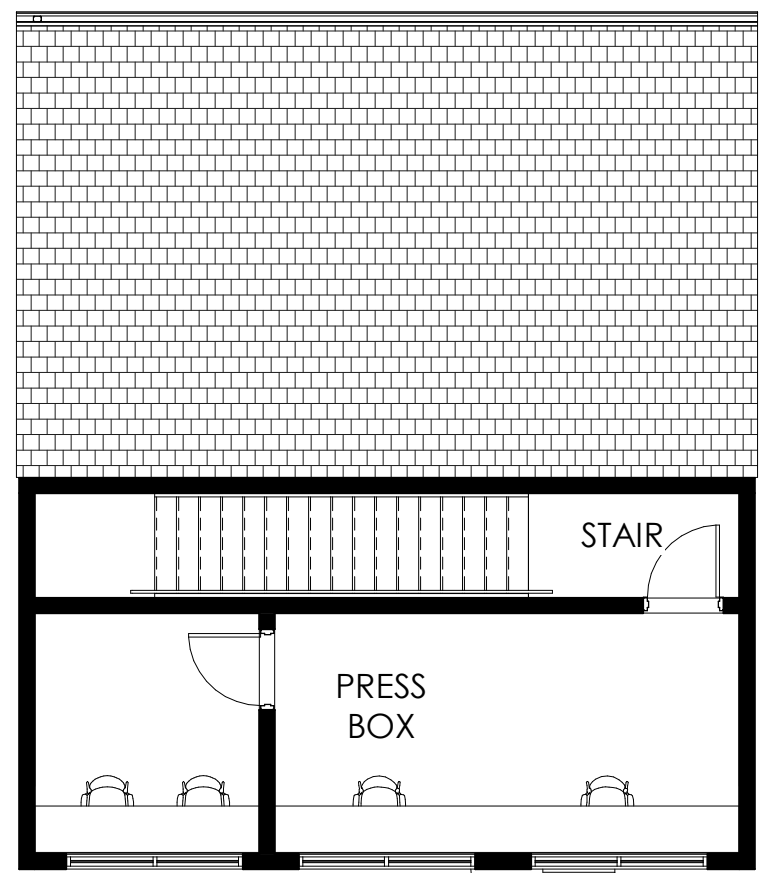
- ONE AT EACH BASEBALL / SOFTBALL VENUES

NEW SANITARY LINE TO FIELD VENUES

(POSSIBLE ALTERNATE) SCOREBOARD,

BASEBALL & SOFTBALL:

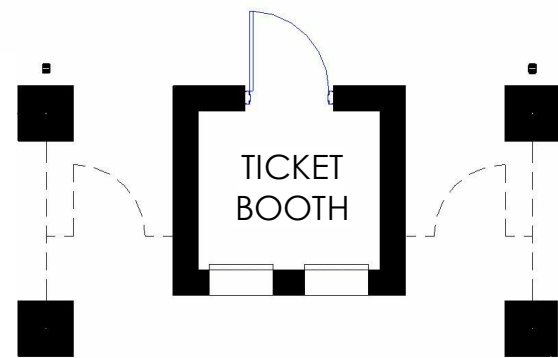
- ONE AT EACH BASEBALL / SOFTBALL VENUES



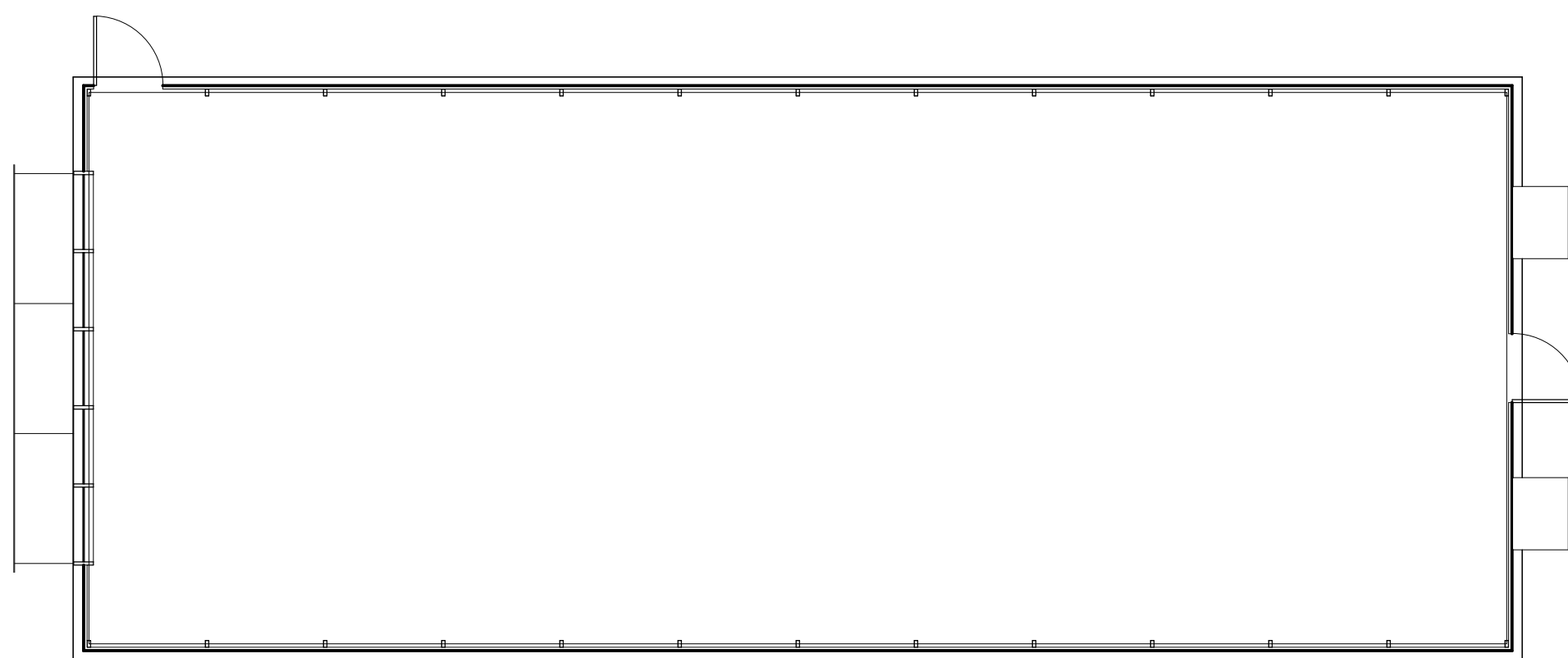
UPPER LEVEL PLAN - PRESSBOX  
1/8" = 1'-0" SD1.2



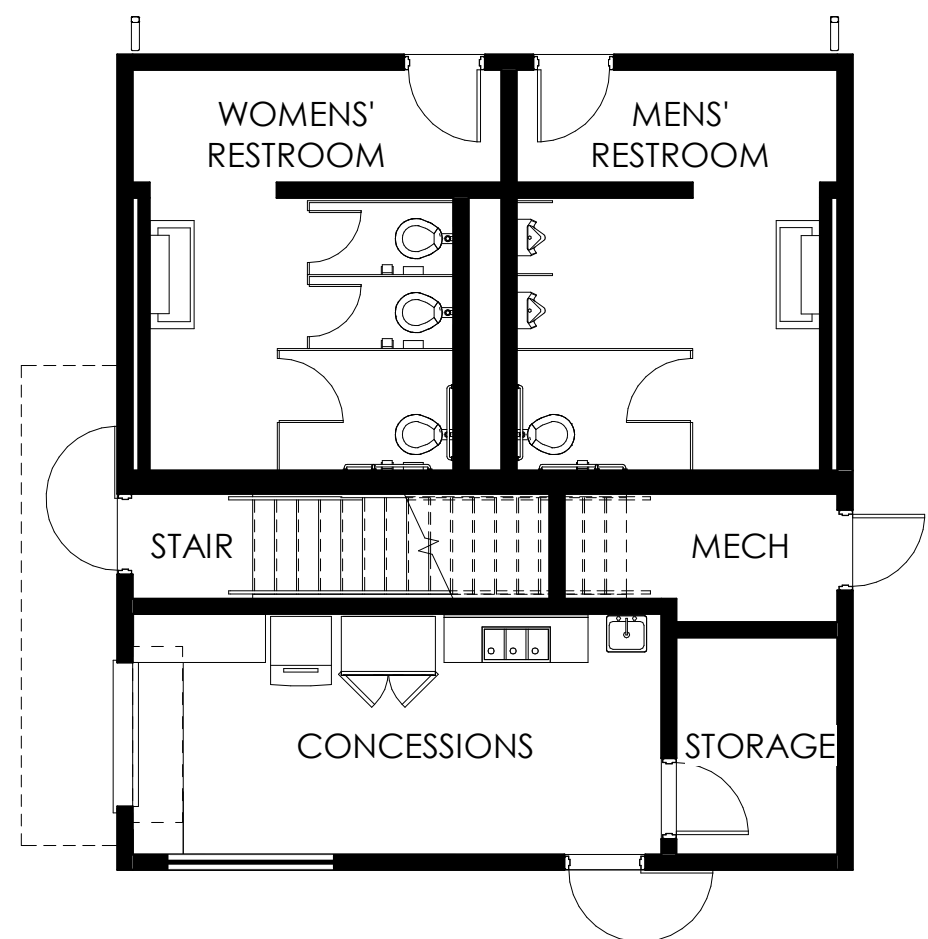
TICKET SHELTER  
1/8" = 1'-0" SD1.2



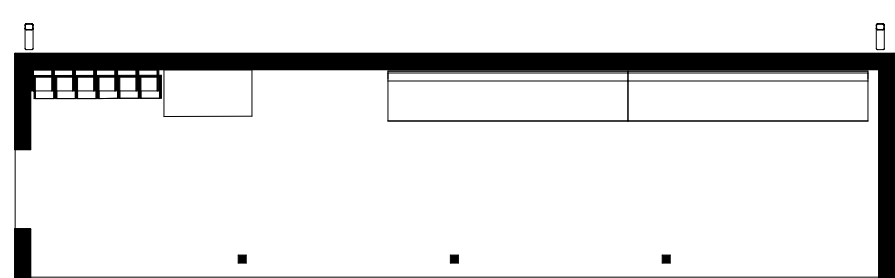
TICKET BOOTH PLAN  
1/8" = 1'-0" SD1.2



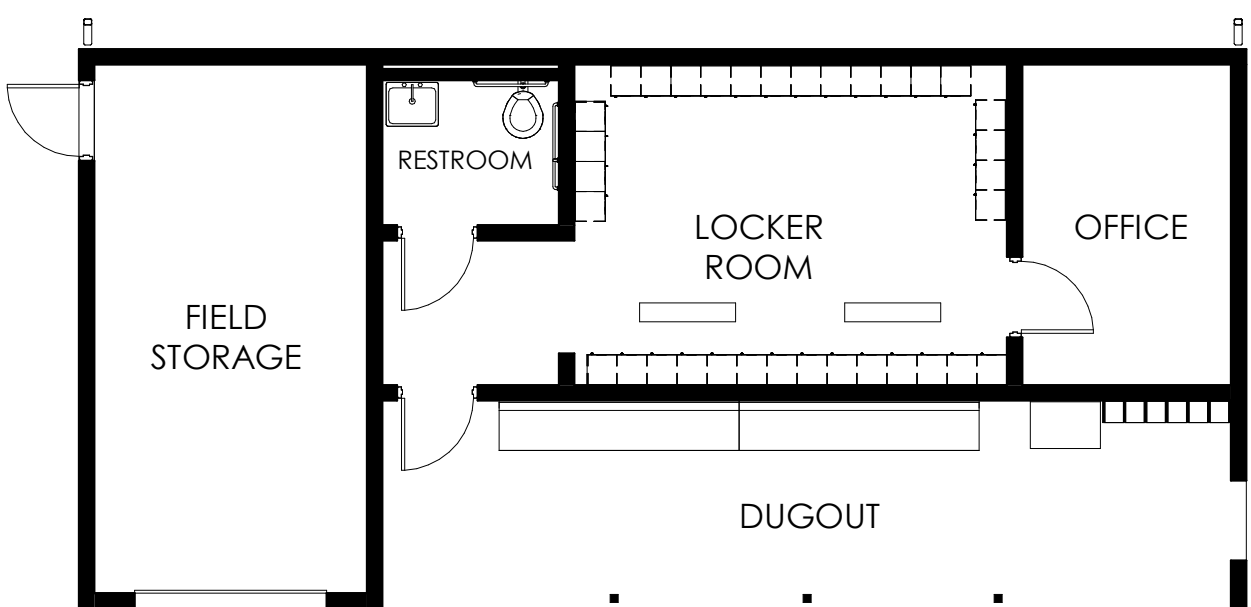
GREENHOUSE PLAN  
1/8" = 1'-0" SD1.2



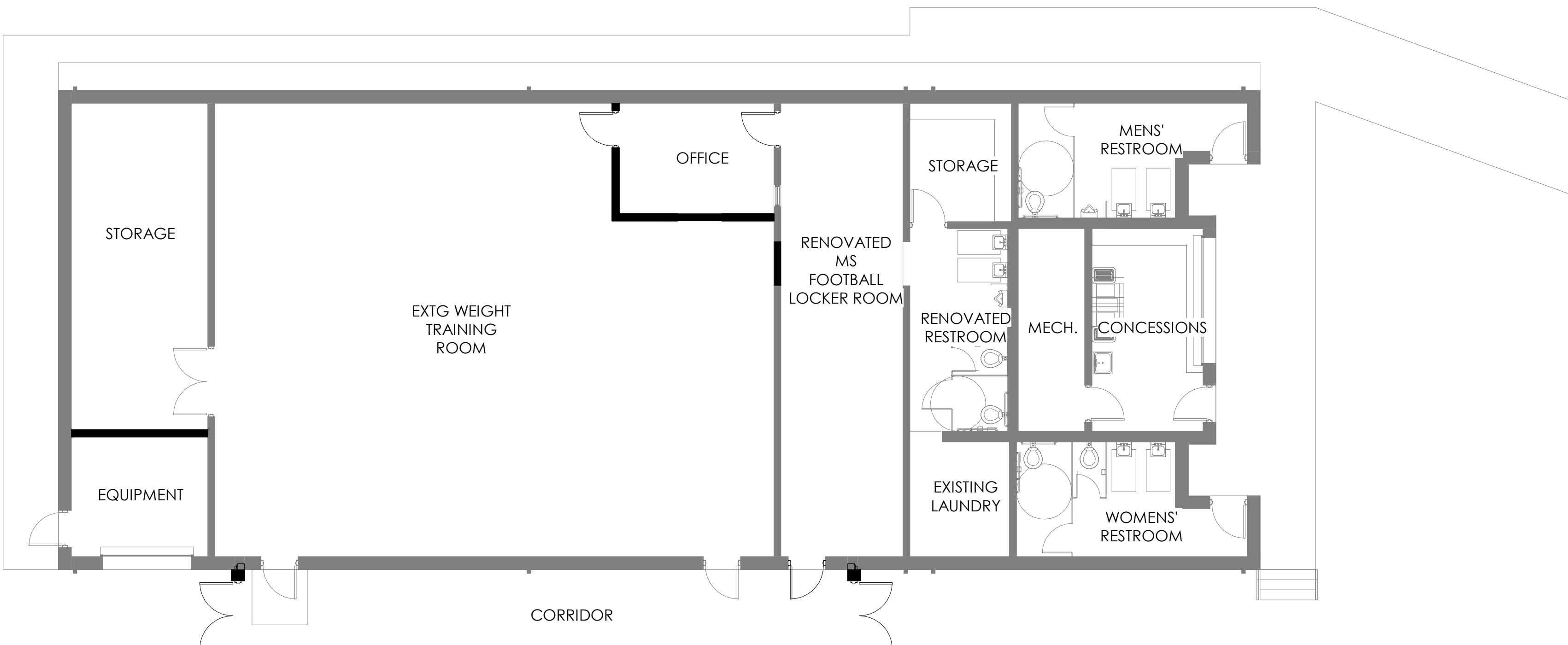
GROUND LEVEL PLAN - PRESSBOX  
1/8" = 1'-0" SD1.2



VISITOR TEAM DUGOUT TYP PLAN  
1/8" = 1'-0" SD1.2



HOME TEAM DUGOUT TYP PLAN  
1/8" = 1'-0" SD1.2



SD FIELD HOUSE LAYOUTS  
1/8" = 1'-0" SD1.2

