

1.

Executive Administrator
ESL/Academic Support
Programs and Special
Populations IV-14

Director ESL
IV-12

2.

1.

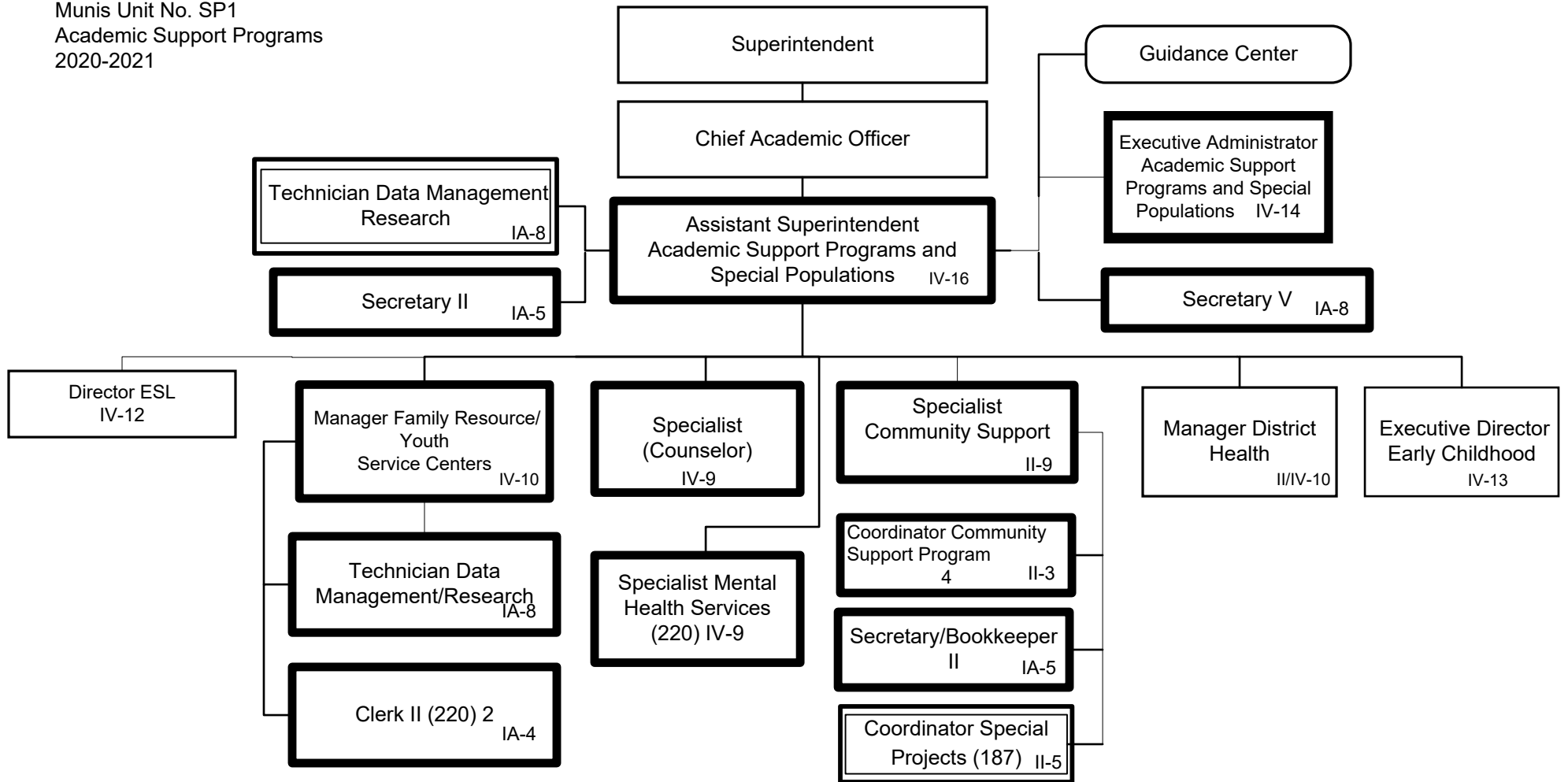
1. Change reporting relationship to Assistant Superintendent Support Programs and Special Populations and remove ESL from title

2. Add Director ESL IV-12

Summary:

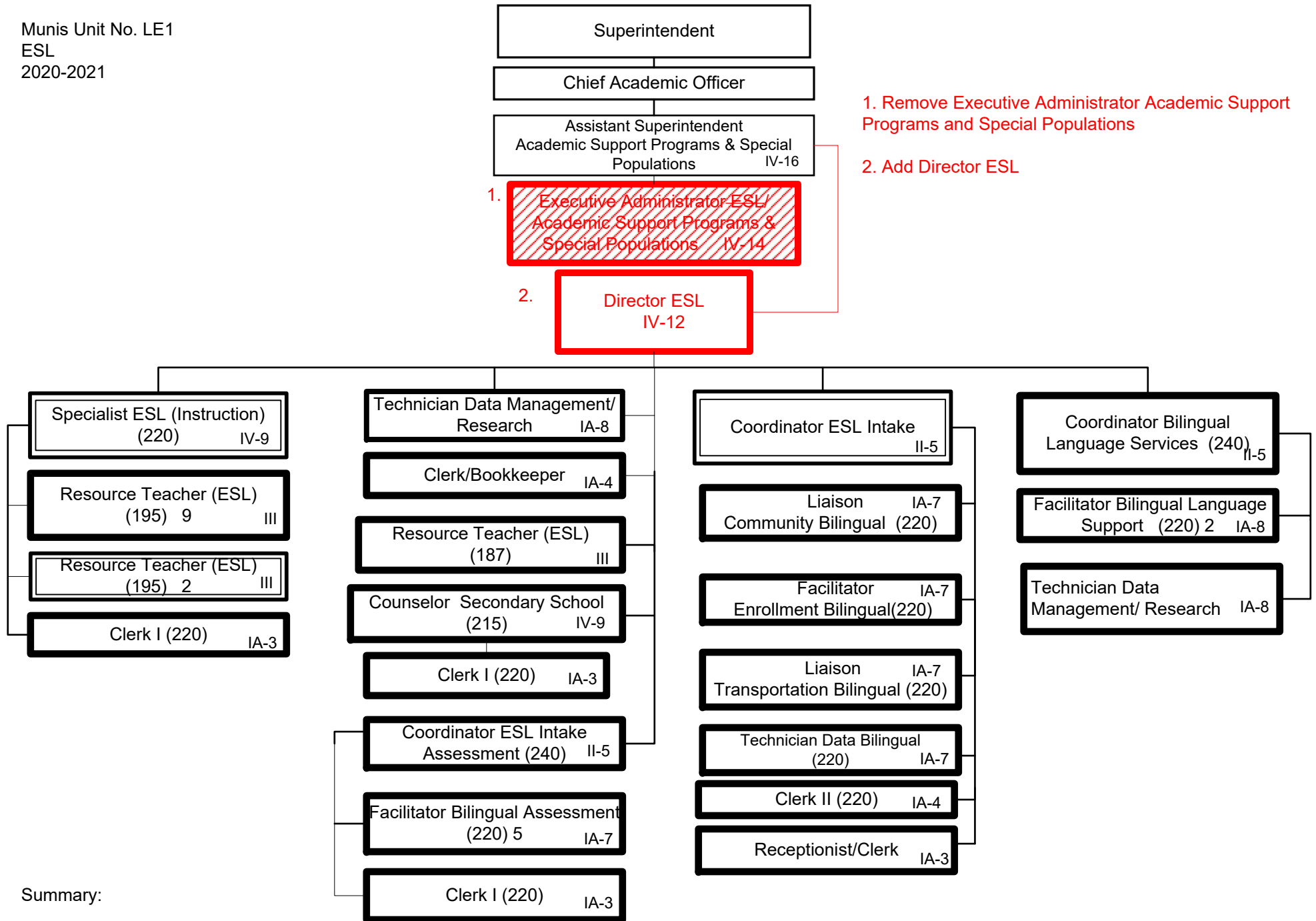
General Fund Positions: -14 15

Categorical Fund Positions: 2



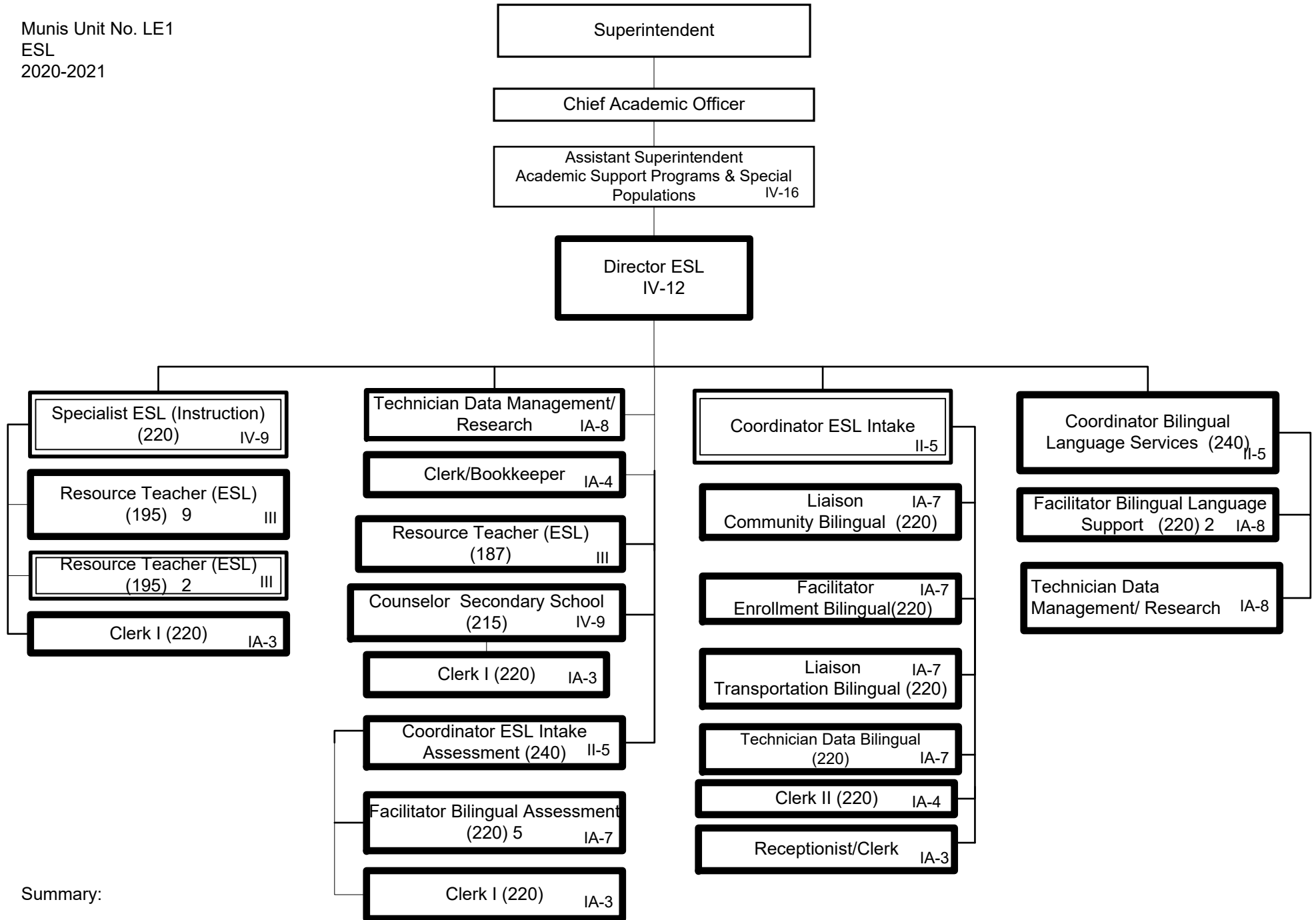
Summary:

General Fund Positions: 15
Categorical Fund Positions: 2



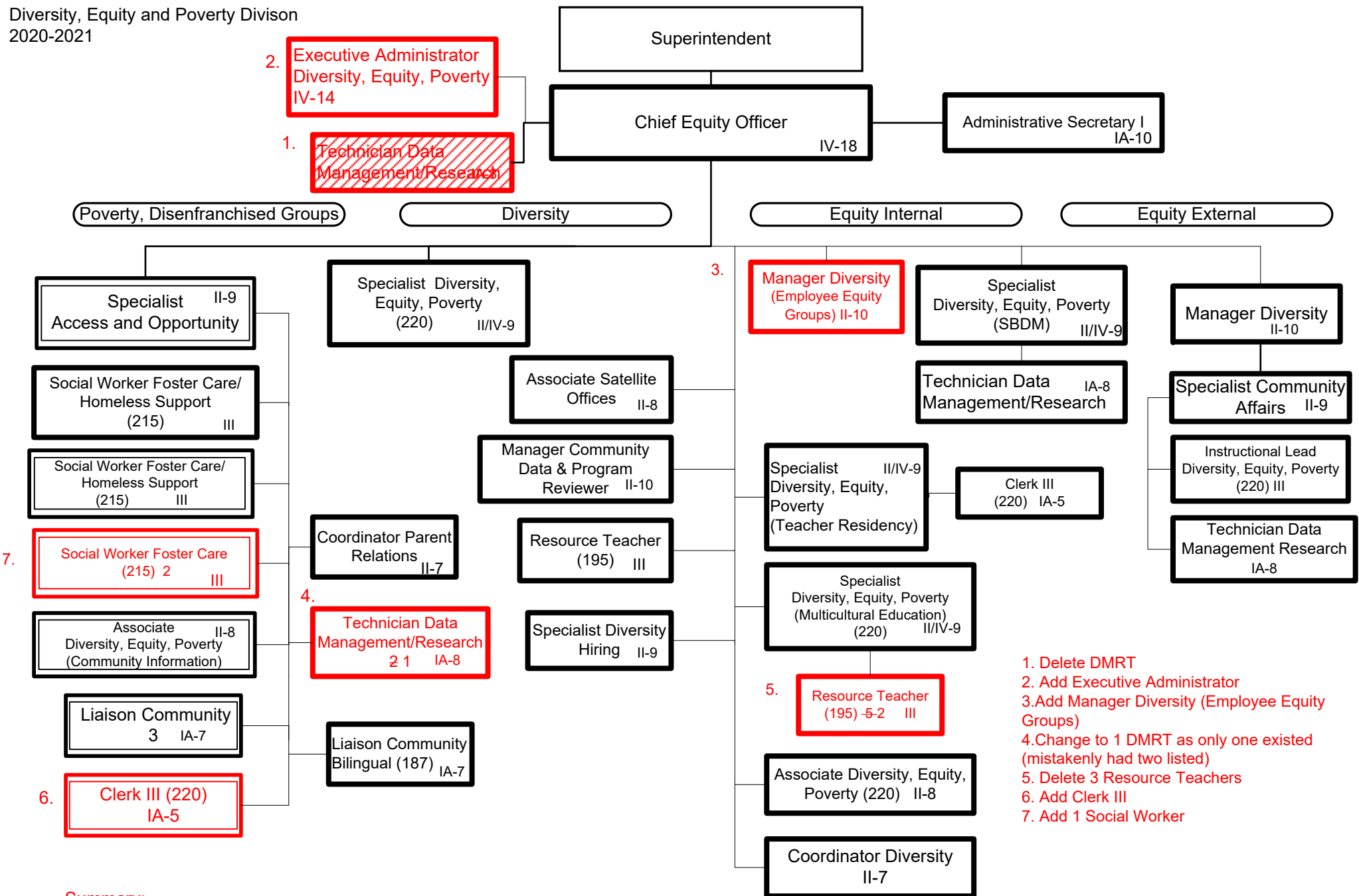
Summary:

General Fund Positions: 33
Categorical Fund Positions: 4



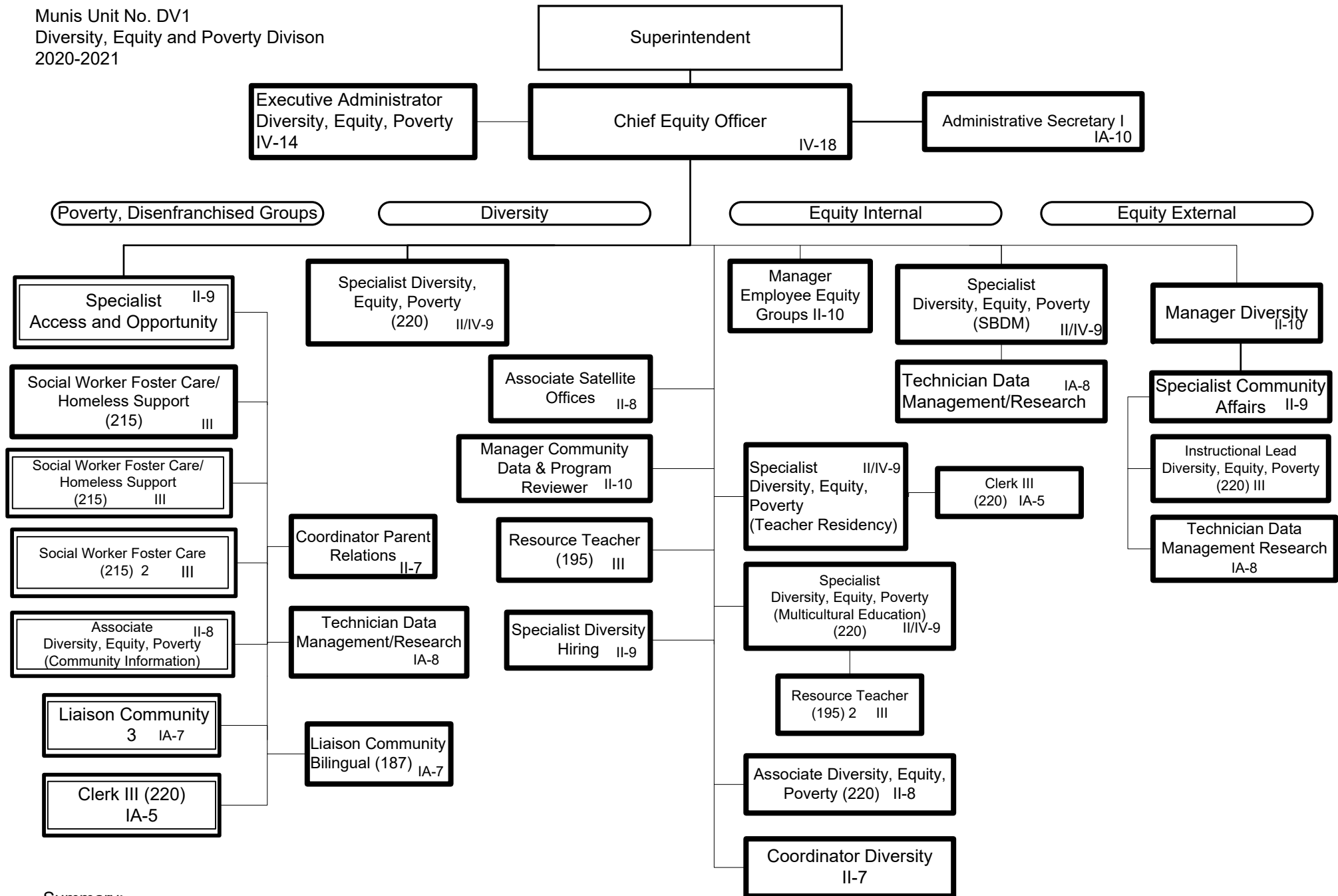
Summary:

General Fund Positions: 33
Categorical Fund Positions: 4



General Fund Positions: 28 26
Categorical Fund Positions: -7 9

Submitted 06/09/2020 9/29/2020
Effective -07/1/2020 9/30/2020



Summary:

General Fund Positions: 26
Categorical Fund Positions: 9