



FIELD OBSERVATION REPORT

East Hardin Middle School, Hardin County Schools, Elizabethtown, KY 201752.01 - CA8

Date: 9/03/2020

Time: 9:00 AM ET

Weather: 80/Overcast/drizzle

Observed by: Joseph Jones

Report No: 31

Est. Completion: 67%

Present on Site:

Doyle Gibson, General Trades, Masons, Roofers, HVAC Installers, Electricians, Fire Suppression System Installers

1. Work in Progress

- a. General Trades were installing hollow metal frames ahead of masonry work.
- b. Masons were laying block in Area B at the gabled end of the classroom wing and in the area next to Area C. They were also laying brick at the administrative area.
- c. Roofers were installing sheet metal roofing.
- d. HVAC installers were installing ductwork and heat pumps on the mechanical platform around the Gym.
- e. Electricians were installing conduits in block walls as they were being laid by masons. There were pouring concrete housekeeping pads in the Mechanical Room.
- f. Fire suppression system installers were installing rough-ins in the Cafeteria.

2. General Observations

- a) The weather was warm and drying after a night of rain. The site was muddy. The weather next week is expected to be warm with thunderstorms possible on some days.

The masons were laying block in Area B next to Area C and were completing the gabled end of the classroom wing. They were also laying brick around the administrative wing. They had begun laying block walls around the Library/Media Center based on the instructions from Icon Engineering.

The general trades contractor continues to set hollow metal frames, install temporary railings and window coverings and provide general cleaning of the building.

Roofers were installing the standing seam metal roofing over gabled roof at Area D.

The HVAC installers were placing the heat pumps on the mechanical platform around the Gym and leading to the Mechanical Room. They are beginning to install ductwork at these units.

Electricians were installing conduits as block walls were laid. They continue to install conduits in the first floor of the classroom wings and the second floor ahead of the blockwork. They were pouring concrete housekeeping pads in the Mechanical Room.

JRA Architects

3225 Summit Square Place, Suite 200 Lexington, KY 40509
Tel: 1-859 252-6781 Fax: (859) 255-5483 www.jrarchitects.com

The plumbers have been installing the overhead domestic water piping in the classroom wings on the first floor.

HVAC installers have been installing ductwork on the first floor in the classroom wings.

Fire suppression system installers were roughing in piping on the first floor.

- b) The three classroom wings are approaching top of wall heights with the wing in Area B at the back of the building the closest to being able to receive roof trusses. The addition of the gabled end moves that closer at Area B.



- c) The block at the end of the classroom wing will be topped with a concrete cap angled to match the roof slope. Light rain was still falling from the storm during the night, but the masons were continuing to work.



JRA Architects

3225 Summit Square Place, Suite 200 Lexington, KY 40509
Tel: 1-859 252-6781 Fax: (859) 255-5483 www.jrarchitects.com

- d) Masons had laid brick at the exterior of the administrative area to a point above the soffit.



- e) Masons were laying brick over the concrete beam surrounding the administrative area. This brick will be below the soffit surrounding the administrative area.



- f) The "piers" between the windows at the exterior walls of the Library/Media Center have been laid. Icon has inspected the reinforcement and directed the masons on the placement.



- g) The corridor wall at the Library/Media Center is being laid.



- h) The CMU wall at the main entrance has been prepared for the placement of reinforcement according to instructions from Icon.



- i) The blockwork continues at the connection between Area B and Area C.



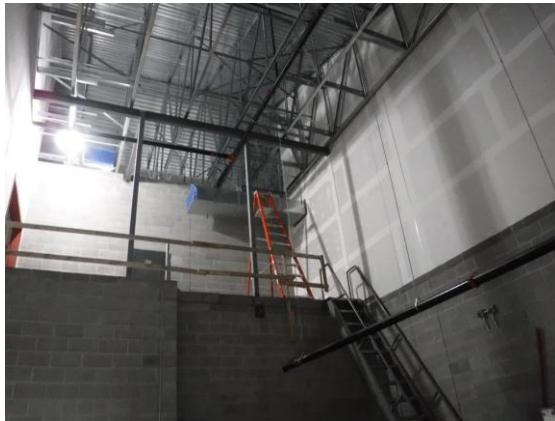
JRA Architects

3225 Summit Square Place, Suite 200 Lexington, KY 40509
Tel: 1-859 252-6781 Fax: (859) 255-5483 www.jrarchitects.com

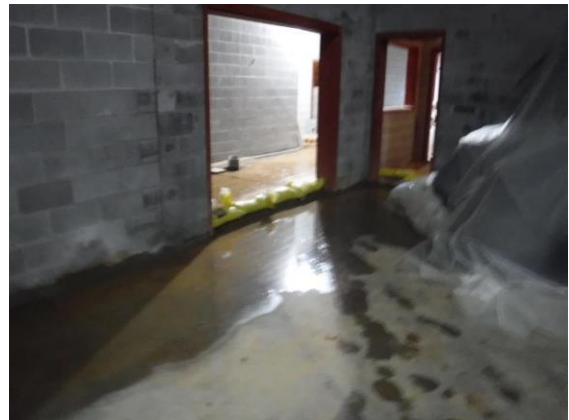
- j) The electricians were pouring concrete housekeeping pads in the Mechanical Room.



- k) Fire protection piping and ductwork has been hung above the Mechanical Room.



- l) The Gym slab is mostly dry even after significant rains the night before. The sandbags at the doors appears to be working.



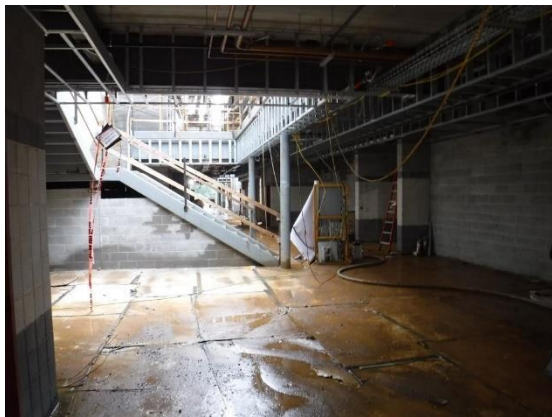
- m) Rough in work continues in the Kitchen and Cafeteria. Most this is above where the ceilings will be in these rooms.



- n) Now that the roof is over the support rooms for the Gym, overhead rough in work is ongoing in these spaces.



- o) Above ceiling rough ins are ongoing in the main corridor on the first floor. Metal stud framing has been installed for drywall soffits.



- p) The installation of steel framing for the mechanical platform over the middle classroom wing has been started. This framing also provides the bearing for the light gauge trusses that will go over this area.



- q) The masons are laying block along the second floor corridor so that the mechanical platforms can be installed over that area and connected to those at the Gym enclosure and to those over the classroom wings.



3. Stored Material:

- a. Block, brick, stone, mortar and masonry materials.
- b. Hollow metal door and window frames.
- c. Plumbing piping and accessories.
- d. Conduits and electrical boxes and rough in materials.
- e. Mechanical equipment.
- f. Light gauge framing.
- g. Fire suppression piping and fittings.
- h. Roofing materials.

JRA Architects

3225 Summit Square Place, Suite 200 Lexington, KY 40509
Tel: 1-859 252-6781 Fax: (859) 255-5483 www.jrarchitects.com

4. Follow up items:

- a. Maintain the Skudo system so that it protects the corridor slabs.
- b. Clean mud and rust off of steel, and reprime areas where the primer was scraped off of the steel.
- c. All trades shall keep the building and site clean by properly disposing all bottles, bags, wrappers, trash, debris, etc.
- d. Verify service access for heat pumps on the mechanical platform around the Gym.
- e. Provide protection board for all ladders, equipment and materials staged on the low sloped built up roofing areas. Remove all screws, nails, sheet metal and other sharp objects from these roof areas ASAP.

Follow up by:

☐ Architect, ☐ Owner, ☐ MEP Engineer, ☐ Structural Engineer, ☐ Civil Engineer
☒ Contractor, ☐ Other

Respectfully submitted,
Joseph Jones, AIA
JRA Architects

Cc: 201752.01, CA8