

English as a Second Language

Jefferson County Board of Education
August 18, 2020



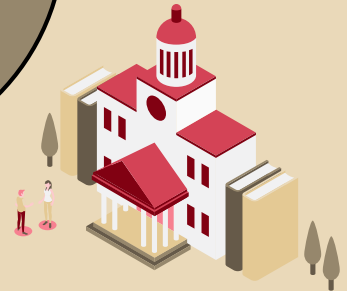
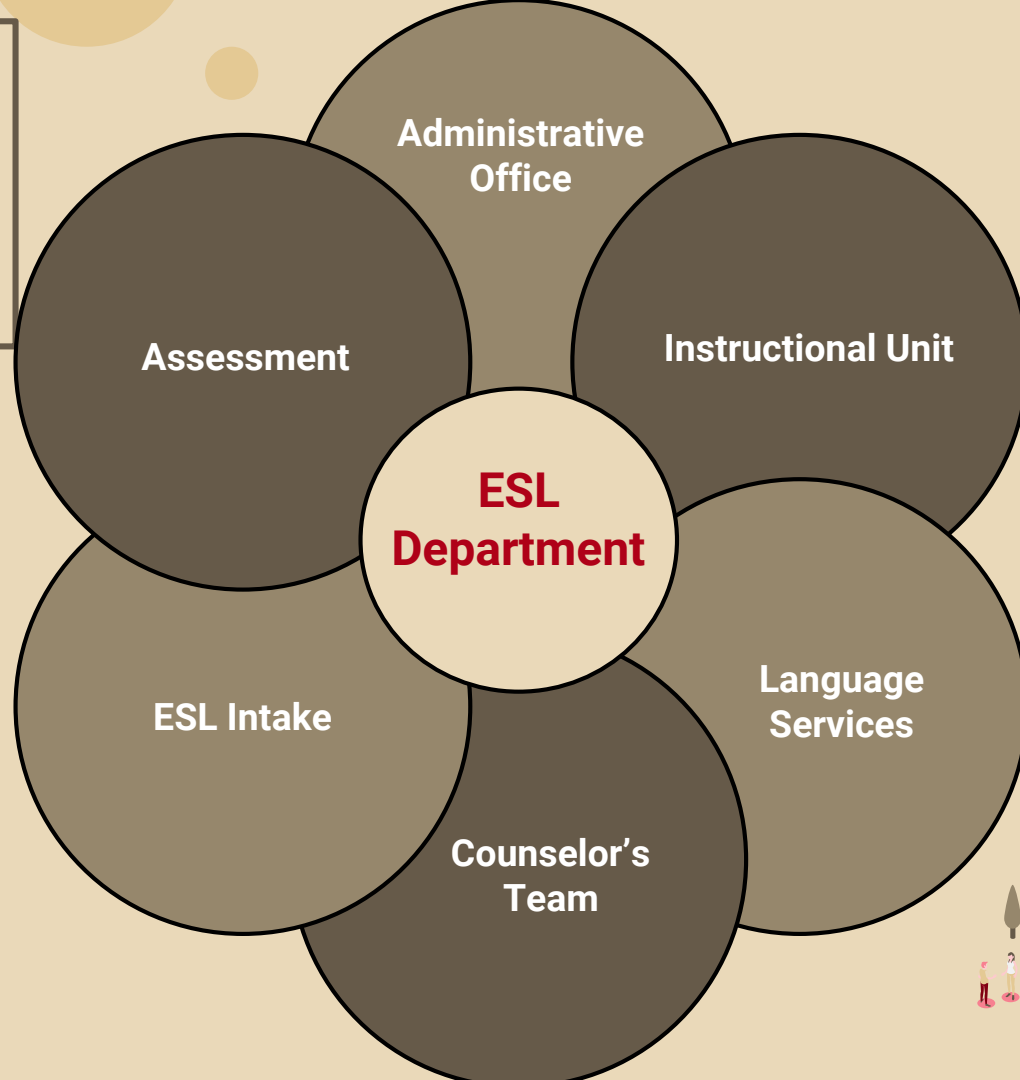
ESL Support Team

Dr. Carmen Coleman:

This team of dedicated professionals works around the clock. I cannot say enough about the work they do.

Led by Dr. Alicia Averette, our ESL team continually goes above and beyond to support students and families. The work they do -and their dedication to the children they serve - is second to none.

ESL Department Organization



English Learner Terms

Terminology	Definition
English Learner (EL)	Students whose primary language is a language other than English and have not yet achieved a 4.5 on the WIDA ACCESS 2.0 English Language Proficiency Assessment.
Parent Declined (Waived)	English Learners whose parents declined their participation in the ESL Program.
Monitored	Students who have reached English Proficiency. Students stay in the Monitored Status for 4 years.
Newcomer	“Newcomer” is an umbrella term that includes various categories of immigrants who are born outside of the United States. For JCPS, EL students in their first or second year of enrollment.

Strategies for ELL students: Beneficial for all learners

- Activate **prior knowledge**
- Provide a print rich environment
- Engage students in hands-on learning
- Keep the amount of new vocabulary workable
- Do frequent checks for understanding
- Allow students to work in small groups
- Use graphic organizers

**ESL Resource Teachers support teachers across the district
in specific strategies for English Language Learners.**



Newcomer Academy



A world of possibilities

NEWCOMER
ACADEMY

- Expanded A2G
- Transition Plans



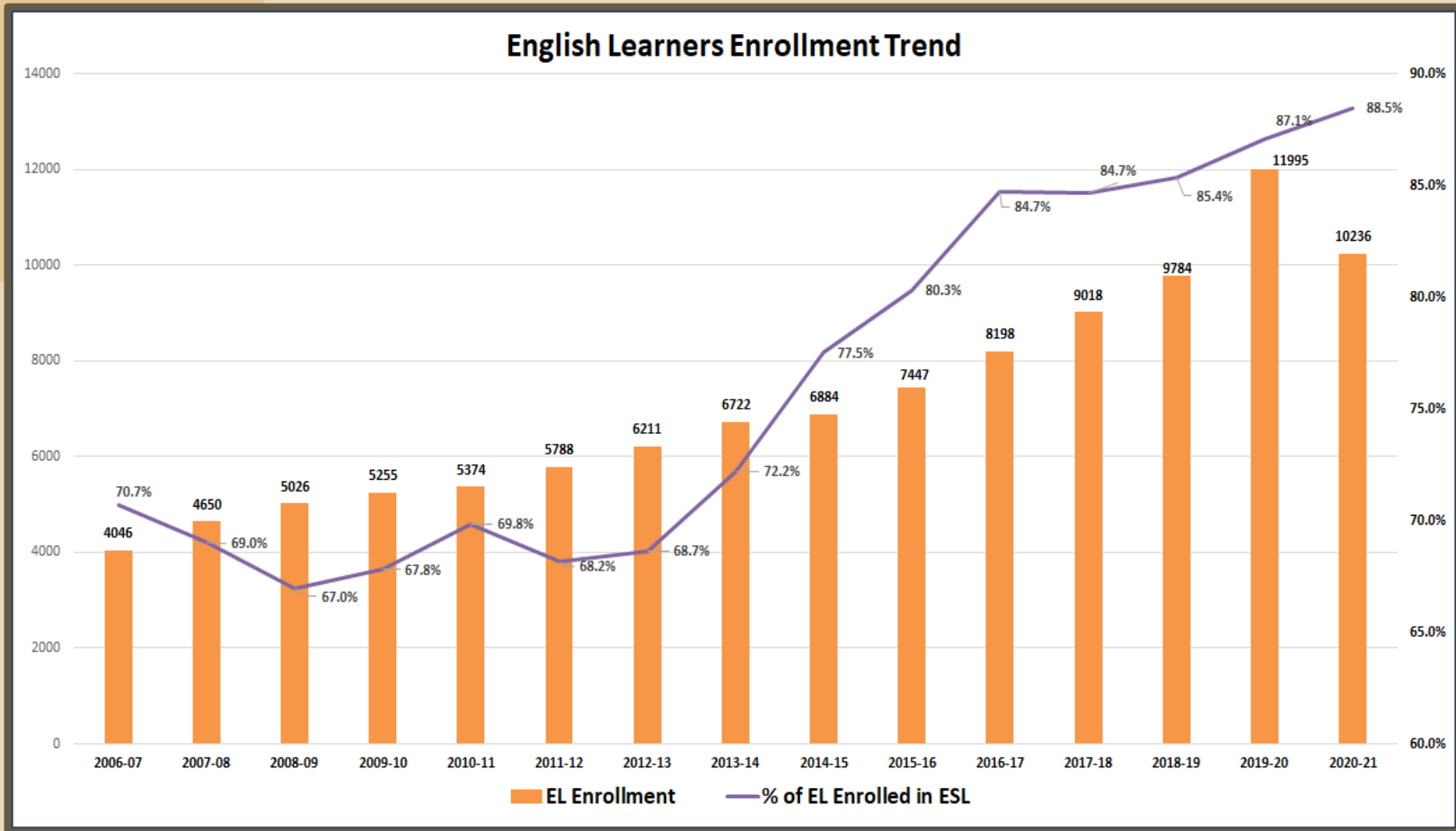
ESL Intake Center Data

School Year	EL Enrollment	Visitors
2016-17	2,756	5,095
2017-18	2,342	5,220
2018-19	2,724	5,830
2019-20 (as of 3/13/2020)	1,780	4,565 NTI 1.0 Calls: 1359
2020-2021	95* - does not include 20-21 Kindergartners	ESL Support calls as of 8/10/2020: 758

EL Historical Data for the last 10 years

English Learners (EL) Population											
2009-10	2010-11	2011-12	2012-13	2013-14	2014-15	2015-16	2016-17	2017-18	2018-19	2019-20	2020-21
5255	5374	5788	6211	6722	6884	7447	8225	9018	9784	11995	10236
Students enrolled in the ESL Program											
2009-10	2010-11	2011-12	2012-13	2013-14	2014-15	2015-16	2016-17	2017-18	2018-19	2019-20	2020-21
3563	3753	3945	4264	4852	5336	5981	6965	7636	8353	10444	9055
	5.33%	5.12%	8.09%	13.79%	9.98%	12.09%	16.45%	9.63%	9.39%	25.03%	

EL Growth Data



Equity for Students

To ensure equitable access, direct ESL support services will be provided in all schools.



We are awaiting final enrollment numbers to determine where teacher support will be needed.

Engaging EL Families during NTI 2.0

- NTI 2.0 EL Parent Letter (translated into top 5 languages)
- ESL Parent Support - Virtual Support Live Sessions
 - Next Week in Spanish, Arabic, Nepali, Somali, Swahili
- Increased Language Line Solutions Trainings for Schools and Departments



Translation Services

1 In-Person Interpreting

- Assessments
- Parent-Teacher Conferences
- Home Visits
- Meetings
- Open Houses

2 Over-the-Phone Interpreting

- On-Demand Interpreting
- Setting Up Meetings
- Relaying Messages
- Emergencies

3 Video Interpreting

- Virtual On-Demand Interpreting
- Brief Meetings
- Emergencies

4 Translations

- Districtwide Documents
- Parent Notes
- Library of Translations

Not sure how we can help?

Jefferson County Public Schools (JCPS) Language Services

facilitates interpretation and translation needs for **all** JCPS schools and central offices districtwide.

**Emergency
Language Support**
485-6379

**Nonemergency
Language Support**

To complete an online request,
visit www.jefferson.kyschools.us,
click on *Support*, and click on *Language Services*.

**Assisting Parents With
Language Support**

Parents may obtain Language Support by
contacting their child's school and requesting
assistance.

**Language Services
Coordinator**
485-7939

languageservices@jefferson.kyschools.us

**Language Support
Facilitator**
485-6379

languageservices@jefferson.kyschools.us

**Language Support
Facilitator**
485-7938

languageservices@jefferson.kyschools.us

**Data Management
Resource Technician**
485-7939

Next Steps Meeting ESL Needs: Tiered Approach

- Professional development for all teachers
- ESL endorsements
- Additional Teachers
- Newcomer support grades 3-5





Questions and Feedback

