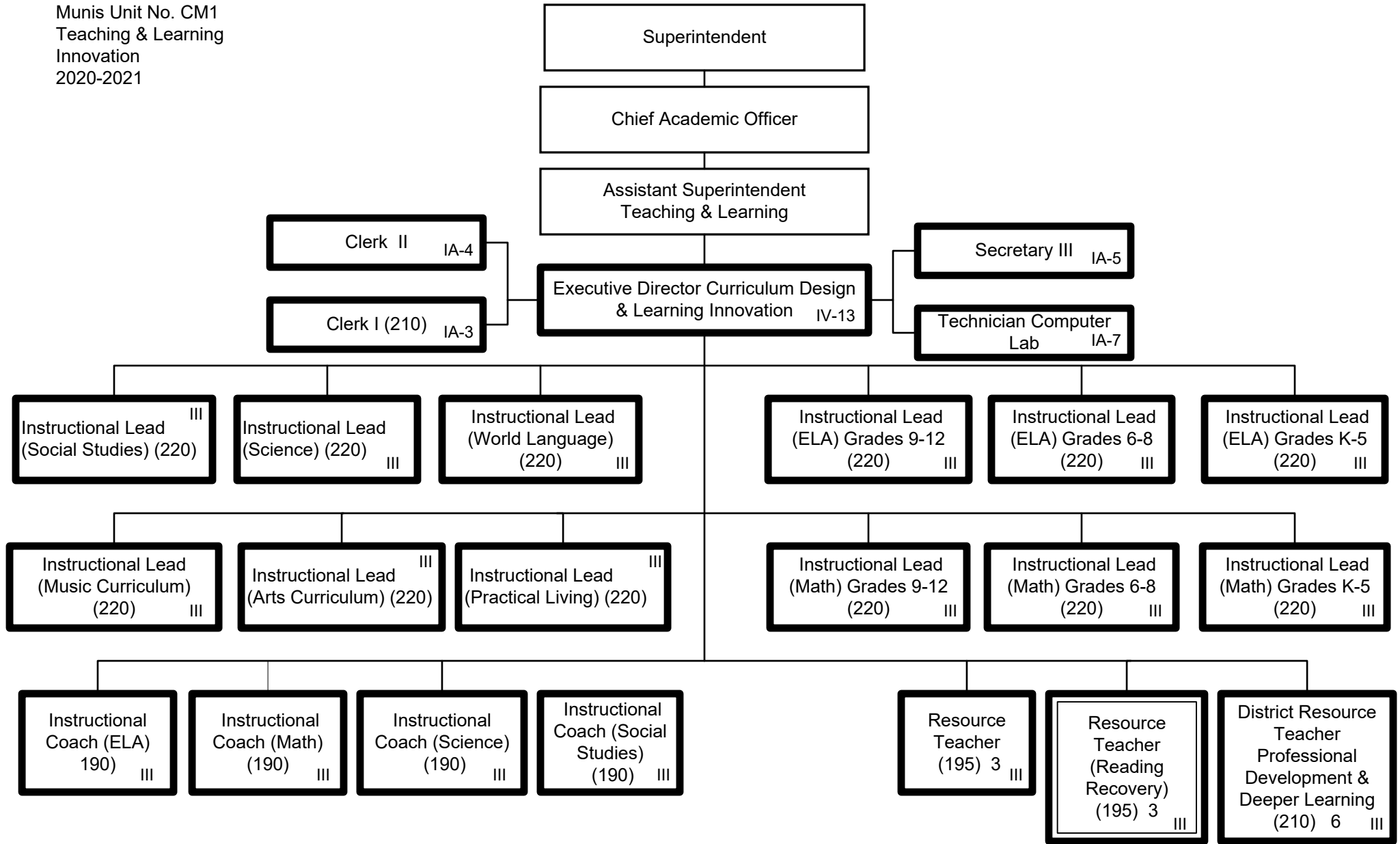


1. Add back one position to Central Office moved to schools in error.
2. Add back one position to Central Office moved to schools in error.

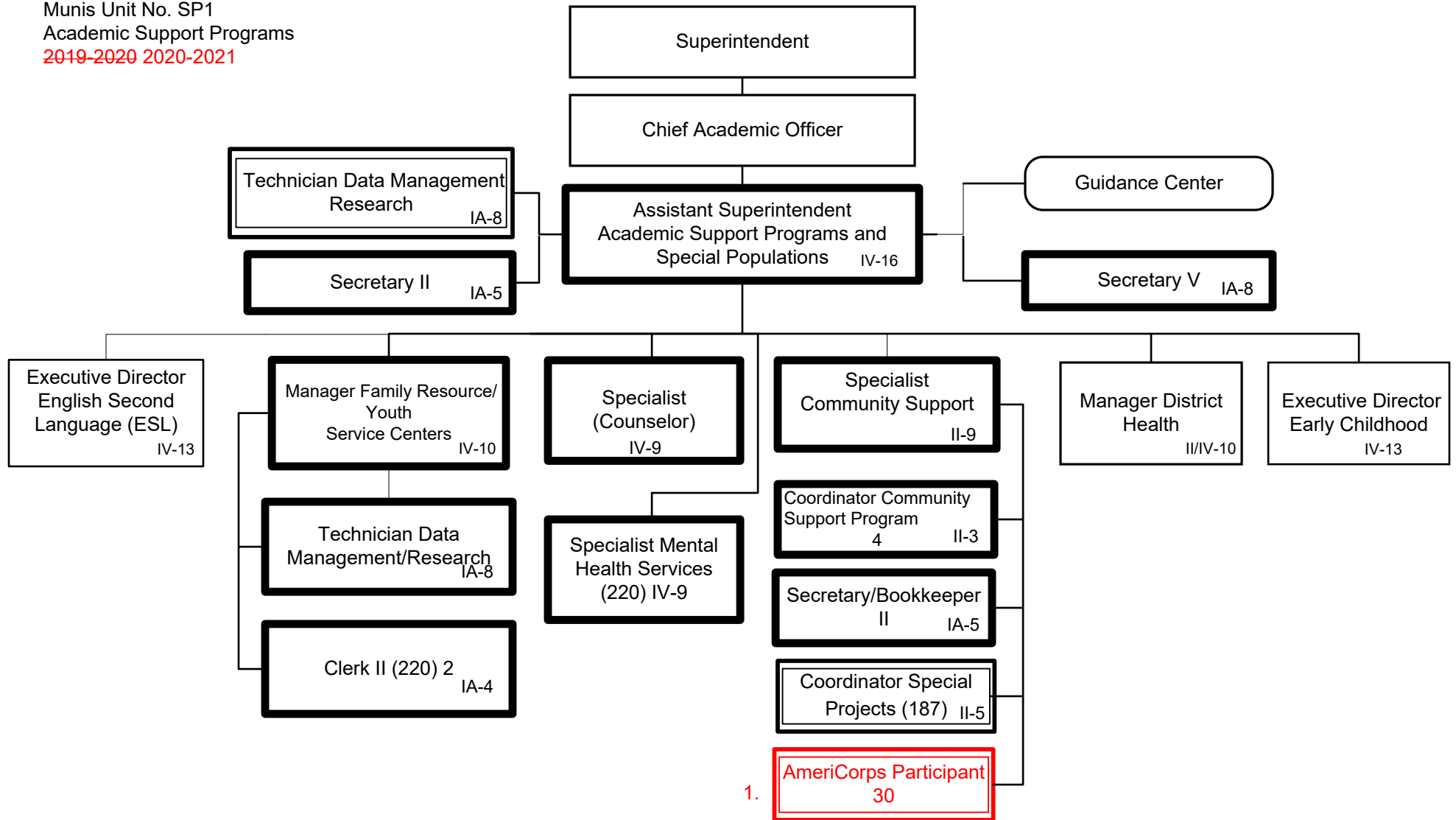
Summary:

General Fund Positions: 36 30
Categorical Fund Positions: 3



Summary:

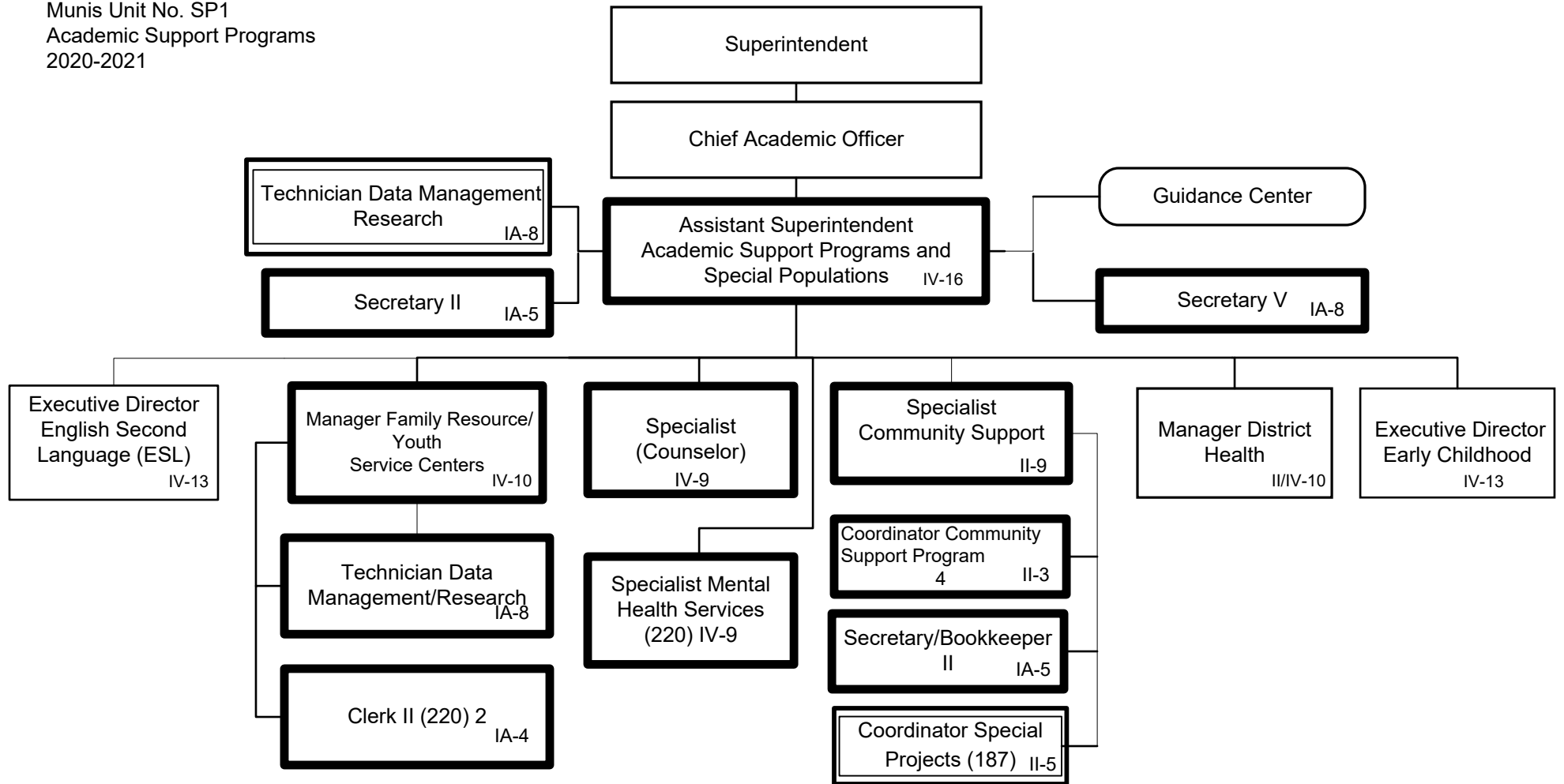
General Fund Positions: 30
Categorical Fund Positions: 3



1. Move positions from Central Office to schools

Summary:

General Fund Positions: 14
Categorical Fund Positions: 32 2



Summary:

General Fund Positions: 14
Categorical Fund Positions: 2