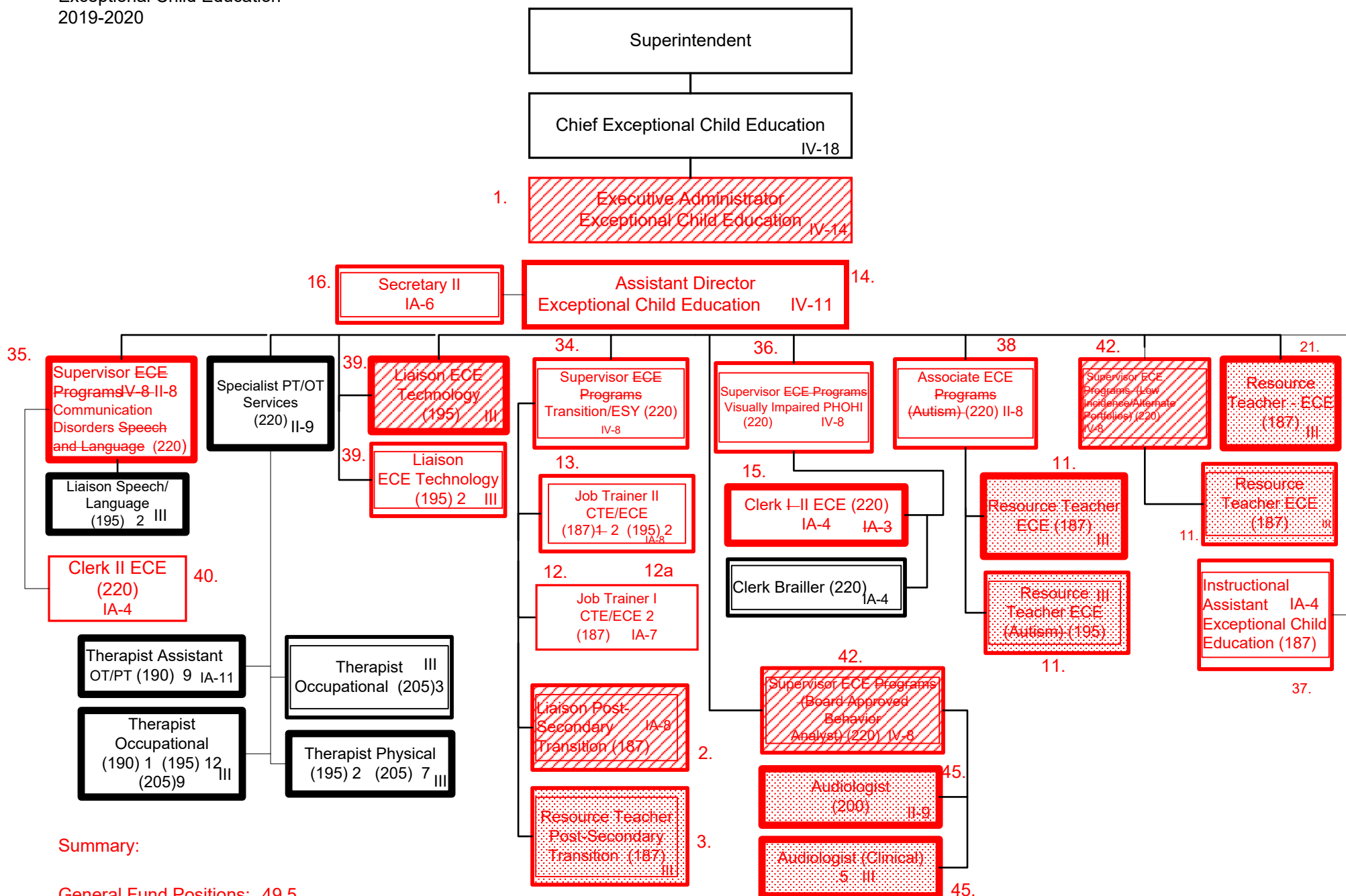


Summary:

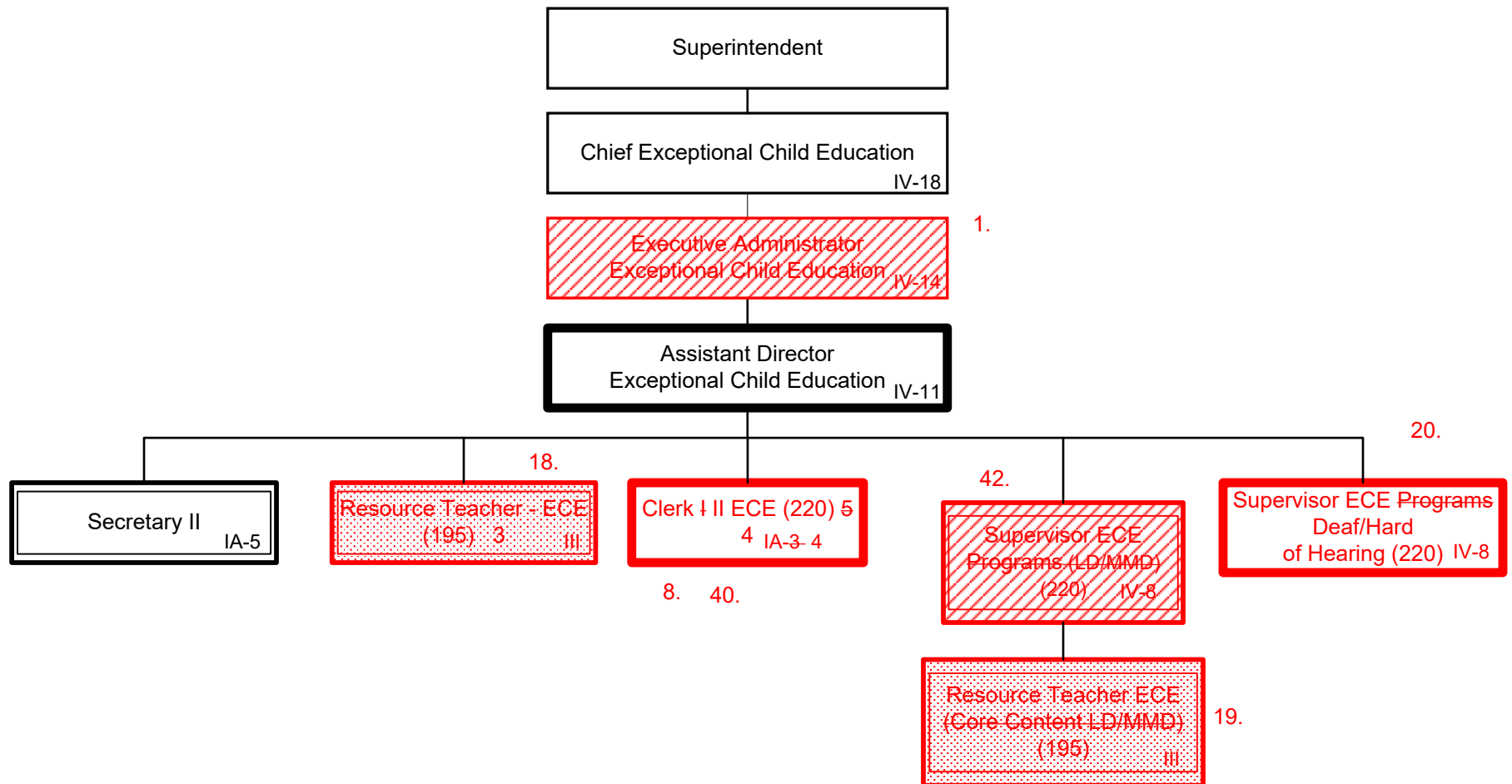
General Fund Positions: 14
 Categorical Fund Positions: 44

Submitted 12/10/2019 4/21/2020
 Effective 12/11/2019 7/1/2020



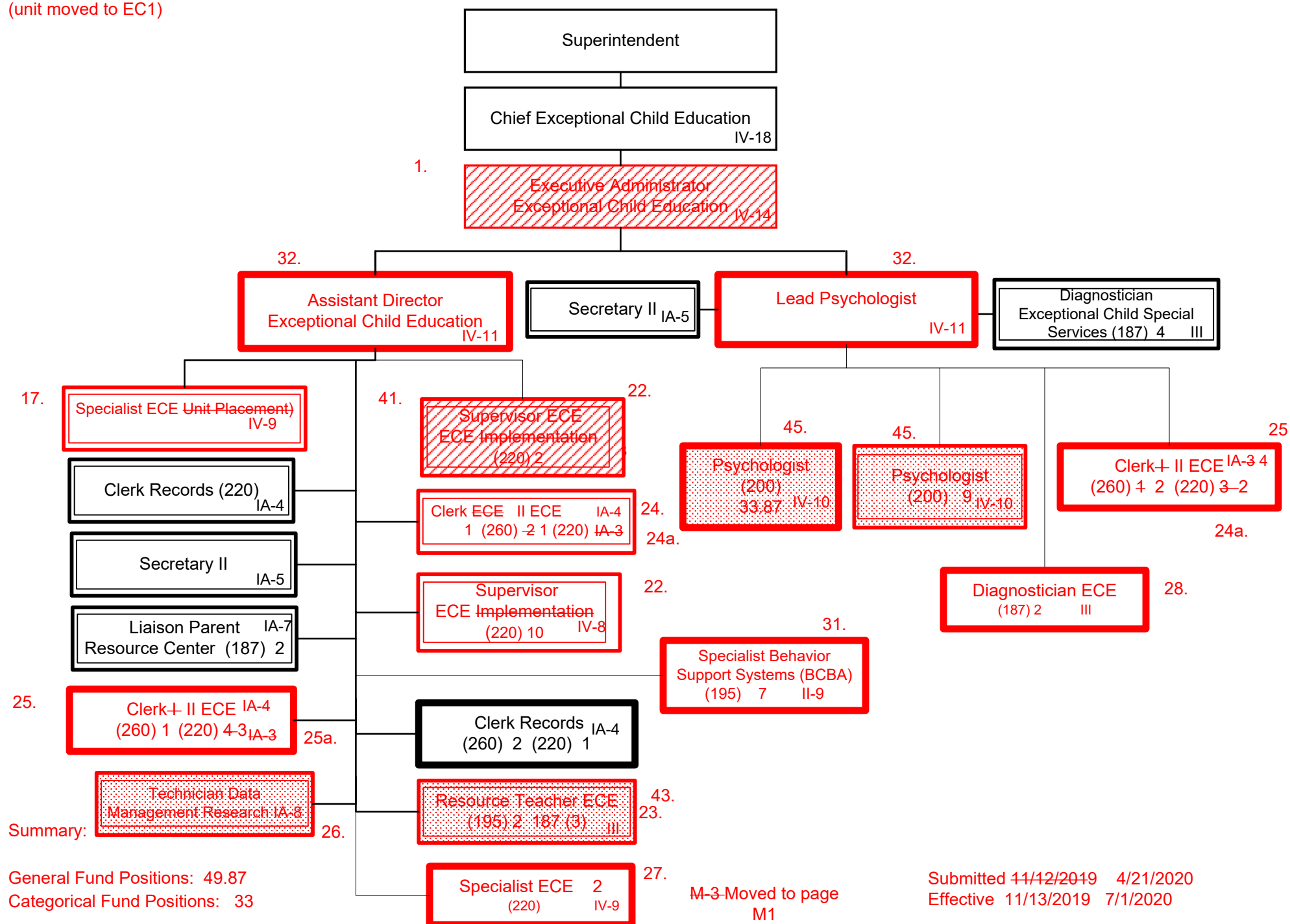
Summary:

General Fund Positions: 49.5
 Categorical Fund Positions: 49



Summary:

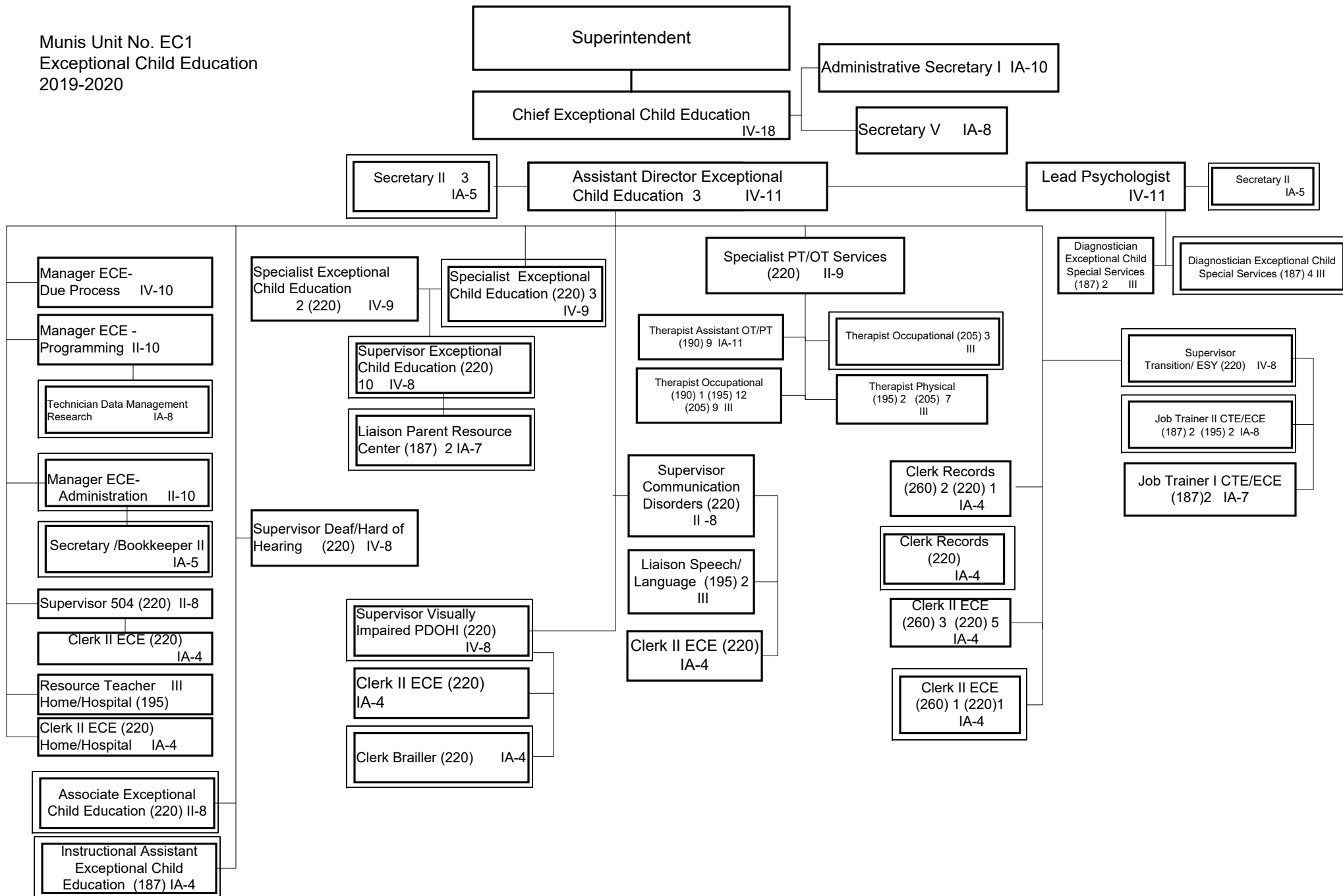
General Fund Positions: 7
 Categorical Fund Positions: 6 5



1. Delete Executive Administrator ECE
2. Delete Liaison Post-Secondary Transition
3. Move Resource Teacher Post-Secondary Transition from unit EC1 to GL1
4. Reclassify Clerk I(260) to Clerk II ECE(260 days)
 - 4a. Change reporting relationships to Chief ECE
5. Add Manager ECE-Programming (260 days) (II-10)
6. Add Manager ECE-Administration (260 days) (grant funded) (II-10)
7. Change title from Manager ECE-Behavior to Manager ECE-Due Process
8. Reclassify Clerk I (220) to Clerk II ECE (220 days)
9. Add one Clerk II ECE (220) reporting to Supervisor 504
10. Change reporting relationship Secretary V from Executive Administrator ECE to Chief ECE
11. Change title to Resource Teacher ECE and move to schools
12. Add one Job Trainer I CTE/ECE (187 days)
 - 12a. change funding source from Federal to General Fund
13. Add one Job Trainer II CTE/ECE (187 days)
14. Add one Assistant Director ECE (260 days)
15. Reclassify Clerk I (220) to Clerk II ECE (220 days)
16. Add Secretary II (260 days) (Grant Funded)
17. Reduce days of three Specialist ECE from 260 to 220 (Grant Funded)
18. Change title to Resource Teacher- ECE
19. Change title to Resource Teacher-ECE and move to schools
20. Change title Supervisor ECE Deaf/Hard of Hearing
21. Change funding from General Fund to Grant Funded, change title to Resource Teacher ECE and move to schools
22. Change title from Supervisor ECE implementation to Supervisor ECE Grant Funded 220 days
23. Change title to Resource Teacher ECE and move to schools
24. Reclassify Clerk ECE from IA-3 to IA-4, change title to Clerk II ECE
 - 24a. Change funding source on one 220 day from General Fund to Federal and one 260 day from Federal to General Fund
25. Reclassify Clerk I to Clerk II ECE
 - 25a. Delete one 220 day Clerk I
26. Move Technician Data Management Research to report to Manager ECE-Programming
27. Add two Specialist ECE (220 days) General Fund
28. Add two Diagnosticians ECE (187 days) General Fund
29. Add two Liaison II, III, ECE Behavior (187 days) General Fund and move to schools
30. Add one Coach Certified Behavior Intervention (187 days) General Fund and move to schools
31. Add seven Specialist Behavior Support Systems (BCBA) 195 days (General Fund) and move to schools
32. Move Unit EP1 to Unit EC1

33. Change reporting relationship from Executive Administrator ECE to Manager ECE-Administration
34. Change title to Supervisor Transition/ESY
35. Change title to Supervisor Communication Disorders and change to job family II
36. Change title to Supervisor Visually Impaired PDOHI
37. Change reporting relationship to Assistant Director ECE
38. Change title to Associate ECE from Associate ECE Programs
39. Change funding from General Fund to Federal on Liaison ECE Technology position
40. Change reporting relationship of one Clerk II ECE (220 days) to Supervisor Communication Disorders
41. Delete four Supervisor ECE (220 days) General Fund
42. Delete five Supervisor ECE (220 days) Grant Funded
43. Add three Resource Teachers ECE (187 days) Grant Funded and move to schools
44. Change days for Resource Teacher 187 days to 195 days
45. Move positions to schools
46. Change reporting relationship from Specialist ECE to Chief ECE, and change title of Resource Teacher (Home Hospital) to Resource Teacher Home Hospital
47. Change position from job family IV certified to job family II classified

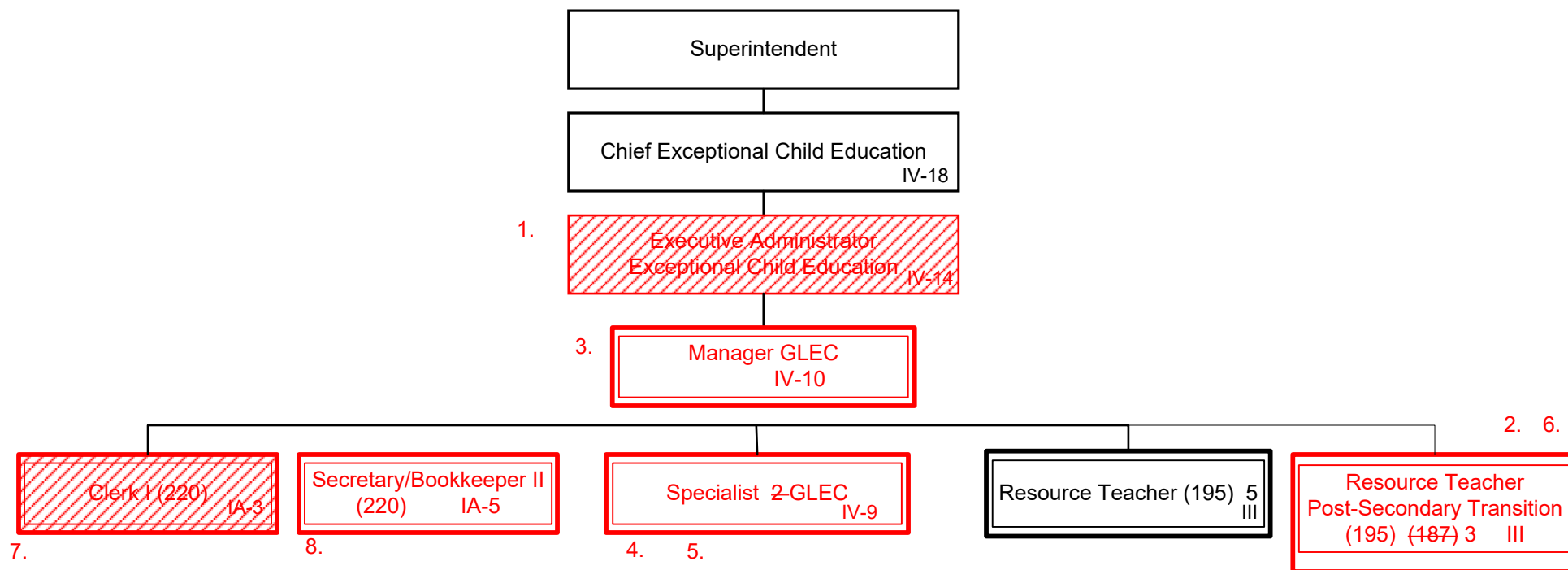
Munis Unit No. EC1
 Exceptional Child Education
 2019-2020



Summary:

General Fund Positions:

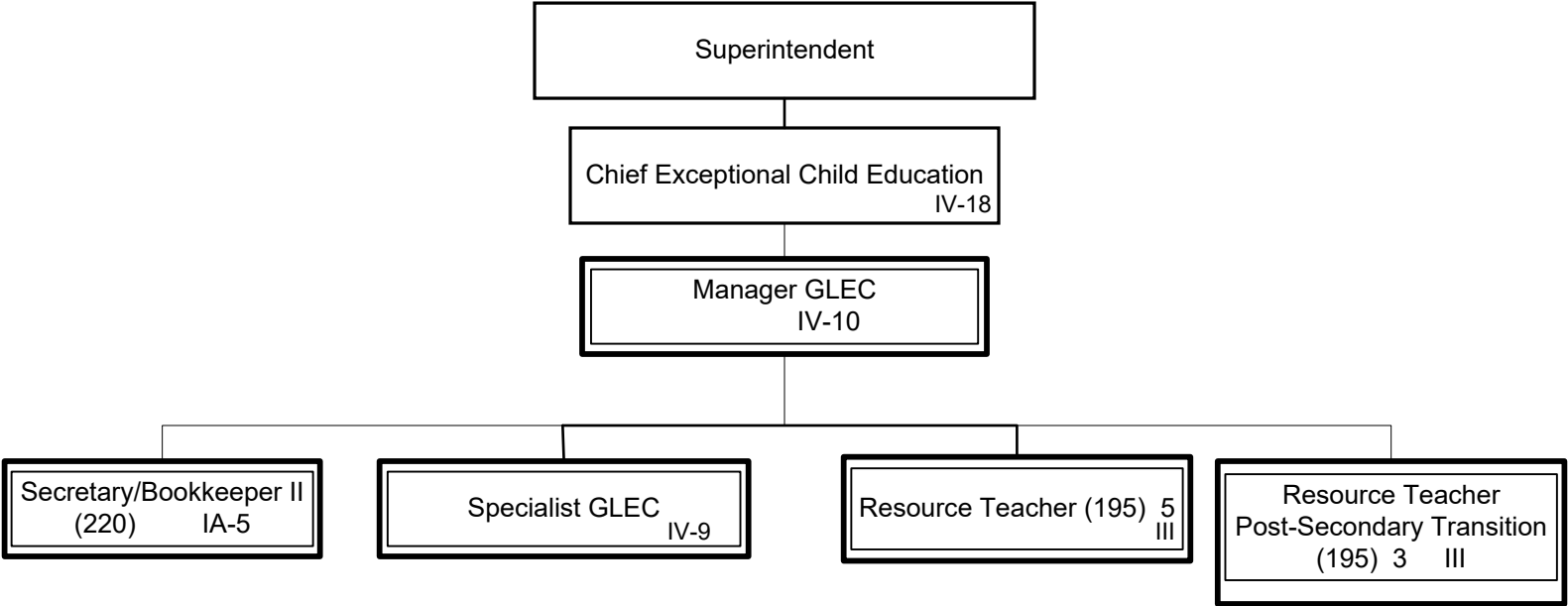
Categorical Fund Positions:



1. Delete Executive Administrator ECE
2. Move Resource Teacher Post-Secondary Transition to GL1 from EC1 and change days from 187 to 195
3. Add Manager Greater Louisville Educational Cooperative
4. Delete one Specialist
5. Rename One Specialist to Specialist GLEC
6. Add two Resource Teacher Post-Secondary Transition (195)
7. Delete Clerk I (220)
8. Add Secretary/Bookkeeper II (220)

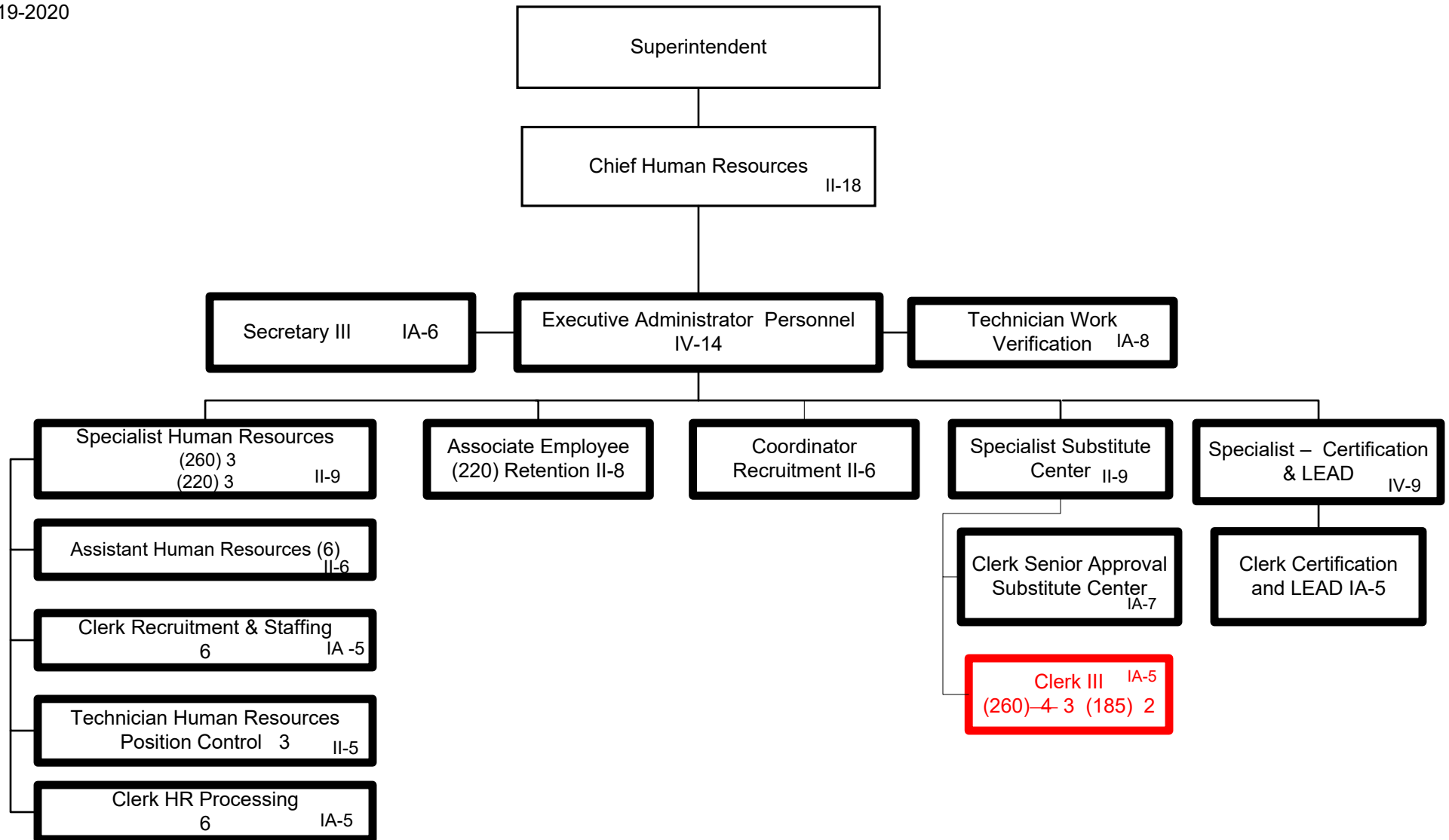
Summary:

General Fund Positions: 0
Categorical Fund Positions: 8-11



Summary:

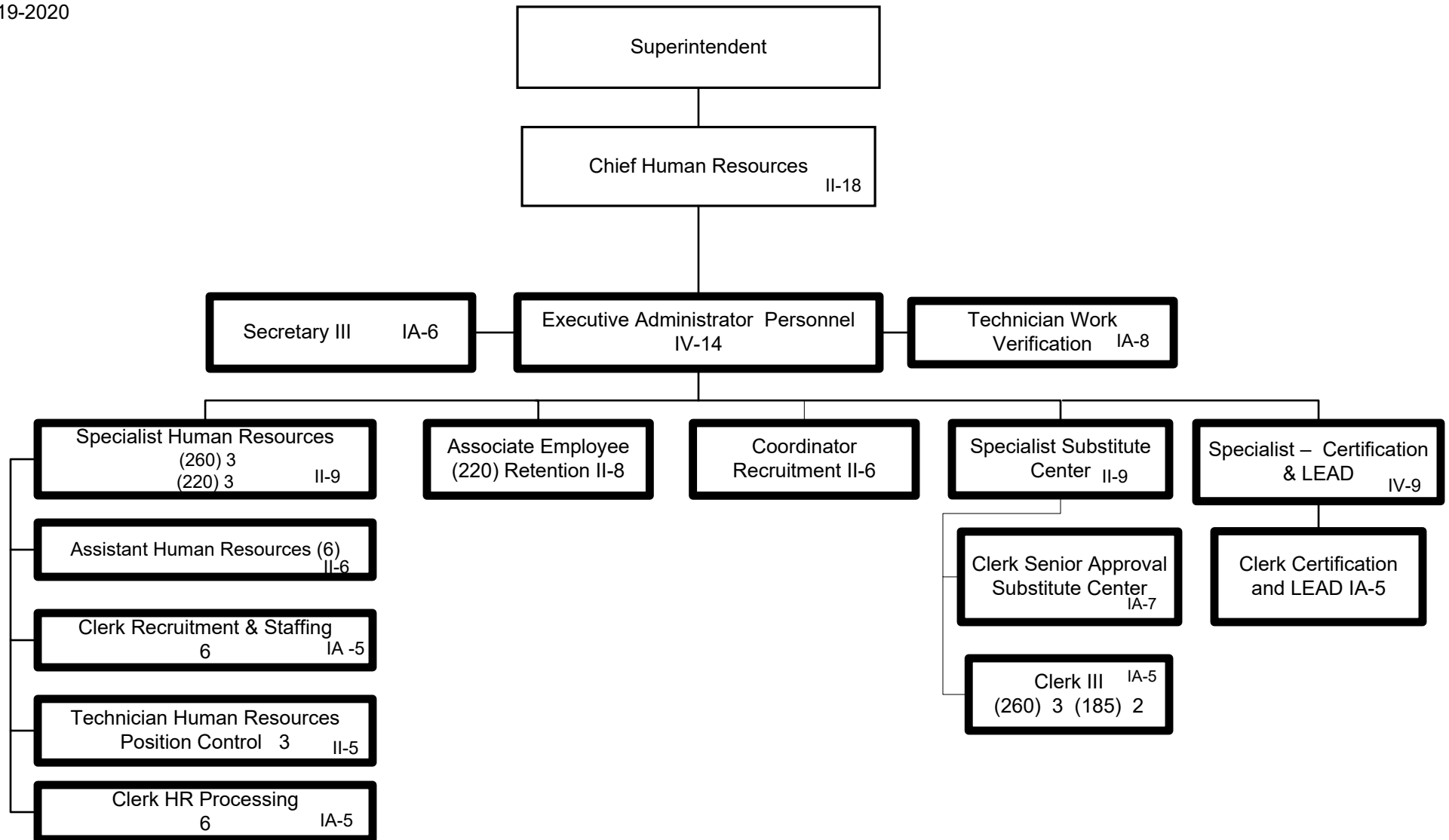
General Fund Positions: 0
Categorical Fund Positions: 11



Summary:

General Fund Positions: 42- 41

Categorical Fund Positions: 0



Summary:

General Fund Positions: 41
Categorical Fund Positions: 0