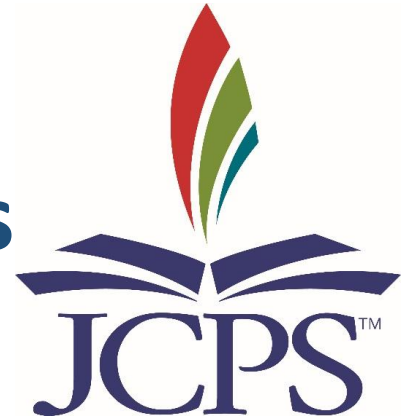


JCPS Update: Coronavirus



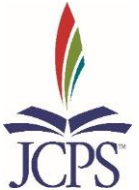
*Jefferson County Board of Education Meeting
April 14, 2020*

JCPS Update

Instruction
Technology
Communication
Nutrition
KDE Documentation
Calendar/Certified Evaluation Plan



**Jefferson County
Public Schools
Non-Traditional
Instruction (NTI)**



Instruction

PreK-12 Choice Boards, paper and digital

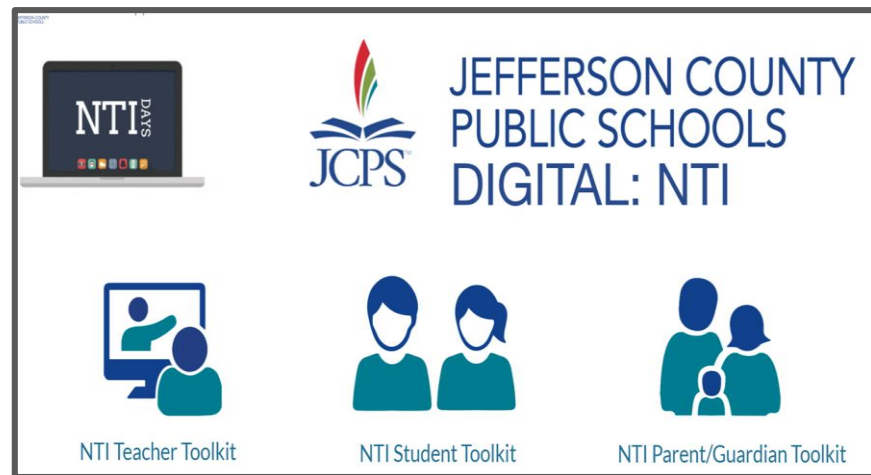
K-12 Reading and Math Practice, paper

[NTI Support Portal](#)

[JCPS Digital Learning Channel](#)

[Schedule of LIVE trainings](#)

Grading



Supporting Students

ESL Supports

Early Childhood

Special Education

Post COVID-19: What are we learning?



Technology

Telecommuting Support

NTI Support

Chromebook Distribution and Support

Internet Access - Hotspot Distribution and Support



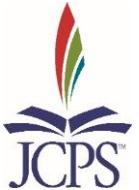
Communication



Direct communication with families to request digital assistance

Strategic communication across platforms with families and employees about closures and NTI

Social media ads and traditional earned media for NTI



Nutrition

406,645 meals distributed since March 16

3 days a week - Monday (2), Wednesday (2), Friday (1)

68 sites - 44 schools; Americana; 13 mobile sites

Up to 3 sets of meals for children not present

175 SCNS workers processing, assembling and distributing meals



KDE Documentation

Evidence of Learning

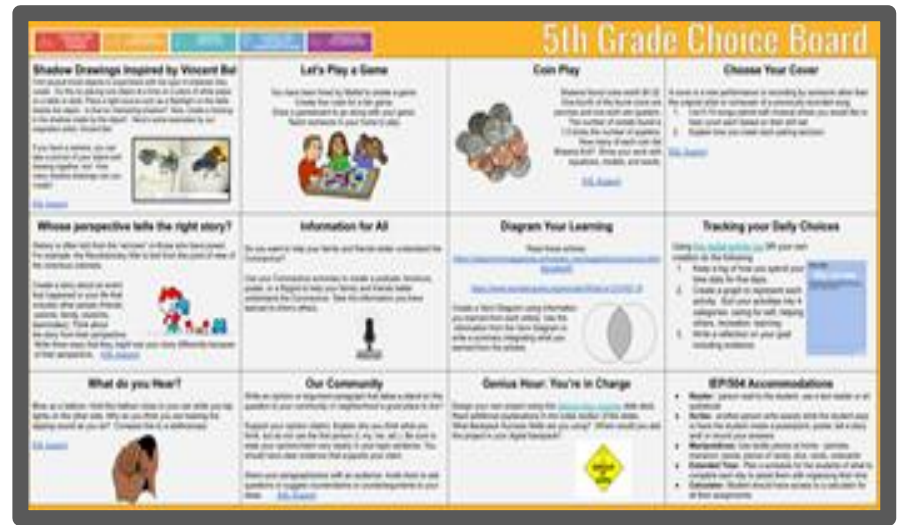
- Use examples of lesson plans and student work

Student Participation

- Use new Infinite Campus module
- Consider broadly - as any type of contact that staff would provide to support students

Teacher Participation

- Use time/attendance records



Revised 2019-20 Calendar

Ten (10) Instructional Days Missed due to COVID-19

- March 16, 17, 18, 19, 20, 23, 24, 25, 26
- April 6 (became an inservice day to prepare for NTI)

Change the following six (6) days to Instructional Days

- May 1 (formerly Oaks day)
- May 19 (primary election has been delayed)
- June 1, 2, 3

Remove four (4) instructional days from the calendar

- Calendar meets statutory requirement of 1062 hours and 171 instructional days)



Revised Evaluation Plan

Non-Administrative, Summative Evaluations-collaborated with EQOC

- 2019-2020 Summative evaluations extended to the 2020-2021 academic year
- All observations conducted in the 2019-2020 academic year used toward the respective summative evaluations
- All summative evaluations are moved one year from their current required year (e.g., summative evaluations due in 2020 are due in 2021, those due in 2021 are due in 2022, and those due in 2022 are due in 2023)



Revised Evaluation Plan

Exceptions

- Employee summative evaluations may be completed during the 2019-2020 school year only for those who had all observations completed by March 13, 2020.
- Non-renewals that have completed all required observations
- Disciplinary non-renewals
- Employees currently on Intensive Support

Probationary Classified Employees

- Dates for probationary periods are frozen starting March 13, 2020, and resume when JCPS returns to normal operating procedures

