

## JEFFERSON ELEMENTARY SCHOOL ALTERNATES

- |  |            |
|--|------------|
| 1. <b>ADD GYM SEPERATION CURTAIN</b> – Add electronically controlled curtain at half court line.   | *          |
| REJECTED   | No Change  |
| 2. <b>DELETE CAFETERIA CEILING BULKHEADS</b> – Change would make ceiling uniform plain.            | *          |
| REJECTED   | No Change  |
| 3. <b>CHANGE DROP OFF CANOPY</b> - Changes canopy from cantilever to two post system               | *          |
| ACCEPTED   | (\$13,500) |
| 4. <b>DELETE ALVES STREET PARKING LOT</b> – Deletes existing SMS parking lot upgrades and sidewalk | *          |
| REJECTED   | No Change  |
| 5. <b>DELETE BASKETBALL AND FOURSQUARE COURTS</b> –Lawn in lieu of hard surface and equipment*     | *          |
| ACCEPT   | (\$34,365) |
| 6. <b>ADD SECURITY LAMINATION</b> – Adds School Guard Glass to first floor windows and doors.      | *          |
| REJECT   | No Change  |
| 7. <b>ADD MOISTURE MITIGATION</b> – Includes mitigation for all building concrete in project.      |            |
| REJECT   | No Change  |
| 8. <b>CHANGE HVAC CONTROLS</b> – Specified TRANE controls in lieu of lowest price controls         |            |
| REJECT   | No Change  |
| 9. <b>CHANGE ACCESS CONTROLS</b> – Specified RS2 System in lieu of Identocard                      |            |
| ACCEPT   | \$0        |
| 10. <b>CHANGE CAMERA SYSTEM</b> – Specified WiseNet Wave System in lieu of Panasonic               |            |
| ACCEPT   | \$0        |

---

<b>TOTAL</b>	(\$47,865)
--------------	------------

\* = Supplementary Plans/Renderings Included.



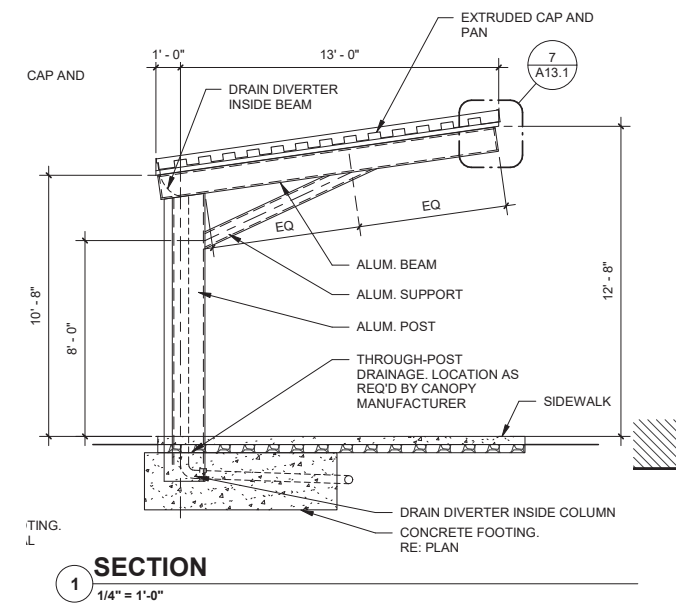
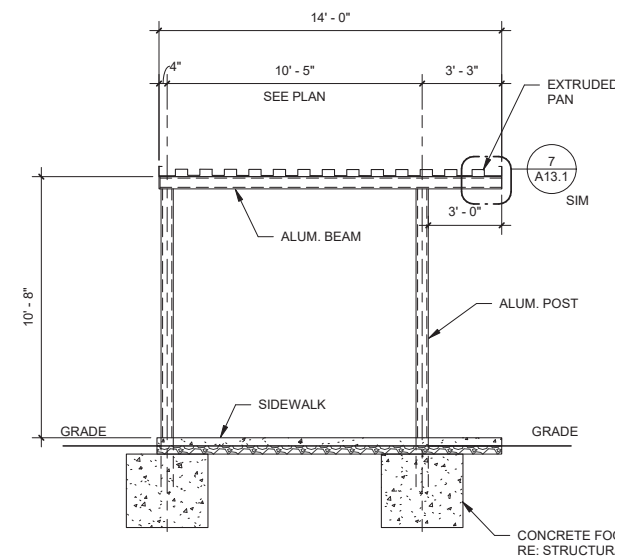
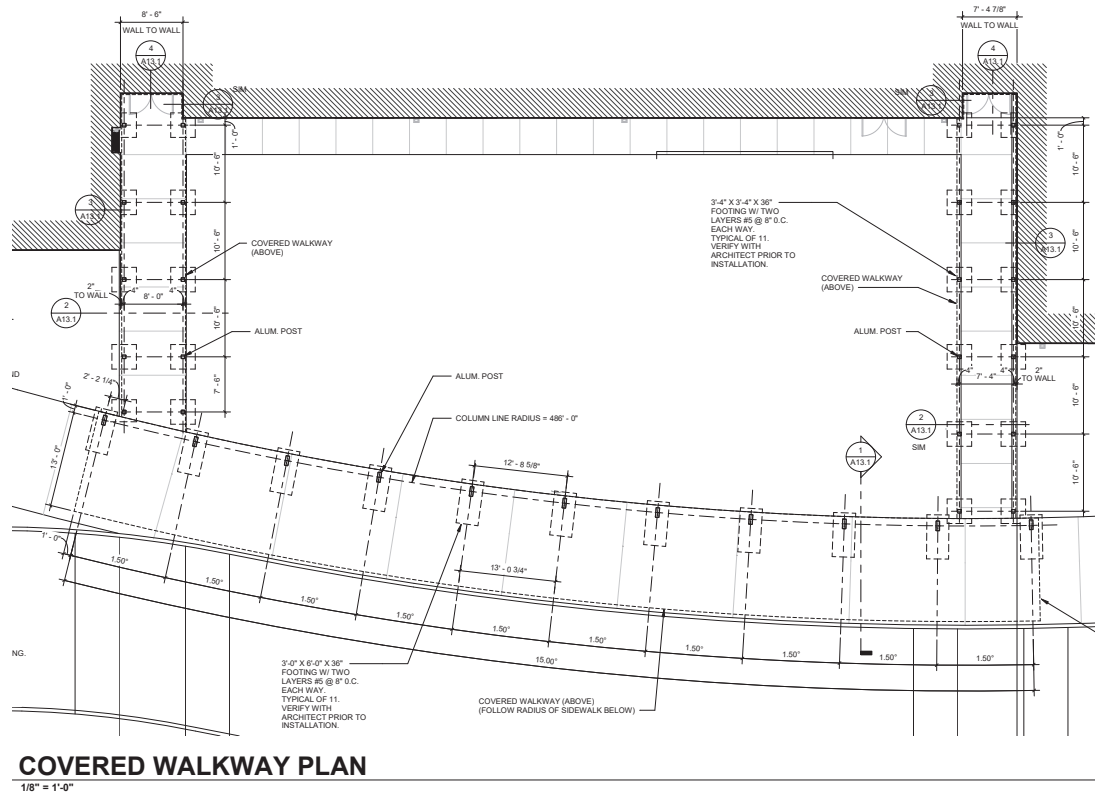




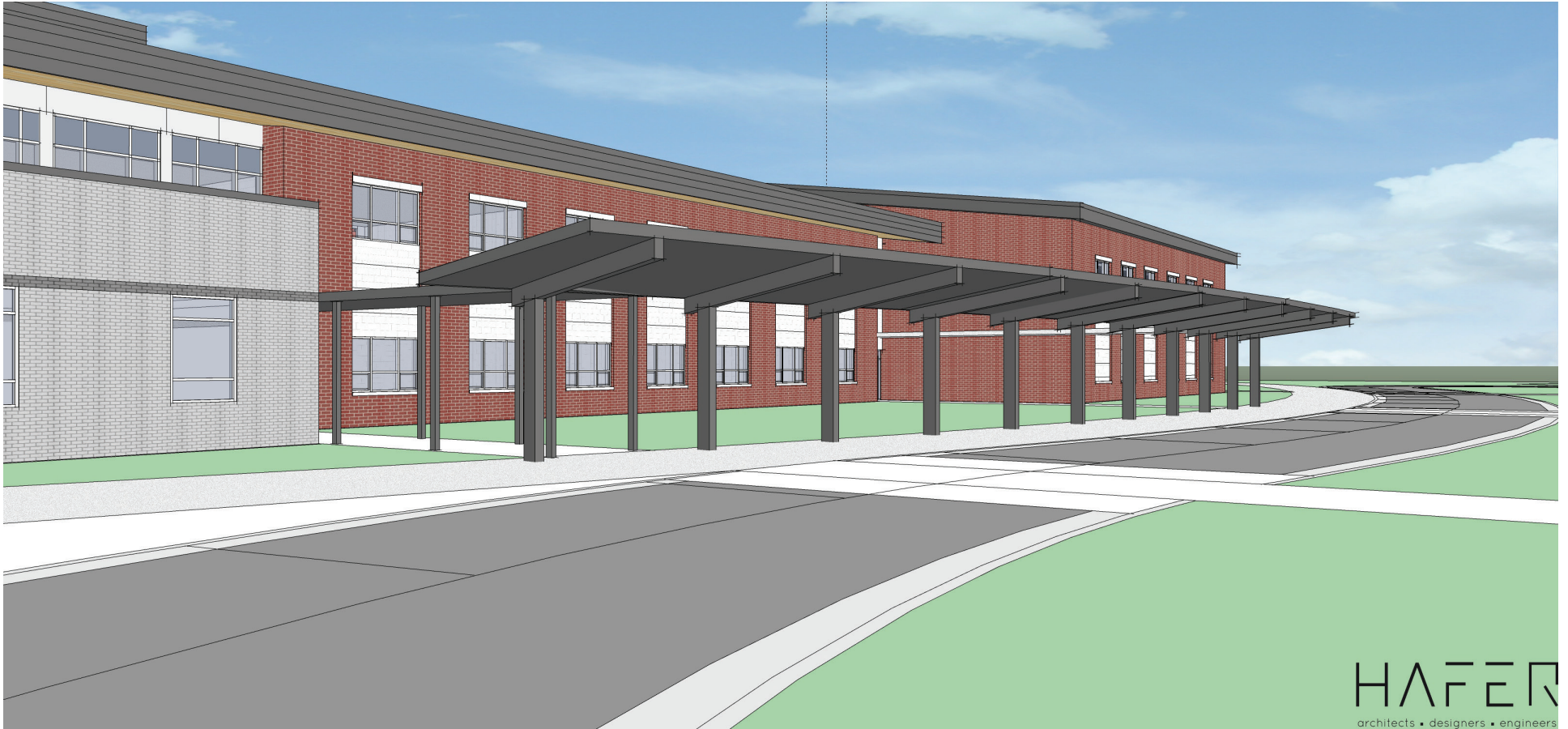
ALT #2



ALT #2



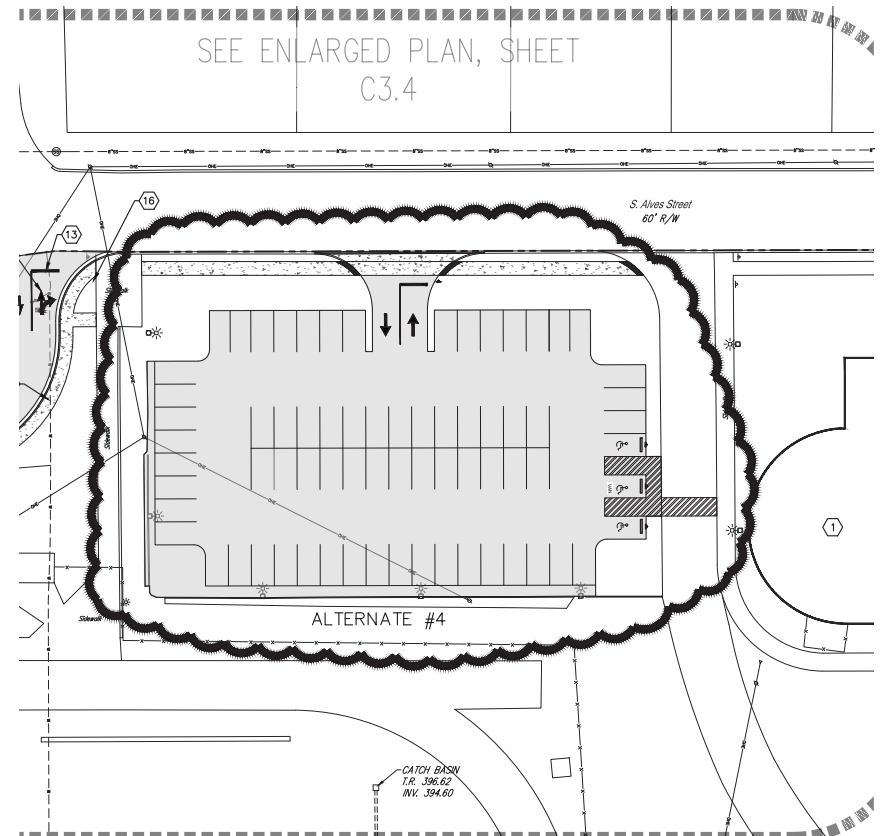
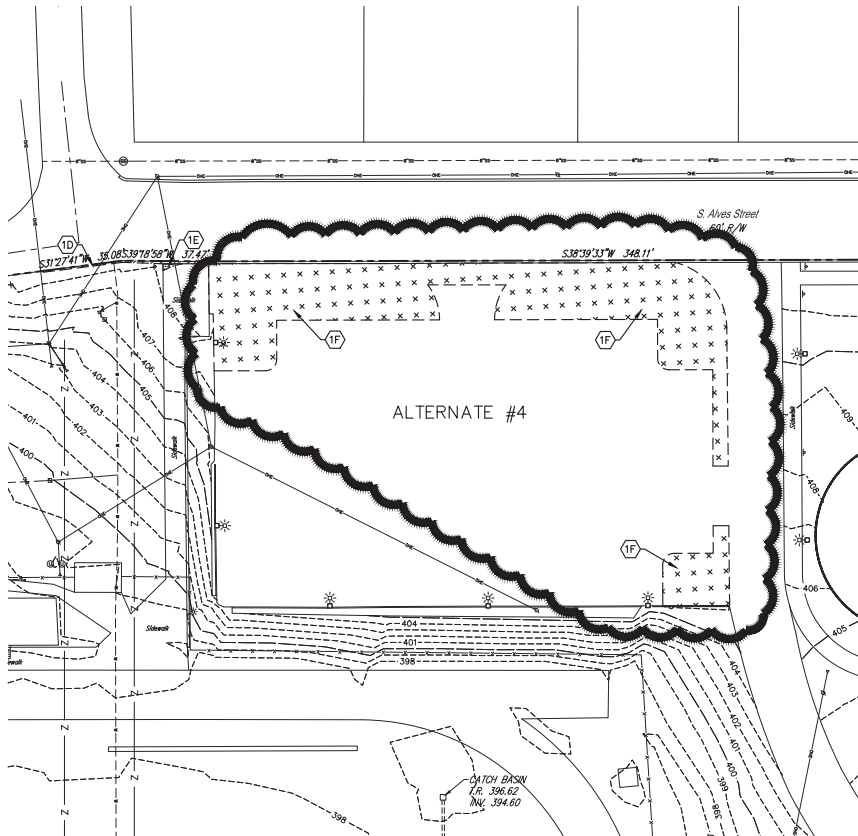
ALT #3



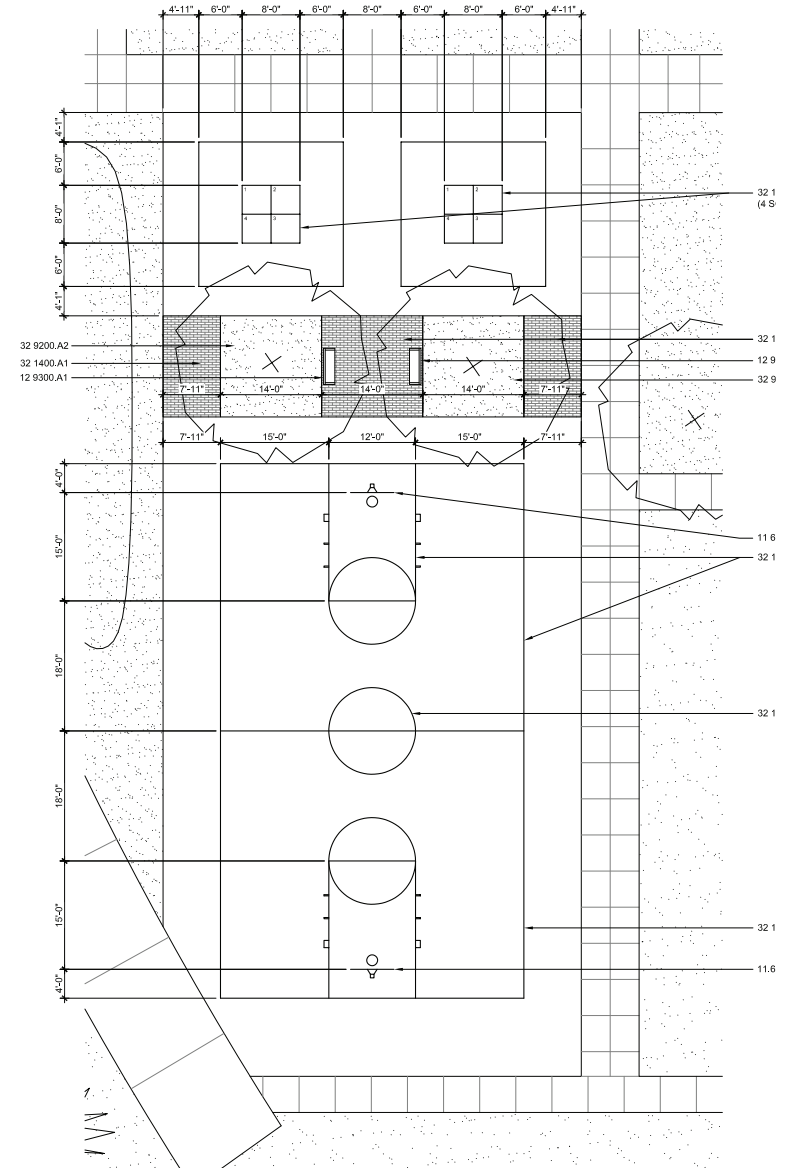
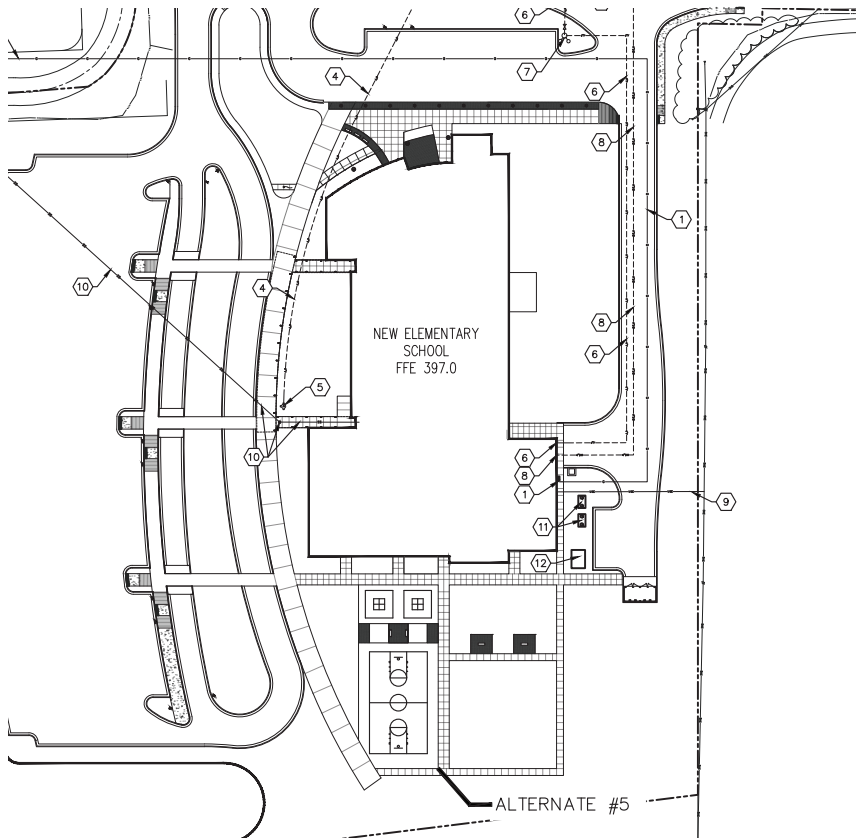
ALT #3



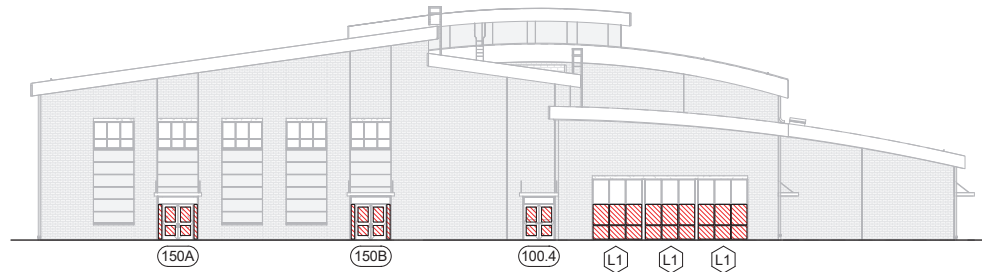
ALT #3



ALT #4



ALT #5



2 **EAST ELEVATION**  
3/64" = 1'-0"



1 **NORTH ELEVATION**  
3/64" = 1'-0"

**LEGEND :**

 GLAZING TO RECEIVE SECURITY LAMINATION AS PART OF ALTERNATE #6 WORK.

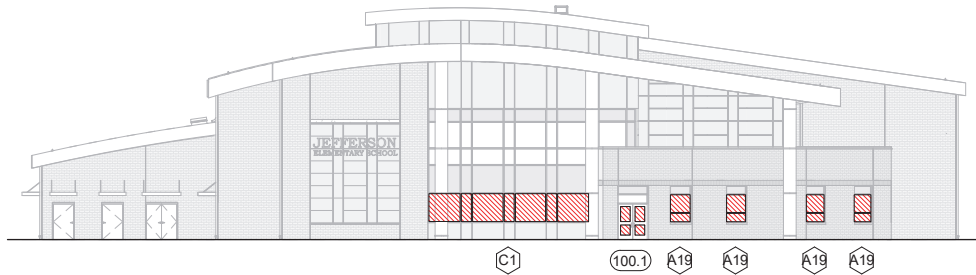
**NOTE:** NO SECURITY LAMINATION IS TO BE PROVIDED AS PART OF BASE BID WORK.

ARCHITECT'S PROJECT NO. **1807-244** DATE: **02/17/20**  
TYPE OF DRAWING NO. **ADD2-A1**

21 SE Third Street,  
Suite 800  
Evansville, IN 47708  
T: 812.422.4187  
F: 812.421.6776  
www.haferdesign.com  
**HAFER**  
architects • designers • engineers

**JEFFERSON ELEMENTARY  
NEW ELEMENTARY SCHOOL**  
800 S Alves St. Henderson, KY 42420

ALT #6



2 WEST ELEVATION  
3/64" = 1'-0"



1 SOUTH ELEVATION  
3/64" = 1'-0"

**LEGEND :**

 GLAZING TO RECEIVE SECURITY LAMINATION AS PART OF ALTERNATE #6 WORK.

**NOTE:** NO SECURITY LAMINATION IS TO BE PROVIDED AS PART OF BASE BID WORK.

ARCHITECT'S PROJECT NO. 1807-244  
DATE: 02/17/20  
TYPE OF DRAWING NO. ADD2-A2

JEFFERSON ELEMENTARY  
NEW ELEMENTARY SCHOOL  
800 S Alves St. Henderson, KY 42420

HAFFER  
architects • designers • engineers  
21 SE Third Street,  
Suite 800  
Evansville, IN 47708  
T: 812.432.4187  
F: 812.421.6776  
www.hafferdesign.com

ALT #6