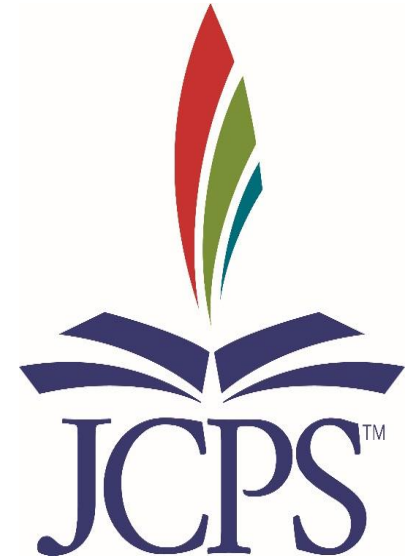


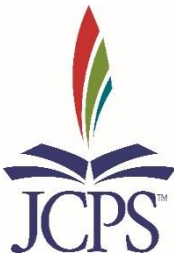
New Middle School 2605 Echo Trail



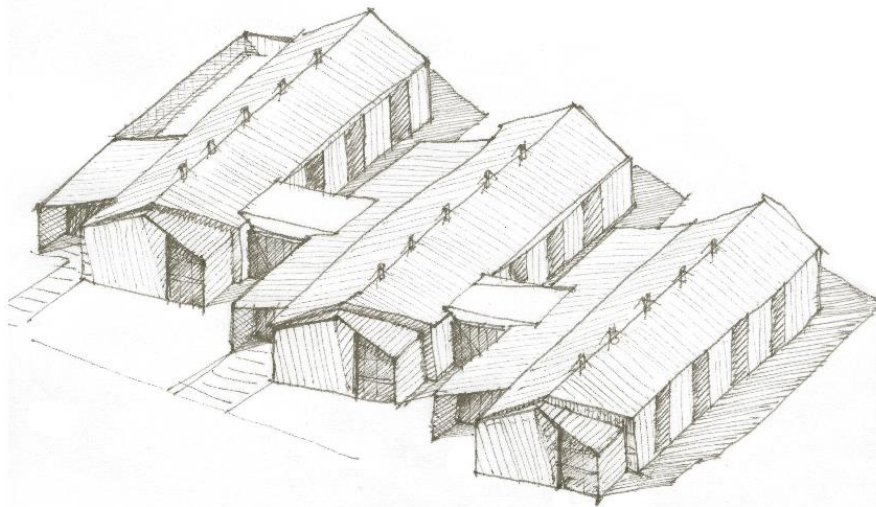
*Jefferson County Board of Education
March 10, 2020*

Project Approval

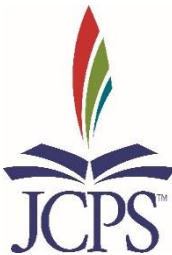
1. Approval to construct school
2. Purchase of land



School Information

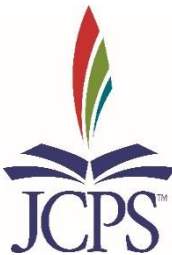


PEELED SCHEME
JCPS - NEW MIDDLE SCHOOL

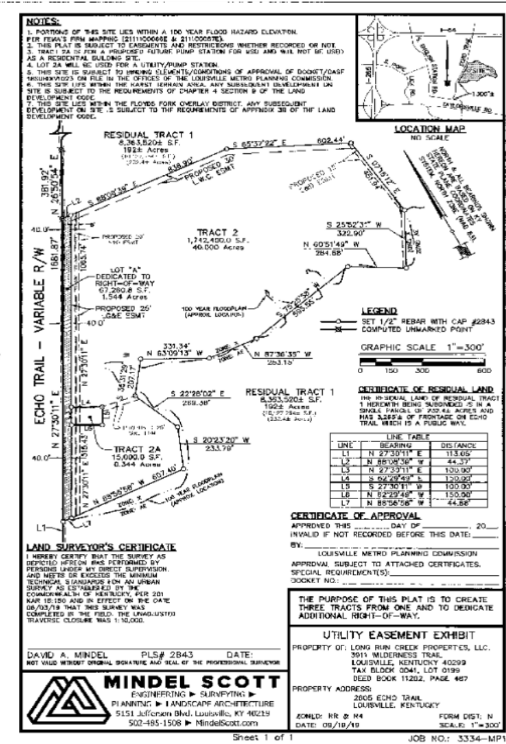
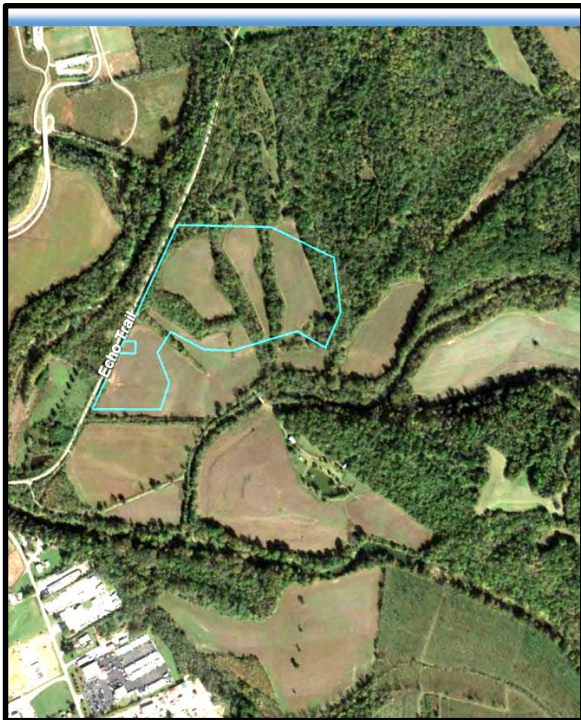


School Information

- Enrollment of approximately 1000
- Projected school opening in Fall of 2022
- Included in District's Long Range Building Plan (6/2017)



Site Information





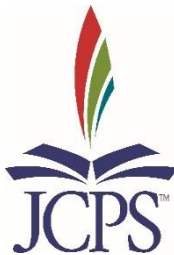
MINDEL SCOTT

JCPS MIDDLE SCHOOL SITE

#3334
Louisville, Kentucky
February, 2020

Site Information

- 40 Acres of Land at 2605 Echo Trail
- Purchase price includes the cost for constructing sewers
- Adequate size for a middle school and possibly an additional school if a need arises in the future
- Echo Trail is of adequate width to support bus traffic
- JCPS is working with Louisville Metro Public Works and state representatives to encourage road/intersection improvements.



Environmental Considerations

Stormwater

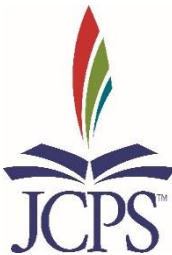
- Construction of a detention basin
- Containment of construction sediment

Floodplain

- No development in the Long Run Creek floodplain
- No downstream impacts
- MSD review of plan on behalf of Kentucky Division of Water

Water Quality

- Project will meet or exceed MSD water quality requirements
- Stormwater runoff from parking lot will be filtered



Environmental Considerations

Vegetation

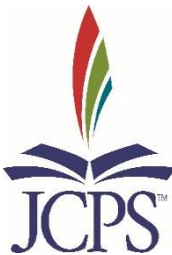
- Building and lots placed in the open and level areas of the property to minimize tree removal

Ecological

- Impact on streams and wetlands will be less than lowest threshold for required mitigation

Energy Use

- Geothermal HVAC system
- Outdoor air unit with Energy Recovery
- Demand control ventilation
- LED lighting
- Insulated concrete forms used on exterior walls
- East-West classroom orientation



Next Steps

- The Kentucky Department of Education requires a BG-1 to be submitted prior to proceeding with the next phase of design for the project
- A BG-1 for construction and contract for land purchase are submitted for approval
- Property closing within 60 days of approval
- Continue to develop and design school- Submit to KDE for reviews
- Submit plan to Metro Louisville Planning and Zoning for a Community Facility Review
- Pending all reviews and approvals, construction to start in Fall of 2020

