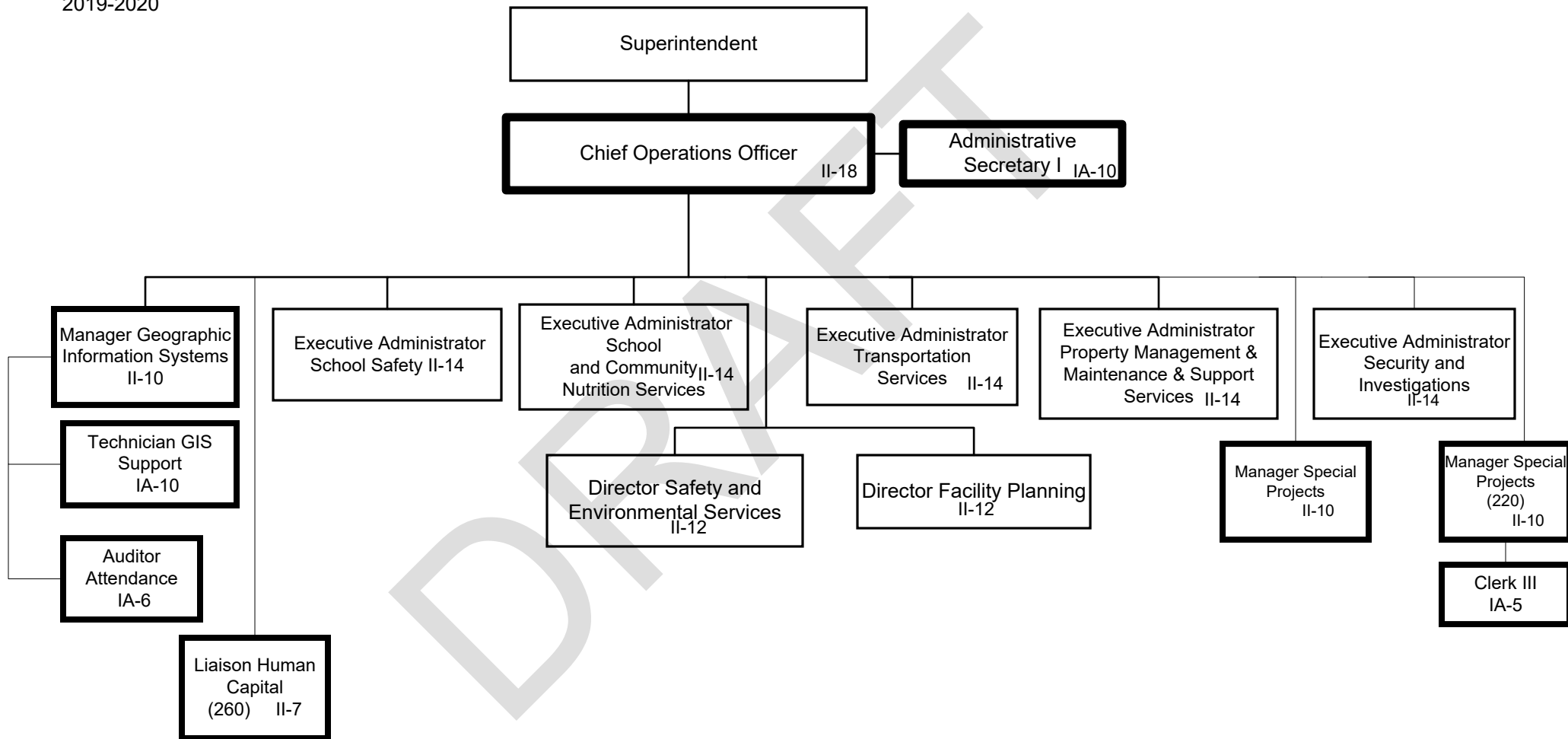


1. Add Executive Administrator School Safety

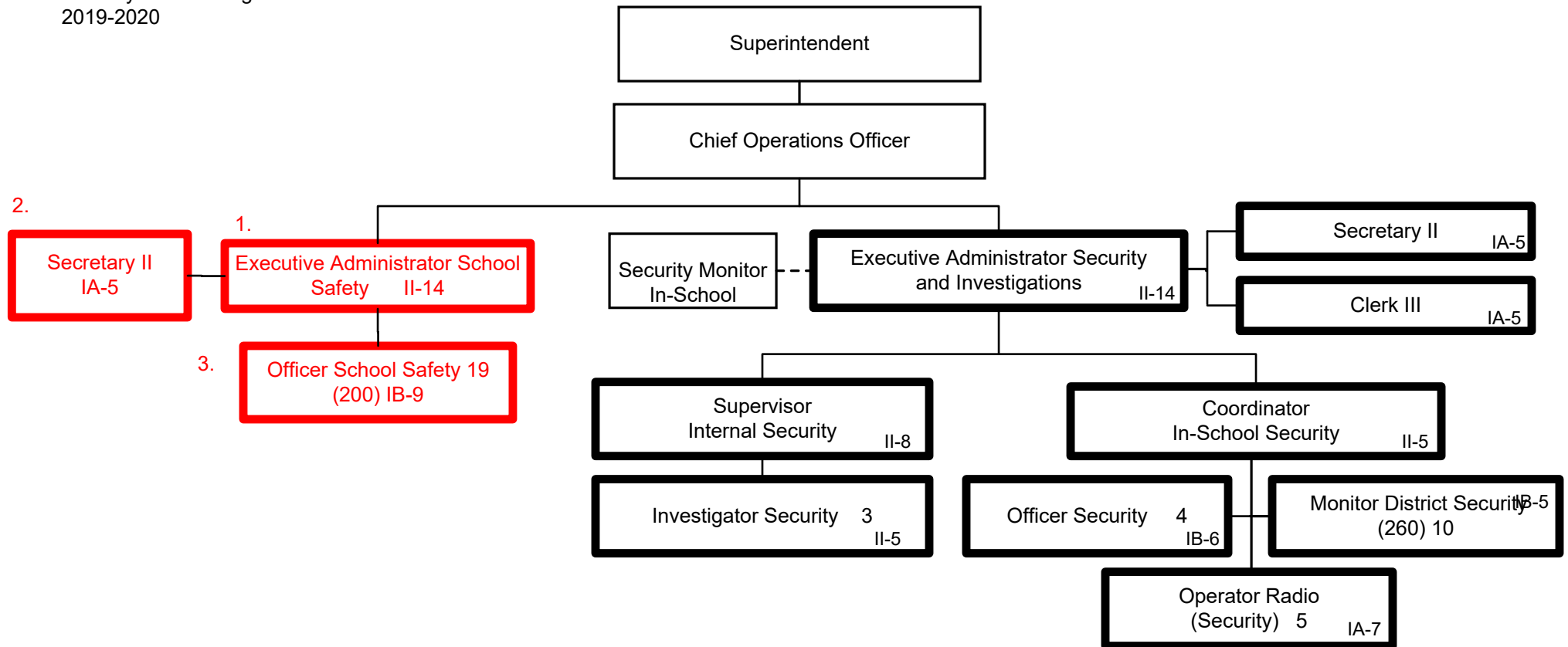
Summary:

General Fund Positions: 9
Categorical Fund Positions: 0



Summary:

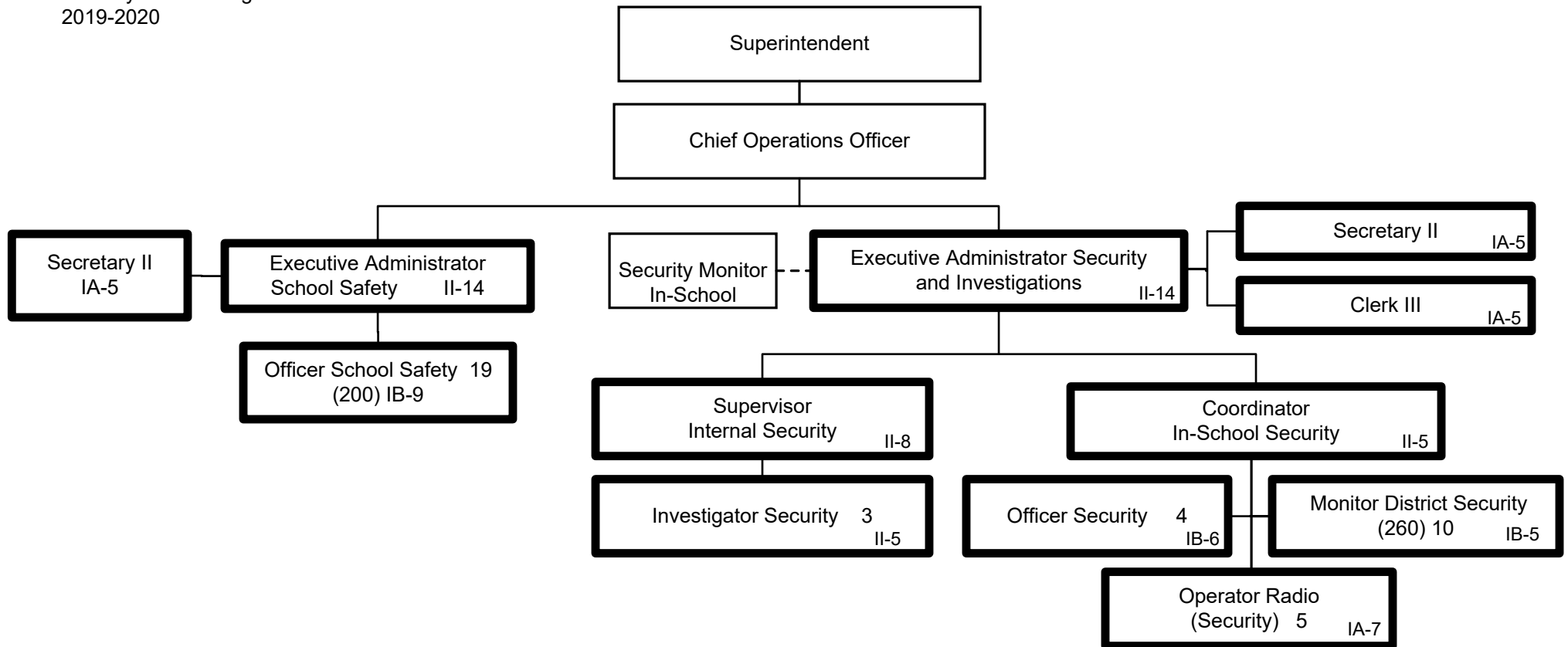
General Fund Positions: 9
Categorical Fund Positions: 0



1. Add Executive Administrator School Safety
2. Add Secretary II
3. Add 19 Officer School Safety

Summary:

General Fund Positions: 27 48
Categorical Fund Positions: 0



Summary:

General Fund Positions: 48
Categorical Fund Positions: 0