

Gender Disability Category (may select >1)

Ethnicity (may select >1) High School Exit

1 of 1 Find | Next

Education by Employment Tables

2018 YOYO [2016-2017 school leavers]

Employment and Education categories use the federal Office of Special Education Programs (OSEP) definitions shown below. The gold highlighted box is the "Not Engaged" category showing the number of respondents who are not in any of the OSEP Employment or Education categories.

KENTUCKY	Competitive Employment	Other Employment	No Employment	Education Totals
Higher Education	186 (7.3%)	71 (2.8%)	198 (7.8%)	455 (18.0%)
Other Education	78 (3.1%)	19 (0.7%)	72 (2.8%)	169 (6.7%)
No Post-Secondary Education	975 (38.5%)	162 (6.4%)	773 (30.5%)	1910 (75.4%)
Employment Totals	1239 (48.9%)	252 (9.9%)	1043 (41.2%)	2534 (100.0%)

HIGHER EDUCATION means:
enrolled full- or part-time
in a community college (2-year program) or
college/university (4- or more year program)
for at least one complete term
at any time in the year since leaving high school

OTHER EDUCATION means:
enrolled on a full- or part-time basis
for at least 1 complete term
in an education or training program (e.g.
Corps, adult education, or technical school
is less than a 2-year program)
at any time in the year since leaving high school

COOP: NKEC	Competitive Employment	Other Employment	No Employment	Education Totals
Higher Education	23 (11.5%)	8 (4.0%)	9 (4.5%)	40 (20.0%)
Other Education	9 (4.5%)	4 (2.0%)	12 (6.0%)	25 (12.5%)
No Post-Secondary Education	93 (46.5%)	8 (4.0%)	34 (17.0%)	135 (67.5%)
Employment Totals	125 (62.5%)	20 (10.0%)	55 (27.5%)	200 (100.0%)

COMPETITIVE EMPLOYMENT means:
at or above the minimum wage
with others who are nondisabled
for an average of 20 hours a week
for a total of at least 90 days
(includes military employment)
at any time in the year since leaving high school

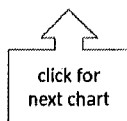
OTHER EMPLOYMENT means:
have worked for pay or been self-employed
for a total of at least 90 days
(including work in a family business, farm,
ranching, catering services, etc.)
at any time in the year since leaving high school

DISTRICT: NEWPORT INDEPENDENT	Competitive Employment	Other Employment	No Employment	Education Totals
Higher Education	1 (6.3%)	1 (6.3%)	0 (0.0%)	2 (12.5%)
Other Education	2 (12.5%)	2 (12.5%)	2 (12.5%)	6 (37.5%)
No Post-Secondary Education	3 (18.8%)	2 (12.5%)	3 (18.8%)	8 (50.0%)
Employment Totals	6 (37.5%)	5 (31.3%)	5 (31.3%)	16 (100.0%)

Gender filter selected: <ALL>

Disability filter selected: <ALL>

Ethnicity filter selected: <ALL>



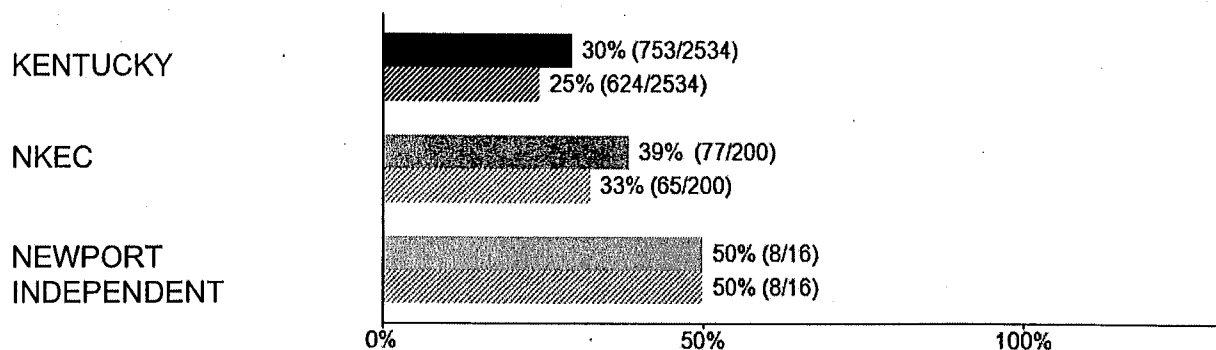
Educatio YOYO 2018

Post-Secondary Education & Completed One Term

Asked of all respondents.

From the time you left high school until now, have you been in any type of school or training program? [solid bars]

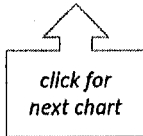
Did you complete an entire term/semester? [striped bars]



For **KENTUCKY**, 68% (509/753) of those who went on to any kind of post-secondary education *lived with their family* while at school, and 44% (334/753) contacted the *Disability Service Coordinator (DSC)* at their school or training program.

For **NKEC**, 74% (57/77) *lived at home* and 44% (34/77) contacted the DSC.

For **NEWPORT INDEPENDENT**, 63% (5/8) *lived at home* and 25% (2/8) contacted the DSC.



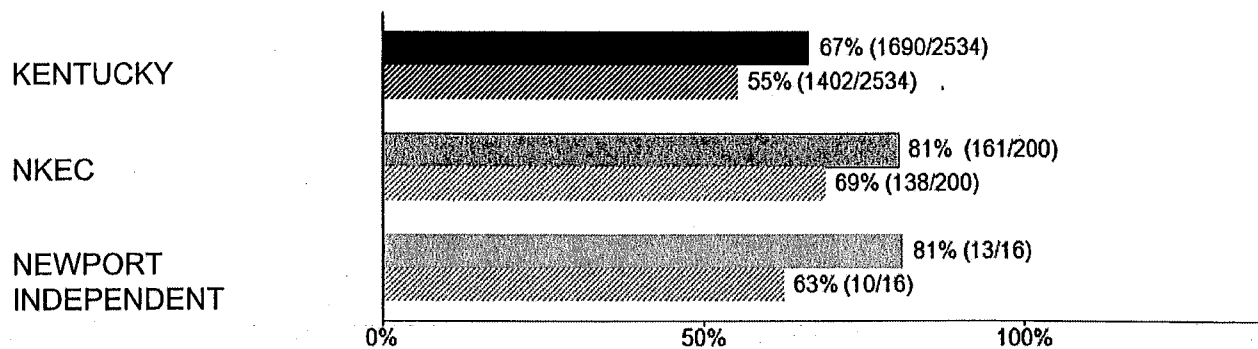
Employment YOYO 2018

Employed, & Still Employed

Asked of all respondents:

From the time you left high school until now, have
you ever had a paying job? [solid bars]

Are you still working? [striped bars]



Employment Supports & Satisfaction

YOYO 2018

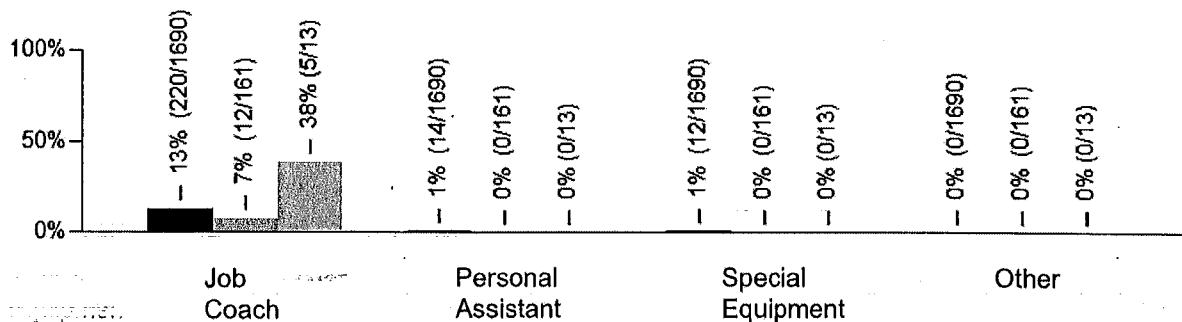
Employment Supports

Asked of all respondents who said they had worked for pay at some point in the past year.

Do you/Did you receive any of the following supports/accommodations at this job?

[Check All That Apply question; respondents can choose more than one answer, or none.]

KENTUCKY
NKEC
NEWPORT
INDEPENDENT



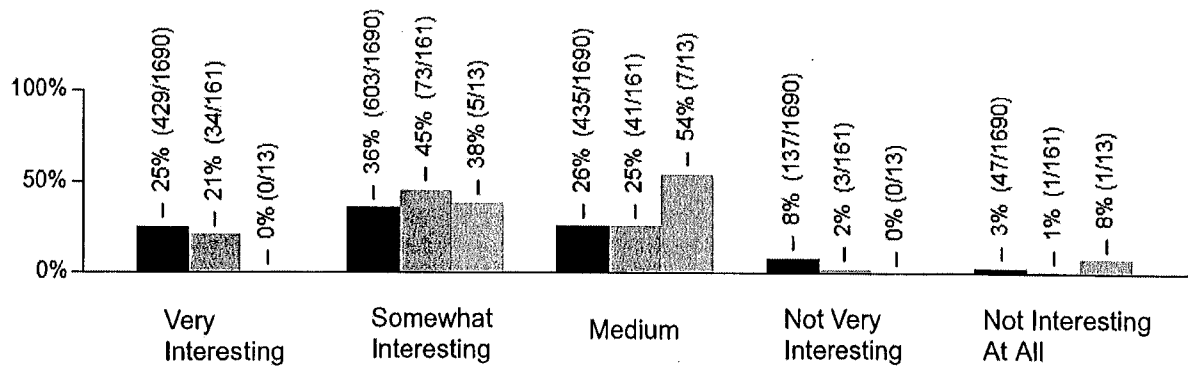
Interesting Job

Asked of all respondents who said they had worked for pay at some point in the past year.

On a 5-point scale from "Very interesting" to "Not interesting at all", how interesting do you/did you think your job is/was?

KENTUCKY
NKEC
NEWPORT
INDEPENDENT

*Totals may not equal exactly 100% due to a small number of people who did not answer.



Community Participation

YOYO 2018

Residence

Asked of all respondents.

Where did you live for most of last year?

KENTUCKY

With my family: 79% (2003/2534)

Independent living: 19% (494/2534)

by myself 4% (104/2534)

with friends 4% (103/2534)

with partner 6% (142/2534)

in a dorm 6% (145/2534)

Other: 1% (36/2534)

foster family 0% (8/2534)

group home 0% (3/2534)

homeless 0% (5/2534)

jail 1% (14/2534)

blank 0% (6/2534)

NKEC

With my family: 85% (170/200)

Independent living: 14% (28/200)

by myself 3% (6/200)

with friends 5% (9/200)

with partner 3% (6/200)

in a dorm 4% (7/200)

Other: 1% (2/200)

foster family 0% (0/200)

group home 0% (0/200)

homeless 0% (0/200)

jail 1% (1/200)

blank 1% (1/200)

NEWPORT INDEPENDEN

With my family: 63% (10/16)

Independent living: 38% (6/16)

by myself 0% (0/16)

with friends 31% (5/16)

with partner 6% (1/16)

in a dorm 0% (0/16)

Other: 0% (0/16)

foster family 0% (0/16)

group home 0% (0/16)

homeless 0% (0/16)

jail 0% (0/16)

blank 0% (0/16)



Drive

Asked of all respondents.

Do you have a driver's license?

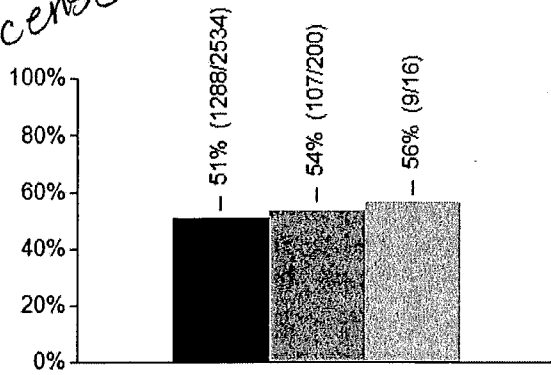
Vote

Asked of all respondents.

Are you registered to vote?

KENTUCKY
NKEC
NEWPORT
INDEPENDENT

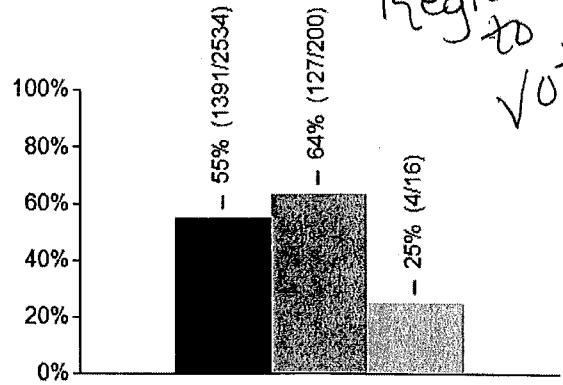
*DRIVER'S
license*



Percent Answering Yes



*Registered
to
Vote*



Percent Answering Yes

