



FIELD OBSERVATION REPORT

East Hardin Middle School, Hardin County Schools, Elizabethtown, KY 201752.01 -CA8

Date: 12/30/2019

Time: 1:30 PM ET

Weather: 38/ sunny

Observed by: Joseph Jones

Report No: 14

Est. Completion: 31%

Present on Site:

Doyle Gibson (Superintendent - Alliance Corp.), Concrete Crew, General Trades, Masons, Electricians, Plumbers

1. Work in Progress

- a. The concrete crew was erecting the form work for the concrete beam at the northwest corner of Area A.
- b. Masons were laying block in Area B.
- c. General trades were installing hollow metal door frames as the masons laid up block walls.
- d. Electricians and plumbers were installing rough-ins as the masons laid up block walls.

2. General Observations

- a) The weather was cool, dry and breezy. Rain from Sunday had left the soils wet and muddy and ponding on the slabs. Temperatures were 40 and above today and were suitable for masonry work as long as specified cold weather procedures were followed. Christmas week was unseasonably warm and was also dry. This week the forecast is for wet weather after New Year's Day. The weather is predicted to be rainy with seasonable temperatures next week.

Doyle said now that the Gym walls are topped out, the roof joist will be placed on Thursday. After the joist are in place, the metal decking can be installed. The steel roof framing to the east of the Gym over the north-south corridor is in place.

He said that the temporary covers placed over the corridor slabs permitted Whittenburg to warm the slabs to the required temperature to lay the Skudo system.

He also said that the severe wind during the early hours of this morning, caused some of the Skudo boards to become dislodged. As a temporary measure, Whittenburg has placed concrete block on the board. Doyle said that when the block walls are laid on either side of the Skudo board, the block will no longer be required. The missing portions of the Skudo system need to be replaced and repaired.

A large crew of masons and their helpers were laying block walls in Area D. Doyle said the goal is to lay block in two story areas so precast concrete planks can be installed after the block reaches the required structural strength. Electricians and plumbers were

JRA Architects

3225 Summit Square Place, Suite 200 Lexington, KY 40509
Tel: 1-859 252-6781 Fax: (859) 255-5483 www.jrarchitects.com

installing rough ins in the walls ahead of the masons. The general trades crew had set hollow metal door frames ahead of the masons laying block in the areas.

- b) The mock wall needs to have the windows, metal trim, sealants, metal roofing and all other items indicated on the drawings added so that it can be evaluated for work quality.



- c) The tall Gym enclosure is laid up to roof joist bearing elevation. The steel roof framing is in place on the east side of the Gym enclosure.



JRA Architects

3225 Summit Square Place, Suite 200 Lexington, KY 40509
Tel: 1-859 252-6781 Fax: (859) 255-5483 www.jrarchitects.com

- d) The Skudo system was installed in area other than Area D where the scaffolding was in place. It will be installed there as soon as the scaffolding is removed. The scaffolding was being disassembled while I was on site. The severe winds that occurred early this morning dislodged some of the Skudo system. Whittenburg has anchored the system with concrete block placed on top of the system. Missing parts of the system will need to be replaced.



- e) The north wall of the Gym is now in place, totally enclosing the Gym. Because the slab is recessed, the heavy rain on Sunday left water up to the surrounding slab elevations. A good deal of mud remains within the Gym area. When the weather improves, this needs to be cleaned.



JRA Architects

3225 Summit Square Place, Suite 200 Lexington, KY 40509
Tel: 1-859 252-6781 Fax: (859) 255-5483 www.jrarchitects.com

- f) Block work was proceeding in Area B at the southeast corner of the building. This area consists of two stories of classroom space. The block will be laid up to the bearing elevation for the precast concrete planks that form the floor structure for the second floor.



- g) The general trades crew had set hollow metal door frames ahead of the masons laying block walls. The frames were being checked for plumb as the walls were being laid.



JRA Architects

3225 Summit Square Place, Suite 200 Lexington, KY 40509
Tel: 1-859 252-6781 Fax: (859) 255-5483 www.jrarchitects.com

- h) Plumbers were installing piping and rough ins ahead of the mason laying the block walls.



- i) An electrician was installing in wall conduits and boxes ahead of the masons laying the block walls.



- j) Steel roof framing was in place for the roof over the north-south corridor to the east of the Gym.



JRA Architects

3225 Summit Square Place, Suite 200 Lexington, KY 40509
Tel: 1-859 252-6781 Fax: (859) 255-5483 www.jrarchitects.com

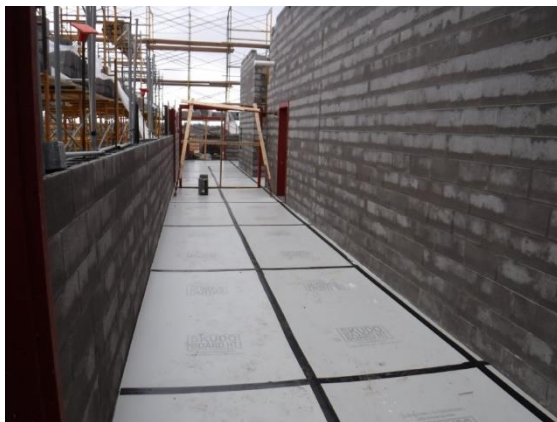
- k) The double hollow metal frame at the Kitchen/Cafeteria has been welded together and installed.



- l) Whittenburg was erecting the forms for the concrete beam at the northwest side of Area A.



- m) The block walls in Area D are acceptable. They will need to be detailed and cleaned. Make sure that all trash is removed from the walls.



JRA Architects

3225 Summit Square Place, Suite 200 Lexington, KY 40509
Tel: 1-859 252-6781 Fax: (859) 255-5483 www.jrarchitects.com

n) Stored Material:

- a. Block, mortar and masonry materials.
- b. Plumbing piping and accessories.
- c. Conduits and electrical boxes.
- d. Reinforcing bars and wire.
- e. Galvanized steel imbeds.
- f. Steel roof joists.

o) Follow up items:

- a. Develop a plan to repair slabs that are scheduled to be polished and submit to all for approval.
- b. Preparations for mockup slab and color options. The mockup wall must have all components indicated on the drawings for the wall and all components for the actual walls in the building. This is to allow JRA to review compliance with the details of construction of the wall.
- c. Maintain the Skudo system so that it protects the corridor slabs.

Follow up by:

☐ Architect, ☐ Owner, ☐ MEP Engineer, ☐ Structural Engineer, ☐ Civil Engineer
☒ Contractor, ☐ Other

Respectfully submitted,
Joseph Jones, AIA
JRA Architects

Cc: 201752.01, CA8