



Kentucky Department of

Our Children,

Our Commonwealth

Education

Kentucky Board of Education

Operations and Management

October 2, 2019



Presentation by the Kentucky Department of Education: Kentucky Facilities Inventory and Classification System (KFICS)

Robin Fields Kinney
Associate Commissioner
Office of Finance and Operations

Donna E. Duncan
Division Director
District Support

Kentucky Facilities Inventory and Classification System (KFICS)

- ❖ KRS 157.420(9) establishes the legislative foundation for KFICS
2011 Parsons Report was the initial response to the legislative requirement, but funding was not ongoing and the data became static
- ❖ 2016 HB 303 Budget provided funding to implement KFICS
 - Goal to establish a sustainable assessment process of the physical condition of school buildings using industry standard methodology
 - Include processes (and tools) to collect, integrate, and maintain assessment data with facility planning and construction processes
 - Include Quality Assurance component for KDE to ensure data integrity and validate assessment results
- ❖ 2018 HB 200 Budget provided continued funding for KFICS

What Facilities are Included in KFICS?

2016 HB 303 Budget Part I C 2 (6) Established the Criteria:

(6) Review of the Classification of Primary and Secondary School Buildings

Included in the KDE Operations General Fund appropriation is \$2,000,000 in each fiscal year to implement KRS 157.420(9) and (10).

- Only schools classified as A1, A2, A3, A4, A5, A6, C2, and D1 shall be included in the evaluation process. KDE may limit the school buildings included based on the time lapsed since the building's construction or last major renovation as defined in 702 KAR 4:160.
- KDE shall provide an updated list of school buildings evaluated by the process to the Legislative Research Commission by October 1, 2017, and an updated list thereafter by October 1 of each odd-numbered year.

2018 HB 200 Part 1 C 2 (4) retained the same criteria and allotted \$600,000 per fiscal year of the department's general funds appropriations for the review.

KFICS – Phase 1 (March – December 2017)

Kentucky Facilities Inventory & Classification System

- 169 districts (including KSB & KSD) conducted a condition assessment on 1 school building
 - 66 audits conducted by district personnel

School Type	#
Elementary School	76
Middle School	30
High School	45
PS – K – 8	3
PS – K – 12	9
Alternative School	2
Area Technology Center	4
Did not participate	6

KFICS – 2019 Improvements

- AssetPlanner system updated
 - Additional data validation with cost constraints put in place – limits ‘gaming’
 - Building Sections (additions) modeled to track age of systems
 - Publishing of data restricted to KDE
 - Floor plans pertinent to completing building inventories

- Status Report – allows for districts to track progress

Facility Name	AUDITS				SPACES SURVEYS			SITE SURVEYS			CPTED SURVEYS		
	In Process	ASG QA/QC Review	KDE QA/QC Review	Published	In Process	KDE QA/QC Review	Published	In Process	KDE QA/QC Review	Published	In Process	KDE QA/QC Review	Published
Bernheim Middle School (Facility)				1			1			1			1
Brooks Elementary School (Facility)				1			1			1			1
Bullitt Alternative Center (Facility)			1			1			1			1	
Bullitt Central High School (Facility)			1			1			1			1	
Bullitt County Area Technology Center (Facility)			1			1			1			1	
Bullitt County Crossroads Elementary School (Facility)			1				1			1			1
Bullitt County Freedom Elementary School (Facility)				1			1			1			1

KFICS – 2019 Current Status

Building assessments and educational suitability surveys are proceeding.

➤ Data Collection

- AssetPlanner system available for all districts and KDE
- AuditPlanner and SpacePlanner applications for mobile devices allow for onsite data collection

➤ Quality Assurance & Quality Control Reviews

- Ameresco assisting KDE with reviews
- Ensures KDE criteria utilized
- KDE publishes data once district work is complete

➤ Communications for district status of progress sent regularly

- Audit Survey Tracker Status Report – allows for districts to track progress

➤ 2019 Ranked Report available in October

- It can be generated ‘on demand’ with additional building assessments included

State Report Comparisons

Data Presented	2011 Parsons	2017 Ameresco	2019 Ameresco
Ranked School Buildings (worst to best)	✓	✓	✓
3 Reports (by School Classification)			✓
Year Built / GSF / SAAR Enrollment	✓	✓	✓*
Kentucky School Score	✓	✓	✓
Condition Score (FCI)	✓	✓	✓
Educational Suitability Score	✓	Phase 2	✓
Technology Readiness Score	✓	Not Needed	Not Needed
Repair / Replacement Cost of Deficiencies	✓	✓	
Replacement Cost of Deficiencies			✓
Building Replacement Cost	✓	✓	✓

District Engagement

KDE & Ameresco have provided multiple levels of communications to districts in 2018 & 2019

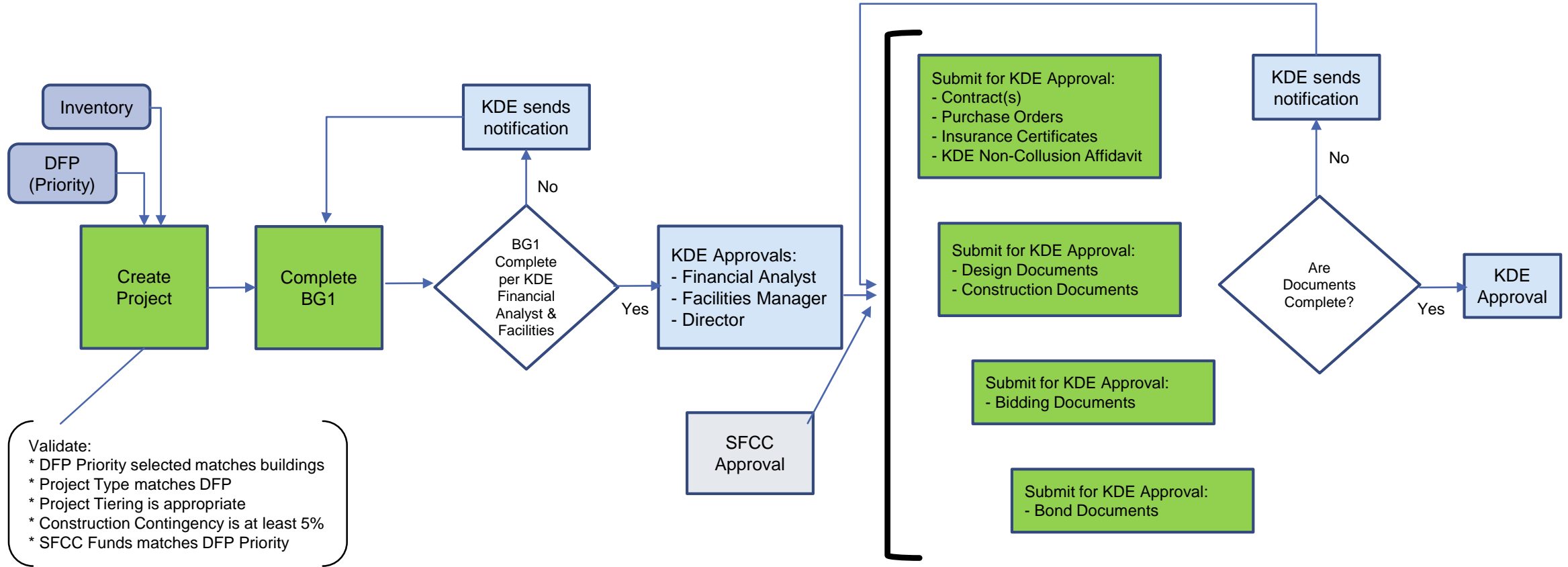
	#
Regional Co-Op Meetings	9
Commissioner Messages	6
Training Sessions	13
How-To Videos	9
Architect memos	1
Mass Email to all districts	1

Multiple individual emails sent to districts and their architects. Also numerous meetings with district and architects to discuss KFICS implementation on an individual district basis.

Facilities Construction Process

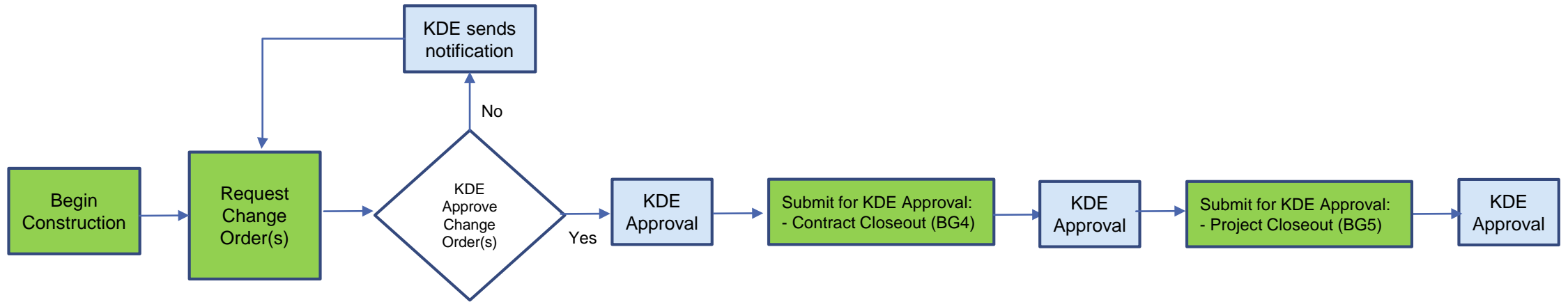
- ▶ **KRS 162.060** requires that the chief school officer shall examine or cause to be examined all plans and specifications for public school buildings in accordance with administrative regulations (702 KAR 4:160 and 702 KAR 4:170)
- ▶ **702 KAR 4:160 Capital Construction Process**
 - Establishes forms to be used by the districts and their architects throughout the construction process
 - KDE uses an automated workflow process- the Facilities Planning and Construction (FACPAC) system to manage the workflow and keep the districts informed of the status of KDE's reviews
 - Beginning in April 2018, KDE adopted four tiers for construction projects that adapts the review to the risks inherent in a project (e.g., type, size and funding)

Pre Construction Process Flow



**All district submissions to KDE require local board approval.
FACPAC system streamlined the process, allowing for transparency and district ownership of data.**

Construction Process Flow



All district submissions to KDE require local board approval.

District Facilities Branch Challenges

Staffing

One branch manager, four staff architects, one analyst

Recently added one architect, which will help, but still trying to manage 1,492 active projects with a small staff

Workload

Review DFPs (New and Amended); including district planning process, KFICS inventory development

Review construction project documents

Review real property acquisitions

Review surplus property transactions

New Initiatives Impact

2019 SB 1

KFICS Implementation

Questions?

Robin Fields Kinney

Associate Commissioner

Office of Finance and Operations

502/564-1976

Robin.Kinney@education.ky.gov

Donna E. Duncan

Division Director

District Support

502/564-3930

Donna.Duncan@education.ky.gov