



Board Packet

August 22, 2019



KYMEA COMMITTEE CALENDAR

2019

January

July

February

August

March

September

15th IRC Committee
20th BROC Committee

20th IRC Committee
26th BROC Committee

April

October

23rd Compensation
Committee

May

November

19th Budget Committee
20th Compensation
Committee

June

December

13th IRC Committee
27th BROC Committee

11th Budget Committee
11th AR Committee
13th IRC Committee
18th BROC Committee

JANUARY

S	M	T	W	T	F	S
		1	2	3	4	5
6	7	8	9	10	11	12
13	14	15	16	17	18	19
20	21	22	23	24	25	26
27	28	29	30	31		

MAY

S	M	T	W	T	F	S
			1	2	3	4
5	6	7	8	9	10	11
12	13	14	15	16	17	18
19	20	21	22	23	24	25
26	27	28	29	30	31	

SEPTEMBER

S	M	T	W	T	F	S
1	2	3	4	5	6	7
8	9	10	11	12	13	14
15	16	17	18	19	20	21
22	23	24	25	26	27	28
29	30					

FEBRUARY

S	M	T	W	T	F	S
					1	2
3	4	5	6	7	8	9
10	11	12	13	14	15	16
17	18	19	20	21	22	23
24	25	26	27	28		

JUNE

S	M	T	W	T	F	S
						1
2	3	4	5	6	7	8
9	10	11	12	13	14	15
16	17	18	19	20	21	22
23	24	25	26	27	28	29
30						

OCTOBER

S	M	T	W	T	F	S
		1	2	3	4	5
6	7	8	9	10	11	12
13	14	15	16	17	18	19
20	21	22	23	24	25	26
27	28	29	30	31		

MARCH

S	M	T	W	T	F	S
					1	2
3	4	5	6	7	8	9
10	11	12	13	14	15	16
17	18	19	20	21	22	23
24	25	26	27	28	29	30
31						

JULY

S	M	T	W	T	F	S
	1	2	3	4	5	6
7	8	9	10	11	12	13
14	15	16	17	18	19	20
21	22	23	24	25	26	27
28	29	30	31			

NOVEMBER

S	M	T	W	T	F	S
					1	2
3	4	5	6	7	8	9
10	11	12	13	14	15	16
17	18	19	20	21	22	23
24	25	26	27	28	29	30

APRIL

S	M	T	W	T	F	S
	1	2	3	4	5	6
7	8	9	10	11	12	13
14	15	16	17	18	19	20
21	22	23	24	25	26	27
28	29	30				

AUGUST

S	M	T	W	T	F	S
				1	2	3
4	5	6	7	8	9	10
11	12	13	14	15	16	17
18	19	20	21	22	23	24
25	26	27	28	29	30	31

DECEMBER

S	M	T	W	T	F	S
1	2	3	4	5	6	7
8	9	10	11	12	13	14
15	16	17	18	19	20	21
22	23	24	25	26	27	28
29	30	31				



Committee Members	Term Limit Expiration	Next Election	Meeting Frequency
Officers			
Ron Herd (Chairman)	May 23, 2021	May 23, 2021	
Josh Callihan (Vice Chairman)		May 23, 2021	
Chris Melton (Secretary)		May 23, 2021	
Kevin Howard (Treasurer)		May 23, 2021	
Executive Committee			As Needed
Ron Herd (Chairman)		May 23, 2021	
Josh Callihan (Vice Chairman)		May 23, 2021	
Chris Melton (Secretary)		May 23, 2021	
Kevin Howard (Treasurer)		May 23, 2021	
All Requirements Project Committee			December - February
Chris Melton (Chairman)	All AR Directors hold a seat	May 23, 2021	December: Present prelim rates
All AR Directors			January: Complete committee changes
KYMEA CEO (non-voting)			February: Committee rates approval
KYMEA CFO (non-voting)			March: Present AR Rates to Board
Board Risk Oversight Committee (BROC)			Quarterly
Gary Zheng (Chairman)		May 23, 2021	
Tim Lyons		May 23, 2021	
KYMEA CEO			
KYMEA CFO			
KYMEA Legal Counsel			
Internal Risk Committee (IRC)			Quarterly
KYMEA CEO (Chairman)			
KYMEA VP of Market Analytics			
KYMEA CFO			
KYMEA Legal Counsel			
Budget Committee			November - January
Chris Melton (Chairman)		May 23, 2021	November: present prelim to committee
Josh Callihan		May 23, 2021	December: Complete committee changes
Mike Withrow		May 23, 2021	January: Committee Approval of Budget
KYMEA CEO (non-voting)			February: Complete board changes
KYMEA CFO (non-voting)			
Compensation Committee			October - December
Ron Herd (Chairman)		May 23, 2021	December: Present CEO Compensation to the
Josh Callihan		May 23, 2021	
Chris Melton		May 23, 2021	
Kevin Howard		May 23, 2021	
KYMEA Legal Counsel (non-voting)			
FERC Litigation Committee			October - December
Chris Melton			Working group during FERC litigation
Gary Zheng (Chairman)			
Tim Lyons			
KYMEA CEO			
KYMEA CFO			
KYMEA Legal Counsel			



KENTUCKY MUNICIPAL ENERGY AGENCY

August 22, 2019	Committee Reports	Administration Reports	Discussion Topics	Action Items
		CEO	PURPA	
		Finance and Accounting	Legislative update	
		Market Analytics	KYMEA Distribution Services	
		Member Communications	Planning Process	

September 26, 2019	Committee Reports	Administration Reports	Discussion Topics	Action Items
	BROC	CEO		Strategic Plan Approval
		Finance and Accounting		
		Market Analytics		
		Member Communications		

October 23, 2019	Committee Reports	Administration Reports	Discussion Topics	Action Items
	Budget	CEO	Budget	
	Compensation	Finance and Accounting	Compensation	
		Market Analytics		
		Member Communications		

November 20, 2019	Committee Reports	Administration Reports	Discussion Topics	Action Items
	Budget	CEO		
	Compensation	Finance and Accounting		
		Market Analytics		



KENTUCKY MUNICIPAL ENERGY AGENCY

		Member Communications		
--	--	-----------------------	--	--

December 18, 2019	Committee Reports	Administration Reports	Discussion Topics	Action Items
	AR Project	CEO		
	BROC	Finance and Accounting		
	Budget	Market Analytics		
	Compensation	Member Communications		

January 23, 2019	Committee Reports	Administration Reports	Discussion Topics	Action Items
	AR Project	CEO		
	Budget	Finance and Accounting		
		Market Analytics		
		Member Communications		

February 27, 2020	Committee Reports	Administration Reports	Discussion Topics	Action Items
	AR Project	CEO		
	Budget	Finance and Accounting		
		Market Analytics		
		Member Communications		

*** This calendar is intended for planning purposes and may be changed at any time.**



KENTUCKY MUNICIPAL ENERGY AGENCY

Notice of Meeting of the KYMEA Board of Directors

Location: 1700 Eastpoint Pkwy. Ste 220, Louisville, KY 40223

Thursday, August 22, 2019, 10 AM

A. Meeting Opening

- A.1 Attendance
- A.2 Guest Introductions
- A.3 Call to Order

B. Meeting Minutes

C. Financial Reports

D. Committee Reports

- D.1 AR Committee Workshop Report

E. Administration Reports

- E.1 CEO
- E.2 Finance & Accounting
- E.3 Member Communications

F. Discussion Topics

- F.1 PURPA
- F.2 Legislative Update
- F.3 KYMEA Distribution Services
- F.4 Planning Process

G. Action Items

- None expected

H. Public Comments

I. Upcoming Meetings & Other Business

J. Closed Session

- J.1 Market Report/Hedging Strategy
- J.2 Other topics



K. Actions Related to Closed Session

L. Adjournment

Meeting Minutes





Meeting Minutes of the KYMEA Board of Directors

Location: Courtyard by Marriott, 2254 South Hwy 27, Somerset, KY 42501
Wednesday, July 24, 2019, 1 PM

A. Meeting Opening

A.1. Attendance: Taken at 1:08 PM

Present Board Members:

Josh Callihan
Ronald Herd
Chris Melton
Kevin Crump (Proxy for Mike Withrow)
Kevin Frizzell
Kevin Howard
Gary Zheng

Absent Board Members:

Carl Shoupe
Doug Hammers
Phillip King
Ramona Williams

Staff Present:

Michelle Hixon
Heather Overby
Doug Buresh
Rob Leesman

Others Present:

Charles Musson
Pat Pace
Tim Lyons
Vent Foster
Walt Baldwin (1:33 PM)
Brad Porter
Annette DuPont-Ewing
Jeff Vance



A.2. Guest Introductions: Ron Herd welcomed our guests.

A.3. Call to Order: Chairman, Ron Herd called the meeting to order at 1:07 PM. A quorum of board members was present, and the meeting was ready to proceed with the business.

B. Meeting Minutes

B.1 Approval of the regular minutes of June 27, 2019

Motion Passed: Approval of the previous month's meeting minutes passed with a motion by Josh Callihan and second by Kevin Frizzell.

6 Yeas - 0 Nays.

Josh Callihan	Yes
Ronald Herd	Yes
Chris Melton	Yes
Mike Withrow	Yes
Carl Shoupe	Absent
Phillip King	Absent
Kevin Frizzell	Yes
Doug Hammers	Absent
Kevin Howard	Yes
Ramona Williams	Absent
Gary Zheng	Yes

C. Financial Reports

B.2 Approval of last month's Financial Reports

Motion Passed: Approval of the previous month's financial reports passed with a motion by Chris Melton and second by Josh Callihan.

6 Yeas - 0 Nays.

Josh Callihan	Yes
Ronald Herd	Yes
Chris Melton	Yes
Mike Withrow	Yes
Carl Shoupe	Absent
Phillip King	Absent



Kevin Frizzell	Yes
Doug Hammers	Absent
Kevin Howard	Yes
Ramona Williams	Absent
Gary Zheng	Yes

D. Committee Reports

There are no committee reports for this month

E. Administration Reports

E.1 CEO: Doug Buresh presented the CEO report regarding the agency's past and upcoming activities.

E.2 Heather Overby presented to the Board any current and upcoming finance and accounting activities.

E.3 Member Communications: Michelle Hixon communicated to the board any upcoming events and member activities.

F. Discussion Topics

F.1 PURPA

F.2 Legislative Update: Doug Buresh gave an update on legislative activities.

F.3 Strategic Planning: Doug Buresh discussed some detail of the Strategic Planning process and the next workshop that will be facilitated by Tim Blodgett of Hometown Connections after next month's meeting.

G. Call AR Project Committee Meeting to Order

G.1 Annual Vote

- i) Annual Update of Schedule "B" Resource Obligation Table: Doug Buresh presented the updated Schedule "B: Resource Obligation Table to the AR Project Committee.
- ii) Annual Weighted Voting Update: Doug Buresh presented the updated annual Weighted Voting to the AR Project Committee.

Motion Passed: Motion to approve the updated Resource Obligation table and annual Weighted Voting passed with a motion by Josh Callihan and a second by Ronald Herd.

5 Yeas - 0 Nays - 2 Abstained.

Josh Callihan	Yes
---------------	-----



Ronald Herd	Yes
Chris Melton	Yes
Kevin Crump	Yes
(Proxy for Mike Withrow)	
Carl Shoupe	Absent
Phillip King	Absent
Kevin Frizzell	Abstain
Doug Hammers	Absent
Kevin Howard	Abstain
Ramona Williams	Absent
Gary Zheng	Yes

G.2 Rate Schedule Modification: Doug will present rate schedule modifications to the AR Project Committee.

Motion Passed: Motion to approve the presented rate schedule modifications passed with a motion by Gary Zheng and a second by Josh Callihan.

5 Yeas - 0 Nays - 2 Abstained.

Josh Callihan	Yes
Ronald Herd	Yes
Chris Melton	Yes
Kevin Crump	Yes
(Proxy for Mike Withrow)	
Carl Shoupe	Absent
Phillip King	Absent
Kevin Frizzell	Abstain
Doug Hammers	Absent
Kevin Howard	Abstain
Ramona Williams	Absent
Gary Zheng	Yes

H. Adjourn AR Project Committee Meeting and Enter back into the KYMEA Board Meeting

Motion Passed: Motion to adjourn the AR Project Committee Meeting and enter back into the KYMEA Board Meeting passed with a motion by Josh Callihan and a second by Gary Zheng.



5 Yeas - 0 Nays - 2 Abstained.

Josh Callihan	Yes
Ronald Herd	Yes
Chris Melton	Yes
Kevin Crump	Yes
(Proxy for Mike Withrow)	
Carl Shoupe	Absent
Phillip King	Absent
Kevin Frizzell	Abstain
Doug Hammers	Absent
Kevin Howard	Abstain
Ramona Williams	Absent
Gary Zheng	Yes

I. Action Items

I.1 Annual Vote

- i) Annual Update of Schedule "B" Resource Obligation Table: Doug Buresh presented the updated Schedule "B: Resource Obligation Table to the KYMEA Board.
- ii) Annual Weighted Voting Update: Doug Buresh presented the updated annual Weighted Voting to the KYMEA Board.

Motion Passed: Motion to approve the updated Resource Obligation table and annual Weighted Voting passed with a motion by Chris Melton and a second by Kevin Frizzell.

7 Yeas - 0 Nays

Josh Callihan	Yes
Ronald Herd	Yes
Chris Melton	Yes
Kevin Crump	Yes
(Proxy for Mike Withrow)	
Carl Shoupe	Absent
Phillip King	Absent
Kevin Frizzell	Yes
Doug Hammers	Absent
Kevin Howard	Yes
Ramona Williams	Absent
Gary Zheng	Yes



I.2 Rate Schedule Modification: Doug presented rate schedule modifications to the KYMEA Board.

Motion Passed: Motion to approve the presented rate schedule modifications passed with a motion by Chris Melton and a second by Kevin Frizzell.

7 Yeas - 0 Nays

Josh Callihan	Yes
Ronald Herd	Yes
Chris Melton	Yes
Kevin Crump	Yes
(Proxy for Mike Withrow)	
Carl Shoupe	Absent
Phillip King	Absent
Kevin Frizzell	Yes
Doug Hammers	Absent
Kevin Howard	Yes
Ramona Williams	Absent
Gary Zheng	Yes

I.3 Paris Diesel Contract Amendment: Doug made a presentation to the Board about the Paris Diesel contract amendment.

Motion Passed: Motion to approve the presented Paris Diesel Contract amendment passed with a motion by Chris Melton and a second by Kevin Crump (Proxy for Mike Withrow).

7 Yeas - 0 Nays

Josh Callihan	Yes
Ronald Herd	Yes
Chris Melton	Yes
Kevin Crump	Yes
(Proxy for Mike Withrow)	
Carl Shoupe	Absent
Phillip King	Absent
Kevin Frizzell	Yes
Doug Hammers	Absent



Kevin Howard	Yes
Ramona Williams	Absent
Gary Zheng	Yes

I.4 Paducah Power Supply Contract Amendment: Doug made a presentation to the Board about the Paducah Power Supply contract amendment.

Motion Passed: Motion to approve the presented Paducah Power Supply Contract amendment resolution passed with a motion by Josh Callihan and a second by Chris Melton

7 Yeas - 0 Nays

Josh Callihan	Yes
Ronald Herd	Yes
Chris Melton	Yes
Kevin Crump	Yes
(Proxy for Mike Withrow)	
Carl Shoupe	Absent
Phillip King	Absent
Kevin Frizzell	Yes
Doug Hammers	Absent
Kevin Howard	Yes
Ramona Williams	Absent
Gary Zheng	Yes

FERC Litigation Committee: Chairman recommends the Board approve the Resolution creating a temporary FERC Litigation Committee consisting of the Chairman of the AR Project Committee, the Board Risk Oversight Committee, and KYMEA's FERC Counsel.

Motion Passed: Motion to create a temporary FERC Litigation Committee consisting of the Chairman of the AR Project Committee, the Board Risk Oversight Committee, and KYMEA's FERC Counsel. passed with a motion by Josh Callihan and a second by Chris Melton.

7 Yeas - 0 Nays

Josh Callihan	Yes
Ronald Herd	Yes
Chris Melton	Yes
Kevin Crump	Yes



(Proxy for Mike Withrow)

Carl Shoupe	Absent
Phillip King	Absent
Kevin Frizzell	Yes
Doug Hammers	Absent
Kevin Howard	Yes
Ramona Williams	Absent
Gary Zheng	Yes

J. Public Comments

This was an opportunity for members of the public to provide input to the KYMEA Board and was limited to 5 minutes per speaker. No comments were made.

K. Upcoming Meetings and Other Business

The KYMEA Board of Directors shall hold its regular meetings on the fourth Thursday of each month, except for the months of November and December when the regular meeting shall be held on the third Wednesday. The regular meetings shall convene and commence at 10:00 AM Eastern time on said dates. The regular meetings shall be held at the KYMEA Board Room, 1700 Eastpoint Pkwy, Suite 220, Louisville, Kentucky.

L. Closed Session

Closed Session Authorization for July 24, 2019 KYMEA Board Meeting

Approval to enter into Closed Session pursuant to KRS 61.810(1)(c); KRS 61.810(1)(k); KRS 61.878(1)(c) and KRS 61.878(1)(j) for the purpose of:

- (i) discussing proposed, potential or pending litigation relating to KYMEA and its members relating to transmission issues; and
- (ii) discussing the market report and KYMEA's future and potential hedging strategy

KRS 61.810(1)(c) allows for closed session for the purpose of discussing proposed, potential and pending litigation relating to the agency.

KRS 61.810(1)(k) and 61.878(1)(j) allow for closed session where presentation, discussion and review of preliminary recommendations and preliminary memoranda in which opinions are expressed or policies formulated or recommended.



Motion Passed: Motion to enter into closed session passed with a motion by Kevin Frizzell and a second by Kevin Crump (Proxy for Mike Withrow).

7 Yeas - 0 Nays

Josh Callihan	Yes
Ronald Herd	Yes
Chris Melton	Yes
Kevin Crump	Yes
(Proxy for Mike Withrow)	
Carl Shoupe	Absent
Phillip King	Absent
Kevin Frizzell	Yes
Doug Hammers	Absent
Kevin Howard	Yes
Ramona Williams	Absent
Gary Zheng	Yes

Motion Passed: Motion to return to open session passed with a motion by Josh Callihan and a second by Chris Melton

7 Yeas - 0 Nays

Josh Callihan	Yes
Ronald Herd	Yes
Chris Melton	Yes
Kevin Crump	Yes
(Proxy for Mike Withrow)	
Carl Shoupe	Absent
Phillip King	Absent
Kevin Frizzell	Yes
Doug Hammers	Absent
Kevin Howard	Yes
Ramona Williams	Absent
Gary Zheng	Yes



M. Actions Related to Closed Session

No action was needed.

N. Adjournment

Motion Passed: Motion to adjourn the KYMEA board meeting passed with a motion by Kevin Howard and a second by Chris Melton.

7 Yeas - 0 Nays

Josh Callihan	Yes
Ronald Herd	Yes
Chris Melton	Yes
Kevin Crump	Yes
(Proxy for Mike Withrow)	
Carl Shoupe	Absent
Phillip King	Absent
Kevin Frizzell	Yes
Doug Hammers	Absent
Kevin Howard	Yes
Ramona Williams	Absent
Gary Zheng	Yes

X

Chairperson

X

Secretary

Financial Reports





Financial Presentation

August 22, 2019

Statement of Net Position – July 2019

1. Checking account cash

2. Billing to AR &
Transmission service
members and ancillary
services



KENTUCKY MUNICIPAL ENERGY AGENCY

DRAFT

Statements of Net Position Jul-19

HRO

July
2019

ASSETS

CURRENT ASSETS

Cash and investments	\$	6,653,872
Other receivables		8,588,378
Prepayments		9,568
Total Current Assets		15,251,818

1

2

Statement of Net Position – July 2019

3. Collateral represents \$1M at MISO and \$1.3M at PJM

4. Fixed asset clearing negative balance represents billing to Paris in June, but waiting on AMP to invoice KYMEA for meters.

NON-CURRENT ASSETS

Restricted Assets

Pledged collateral	2,276,111
Interest receivable	2,360
Total Restricted Assets	2,278,471

3

Capital Assets

Fixed Asset Clearing Account	(18,758)
Office Buildout	253,638
Meters - AR Project	524,489
General Plant	667,104
Construction work in progress	-
Less Accumulated Depreciation	(95,122)
Net Capital Assets	1,331,351

4

Total Non-Current Assets	3,609,822
---------------------------------	------------------

Total Assets	18,861,640
---------------------	-------------------

Statement of Net Position – July 2019

5. AP represents purchase power

6. Deferred Lease Liability represents the difference in average monthly rent for term of office lease and actual lease payments

7. Total line of credit withdrawn

8. Positive net position

LIABILITIES

CURRENT LIABILITIES

Accounts Payable	\$	11,062,175	5
Accrued Employee Benefits		94,458	
Accrued interest payable		33,484	
Total Current Liabilities		11,190,117	

NON-CURRENT LIABILITIES

Deferred Lease Liability		33,102	6
Line of Credit		4,032,768	7
Total Non-Current Liabilities		4,065,870	
Total Liabilities		15,255,987	

Net Position

Invested in capital assets, net of related debt		(2,682,659)	
Restricted		-	
Unrestricted		6,288,312	
TOTAL NET POSITION		3,605,653	8

Revenue, Expenses, and Changes in Net Position – July 2019

CONSOLIDATED STATEMENTS OF REVENUE, EXPENSES, AND CHANGES IN NET POSITION

	July 2019	FY 2020	
OPERATING REVENUES			
Sales to members	\$ 7,880,239	\$ 7,880,239	9
Other revenues	98,158	98,158	10
TOTAL OPERATING REVENUE	7,978,398	7,978,398	
OPERATING EXPENSES			
Transmission	660,608	660,608	11
Fuel	-	-	
Production	5,789,826	5,789,826	12
Local facilities	-	-	
Other operating	96,860	96,860	
Maintenance	623	623	
Depreciation	13,865	13,865	
Future recoverable costs	-	-	
TOTAL PURCHASE POWER AND OPERATING EXPENSES	6,561,782	6,561,782	
OPERATING INCOME	1,416,616	1,416,616	
NON-OPERATING REVENUES (EXPENSES)			
Interest expense on debt	(14,354)	(14,354)	
Other non-operating expenses (income)	(3,905)	(3,905)	
Regulatory Credit/Debit - Cost to Be Recovered	-	-	
TOTAL NONOPERATING REVENUES (EXPENSES)	(15,483)	(15,483)	
CHANGE IN NET POSITION	1,401,134	1,401,134	13
NET POSITION AT BEGINNING OF PERIOD	\$ 2,204,519	2,204,519	
NET POSITION AT END OF PERIOD	\$ 3,605,653	3,605,653	

9. Sales to AR Members

10. Sales of transmission and ancillary services

11. Transmission from MISO, PJM, and KU net of depancaking credit

12. All purchase power including PPA, ITO, and SEPA

13. Positive net income

Indirect Cash Flow— July 2019

14. Net Income

15. Increases in AR & AP have offsetting effects on cash

16. Payment of \$5M on line of credit

17. Cash balance at end of fiscal year

CONSOLIDATED STATEMENT OF CASH FLOWS	CY Month Ended 7/31/2019	CY FY 2020	
CASH PROVIDED BY (USED IN) OPERATING ACTIVITIES			
NET INCOME	\$ 1,401,134	\$ 1,401,134	14
ADJUSTMENTS TO RECONCILE NET INCOME TO NET CASH:			
DEPRECIATION	\$ 13,865	\$ 13,865	
AMORTIZATION OF:			
ACQUISITION ADJUSTMENT		\$ -	
		\$ -	
CHANGES IN CURRENT & DEFERRED ITEMS:			
ACCOUNTS RECEIVABLE	\$ (613,266)	\$ (613,266)	15
MATERIALS & SUPPLIES		\$ -	
PREPAYMENTS & OTHER CURRENT ASSETS	\$ 1,196	\$ 1,196	
DEFERRED DEBITS		\$ -	
OTHER REG ASSETS AND DEFERRED OUTFLOW OF RESOURCES		\$ -	
ACCOUNTS PAYABLE	\$ 3,059,974	\$ 3,059,974	
COLLATERAL DEPOSITS		\$ -	
TAXES & INTEREST ACCRUED	\$ 15,322	\$ 15,322	
OTHER CURRENT LIABILITIES	\$ 1,565	\$ 1,565	
DEFERRED CREDITS	\$ 647	\$ 647	
OTHER		\$ -	
NET CASH PROVIDED BY (USED IN) OPERATION	\$ 3,880,436	\$ 3,880,436	
CASH PROVIDED BY (USED IN) INVESTING ACTIVITIES			
ADDITIONS TO PLANT	\$ 18,242	\$ 18,242	
NET CHANGE IN OTHER PROP & INVEST		\$ -	
PLANT SOLD (PURCHASED) - NONINSTALLMENT METHOD	\$ -	\$ -	
OTHER - ASSET RETIREMENT OBLIGATIONS	\$ -	\$ -	
NET CASH PROVIDED BY (USED IN) INVESTING	\$ 18,242	\$ 18,242	
CASH PROVIDED BY (USED IN) FINANCING ACTIVITIES			
LONG TERM BORROWINGS	\$ (5,000,000)	\$ (5,000,000)	16
PAYMENT ON LONG TERM DEBT	\$ -	\$ -	
OTHER	\$ -	\$ -	
NET CASH PROVIDED BY (USED IN) FINANCING	\$ (5,000,000)	\$ (5,000,000)	
NET INCREASE (DECREASE) IN CASH & TEMP INVESTMENTS	\$ (1,101,322)	\$ (1,101,322)	
CASH & TEMP INVESTMENTS BEGINNING PERIOD	\$ 7,755,194	\$ 7,755,194	
CASH & TEMP INVESTMENTS END OF PERIOD	\$ 6,653,872	\$ 6,653,872	17



KENTUCKY MUNICIPAL ENERGY AGENCY

DRAFT

**Statements of Net Position
Jul-19**

HRO

	July 2019
ASSETS	
CURRENT ASSETS	
Cash and investments	\$ 6,653,872
Other receivables	8,588,378
Prepayments	9,568
Total Current Assets	15,251,818
NON-CURRENT ASSETS	
Restricted Assets	
Pledged collateral	2,276,111
Interest receivable	2,360
Total Restricted Assets	2,278,471
Capital Assets	
Fixed Asset Clearing Account	(18,758)
Office Buildout	253,638
Meters - AR Project	524,489
General Plant	667,104
Construction work in progress	-
Less Accumulated Depreciation	(95,122)
Net Capital Assets	1,331,351
Total Non-Current Assets	3,609,822
Total Assets	18,861,640



KENTUCKY MUNICIPAL ENERGY AGENCY

DRAFT

**Statements of Net Position
Jul-19**

HRO

July
2019

LIABILITIES

CURRENT LIABILITIES

Accounts Payable	\$	11,062,175
Accrued Employee Benefits		94,458
Accrued interest payable		33,484
Total Current Liabilities		11,190,117

NON-CURRENT LIABILITIES

Deferred Lease Liability		33,102
Line of Credit		4,032,768
Total Non-Current Liabilities		4,065,870

Total Liabilities 15,255,987

Net Position

Invested in capital assets, net of related debt	(2,682,659)
Restricted	-
Unrestricted	6,288,312
TOTAL NET POSITION	3,605,653



KENTUCKY MUNICIPAL ENERGY AGENCY

DRAFT

HRO

**CONSOLIDATED STATEMENTS OF REVENUE, EXPENSES, AND
CHANGES IN NET POSITION**

	July 2019	YTD FY20
OPERATING REVENUES		
Sales to members	\$ 7,880,239	\$ 7,880,239
Other revenues	98,158	98,158
TOTAL OPERATING REVENUE	7,978,398	7,978,398
OPERATING EXPENSES		
Transmission	660,608	660,608
Fuel	-	-
Production	5,789,826	5,789,826
Local facilities	-	-
Other operating	96,860	96,860
Maintenance	623	623
Depreciation	13,865	13,865
Future recoverable costs	-	-
TOTAL PURCHASE POWER AND OPERATING EXPENSES	6,561,782	6,561,782
OPERATING INCOME	1,416,616	1,416,616
NON-OPERATING REVENUES (EXPENSES)		
Interest expense on debt	(14,354)	(14,354)
Other non-operating expenses (income)	(3,905)	(3,905)
Regulatory Credit/Debit - Cost to Be Recovered	-	-
TOTAL NONOPERATING REVENUES (EXPENSES)	(15,483)	(15,483)
CHANGE IN NET POSITION	1,401,134	1,401,134
NET POSITION AT BEGINNING OF PERIOD	\$ 2,204,519	2,204,519
NET POSITION AT END OF PERIOD	\$ 3,605,653	3,605,653



KENTUCKY MUNICIPAL ENERGY AGENCY

DRAFT

HRO

8/14/2019

CONSOLIDATED STATEMENT OF CASH FLOWS

	CY Month Ended 7/31/2019	CY YTD FY 2020
CASH PROVIDED BY (USED IN) OPERATING ACTIVITIES		
NET INCOME	\$ 1,401,134	\$ 1,401,134
ADJUSTMENTS TO RECONCILE NET INCOME TO NET CASH:		
DEPRECIATION	\$ 13,865	\$ 13,865
AMORTIZATION OF:		
ACQUISITION ADJUSTMENT		\$ -
		\$ -
CHANGES IN CURRENT & DEFERRED ITEMS:		
ACCOUNTS RECEIVABLE	\$ (613,266)	\$ (613,266)
MATERIALS & SUPPLIES		\$ -
PREPAYMENTS & OTHER CURRENT ASSETS	\$ 1,196	\$ 1,196
DEFERRED DEBITS		\$ -
OTHER REG ASSETS AND DEFERRED OUTFLOW OF RESOURCES		\$ -
ACCOUNTS PAYABLE	\$ 3,059,974	\$ 3,059,974
COLLATERAL DEPOSITS		\$ -
TAXES & INTEREST ACCRUED	\$ 15,322	\$ 15,322
OTHER CURRENT LIABILITIES	\$ 1,565	\$ 1,565
DEFERRED CREDITS	\$ 647	\$ 647
OTHER		\$ -
NET CASH PROVIDED BY (USED IN) OPERATION	\$ 3,880,436	\$ 3,880,436
CASH PROVIDED BY (USED IN) INVESTING ACTIVITIES		
ADDITIONS TO PLANT	\$ 18,242	\$ 18,242
NET CHANGE IN OTHER PROP & INVEST		\$ -
PLANT SOLD (PURCHASED) - NONINSTALLMENT METHOD	\$ -	\$ -
OTHER - ASSET RETIREMENT OBLIGATIONS	\$ -	\$ -
NET CASH PROVIDED BY (USED IN) INVESTING	\$ 18,242	\$ 18,242
CASH PROVIDED BY (USED IN) FINANCING ACTIVITIES		
LONG TERM BORROWINGS	\$ (5,000,000)	\$ (5,000,000)
PAYMENT ON LONG TERM DEBT	\$ -	\$ -
OTHER	\$ -	\$ -
NET CASH PROVIDED BY (USED IN) FINANCING	\$ (5,000,000)	\$ (5,000,000)
NET INCREASE (DECREASE) IN CASH & TEMP INVESTMENTS	\$ (1,101,322)	\$ (1,101,322)
CASH & TEMP INVESTMENTS BEGINNING PERIOD	\$ 7,755,194	\$ 7,755,194
CASH & TEMP INVESTMENTS END OF PERIOD	\$ 6,653,872	\$ 6,653,872

System: 8/14/2019 11:54:05 AM
User Date: 8/14/2019

KyMEA
RECONCILIATION POSTING JOURNAL
Bank Reconciliation

Page: 1
User ID: MHixon

Audit Trail Code: CMADJ00000030
Checkbook ID: OPER
Description: Operating Checking

Bank Statement Ending Balance: 6,656,550.55
Bank Statement Ending Date: 7/31/2019
Cutoff Date: 8/4/2019

Statement Ending Balance	6,656,550.55
Outstanding Checks (-)	80,055.04
Deposits in Transit (+)	-629.39

Adjusted Bank Balance	6,575,866.12

Checkbook Balance as of Cutoff	6,575,866.12
Adjustments	0.00

Adjusted Book Balance	6,575,866.12

Difference	0.00
	=====



Committee Reports

M. Committee Reports

M.1 AR Committee Workshop Report



Administration Reports





President & CEO Update

Doug Buresh

August 22, 2019

KYMEA Website Enhancements

Website Project Update

- Phase I: Provide easier access to Board meeting calendar, agenda, packet, and meeting minutes. – Expected completion date is October.
- Phase II: Investigate moving Board portal to secure spot on website.

Look and Feel of Board Meeting Calendar and Agendas

Board Meeting Calendar and Agendas

2019 MEETING CALENDAR

Prior meetings

Meeting date	Agenda	Packet	Minutes
July 24, 2019		View packet	
June 27, 2019	View agenda	View packet	
May 23, 2019	View agenda	View packet	View minutes
April 24, 2019	View agenda		View minutes
March 28, 2019			View minutes
February 28, 2019			View minutes
January 24, 2019			View minutes
December 19, 2018			View minutes

PME Member Access

Individual Members can access their data

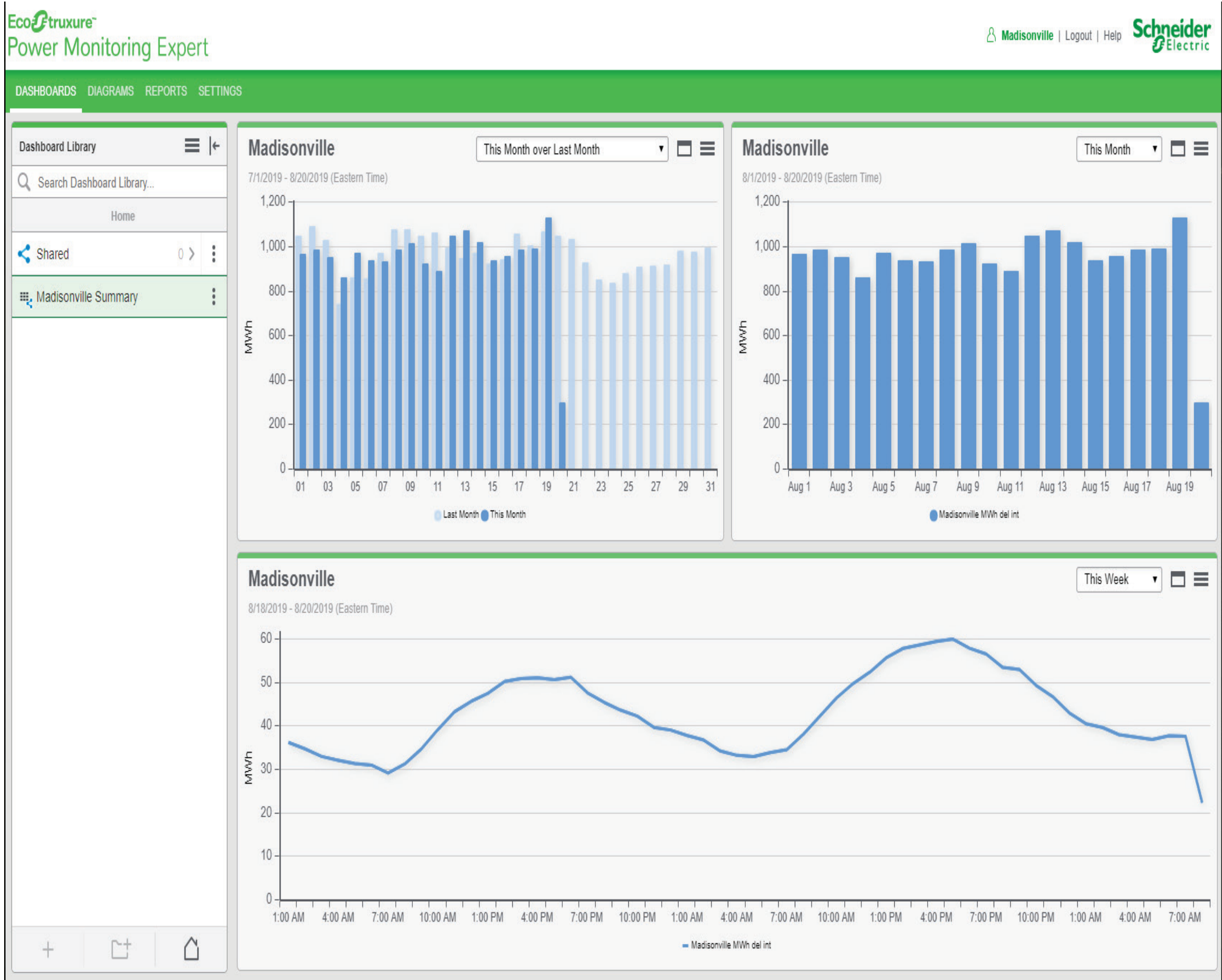
- **Provide IP address to Rob and he will get you access.**

<https://www.whatsmyip.org>

- 1. It should say at the top of the page what the IP address is.**
- 2. Send Rob the IP address and he will have it added as an authorized IP address.**

PME Member Access (continued)

Loads (Month-to-Month Comparison, Hourly Usage)

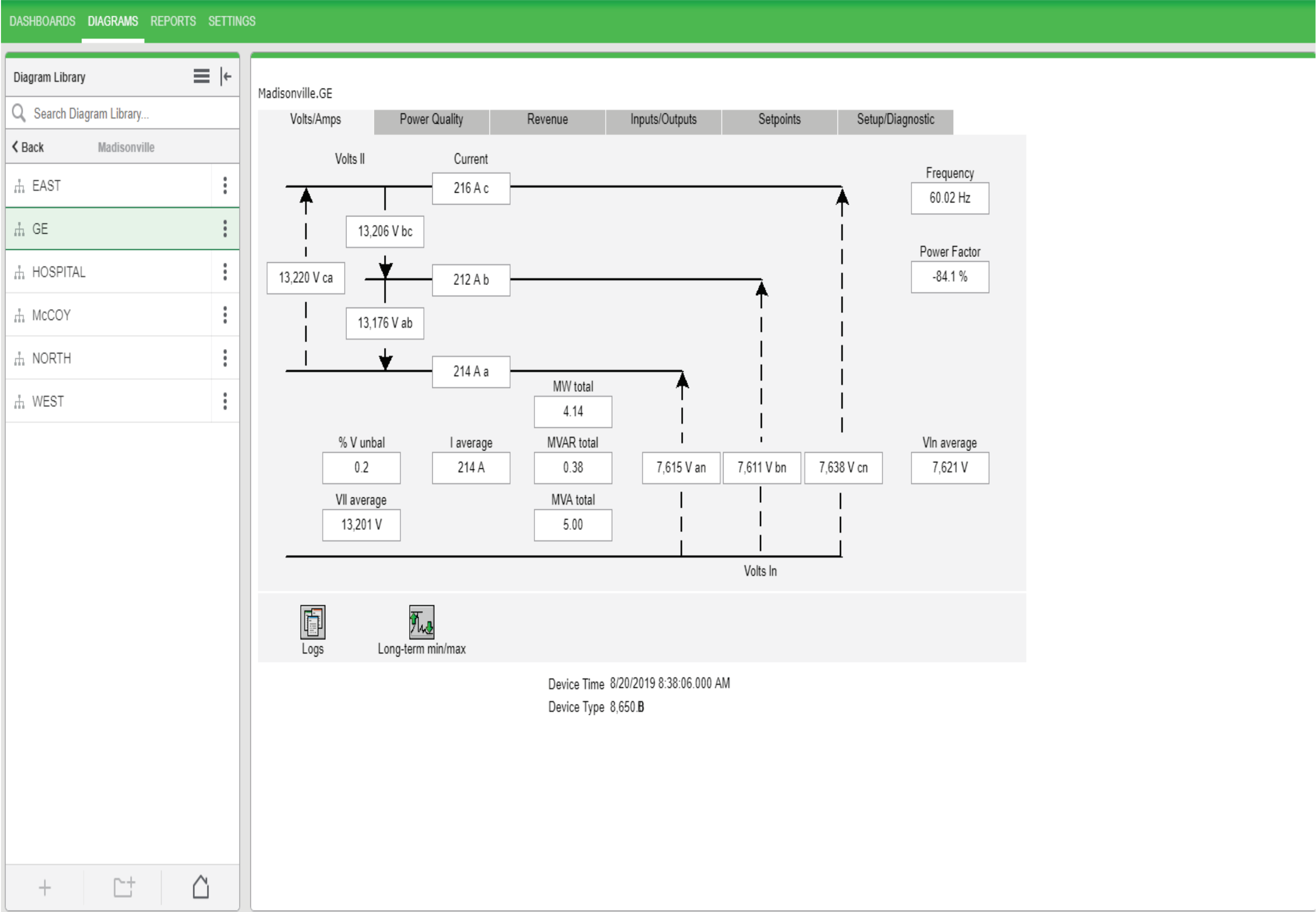


PME Member Access (continued)

3-Phase Voltage, Current, MW, MVAR, Power Factor

EcoStruxure™
Power Monitoring Expert

Madisonville | Logout | Help 



SERC Winter Assessment

SERC Winter Assessment

- KYMEA is taking care of all AR Project and Transmission member SERC Winter Assessment filing requirements.



SERC 2019-2020 Winter Assessment Narrative Write-up Questions

This template is intended to be an aid in gathering the elements required for the 2019-2020 Winter Assessment. Submit your response using the SERC Reliability Portal interface.

The submittal due date is August 26, 2019.

Please be as descriptive as possible in your response. If a question is not applicable to your Area, enter N/A in the space provided.

The questions below are provided as a guideline for completion of the seasonal assessment. When addressing each question, please adhere to the following guidelines:

- The entire season should be considered in development of the questions—not just the expected or actual conditions during the seasonal peak.
- Use plain text in the response. The portal form will not accept special formatting.

Seasonal Outlook

- 1) Describe any emerging or potential reliability issues for the upcoming winter season for your Area. These issues may pose short-term challenges that require additional attention for the upcoming winter season. Include details regarding the drivers, likelihood of impact, and a timeframe for each issue. Examples may include, but are not limited to, retired generation, capacity derates due to extreme cold weather and/or fuel unavailability, generation or transmission project delays, transmission constraints, etc.



CFO Report

Heather Overby

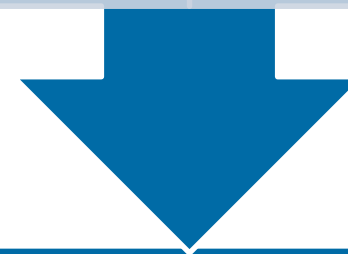
June 24, 2019

External Financial Audit

8/6/19-8/8/19 (field work completed)

No audit adjustments were found.

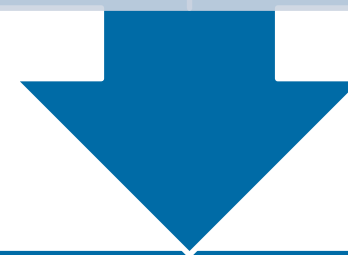
Internal control deficiencies related to staff size were noted.



Prior to 9/26/19

Chris Lindner will set up a conference call with the Executive Committee

Chris will discuss any audit findings with the executive committee.



9/26/19 Board Meeting

Chris Lindner will present final Audit report to the Board.

Final Audit report will be uploaded on the website and sent to Fitch.

Accounting System Migration to SEDC

- ◆ Southeastern Data Cooperative began migration in July.
- ◆ SEDC server installed end of July
- ◆ SEDC conversion personnel scheduled to be on site 8/26/19 – 8/30/19 for staff training.

SEDC's Report IQ Integrates Multiple Data Sources

Statistical Consumer Billing Data

This data is "raw" unadjusted aggregations based on billing history totals. The actual totals may be different based on the size and volume of adjustments. Additionally, metrics are based on Calendar Month totals.

SEDC Report IQ

Energy Charges Current Month

\$8,765,072

Average Bill Amount by Rate

Rate	Number of Accounts	Average Bill Amount
0001	57,822	\$93
0002	4,502	\$128
0003	887	\$104
0004	401	\$3,021
0005	164	\$653
0006	547	\$42
0007	9	\$30
0009	2	\$117,906
0010	1	\$209,809
0014	1	\$14,711
0015	9	\$45,180
0017	14	\$4,750
0020	16	\$80
0022	2	\$203
0030	3,186	\$124
0036	13	\$63
0066	871	\$36

Demand Charges Current Month

\$536,174

Active Billing Accounts:

68,508

Energy Charges Previous Month

\$10,449,044

Demand Charges Previous Month

\$550,306

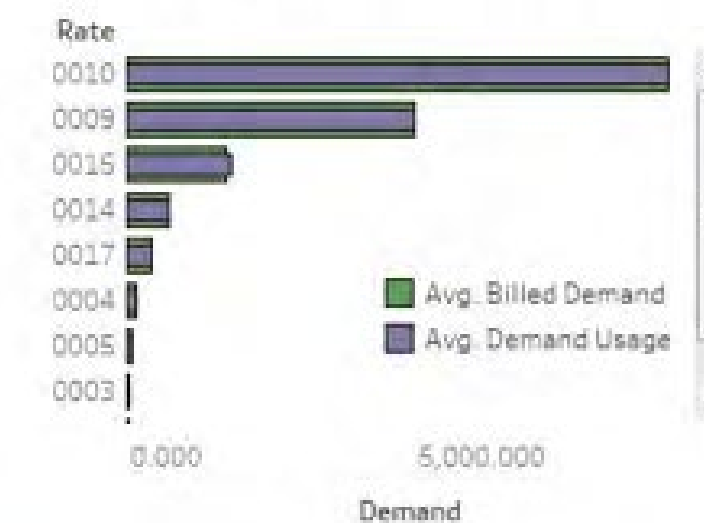
Accounts With Demand Charges:

1,116

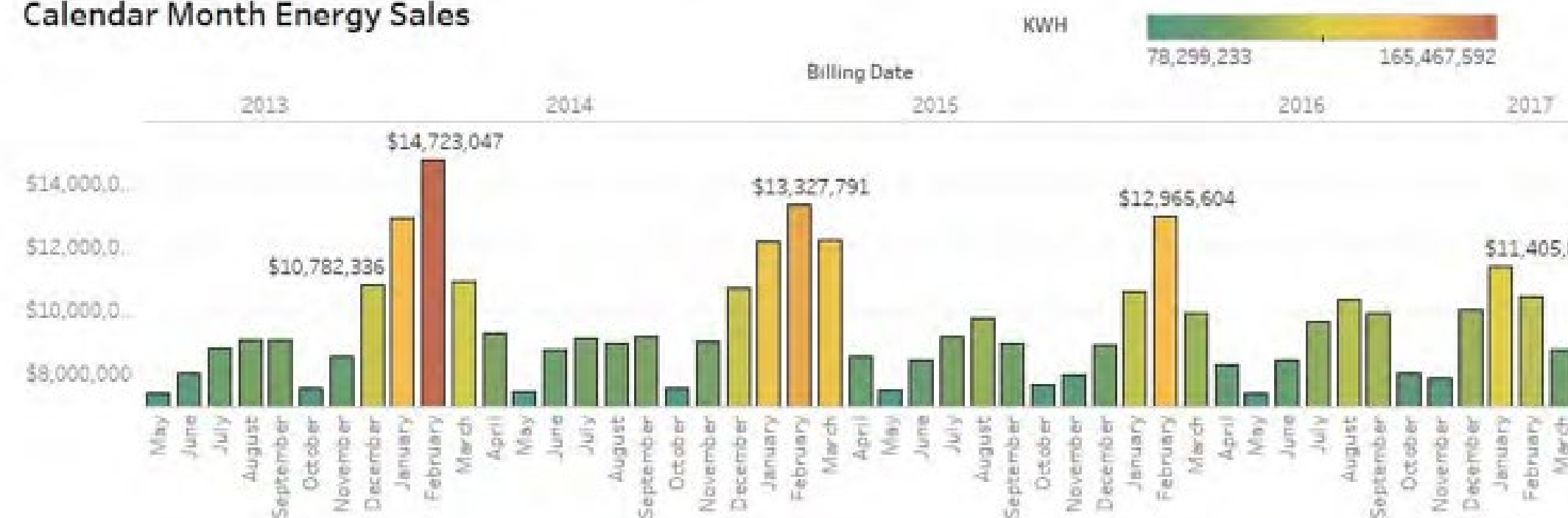
Current Month Actual vs Billed Demand

Rate	Avg. Demand Usage	Avg. Billed Demand	Demand Charges
0001	22.895	22.895	\$0
0002	13.854	13.854	\$821
0003	29.169	29.169	\$0
0004	134.871	134.871	\$351,347
0005	50.328	50.328	\$1,160
0009	3,871.777	3,871.777	\$47,700
0010	7,777.000	7,777.000	\$47,906
0015	1,116.000	1,116.000	\$0

This Year AVG Actual vs Billed Demand by Rate



Calendar Month Energy Sales



SEDC Sample EMC
100 Ashford Center North
Atlanta, GA 30338



SEDC's Retriever Imaging System Benefits

- ❖ Built-in templates eliminate the need to scan and input metadata
- ❖ Documents can be viewed as lists or thumbnails in UPN's Document Viewer
- ❖ Viewing, printing, scanning and other preferences are highly customizable
- ❖ Documents can be filtered based on your UPN security permissions
- ❖ Handwritten notes and other supporting documentation can be imaged and stored
- ❖ Comprehensive security settings allow you to set up roles and authorize access levels
- ❖ Pre-populated fields include account number, service order number and location number
- ❖ UPN integration means documents can be easily edited, distributed and shared between departments



Member Communications

August 22, 2019

3rd Quarter KYMEA Power Post

Look for your September copy in the mail.



- For Public power customers and employees = eligible for a rebate up to \$3,500
- Utilities, joint action agencies and state/regional associations = eligible for a rebate up to \$5,000. May use the rebate for fleet vehicles.



Make Your Next Car 100% Electric



with a Nissan LEAF rebate from your utility

Special Public Power Rebate Code: G81194

Your community-owned electric utility has partnered with the American Public Power Association and Nissan to offer great public power rebates on the 2019 Nissan LEAF. The rebates expire September 30, 2019.

Public power customers and employees are eligible for the rebate. Utilities, joint action agencies and state/regional associations may use the rebate for fleet vehicles.

2019 LEAF 40 kWh Standard
\$3,500 rebate off MSRP starting at \$29,990*

Rebate on utility fleet vehicles may be up to \$5,000 in ZEV states — ask your local dealer.

2019 LEAF 62 kWh ePlus
\$2,500 rebate off MSRP starting at \$36,550*

*MSRP excludes \$895 destination charge, tax, title, and license. Dealer sets actual price.

In addition to the public power rebate, you can get up to \$7,500 in federal EV tax credits. Additional state and local savings may also be available.

To claim the public power rebate

Bring printed or digital copies of this flyer, proof of eligible residency, and your current electric bill (or employee ID or a letter on letterhead if you work for a public power utility) to your local dealer. Find your local dealer at NissanUSA.com/nissanddealers.

Download a digital version of this flyer at PublicPower.org/EVrebates

Electric vehicles help us build a better community

- On average, it costs about half as much to drive an electric vehicle, compared to a similar vehicle that runs on gasoline.
- You can charge your EV at home, at work, or on the road. Skip the gas station — simply plug in your EV when you get home and have it ready to use the next morning.
- All-electric vehicles produce zero direct emissions to improve air quality, enhance public health, and reduce environmental impact.

Learn more about the benefits of EVs at www.energy.gov/eere/electricvehicles/electric-vehicles

#COMMUNITYpowered
 #ElectricVehicles

@PublicPowerOrg
 @NissanLeaf



BROC Meeting

September 26th
at 8:30 AM

September Committee Meetings

January	July
February	August
March	September
15 th IRC Committee 20 th BROC Committee	20 th IRC Committee 26th BROC Committee
April	October
	23 rd Compensation Committee
May	November
	19 th Budget Committee 20 th Compensation Committee
June	December
13 th IRC Committee 27 th BROC Committee	11 th Budget Committee 11 th AR Committee 13 th IRC Committee 18 th BROC Committee

KYMEA COMMITTEE CALENDAR

2019

JANUARY

S	M	T	W	T	F	S
		1	2	3	4	5
6	7	8	9	10	11	12
13	14	15	16	17	18	19
20	21	22	23	24	25	26
27	28	29	30	31		

MAY

S	M	T	W	T	F	S
			1	2	3	4
5	6	7	8	9	10	11
12	13	14	15	16	17	18
19	20	21	22	23	24	25
26	27	28	29	30	31	

SEPTEMBER

S	M	T	W	T	F	S
1	2	3	4	5	6	7
8	9	10	11	12	13	14
15	16	17	18	19	20	21
22	23	24	25	26	27	28
29	30					

FEBRUARY

S	M	T	W	T	F	S
					1	2
3	4	5	6	7	8	9
10	11	12	13	14	15	16
17	18	19	20	21	22	23
24	25	26	27	28		

JUNE

S	M	T	W	T	F	S
						1
2	3	4	5	6	7	8
9	10	11	12	13	14	15
16	17	18	19	20	21	22
23	24	25	26	27	28	29
30						

OCTOBER

S	M	T	W	T	F	S
		1	2	3	4	5
6	7	8	9	10	11	12
13	14	15	16	17	18	19
20	21	22	23	24	25	26
27	28	29	30	31		

MARCH

S	M	T	W	T	F	S
					1	2
3	4	5	6	7	8	9
10	11	12	13	14	15	16
17	18	19	20	21	22	23
24	25	26	27	28	29	30
31						

JULY

S	M	T	W	T	F	S
	1	2	3	4	5	6
7	8	9	10	11	12	13
14	15	16	17	18	19	20
21	22	23	24	25	26	27
28	29	30	31			

NOVEMBER

S	M	T	W	T	F	S
					1	2
3	4	5	6	7	8	9
10	11	12	13	14	15	16
17	18	19	20	21	22	23
24	25	26	27	28	29	30

APRIL

S	M	T	W	T	F	S
	1	2	3	4	5	6
7	8	9	10	11	12	13
14	15	16	17	18	19	20
21	22	23	24	25	26	27
28	29	30				

AUGUST

S	M	T	W	T	F	S
				1	2	3
4	5	6	7	8	9	10
11	12	13	14	15	16	17
18	19	20	21	22	23	24
25	26	27	28	29	30	31

DECEMBER

S	M	T	W	T	F	S
1	2	3	4	5	6	7
8	9	10	11	12	13	14
15	16	17	18	19	20	21
22	23	24	25	26	27	28
29	30	31				



Annual Report Community Spotlight

KYMEA: THE POWER OF UNBREAKABLE SPIRIT

COMMUNITY SPOTLIGHT

COUNTRY CUPBOARD RESTAURANT

MADISONVILLE, KY - Travel along Interstate 69 into the Western Coal Fields region, and you'll come across a small town called Madisonville, Kentucky. Founded in 1807 and named for Secretary of State James Madison, it later became a rail hub, coal mining center, and a major player in the tobacco industry.

Nicknamed "The Best Town on Earth", Madisonville prides itself on a sense of community and living by The Golden Rule. This phrase is passed on from generation to generation as a means of providing morality. Since most of the recipients have a sense of empathy, the message is generally well received. Morality is our set of guidelines on how to live, and what is right and wrong. This is where the folks of Madisonville truly shine.

Enter the Ice Storm of 2009. Considered the worst natural disaster in the state's history, the ice storm left almost half a million homes and businesses in the state without power. It left over 20 dead from carbon monoxide poisoning and hypothermia. Every National Guardsman in the state had been called in - 4,600 strong. In addition, over 5,000 utility workers made their way to the area, clearing debris and wielding chainsaws in an effort to restore power and promote mutual aid.

10 YEAR ANNIVERSARY NORTH AMERICAN ICE STORM OF 2009

- ◆ 3 INCHES OF ICE
- ◆ \$125 MILLION IN DAMAGE
- ◆ 1.3 MILLION WITHOUT POWER



Country Cupboard Manager, Etta Back, remembers it well. "I've worked here for thirty years. Nothing stops us", says Back. "That storm shut down the whole town, but not our spirit. We wanted to take care of those who had come to take care of us."

As the crippling ice storm laid its wintery wrath across Madisonville, the staff at Country Cupboard woke to notes taped to their front doors - "Meet at the restaurant" was all that was needed to get the message across. Ruby Ware, a waitress for 28 years, remembers it well. "We cooked breakfast, lunch and dinner for those boys - anybody that needed to eat, they were welcome."

Chef Deborah Lonely cooked meal after meal by candlelight at the gas stoves in the quiet of the night, while Phyllis Browning ran the show. Her son, Matt Browning, has worked at Country Cupboard since he was ten years old. Now owner of Country Cupboard and an Engineer at the Madisonville Fire Department, Matt recalls the unstoppable spirit that his mother displayed during the storm. "Mom is the backbone of the restaurant. She's the hardest working woman I know."

Food brings people together on many levels. It acts as nourishment of the soul and body, and breeds empathy. Feeding those who were in need during the ice storm came naturally to the Country Cupboard family, and how lucky for those who were there to be a part of it.



Discussion Topics and Miscellaneous Materials

F. Discussion Topics

- F.1 PURPA
- F.2 Legislative Update
- F.3 KYMEA Distribution Services
- F.4 Planning Process





KYMEA Distribution Services

Doug Buresh

August 22, 2019

P&D Engineering Support

KYMEA has a Master Service Agreement (MDA) with Patterson and Dewar Engineers (P&D).

- **Past Work: P&D installed the substation PTs, CTs, meters, and communication equipment for each KYMEA transmission member.**
- **Future Work: P&D will perform the meter testing and routine maintenance of KYMEA owned substation equipment.**
- **Through this relationship, there is an opportunity, at each member's discretion, for P&D to perform member specific distribution services through the KYMEA MSA.**

P&D Qualifications



Firm Qualifications
Power Delivery Engineering Solutions

Services and Solutions

Power Delivery

P&D began in 1947 by providing civil and electrical engineering and land surveying services for rural electrification programs extending service to towns and farms in the Southeast. Today, we specialize in designing and evaluating vital power delivery infrastructures for electrical cooperatives, municipalities, and investor-owned utilities.

Analysis and Planning

Our engineering team specializes in power delivery systems and are distinctly qualified to deliver comprehensive plans, studies, and consulting services that support short and long-term client objectives, including:

- Long-range system studies and plans
- Construction work plans
- Power supply studies (one-ownership studies)
- Distributed generation impact studies
- Load forecasts
- Environmental reports
- Sectionalizing studies
- Financial forecasts
- Arc hazard assessments
- Voltage drop analysis (load flow analysis)
- Motor start analysis
- Transient and harmonic analysis

Substations

We offer turnkey solutions and engineering services for substations ranging from 4kV to 500kV, including:

- Physical and structures design
- 3D modeling and design
- Drawings and specification development
- Contract preparation and bid evaluation
- Protective relaying and control design
- Protective device coordination and settings
- Substation automation
- Testing and commissioning of substation components, equipment, and systems
 - Factory and field witness testing criteria development
 - Functional and acceptance testing
 - Oil testing (Dielectric, PCB, etc.)
 - Procedures development, documentation, and training
- Electrical system troubleshooting

Distribution Systems

By blending current technology with time-tested best practices, we deliver high-quality distribution solutions to address the challenges faced by the evolving power delivery market, including:

- Distribution line design and staking
- Work order inspections
- Underground system design
- Specification development and procurement support
- Easement acquisition
- Underground pad and pole inspections
- Compliance verification (NESC, RUS, etc.)
- Joint-use "make-ready" assessment and remediation
- RUS contract preparation and close-out
- Field inventory with GPS location
- Storm restoration facilitation
- Training (NESC, line design, safety, etc.)

Transmission Systems

P&D provides transmission engineering services for lines ranging from 69kV to 345kV, including:

- Transmission line engineering
- NERC compliance assessment and remediation
- Line inspection (field teams and UAV/drone)
- Site acquisition assistance
- Siting and permitting
- Line construction standards development
- Asset inventory collection
- Specialized transmission line surveying
- Community and public relations
- Forensic analysis and expert witness testimony



Firm Qualifications
Power Delivery Engineering Solutions

Civil Engineering

Site Development & Land Planning

- Site design
- Environmental permitting
- Feasibility studies
- Conceptual land planning
- Storm water management
- Grading, earthwork, storm drainage
- NPDES erosion and sediment control
- Flood studies
- Site investigation
- Re-zoning & variance requests

Structural Engineering

- Utility structure design and analysis
- Foundation design (caissons, spread footers, pads)
- Soils investigation analysis
- Retaining wall design

Environmental Engineering

- Spill, Prevention, Control and Countermeasure (SPCC) design and retro-fit
- Erosion and sediment control
 - Storm Water Pollution Prevention Plans (SWPPP)
- Archaeological and biological site impact assessment

Land Surveying

We offer a full range of land surveys (boundary, topographic, ALTA/ACSM, etc.), as well laser scanning and 3D modeling. Our land surveying crews have worked together for more than a decade leveraging each other's experience, streamlining processes, and improving quality and efficiency. Our Professional Land Surveyors have an average of 30 years of experience and are licensed in several states throughout the country.

We Look Up, Too

Our survey crews specialize in linear route surveys of transmission and distribution lines. This valuable expertise allows us to correctly locate and identify additional detail that traditional surveyors may not, such as:

- Conductor sizes
- Voltage levels
- Pole and structure types
- Guy wires and anchors
- Pole-mounted equipment and appurtenances (street lights, transformers, etc.)
- Underbuilds and 3rd party attachments (cable, phone, fiber optic, etc.)
- Mid-span and lowest overhead clearances

This focused experience and knowledge distinguishes us from other surveyors and adds significant value to our electric utility clients.

Smart Grid, Communications, and Automation Solutions

Our experienced staff evaluates your current environment against your desired outcomes, offers objective advice on technology solutions, and helps implement solutions that address the needs of your entire organization, such as:

- Substation integration and automation
- Legacy RTU system modernization and replacement
- Advanced communications challenges and architectures
- Upgrading serial communications with a wide range of TCP/IP/ethernet technologies
- Designing/upgrading revenue metering systems
- Advanced SEL RTAC programming
- Relay/IED integration, installation, programming, and testing
- Supervisory Control and Data Acquisition (SCADA)
- Strategic planning
- Best practice assessments
- Operations Technology (OT) cyber security

P&D Qualifications (continued)



Firm Qualifications
Power Delivery Engineering Solutions

GIS Mapping and Services

With GIS (Geographic information systems), utilities can leverage extensive amounts of valuable data to quickly and accurately create reports, maps, and other visualization tools to provide clearer insight for analysis and planning, and to improve operational efficiency. Our GIS team provides:

- GIS mapping
 - › Comprehensive field equipment inventory
 - › System maintenance schedules and item conditions
 - › Aerial, topographic, and street map layers
 - › Underground infrastructure locations
 - › Service outages and response plans
 - › 3rd party attachments
 - › Custom mapping
- GIS data services
 - › Data collection and scrubbing
 - › Spatially referenced data conversion
 - › Data maintenance and repair
- GIS system services
 - › System analysis
 - › Implementation and integration support
 - › Workflow and procedures development

Renewable Energy Consulting

For wind and solar energy providers, and utilities with distributed generation from renewable energy sources, we offer:

- Conceptual design
- Peer review
- Microgrid consulting
- Interconnection consulting
- System impact studies
- Site selection and development
- Environmental permitting
- Site and equipment layout
- Testing and commissioning

Construction Management

We collaborate with peers and associates at every stage of the project providing services including:

- Design and construction firms' selection
- Construction document review
- Utility, permitting, and procurement coordination
- Value engineering analysis
- Equipment specification and procurement oversight
- Budget, schedule, and construction quality monitoring
- On-site construction supervision
- Equipment installation, testing and commissioning

Power Systems Studies

P&D conducts a thorough system analysis and provides a comprehensive report with practical recommendations.

- Cable ampacity studies
- Short circuit and coordination studies
- Arc flash hazard analysis
- Load flow study
- Motor starting study
- Harmonic analysis
- Power factor correction study
- Voltage drop study
- Transient analysis

Grounding Systems Design and Testing

P&D offers comprehensive grounding system design and testing services including:

- Building and substation grounding system design
- Modeling and evaluation of grounding system design
- Modeling of two-layer soil resistivity
- Site-specific recommendations
- Lightning protection system design & coordination
- Smart Ground® Multimeter (SGM) testing



Firm Qualifications
Power Delivery Engineering Solutions

Additional Services

Facility Support and Safety Services

P&D offers a variety of tailored Occupational Health Safety Management System (OHSMS) assessment, development and training services, including:

- Facility assessments
- Health and safety assessments
- Electrical Safety Program (ESP) development, assessment, and training
- Accident investigation
- Safety program development
- Procedures development
- On-site and classroom instructor-led training
 - › Customized facility operations training
 - › Arc flash hazard awareness classes
 - › Employee safety training
 - › OSHA-required training

Critical Facility Testing & Commissioning Services

With in-depth expertise in the delivery, use and control of energized facility systems, our engineers and technicians test and troubleshoot components and systems for utilities and other critical facilities. Our collective experience and dedicated focus on critical power delivery infrastructures uniquely qualifies us to understand the design, function and operation of each component and system deployed.

- Electrical system, device, and component testing
- Electrical, mechanical and integrated building systems commissioning
 - › Onsite assessment of equipment installation
 - › Functional testing (energized) of individual components and systems
 - › Outage behavior and capacity verification
 - › Re-commissioning and retro-commissioning
 - › Live-site commissioning
 - › LEED Fundamental and Enhanced commissioning
- Infrared thermography
- QA/QC services
- Power quality & load analysis
- Troubleshooting and problem-solving
- Site assessments
- Energy audits

Additional Consulting Services

- Peer review
- Custom training programs for utilities (NESC, line design, etc.)
- Forensic evaluations
- Expert witness services

KYMEA - P&D Distribution Services (invoiced through KYMEA)

Specifics

- **Statement of Work (SOW):** Each member would approve the SOW, schedule, and fees to be charged by P&D Engineering.
- **Each member is responsible for all costs (materials, services, etc.)**
- **P&D will invoice KYMEA**
- **KYMEA will invoice each member with their monthly Power Bill.**

Firm Qualifications

Power Delivery Engineering Solutions

Presented to:



PUBLIC POWER FOR KENTUCKY

Rob Leesman, VP Market Operations
Kentucky Municipal Energy Agency
1700 Eastpoint Parkway, Suite 220
Louisville, KY 40223

rleesman@kymea.org

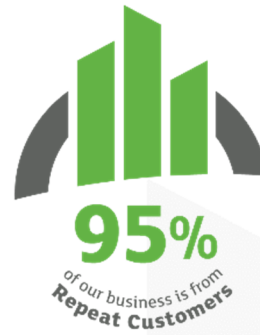


Georgia | Tennessee | Texas | Virginia

pdengineers.com | (770) 453-1410

Introduction to P&D

Patterson & Dewar Engineers, Inc. (P&D) provides engineering, land surveying, and construction management services to clients from our offices in Atlanta, Nashville, Dallas, and northern Virginia. We offer a wide range of services to clients across the country and around the world.



Rated one of the best places to work by our employees in the Atlanta Journal Constitution's Top Workplaces survey, many of our staff have dedicated their entire professional careers to serving clients at P&D. We are an employee-owned firm that delivers quality-assured engineering services, bankable expertise, and results-oriented solutions. But more than that, we are a cohesive and collaborative team of talented people united by a common charter.

*We approach each project with
an unyielding commitment to excellence and integrity;
these guiding principles make us a trusted ally
to the clients we proudly serve.*

P&D is a niche firm, adept at addressing the unique challenges our clients face while crafting enduring relationships and remaining responsive to their needs. We purposefully seek clients that are a cultural fit, then cultivate high-value partnerships by serving as an extension of their teams. We are especially honored by the long-term relationships we maintain with our clients, some of whom have depended on us for decades.

Office Locations

Georgia (Corporate HQ)

850 Center Way
Norcross, GA 30071
(770) 453-1410

Texas

15924 Midway Road
Addison, TX 75001
(214) 461-0760

Tennessee

1531 Hunt Club Boulevard
Suite 200
Gallatin, TN 37066
(615) 527-7084

Virginia

4511 Daly Drive
Suite I
Chantilly, VA 20151
(770) 453-1410

The P&D Advantage – Our Team

What truly distinguishes P&D from other firms is team of dedicated, experienced, knowledgeable professionals we have been fortunate enough to attract and retain. Our people are our most important asset. We are a niche firm composed of talented professionals, many of whom have spent their entire careers with serving rural utility clients in the TVA service area. Others who began their careers elsewhere now broaden our collective expertise, and our recent grads and interns provide enthusiasm and fresh perspectives that fuel innovation and teamwork.

Together, our employees offer a deep pool of technical experience to draw from, and our in-house and field training programs help us sustain our tradition of excellence and continue to serve our clients' evolving needs for generations to come. We foster a collaborative culture where managers and staff routinely work side-by-side in the office and in the field. This model allows us to share knowledge and experience blended with lessons learned and new ideas to strengthen the team and enrich the customer experience.



Firm Principals



Mike Kline, PE
CEO & President,
Patterson & Dewar
Engineers, Inc. (P&D)



Dan Parker, PE
President,
Hood Patterson
& Dewar (HP&D)



Aaron Wyso
CFO,
Patterson & Dewar
Engineers, Inc. (P&D)



Anita Atkinson, PE
Vice President,
Engineering &
Surveying (P&D)



Mark Wichelt
Vice President,
Construction
Management (P&D)



**Brandon
Sedgwick, PE**
Vice President,
Operations (HP&D)

Representative Project Team and Experience

Our staff has an in-depth understanding of the challenges faced by electric utilities because we specialize in power distribution. Collaborative, cross-functional teams focus their attention on clients who enjoy direct access to knowledgeable engineers and technical staff. Our team has extensive experience with transmission, substation and distribution engineering, site development, system planning and analysis, smart grid consulting, power studies, construction management, surveying, testing and commissioning, and more.

At P&D, we approach each project with the same objectives in mind: tailor a solution to the client's specific needs and exceed their expectations. We treat your project as if it were our own, providing hands-on management with a dedicated focus on quality control and continuous improvement.

Staff Composition

Total Staff	166
Professional Engineers (PE)	33
Graduate engineers (non-PE)	78
Technicians/analysts	17
Land surveyors and crew	13
CAD/GIS specialists	9
Support staff	16

Services and Solutions

Power Delivery

P&D began in 1947 by providing civil and electrical engineering and land surveying services for rural electrification programs extending service to towns and farms in the Southeast. Today, we specialize in designing and evaluating vital power delivery infrastructures for electrical cooperatives, municipalities, and investor-owned utilities.

Analysis and Planning

Our engineering team specializes in power delivery systems and are distinctly qualified to deliver comprehensive plans, studies, and consulting services that support short and long-term client objectives, including:

- Long-range system studies and plans
- Construction work plans
- Power supply studies (one-ownership studies)
- Distributed generation impact studies
- Load forecasts
- Environmental reports
- Sectionalizing studies
- Financial forecasts
- Arc hazard assessments
- Voltage drop analysis (load flow analysis)
- Motor start analysis
- Transient and harmonic analysis

Substations

We offer turnkey solutions and engineering services for substations ranging from 4kV to 500kV, including:

- Physical and structures design
- 3D modeling and design
- Drawings and specification development
- Contract preparation and bid evaluation
- Protective relaying and control design
- Protective device coordination and settings
- Substation automation
- Testing and commissioning of substation components, equipment, and systems
 - › Factory and field witness testing criteria development
 - › Functional and acceptance testing
 - › Oil testing (Dielectric, PCB, etc.)
 - › Procedures development, documentation, and training
- Electrical system troubleshooting

Distribution Systems

By blending current technology with time-tested best practices, we deliver high-quality distribution solutions to address the challenges faced by the evolving power delivery market, including:

- Distribution line design and staking
- Work order inspections
- Underground system design
- Specification development and procurement support
- Easement acquisition
- Underground pad and pole inspections
- Compliance verification (NESC, RUS, etc.)
- Joint-use “make-ready” assessment and remediation
- RUS contract preparation and close-out
- Field inventory with GPS location
- Storm restoration facilitation
- Training (NESC, line design, safety, etc.)

Transmission Systems

P&D provides transmission engineering services for lines ranging from 69kV to 345kV, including:

- Transmission line engineering
- NERC compliance assessment and remediation
- Line inspection (field teams and UAV/drone)
- Site acquisition assistance
- Siting and permitting
- Line construction standards development
- Asset inventory collection
- Specialized transmission line surveying
- Community and public relations
- Forensic analysis and expert witness testimony

Civil Engineering

Site Development & Land Planning

- Site design
- Environmental permitting
- Feasibility studies
- Conceptual land planning
- Storm water management
- Grading, earthwork, storm drainage
- NPDES erosion and sediment control
- Flood studies
- Site investigation
- Re-zoning & variance requests

Structural Engineering

- Utility structure design and analysis
- Foundation design (caissons, spread footers, pads)
- Soils investigation analysis
- Retaining wall design

Environmental Engineering

- Spill, Prevention, Control and Countermeasure (SPCC) design and retro-fit
- Erosion and sediment control
 - Storm Water Pollution Prevention Plans (SWPPP)
- Archaeological and biological site impact assessment

Land Surveying

We offer a full range of land surveys (boundary, topographic, ALTA/ACSM, etc.), as well laser scanning and 3D modeling. Our land surveying crews have worked together for more than a decade leveraging each other's experience, streamlining processes, and improving quality and efficiency. Our Professional Land Surveyors have an average of 30 years of experience and are licensed in several states throughout the country.

We Look Up, Too

Our survey crews specialize in linear route surveys of transmission and distribution lines. This valuable expertise allows us to correctly locate and identify additional detail that traditional surveyors may not, such as:

- Conductor sizes
- Voltage levels
- Pole and structure types
- Guy wires and anchors
- Pole-mounted equipment and appurtenances (street lights, transformers, etc.)
- Underbuilds and 3rd party attachments (cable, phone, fiber optic, etc.)
- Mid-span and lowest overhead clearances

This focused experience and knowledge distinguishes us from other surveyors and adds significant value to our electric utility clients.

Smart Grid, Communications, and Automation Solutions

Our experienced staff evaluates your current environment against your desired outcomes, offers objective advice on technology solutions, and helps implement solutions that address the needs of your entire organization, such as:

- Substation integration and automation
- Legacy RTU system modernization and replacement
- Advanced communications challenges and architectures
- Upgrading serial communications with a wide range of TCP/IP/ethernet technologies
- Designing/upgrading revenue metering systems
- Advanced SEL RTAC programming
- Relay/IED integration, installation, programming, and testing
- Supervisory Control and Data Acquisition (SCADA)
- Strategic planning
- Best practice assessments
- Operations Technology (OT) cyber security

GIS Mapping and Services

With GIS (Geographic information systems), utilities can leverage extensive amounts of valuable data to quickly and accurately create reports, maps, and other visualization tools to provide clearer insight for analysis and planning, and to improve operational efficiency. Our GIS team provides:

- GIS mapping
 - › Comprehensive field equipment inventory
 - › System maintenance schedules and item conditions
 - › Aerial, topographic, and street map layers
 - › Underground infrastructure locations
 - › Service outages and response plans
 - › 3rd party attachments
 - › Custom mapping
- GIS data services
 - › Data collection and scrubbing
 - › Spatially referenced data conversion
 - › Data maintenance and repair
- GIS system services
 - › System analysis
 - › Implementation and integration support
 - › Workflow and procedures development

Renewable Energy Consulting

For wind and solar energy providers, and utilities with distributed generation from renewable energy sources, we offer:

- Conceptual design
- Peer review
- Microgrid consulting
- Interconnection consulting
- System impact studies
- Site selection and development
- Environmental permitting
- Site and equipment layout
- Testing and commissioning

Construction Management

We collaborate with peers and associates at every stage of the project providing services including:

- Design and construction firms' selection
- Construction document review
- Utility, permitting, and procurement coordination
- Value engineering analysis
- Equipment specification and procurement oversight
- Budget, schedule, and construction quality monitoring
- On-site construction supervision
- Equipment installation, testing and commissioning

Power Systems Studies

P&D conducts a thorough system analysis and provides a comprehensive report with practical recommendations.

- Cable ampacity studies
- Short circuit and coordination studies
- Arc flash hazard analysis
- Load flow study
- Motor starting study
- Harmonic analysis
- Power factor correction study
- Voltage drop study
- Transient analysis

Grounding Systems Design and Testing

P&D offers comprehensive grounding system design and testing services including:

- Building and substation grounding system design
- Modeling and evaluation of grounding system design
- Modeling of two-layer soil resistivity
- Site-specific recommendations
- Lightning protection system design & coordination
- Smart Ground® Multimeter (SGM) testing

Additional Services

Facility Support and Safety Services

P&D offers a variety of tailored Occupational Health Safety Management System (OHSMS) assessment, development and training services, including:

- Facility assessments
- Health and safety assessments
- Electrical Safety Program (ESP) development, assessment, and training
- Accident investigation
- Safety program development
- Procedures development
- On-site and classroom instructor-led training
 - › Customized facility operations training
 - › Arc flash hazard awareness classes
 - › Employee safety training
 - › OSHA-required training

Critical Facility Testing & Commissioning Services

With in-depth expertise in the delivery, use and control of energized facility systems, our engineers and technicians test and troubleshoot components and systems for utilities and other critical facilities. Our collective experience and dedicated focus on critical power delivery infrastructures uniquely qualifies us to understand the design, function and operation of each component and system deployed.

- Electrical system, device, and component testing
- Electrical, mechanical and integrated building systems commissioning
 - › Onsite assessment of equipment installation
 - › Functional testing (energized) of individual components and systems
 - › Outage behavior and capacity verification
 - › Re-commissioning and retro-commissioning
 - › Live-site commissioning
 - › LEED Fundamental and Enhanced commissioning
- Infrared thermography
- QA/QC services
- Power quality & load analysis
- Troubleshooting and problem-solving
- Site assessments
- Energy audits

Additional Consulting Services

- Peer review
- Custom training programs for utilities (NESC, line design, etc.)
- Forensic evaluations
- Expert witness services

Representative Client List

Below is a representative list of cooperative and municipality utility clients we currently serve.

Alabama

Athens Utilities

- Substation design & commissioning

City of Dothan

- Distribution design
- GIS mapping
- Relay replacements

Clarke-Washington EMC (40-yr client)

- System studies
- Construction work plans
- Arc hazard assessments
- Distribution design & inspections
- Construction contracts

Covington EC (30-yr client)

- System studies
- Construction work plans
- Distribution design & inspections
- Construction contracts

Cullman EC (10-yr client)

- Substation design & commissioning
- Smart grid consulting

Joe Wheeler EMC

- Substation design & commissioning
- Site development
- Transmission modeling

Pioneer EC (40-yr client)

- System studies
- Construction work plans
- Arc hazard assessments
- Distribution design & inspections
- Substation design
- Construction contracts

Sand Mountain EC (40-yr client)

- Substation design & commissioning
- System studies
- Construction work plans
- Arc hazard assessments
- Distribution design & inspections
- Construction contracts

South Alabama EC (30-yr client)

- System studies
- Construction work plans
- Arc hazard assessments
- Distribution design & inspections

Southern Pine EC (40-yr client)

- System studies
- Construction work plans
- Arc hazard assessments
- Distribution design & inspections
- Smart grid consulting services
- Power factor/harmonics analysis & design

Tallapoosa River EC

- System studies
- Construction work plans
- Distribution design & inspections
- Construction contracts

Wiregrass EC (30-yr client)

- System studies
- Construction work plans
- Arc hazard assessments
- Distribution design & inspections
- GIS mapping
- Large power customer contracts

Florida

CHELCO

- Distribution design & inspections

Talquin EC (20-yr client)

- Arc hazard assessments
- Transmission design
- Substation design & commissioning
- Power factor/harmonics analysis

Town of Palm Beach

- Peer Review of Utilities UG Master Plan

West Florida EC (50-yr client)

- System studies
- Construction work plans
- Arc hazard assessments
- Work order inspections
- Smart grid consulting
- Construction contracts

Georgia

Greystone Power Corp. (30-yr client)

- System studies
- GIS mapping
- Distribution engineering
- Construction contracts

North Georgia EMC (65-yr client)

- Load forecasts
- Power supply studies
- Distribution design & inspections
- Substation design & commissioning
- Oil spill containment design
- Smart grid consulting

Tri-State EMC (40-yr client)

- System studies
- Construction work plans
- Distribution design & inspections
- Substation design & commissioning
- GIS mapping

Kentucky

Bardstown Utilities

- Substation design
- Relay settings & coordination
- SCADA design

Berea Municipal Utilities

- Substation design & commissioning
- Distribution conversion design

Big Rivers EC

- Power studies

Clark Energy

- Work order inspections
- Construction contracts

Cumberland Valley Electric

- System studies
- Construction work plans
- Arc hazard assessments
- Distribution design & inspections
- Construction contracts
- GIS mapping

East Kentucky Power Cooperative

- Substation evaluations
- Ground grid testing

Fleming-Mason EC

- Construction contracts

Hopkinsville Electric System

- Engineering
- Arc hazard assessments
- Substation design
- System studies

Madisonville Municipal Utilities

- Substation design & commissioning
- Distribution design

Paducah Power System

- Substation design & commissioning
- Arc hazard assessments
- Transmission modeling

Princeton EPB

- Engineering
- Relay settings & commissioning
- SCADA system design & implementation

South Kentucky RECC

- Work order inspections
- Construction contracts

Taylor County RECC

- System studies
- Construction work plans
- Construction contracts
- GIS mapping

West Kentucky RECC

- System studies
- Distribution design
- Substation design & commissioning

Mississippi**4-County EPA**

- System studies
- Distribution design
- Substation design
- Oil spill containment design
- Smart grid consulting
- Site development
- GIS mapping

Dixie EPA (50-yr client)

- System studies
- Construction work plans
- Distribution design
- Substation design & commissioning

Southern Pine EPA (65-yr client)

- System studies
- Construction work plans
- Distribution design
- Substation design & commissioning
- Oil spill containment design
- Smart grid consulting
- GIS mapping

Twin County EPA (30-yr client)

- System studies
- Construction work plans
- Distribution design
- Substation design & commissioning
- Oil spill containment design

Yazoo Valley EPA (30-yr client)

- System studies
- Construction work plans
- Distribution design
- Substation design & commissioning
- Oil spill containment design
- Large power customer contract and billing negotiations

Tennessee**Caney Fork EC**

- Engineering
- Smart grid consulting
- Substation design & commissioning

City of Oak Ridge Elec. Dept.

- Distribution design
- Substation design & commissioning
- SCADA system design
- Smart grid consulting

Cumberland EMC (65-yr client)

- System studies
- Construction work plans
- Work order inspections
- Substation design & commissioning
- Construction contracts

Erwin Utilities

- Substation design

Forked Deer EC (30-yr client)

- System studies
- Construction work plans
- Distribution design
- Transmission design
- Substation design & commissioning
- Oil spill containment design
- Smart grid consulting

Gibson EMC (40-yr client)

- System studies
- Construction work plans
- Distribution design
- Substation design & commissioning

Lafollette Utilities Board

- Substation design & commissioning
- Distribution design
- Transmission modeling

Lawrenceburg Utility System

- SCADA system design & implementation
- Smart grid consulting

Lenoir City Utilities Board

- System studies
- Substation design & commissioning
- Site development
- Smart grid consulting

Maryville Electric Dept. (10-yr client)

- Substation design & commissioning

Pickwick EC

- System studies
- Construction work plans
- Distribution design
- Substation design & commissioning
- GIS mapping

Plateau EC

- Substation design
- Distribution design
- Oil spill containment design

Sequachee Valley EC

- System studies
- Construction work plans

Tri-County EMC

- Substation design
- Transmission design

Texas**XCEL Energy**

- Storm water pollution prevention

Virginia**Northern Virginia EC**

- Transmission design

Rappahannock EC

- Transmission design

Shenandoah Valley EC

- Transmission design

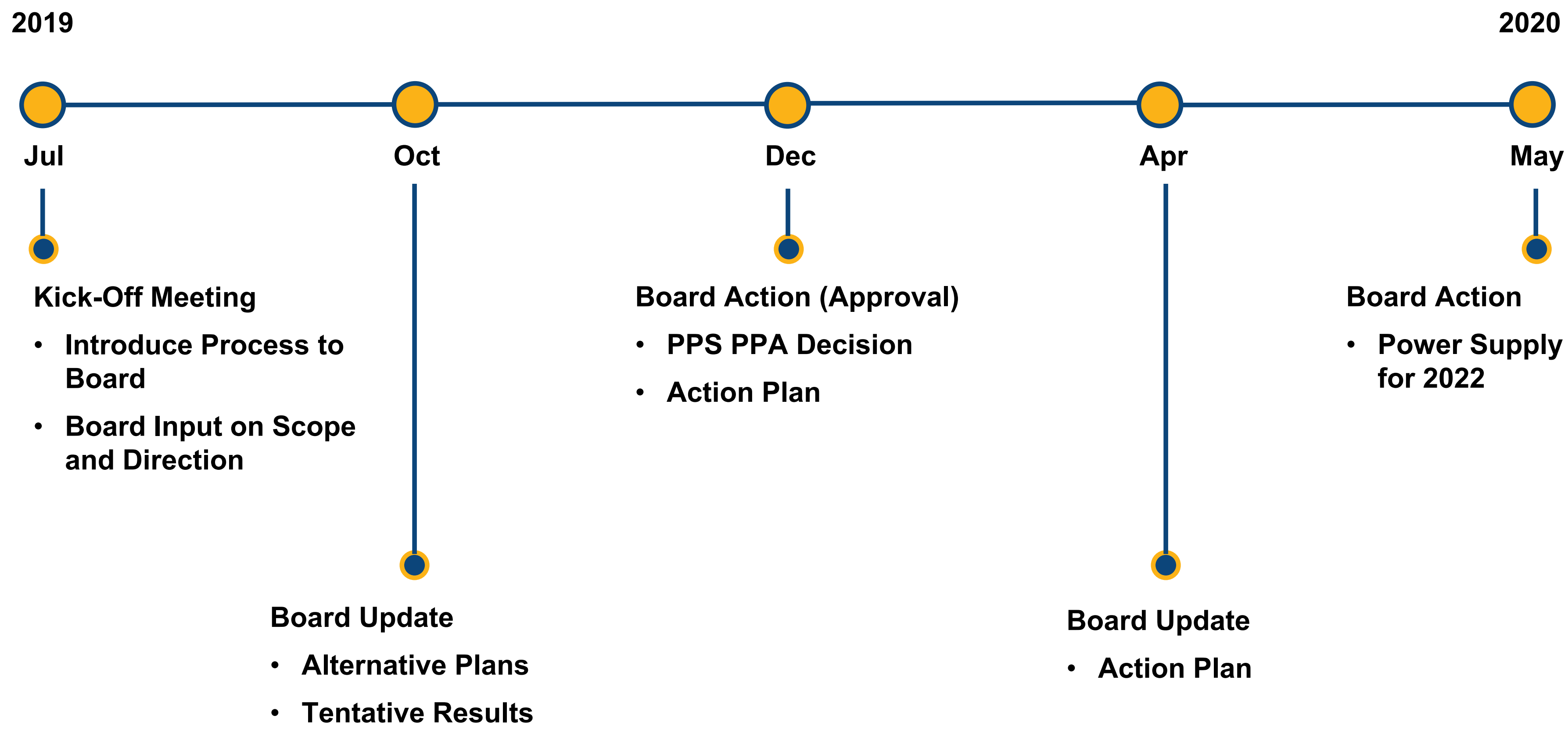


Integrated Resource Planning

Doug Buresh

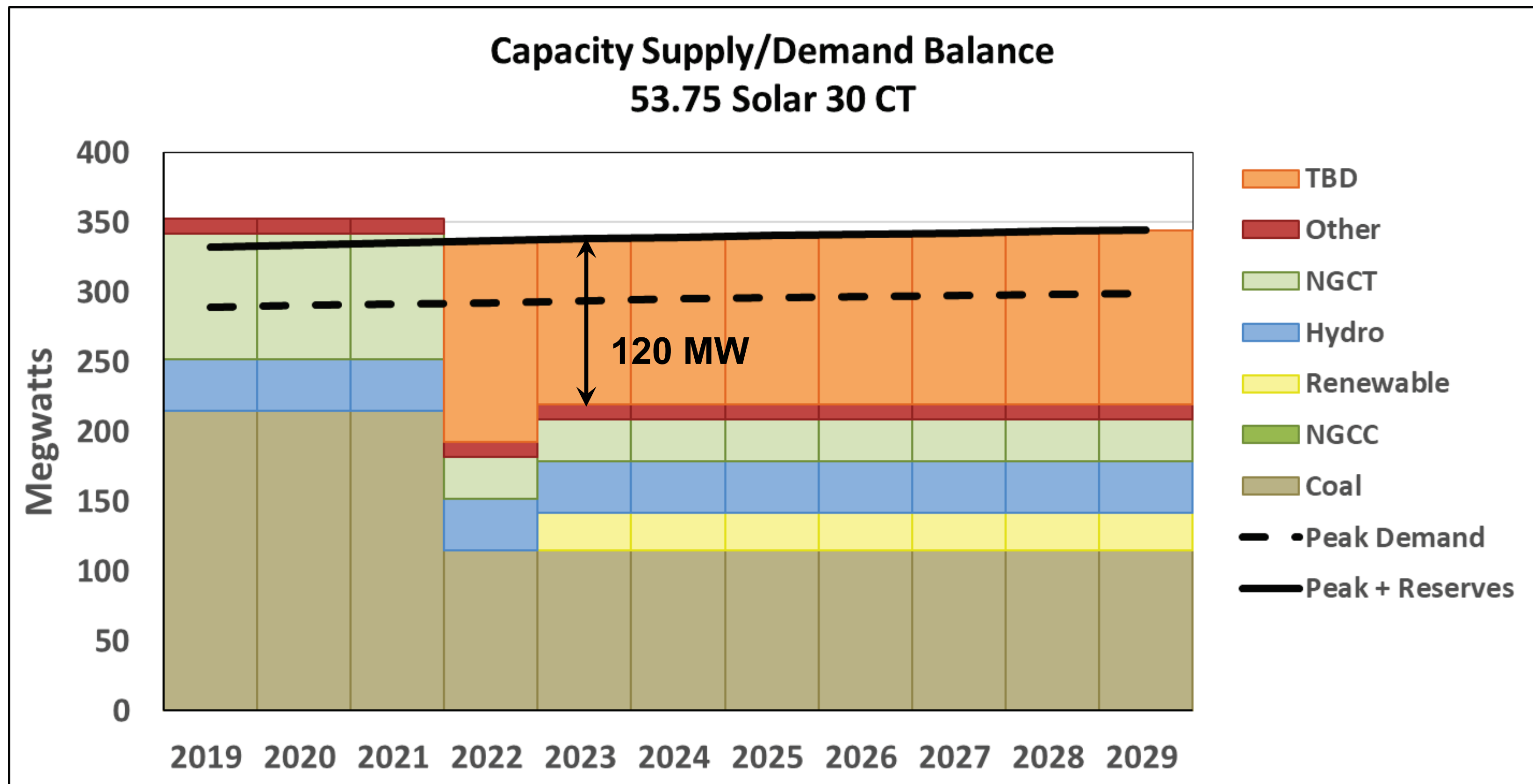
August 22, 2019

IRP Schedule



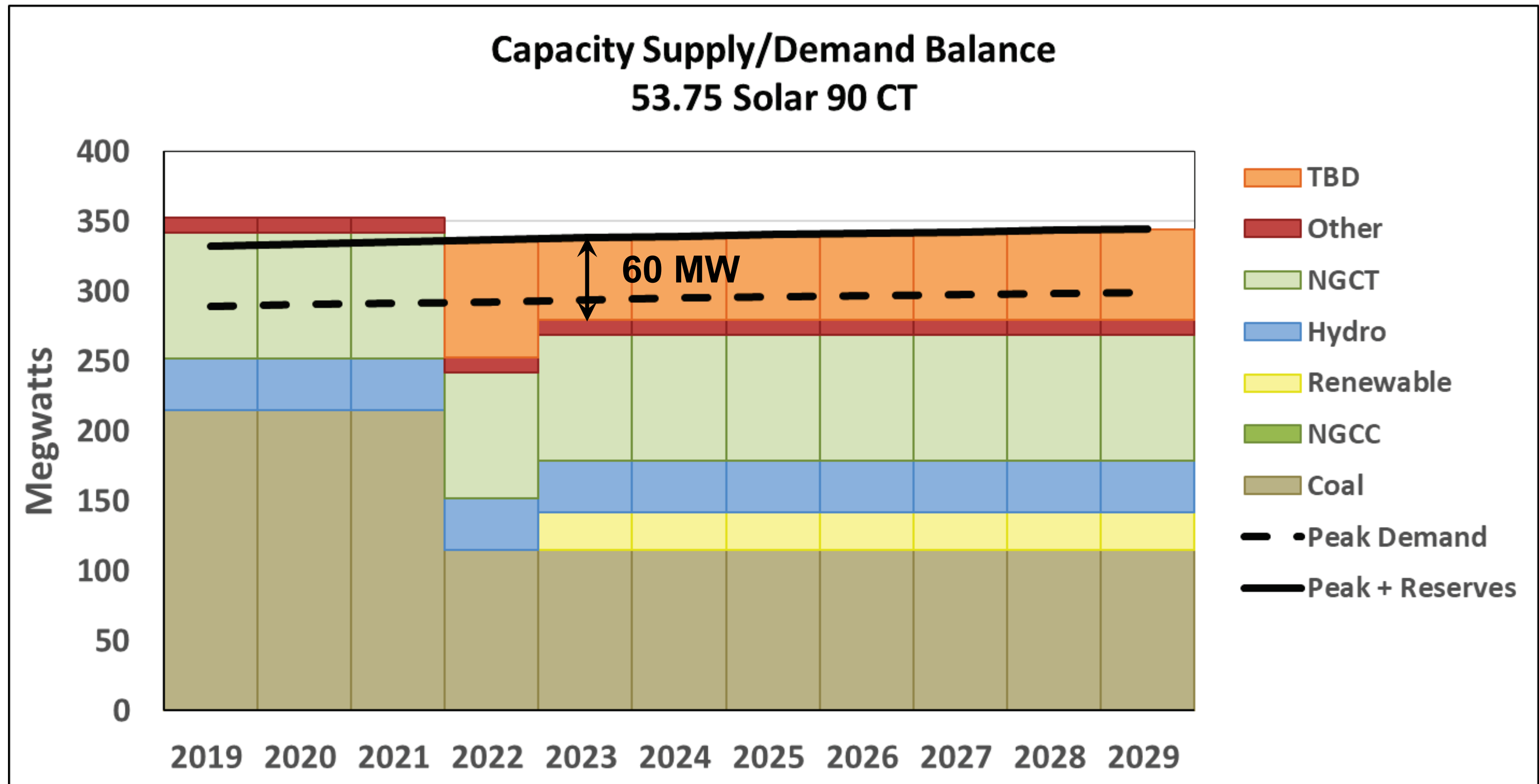
Capacity Supply/Demand Balance

Scenario 1 (Paducah reduced to 30 MW)



Capacity Supply/Demand Balance

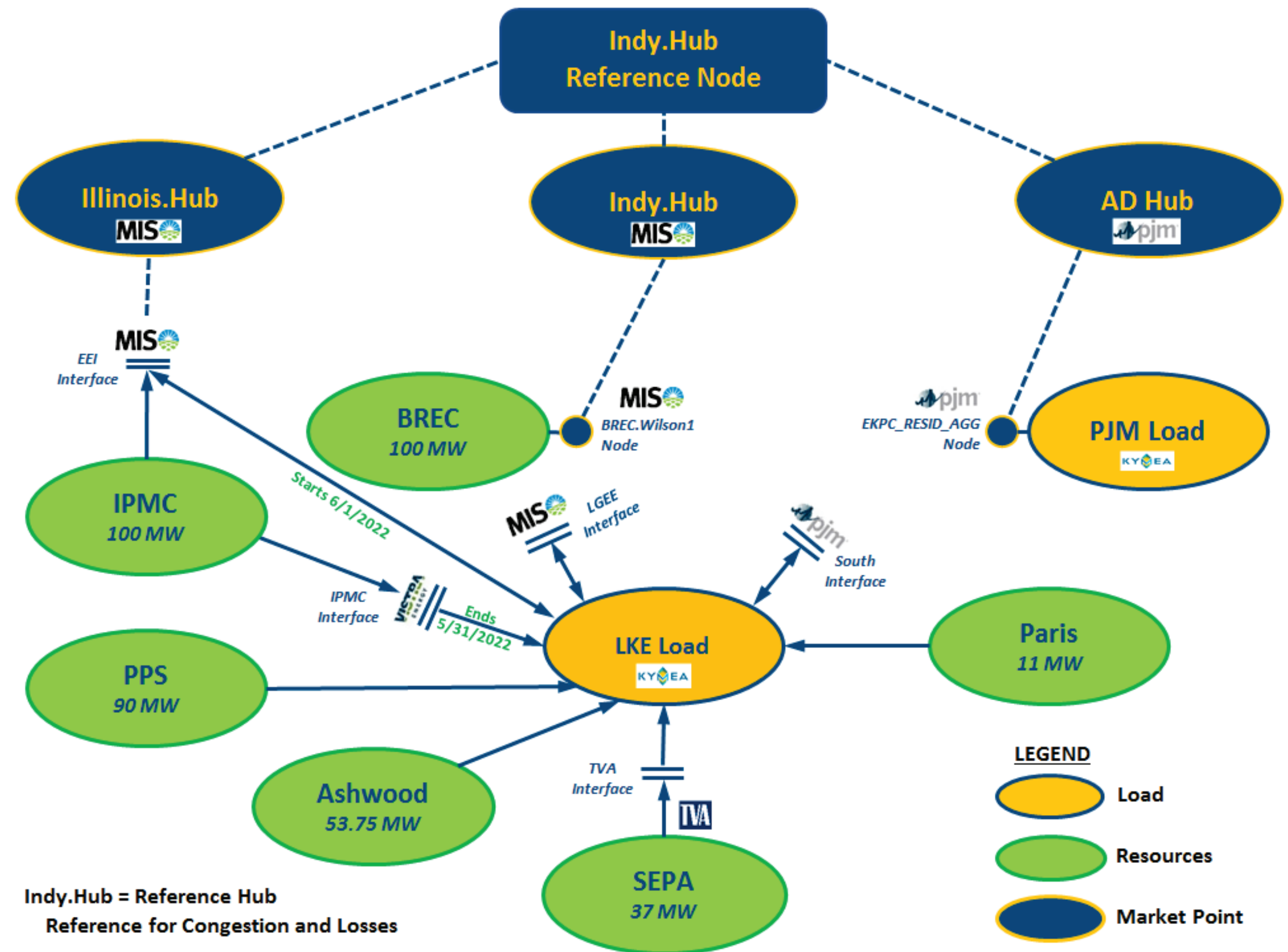
Scenario 2 (Paducah remains at 90 MW)



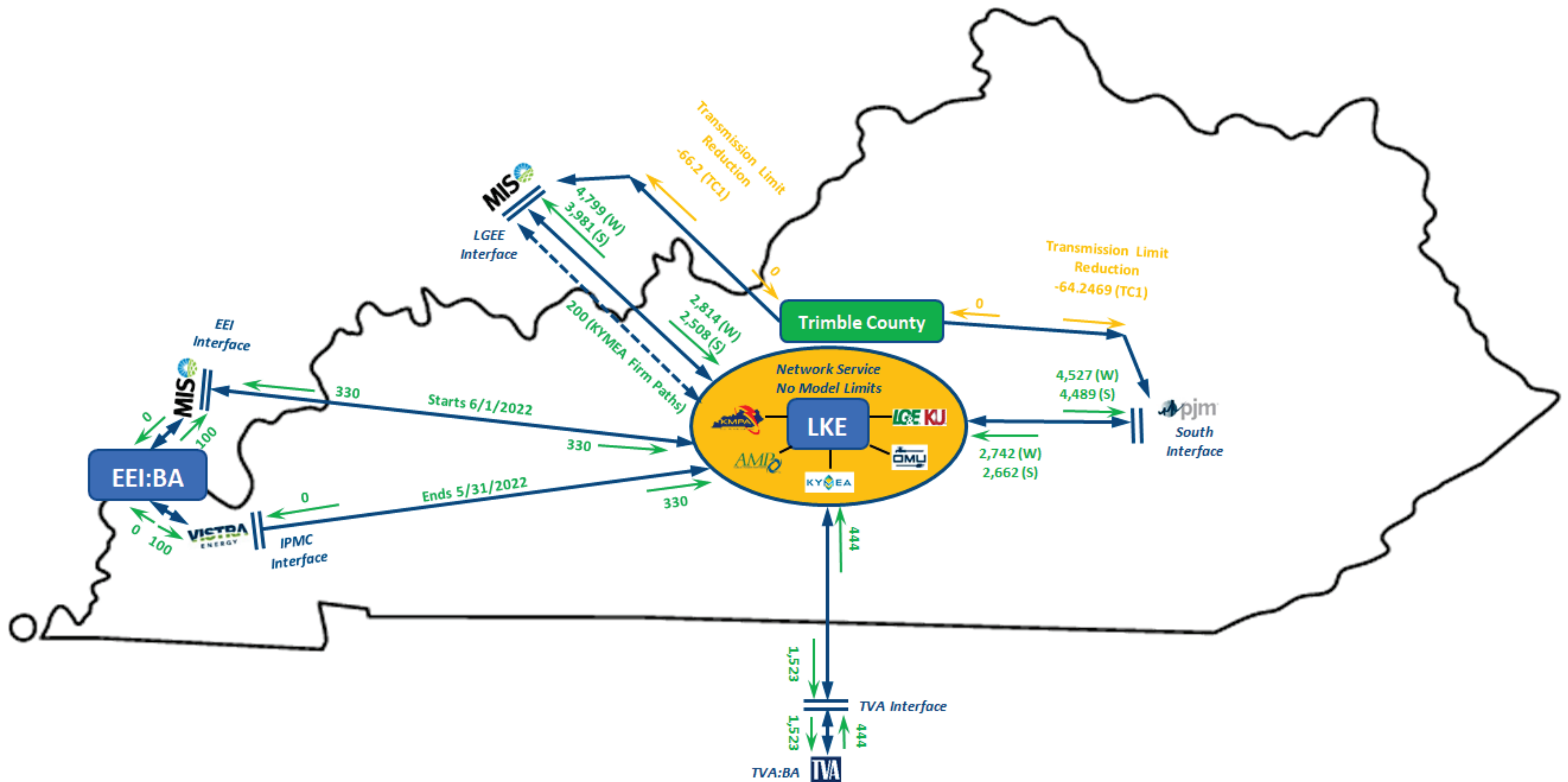
Portfolio Optimization

Continue to work portfolio optimization strategies.

- MISO-LGEE Interface (firm transmission and ramp constraints)
- PJM-South Interface
- IPMC (can either direct to KYMEA load or sell at EEI interface)
- SEPA Dispatch
- PPS Dispatch (optimal number of units to run)
- ITRON Load Forecast
- Working on data feedback loop



LKE Transmission System



RESOLUTION OF THE KENTUCKY MUNICIPAL ENERGY AGENCY

WHEREAS, the Kentucky Municipal Energy Agency ("KYMEA") desires to prepare an Integrated Resource Plan (the "IRP") for future power sources to serve KYMEA and its Members; and

WHEREAS, the IRP will be developed under the direction of KYMEA's President and CEO and the other KYMEA officers; and

WHEREAS, KYMEA desires to plan for its future power sources with a broad range of opportunities that may include KYMEA participation with other public agencies, municipal electric systems, joint agencies, cooperatives or independent operators, within or without the Commonwealth of Kentucky ("Potential Participants") who may be soliciting or needing power resources; and

WHEREAS, one or more Potential Participants, who are considered a public agency, may desire or request membership in KYMEA as such Potential Participant is soliciting proposals for power resource requirements for itself; and

WHEREAS, the KYMEA Board acknowledges that it may be mutually beneficial to KYMEA and its Members to plan jointly with Potential Participants for the purpose of participation with KYMEA in acquiring power resources and developing the IRP;

NOW THEREFORE BE IT RESOLVED:

Section 1. That KYMEA officers are hereby directed to develop an IRP, which may include joint resources with Potential Participants, and the KYMEA officers may review, disseminate and receive information relating to potential power resources, subject however to information which KYMEA officers determine should not be disclosed by KYMEA or any of its Members due to its confidential nature or any non-disclosure agreements.

Section 2. The President and CEO and other officers are authorized and directed to undertake and exercise such strategies and options as they deem necessary or prudent to develop a comprehensive IRP and to communicate with Potential Participants, for as long as there appears to be opportunities for potential benefits of the parties, that may include an ongoing relationship between KYMEA and one or more Potential Participant for the purposes of power supply planning, transmission facility planning and coordination, and potential membership in KYMEA.

Section 3. For the purpose of affecting the desires of the Board as set forth in this Resolution and to provide assistance, direction and guidance, if needed, to the President and CEO and other officers, the Executive Committee is directed to meet as necessary in the absence of the Board being able to meet and provide such assistance, direction and guidance.

Action Items



Public Comments



Upcoming Meetings and Other Business

The KYMEA Board of Directors shall hold its regular meetings on the fourth Thursday of each month, except for the months of November and December when the regular meeting shall be held on the third Wednesday. The regular meetings shall convene and commence at 10:00 AM Eastern time on said dates. The regular meetings shall be held at the KYMEA Board Room, 1700 Eastpoint Pkwy, Suite 220, Louisville, Kentucky.



Closed Session



Closed Session Authorization for August 22, 2019 KYMEA Board Meeting

Approval to enter into Closed Session pursuant to KRS 61.810(1)(c); KRS 61.810(1)(k); KRS 61.878(1)(c) and KRS 61.878(1)(j) for the purpose of:

- (i) discussing proposed, potential or pending litigation relating to KYMEA and its members relating to transmission issues;
- (ii) discussing proposed or potential power purchases or sales that have been disclosed in confidentiality to KYMEA; and
- (iii) discussing the market report and KYMEA's future and potential hedging strategy

KRS 61.810(1)(c) allows for closed session for the purpose of discussing proposed, potential and pending litigation relating to the agency.

KRS 61.810(1)(k) and 61.878(1)(c) allow for closed session where discussions regarding records or information disclosed to the agency or required to be disclosed to the agency as confidential or proprietary would, if disclosed by the agency, provide an unfair advantage to competitors of the entity disclosing such information.

KRS 61.810(1)(k) and 61.878(1)(j) allow for closed session where presentation, discussion and review of preliminary recommendations and preliminary memoranda in which opinions are expressed or policies formulated or recommended.

Actions Related to Matters Discussed in Closed Session

None Expected



Adjournment

