

ROOM FINISH SCHEDULE											
ROOM NO.	ROOM NAME	FLOOR FINISH	BASE FINISH	NORTH WALL	EAST WALL	SOUTH WALL	WEST WALL	CEILING FINISH	Sign Type	COMMENTS	
136	CLASSROOM	VCT1	R81	P1	P1	P2	P1	APC1	Type 1		
137	SCIENCE CLASSROOM	VCT1	R81	P2	P1	P1	P1	APC1	Type 1		
225	CLASSROOM	VCT1	R81	P1	P1	P2	P1	APC1	Type 1		
226	CLASSROOM	VCT1	R81	P2	P1	P1	P1	APC1	Type 1		
227	STORAGE	Epoxy Painted Concrete	Color matching caulk	P1	P1	P1	P1	APC1	Type 1		
C1D	CORRIDOR	VCT1-VCT4	R81	P1	P1	P1	P1	APC1 & P3 Painted Cyp	Type 3	RST1 at stairs; RT1 at stair landing. Refer to plan notes for VCT pattern.	
C2D	CORRIDOR	VCT1-VCT4	R81	P1	P1	P1	P1	APC1	Type 2	RST1 at stairs; RT1 at stair landing. Refer to plan notes for VCT pattern.	

FINISH LEGEND		
SPEC SECTION	KEY	BASIS OF DESIGN
06 41 00	SS1	SOLID SURFACE COUNTER - RESTROOM (TBD)
09 51 13	APC1	ARMSTRONG 224 - FINE FISSURED
09 51 13	RT1	RUBBER TILE
	VCT1	VINYL COMPOSITION TILE - ARMSTRONG - COLOR NO.1
	VCT2	VINYL COMPOSITION TILE - ARMSTRONG - COLOR NO.2
	VCT3	VINYL COMPOSITION TILE - ARMSTRONG - COLOR NO.3
	VCT4	VINYL COMPOSITION TILE - ARMSTRONG - COLOR NO.4
09 65 13	R81	TYP. 4" H RUBBER COVE BASE
	RST1	RESILIENT STAIR TREAD & RISER
09 91 23	P1	TYPICAL PAINT
	P2	ACCENT PAINT
	P3	CEILING PAINT
	P4	PAINT AT METAL
12 24 13	RWS1	MANUAL ROLLER WINDOW SHADES
12 34 50	SLC1	SCIENCE LAB CASEWORK - WOOD BASE & WALL CABINETS
	SLC2	SCIENCE LAB CASEWORK - EPOXY COUNTERTOP

OPTIMUM MOUNTING HEIGHTS	
ITEM (DIMENSION TO)	
VISUAL DISPLAY BOARDS - MARKER, TACK, CHALK	TOP 78" BOTTOM 30"
COUNTERTOP: STANDING POSITION (TOP)	34"
DESKTOP/TABLETOP: SEATED POSITION (TOP)	24"
PANIC DEVICE DOOR HARDWARE (CENTERLINE)	36"
FIRE EXTINGUISHER CABINET (BOTTOM)	32"
FIRE EXTINGUISHER CABINET (CENTER OF VALVE LINE)	64"
COAT HOOK (CENTERLINE)	48"

EQUIPMENT LEGEND	
A6 6'-0"W X 4'-0"H MARKERBOARD	REFER TO SPECIFICATION
A12 12'-0"W X 4'-0"H MARKERBOARD	REFER TO SPECIFICATION
B6 6'-0"W X 4'-0"H TACKBOARD	REFER TO SPECIFICATION
B8 8'-0"W X 4'-0"H TACKBOARD	REFER TO SPECIFICATION
C OWNER PROVIDED SMARTBOARD	NIC

MATERIAL REFERENCE	
123450.A	Wood Laboratory Casework
123450.A1	Wood Base Cabinet
123450.A2	Wood Accessible Sink Base Cabinet & Slant Enclosure Panel
123450.A4	Wood Wall Cabinet
123450.A7	Wood Full-Height Wardrobe Cabinet w/ Lock
123450.A11	Wood Demo Desk
123450.B1	Epoxy Countertop w/ Backsplash
123450.B4	Epoxy Under-mount Sink
123450.C11	Eyewash
123450.D1	Finished End
123450.E2	Peg Board with Drip Trough & Hose - Resin

ROOM FINISH NOTES

- ALL WALLS, GYPSUM BOARD CEILINGS, METAL DECKING, STRUCTURAL ELEMENTS, CONDUIT, ALL UNFINISHED SURFACES EXPOSED AFTER CONSTRUCTION IS COMPLETE SHALL RECEIVE PAINT UNLESS OTHERWISE NOTED.
- ALL UNFINISHED EXTERIOR SURFACES INCLUDING CONCRETE BLOCK, STEEL LINTELS, ETC., WILL RECEIVE A PAINT SYSTEM. REFER TO THE SPECIFICATION FOR ADDITIONAL INFORMATION.
- REFER TO FLOOR PLANS FOR WALL ASSEMBLY TYPES.
- REFER TO REFLECTED CEILING PLANS FOR ADDITIONAL INFORMATION ON CEILINGS AND SOFFIT LOCATIONS.
- PROVIDE COLOR MATCHING CAULK AT THE INTERSECTION OF HOLLOW METAL FRAMES AND HARD SURFACE FLOORING, TYP.
- WHERE FLOOR TILE BORDERS/PATTERNS OCCUR, THE CENTER FIELD TILES SHALL BE FULL SIZE TILES AND THE BORDER TILES ALONG THE WALL SHALL BE CUT TO CENTER THE FIELD TILES.
- ALL FURNITURE/EQUIPMENT SHOWN DASHED IS FOR REFERENCE ONLY AND IS NOT IN THIS CONTRACT.
- ALL CASEWORK TOE KICK AREAS AND/OR OTHER CASEWORK SURFACES WHICH ABUT FLOOR FINISHES WILL RECEIVE RESILIENT BASE.
- WHERE MARKERBOARDS AND TACKBOARDS ARE TOO WIDE FOR THE LOCATION INDICATED, THE SUPPLIER SHALL NOTIFY THE DESIGNER AND MODIFY THE WIDTH ACCORDINGLY.
- PAINTING SHALL INCLUDE STAIR ASSEMBLY COMPONENTS INCLUDING STRINGER, HANDRAILS, ETC.
- COUNTERTOP & SHELVING BRACKETS (WHERE APPLICABLE) WILL BE EQUAL TO A&M HARDWARE STEEL BRACKETS. SIZES SHALL ACCOMMODATE THE VARIUS DEPTHS INDICATED IN THE DRAWINGS.
- ALL DOVERS, GRILLS, REGISTERS & DIFFUSERS SHALL BE PAINTED TO MATCH THE SURFACE ON WHICH THEY OCCUR.

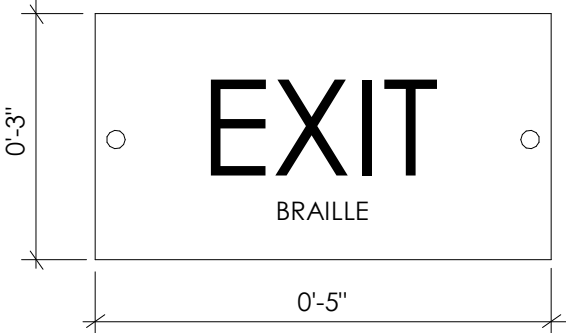
SIGNAGE TYPES

SEE SPECIFICATION 101.424 FOR SIGN MANUFACTURING AND INSTALLATION DETAILS

SIGN TYPE 1 (TYPICAL): TYPICAL 8"H X 8"W PANEL SIGN - REFER TO SPECIFICATION FOR DETAILS ON MATERIALS AND MECHANICAL MOUNTING DETAILS

SIGN TYPE 2 (EXIT STAIR): TYPICAL 8"H X 8"W PANEL SIGN WITH SYMBOL; EXIT STAIR SIGN WITH BRAILLE AND CONFORMING TO CODE STANDARDS WITH TEXT "EXIT STAIR DOWN" - REFER TO SPECIFICATION FOR DETAILS ON MATERIALS AND MECHANICAL MOUNTING DETAILS

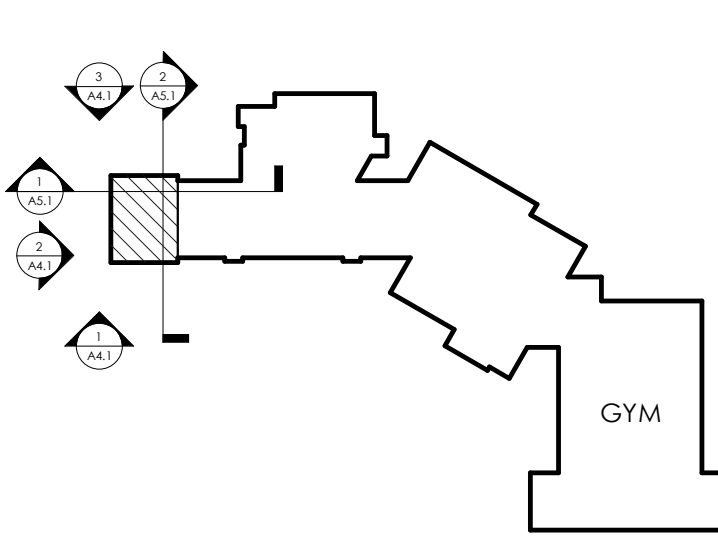
SIGN TYPE 3 (EXIT): 3"H X 5"W PANEL SIGN AS SHOWN BELOW THAT CONFORMS TO CODE STANDARDS, TWO SCREWS FOR MECHANICAL MOUNT.



EPOXY SINK LEGEND

- EP-1 EPOXY UNDERMOUNT SINK INTEGRAL TO SPECIFIED CASEWORK
- EP-2 ADA EPOXY UNDERMOUNT SINK INTEGRAL TO SPECIFIED CASEWORK
- EP-3 EPOXY UNDERMOUNT SINK W/ DRAINBOARD INTEGRAL TO SPECIFIED DRAINBOARD SINK CABINET
- EP-4 EPOXY UNDERMOUNT SINK INTEGRAL TO SPECIFIED DEMO DESK

KEY PLAN



SCALE: NTS

PROVIDE MANUFACTURER'S ADA ACCESSIBLE SINK BASE CABINET DESIGN. ENSURE ALL DIMENSIONS, HEIGHTS AND CONSTRUCTION MEET ADA ACCESSIBILITY REQUIREMENTS. COORDINATE CABINET CONSTRUCTION WITH SINK SIZES AND LOCATIONS.

ADA ACCESSIBILITY GUIDELINES  
4.19.2 LAVATORY HEIGHTS & CLEARANCES

LAVATORIES SHALL BE MOUNTED WITH THE RIM OR COUNTER SURFACE NO HIGHER THAN 34 IN (865 mm) ABOVE THE FINISH FLOOR. PROVIDE A CLEARANCE OF AT LEAST 29 IN (735 mm) ABOVE THE FINISH FLOOR TO THE BOTTOM OF THE APRON. THE FOLLOWING KNEE CLEARANCE IS REQUIRED UNDERNEATH THE LAVATORY: 27 IN (685 mm) MINIMUM FROM THE FLOOR TO THE UNDERSIDE OF THE LAVATORY WHICH EXTENDS 8 IN (205 mm) MINIMUM MEASURED FROM THE FRONT EDGE UNDERNEATH THE LAVATORY BACK TOWARDS THE WALL; IF A MINIMUM 9 IN (230 mm) OF TOE CLEARANCE IS PROVIDED, A MAXIMUM OF 6 IN (150 mm) OF THE 48 IN (1220 mm) OF CLEAR FLOOR SPACE REQUIRED AT THE FIXTURE MAY EXTEND INTO THE TOE SPACE. (4.19.2, 4.19.6)

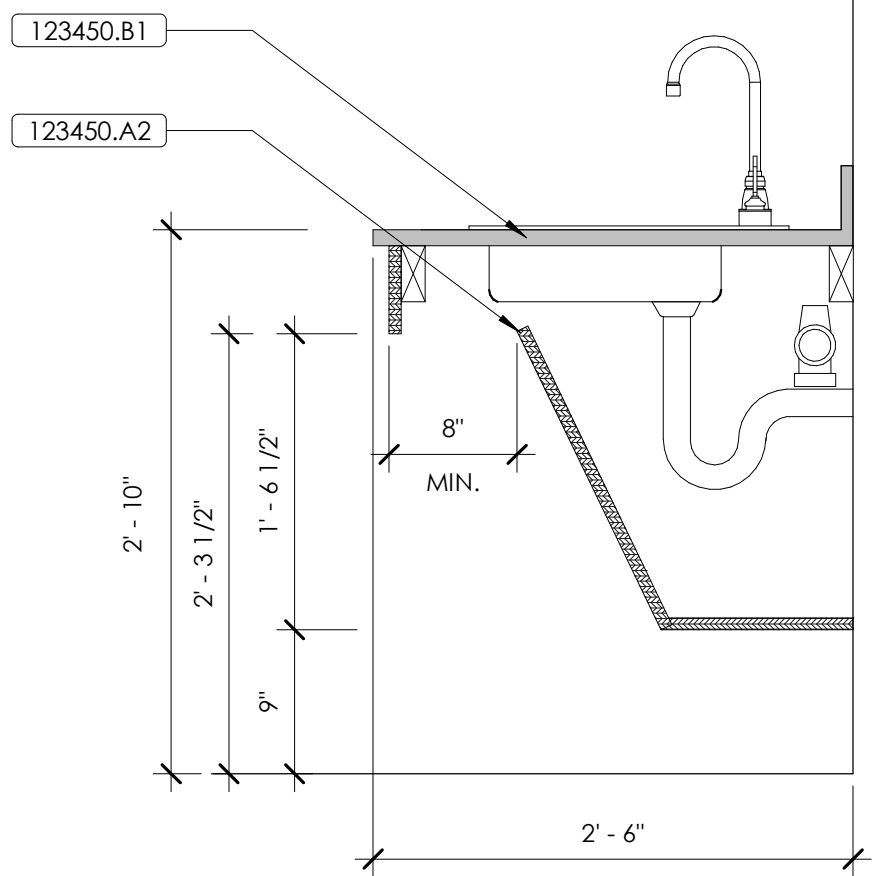
EXCEPTION 1: LAVATORIES USED PRIMARILY BY CHILDREN AGES 6 THROUGH 12 SHALL BE PERMITTED TO HAVE AN APRON CLEARANCE AND A KNEE CLEARANCE 24 IN (610 mm) HIGH MINIMUM PROVIDED THAT THE RIM OR COUNTER SURFACE IS NO HIGHER THAN 30 IN (760 mm).

EXCEPTION 2: LAVATORIES USED PRIMARILY BY CHILDREN AGES 5 AND YOUNGER SHALL NOT BE REQUIRED TO MEET THESE CLEARANCES IF CLEAR FLOOR SPACE FOR A PARALLEL APPROACH COMPLYING WITH 4.2.4 IS PROVIDED.

FOR MORE INFORMATION, REFER TO: <http://www.access-board.gov/adaag/html/adaag.htm#4.19>

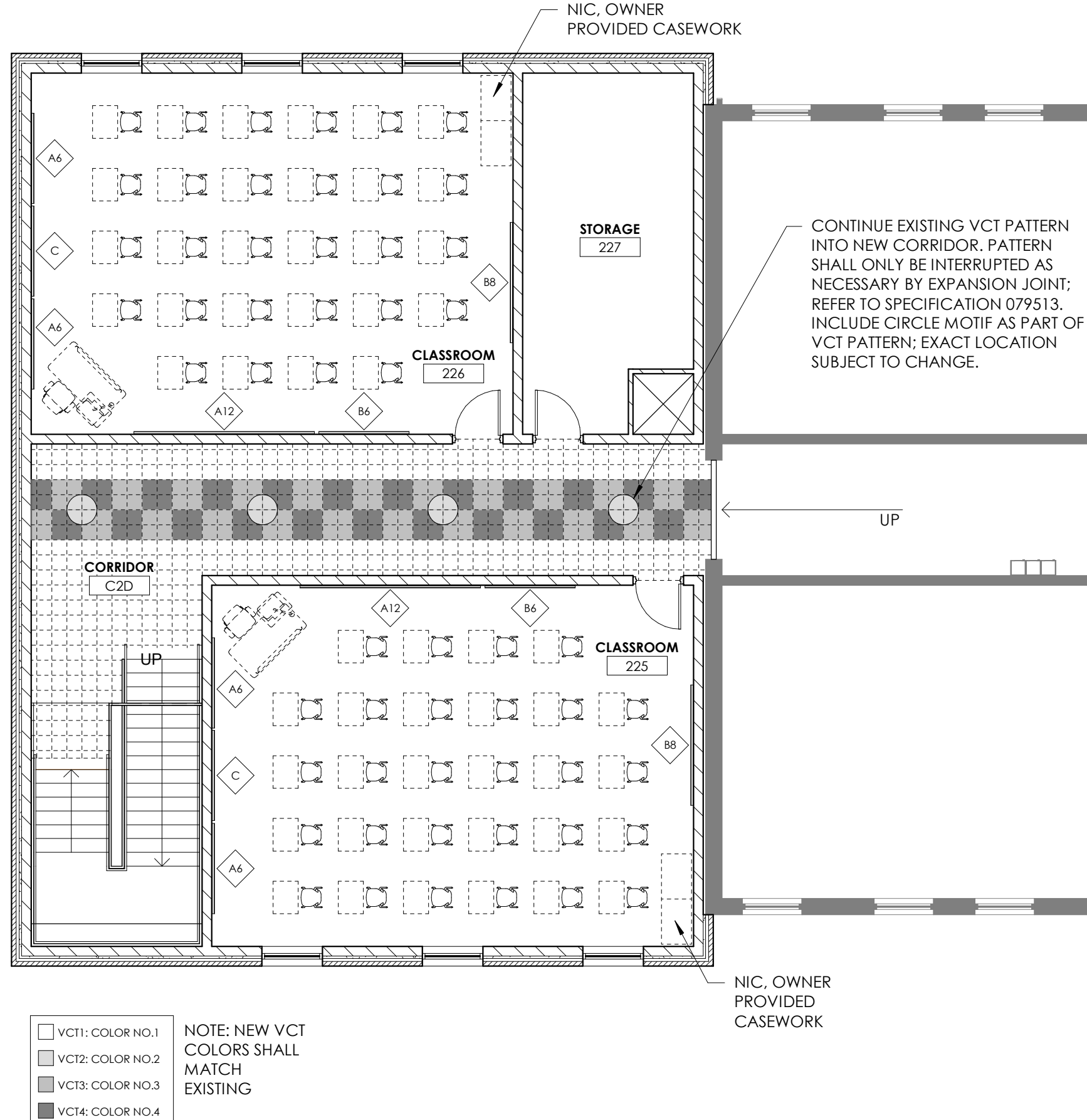
NOTE: SPEC. 123450

ADA SINK SECTION  
1" = 1'-0"



PER 306.3 & 306.2

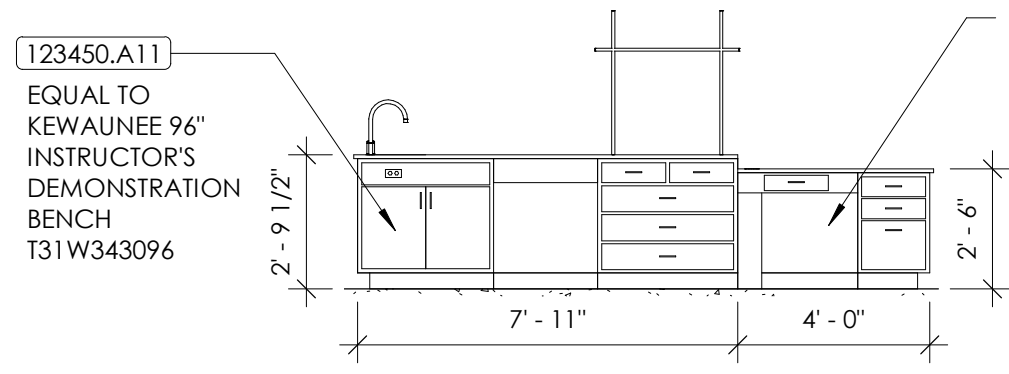
SECOND FLOOR PLAN - FF&E  
1/8" = 1'-0"



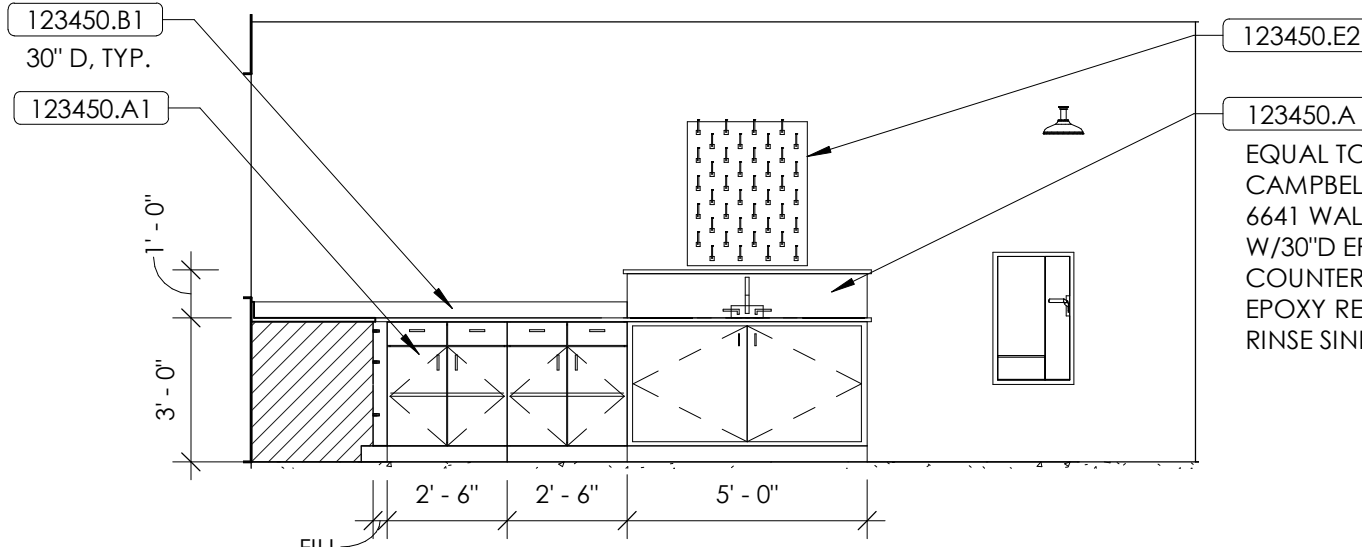
- VCT1: COLOR NO.1
- VCT2: COLOR NO.2
- VCT3: COLOR NO.3
- VCT4: COLOR NO.4

NOTE: NEW VCT COLORS SHALL MATCH EXISTING

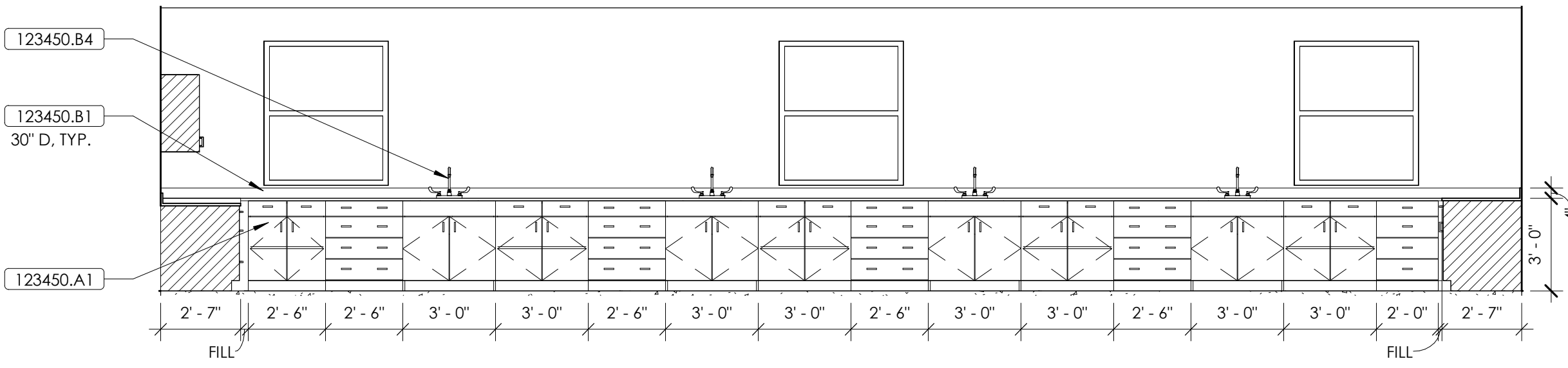
DEMO DESK  
1/4" = 1'-0"



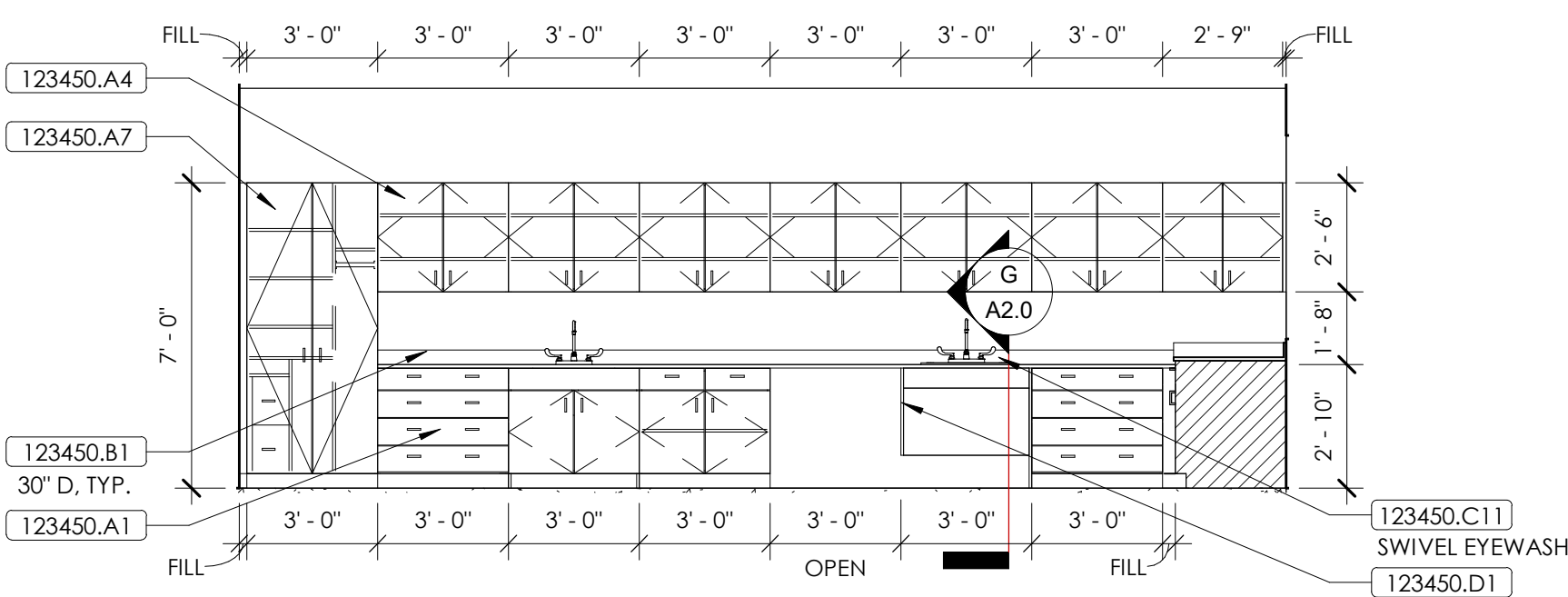
SCIENCE CLASSROOM - PLAN EAST  
1/4" = 1'-0"



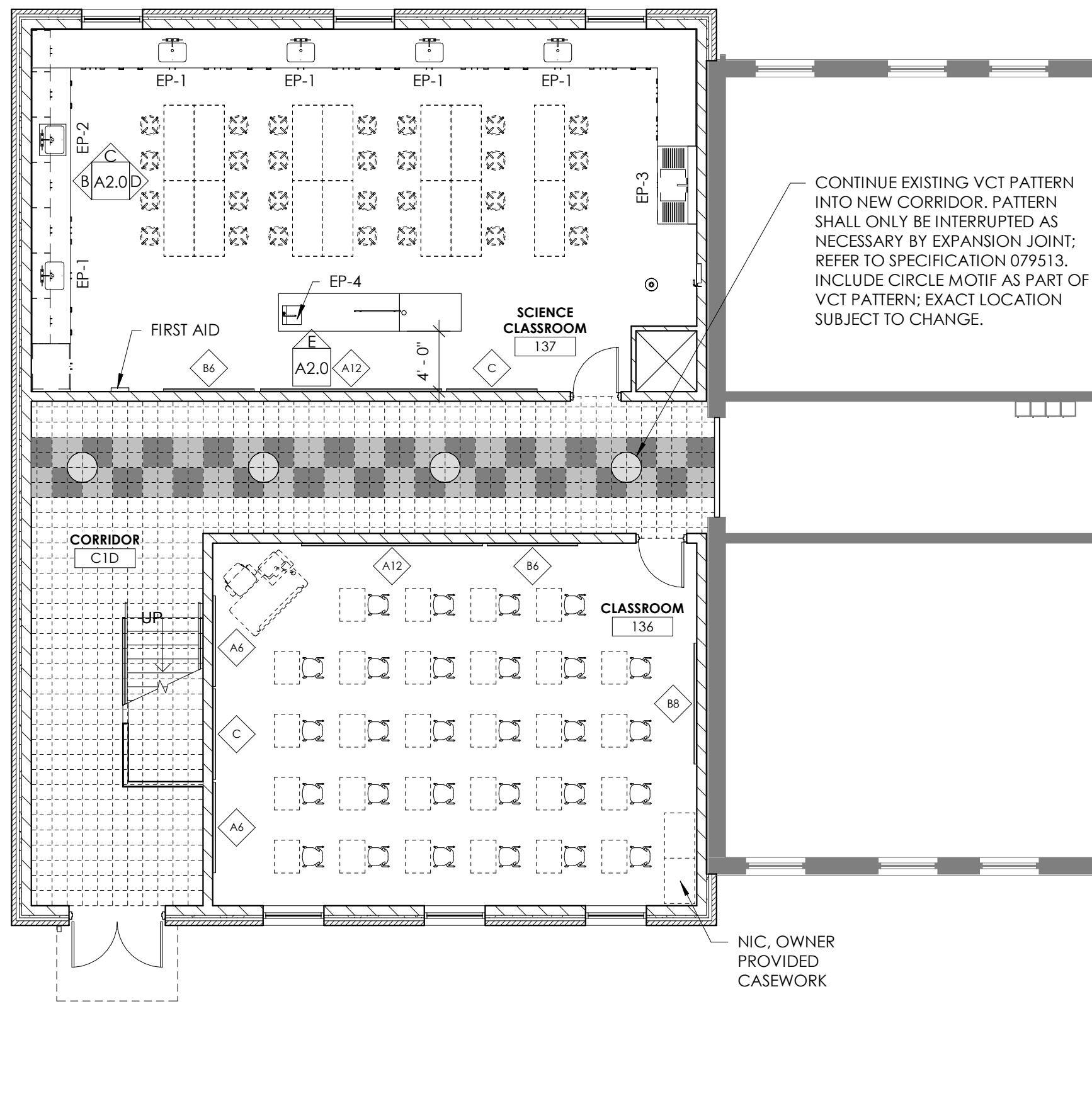
SCIENCE CLASSROOM - PLAN NORTH  
1/4" = 1'-0"



SCIENCE CLASSROOM - PLAN WEST  
1/4" = 1'-0"



FIRST FLOOR PLAN - FF&E  
1/8" = 1'-0"



FLOOR PLANS FF&E  
FOR:  
MARION COUNTY BOARD OF EDUCATION  
LEBANON, KENTUCKY

M.E.&P. Engineer:  
CMLA, Inc.  
2429 Members Way  
Lexington, KY 40504  
p 859.253.0892

Structural Engineer:  
Structural Design Group, Inc.  
220 Great Circle Rd., Suite 106  
Nashville, TN 37228  
p 615.255.5537

BG#

Project No: 1928  
Drawn By: AC  
Rev'd By: DC

SHEET RELEASE

1	
2	
3	
4	
5	
6	
7	
8	

COPYRIGHT © 2019  
DESIGN DEVELOPMENT

A2.0

FLOOR PLANS FF&E

DATE ISSUED:  
AUGUST 01, 2019

rosstant  
architects

101 old layette avenue leaington, kentucky 40302 p 859.254.4018