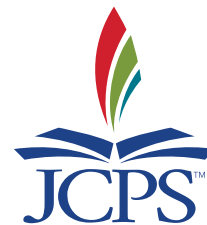




JEFFERSON COUNTY
PUBLIC SCHOOLS

STUDENT SUPPORT AND BEHAVIOR INTERVENTION HANDBOOK

2019-20



Please cut this form from the booklet, and return it to your child's teacher.

Student's Name

Teacher



JEFFERSON COUNTY BOARD OF EDUCATION
Louisville, Kentucky

ACKNOWLEDGMENT OF RECEIPT OF THE

***Student Support and Behavior Intervention Handbook
and the Student Bill of Rights***

As the parent/guardian of _____, I have read and discussed the *Student Support and Behavior Intervention Handbook* and the *Student Bill of Rights* with my child. I grant permission for my child to access the Internet, electronic mail, and the JCPS Backpack of Success Skills, including all related GoogleSuite for education services through the JCPS Network and have conveyed to my child the standards outlined on page 45.

Parent's/Guardian's Signature

Date

Parent's/Guardian's Signature

Date

Student's Signature

Date

Please sign this form, and return it to the school office within one month from distribution.



Directory Information Opt-Out Form

FOR ALL STUDENTS

The district has designated a student's name, address, grade level, honors and awards, photograph including use of student photographs in school District publications, school District social media, on the school District's website and the news media, video or film of students when filmed by the District for educational purposes or for promotional use or filmed by news media, and major field of study shall constitute directory information. Photos and video that would generally be considered harmful or an invasion of privacy if disclosed are not directory information. The district has also designated a student's date of birth as directory information only for purposes of the U.S. Department of Education Free Application for Federal Student Aid (FAFSA) Completion Project. All Kentucky high schools report directory information plus course enrollment and student emails to the Kentucky Higher Education Assistance Authority (KHEAA) for students enrolled in dual-credit courses for financial aid purposes. If you do not want this information released to people requesting directory information, the parent/guardian or eligible student (18 years of age or older) must sign this form and return it to the school office within one month after enrollment. This opt-out request will remain in effect for the current school year only.

I hereby exercise my rights under state and federal law and hereby request that the name, address, grade level, honors and awards, photograph (excluding video records), major field of study, and date of birth (for FAFSA Completion Project) of

_____ (student name), currently a student at _____

_____ (school name), **not** be released without prior written consent. I understand that this opt-out request will remain in effect for the current school year only.

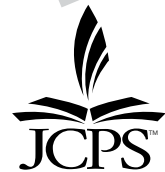
Signed by (Check one.): ☐ Eligible Student ☐ Parent/Guardian

Signature

Name (Please print.)

Address

City/State/ZIP



Military Recruiter Opt-Out Form

FOR HIGH SCHOOL STUDENTS ONLY

If you do not want the student's name, address, and telephone number released to military recruiters, the student (regardless of age) or parent/guardian must sign this form and return it to the school office within one month after enrollment. If a Military Recruiter Opt-Out Form has been submitted at any time since August 2013, another submission is not necessary. Jefferson County Public Schools policy is to release the directory information of the current juniors and seniors one month after the start of each school year. In order to be opted out, students must have submitted this form before that time in their junior year.

I hereby exercise my rights under state and federal law and hereby request that the name, address, and telephone number of _____ (student name), currently a student at _____

_____ (school name), not be released to military recruiters without prior written consent.

I understand that this opt-out request will remain in effect for my entire high school career and that I can revoke this option at any time by notifying my school and/or school district in writing of my decision.

Signed by (Check one.): ☐ Eligible Student ☐ Parent/Guardian

Signature

Name (Please print.)

Address

City/State/ZIP



A MESSAGE FROM THE SUPERINTENDENT

In Jefferson County Public Schools (JCPS), we have high expectations for each of our students and proudly offer a variety of schools, programs and activities to engage students throughout their academic journey. As Kentucky's largest school district, and a leading district throughout the country, JCPS provides unique learning opportunities to more than 98,000 students across 168 schools. Together, we aim to inspire, uplift, and enable our students to reach their greatest potential in an ever-changing world.

All of our schools share an unwavering focus on three key pillars, which collectively are earning JCPS national recognition for our innovative approaches to education: Backpack of Success Skills, racial equity, and our ongoing commitment to culture and climate.

I invite you to review this handbook, which serves as a guide for students, families, and staff to increase engagement, foster adult-student relationships and find ways to connect with our schools. The handbook includes expectations for district, school, and classroom procedures to assist in understanding and navigating JCPS policies. Additionally, it provides information on progressive discipline and consequences related to various behaviors and infractions.

We are committed to strengthening the culture and climate in each of our schools and across our entire district. We know that a positive school culture, healthy academic learning climate, and focus on increased student engagement, lead to meaningful school experiences, positive behavior, improved morale and greater achievement for our students.

I will continue to work diligently to make certain every stakeholder sees improvement in the support provided to JCPS students, schools, teachers, and staff members. Together, we can make a difference for all students.



Dr. Martin "Marty" Pollio
Superintendent



The Student Support and Behavior Intervention Handbook and the Student Bill of Rights shall be posted at each school.

For harassment/discrimination issues, contact the JCPS Compliance and Investigations Director at **485-3341**.

TABLE OF CONTENTS

A Message From the Superintendent
Introduction
Backpack of Success Skills
What Is It?
Why Now?
Key Benefits
Our Goal
How Does It Work?
Office of Climate and Culture: Supporting Our Students and Building Community
Focus Area 1: Improving School Culture
Focus Area 2: Increasing Engagement
Focus Area 3: Fostering Relationships
Instructional and Behavioral Supports
High-Yield Pedagogy
Positive Behavior Interventions and Supports
Restorative Practices
Foundational Training and Knowledge
Creating Trauma-Sensitive Schools to Improve Learning
Social Emotional Learning
Rights and Responsibilities of Entire JCPS Community
Student Rights and Responsibilities
Parent/Guardian Rights and Responsibilities
Teacher/Staff Rights and Responsibilities
School Administrator Rights and Responsibilities
Central Office Rights and Responsibilities
Board of Education Rights and Responsibilities
Protections for Students With a Disability
Deeper Learning Characteristics
Progressive Discipline Process
Discipline Procedures for Early Childhood Preschool Students
Due Process
Right to Counsel
Parent/Guardian Conference
Retaliation and Discrimination Prohibited
Attendance/Tuancy Policy
Make-Up Work
Behavior and Range of Corrective Strategies
Suspension Procedures
Formal Hearing
Suspension Procedures for ECE Students
Manifestation Determination
Referral to Alternative Placement for ECE Students
Suspension Procedures for Students Disabled Under Section 504

Due Process and Appeal	
Appeal Procedure for Short-Term/Local School Suspensions—One to Three School Days	
Appeal Procedure for District Suspensions—Six to Ten School Days	
Appeal Procedure for District Suspension With Recommendation for Referral to an Alternative Placement	
Appeal Procedure for Referral to an Alternative Placement	
Appeal Process	
Alternative Placement	
Offenses Where Alternative Placement Is Considered	
Unacceptable Behavior—Definitions	
Arson	
Assault/Sexual Abuse/Sexual Assault/Criminal Abuse	
Bullying/Cyberbullying	
Drug/Alcohol/Tobacco/Electronic Cigarette Distribution	
Drug/Alcohol Possession/Under the Influence	
Fighting/Striking Faculty, Staff, or Other Officials	
Fighting/Striking Student	
Forgery/Counterfeiting	
Gambling	
Inappropriate Sexual Behavior	
Inappropriate Use of District Technology	
Intimidation/Harassment/Harassing Communications Toward Staff	
Intimidation/Harassment/Harassing Communications Toward Student	
Profanity/Vulgarity	
Profanity/Vulgarity Toward Staff	
Robbery	
Theft/Vandalism	
Use/Possession of Tobacco Products and Electronic Cigarettes	
Violation of Personal Electronic/Telecommunication Device Policy	
Weapons/Dangerous Instruments	
Look-Alike Weapons	
Criminal Violations	
Bus Safety	
Student Searches	
Removal From the Classroom	
Bullying	
School Resource Officers	
Physical Restraint and Seclusion	
Safe Schools	
Student Bill of Rights Preamble	
Discrimination Grievance Procedure	
Index	

If you need assistance in reading or understanding any part of this communication, please contact your child's school for language support. The school will schedule a professional interpreter in person or over the phone to provide oral translation

INTRODUCTION

Jefferson County Public Schools (JCPS) is responsible for providing a safe and orderly school environment where all students receive a quality education. This access to a quality educational environment is a right given to each student through Kentucky law. The Kentucky Revised Statute (KRS) 158.440 states, "Every student should have access to a safe, secure, and orderly school that is conducive to learning." Responsible behavior of students, parents, teachers, and other district personnel is essential to ensuring this right.

The Student Support and Behavior Intervention Handbook (SSBIH), reviewed and developed collaboratively by the SSBIH Revision Committee, seeks to provide a clear picture to guide all JCPS stakeholders in the fair and equitable application of behavior support systems provided by the district. Committee Members supporting these efforts include, but are not limited to teachers, administrators, parents, General Counsel, the Kentucky Department of Education, and JCPS staff with unique expertise in students with disabilities, truancy, behavior supports, social emotional learning, cultural competence and early childhood learners. All committee meetings are open to the public with relevant materials posted to KSBA.

The handbook is intended to be instructive, not punitive; is based on the principle of positive and preventive discipline (e.g., interventions and skill building); and is aimed at addressing the causes of misbehavior, resolving conflict, meeting students' needs, and keeping students in school. Staff members will attempt to resolve disciplinary problems by every means before removing a student from the classroom and/or school.

The handbook seeks to clearly define expectations for acceptable behavior, identify the possible consequences of unacceptable behavior, and ensure that discipline when necessary is administered promptly and equitably. *The Student Support Behavior and Intervention Handbook* applies to all students, school personnel, parents, and other visitors when on school property or attending a school function. School administrators are expected to develop and implement a plan with teachers to ensure expected behaviors are intentionally taught, modeled, learned and reviewed to ensure student understanding and success.

All students are expected to use this handbook as a guide to learn what expected behaviors are, what supports are in place, and what the response to inappropriate behaviors will be. The expectations outlined in this handbook will be in effect from the time the student leaves home for school until the time he or she returns home. This includes time spent at the bus stop, on the bus, at school-sponsored events, and on school property.

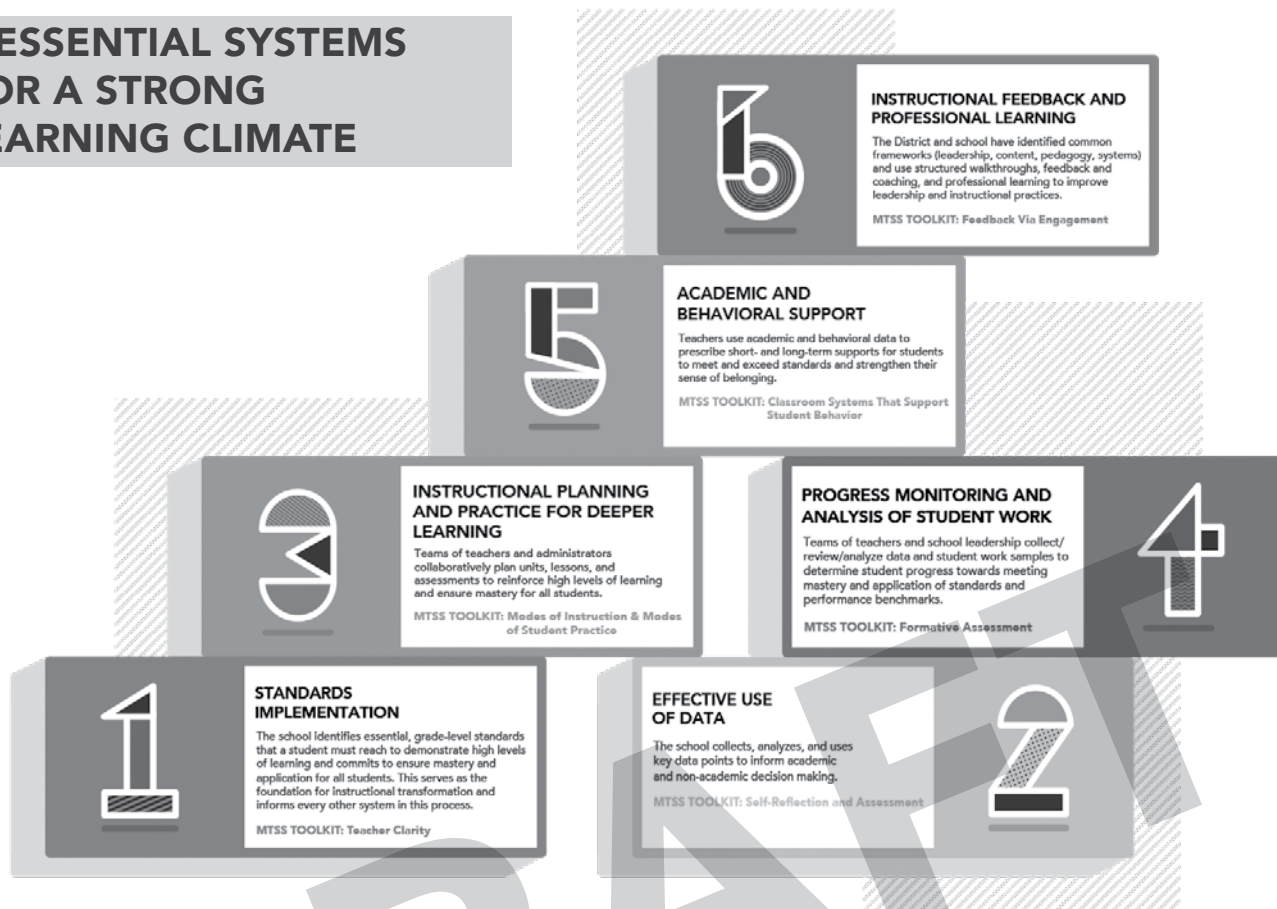
JCPS values our diversity and strives to be inclusive and aware of the cultural differences of our students and staff while providing equitable opportunities and access.

Research has shown that disparity in suspension rates accounts for as much as one fifth of the black white achievement gap (Morris and Perry, 2016). Further exclusionary discipline exacerbates such consequences as apathy, anger and disengagement, which in turn increase the likelihood of more disciplinary action. When students perceive an unfair distribution of punishment, such as suspension, an environment of anxiety is created, with achievement outcomes decreasing, and students reporting less of a sense of belonging. (Bottiani, Bradshaw, & Mendelson, 2016; Perry & Morris, 2014)

The JCPS commitment to racial equity and our district Racial Equity Plan necessitates awareness, action, and accountability around all practices, especially culturally competent teaching, bias awareness and prevention training, and equitable treatment of ALL students. All staff members are expected to use this handbook fairly and without discrimination in every situation.

Additionally, we have taken measures to consider and be sensitive to a student's age and the developmental appropriateness of our Behavior and Range of Corrective Strategies. We know that at different stages of development, a student's capacity to understand his or her behavior develops and grows. Our handbook takes this into consideration and allows for such growth and maturity. As a result of JCPS's commitment to the critical importance of building and sustaining positive adult to student and student to student relationships, there is a renewed focus on celebrating and recognizing positive student behaviors, cultural competence, age-appropriate and developmentally appropriate supports and responses, and communication. Every student, parent/guardian, and school staff member receives a copy of this handbook and receives instructions on how to use it. Versions of this handbook were adopted by the Jefferson County Board of Education (JCBE) on November 21, 1977, and were revised in 1979, 1980, 1982, 1985, 1989, 1990, 1991, 1992, 1993, 1994, 1995, 1996, 1997, 1998, 1999, 2000, 2001, 2002, 2005, 2007, 2008, 2009, 2011, 2013, 2014, 2015, 2016, 2017, 2018, 2019.

6 ESSENTIAL SYSTEMS FOR A STRONG LEARNING CLIMATE



THE SIX ESSENTIAL SYSTEMS

A system is a purposeful aggregation of interconnected practices that, when implemented with fidelity, produce a cohesive synergy between teaching and learning. In JCPS, our systems are defined by shared beliefs, collective commitments, clear indicators of success, and alignment with our three JCPS Pillars: Culture and Climate, Racial Equity, and the Backpack of Success Skills. Systems are surrounded and influenced by their environment(s), described by their structure(s) and purpose(s), and expressed in their function(s).

SYSTEM

1

- **Purpose:** To align teaching and learning with rigorous standards.

- **Belief:** All students must be able to demonstrate high levels of learning, mastery and application of all Kentucky Academic Standards. This serves as the foundation for instructional transformation and informs every other system in this process.
- **Commitment:** JCPS Educators will teach the Kentucky Academic Standards and ensure that all students have the knowledge, skills, and dispositions for future success. JCPS Educators will have a deep working knowledge of the Kentucky Academic Standards and Practices.

SYSTEM

2

- **Purpose:** To improve performance by analyzing and acting on the evidence.

- **Belief:** The collection, analysis, and use of key data points informs academic and non-academic decisions.
- **Commitment:** JCPS Schools will implement a system and protocols designed to understand, analyze, and prioritize responses to relevant data within and across students, classrooms, departments, and the school.

SYSTEM

3

- **Purpose:** To enhance planning through shared responsibility and accountability.

- **Belief:** The collaborative planning process leads to effective and engaging instructional practices, such as choice in student assignments, rigorous demonstrations of learning, deep understanding of content and real-world applications with connections to success skills, and collective ownership of student mastery.
- **Commitment:** JCPS schools ensure that collaborative teams plan and deliver highly effective core instruction that is aligned to the approved curriculum, culturally responsive, and is accessible to all students in the classroom.

THE THREE PILLARS

Culture is defined as the underlying beliefs, values, assumptions, and ways of interacting that contribute to the unique interpersonal and intellectual environment of a school. Culture is shaped by the shared expectations, experiences, and philosophies of the school staff, as well as the values that guide adult behavior. It is expressed through shared attitudes, beliefs, and commitments. Culture also includes the organization's vision, values, norms, systems, symbols, language, assumptions, beliefs, and habits.

Culture and Climate

The National Center on Safe and Supportive Learning Environments defines school climate as "a broad, multifaceted concept that involves many aspects of the student's educational experience." They go on to say, "A positive school climate is the product of a school's attention to fostering safety; promoting a supportive academic, disciplinary, and physical environment; and encouraging and maintaining respectful, trusting, and caring relationships throughout the school community no matter the setting—from Pre-K/Elementary School to higher education (retrieved May 7, 2019, <https://safesupportivelearning.ed.gov>).

Racial equity is both an outcome and a process. As an outcome, racial equity is achieved when race no longer determines one's academic outcomes; when every student has what he/she needs to succeed, no matter the color of his/her skin, ethnicity, nationality, first language spoken. As a process, schools apply racial equity when students who have been marginalized by structural racial inequities are meaningfully involved in the creation and implementation of the institutional policies and practices that impact their lives. When we achieve racial equity: all students, including students of color, are owners, planners, and decision-makers in the systems that govern their lives. Equity will be achieved through acknowledgment and accountability for past and current inequities, resulting in all people, particularly those most impacted by racial inequities, being provided the infrastructure needed to thrive.

Racial Equity

The Backpack of Success is a P-12 initiative that ensures every single student receives an education in which academic achievement and personal development go hand-in-hand to empower students with skills they need to be successful students, professionals and citizens of our community. The focus of the backpack is to build upon a firm foundation in literacy and numeracy, that ensures all students will be actively engaged in their learning and ready for key educational transitions, all while developing the critical skills needed to be successful after graduation.

Backpack of Success

The purpose of the Six Essential Systems is to establish a common instructional language, provide a blueprint of the effective practices implemented by high-achieving schools, and to inform district-level support.

SYSTEM



- **Purpose:** To inform instructional decisions and increase student learning.

- **Belief:** The analysis of student progress data and student work is essential to determine the effectiveness of instructional practices and a student's mastery of standards.
- **Commitment:** JCPS Educators systematically track individual student progress toward standards-based competency during the instructional cycle. Samples of student work are analyzed to identify performance trends and instructional needs.

SYSTEM



- **Purpose:** To provide equitable learning opportunities for all.

- **Belief:** When provided the appropriate supports, all students can be successful with academics and behavior
- **Commitment:** Collaborative teams utilize key data points to determine short and long term supports for behavior and academics. Scheduled progress checks will be incorporated to ensure students receive timely supports which are adjusted as needed. The MTSS Handbook serves as a comprehensive plan and is implemented with fidelity.

SYSTEM



- **Purpose:** To cultivate continuous instructional improvement.

- **Belief:** An effective system for observing and coaching teachers throughout the year improves instructional practices and informs professional development.
- **Commitment:** Schools will implement a high-frequency walk-through system to provide individualized feedback and coaching for teachers multiple times throughout the year. A data monitoring system is used to measure impact and inform professional development.

OFFICE OF CLIMATE AND CULTURE: SUPPORTING OUR STUDENTS AND BUILDING COMMUNITY

Focus Area 1: Improving School Culture

School culture is the “story” of the school—the beliefs, norms, attitudes, and behaviors that play a key role in how the school operates on a daily basis. Research says that school culture is a driving force behind student achievement. School culture can be described on a continuum from positive to toxic. The interconnectedness of adults—and the relationships that are fostered from these dynamics—contribute to a positive or toxic school culture.

JCPS staff training and learning opportunities around Social-Emotional Learning and Trauma-Informed Care assist in establishing a healthy and positive school culture. We are committed to providing a safe, stable, and understanding environment that builds on the strengths of students and families who have been impacted by trauma. Additionally, children and families are provided information about treatment resources across various child-serving systems.

The *Student Support and Behavior Intervention Handbook* moves away from using solely punitive practices and toward using restorative approaches that build healthy communities, increase social capital, decrease antisocial behavior, repair harm, and restore relationships. The handbook moves from the singular focus on student safety to an integrated focus on creating a positive school culture that fosters student success.

Positive School Culture	Toxic School Culture
<ul style="list-style-type: none"> Relationship Building Behavioral Recognitions and Rewards Social-Emotional Skill Building Restorative Practices Compassion for Students Building Community 	<ul style="list-style-type: none"> Withdrawal/Isolation Focus on Negative Behavior Hostile Relationships Focus on Misbehaviors Punitive Policies and Practices Indifference to Needs of Students Individualistic Perspective

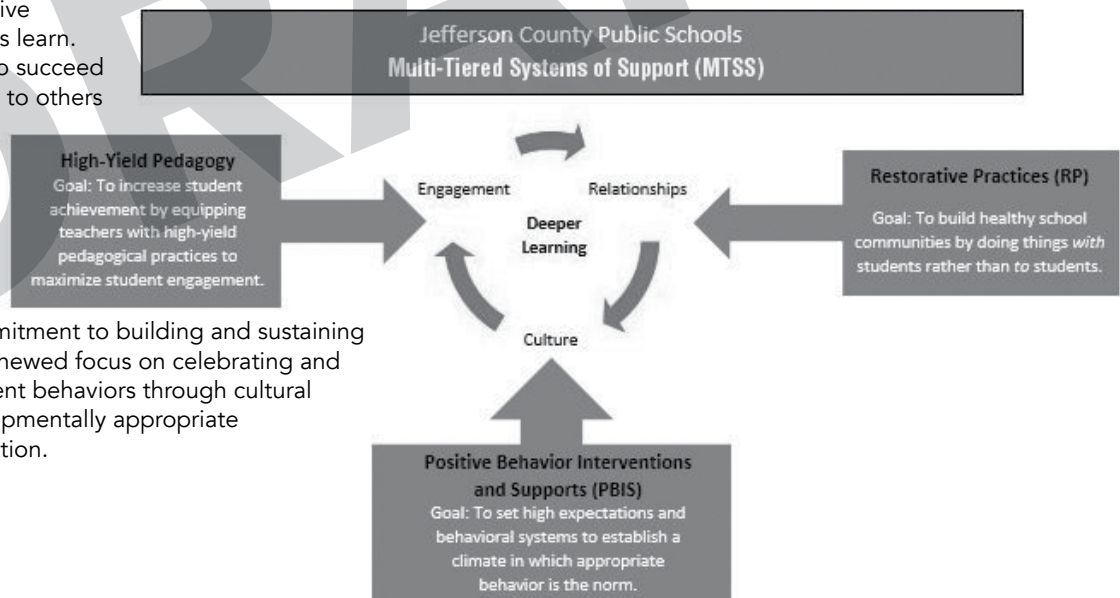
Focus Area 2: Increasing Engagement

Increasing student engagement means personalizing learning (Deeper Learning, Vision 2020 strategy 1.1.2). To personalize learning, teachers use many research-based practices that increase engagement. These strategies include frequent opportunities to respond, modeling, guided and authentic practice, consistent routines, teacher-facilitated instruction, and positive feedback. Teachers also use culturally responsive teaching and differentiated instruction to increase student engagement. Teachers work in Professional Learning Communities (PLCs) to analyze data, which aids them in designing their instruction. Research shows that students who are more engaged in their learning are more likely to demonstrate positive behaviors. Knowing that behavior and academics go hand in hand, JCPS provides teachers with opportunities throughout the year to improve their understanding of these practices.

Focus Area 3: Fostering Relationships

Research shows that positive relationships help students learn. Students are more likely to succeed when they feel connected to others in their school and classroom community and are less likely to behave in ways that disrupt the school environment.

As a result of JCPS’s commitment to building and sustaining relationships, there is a renewed focus on celebrating and recognizing positive student behaviors through cultural competence, age-/developmentally appropriate supports, and communication.



SCHOOL ATTENDANCE

All students are required by law to attend school every day and to be on time for school and all classes. Tardiness is not just being late for school as traditionally interpreted; it is defined by law as “any amount of instructional time missed.” This includes being late to school or leaving school before classes are dismissed. Students are required to sign in on an Entry Log if they are late to school or to sign out of school on an Exit Log if they leave the building during any part of the instructional day.

What is Chronic Absenteeism?

Did you know that last year nearly one out of four children in JCPS were chronically absent, meaning they missed 10% or more of instructional time? Why is reducing chronic absence so important?

- Students suffer academically if they miss 10 percent or more of school days.
- Studies show that children who miss too many days in kindergarten and 1st grade often have trouble mastering reading by the end of 3rd grade. Attending school regularly helps children feel better about school and themselves.
- When children are absent, schools get fewer resources from the state, resulting in less funding to pay for teachers and instructional materials. Chronic absence in kindergarten predicts chronic absence the following year, so even the attendance patterns of our youngest students affect future funding.

What is Chronic Absenteeism? The Kentucky Department of Education defines chronic absenteeism as any student who misses ten (10) percent or more of his/her enrolled days during the academic year. Chronic absenteeism differs from truancy (only addresses unexcused absences) in that it includes missing school days for any reason - excused absences, unexcused absences, and suspended days.

What Can Be Causes of Absenteeism?

- Barriers: illness and lack of health, vision and dental care; unsafe path to school; poor transportation; involvement with child welfare or juvenile justice; trauma
- Negative School Experiences: struggling academically or socially; bullying; lack of appropriate accommodations for disability; suspensions; negative attitude of parents due to their own school experience; incidences that trigger a traumatic experience.
- Lack of Engagement: lack of culturally relevant, engaging curriculum; no meaningful relationships with adults in school; stronger ties with peers outside of school; unwelcoming school climate; failure to earn credits/no future plans; unidentified disabilities.
- Misconceptions: Absences are only a problem if they are unexcused; missing two days per month doesn't affect learning; sporadic absences are not a problem; attendance only matters in older grades

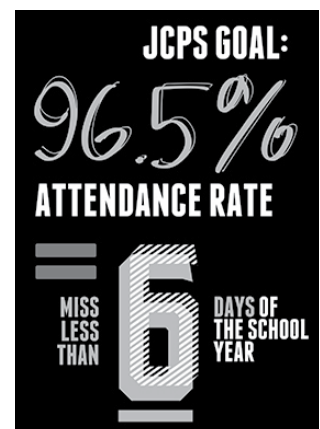
How Can Staff Support Student Attendance at My School?

- Know Your Data: Track students who miss school for any reason. Early identification of at-risk students and trends in absenteeism will help with home communications and specific interventions. Take advantage of existing tools (e.g. Persistence to Graduation Tool) to assist you with monitoring your students.
- Communicate with Home: Write or call families/caregivers as early as possible with student attendance data to raise awareness. Help with action plans to overcome barriers.
- Identify Root Causes: Assess prevalent reasons for absences. Create positive home and community partnerships to build support systems (health, transportation, school climate, etc.)

What Can Parents & Guardians Do to Support Attendance?

- Set a regular bedtime and morning routine
- Lay out clothes and pack backpacks the night before.
- Don't let your child stay home unless they are truly sick. Keep in mind complaints of a stomach ache or headache can be a sign of anxiety and not a reason to stay home.
- If your child seems anxious about going to school, talk to teachers, school counselors, or other parents for advice on how to make your child feel comfortable and excited about learning.
- Develop back-up plans for getting to school if something comes up. Call on a family member, a neighbor, or another parent.
- Avoid medical appointments and extended trips when school is in session.

During the 2019-2020 academic year, JCPS launched the **#EVERYDAYCOUNTS** initiative to empower parents, students, and the general public with information about the importance of consistent school attendance. JCPS stands behind a district wide goal for all students of “No More Than 6”. Learn more at www.everydaycounts.com.



JCPS PREVENTION AND SUPPORT SERVICES

Students' safety and well-being are of utmost importance to all JCPS staff members. The current major public health concerns for children and youth concerning substance use, mental illness, bullying, and suicide are of high concern for the district as well. Currently, JCPS has several preventative and intervening measures in place to address bullying, suicide, addiction, and mental health needs. We are increasing our capacity by providing a mental health professional in every school starting the 2019-2020 school year.

Students at an increased risk of substance abuse or suicide-related behavior may also be dealing with a multitude of social and personal factors. Certain populations, including adolescents, LGBTQIA populations, as well as some racial and ethnic minorities are at an increased risk for bullying and social isolation. Everyone should be familiar with warning signs of self-harm or distress and intervene immediately. Some warning signs include:

Talking about wanting to die * Looking for ways to hurt oneself * Feelings of hopelessness or having no reason to live * Talking about being a burden to others * Talking about feeling trapped or in unbearable pain * Acting anxious or behaving recklessly * Sleeping too little or too much * Withdrawing or feeling isolated * Extreme mood swings * Increasing use of alcohol or drugs * Giving away prized possessions

If you recognize these warning signs, it is recommended that you seek help immediately by calling your child's physician or school counselor. If you are a student and worried about a peer, talk to a trusted adult immediately about your concerns. In the event of an emergency, please call 9-1-1 or go to the nearest emergency room.

Parents, caregivers, and family members are a vital part of any young person's life and are an important support for the young person who may be facing difficulty in life. Other proactive factors that assist with decreasing a student's risk for self-harming or destructive behaviors include; strong peer and community connections; early detection and treatment of mental illness and/or substance use; and access to evidence-based mental health and substance use prevention and treatment services. Specific resources, training, and district supports related to bullying prevention, suicide prevention, and addiction are provided below. Families, students, and JCPS staff are encouraged to access these resources at the first sign of concern. Again, student mental health and well-being is paramount to their success and a priority of JCPS.

A L G E E	Access for risk of suicide or harm
	Listen non-judgmentally
	Give reassurance and information
	Encourage appropriate professional help
	Encourage self-help and other support strategies

BULLYING PREVENTION AND SUPPORT

All JCPS students deserve a bullying free, safe and thriving environment, to learn and grow. We are committed to ensuring that staff and students have the resources they need to prevent, report, and/or respond to any concerns of bullying.

Pursuant to KRS 158.148, Bullying is defined as:

(1) (a) As used in this section, "bullying" means any unwanted verbal, physical, or social behavior among students that involves a real or perceived power imbalance and is repeated or has the potential to be repeated:

1. That occurs on school premises, on school-sponsored transportation, or at a school-sponsored event; or
2. That disrupts the education process.

(b) This definition shall not be interpreted to prohibit civil exchange of opinions or debate or cultural practices protected under the state or federal Constitution where the opinion expressed does not otherwise materially or substantially disrupt the education process.

Cyberbullying is bullying that takes place using electronic technology.

Bullying Reporting Procedures

JCPS takes all bullying allegations very seriously. As a result, we have numerous ways that students and parents/guardians can report potential bullying incidents. Concerned parents/guardians, peers, or staff have the following reporting options:

- 1) Report incidents to their school administrator.
- 2) Call 1-888-393-6780 to access the JCPS Bullying Tip-line
- 3) Can access our online reporting systems by visiting the JCPS website, www.jefferson.kyschools.us, click on the "Bullying" icon (at the top of the page) or the "Report Bullying" square. When reporting an incident, individuals may identify themselves or remain anonymous, according to their preference. Upon receiving a Tipline report, both district and school administrators are made aware of the report so that the school can begin the investigative process.

All bullying incidents, whether reported via the Tip-line or through a school administrator, are investigated, resolved, and documented at the school level in alignment with district protocol.

OLWEUS Bullying Prevention Program (OBPP)

Jefferson County Public Schools is expanding the OLWEUS Bullying Prevention Program districtwide. The OBPP is a comprehensive, school-wide program that involves the entire school community in the form of school-wide interventions, classroom activities, and individual interventions. To reduce bullying, it is important to change the climate of the school and the social norms with regard to bullying. It must become normative for staff and students to notice and respond when a child is bullied or left out. The Olweus Bullying Prevention Coordinating Committee (BPCC) is a representative group from the school. Our goal is to train all BPCCs for implementation at all schools during the 19-20 school year. The BPCC undergoes a comprehensive, highly organized two-day training by a Certified Olweus Trainer-Consultant. This team then meets at least once monthly to plan bullying prevention activities, train and motivate staff, students, and parents, and ensure that efforts are focused and ongoing.

SBDM School Bullying Policy

Each SBDM Council is required to establish a Bullying Prevention Policy. The policy is reviewed annually to communicate/remind stakeholders of expectations, processes,

and procedures, determine if there are any adjustments to be made, and ensure there are safe and user-friendly ways for stakeholders to report concerns at the school level. In addition, schools will ensure stakeholders are aware of the district online resources regarding bullying reporting and support resources.

Other District Programs/Resources Offered

Sandy Hook Promise (SHP) General Information: The following programs are violence/bullying prevention programs that were created to reduce social isolation and create connectedness in classrooms and schools. In order to receive training materials, resources, suggested activities, and newsletters each school will need to sign up on the SHP website to access materials using the following link: www.sandyhookpromise.org (Scroll down to Prevention Programs and link to specific self-lead curriculum.). Though this program is tailored for students in grades K-12, the recommendation is to utilize it with students in grades 4-12.

- **Start with Hello Program (Grades 4-5):** www.sandyhookpromise.org/bringstartwithhello
- **Say Something Program (Grades 6-12):** www.sandyhookpromise.org/bringsaysomething
- **SAVE Promise Club (Grades 6-12):** www.sandyhookpromise.org/savepromiseclub

Additional resources are provided at: <https://www.jefferson.kyschools.us/student-support/bullying>

SUICIDE PREVENTION AND SUPPORT

In JCPS we strive to support student mental health needs. In JCPS, we use the following four research-based suicide prevention trainings for students and staff: Signs of Suicide, More Than Sad, Lifelines and Leads. Last year, we used a combination of the programs listed to create a more interactive and engaging lesson for students and staff. Suicide prevention training resources may be found here: <https://education.ky.gov/school/sdfs/Pages/Suicide-Prevention-and-Awareness.aspx> An online version of the parent training is available on the JCPS YouTube site and can be accessed by going to the following link: <https://www.youtube.com/watch?v=fYKq2Yd3MSY&feature=youtu.be> If students, teachers or parents are concerned about the mental health of a student, or themselves, they are encouraged to reach out to their school counselor or local mental health professional. In an emergency situation, please call 9-1-1 or go to the nearest emergency room for assistance.

In 2018, House Bill (HB) 30 was enacted requiring all public middle and high school principals, teachers and counselors to receive at least one hour of high quality professional development training on suicide prevention every other year. <https://apps.legislature.ky.gov/law/acts/18RS/>

documents/0053.pdf. JCPS trains all teachers and administrators every year at every level on suicide prevention. Additionally, in 2018 HB 51 also amending KRS 156.095, requiring public middle and high school students to receive suicide prevention training by September 15th of each school year. <https://apps.legislature.ky.gov/law/statutes/statute.aspx?id=47658>.

Resources and Community Partners:

- The Brook: 502-426-6380
- Our Lady of Peace: 502-451-3333
- Centerstone: 502-589-8070
- Wellstone: 812-284-8000
- National Suicide Prevention Hotline: 1-800-273-8255
- National Crisis Text Line: Text CONNECT to 741741
- American Foundation for Suicide Prevention: <https://afsp.org/>
- Ask a Nurse: Suicide Prevention Video: <https://www.youtube.com/watch?v=4iY9ZLkaOt0&feature=youtu.be>

ADDICTION PREVENTION AND SUPPORT

JCPS seeks to ensure the safety of all students by ensuring supports are in place for students who use alcohol, tobacco, e-Cigarettes, and other drugs. Students bringing or using alcohol, tobacco, or other drugs will face consequences outlined in the Student Support and Behavior Intervention Handbook. However, it is imperative students also receive preventative information and appropriate resources related to the use or abuse of these controlled substances. Additional supports and information can also be found at the following sites:

Resources and Community Partners:

Centerstone

(502) 589-8070 (formerly Seven Counties Services)
914 E. Broadway, 3rd Floor, 40204 / has a range of substance services, including:

- Early Intervention: brief assessment, youth and parent education and support sessions, assistance in referring to other needed community resources, case management & follow-up.
- Adolescent Intensive Outpatient Program (IOP): meets for three hours, three times a week and is designed to treat youth who have been using alcohol and/or drugs.
- Acute Child Psychiatric Services: Intensive outpatient treatment, Ages 3-18.
- Family Recovery Program (FRP): in-home therapy services.
- Children's Crisis Stabilization Unit (CSU): Ages 3-18.

The Brook (502) 426-6380,
8521 LaGrange Rd, 40242

- STAR Program: Adolescent (age 13-18) on-site, inpatient 8-week rehab.
 - Intensive outpatient treatment (IOP) / 20 sessions.
- The Brook utilizes Seven Challenges model of recovery in all levels of care.
Free level of care assessments are available 24/7.
Accepts commercial insurances and all Medicaid MCO's.

Our Lady of Peace (502) 451-3333
2020 Newburg Rd 40205

- Acute Inpatient (Psychiatric and Substance Use disorders)
- Crossroads – Partial Hospitalization – Mon – Fri intensive day treatment

OLOP utilizes Seven Challenges Model of recovery in all levels of care.

Free level of care assessments are available 24/7.

Accepts commercial insurances and Medicaid MCO's.

The Morton Center (502) 456-1025

1028 Barrett Ave, 40204 www.themortoncenter.org

- Adolescent Early Recovery Program (Includes Intensive Outpatient Program):
- Intensive treatment is accompanied by group, expressive, family and individual therapy, as well as education, with decreasing intensity.
- Family participation in this program is strongly recommended.
- Billable through most insurance plans.

Bradford Group / Innerview (502) 491-3799

4229 Bardstown Rd, #311, Louisville, KY 40218

- Accepts all major medical insurance plans (private)
- Medicaid only covers detox
- Serves adolescents ages 13 and up

Maryhurst

(502) 438-9639

1015 Dorsey Ln, 40223

3201 Portland Ave. 40212

<https://www.maryhurst.org/services/youth-family-counseling>
Outpatient counseling for adolescents and families.

Haven Family Services - Ellie Bruner, Program Supervisor:

(502) 523-7565

<https://www.boysandgirlshaven.org/program-overview/haven-family-services/>

- Outpatient substance abuse treatment for children & adolescents, up to age 21
- Office-based, home-based or school-based services

Parent Support / Drug-Free Kids Parent Hotline: (855)

DRUGFREE / (855) 378-4373

<http://drugfree.org>

Get one-on-one help to address your child's substance use.
"We have trained and caring master's-level specialists ready to listen, help you find answers and make an action plan to help your loved one. Support is available in English and Spanish."

12-Step Support Groups

Alcoholics Anonymous (AA): 582-1849

www.louisvilleaa.org

NA Narcotics Anonymous (NA): 499-4423

www.nalouisville.org

Al-Anon and Alateen): 458-1234

www.kyal-anon.org

Casey's Law / Involuntary treatment for substance use / addictions: <http://caseyslaw.org>

RIGHTS AND RESPONSIBILITIES OF ENTIRE JCPS COMMUNITY

Supporting positive student behavior requires a high level of commitment from students, parents/guardians, staff, administrators, and members of the JCBE. These stakeholder groups have rights and responsibilities that are designed to reflect both the mutual respect and accountability required of all people involved in supporting student behavior. The rights and responsibilities for each group are outlined in this section

Student Rights and Responsibilities	Parent/Guardian Rights and Responsibilities
<p>All students have the right to:</p> <ul style="list-style-type: none"> • Be treated with courtesy, respect, and dignity. • Attend school and be valued members of the school community. • Learn in a safe environment that is free of bullying, harassment, and discrimination. • Receive instruction in order to learn school behavior expectations and social and emotional skills. • Access appropriate supports and services to succeed in school. • Receive a written copy and clear explanation of the <i>Student Support and Behavior Intervention Handbook</i>, including the process to appeal disciplinary decisions. • Tell their side of the story and/or report unfair treatment to a person in authority. • Participate in decision making to determine which interventions and consequences will be used in response to disciplinary issues. • Maintain personal privacy. Personal belongings may be searched only if the principal has a reasonable suspicion that the student possesses evidence of a crime, stolen goods, drugs, weapons, or other illegal or prohibited items (JCBE policy). • Have a parent/guardian or advocate present at conferences on readmission from out-of-school suspension. 	<p>All parents/guardians have the right to:</p> <ul style="list-style-type: none"> • Be treated with courtesy, respect, and dignity. • Feel welcomed, valued, and connected to school staff and the school community. • Access opportunities to learn school behavior expectations. • Receive a written copy and clear explanation of the <i>Student Support and Behavior Intervention Handbook</i>, including the process to appeal disciplinary decisions. • Work in partnership with school staff to support their child's learning and healthy development at home and at school. • Engage in regular, two-way, meaningful communication with school staff regarding their child's academic and behavioral progress. This includes the right to be notified in a timely manner when their child is removed from the instructional environment for a substantial amount of time due to his or her behavior. • Monitor student academic progress (e.g., through Parent Portal). • Actively participate with school staff in solving problems related to the child's behavior. • Advocate for their child and report any unfair treatment to a person in authority.
<p>All students have the responsibility to:</p> <ul style="list-style-type: none"> • Show respect and courtesy to all students, staff, families, and school visitors. This includes respecting individual differences, cultural diversity, and the property of others. • Attend school daily, be prepared for class, engage in classroom activities, and complete all assignments. • Contribute to a safe learning environment by managing their own behavior and reporting harmful or dangerous situations to an adult. • Understand and follow all school rules and instructions given by school staff. • Bring to school only those materials that are allowed. • Inform parents/guardians of school-related issues and give them any materials sent home by the school or district. 	<p>All parents/guardians have the responsibility to:</p> <ul style="list-style-type: none"> • Show respect and courtesy to all students, staff, families, and school visitors. This includes respecting individual differences, cultural diversity, and the property of others. • Provide a working phone number in order for schools to effectively communicate with families. • Review the content of the <i>Student Support and Behavior Intervention Handbook</i> with their child. • Understand the school's behavior expectations. • Work with the school as a collaborative partner. This includes working with staff to maximize their child's strengths and to support the child to make changes in his or her behavior as needed. • Inform school officials about concerns in a timely and respectful manner. • Support their child to resolve problems peacefully while at school in order to contribute to a safe and positive school climate. This includes helping the child express anger without verbal attacks or physical violence.

Teacher/Staff Rights and Responsibilities

All teachers/staff have the right to:

- Be treated with courtesy, respect, and dignity.
- Work in a safe environment that maximizes staff performance and student learning.
- Access opportunities for professional development and training to assist in creating and maintaining a thriving classroom environment that is respectful, engaging, vibrant, and culturally relevant.
- Access support for addressing student behavior when such conduct cannot be handled within the classroom environment.

All teachers/staff have the responsibility to:

- Show respect and courtesy to all students, staff, families, and school visitors. This includes respecting individual differences, cultural diversity, and the property of others.
- Foster ongoing, positive relationships with all students and families.
- Welcome families to be engaged in the learning process both in the classroom and at home.
- Create a positive classroom and school climate for all students, using effective classroom management strategies that extend to all school environments.
- Explicitly teach, acknowledge, and reinforce behavior expectations.
- Employ an MTSS.
- Provide social and emotional skill instruction that meets the district's MTSS.
- Intervene promptly when inappropriate behavior occurs. This includes providing corrective feedback, reteaching behavioral expectations, following the Individual Education Programs (IEPs) and Behavior Support Plans of students, and adhering to procedures for student removals from the learning environment when needed.
- Work with students and their parents/guardians to develop, implement, and monitor behavior interventions that support students in changing their behavior, using a progressive system of support.
- Apply the *Student Support and Behavior Intervention Handbook* in a fair, equitable, and consistent manner and accurately record inappropriate student behavior following the established protocol.
- Respect the right of students to maintain personal privacy. Personal belongings may be searched only if the principal has a reasonable suspicion that the student possesses evidence of a crime, stolen goods, drugs, weapons, or other illegal or prohibited items (JCBE policy).
- Follow up promptly on reports of bullying as required by JCBE policy.

School Administrator Rights and Responsibilities

All school administrators have the right to:

- Be treated with courtesy, respect, and dignity.
- Work in a safe environment that maximizes staff performance and student learning.
- Access support from district central office to create and maintain a thriving school environment that is respectful, engaging, vibrant, and culturally relevant.

All school administrators have the responsibility to:

- Show respect and courtesy to all students, staff, families, and school visitors. This includes respecting individual differences, cultural diversity, and the property of others.
- Foster ongoing, positive relationships with all students and families.
- Create a safe and caring school climate that maximizes learning.
- Welcome families to be engaged in the learning process both in the classroom and at home.
- Create, monitor, and assess a schoolwide management system.
- Welcome parents/guardians as valued partners in their child's learning. This includes creating opportunities for regular, two-way communication and active participation at problem-solving meetings by accommodating schedules and meeting language needs.
- Review the Student Support and Behavior Intervention Handbook with students, staff, and parents at the beginning of each school year and revisit it as necessary throughout the year.
- Guide the School-Based Leadership Team and Student Support and Intervention Team in using and reviewing schoolwide behavior data and evaluating the effectiveness of behavioral interventions. This includes monitoring data to identify and address disparities.
- Ensure that all school staff meet the expectations outlined in the section entitled "Teacher/Staff Rights and Responsibilities."
- Support staff in implementing appropriate behavior interventions.
- Apply the Student Support and Behavior Intervention Handbook in a fair, equitable, and consistent manner and accurately record inappropriate student behavior and interventions and disciplinary responses following the established protocol.
- Follow procedures for student removals from the learning environment.
- Notify parents immediately if a student's inappropriate behavior results in an out-of-school suspension.
- Notify parents, in a timely manner, of an inappropriate behavior and the response, if there is not an out-of-school suspension.
- Respect the right of students to maintain personal privacy. Personal belongings may be searched only if the principal has a reasonable suspicion that the student possesses evidence of a crime, stolen goods, drugs, weapons, or other illegal or prohibited items (JCBE policy).
- Respond promptly on reports of bullying as required by JCBE policy.
- Ensure that accurate and complete data-entry procedures are being followed and ensure that collection, monitoring, and evaluation systems are utilized at the school level. This includes using disaggregated data to allocate resources to support student behavior as well as evaluating program and staff effectiveness.

Central Office Rights and Responsibilities

All central office staff have the right to:

- Be treated with courtesy, respect, and dignity.
- Work in a safe environment that maximizes staff performance.

All central office staff have the responsibility to:

- Show respect and courtesy to all students, staff, families, and school/district visitors. This includes respecting individual differences, cultural diversity, and the property of others.
- Provide schools with the necessary resources, professional development, and technical assistance to implement the *Student Support and Behavior Intervention Handbook*.
- Communicate to all district staff that creating a positive school culture, supporting positive student behavior, and developing appropriate student discipline practices are critical district priorities.
- Ensure that accurate data collection, monitoring, and evaluation systems are available and utilized at the school and district levels. This includes using disaggregated data to allocate resources to support student behavior as well as evaluating program and staff effectiveness.
- Create a safe and caring climate for all district stakeholders.
- Engage in ongoing monitoring of the implementation of the *Student Support and Behavior Intervention Handbook* and intervene as needed to ensure that it is enforced in a fair and equitable manner.

Board of Education Rights and Responsibilities

All Board of Education members have the right to:

- Be treated with courtesy, respect, and dignity.

All Board of Education members have the responsibility to:

- Show respect and courtesy to all students, staff, families, and school visitors. This includes respecting individual differences, cultural diversity, and the property of others.
- Use qualitative and quantitative data to evaluate, approve, or reject policies that promote thriving school environments that are respectful, engaging, vibrant, and culturally relevant.
- Ensure that district administrators utilize appropriate data collection, monitoring, and evaluation systems.
- Receive regular data reports.
- Expect schools to develop and implement research-based, data-driven plans to reduce lost learning time and disproportionality in discipline.

Protections for Students with a Disability

Nothing in this handbook replaces or substitutes any student rights as guaranteed by the Individuals with Disabilities Education Act (IDEA) or state law. Students with a disability will always be entitled to the rights and protections afforded to them by state and federal law and shall not be removed from the learning environment unless doing so is in accordance with the law

KENTUCKY ADMINISTRATIVE REGULATIONS FOR SPECIAL EDUCATION PROGRAMS

JCPS is committed to providing all students with a fair and equitable application of behavior support systems. For information regarding students with disabilities, including students in the referral process, please refer to 707 KAR 1:002 – 707 KAR 1:380 regulations.

707 KAR 1:002 – 707 KAR 1:380

Free Appropriate Public Education. (1) AN LEA shall make a free appropriate public education (FAPE) available to all children with disabilities aged three (3) to twenty-one (21) residing within its district's boundaries who have not received a high school diploma, including children with disabilities who have been suspended or expelled for more than ten (10) school days in a school year. FAPE shall be provided to each child with a disability even though the child has not failed or been retained in a course and is advancing from grade to grade based on the child's unique needs and not on the child's disability. An LEA shall not be required to provide FAPE to a student eighteen (18) years old or older, who is placed in an adult correctional facility if, in the educational placement prior to placement in the correctional facility, the student was not identified as a child with a disability and did not have an IEP.

- [707 KAR 1:270 Kentucky special education mentor program](#)
- 707 KAR 1:002 Definitions
- 707 KAR 1:290 Free appropriate public education
- 707 KAR 1:300 Child find, evaluation, and reevaluation
- 707 KAR 1:310 Determination of eligibility
- 707 KAR 1:320 Individual Education Program
- 707 KAR 1:340 Procedural safeguards / complaints
- 707 KAR 1:350 Placement decisions
- 707 KAR 1:360 Confidentiality of information
- 707 KAR 1:370 Children with disabilities in private schools
- 707 KAR 1:380 Monitoring and recovery of funds
- Index

Parents/guardians may also request a copy of the above information by contacting their school's administration or the Chief of Exceptional Childhood Education at; Vanhoose Educational Center, 3332 Newburg Road, Louisville, KY 40218. (502) 485-3890

EVIDENCE BASED BEST PRACTICES TO SUPPORT STUDENT BEHAVIOR

JCPS's Multi-Tiered Systems of Support (MTSS) plan, including our tiered intervention structures for academic and behavior support, can be found in our MTSS Manual at www.jefferson.kyschools.us/departments/academic-services-division/school-climate-culture/multi-tiered-systems-support/mtss

Classroom and Teacher-based Supports

Proactive systems of supports assist all students in achieving social, emotional, and academic success. Proactive supports provide clear, consistent expectations so that every student knows exactly what is expected across school settings. When a student demonstrates an irresponsible behavior, a teacher determines a reason for the misbehavior and takes action to reduce and eliminate the behavior. Teachers modify conditions that perpetuate the misbehavior, eliminate punitive consequences, and implement restorative responses, thus promoting a safe and respectful learning environment.

Proactive Supports

- Create positive classroom expectations that are clearly defined and taught.
- Teach and reteach classroom expectations throughout the year (i.e. routines, transitions, procedures, especially after breaks).
- Include students in setting classroom norms.
- Model and practice expectations in the appropriate setting (e.g., group work, individual work).
- Use pre-correction strategies to remind students of expectations before the next task.
- Utilize more positive than corrective interactions (at a ratio of 4:1) between staff and students, students and students, and staff and staff.
- Use fluent and consistent corrections for early-stage misbehavior (e.g., CHAMPS, Teacher Encyclopedia). [https://spportal.jefferson.kyschools.us/departments/academic-services/srt/rtd/Navigation/Home\(1\).aspx](https://spportal.jefferson.kyschools.us/departments/academic-services/srt/rtd/Navigation/Home(1).aspx)
- Create classroom acknowledgment systems to increase responsible student behavior.
- Maintain positive expectations for all students, in all settings, at all times.
- Provide opportunities for students to actively engage in their learning.
- Provide immediate positive feedback when student meet or exceed expectations.
- Build positive relationships with students and families (e.g., use Restorative Practices circles).
- Communicate and collaborate with the student's parent or guardian.
- Teach prevention lessons (e.g., social and emotional learning, bullying prevention, suicide prevention, and trauma-informed practices).
- Frame the lesson by giving students the learning targets and success criteria. <https://www.jefferson.kyschools.us/departments/academic-services-division/school-climate-and-culture/mtss-toolkit-1-teacher-clarity>
- Gauge their impact on student learning through timely feedback. <https://www.jefferson.kyschools.us/departments/academic-services-division/school-climate-and-culture/mtss-toolkit-2-feedback>
- Engage in ongoing formative assessments. <https://www.jefferson.kyschools.us/departments/academic-services-division/school-climate-and-culture/mtss-toolkit-3-formative-assessment>
- Engage in a variety of modes of instruction and cooperative groups that support student learning. <https://www.jefferson.kyschools.us/departments/academic-services-division/school-climate-and-culture/mtss-toolkit-4-modes-instruction-student-practice>
- Allow students to be guides in their own learning through goal-setting and self-assessment. <https://www.jefferson.kyschools.us/departments/academic-services-division/school-climate-and-culture/mtss-toolkit-5-self-assessment-reflection>
- Set up classroom systems that support student engagement and increase positive behavior.
- Engage in self-assessment of classroom practices to determine next steps. <https://www.jefferson.kyschools.us/sites/default/files/Classroom%20Systems%20Teacher%20Self-Assessment%20Rating%20Scale.pdf> AND <https://www.jefferson.kyschools.us/sites/default/files/Classroom%20Systems%20Teacher%20Self-Assessment%20Reflection.pdf>
- Frequently provide individual and groups of students opportunities to respond to content.

Addressing Student Misbehavior

- Determine appropriate intervention for the behavior. [https://portal.jefferson.kyschools.us/departments/academicservices/srt/rti/Navigation/Home\(1\).aspx](https://portal.jefferson.kyschools.us/departments/academicservices/srt/rti/Navigation/Home(1).aspx)
- Communicate and collaborate with the student's parent or guardian.
- Provide lessons to teach or reteach students how to behave responsibly.
- Change student seating.
- Pace the lesson more quickly to promote on-task behavior.
- Respond calmly, restating the desired behavior.
- Restructure classroom practices based on student needs (e.g., structures recess, structured lunch, visual schedules).
- Use progress-monitoring tools in the classroom (e.g., on-task monitoring form, replacement behavior worksheet, ratio of interactions tracking form, reflection sheets, behavior contracts, student point sheets).
- Establish and consistently implement corrective responses for rule violations (e.g., student loses time for valued activity, in-class time-out, time-out in another class, restitution given for property damage, restitution given for relationship damage, positive practice, loss of points of privileges).
- Use restorative affective statements and affective questions. <https://www.jefferson.kyschools.us/restorative-practice>
- Engage in student-teacher impromptu conferencing with active listening.
- De-escalation techniques taught and modeled.
- Continuously assess, seek feedback on, and develop management skills for teachers' own behaviors and biases.

School-wide Supports

School-wide interventions aim to engage the student's support system to ensure successful learning. The strategies and interventions should be applied consistently to change the conditions that contribute to the student's inappropriate or disruptive behavior. Support staff, both school-based and within the broader community, should not only model expectations, but be involved in supporting positive school behavior. Staff will use these responses in a graduated fashion.

Proactive Supports

- Create positive school-wide expectations that are clearly defined and taught.
- Continuously teach and reteach school-wide expectations throughout the year (e.g., schedule for teaching by week/month, after breaks).
- Model and practice expectations in appropriate settings (e.g., cafeteria, hallways, bus, restroom).
- Establish a school-wide acknowledgment system with opportunities for individual and school-wide recognition.
- Effectively and actively supervise in common areas (e.g., all staff in hallways during transitions, hallway sweeps).
- Increase supervision in non-classroom settings.
- Refer to before and after school programs for additional support.
- Employ targeted strategies for groups of students (e.g., mentoring programs, bullying-prevention lessons for selected students, suicide drop-in centers).
- Design social and emotional skills instruction groups (e.g., conflict management, anger management, aggression replacement, empathy building, resilience building, organization skills).
- Use universal screeners and assessments to proactively identify students in need of targeted and intensive interventions and supports.
- Establish an individual student support, response, or problem-solving team.
- Establish in-school conflict-resolution programs (e.g., community conferencing, peer mediation).
- Restorative Practice strategies (e.g., affective statements and questions, conflict resolution, responsive circles)
- Utilize parent engagement strategies (e.g., newsletters, family nights, celebrations).

Addressing Student Misbehavior

- Communicate and collaborate with the parent or guardian.
- Design support and advisory groups that engage parents, students, and the community.
- Use responsive interventions and appropriate referrals (e.g., JCPS Crisis Response Team, Louisville Linked, Centerstone, school-based services, referrals to Family Resource and Youth Services Centers [FRYSCs], social services).
- Refer to school-based health or mental-health clinic.
- Mental-health evaluation referral (e.g., mobile assessments, counseling services).
- Alcohol/drug evaluation referral (e.g., Substance Abuse Intensive Outpatient Program [IOP]).
- Threat assessment evaluation referral.
- Refer to community organizations, including conferencing and community mediation when students have issues with other students or school staff.
- Community service
- Restorative Practice strategies
- Use individual student planning tools (e.g., Behavior Support Plan, Behavior Function Identification worksheet, Behavior Collection form).

Bus and Transportation Support

These interventions often involve support staff, administrators, and bus drivers working collaboratively to improve both student support and increase overall safety during transport.

Proactive Supports

- Create positive bus behavior expectations that are clearly displayed and modeled for students
- Greet students each day
- Continuously revisit and review bus behavior expectations throughout the year
- Maintain positive expectations for all students, at all times
- Build positive relationships with students and their families
- Inform students that they have important responsibilities in ensuring group safety
- Give instructions in a positive manner
- Set a good example by following rules yourself, obey traffic laws, be punctual, keep a clean bus, and be courteous
- Foster a positive experience for all students riding the bus
- Positively recognize students who display appropriate behavior on the bus
- Connect with the students on the bus by addressing the students by name and engaging in more positive than corrective interactions
- Temporarily or permanently assign seats for all students on the bus

Addressing Student Misbehavior

- Get to know students as individuals so behaviors can be anticipated
- Assign seats for all students on the bus
- Discuss student(s) behaviors with Parent/Guardian
- Review bus behavior expectations with students
- Temporarily move student(s) to or from a seat at time of behavior
- Respond calmly, restating desired behavior
- Communication and collaboration with school administration
- Look for non-verbal clues, listen for verbal clues that might indicate potential misbehavior
- Support student bus behavior plans and other interventions developed with support staff

PROGRESSIVE DISCIPLINE

Progressive Intervention and Discipline—Effective disciplinary responses refrain from interrupting a student's education to the greatest extent possible. The goal of restorative interventions and discipline is changing, not simply managing, behavior. Every reasonable effort should be made to correct inappropriate student behavior using logical consequences, restorative responses, examined through a mental health and trauma lens. Inappropriate behavior may be symptomatic of underlying problems that students are experiencing, like trauma or academic challenges. It is critical that all staff be sensitive to issues that may influence student behavior and respond in ways that are most supportive of student needs. This may require the involvement of school counselors, outside support agencies, or mental health practitioners.

The interventions and disciplinary responses described here should be carefully matched to the needs of the student and the overall context of the situation. Significant disciplinary

action, such as out-of-school suspension, is used for the most serious situations. When an exclusionary disciplinary response is used (e.g., in-school suspension, out-of-school suspension), it should be paired with one or more interventions (e.g., referral to staff, parent conference, mediation). Consequences that are paired with meaningful and developmentally appropriate instruction and guidance offer students the space to make mistakes, learn from them, and receive support to change their behavior over time. When a specific student behavior does not change using the lowest identified level of intervention and/or discipline—or the behavior increases in frequency, intensity, or duration—the next level of intervention/disciplinary response is used. The progressive approach to intervention and discipline can apply to some Level 4 offenses. However, the safety of students and staff will always be an important consideration. Additionally, as in any school-related setting, incidents occurring on the bus that compromise the safety of students and staff may result in a faster progression of consequences.

All interventions and disciplinary responses should be selected, implemented, and assessed to help students do the following regardless of setting:

Understand why the behavior is unacceptable and the harm it has caused

Take responsibility for their actions

Understand what they could have done differently in the same situation

Learn social strategies and skills to use in the future

Understand the progression of more serious consequences if the behavior reoccurs

Take measures to repair the harm the behavior may have caused to themselves and others

If a Level 1 or Level 2 corrective strategy is used to address the same behavior more than three times, an administrator may use his or her professional judgment and move to a Level 3 response, resulting in a possible short-term suspension of one to three days. The parent/ guardian should be made aware of the repeated behaviors and partner with the school on a plan to successfully address the behavior and transition back into the school setting.

In alignment with progressive discipline, administrators are provided a graduated list of resolutions that can be used to support student misbehavior. In JCPS, these resolutions are tiered to reflect a range of possible responses reflective of the range of identified behaviors in our schools. For our K-12 students, tiered responses begin at a Level 1 and end at a Level 4.

Due to age appropriateness, Early Childhood Level resolutions begin at a Level 1 and end at a Level 3. Responses increase in seriousness as administrators progress from Level

1, Level 2, Level 3, and/or Level 4. Both Early Childhood and K-12 leveled responses are outlined below.

The Admissions and Release Committee (ARC) may convene to review the Individual Education Program (IEP) for students with disabilities to address behaviors with positive behavior supports. The discipline of students with disabilities is subject to the requirements of state and federal law in addition to the Student Support and Behavior Intervention Handbook. To the extent any conflict exists, state and federal law will prevail.

DISCIPLINE PROCEDURES FOR EARLY CHILDHOOD AND PRESCHOOL STUDENTS

Early Childhood and Preschool Students

School staff members shall ensure that all disciplinary procedures and consequences meet the developmental stages of the Early Childhood student. Keep in mind that behaviors that seem inappropriate for older students may be typical behavior for preschool-age students. The school administration and staff may consult and collaborate with the Early Childhood Office in the development and administration of discipline/remediation measures. This includes the instructional coach or Exceptional Child Education (ECE) resource teacher assigned to the location as well as coordinators and specialists in the Early Childhood Office. Consultation with the Early Childhood Compliance Specialist must occur when an out-of-school placement is being considered. Approval is required from the Early Childhood Director and Assistant Superintendent for out-of-school placement of an early childhood student.

Range of Responses to Early Childhood/Preschool Behavior

LEVEL 1	Mild—Classroom Level Student displays only minor inappropriate behaviors, which are developmentally appropriate and should be viewed as learning opportunities rather than misbehavior. Thus, staff should approach these situations as teaching opportunities rather than something that requires a reprimand. Examples of minor inappropriate behavior include yelling, peer conflict, delaying or refusing to follow directions, inability to accept feedback, crying, pouting, or whining. Students at Level 1 are typically responsive to the universal strategies that should be in place in all classrooms and implemented regularly by all teachers in all settings. This includes behavior expectations that are taught directly to all children through discussion, modeling, and role-play. Communicate with children at eye level, and reference behavior expectations when providing specific acknowledgment for desirable behavior and when correcting inappropriate behavior.
LEVEL 2	Moderate— Classroom/Administrator Level Student displays moderate misbehaviors that require official documentation. Examples of Level 2 behaviors include repeated failure to follow directions, elopement attempt, biting with minimal to no physical harm, kicking a student or staff member. Level 2 behaviors must be documented on a Student Disciplinary Form and submitted to the office for administrative approval and documentation in Infinite Campus. Some Level 2 behaviors may require administrative intervention. Parent contact must be made, either by the referring teacher/staff or by the administrator. The administrator will document and communicate administrative intervention provided with the staff member submitting the Student Disciplinary Referral Form. Documentation will be sent home by the office to the parent/guardian via the bus monitor and/or email within 24 hours, and preferably on the day of the behavior.
LEVEL 3	Severe—Administrator Level Student displays serious misbehaviors that require immediate administrative intervention and written documentation. Examples of Level 3 behaviors include throwing items aimed at another student, striking students or adults, and self-harm. ALL Level 3 behaviors require administrative intervention. Parent contact must be made by the administrator immediately regarding the disciplinary action and restraint (if applicable). Documentation will be sent home by the office to the parent/guardian via the bus monitor and/or email within 24 hours, and preferably on the day of the behavior.

Range of Responses to Student Behavior K- 12

LEVEL 1	Level 1 behaviors represent minor disruptions to the classroom environment. Typically, these are not referred to an administrator until the classroom level interventions are not correcting the behavior. With Level 1 behaviors, the goal is to correct the behavior while limiting time missed from class. Repeated misbehavior requires a parent/teacher conference, a conference with the counselor and/or a conference with an administrator. Staff should use responses in a graduated fashion.
LEVEL 2	Level 2 behaviors represent acts whose frequency or seriousness disrupt the learning environment of the school. These violations always result in the involvement of school administration. With Level 2 behaviors, the goal is to correct the behavior by stressing the seriousness of the offense while keeping the student in school. Staff should use responses in a graduated fashion.
LEVEL 3	Level 3 behaviors represent acts against a person(s) or property which indirectly endanger the health or safety of others in the school. These offenses may result in the short term removal of the student from the school environment because of the severe nature of the offense. Response options may include combinations of interventions, resolutions, and discipline. Staff should use responses in a graduated fashion. Out of school suspensions should include a conference with parent and student the morning the student returns to school at the end of the suspension.
LEVEL 4	Level 4 behaviors represent acts against a person(s) or property which may directly or indirectly endanger the health or safety of others. These offenses always result in administrative action, possible notification of appropriate law enforcement authorities, and immediate removal of the student from school. The school will make a recommendation to the Office of Student Relations for an administrative hearing to determine next steps. In the case of Level 4 violations, response options at the school level are limited due to the seriousness of the violation and the direct or indirect endangerment to the health and safety of others.

BEHAVIOR RESOLUTION STRATEGIES AND DEFINITIONS

BEHAVIOR RESOLUTION STRATEGIES	DEFINITION
Behavior Contract	School staff, with input from the student, agree to a criterion for success. Plans should include a progress monitoring component (daily, weekly, etc.), review period, and involve rewards and incentives.
Behavior Reflection	Student uses a protocol (individualized to their needs) provided by school staff to reflect on current behavior, choice making, replacement behaviors, and/or next steps. Staff should review the student's responses, provide feedback, and assist with any identified needs.
Bus Suspension	Bus suspensions can be issued for one-way or both ways to school. When suspended from the bus, students must acquire alternative transportation to school for the duration of the suspension. Parents will be notified by letter or electronically.
Counselor Conference	Students can request to see a counselor or be referred by school staff. Counselors will function as listeners, problem solvers, and supporters. Counselors may choose to reach out to other school staff, the students' families, or other relevant partners, to acquire resources needed to assist the student with improved behavior and choice making.
Detention	Detention is assigned to students outside of the school day. Detention time assigned can vary according to site.
ISAP	When assigned to In School Adjustment Program (ISAP) students report to an alternative location in the school. ISAP is assigned during the school day. ISAP is an In-School Removal (INSR) and minutes lost while attending ISAP are accrued and reported to the state.
Letter	A formal communication is sent to a parent/guardian by mail or electronically. The communication can function as a meeting notice, a recap of a discussion, a briefing on a student conference, etc.

Mental Health Conference	Students can request to see a Mental Health Professional (MHP) or be referred by school staff or their parent/guardian. MHPs can be JCPS employees but can also be community-based practitioners serving the student while at school. MHPs are credentialed mental health providers and can perform a variety of services, including but not limited to, counseling, threat assessment, diagnostic assessments, referrals to other relevant supports, etc. MHPs can have initial meetings and conversations with students. If necessary, support from the MHP will be ongoing. Parent permission is required for students under the age of 18. Any referral to an outside agency or mental health practitioner requires parent consent prior to release of student information or referral for treatment.
Mobile Assessment	Mobile Assessments are requested by staff for students experiencing crisis, manifesting thoughts or actions related to self-harm or harm of others, etc. Mental health providers perform an on-site threat assessment and/or screening, determine level of response, and needed supports for the student. Parent permission is required for students under the age of 18.
Office Time Out	Office Time Outs occur in one of the school offices, and function as a time for a student to de-escalate or compose themselves following a conversation or event. Office Time Out is an In-School Removal (INSR) and minutes lost while in an Office Time Out are accrued and reported to the state.
Parent/Guardian Conference	A conference is held with a student's parent or guardian. Conferences can include discussion of an incident, information gathering about the needs of a student, a new or existing support plan, student's progress, etc.
Peer Conflict Mediation	Conflict between students is discussed and ideally resolved through a restorative conversation led by peers or staff member. School staff must obtain parent and student consent prior to the mediation.
Phone Call	A phone call is made to a parent/guardian. The communication can be from a teacher, counselor, or administrator. Conversations can include a meeting notice, a recap of a discussion, a briefing on a student conference, etc.
Positive Action Center	The Positive Action Center (PAC) is a non-instructional space in the school building where students can go, or be escorted, to avoid escalation or increased severity of an offense. In this space, staff de-escalate and coach in an attempt to resolve the issue of concern. The PAC resolution should be short-term in nature, not to exceed an instructional period. PAC is an In-School Removal (INSR) and minutes lost while assigned to PAC are accrued and reported to the state.
Refer to YSC/FRYSC	Students can request to see a Youth Services Coordinator (YSC) or be referred by school staff. Family Resource Youth Services Centers assist JCPS families with removing barriers to learning. Clothing assistance, food assistance, and other social service referrals can be provided through the FRYSC.
Restorative Conference	This is a conversation following a specific Restorative Practices protocol. During a restorative conference, the student is given the opportunity to explain what happened from his/her perspective. The student is asked to identify who was harmed by the event and what might be done to make things right. Consequences for the event are explained to the student, as well as clearly communicated expectations for moving forward. The conference is facilitated by the school administrator, and may also include parents, support staff, students, and/or teachers as needed.
Restorative Circle	A facilitated discussion circle where students, or students and staff, have the opportunity to discuss concerns with one another and resolve conflicts. The facilitator ensures participants create circle agreements, use a talking piece, and keep focused on the specific issue at hand.
Saturday School	Saturday School is assigned to students outside of the school day, on Saturdays. Time assigned can vary according to site.
School Restitution	In the event a student damages/destroys property, vandalizes property, litters or creates an unnecessary mess, staff can provide students the opportunity to restore, repair, or improve the situation/equipment/property/campus. The restitution should be related to or relevant to the unacceptable behavior of the student.
Out of School Suspension	Not permitting a student to attend school for full or partial day/s following appropriate due process procedures. Students sent home from school early as a behavior event should be documented as a partial day suspension. School cancellations do not count as a suspension day. Parents will be notified by letter or electronically. Suspensions are an Out of School Removal and minutes lost while suspended are accrued and reported to the state. Suspension of primary school students shall be considered only in exceptional cases where there are safety issues for the child or others. (KRS 158.150)
Student Conference	Staff discuss expectations, gather information, or coach a student regarding their behavior.
Team Time Out	Teachers on an instructional team collaborate to offer students a reflection or de-escalation space in their classrooms (with consideration for the individual student needs). If a student begins to struggle with behavior in their classroom, they can take a time out in the other teacher's classroom and attempt to resolve the issue of concern so they can remain in class without any, or additional consequences. Team Time Out is an In-School Removal (INSR) and minutes lost while in a Team Time Out are accrued and reported to the state.

BEHAVIOR RESOLUTIONS**Grades Pre-K–5**

LEVEL 1	LEVEL 2	LEVEL 3	LEVEL 4	BEHAVIOR	LEVEL 1	LEVEL 2	LEVEL 3	LEVEL 4
		•	•	Arson*		•	•	
		•	•	Assault* I, II, III, IV – Staff or Other		•	•	
		•	•	Assault* I, II, III, IV – Student		•	•	
		•	•	Bomb threat*		•		
	•	•	•	Bullying/Cyberbullying		•	•	
•				Cheating/Academic dishonesty (results in academic consequence)		•	•	
•	•			Dress code violation		•	•	
	•	•	•	Drug/Alcohol distribution*			•	•
•	•	•		Drug/Alcohol possession* (Referral for treatment)			•	•
•	•	•		Drug/Alcohol under the influence* (Referral for treatment)			•	•
•	•			Excessive noise		•	•	
•	•	•		Extending body parts or throwing objects out of bus door/window		•	•	•
•	•	•		Failure to remain seated on the bus			•	•
•	•			Failure to attend detention		•	•	
•	•			False information to staff		•	•	
		•	•	Falsely activating a fire alarm/safety equipment			•	•
•	•	•		Fighting Student to Student				
		•	•	Fireworks/Explosive devices possession or use*		•	•	
•	•			Forgery/Counterfeiting*		•	•	•
•	•			Gambling*			•	
	•	•	•	Harassment/Harassing communications/Sexual Harassment toward staff*		•	•	
	•	•	•	Harassment/Harassing communications / Sexual Harassment toward student*		•	•	
•	•			Horseplay		•	•	
				Inappropriate sexual behavior			•	•
•	•	•		Grades K through 3			•	•
	•	•		Grades 4 and 5				
•	•			Inappropriate use of district technology				
•	•	•		Inappropriate use of a mobile device				
•	•	•		Intentionally throwing or releasing an object				
				ISAP removal/walk out		•	•	
				Leaving class without permission	•	•		
				Leaving school grounds/bus without permission	•	•	•	
				Loitering on school grounds	•			
				Nonattendance to class/cutting class	•	•		
				Profanity/Vulgarity	•	•		
				Profanity/Vulgarity toward staff/student	•	•	•	
				Refusal/failure to attend ISAP		•	•	
				Robbery*			•	•
				Sexual abuse/Sexual assault*			•	•
				Spitting	•	•	•	
				Striking—Student	•	•	•	•
				Striking—Staff or Other		•	•	•
				Talking out in class	•	•		
				Taunting, baiting, inciting a fight	•	•	•	
				Terroristic threatening I, II, III*			•	•
				Theft/Vandalism*				
				Grades K through 3	•	•		
				Grades 4 and 5	•	•	•	•
				Tobacco/Alternative Nicotine/Vapor Product distribution*		•	•	
				Unexcused tardiness to class	•	•		
				Unintentional Physical Contact—Staff	•	•	•	
				Use/Possession of tobacco/alternative nicotine/vapor products* (Referral for treatment)	•	•		
				Violation of personal electronic/telecommunication device policy	•	•		
				Weapons/Dangerous instruments*		•	•	•
				All other criminal offenses: kidnapping, extortion, etc.* (law)			•	•
				* This infraction is a law violation and reported to the Kentucky Department of Education.				

BEHAVIOR RESOLUTIONS**Grades 6-12**

				BEHAVIOR					
LEVEL 1	LEVEL 2	LEVEL 3	LEVEL 4	Prior to choosing the level of consequence, administrators should consult Progressive Discipline procedures outlined on page 24.		LEVEL 1	LEVEL 2	LEVEL 3	LEVEL 4
		•	•	Arson*	Inappropriate use of a mobile device	•	•	•	
		•	•	Assault* I, II, III, IV – Staff or Other	Intentionally throwing or releasing an object	•	•	•	
		•	•	Assault* I, II, III, IV – Student	ISAP removal/walk out		•	•	
		•	•	Bomb threat*	Leaving class without permission	•	•		
	•	•	•	Bullying/Cyberbullying	Leaving school grounds/bus without permission	•	•	•	
•				Cheating/Academic dishonesty (results in academic consequence)	Loitering on school grounds	•	•		
•	•			Dress code violation	Nonattendance to class/cutting class	•	•		
	•	•	•	Drug/Alcohol distribution*	Profanity/Vulgarity	•	•		
	•	•	•	Drug/Alcohol possession* (Referral for treatment)	Profanity/Vulgarity toward staff/student	•	•	•	
	•	•	•	Drug/Alcohol under the influence* (Referral for treatment)	Refusal/failure to attend ISAP		•	•	
•	•			Excessive noise	Robbery*			•	•
•	•	•		Extending body parts or throwing objects out of bus door/window	Sexual abuse/Sexual assault*			•	•
•	•			Failure to remain seated on the bus	Spitting	•	•	•	
•	•			Failure to attend detention	Striking – Student		•	•	•
•	•	•		False information to staff	Striking - Staff or Other		•	•	•
		•	•	Falsely activating a fire alarm/safety equipment	Talking out in class	•	•		
	•	•	•	Fighting Student to Student	Taunting, baiting, inciting a fight	•	•	•	
		•	•	Fireworks/Explosive devices possession or use*	Terroristic threatening I, II, III*			•	•
•	•	•		Forgery/Counterfeiting*	Theft/Vandalism*	•	•	•	•
				Gambling*	Tobacco/Alternative Nicotine/Vapor Product distribution*		•	•	
•	•			Grades 6 through 8	Unexcused tardiness to class	•	•		
•	•	•		Grades 9 and 12	Unintentional Physical Contact—Staff	•	•	•	
	•	•	•	Harassment/Harassing communications/ Sexual Harassment toward staff*	Use/Possession of tobacco/alternative nicotine/vapor products* (Referral for treatment)	•	•		
	•	•	•	Harassment/Harassing communications / Sexual Harassment toward student*	Violation of personal electronic/ telecommunication device policy	•	•		
•	•			Horseplay	Weapons/Dangerous instruments*			•	•
				Inappropriate sexual behavior	All other criminal offenses: kidnapping, extortion, etc.* (law)			•	•
	•	•	•	Grades 6 through 8	* This infraction is a law violation and reported to the Kentucky Department of Education.				
		•	•	Grades 9 and 12					
•	•			Inappropriate use of district technology					

BEHAVIOR EVENT TYPE DEFINITIONS FOR THE SCHOOL SETTING

BEHAVIOR	DEFINITION
Arson	Attempting to set, aiding in setting, or intentionally setting a fire.
Assault in the first degree (KRS 508.010)	A person is guilty of assault in the first degree when the student: <ol style="list-style-type: none"> 1. (a) Intentionally causes serious physical injury to another person by means of a deadly weapon or a dangerous instrument; or 2. (b) Under circumstances manifesting extreme indifference to the value of human life, wantonly engages in conduct which creates a grave risk of death to another and thereby causes serious physical injury to another person.
Assault in the second degree (KRS 508.020)	A person is guilty of assault in the second degree when the student: <ol style="list-style-type: none"> 1. (a) Intentionally causes serious physical injury to another person; or 2. (b) Intentionally causes physical injury to another person by means of a deadly weapon or a dangerous instrument; or 3. (c) Wantonly causes serious physical injury to another person by means of a deadly weapon or dangerous instrument.
Assault in the third degree (KRS 508.025)	A person is guilty of assault in the third degree when the student: <ol style="list-style-type: none"> 1. (a) Recklessly, with a deadly weapon or dangerous instrument, or intentionally causes or attempts to cause physical injury to: <ol style="list-style-type: none"> 9) A public or private elementary or secondary school or school district classified or certified employee, school bus driver, or other school employee acting in the course and scope of the employee's employment. (10) A public or private elementary or secondary school or school district volunteer acting in the course and scope of that person's volunteer service for the school or school district;
Assault in the fourth degree (KRS 508.030)	A person is guilty of assault in the fourth degree when the student: <ol style="list-style-type: none"> 1. (a) Intentionally or wantonly causes physical injury to another person; or (b) With recklessness, causes physical injury to another person by means of a deadly weapon or a dangerous instrument.
Bomb Threat	A threat of a bomb or other explosive device made verbally, in writing, or via social media, to a staff, student, or community member.
Bullying/ Cyberbullying (KRS 158.148)	Pursuant to KRS 158.148, Bullying is defined as: <ol style="list-style-type: none"> (1) (a) As used in this section, "bullying" means any unwanted verbal, physical, or social behavior among students that involves a real or perceived power imbalance and is repeated or has the potential to be repeated: <ol style="list-style-type: none"> 1. That occurs on school premises, on school-sponsored transportation, or at a school-sponsored event; or 2. That disrupts the education process. (b) This definition shall not be interpreted to prohibit civil exchange of opinions or debate or cultural practices protected under the state or federal Constitution where the opinion expressed does not otherwise materially or substantially disrupt the education process. <p>Cyberbullying is bullying that takes place using electronic technology.</p>
Cheating/Academic Dishonesty	Includes but is not limited to deceiving, tricking, defrauding, and/or otherwise taking unfair or unethical advantage of a situation to benefit someone's grade, academic standing, or status.
Dress Code Violation	Student is not in compliance with the expectations in the local school's SBDM approved Dress Code Policy.
Drug/Alcohol Distribution	Any offense of trafficking or distribution of drugs, alcohol on school grounds or at a school event. This includes alcohol, illegal drugs, prescription drugs, over-the-counter drugs, look-alike drugs/alcohol. A student found to be in possession of more drugs/alcohol than would be consumed by one person, in one day, will be presumed to be trafficking as prescribed by law.
	In addition to disciplinary consequences any contraband will be confiscated by school administration. Parents will be contacted and offered information about substance abuse support. The suspension may be reduced by the assistant director of Student Relations after consulting with the local school principal as a result of a successful enrollment in a substance abuse program. Law enforcement officials may be notified by local school administration.

Drug/Alcohol Possession/Under the Influence	<p>The use or possession of alcohol, illegal drugs, prescription drugs, over-the-counter drugs, drug paraphernalia, and look-alike drugs/alcohol on school grounds or at a school-sponsored event. Any substance that can be reasonably mistaken for a controlled substance is considered a look-alike drug. This includes nonalcoholic beer and wine. Any student who uses, distributes, or represents a look-alike drug as authentic will be treated as if it were authentic, according to state and federal laws. Any prescribed or over the counter medications taken during the school day must be given to the school's JCPS Health Services trained staff with the appropriate parent permissions and medical forms submitted.</p> <p>Under the influence will be determined by having an administrator and another adult verify that the student's behavior(s) indicate(s) drug or alcohol abuse and that the student should be removed from the school. A student will be considered under the influence when one or more of the following indicators are noted: vomiting, staggering, emitting an indicative odor, exhibiting incoherence/disorientation, slurring speech, exhibiting dilated pupils, admission of guilt, and/or displaying other physical evidence.</p> <p>In addition to disciplinary consequences any contraband will be confiscated by school administration. Parents will be contacted and offered information about substance abuse support. The suspension may be reduced by the assistant director of Student Relations after consulting with the local school principal as a result of a successful enrollment in a substance abuse program. Law enforcement officials may be notified by local school administration.</p>
Excessive Noise	Student interactions and voice level are above the expectations set forth by school staff and are a barrier to the learning environment.
Extending body parts throwing objects or out of bus door/window	Placing any item or body part outside of the bus window resulting in increased risk for injury. This includes throwing objects from a bus window or door.
Failure to remain seated on the bus	Student refusal to stay in seat or assigned seat while bus is in motion
Failure to attend detention	Student fails to attend detention assigned as a behavior consequence.
False Information to Staff	Student knowingly provides partial, inaccurate, or no information to staff when asked.
Falsely Activating a Fire Alarm/Safety Equipment	Student pulls, activates, or presses a fire alarm device or extinguisher in a non-emergency situation. This includes tampering with bus evacuation doors and windows.
Fighting - Student to Student	The use of physical violence between two students or the use of violence by a student on another person (excludes verbal confrontations, threats, intimidation, and other encounters). Administrators may use professional judgment in cases where the investigation yields a clear aggressor/initiator and may differentiate consequences accordingly
Fireworks/Explosive Devices	Possession or use of a device containing gun powder or other combustible chemicals.
Forgery/Counterfeiting	The creation or alteration of a written instrument (e.g., check, transcript, identification, currency, communication, or any other official document).
Gambling	Participating in games of chance or skill for money or profit.
Harassment/Harassing Communications Toward- Staff or Student (KRS 525.070 & KRS 525.080/Board Harassment Discrimination Policy 09.42811)	<p>Harassment KRS 525.070</p> <p>(1) A person is guilty of harassment when, with intent to intimidate, harass, annoy, or alarm another person, he or she:</p> <ul style="list-style-type: none"> (a) Strikes, shoves, kicks, or otherwise subjects him to physical contact; (b) Attempts or threatens to strike, shove, kick, or otherwise subject the person to physical contact; (c) In a public place, makes an offensively coarse utterance, gesture, or display, or addresses abusive language to any person present; (d) Follows a person in or about a public place or places; (e) Engages in a course of conduct or repeatedly commits acts which alarm or seriously annoy such other person and which serve no legitimate purpose; or

Harassment/Harassing Communications Toward Staff or Student (KRS 525.070 & KRS 525.080/Board Harassment Discrimination Policy 09.42811) <i>continued</i>	<p>(f) Being enrolled as a student in a local school district, and while on school premises, on school-sponsored transportation, or at a school-sponsored event:</p> <ol style="list-style-type: none"> 1. Damages or commits a theft of the property of another student; 2. Substantially disrupts the operation of the school; or 3. Creates a hostile environment by means of any gestures, written communications, oral statements, or physical acts that a reasonable person under the circumstances should know would cause another student to suffer fear of physical harm, intimidation, humiliation, or embarrassment <p>Harassing Communications KRS 525.080</p> <p>(1) A person is guilty of harassing communications when, with intent to intimidate, harass, annoy, or alarm another person, he or she:</p> <p>(a) Communicates with a person, anonymously or otherwise, by telephone, telegraph, mail, or any other form of written communication in a manner which causes annoyance or alarm and serves no purpose of legitimate communication;</p> <p>(b) Makes a telephone call, whether or not conversation ensues, with no purpose of legitimate communication; or</p> <p>(c) Communicates, while enrolled as a student in a local school district, with or about another school student, anonymously or otherwise, by telephone, the Internet, telegraph, mail, or any other form of electronic or written communication in a manner which a reasonable person under the circumstances should know would cause the other student to suffer fear of physical harm, intimidation, humiliation, or embarrassment and which serves no purpose of legitimate communication.</p>
Horseplay	Student(s) are engaged in rough housing, pushing, running, excessive play, etc., that are not appropriate or safe in the school environment.
Inappropriate Sexual Behavior	The possession and/or display of pornography, and/or indecent exposure, and/or having inappropriate sexual contact.
Inappropriate Use of District Technology	Any violation of the JCPSNet Acceptable Use Policy. The entire policy can be found in APPENDIX C.
Inappropriate Use of a Mobile Device	Use of a mobile or handheld device to make, transmit, or distribute any inappropriate recording, picture, or image without the consent of the person(s) recorded, or that violates their personal expectations of privacy, the SSBIH, or the law.
Intentionally Throwing or Releasing an Object	Intentionally throwing or releasing an object that has the potential to cause a disturbance, injury, or property damage, when the act of throwing or releasing the object is not part of a supervised activity.
ISAP Removal/Walk-out	Students who leave ISAP for any reason without proper authorization from a teacher, administrator, or other school staff. This includes students who must be removed from the ISAP classroom for any disciplinary action.
Leaving Class without Permission	Students who leave class for any reason without proper authorization from a teacher, administrator, or other school staff.
Leaving School Grounds/Bus without Permission	Students who leave school grounds for any reason without proper authorization and/or without following proper sign-out procedures. This includes getting off the bus at the wrong stop without previous approval.
Loitering on School Grounds	Remaining on school grounds when he/she loiters or remains in or around a school building or grounds, while not having any reason or relationship involving the school or a school event, or any other license or privilege to be there.
Nonattendance to Class/Cutting Class	Skipping any portion of a class, an entire class, or classes, without authorized permission.
Profanity/Vulgarity	Swearing, cursing, or making obscene gestures.
Profanity/Vulgarity toward student or staff	Swearing, cursing, or making obscene gestures specifically targeting school students or personnel.
Refusal/Failure to Attend ISAP	Failure of a student to attend an assignment to the ISAP classroom.
Robbery	Theft involving the use of physical force, deadly weapons, or dangerous instruments.
Sexual Abuse/Sexual Assault	Actions, sexual in nature, intending to cause or causing physical injury to another person by means of a deadly weapon or dangerous instrument, or intentionally causing extreme distress to another person.
Sexual Harassment	Unwelcome sexual advances, requests for sexual favors, other verbal and/or physical behaviors of a sexual nature (including sexual violence), and the use of symbols to create a climate that adversely effects the work environment or educational process.

Spitting	The act of forcibly ejecting saliva or other substances from the mouth.
Striking—Student	Intentional physical contact with a student.
Striking—Staff or other	Intentional physical contact with a faculty member, staff member, or other school official.
Talking Out in Class	Repetitive talking at inappropriate times or discussing irrelevant content in a manner disruptive to the learning process.
Taunting, Baiting, or Inciting a Fight	Instigating, encouraging, or promoting a physical altercation or disagreement amongst one or more student(s).
Terroristic threatening in the first degree. (KRS 508.075) Penalties—(Class C Felony) 1. Imprisonment of not less than 5 years and nor more than 10 years. 2. Fine not less than \$1,000 and not greater than \$10,000.	<p>(1) A person is guilty of terroristic threatening in the first degree when he or she:</p> <p>(a) Intentionally makes false statements that he or she or another person has placed a weapon of mass destruction on:</p> <ol style="list-style-type: none"> 1. The real property or any building of any public or private elementary or secondary school, vocational school, or institution of postsecondary education; 2. A school bus or other vehicle owned, operated, or leased by a school; 3. The real property or any building public or private that is the site of an official school-sanctioned function; or 4. The real property or any building owned or leased by a government agency; or <p>(b) Intentionally and without lawful authority, places a counterfeit weapon of mass destruction at any location or on any object specified in paragraph (a) of this subsection...</p> <p>(3) A person is not guilty of commission of an offense under this section if he or she, innocently and believing the information to be true, communicates a threat made by another person to school personnel, a peace officer, a law enforcement agency, a public agency involved in emergency response, or a public safety answering point and identifies the person from whom the threat was communicated, if known.</p>
Terroristic threatening in the second degree. (KRS 528.078) Penalties—(Class C or D Felony) 1. Imprisonment of not less than 1 year and nor more than 10 years. 2. Fine not less than \$1,000 and not greater than \$10,000.	<p>(1) A person is guilty of terroristic threatening in the second degree when, other than as provided in KRS 508.075, he or she intentionally:</p> <p>(a) With respect to a school function, threatens to commit any act likely to result in death or serious physical injury to any student group, teacher, volunteer worker, or employee of a public or private elementary or secondary school, vocational school, or institution of postsecondary education, or to any other person reasonably expected to lawfully be on school property or at a school sanctioned activity, if the threat is related to their employment by a school, or work or attendance at school, or a school function. A threat directed at a person or persons or at a school does not need to identify a specific person or persons or school in order for a violation of this section to occur;</p> <p>(b) Makes false statements by any means, including by electronic communication, for the purpose of:</p> <ol style="list-style-type: none"> 1. Causing evacuation of a school building, school property, or school sanctioned activity; 2. Causing cancellation of school classes or school sanctioned activity. or 3. Creating fear of serious bodily harm among students, parents, or school personnel. <p>(c) Makes false statements that he or she has placed a weapon of mass destruction at any location other than one specified in KRS 508.075; or</p> <p>(d) Without lawful authority places a counterfeit weapon of mass destruction at any location other than one specified in KRS 508.075...</p> <p>(3) A person is not guilty of commission of an offense under this section if he or she, innocently and believing the information to be true, communicates a threat made by another person to school personnel, a peace officer, a law enforcement agency, a public agency involved in emergency response, or a public safety answering point and identifies the person from whom the threat was communicated, if known.</p>
Terroristic threatening in the third degree. (KRS 508.080) Penalties—(Class A Felony) 1. Imprisonment not to exceed twelve months. 2. Fine not to exceed \$500.	<p>(1) Except as provided in KRS 508.075 or 508.078, a person is guilty of terroristic threatening in the third degree when:</p> <p>(a) He threatens to commit any crime likely to result in death or serious physical injury to another person or likely to result in substantial property damage to another person; or</p> <p>(b) He intentionally makes false statements for the purpose of causing evacuation of a building, place of assembly, or facility of public transportation.</p>

Theft	<p>A person is guilty of theft by unlawful taking or disposition when he or she unlawfully:</p> <p>(a) Takes or exercises control over movable property of another with intent to deprive him or her thereof; or</p> <p>(b) Obtains immovable property of another or any interest therein with intent to benefit himself or her- self or another not entitled thereto.</p>
Tobacco/Alternative Nicotine/Vapor Distribution	<p>A deliberate attempt to distribute tobacco/alternative nicotine/vapor products as defined in definition provided in Use/Possession of Tobacco/Alternative Nicotine/Vapor Products section below.</p> <p>Staff will confiscate tobacco/alternative nicotine/vapor products. Parents will be notified and offered information about cessation services, in addition to disciplinary action.</p>
Unexcused Tardiness to Class	<p>Arrival to class after the designated start time without prior authorization from an administrator, teacher, or school staff member.</p>
Unintentional Physical Contact—Staff	<p>Unintentional physical contact with a faculty member, staff member, or other school official.</p>
Use/Possession of Tobacco/Alternative Nicotine/Vapor Products	<p>Possession, consumption, distribution, or selling of any tobacco products, alternative nicotine devices, vapor products, or tobacco-related devices at any time on school property or at off-campus, school sponsored events.</p> <p>The term "tobacco product" means any cigarette, cigar, snuff, smokeless tobacco product, smoking tobacco, chewing tobacco, and any kind or form of tobacco prepared in a manner suitable for chewing or smoking, or both, or any kind or form of tobacco that is suitable to be placed in a person's mouth. The term also includes little cigars, dissolvables, hookah, and blunt wraps.</p> <p>The term "alternative nicotine product" means a noncombustible product containing nicotine that is intended for human consumption, whether chewed, absorbed, dissolved, or ingested by any other means.</p> <p>The term "vapor product" means any noncombustible product that employs a heating element, battery, power source, electronic circuit, or other electronic, chemical, or mechanical means, regardless of shape or size and including the component parts and accessories thereto, that can be used to deliver vaporized nicotine or other substances to users inhaling from the device. "Vapor product" includes but is not limited to any electronic cigarette, electronic cigar, electronic cigarillo, electronic pipe, or similar product or device and every variation thereof, regardless of whether marketed as such, and any vapor cartridge or other container of a liquid solution or other material that is intended to be used with or in an electronic cigarette, electronic cigar, electronic cigarillo, electronic pipe, or other similar product or device.</p> <p>The term "tobacco-related devices" means ashtrays, cigarette papers, or pipes for smoking or any components, parts, or accessories of alternative nicotine devices or vapor products</p>
Violation of Personal Electronic/Telecommunication Device Policy	<p>Violation of personal electronic/telecommunication device policy is defined as a violation of the JCPS Telecommunication Device Policy. The expectation of the policy is as follows:</p> <p>Unless a school/council has been granted a waiver pursuant to Board Policy 02.432, students shall not use/activate and/or display a personal telecommunication device on school property during the course of the instructional day unless they are acting in the capacity of a volunteer firefighter or Emergency Medical Service (EMS) worker. The superintendent may approve the use of personal telecommunication devices as provided in the plan submitted by schools that contain a business and information technology career theme. Personal telecommunication device is defined in KRS 158.165 and includes, but is not limited to, cellular telephones, pagers, walkie-talkies, electronic mail devices, MP3 players, iPods, and video gaming systems. Outside the instructional school day, students shall be permitted to possess and use personal telecommunication devices provided they observe the following four conditions:</p> <ol style="list-style-type: none"> 1. Devices shall not be used in a manner that is disruptive, including, but not limited to, use that: <ul style="list-style-type: none"> —Poses a threat to academic integrity, such as cheating, —Violates confidentiality or privacy rights of another individual, —Is profane, indecent, or obscene, —Constitutes or promotes illegal activity, or —Constitutes or promotes sending, sharing, or possessing sexually explicit messages, photographs, or images using any electronic device. 2. Students are responsible for keeping up with the devices they bring to school. The district shall not be responsible for the loss, theft, or destruction of devices brought onto school property. 3. Students shall comply with any additional rules developed by the school concerning appropriate use of telecommunication or other electronic devices. 4. Students shall not utilize a telecommunication or similar electronic device in a manner that would violate the district's Acceptable Use Policy or procedures or the Student Support and Behavior Intervention Handbook. <p>These offenses are subject to disciplinary action under the Student Support and Behavior Intervention Handbook. In addition, the telecommunication device, including the SIM card, battery, and all other parts of the device, could be confiscated by an administrator and shall be returned to the parent/student/guardian by the end of that school day. Individual schools may set policies that define the progressive consequences for each offense. Administrators have the right to confiscate a phone when a student violates Condition 1, above. In such situations, the phone will be returned at the conclusion of the investigation.</p>
Vandalism	<p>Damaging or defacing school property or the property of school personnel</p>

Weapons/Dangerous Instruments

Weapons/dangerous instruments are not tolerated in the district. Any student who is knowingly in possession of or who is involved in the transfer, storage, or use of a firearm or explosive device will be referred to an alternative school site for a period of one calendar year and not be allowed to return to his or her previously assigned school.

Handgun, Shotgun/Rifle, Pellet/BB/Air Gun, Paintball Gun, Replica/Toy Gun, Stun Gun/Taser Gun, Knife: blade length less than 2.5, Knife: blade length 2.5 inches or greater, Blunt object, Other object, Noxious substance, Substance used as weapon

Definitions of State Reported Weapons

Handgun (Firearm): any firearm that can be held and fired with one hand. This category also includes revolvers and pistols.

Shotgun/Rifle: a shoulder firearm with spiral grooves cut in the inner surface of the gun barrel to give the bullet a rotatory motion and thus a more precise trajectory.

Look-Alike Weapons

Any toy or model weapon that looks enough like an authentic weapon to be reasonably mistaken for one. Any student who presents a look-alike weapon to a staff member or another student as a real weapon and/or who uses it to intimidate, threaten, or harass someone will be treated as if he or she used a real weapon, according to state and federal laws.

JURISDICTION AND APPLICATION OF THE STUDENT SUPPORT AND BEHAVIOR INTERVENTION HANDBOOK

The disciplinary consequences set forth in the Student Support and Behavior Intervention Handbook apply to students at all times, while they are on JCPS property or attending a JCPS event. JCPS property includes any school, or other JCPS facility, including grounds owned or operated by JCPS, JCPS buses, and other JCPS vehicles, and the facility and grounds of any JCPS sponsored activity involving students. Any student that is present when another student(s) is actively engaging in behavior that violates the Student Support and Behavior Intervention Handbook AND the act is a law violation, may also be subject to disciplinary action if the behavior constitutes active participation.

Student conduct occurring outside of school hours or away from school property may be subject to disciplinary action if the school administration reasonably believes, or possesses evidence, that the conduct threatens the health or safety of students or staff, or if conduct causes or is reasonably expected to cause substantial disruption or material interference with school activities.

DUE PROCESS

Whenever a student is accused of committing a violation of the Student Support and Behavior Intervention Handbook, he or she has the right to due process. This means that he or she must:

- 1) Be informed of the charges,
- 2) Be provided with an opportunity to present his or her side of the case, and
- 3) Be provided with an opportunity to appeal the decision.

Due-process procedures will be followed before any suspension, unless immediate suspension is necessary to protect persons or property or to avoid disruption of the ongoing educational process. In such cases, due-process procedures shall be followed within three school days. The appeal process for a suspension is outlined beginning on page 37.

Family Educational Rights and Privacy Act (FERPA)

Discipline records will be kept by the administrator. Records are accessible to teachers, administrators, the student, and/or the parent/guardian as required by FERPA.

Right to Counsel

Persons who are involved in any disciplinary process have the right to legal representation at their own expense.

REPORTING CONCERNS OF IMPROPER TREATMENT OR ABUSE

If, at any time, a parent, guardian, staff member, or other person(s) suspects or witnesses an event that compromises the emotional or physical safety of a student, it should be reported immediately. In JCPS, systems are in place to evaluate, investigate, support, and respond to situations that could present harm to a student. With interest in providing the best service possible to our students and families, we have multiple ways incidences can be reported. Additionally, there is a JCPS Child Abuse Reporting Policy, details are provided below.

- 1) If feasible, we urge parents and guardians to call the building principal and report concerns. If unsuccessful, the assistant superintendent supporting the school should be contacted.
- 2) If concerns involve the potential of bullying or harassment, please call our Bullying Tipline at 1-888-393-6780 or visit our website to complete an online report. See the Bullying Prevention resources on page 16 for more support.
- 3) Parents and guardians may also call the JCPS Call Center at 502-313-4357.

Any allegation made to JCPS staff that involves abuse, must be immediately reported in accordance with the JCPS Child Abuse Reporting Policy which states:

Any teacher, school administrator, or other school personnel who knows or has reasonable cause to believe that a child under age eighteen (18) is dependent, abused, or neglected shall immediately make a report to a local law enforcement

agency or the Kentucky State Police, the Cabinet for Health and Family Services or its designated representative, the Commonwealth's Attorney or the County Attorney in accordance with KRS 620.030.

Under Kentucky law, there are several authorities to which abuse or neglect can and should be reported. It is the District's policy, in compliance with state law, that you should immediately report incidents of suspected abuse or neglect to:

1. The Department of Social Services – Child Protective Services (CPS) Hotline (502-595-4550) or 24-hour Hotline 1-877-597-2331. If you are unable to reach someone at the CPS Hotline, then call:
2. The Crimes Against Children Unit (CACU) of the Louisville Metro Police Department (502-574-2465).

The JCPS Child Abuse Reporting Policy can be found at www.jefferson.kyschools.us/departments/compliance-and-investigations/child-abuse-neglect-and.

RETALIATION AND DISCRIMINATION PROHIBITED

Employees and other students shall not retaliate or discriminate against a student because he or she reports a violation of the Student Support and Behavior Intervention Handbook or assists or participates in any investigation, proceeding, or hearing regarding the violation. The superintendent/designee shall take measures needed to protect students from such retaliation.

STUDENT SEARCHES

JCPS Search and Seizure procedures are located in Appendix D on page 46.

SUSPENSION PROCEDURES

A principal or an assistant principal can suspend a student for offenses as outlined on the Behavior and Range of Corrective Strategies charts beginning on page 28.

- A Level 3/short-term, school suspension is for one to three school days.
- A Level 4/long-term, suspension is for six to ten school days.
- Level 4/long-term suspensions may be referred to the assistant director of Student Relations for a conference.
- A suspension of one to ten school days requires due process, in which the student is told of the charge against him or her, is given a chance to present his or her perspective regarding the incident and is given the right to appeal the decision. Suspension appeal procedures are addressed on page 37.
- A suspension of 11 to 20 school days requires a formal hearing unless such a hearing is waived by the parent/guardian. The procedures for a formal hearing are outlined below.
- A student on suspension may not enter the school or go on any JCPS school grounds unless arrangements for him or her to do so are made with the principal or assistant principal. The student may not attend any day or night JCPS-sponsored function or ride a JCPS bus for the duration of the suspension. Any violation of these conditions will result in further disciplinary action.
- Make-up work may be requested by a student within three school days of his or her return from suspension. Make-up work will include only written daily work, tests, and major projects. Some class work cannot be duplicated and therefore cannot be made up. Make-up work will be provided to the student as arranged with the teacher. The student will have the number of school days of suspension plus one school day from the time he or she receives the make-up work to submit it to the teacher.

When an absence or suspension occurs at the end of a semester or school year, the student or parent/guardian can make arrangements with the school administrator to take tests and turn in major projects. (See page 25.)

- A suspension will be for a definite number of school days and cannot be extended.
- Parents will be notified by letter or electronically of the behavior resulting in suspension, suspension length, and suspension dates.

Formal Hearing

When a student has been suspended for 11 to 20 school days, he or she is entitled to a formal hearing.

- The hearing will be held within three school days of notification of suspension.
- The parent/guardian will be notified of the date, time, and place of the hearing.
- The hearing officer will be appointed by the superintendent/designee.
- Written allegations and information are collected and will be provided to the student and the parent/guardian.
- The student will have a chance to present a defense to the allegations and may be represented by an attorney at his or her own expense.
- The student will be allowed to present witnesses, if relevant to the allegations.
- The parent/guardian may waive the right to the formal hearing.
- The parent/guardian will receive the decision of the hearing officer within five school days in writing.

SUSPENSION APPEAL PROCESS

A student or parent/guardian may request that the student stay in school during the appeal of a suspension. A student determined by the principal to be a danger to others or who is highly likely to be so destructive or disruptive that the education of other students cannot continue in a safe and orderly manner shall not be allowed to attend school during the appeal process unless he or she is referred to an alternative placement.

Appeals should be made in writing and hand delivered, mailed, or emailed to the appropriate administrator. If a parent/guardian/student needs help writing a letter of appeal, he or she may contact Student Relations at 502-485-3335 for assistance. Refer to the chart on page 35. Alternative appeal formats may be accepted. These alternative appeal formats may be initiated and approved through the director of Student Relations. Failure to follow the appeal procedures within the prescribed time limits as described herein will nullify the right of a student or his or her parent/guardian to appeal.

Appeal Procedure for Level 3/Short-Term School Suspensions—One to Three School Days

The following procedures are required when a parent/guardian/student appeals a Level 3/short-term school suspension of one to three school days.

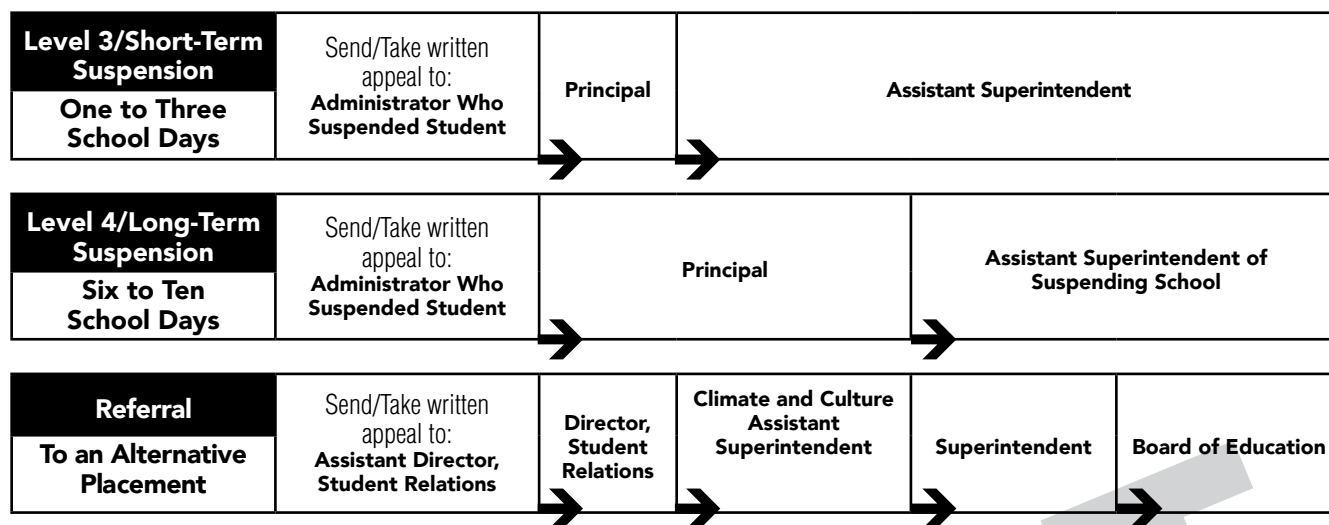
1. Write a letter explaining your reasons for appealing the suspension to the school administrator who suspended the student. Hand deliver, mail, or email the appeal letter to the school within three school days of notification of the suspension and appeal process.
2. If your appeal is denied by the administrator who suspended the student, you may appeal to the principal. The appeal letter must be hand delivered, mailed, or emailed to the principal within five school days of the day you receive your answer from the administrator who suspended the student.
3. If your appeal is denied by the principal, you may appeal to the Achievement Area assistant superintendent (Jefferson County Public Schools, VanHoose Education Center, 3332 Newburg Road, Louisville, KY 40218). The appeal must be hand delivered, mailed, or emailed within five school days of the day you receive your answer from the principal. This is the last step in the appeal process. Refer to the chart on page 35.

Appeal Procedure for Level 4/Long-Term Suspensions—Six to Ten School Days

The following procedures are required when a parent/guardian/student appeals a Level 4/long-term suspension of six to ten school days.

1. Write a letter explaining your reasons for appealing the suspension to the school administrator who suspended the student. Hand deliver, mail, or email the appeal letter to the school within three school days of the notification of the suspension and appeal process.
2. If your appeal is denied by the administrator who suspended the student, you may appeal to the principal. The appeal letter must be hand delivered, mailed, or emailed to the principal within five school days of the day you receive your answer from the administrator who suspended the student.
3. If your appeal is denied by the principal, you may appeal to the assistant superintendent of the suspending school (Jefferson County Public Schools, VanHoose Education Center, 3332 Newburg Road, Louisville, KY 40218). The appeal must be hand delivered, mailed, or emailed within five school days of the day you receive your letter from the principal. This is the last step in the appeal process. Refer to the chart on page 35.

APPEAL PROCESS



ALTERNATIVE PLACEMENT

The goal of behavior support alternative placement helps students improve academic skills, become more self-sufficient, and develop self-control. School administrators will implement progressive discipline with all students in an effort to help them be successful. Students who fail to control their behavior after receiving repeated opportunities and consequences from the school, or students who commit serious offenses, will be suspended and referred to Student Relations so that their cases may be reviewed for potential placement in a behavior support alternative school alternative school. In situations that involve a staff assault or deadly weapon, the student will be automatically placed in one of our behavior support alternative sites. A student's ability to return to the school of origin will be evaluated by the assistant superintendent for Climate and Culture.

A student who has been assigned to a behavior support alternative school must complete the requirements of that program before he or she can return to another Jefferson County public school, unless his or her return is approved by the assistant superintendent of Climate and Culture. Any student who assaults a staff member or brings a gun to school may or may not be allowed to return to his or her previously assigned school.

Offenses Where Alternative Placement Is Considered

If a student is charged with or convicted of a felony offense (or an offense that would be considered a felony if the student were an adult) committed off the school campus and while not engaged in a school-sponsored activity, Student Relations may assign the student to a behavior support alternative school. Students enrolling in JCPS from out of the district may be referred to Student Relations due to behavior issues at prior school, criminal charges, or previous enrollment in a camp/behavior support alternative school.

Criminal Violations

When a student violates a law, school administrators may notify the appropriate law enforcement official. Students convicted of gun- or school-related criminal violations in the community may be subject to alternative placement. Prosecution and adjudication of criminal violations shall occur separately from the administration of school procedures. Release of student records to local law enforcement, including School Resource Officers (SROs), for law enforcement or prosecution purposes is subject to the disclosure requirements of Family Educational Rights and Privacy Act (FERPA) and Kentucky Family Educational Rights and Privacy Act (KFERPA).

Appeal Procedure for Referral to an Alternative Placement

The following procedures are required when a parent/guardian/student appeals the referral to an alternative placement but does not appeal the suspension. A student may not be allowed to attend school during the appeal process if the principal believes that the student is a danger to himself or herself or to others.

1. Write a letter explaining your reasons for appealing the decision to the appropriate assistant director of Student Relations (Jefferson County Public Schools, Lam Building, 4309 Bishop Lane, Louisville, KY 40218). The letter must be mailed, emailed, or delivered within five school days of the decision.
2. If your appeal is denied by the assistant director of Student Relations, you may appeal to the director of Student Relations (Jefferson County Public Schools, Lam Building, 4309 Bishop Lane, Louisville, KY 40218). The appeal must be made in writing and The letter must be mailed, emailed, or delivered within five school days of the day you receive your answer from the assistant director of Student Relations.

3. If your appeal is denied by the director of Student Relations, you may appeal to the assistant superintendent of Climate and Culture (Jefferson County Public Schools, VanHoose Education Center, 3332 Newburg Road, Louisville, KY 40218). The appeal must be made in writing and The letter must be mailed, emailed, or delivered within five school days of the day you receive your answer from the director of Student Relations.
4. If your appeal is denied by the assistant superintendent for Climate and Culture, you may appeal to the superintendent (Jefferson County Public Schools, VanHoose Education Center, 3332 Newburg Road, Louisville, KY 40218). The appeal must be made in writing and The letter must be mailed, emailed, or delivered within five school days of the day you receive your answer from the assistant superintendent for Climate and Culture.
5. If your appeal is denied by the superintendent, you may appeal to the Board of Education (Jefferson County Public Schools, VanHoose Education Center, 3332 Newburg Road, Louisville, KY 40218). The appeal must be made in writing and The letter must be mailed, emailed, or delivered within five school days of the day you receive your answer from the superintendent. This is the last step in the appeal process. Refer to the chart on page 35.

BUS SAFETY

School bus behavior expectations are established to ensure that all students have a safe ride to and from school each day. Positive and proactive strategies will be implemented to foster positive behavior and productive relationships. The school bus is an extension of the classroom, and appropriate behavior is expected at all times. Students are expected to follow the same behavioral standards while riding the school bus as is expected on school property or at school functions, activities, and events. All school rules are in effect while a student is riding the bus or waiting at a designated bus stop.

Violations that occur involving the school bus and/or incidents that occur while students are on the way to school (bus stop/neighborhood) or returning from school (bus stop/neighborhood) may result in disciplinary action. This means that the school administrator can address a student's misbehavior on a school bus with disciplinary actions, which may include suspension of bus privileges, in-school disciplinary measures, suspension from school, and/or referral/placement in an alternative school. JCPS buses are equipped with digital video cameras. Video recordings may be used to document events and responsibility for actions on the school bus.

Safety Expectations for Bus Riders

B	Be Responsible <ul style="list-style-type: none"> • Be on your best behavior. • Obey the driver's instructions. The driver of a school bus is in complete charge of his or her passengers. • Eating, Drinking, and Smoking are not permitted on the school bus. • Keep the bus clean. Do not throw trash on the floor. • Do not mar or deface the bus. Seat covers must not be damaged in any manner. Anyone caught damaging the equipment will be subject to disciplinary action and/or to making restitution. • Pets and animals are not allowed on the bus at any time.
U	Use Respect <ul style="list-style-type: none"> • The driver has the authority to assign seats. • Use your inside voice. • Do not wave or shout to pedestrians or occupants or other vehicles. Do not throw objects out of the bus windows. • Know that using profanity and making obscene gestures on the school bus is prohibited. • Keep hands, feet, and objects to yourself. • Do not fight or scuffle on the bus or create any loud disturbances. • Refrain from talking to the driver, except in an emergency.
S	Stay Safe <ul style="list-style-type: none"> • Be seated immediately and remain seated while the bus is in motion. If a seat is not available, hold onto the back of a seat. • Keep your head, hands, and feet inside the bus. • Students may not stand in the stairwell while the bus is in motion. • Books and backpacks should remain in your lap, and not placed in the aisle way. Instruments and large objects will be allowed on the bus only if they can be help on the lap. • Do not tamper with the emergency door, fire extinguisher, or other equipment on the bus.

APPENDIX A

District & State Requirements for Enrollment, Attendance, and Absences

Kentucky Law KRS 158.030, states "...any child who is six (6) years of age, or who may become six (6) years of age by August 1, shall attend public school or qualify for an exemption as provided by KRS 159.030. Any child who is five (5) years of age, or who may become five (5) years of age by August 1, may enter a primary school program" or may wait until the child is six (6) years old. Enrollment of children into the Primary Program at the age of 5 is voluntary; however, once a child is enrolled, Kentucky law makes attendance mandatory. If, however, within two pupil months after enrollment a child is found to be immature or by mutual agreement by the parent, guardian, or other custodian and the school, the student may withdraw with a withdrawal code of W17.

Additional Resources:

Kentucky Department of Education (KDE) Attendance Manual

https://www.google.com/url?sa=t&rct=j&q=&esrc=s&source=web&cd=2&ved=2ahUKEwjkmMmXhunhAhXQUt8KHTx-CL0QFjABegQ-IBRAC&url=https%3A%2F%2Feducation.ky.gov%2Fdistricts%2Fenrol%2Fdocuments%2F18-19%2520Pupil%2520Attendance%2520Manual%2520ADA_rd.pdf&usg=AOvVaw2g4voKl-5JW2FbP3FDxn4B

JCPS Pupil Personnel Manual

<https://www.jefferson.kyschools.us/data-management-planning-and-program-evaluation-division/data-control/attendance>

Compulsory Attendance

As of July 1, 2015, new compulsory attendance laws (KRS 159.010) went into effect, which requires all students to attend school until they are 18 years old or have completed a high school program. The district records excused and unexcused absences daily to comply with Kentucky law, KRS 159.150, which states, "Any child who has attained the age of six years but has not reached his or her eighteenth birthday, who has been absent from school without a valid excuse for three or more days, or [who has been] tardy without a valid excuse on three or more days is a truant. Any student enrolled in a public school who has attained the age of 18 years but has not reached his or her twenty-first birthday, who has been absent from school without a valid excuse for three or more days, or [who has been] tardy without a valid excuse on three or more days is a truant." The law defines a habitual truant as "any student who has been reported as truant two or more times." Kentucky law, KRS 159.990, holds accountable a public school student who has attained the age of 18, but who has not reached his or her twenty-first birthday, if the student fails to comply with school truancy laws; holds accountable the parent/guardian or custodian of a public school student who has not reached his or her eighteenth birthday if the student fails to comply with school truancy laws; and holds accountable the court-appointed guardian of a public school student who

has been identified as an exceptional child or youth and has not reached his or her twenty-first birthday if the student fails to comply with school truancy laws. Any parent/guardian or custodian who fails to comply with the requirements may face fines of \$100 for the first offense and \$250 for the second offense and may be charged with a Class B misdemeanor for each subsequent offense. Charges of educational neglect and/or unlawful transaction with a minor may also be filed.

Absences

An excused absence or tardy is one for which work may be made up. Excused absences and tardies include such circumstances and occasions as a death or severe illness in the student's immediate family, an illness of the student, religious holidays and practices, one day for attendance at the Kentucky State Fair, and other valid reasons as determined by the principal. When a student accumulates a total of ten full-day absences due to illness, parents are required to present a written statement from a medical professional (e.g., doctor, dentist, psychologist) for additional absences during the current school year in order for the student to be excused.

If a student's parent or legal guardian is a member of the United States Armed Forces, including a member of a state National Guard or Reserve unit, and is called to federal active duty, a JCPS principal shall grant the student an excused absence for one school day when the parent/guardian is deployed. The student will also be granted an excused absence for one school day when the parent/guardian returns from deployment. If a student's parent/guardian is stationed out of the country and is granted rest and recuperation leave, the student will be allowed up to ten excused absences for visitation. A student receiving an excused absence for these purposes shall be considered present in school and will have the opportunity to make up schoolwork missed and will not have his or her class grades adversely affected for lack of class attendance or class participation due to the excused absence.

Excused absences for the purpose of an Educational Enhancement Opportunity (EHO need link) may be granted for up to ten school days in order for a student to pursue an opportunity that the local school administrator determines to be of significant educational value, provided that the date(s) requested does not conflict with state or district testing periods. Requests must be made on appropriate forms and received by the school five days in advance of the anticipated absence. This opportunity may include, but is not limited to, participation in an educational foreign exchange program or an intensive instructional, experiential, or performance program in one of the core curriculum subjects of English, science, mathematics, social studies, foreign language, or the arts. A principal's determination may be appealed to the superintendent/designee whose decision may then be appealed to the Board of Education. A student receiving an excused absence to pursue an educational enhancement opportunity shall be considered present in school during the excused absence.

Parents/Guardians are to notify the school on the day on which their child is absent and provide notes to explain and confirm excused absences and tardies within three school days of the student's return.

When a student is habitually absent, the local school clerical and/or administrative staff may:

- Notify the parent/guardian by telephone or in writing of unexcused absence(s).
- Send a letter to the parent/guardian stating that the student is truant after the third unexcused absence.
- Hold a conference with the parent/guardian after the sixth unexcused absence.
- Notify the Pupil Personnel Department electronically via JCPS Student Attendance Reporting System (SARS) after the sixth unexcused absence and record any interventions conducted at the local school.
- Refer the student to the FRYSC coordinators, School Nurses, Mental Health Practitioners or additional collaborating agencies, who will work with the student and his or her family in support of regular attendance.

When a student has six or more unexcused absences:

- Students who continue to be absent from school may be required to attend a formal district-level review with their parent/guardian to recommend further services or interventions.
- Pupil Personnel staff or a school social worker may visit the home of the student and/or schedule a Parent Engagement Meeting (PEM) in collaboration with additional community agencies to address all barriers to regular school attendance.
- A final notice may be served in person or sent by certified mail to the parent/guardian.
- Pupil Personnel staff or a school social worker may require a parent/guardian conference and/or file an educational neglect report with Child Protective Services (CPS).
- A student may be referred to Family Court by the assistant director of Pupil Personnel and may be subject to legal action if absences continue to accumulate.

Make-Up Work

A student receiving an excused absence shall have the opportunity to make up missed schoolwork and not have his or her class grades adversely affected for lack of class attendance or class participation due to the excused absence. A student returning to school after an excused absence or suspension may request make-up work within three school days of his or her return to each class. The student will have the number of school days of absence or suspension plus one school day from the time he or she receives the make-up work to complete the work and submit it to the teacher. For ECE students or students with 504 plans, this must be done in accordance with the IEP.

The local School-Based Decision Making (SBDM) Council or, if none exists, the principal, with input from teachers and parents, shall establish rules regarding make-up work for unexcused absences other than suspensions.

APPENDIX B

Use of Physical Restraint and Seclusion

704 KAR 7:160. Use of physical restraint and seclusion in public schools. The JCPS Board of Education Policy regarding Restraint and Seclusion, based on the regulation, can be found at _____.

RELATES TO: KRS 156.160(1)(h), 158.444(1)

STATUTORY AUTHORITY: KRS 156.160(1)(h), 156.070, 158.444 (1)

NECESSITY, FUNCTION, AND CONFORMITY: KRS 156.160(1)(h) and 158.444 (1) give the Kentucky Board of Education the authority to promulgate administrative regulations related to medical inspection, physical and health education and recreation, and other regulations necessary or advisable for the physical welfare and safety of the public school children. This administrative regulation establishes the requirements for the use of physical restraint and seclusion in districts and the notification and data reporting requirements for the use of physical restraint and seclusion in districts and does not prohibit the lawful exercise of law enforcement duties by sworn law enforcement officers.

Section 1. Definitions.

- (1) "Aversive behavioral interventions" means a physical or sensory intervention program intended to modify behavior that the implementer knows would cause physical trauma, emotional trauma, or both, to a student even when the substance or stimulus appears to be pleasant or neutral to others and may include hitting, pinching, slapping, water spray, noxious fumes, extreme physical exercise, loud auditory stimuli, withholding of meals, or denial of reasonable access to toileting facilities.
- (2) "Behavioral intervention" means the implementation of strategies to address behavior that is dangerous or inappropriate, or otherwise impedes the learning of the students.
- (3) "Chemical restraint" means the use of medication to control behavior or restrict a student's freedom of movement that includes over-the-counter medications used for purposes not specified on the label but does not include medication prescribed by a licensed medical professional and supervised by qualified and trained individuals in accordance with professional standards.
- (4) "Dangerous behavior" means behavior that presents an imminent danger of physical harm to self or others but does not include inappropriate behaviors such as disrespect, non-compliance, insubordination, or out of seat behaviors.
- (5) "De-escalation" means the use of behavior management techniques intended to:
 - (a) Mitigate and defuse dangerous behavior of a student; or
 - (b) Reduce the imminent danger of physical harm to self or others.
- (6) "Emancipated youth" means a student under the age of eighteen (18) who is or has been married or has by court order or otherwise been freed from the care, custody, and control of the student's parents.

- (7) "Emergency" means a sudden, urgent occurrence, usually unexpected but sometimes anticipated, that requires immediate action.
- (8) "Mechanical restraint" means the use of any device or equipment to restrict a student's freedom of movement, but does not include:
 - (a) A device implemented by trained school personnel or utilized by a student that has been prescribed by an appropriate medical or related services professional that is used for the specific and approved purposes for which the device was designed;
 - (b) An adaptive device or mechanical support used to achieve proper body position, balance, or alignment to allow greater freedom of mobility than would be possible without the use of the device or mechanical support;
 - (c) A vehicle safety restraint if used as intended during the transport of a student in a moving vehicle;
 - (d) Restraint for medical immobilization; or
 - (e) An orthopedically prescribed device that permits a student to participate in activities without risk of harm.
- (9) "Parent" means a natural parent, a guardian, or an individual acting as a parent in the absence of a parent or a guardian of the student.
- (10) "Physical Restraint" means a personal restriction that immobilizes or reduces the ability of a student to move the student's torso, arms, legs, or head freely, but does not include:
 - (a) Temporary touching or holding of the hand, wrist, arm, shoulder, or back for the purpose of encouraging a student to move voluntarily to a safe location;
 - (b) A behavioral intervention, such as proximity control or verbal soothing, used as a response to calm and comfort an upset student;
 - (c) Less restrictive physical contact or redirection to promote student safety; or
 - (d) Physical guidance or prompting when teaching a skill or redirecting the student's attention.
- (11) "Positive behavioral supports" means a school-wide systematic approach to embed evidence-based practices and data-driven decision-making to:
 - (a) Improve school climate and culture in order to achieve improved academic and social outcomes;
 - (b) Increase learning for all students, including those with the most complex and intensive behavior needs;
 - (c) Encompass a range of systemic and individualized positive strategies to reinforce desired behaviors;
 - (d) Diminish reoccurrence of inappropriate or dangerous behaviors; and
 - (e) Teach appropriate behaviors to students.
- (12) "Prone restraint" means the student is restrained in a face down position on the floor or other surface, and physical pressure is applied to the student's body to keep the student in the prone position.
- (13) "School personnel" means teachers, principals, administrators, counselors, social workers, psychologists, paraprofessionals, nurses, librarians, school resource officers, sworn law enforcement officers, and other support staff who are employed in a school or who perform services in the school on a contractual basis.

- (14) "School resource officer" is defined in KRS 158.441(2).
- (15) "Seclusion" means the involuntary confinement of a student alone in a room or area from which the student is prevented from leaving but does not mean classroom timeouts, supervised in-school detentions, or out-of-school suspensions.
- (16) "Student" means any person enrolled in a preschool, school level as established in 703 KAR 5:240, Section 5, or other educational program offered by a local public school district.
- (17) "Supine restraint" means the student is restrained in a face up position on the student's back on the floor or other surface, and physical pressure is applied to the student's body to keep the student in the supine position.
- (18) "Timeout" means a behavior management technique that is part of an approved program, involves the monitored separation of the student in a non-locked setting, and is implemented for the purpose of calming.

Section 2. (1) Each local school district shall establish policies and procedures that:

- (a) Ensure school personnel are aware of and parents are notified how to access the policies and procedures regarding physical restraint and seclusion;
- (b) Are designed to ensure the safety of all students, school personnel, and visitors;
- (c) Require school personnel to be trained in accordance with the requirements outlined in

Section 6 of this administrative regulation;

- (d) Outline procedures to be followed during and after each use of physical restraint or seclusion, including notice to parents, documentation of the event in the student information system, and a process for the parent or emancipated youth to request a debriefing session;
- (e) Require notification, within twenty four (24) hours, to the Kentucky Department of Education and local law enforcement in the event of death, substantial risk of death, extreme physical pain, protracted and obvious disfigurement or protracted loss or impairment of the function of a bodily member, organ, or mental faculty resulting from the use of physical restraint or seclusion;
- (f) Outline a procedure by which parents may submit a complaint regarding the physical restraint or seclusion of their child, which shall require the district and school to investigate the circumstances surrounding the physical restraint or seclusion, make written findings, and if appropriate, take corrective action; and
- (g) Outline a procedure to regularly review data on physical restraint and seclusion usage and revise policies as needed.

- (2) Each local school district shall revise existing policies or develop policies consistent with this administrative regulation within ninety (90) calendar days of the effective date of this administrative regulation.

Section 3. (1) Physical restraint shall not be used in a public school or educational program:

- (a) As punishment or discipline;
- (b) To force compliance or to retaliate;
- (c) As a substitute for appropriate educational or behavioral support;

- (d) To prevent property damage, except as permitted under KRS Chapter 503;
- (e) As a routine school safety measure; or
- (f) As a convenience for staff.
- (2) School personnel shall not impose the following on any student at any time:
 - (a) Mechanical restraint;
 - (b) Chemical restraint;
 - (c) Aversive behavioral interventions;
 - (d) Physical restraint that is life-threatening;
 - (e) Prone or supine restraint; or
 - (f) Physical restraint if they know that physical restraint is contraindicated based on the student's disability, health care needs, or medical or psychiatric condition.
- (3) Physical restraint may only be implemented in a public school or educational program if:
 - (a) The student's behavior poses an imminent danger of physical harm to self or others and as permitted under KRS 503.050, 503.070, and 503.110;
 - (b) The physical restraint does not interfere with the student's ability to communicate in the student's primary language or mode of communication, unless the student uses sign language or an augmentative mode of communication and the implementer determines that freedom of the student's hands for brief periods during the restraint appears likely to result in physical harm to self or others;
 - (c) The student's physical and psychological well-being is monitored for the duration of the physical restraint;
 - (d) Less restrictive behavioral interventions have been ineffective in stopping the imminent danger of physical harm to self or others, except in the case of a clearly unavoidable emergency situation posing imminent danger of physical harm to self or others; and

School personnel implementing the physical restraint are appropriately trained as required by Section 6(3) of this administrative regulation, except to the extent necessary to prevent physical harm to self or others in clearly unavoidable emergency circumstances where other school personnel intervene and summon trained school personnel as soon as possible.

- (4) When implementing a physical restraint, school personnel shall use only the amount of force reasonably believed to be necessary to protect the student or others from imminent danger of physical harm.
- (5) The use of physical restraint shall end as soon as:
 - (a) The student's behavior no longer poses an imminent danger of physical harm to self or others; or
 - (b) A medical condition occurs putting the student at risk of harm.

Section 4. (1) Seclusion shall not be used in a public school or educational program:

- (a) As punishment or discipline;
- (b) To force compliance or to retaliate;
- (c) As a substitute for appropriate educational or behavioral support;
- (d) To prevent property damage in the absence of imminent danger of physical harm to self or others;

- (e) As a routine school safety measure;
- (f) As a convenience for staff; or
- (g) As a substitute for timeout.
- (2) Seclusion may only be implemented in a public school or educational program if:
 - (a) The student's behavior poses an imminent danger of physical harm to self or others;
 - (b) The student is visually monitored for the duration of the seclusion;
 - (c) Less restrictive interventions have been ineffective in stopping the imminent danger of physical harm to self or others; and
 - (d) School personnel implementing the seclusion are appropriately trained to use seclusion.
- (3) The use of seclusion shall end as soon as:
 - (a) The student's behavior no longer poses an imminent danger of physical harm to self or others; or
 - (b) A medical condition occurs putting the student at risk of harm.
- (4) A setting used for seclusion shall:
 - (a) Be free of objects and fixtures with which a student could inflict physical harm to self or others;
 - (b) Provide school personnel a view of the student at all times;
 - (c) Provide adequate lighting and ventilation;
 - (d) Be reviewed by district administration to ensure programmatic implementation of guidelines and data related to its use;
 - (e) Have an unlocked and unobstructed door; and
 - (f) Have at least an annual fire and safety inspection.

Section 5. (1) All physical restraints and seclusions shall be documented by a written record of each use of seclusion or physical restraint and be maintained in the student's education record. Each record of a use of physical restraint or seclusion shall be informed by an interview with the student and shall include:

- (a) The student's name;
- (b) A description of the use of physical restraint or seclusion and the student behavior that resulted in the physical restraint or seclusion;
- (c) The date of the physical restraint or seclusion and school personnel involved;
- (d) The beginning and ending times of the physical restraint or seclusion;
- (e) A description of any events leading up to the use of physical restraint or seclusion including possible factors contributing to the dangerous behavior;
- (f) A description of the student's behavior during physical restraint or seclusion;
- (g) A description of techniques used in physically restraining or secluding the student and any other interactions between the student and school personnel during the use of physical restraint or seclusion;
- (h) A description of any behavioral interventions used immediately prior to the implementation of physical restraint or seclusion;
- (i) A description of any injuries to students, school personnel, or others;

- (j) A description as to how the student's behavior posed an imminent danger of physical harm to self or others;
 - (k) The date the parent was notified;
 - (l) A description of the effectiveness of physical restraint or seclusion in de-escalating the situation;
 - (m) A description of the school personnel response to the dangerous behavior;
 - (n) A description of the planned positive behavioral interventions which shall be used to reduce the future need for physical restraint or seclusion of the student; and
 - (o) For any student not identified as eligible for services under either Section 504 of the Rehabilitation Act or the Individuals with Disabilities Education Act, documentation of a referral under either law or documentation of the basis for declining to refer the student.
- (2) If the student is not an emancipated youth, the parent of the student shall be notified of the physical restraint and seclusion verbally or through electronic communication, if available to the parent, as soon as possible within twenty-four (24) hours of the incident. If the parent cannot be reached within twenty-four (24) hours, a written communication shall be mailed to the parent via U.S. mail.
- (3) The principal of the school shall be notified of the seclusion or physical restraint as soon as possible, but no later than the end of the school day on which it occurred.
- (4) The physical restraint or seclusion record as outlined in subsection (1) of this section shall be completed by the end of the next school day following the use of seclusion or physical restraint.
- (5) If the parent or emancipated youth requests a debriefing session under Section 2(1)(d) of this administrative regulation, a debriefing session shall be held after the imposition of physical restraint or seclusion upon a student.
- (6) The following persons shall participate in the debriefing session:
- (a) The implementer of the physical restraint or seclusion;
 - (b) At least two (2) of any other school personnel who were in the proximity of the student immediately before or during the physical restraint or seclusion;
 - (c) The parent of an unemancipated student;
 - (d) The student, if the parent requests or if the student is an emancipated youth; and
 - (e) Appropriate supervisory and administrative school personnel, which may include appropriate Admissions and Release Committee members, Section 504 team members, or response to intervention team members.
- (7) The debriefing session shall occur as soon as practicable, but not later than five (5) school days following the request of the parent or the emancipated youth, unless delayed by written mutual agreement of the parent or emancipated youth and the school.
- (8) The debriefing session shall include:
- (a) Identification of the events leading up to the seclusion or physical restraint;
 - (b) Consideration of relevant information in the student's records and information from teachers, parents, other school district professionals, and the student;
 - (c) Planning for the prevention and reduction of the need for seclusion or physical restraint, with consideration of recommended appropriate positive behavioral supports and interventions to assist school personnel responsible for implementing the student's IEP, or Section 504 plan, or response to intervention plan, if applicable, and consideration of whether positive behavioral supports and interventions were implemented with fidelity; and
 - (d) For any student not identified as eligible for services under either Section 504 of the Rehabilitation Act or the Individuals with Disabilities Education Act, consideration of a referral under either law and documentation of the referral or documentation of the basis for declining to refer the student.
- (9) All documentation utilized in the debriefing session shall become part of the student's education record.
- Section 6.** (1)(a) All school personnel shall be trained in state administrative regulations and school district policies and procedures regarding physical restraint and seclusion.
- (b) All school personnel shall be trained annually to use an array of positive behavioral supports and interventions to:
- 1. Increase appropriate student behaviors;
 - 2. Decrease inappropriate or dangerous student behaviors; and
 - 3. Respond to dangerous behavior.
- (c) This training may be delivered utilizing web-based applications.
- (d) This training shall include:
- 1. Appropriate procedures for preventing the need for physical restraint and seclusion, including positive behavioral supports and interventions;
 - 2. State administrative regulations and school district policies and procedures regarding physical restraint and seclusion;
 - 3. Proper use of positive reinforcement;
 - 4. The continuum of use for alternative behavioral interventions;
 - 5. Crisis prevention;
 - 6. De-escalation strategies for responding to inappropriate or dangerous behavior, including verbal de-escalation, and relationship building; and
 - 7. Proper use of seclusion as established in Section 4 of this administrative regulation, including instruction on monitoring physical signs of distress and obtaining medical assistance if necessary.
- (2) All school personnel shall receive annual written or electronic communication from the district identifying core team members in the school setting who have been trained to implement physical restraint.
- (3) A core team of selected school personnel shall be designated to respond to dangerous behavior and to implement physical restraint of students. The core team, except school resource officers and other sworn law enforcement officers, shall receive additional yearly training in the following areas:
- (a) Appropriate procedures for preventing the use of physical restraint except as permitted by this administrative regulation;

- (b) A description and identification of dangerous behaviors that may indicate the need for physical restraint and methods for evaluating the risk of harm in individual situations, in order to determine whether the use of physical restraint is safe and warranted;
- (c) Simulated experience of administering and receiving physical restraint, and instruction regarding the effect on the person physically restrained, including instruction on monitoring physical signs of distress and obtaining medical assistance;
- (d) Instruction regarding documentation and notification requirements and investigation of injuries; and
- (e) Demonstration by core team members of proficiency in the prevention and use of physical restraint.

Section 7. The following data shall be reported by the district in the student information system related to incidents of physical restraint and seclusion:

- (1) Aggregate number of uses of physical restraint;
- (2) Aggregate number of students placed in physical restraint;
- (3) Aggregate number of uses of seclusion;
- (4) Aggregate number of students placed in seclusion;
- (5) Aggregate number of instances of substantial risk of death, extreme physical pain, protracted and obvious disfigurement or protracted loss or impairment of the function of a bodily member, organ, or mental faculty to students related to physical restraint and seclusion;
- (6) Aggregate number of instances of substantial risk of death, extreme physical pain, protracted and obvious disfigurement or protracted loss or impairment of the function of a bodily member, organ, or mental faculty to school personnel related to physical restraint and seclusion; and
- (7) Aggregate number of instances in which a school resource officer or other sworn law enforcement officer is involved in the physical restraint or seclusion of a student. (39 Ky.R. 678; 1207; 1400; eff. 2-1-2013.)

APPENDIX C

JCPS Acceptable Use Policy

The Board of Education supports reasonable access to various information formats for students and believes it is incumbent upon users to utilize this privilege in an appropriate and responsible manner. The JCPS District offers students access to electronic information through the JCPS Networks.

Access is a privilege, not a right.

Students are responsible for appropriate behavior when using the JCPS Networks, just as they are in classrooms and school hallways. Therefore, general school rules for behavior apply. Access to network services is offered to students who agree to act in a considerate and responsible manner, and parent permission is required. Based on the acceptable use guidelines outlined in this section, the system administrators will deem what is inappropriate use, and their decisions are final. The administration and staff may revoke or suspend user access when these terms are violated.

By signing the Acknowledgment of Receipt of the Student Response and Behavior Intervention Handbook and the Student Bill of Rights contained on page 1, the parent/guardian authorizes the district to grant the student access to the JCPS Networks. By the signature of the parent/guardian and the student, the student agrees to abide by the following rules for acceptable use of electronic media. To opt out of the use of the JCPS Networks, the parent/guardian must provide written notice of such opt-out to the school principal.

Students will:

- Use the JCPS Networks for educational purposes, such as conducting research for assignments consistent with the JCPS academic expectations; and
- Use appropriate language, avoiding swearing, vulgarities, and abusive language.

Students will NOT:

- Transmit or receive materials in violation of federal or state laws or regulations pertaining to copyrighted or threatening materials, or transmit or receive obscene or sexually explicit materials;
- Use the JCPS Networks for personal or commercial activities, product promotion, political lobbying, or illegal activities;
- Break into/Attempt to break into another computer network;
- Damage/Attempt to damage, move, or remove software, hardware, or files;
- Use unauthorized multiuser games;
- Send or forward chain letters;
- Download or use unauthorized software products that adversely affect network performance;
- Create or share computer viruses;
- Share access to their JCPS Network account or use another person's account;
- Maliciously attempt to harm or destroy data of another user;
- Use the JCPS Networks to otherwise violate the JCPS Student Support and Behavior Intervention Handbook;
- Use the JCPS Networks to disrupt the efficient operation and/or educational programs of JCPS.

Communications through the JCPS Networks are not private and may be reviewed by JCPS personnel, or by someone appointed by them, to ensure that all guidelines are followed. Violation of these terms will result in a loss of access to the JCPS Networks and may result in other disciplinary action under the guidelines of the JCPS Student Support and Behavior Intervention Handbook.

APPENDIX D

Search and Seizure

Reasonable Suspicion

No pupil's outer clothing, pockets, or his or her personal effects (e.g., handbags, backpacks, etc.) shall be searched by authorized school personnel unless there are reasonable grounds to believe the search will reveal evidence that the pupil has violated or is violating either a school rule or the law.¹ Search of a pupil's person shall be conducted only with the express authority of the Principal/designee.

Authorized Personnel

Searches of a pupil's person or his or her personal effects shall only be conducted by a certified person directly responsible for the conduct of the pupil or the Principal/designee of the school which the student attends. However, when an immediate threat to the health or safety of others occurs off site with no certified employee reasonably available, a non-certified person (i.e., bus driver or coach/sponsor) that is responsible for the students is authorized to conduct the search of a student or his/her personal effects. Examples of immediate threats would include reasonable suspicion of the presence of illegal drugs or a weapon.

Witness/Personal Searches

When a pat down search of pupil's person is conducted, the person conducting the search shall be the same sex as the pupil; and a witness of the same sex as the pupil shall be present during the search. In addition, no search of a pupil shall be conducted in the presence of other students. These restrictions shall not apply to situations involving an imminent threat to students or staff where immediate action is required to prevent harm to health and safety.

Strip Searches

No strip searches of students shall be permitted.



Student Bill of Rights

Student Bill of Rights Preamble

A student has legal rights guaranteed by the Constitution of the United States. These can be exercised in school as long as they do not interfere with the rights of others or the school's responsibility to provide safe and orderly schools. The Jefferson County Public School (JCPS) District encourages each student to balance the expression of his or her rights by honoring his or her responsibilities as outlined in the *Student Support and Behavior Intervention Handbook* and the *Student Bill of Rights*.

Failure To Cooperate

Students who fail to cooperate with school authorities when requested to shall be subject to other disciplinary action.

Regular Inspection

School property, such as lockers, desks, and network systems, technology resources and accounts owned or supplied by the District are jointly held by the school and the pupil. School authorities have the right to conduct general inspection of all such property and resources on a regular basis. During these inspections, items which are school property, such as overdue library books, may be collected. Students should not expect privacy for items and information left in such locations. A single desk, locker or a technology resource/account may be searched if reasonable grounds exist to believe that evidence of a violation of the law or a school rule is contained therein.

Illegal Items

Illegal items (e.g., weapons, drugs, etc.) or other possessions reasonably determined by proper school authorities to be a threat to the pupil's safety or to others' safety and security may be seized by school officials. Other Disruptive Items

Items which may be used to disrupt or interfere with the educational process may be temporarily removed from the pupil's possession by a staff member. Such items may be returned to the pupil by the staff member or through the Principal's office.

Disposition Of Items

All items which have been seized shall be turned over to the proper authorities or returned to the true owner.

References:

1New Jersey vs. T.L.O., 105 S.Ct. 733 (1985)
KRS 161.180; KRS 531.335
Safford Unified School Dist. No. 1 v. Redding, 129 S.Ct. 2633 (2009)

1. The Right to an Education

Under Kentucky law, children between the ages of 5 and 21 years have a right to an education. This education is provided free of charge to students until they have completed a 12-year program or reached their twenty-first birthday. (Children eligible for Exceptional Child Education [ECE] services are guaranteed a Free Appropriate Public Education [FAPE] between the ages of 3 and 21.)

Discipline is necessary to maintain a climate that is conducive to learning, and a student may forfeit his or her right to an education under the *Student Support and Behavior Intervention Handbook*. A student's right to an education will not be taken away without due process, as guaranteed by the Constitution of the United States.

2. The Right to Academic Grades Based on Academic Performance

Academic grades will be assigned based on academic performance. Academic grades will not be reduced as punishment for misconduct. A student is entitled to an explanation of how his or her academic grades were determined.

3. The Right to Make Up Work

A student receiving an excused absence shall have the opportunity to make up missed schoolwork and not have his or her class grades adversely affected for lack of class attendance or class participation due to the excused absence. A student returning to school after an excused absence or suspension may request make-up work within three school days of his or her return to each class. The student will have the number of school days of the absence or suspension plus one school day from the time he or she receives the make-up work to complete the work and submit it to the teacher. ECE students will follow IEP recommendations during this process.

The local School-Based Decision Making (SBDM) Council or, if none exists, the principal, with input from teachers and parents, shall establish rules regarding make-up work for unexcused absences other than suspensions.

4. The Right to Confidentiality of/Access to Student Records

The Family Educational Rights and Privacy Act (FERPA) and KRS 160.700–160.730 guarantee to parents/guardians of students younger than age 18 and to eligible students age 18 and older the right to:

- Inspect and review the student's educational records within 45 days of the day the school receives a request for access.
- Consent to disclosures of personally identifiable information contained in the student's education records, except to the extent that FERPA authorizes disclosure without consent.
- Request an amendment of the student's educational records that the parent or eligible student believes are inaccurate, misleading, or otherwise in violation of the student's privacy rights.
- File with the U.S. Department of Education, Family Policy Compliance Office, 400 Maryland Avenue, S.W., Washington, D.C. 20202-8520, a complaint concerning alleged failures by the district to comply with the requirements of FERPA.

School records of active students are maintained and kept by the school office in a secure location. Records include credits earned, standardized test results, academic portfolios, grade point averages (GPAs), behavioral and psychological evaluations, screening and health records, attendance records, and directory information. The file may contain temporary disciplinary records.

In order to inspect, review, or transfer educational records, the eligible student and/or the parent/guardian must complete the Student Educational Request Form. To request the amendment of educational records, the parent/guardian or eligible student must submit the request in writing to the school principal.

Under the provisions of FERPA, the district may release, without written consent, a student's educational records to school officials with a legitimate educational interest; to other school systems, colleges, and universities to which the student intends to enroll or transfer; and to certain other agencies specified by state and federal law. A school official is a person employed by the district, a person serving on the Board of Education, a person or company with whom the district has contracted as its agent to provide a service instead of using its own employees, or a person serving on an official committee or assisting another school official in performing his or her tasks. A school official has a legitimate educational interest if the official needs to review an educational record in order to fulfill his or her professional responsibility. No other person may inspect, review, or transfer a student's educational records without:

- The written consent of the eligible student;
- The written consent of the parent/guardian if the student is under 18 years of age; or
- A properly issued court order or subpoena.

The district has designated a student's name, address, grade level, honors and awards, photograph (excluding video records), and major field of study as directory information.

The district has also designated a student's date of birth as directory information only for purposes of the U.S. Department of Education Free Application for Federal Student Aid (FAFSA) Completion Project. The district may release directory information without written consent to organizations or individuals with a legitimate educational interest and purpose unless the eligible student and/or parent/guardian submits the Directory Information Opt-Out Form on page 3 to the school office within one month after enrollment each school year. Federal law requires the district to comply with requests from military recruiters for the name, address, and telephone number of secondary school students, unless the student or the parent/guardian opts out of the release of such information to military recruiters.

To opt out of the release of the student's name, address, and telephone number to military recruiters, the student (regardless of age) or parent/guardian must submit the Military Recruiter Opt-Out Form on page 3 to the school office within one month after enrollment. The opt-out request will remain in effect for the entire high school career.

5. Protection of Pupil Rights Amendment

The Protection of Pupil Rights Amendment (PPRA) affords parents and eligible students the right to:

Consent before a student is required to submit to a survey that concerns one or more protected areas ("protected information survey") if the survey is funded in whole or in part by a program of the U.S. Department of Education. These protected areas are as follows:

- Political affiliations or beliefs of the student or student's parent;
- Mental or psychological problems of the student or student's family;
- Sex behavior or attitudes;
- Illegal, antisocial, self-incriminating, or demeaning behavior;
- Critical appraisals of others with whom respondents have close family relationships;

- Legally recognized privileged relationships, such as with lawyers, doctors, or ministers;
- Religious practices, affiliations, or beliefs of the student or parents; or
- Income, other than as required by law to determine program eligibility.

Receive notice and an opportunity to opt a student out of:

- Any other protected information survey, regardless of funding;
- Any nonemergency, invasive physical exam or screening required as a condition of attendance, administered by the school or its agent, and not necessary to protect the immediate health and safety of a student, except for hearing, vision, or scoliosis screenings or any physical exam or screening permitted or required under state law; and
- Activities involving collection, disclosure, or use of personal information obtained from students for marketing or to sell or otherwise distribute the information to others.

Inspect the following items upon request before administration or use:

- Protected information surveys of students;
- Instruments used to collect personal information from students for any of the above marketing, sales, or other distribution purposes; and
- Instructional material used as part of the educational curriculum.

The district will notify parents or eligible students at the start of each school year of the specific or approximate dates of the planned activities or surveys listed above and will provide reasonable notification of activities or surveys planned after the school year begins. The parent or eligible student may opt out of participation in the specific activity or survey. Parents or eligible students who believe their rights have been violated may file a complaint with the Family Policy Compliance Office, U.S. Department of Education, 400 Maryland Avenue, S.W., Washington, D.C. 20202-5901.

6. The Right of Access to Services for All Students With Disabilities/Child Find

A student with a disability will be provided FAPE. Students who are eligible for special education include those students who have hearing impairments, vision impairments, emotional and behavioral disorders, both deafness and blindness, health impairments, specific learning disabilities, mental disabilities, multiple disabilities, speech and language impairments, physical disabilities, autism, developmental delay, or traumatic brain injuries and who, because of these impairments, need special education and related services. Anyone who knows of a child younger than 22 years of age who may have a disability and may need special education is urged to contact a school counselor or the ECE Office at **485-3170**. The JCPS District will contact the parent/guardian to decide if the child needs to be referred for services. The district also will use screening information, student records, and test results collected on all students to help locate students who may need special education. All information collected will be confidential.

7. The Right to Representation and Involvement

A student has the right to be represented by peers in making decisions that affect him or her. These include decisions about standards of achievements, conduct, elections, activities, and other facets of student life. Each student is encouraged to exercise this right by seeking to serve as a Student Council representative, a club officer, or a representative of a school or district committee. In general, any student may make suggestions on matters that affect him or her through the local school's Human Relations Committee and/or Student Council.

8. The Right to Freedom of Expression

A student has the right to freedom of expression as it relates to speech, assembly, appearance, publications, and the circulation of petitions. This right must be exercised in such a way that it does not interfere with the rights of others or the orderly operations of the school. A student is encouraged to form opinions and express them in a responsible manner. Conduct that interferes with the learning process or the orderly operations of a school may be restricted.

- A student has the right to assemble peacefully as long as such assembly does not interfere with the learning process or the orderly operations of the school.
- A student has the right to choose his or her manner of dress and otherwise to arrange his or her own personal appearance subject to the school rules and regulations regarding dress or appearance. However, any such rules must relate to a specific educational purpose, such as health, safety, full participation in classes or school activities, and/or preventing the disruption of the educational process.
- School publications, such as the school newspaper, will be free from censorship or prior restraint. School officials may establish guidelines for school newspapers and other publications, including the restriction of libelous or obscene material or materials that would incite others. Guidelines must be consistent with governing legal standards and with the rules and regulations of the Board of Education. A student involved in any such publication is responsible for knowing his or her legal responsibilities and the consequences for failure to follow the guidelines.
- A student or student group has the right to access the pages of the student newspaper and to distribute leaflets, pamphlets, and other literature on school grounds as long as school regulations for their distribution are followed. The distribution of materials must not interfere with the orderly operations of the school nor violate the rights of others.

9. The Right to Freedom From Abuse

A student has the right to freedom from verbal and/or physical abuse by school staff or other students. Punishments that are cruel and unusual, demeaning, degrading, humiliating, excessive, or unreasonable are prohibited. The use of obscene or abusive language by school staff or students is prohibited. Corporal punishment is prohibited. However, staff may use reasonable physical force to restrain a student for self-defense, to protect others or property, or to maintain order (704 KAR 7:160).

10. The Right to Participate

A student has the right to be a member of a school club or organization as long as he or she meets the criteria for membership. School clubs and organizations must apply criteria for membership to all applicants equally. A student may petition the principal to form a new school club or organization. If the club or organization meets the guidelines of the Jefferson County Board of Education (JCBE), a faculty sponsor will be selected by the principal and students. The students and their faculty sponsor are entitled to use school facilities, including classrooms and the public-address system, as approved by the principal.

11. The Right to Freedom From Unreasonable Search and Seizure of Property*

A student has the right to freedom from unreasonable search and seizure of his or her person and property. School officials, however, have a right under the law to search students or their property whenever there is a reasonable suspicion that they have something that violates school rules or endangers others. Students may be searched to maintain the ongoing educational process, to maintain order, and/or to protect people and property. Searches may include the student and his or her locker, desk, automobile, or personal belongings. A personal search includes a search of a student's accessories (purse, wallet, backpack, cell phone, notebooks, gym bag, etc.) and/or outer garments (pants/skirt pockets, shirt/blouse pockets, pant legs, socks, shoes, jacket pockets, waistband, etc.) that **would not** require disrobing. The Police Detection Canine Team may conduct random and unannounced searches of general school areas, including school lockers and parking lots. A hand-held metal detector may be used by a school official who has reasonable suspicion that the student is in possession of a weapon.

*This section is a summary of the district's student search procedure.

12. The Right to Due Process and Appeal

A student has the right to due process anytime a charge is made against him or her. This means that the student has the right to know what he or she is accused of doing, the right to know the evidence for the charge, and the right to present his or her perspective regarding the charge. The student or parent/guardian has the right to appeal any action taken by the school that he or she believes to be an unfair or inequitable application of the *Student Support and Behavior Intervention Handbook* or the *Student Bill of Rights*. Students and parents/guardians will be informed of these rights at the beginning of the school year or when the student enrolls in school.

The student or parent/guardian must initiate the appeal. He or she should do the following:

1. First, try to resolve the problem by discussing it with the people involved.
2. If that is unsuccessful, he or she should request an informal hearing with the principal/designee. A decision can be expected within five school days. A written decision may be requested.
3. If the student or parent/guardian is not satisfied with the decision, he or she may contact the assistant superintendent at **485-6266**.
4. When appealing a suspension, the appeal must be in writing.

Procedures for appealing suspensions and due process begin on page 33 of the *Student Support and Behavior Intervention Handbook*.

13. The Right to Freedom From Harassment and Discrimination

JCPS has adopted and will follow districtwide policies that forbid harassment and discrimination in providing equal educational opportunities. In cases where a student and/or parent/guardian thinks that a student has been harassed or discriminated against for any reason, the parent/guardian/student must file a written complaint by following the JCBE Discrimination Grievance Procedure. A copy of the procedure and the necessary forms for filing are available in the local school or in the Compliance and Investigations Office.

14. The Right to Know Teacher Qualifications

Our district receives federal funds for Title I and Title II programs as a part of the Every Student Succeeds Act (ESSA). As mandated by ESSA, you have the right to request information regarding the professional qualifications of your child's teacher(s). If you request this information, the district will provide you with the following:

1. Whether the teacher has met the state requirements for licensure and certification for the grade levels and subject matters in which the teacher provides instruction;
2. Whether the teacher is teaching under emergency or other provisional status through which state qualification or licensing criteria have been waived;
3. The baccalaureate degree major of the teacher and any other graduate certification or degree held by the teacher, and the field of discipline of the certification or degree; and
4. Whether your child is provided services by paraeducators, and if so, their qualifications.

You can access information about the professional certification of your child's teacher(s) at <https://wd.kyepsb.net/EPSB.WebApps/KECI/>. If you would like to request our assistance in getting this information, please contact the JCPS Title I/Title II Office by phone at 485-3240. Please be prepared to give your child's name, the name of the school your child attends, the names of your child's teacher(s), and an address or email address where the information may be sent.

Discrimination Grievance Procedure

The following steps are to be followed:

1. Discuss the grievance with the principal of the school.
2. Expect a decision at the end of the informal meeting or within a reasonable time thereafter (five school days).
3. File with the director of Compliance and Investigations a formal written complaint within five school days of the informal decision if the principal's decision is unsatisfactory in resolving the issue.

Compliance and Investigations Office
Jefferson County Public Schools
C. B. Young Jr. Service Center
3001 Crittenden Drive
Louisville, KY 40209-1104
(502) 485-3341

INDEX

Appeal Procedures:	School Resource Officers.....
Appeal Process Chart	Social Emotional Learning
Due Process	Student Search and Seizure.....
District Suspension.....	Teacher Qualifications.....
District Suspension With Recommendation for Referral to Alternative Placement	Suspensions:
Short-Term Suspension	Appeal Procedure for Referral to an Alternative Placement
Attendance/Tuancy Policy.....	Bus Safety.....
Backpack of Success Skills.....	Due Process and Appeal
Bill of Rights.....	Exceptional Child Education Students
Bullying.....	Formal Hearing.....
Bus Safety	Make-Up Work
Cellular Telephones and Telecommunication Devices	Procedures
Climate and Culture	Range of Corrective Strategies
Conference, Parent/Guardian	Section 504 Students
Corporal Punishment	Tobacco Products and Electronic Cigarettes.....
Criminal Violations.....	Trauma-Informed Care
Dangerous Instruments	Unacceptable Behavior Definitions
Deeper Learning.....	Elementary School Behavior and Range of Corrective Strategies.....
Discipline Procedures for Early Childhood Preschool Students.....	Middle and High School Behavior and Range of Corrective Strategies.....
Discrimination.....	Weapons
Distribution	
District Suspensions.....	
Drugs.....	
Due Process.....	
Formal Hearing	
Harassment.....	
High-Yield Pedagogy.....	
Instructional and Behavioral Supports.....	
Make-Up Work.....	
Multi-Tiered Systems of Support.....	
Positive Behavior Interventions and Supports.....	
Possession/Under the Influence	
Progressive Discipline Process	
Range of Corrective Strategies	
Referral to an Alternative Placement	
Removal From the Classroom	
Responsibilities, Student, Staff, Board Members, and Parent/Guardian	
Restorative Practice	
Restraint and Seclusion.....	
Rights:	
Academic Grades.....	
Access to Services	
Assembly.....	
Confidentiality	
Counsel.....	
Dress and Appearance	
Due Process and Appeal	
Education.....	
Freedom From Abuse	
Freedom From Harassment and Discrimination.....	
Freedom From Unreasonable Search and Seizure of Property	
Freedom of Expression.....	
Make-Up Work	
Participate	
Representation and Involvement.....	
School Publications and Censorship	

Questions concerning the *Student Support and Behavior Intervention Handbook* and the *Student Bill of Rights* should be directed to the director of the Office of Student Relations (**485-3335**).

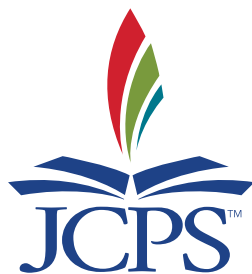


Jefferson County Board of Education

Chairperson, Diane Porter
Vice-Chairperson, Lisa Willner

Chris Brady
Linda Duncan
Benjamin Gies
Stephanie Horne
Chris Kolb

Superintendent
Dr. Martin "Marty" Pollio



www.jefferson.kyschools.us

Equal Opportunity/Affirmative Action Employer
Offering Equal Educational Opportunities

61443 JCPS SSBI Handbook 6/19 dw

If you need assistance in reading or understanding any part of this communication, please contact your child's school for language support. The school will schedule a professional interpreter in person or over the phone to provide oral translation