



# Annual Gap Goal Report: *TK Stone Middle School*

Elizabethtown Independent Schools



# Closing the Achievement Gap

*By 2019, increase student achievement with African American and Disability subgroups at TKS the amount needed to meet the state defined cut scores within the Kentucky School Accountability System.*

# Extended School Services (ESS)

- An increasing number of students are attending ESS, especially in the morning
- Teachers are becoming more intentional in targeting students needing additional help and mandating ESS attendance.
- ESS is offered Monday - Friday in the morning and Tuesday/Thursday in the afternoon

# Gap Mentorship Program

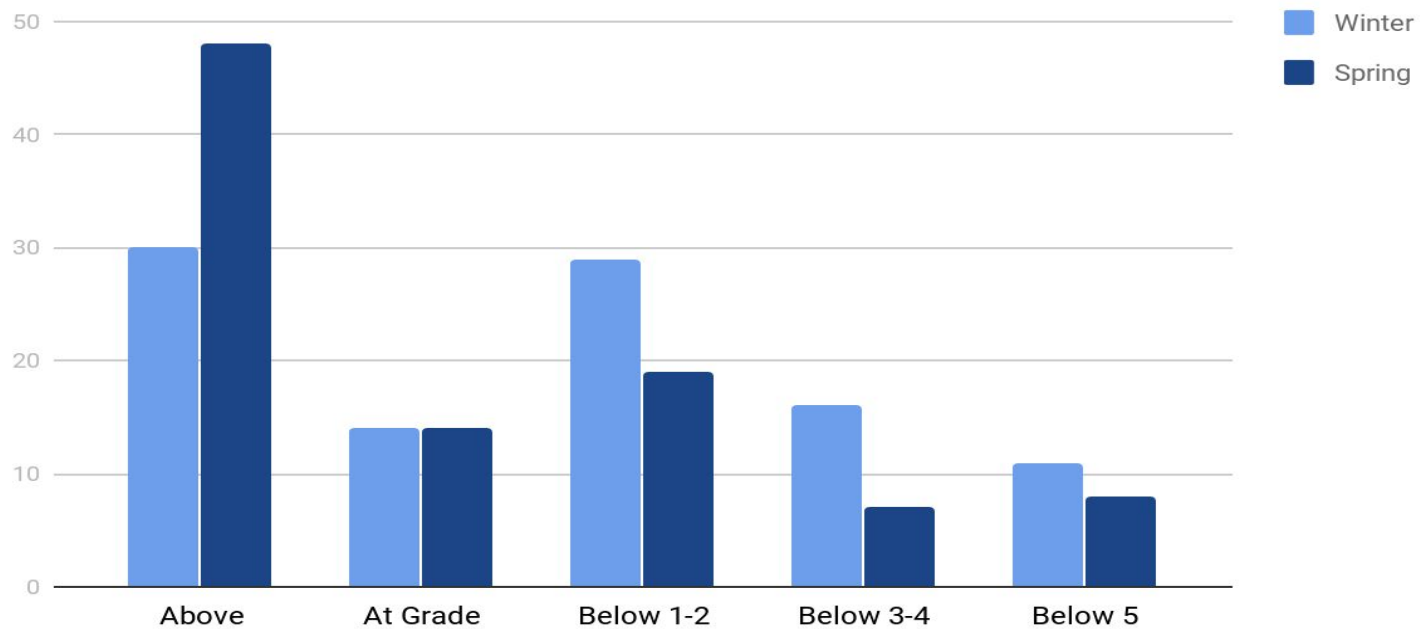
- Targets 8-10 male students and provides social, emotional, and classroom supports
- David Ricks, a member of the Phi Sigma Beta fraternity, provides monthly support for these students.

# Reading Plus

- Computerized program continues to improve school wide average level gain (ALG) of 3.5
- 2019-2020 - All incoming 6th graders will have an additional reading AND math class (unless they choose band or chorus)
- 2019-20 - All incoming 7th graders can choose either an additional reading or math class

## 2018-19 School Wide Average Level Gain (ALG) with Reading Plus

Points scored





# Improvement Plan Strategies

# Next steps

## Strategy 1

ESS Waiver for Math and Reading

- Provides two part time certified personnel for small group/individualized instruction targeting math and reading

## Strategy 2

Additional ESS morning tutor in the library

- With increasing ESS enrollment, students having primarily math and technology needs can be assisted in the library by a certified instructor.



# Next Steps (con't)

## Strategy 3

- All teachers will complete a 2019-20 curriculum pacing guide (fall/spring semester) to include essential vocabulary for each unit.
- This pacing guide will allow special education teachers to “pre-teach” vocabulary to students before new content is introduced in the regular classroom
- The pacing guide will also assist special education teachers in identifying main ideas and themes to reinforce with students.

# Next Steps (con't)

## Strategy 4

- Station teaching in Math/ELA Extensions and Math/ELA Strategies classes.
- This spring, two math classes completed a pilot “station teaching” curriculum. Instructional assistants were placed with these teachers to provide small group instruction 10-15 minutes two times per week.