



Thelma B. Johnson
Early Learning Center

Council of Councils

Brigance Data

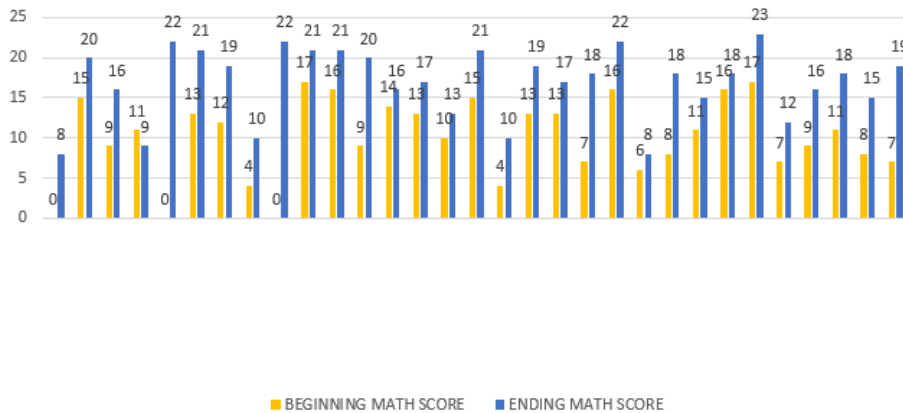
Domain	Henderson County Averages 18-19	Kentucky Averages 18-19
Overall Brigance Scores	52.8%	51.1%
Academic/Cognitive	38.4%	36.0%
Language Development	77.9%	73.8%
Physical Development	47.8%	48.2%
Self-Help	46.2%	51.8%
Social-Emotional	70.7%	77.3%

Teaching Strategies GOLD Data

	Fall 2017/18	Winter 2017/18	Spring 2017/18	Fall 2018/19	Winter 2018/19	Projected Spring 2018/19
Social-Emotional	52.75	79.57	81.13	26.16	80.39	83.05
Physical	75.82	87.10	91.51	51.39	90.57	94.97
Language	51.65	72.05	75.47	36.81	76.10	79.84
Cognitive	49.45	75.27	81.13	28.24	76.53	82.25
Literacy	42.86	75.27	83.02	22.69	78.51	84.36
Math	40.66	72.05	79.57	11.57	60.67	69.67

21st Century Data

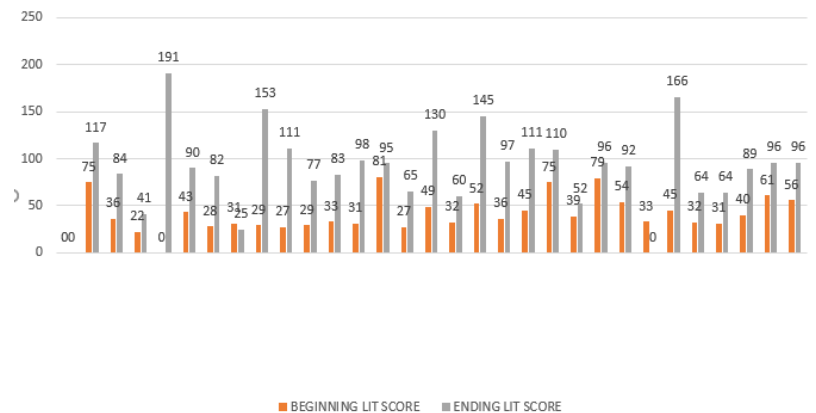
Math Scores



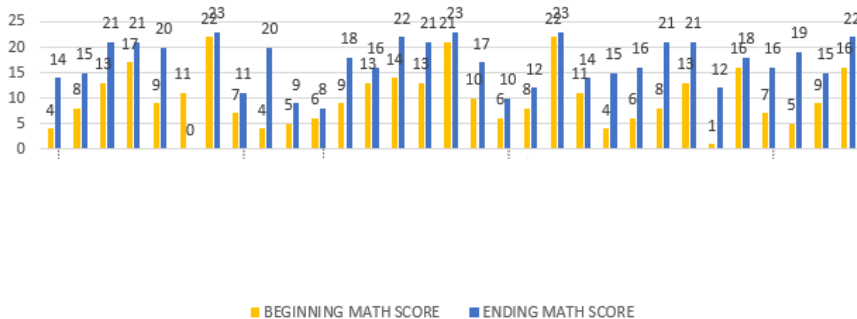
Session #1
Math Scores

Session #1
Literacy Scores

Lit Scores



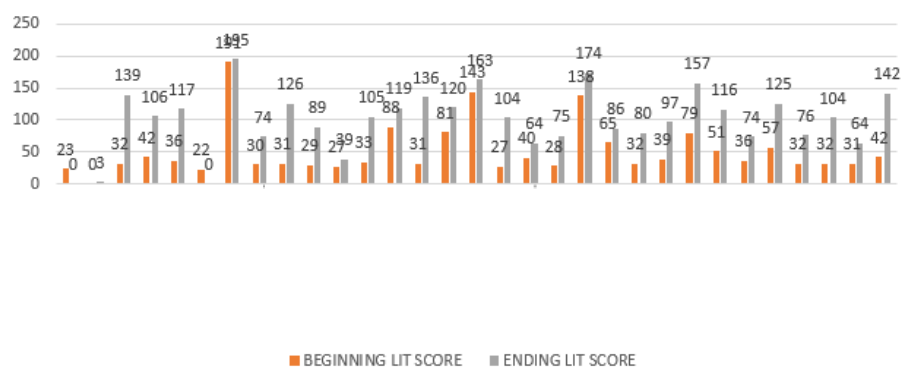
MATH SCORES



Session #2
Math Scores

Session #2
Literacy Scores

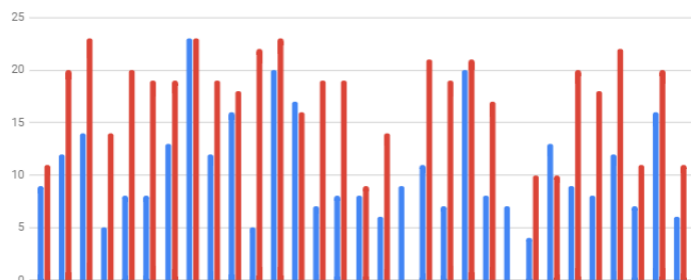
LIT SCORES



Community Partnership Data

Pre/Post Math KT

■ Pre-Math ■ Post-Math

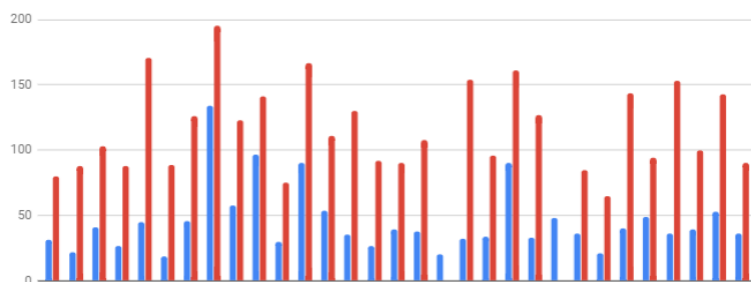


Ms. Kelsie
Math Scores

Ms. Kelsie
Literacy Scores

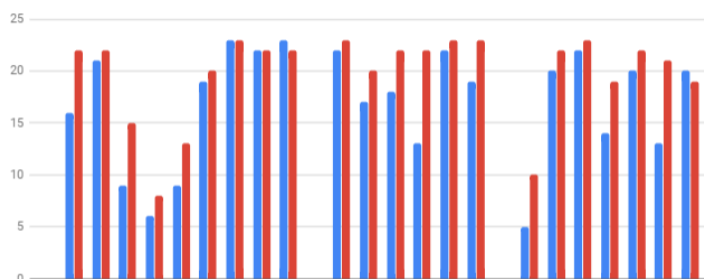
Pre/Post Literacy KT

■ Pre-Literacy ■ Post-Literacy



Pre/Post Math Scores JV

■ Pre-Math ■ Post-Math

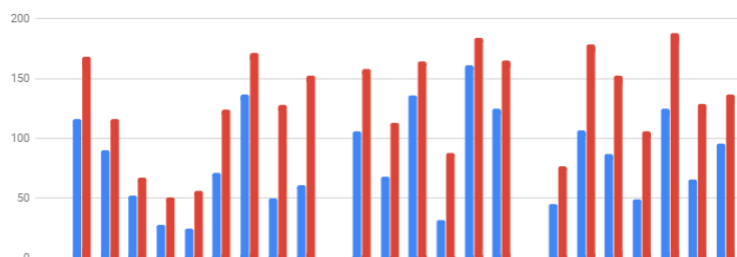


Ms. Jayme
Math Scores

Ms. Jayme
Literacy Scores

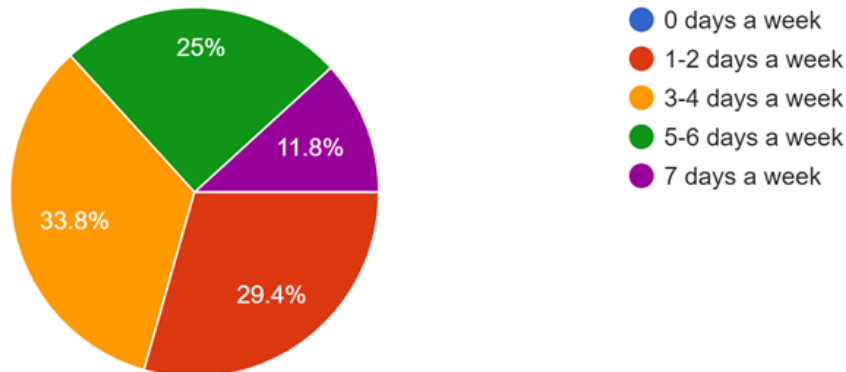
Pre/Post Literacy Scores JV

■ Pre-Literacy ■ Post-Literacy

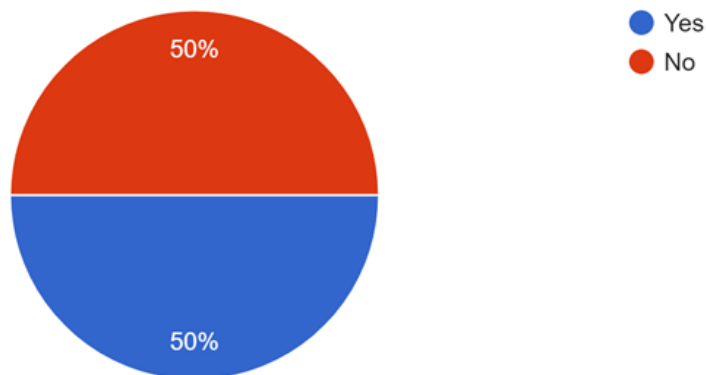


Reading Survey

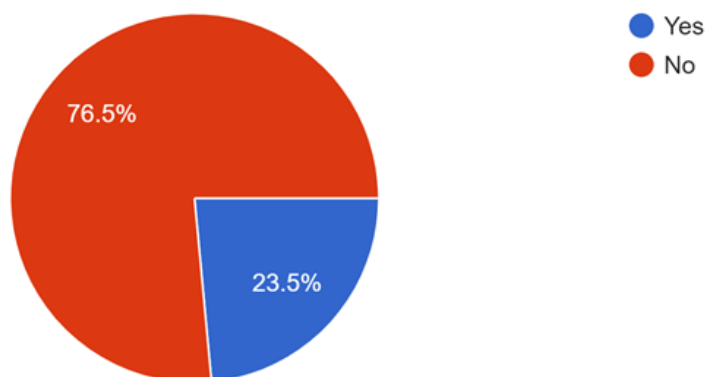
In a typical week, how often does someone (outside of childcare or preschool) read with your preschooler for at least 20 minutes per day?



Is your preschool child or their younger siblings enrolled in Imagination Library?



In the past year, have you participated in any groups, classes, or workshops for parents?



ACE Data

ACE Questions

1. Did a parent or other adult in the household often or very often.... Swear at you, insult you, put you down, or humiliate you? Or Act in a way that made you afraid that you might be physical hurt?

Yes: 66

2. Did a parent or other adult in the household often or very often..... Push, grab, slap, or throw something at you? Or Ever hit you so hard that you had marks or were injured?

Yes: 40

3. Did an adult or person at least 5 years or older than you ever...Touch or fondle you or have you touch their body in a sexual way? Or Attempt or actually have oral, anal, or vaginal intercourse with you?

Yes: 50

4. Did you often or very often feel that.... No one in your family love you or thought you were important or special? Or Your family didn't look out for each other, feel close to each other, or support each other?

Yes: 56

5. Did you often or very often feel that....You didn't have enough to eat, had to wear dirty clothes, and had no one to protect you? Or Your parents were too drunk or high to take care of you or take you to the doctor if you needed it?

Yes: 20

6. Was a biological parent ever lost to you through divorce, abandonment, or other reason?

Yes: 166

ACE Data

7. Was your mother or stepmother: Often or very often pushed, grabbed, slapped, or had something thrown at her? Or Sometimes, often, or very often kicked, bitten, hit with a fist, or hit with something hard? Or Ever repeatedly hit over at least a few minutes or threatened with a gun or knife.

Yes: 37

8. Did you live with anyone who was a problem drinker or alcoholic, or who used street drugs?

Yes: 85

9. Was a household member depressed or mentally ill, or did a household member attempt suicide?

Yes: 69

10. Did a household member go to prison?

Yes: 38

Total completed: 309

99 parents (32%) have an ACE score of 4 or higher

Family Events

Event	Event Information	Average Attendance
Summer Reading in the Park	12 Sessions in June and July	55 per session
Parent Orientation	6 Session times offered	All parents are required to attend
Meet and Greet	Evening Event	1,210
Harvest Hoedown	Saturday Event	539
Winterfest	Saturday Event	357
4C Play and Learn	Meets every Friday that school is in session (32 sessions total)	22 per session
Family STEAM Night	Evening Event	328
Sweetheart Dance	Evening Event	412
Watch DOGS Launch	Evening Event	90



Grants 2018-2019

Grant	Amount Awarded
National 21st Century	\$150,000.00
PPG Community Partnerships Continuation	\$150,000.00
Preston Family Foundation for Scholarships	\$50,000.00
International Paper	\$9,000.00
STEM Lab Grant	\$7,300.00

Total Amount awarded: \$366,300.00



Enrollment Trends

Enrollment as of December 1:

2014- 362

2015- 391

2016- 407

2017- 465

2018- 468

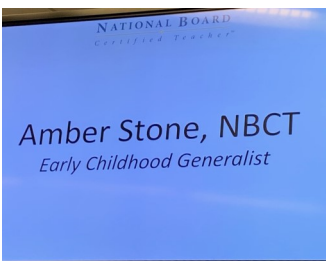
Enrollment at Thelma B. Johnson Early Learning Center has grown 29% since 2014.

Other great things.....

Henderson County Early Childhood Council

- \$4,500.00 for Imagination Library in Henderson County
- \$4,000.00 to provide training for local childcare centers staff
- \$4,000.00 for math and literacy materials for community childcare centers
- \$1,500.00 for Henderson Leadership Initiative Fee
- \$1,910.00 for Literacy nights and Summer Reading Program
- \$1,000.00 for attendance to CECC Conference

(In Kind: \$3,200.00 for staff time and materials to make these programs successful in our community)



**National Board Certified Teacher
Ms. Amber Stone**



Push In: 86 groups (30 minutes each) will be completed by the end of the 2018-2019 school year for a total of 43 hours spent in the classroom

Social Emotional Learning Groups

Challenges



Monday
Tuesday
Wednesday
Thursday

Supporting Student and Families social emotional and mental health needs

Teaching to the Human Core Roni Habib @Roni_Habib EQ Schools

Always remember... Why am I doing this in the first place?

HAPPINESS – when people are HAPPIER they learn in a much deeper way. 😊 ⇒ 💡

INVEST in connections & relationships

celebrate FAILURE with your students

Mindful Listening
90% of communication is paying attention to what's not said
the emotions behind the words

Attune to your students

7 non verbal signals

- 1 eye contact
- 2 facial expression
- 3 tone of voice
- 4 posture
- 5 gesture
- 6 timing
- 7 intensity

Relationships above all else.

Custody issues, Incarceration, relatives as parents, being called to court for one side or the other