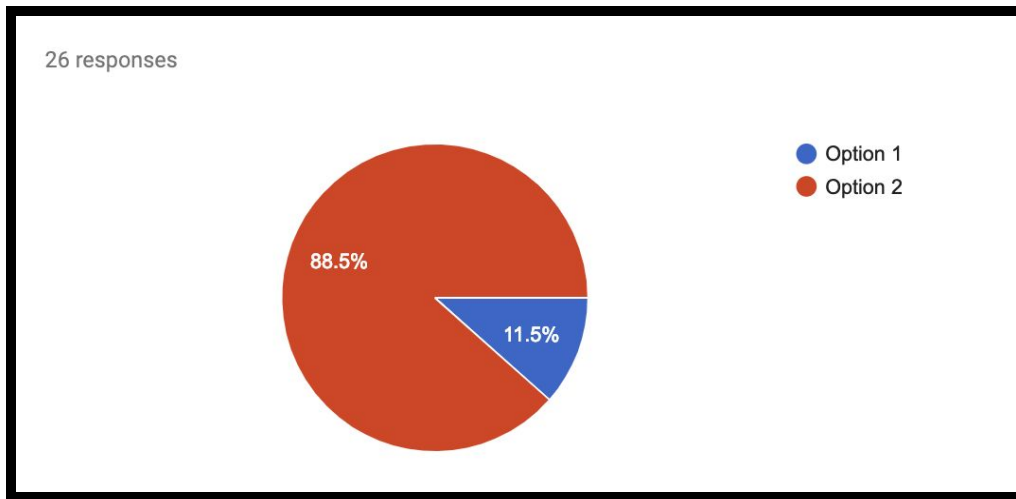
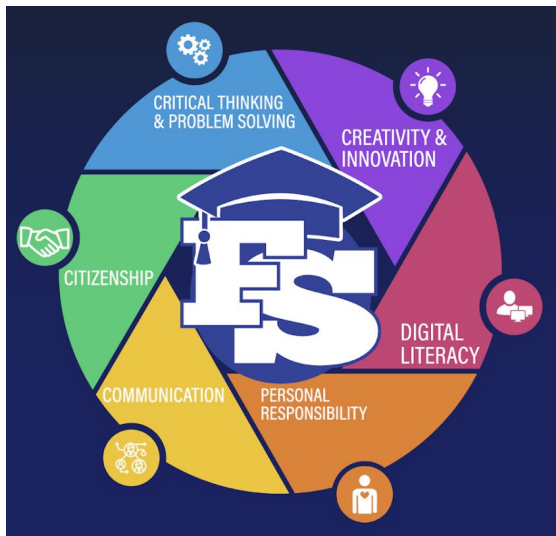


Profile of a Graduate Update

On February 11, 2019, Joint SBDM members met at Franklin Simpson High School to discuss Simpson County Schools Profile of a Graduate Initiative. Members of the SBDM voted on a visual to represent the six competencies that a Franklin Simpson High School Graduate exemplifies.

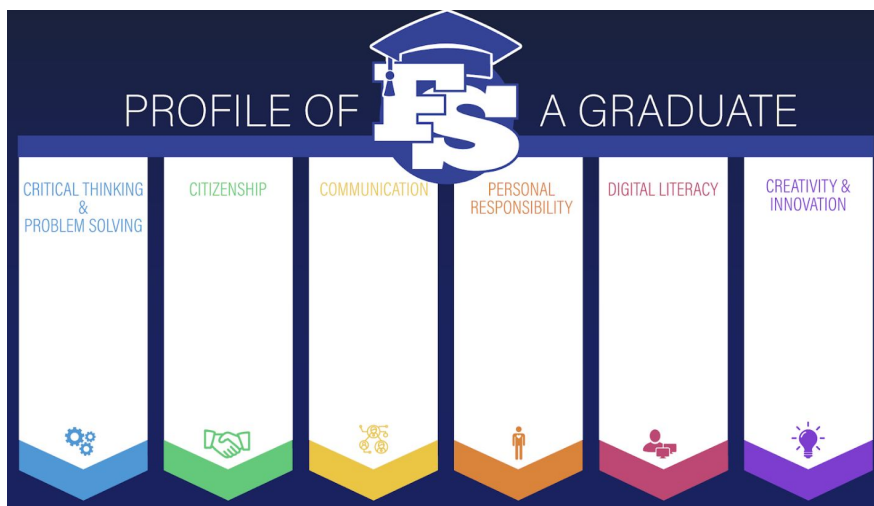


The following image that was chosen as Simpson County Schools Profile of A Graduate.



Next Steps:

- ❖ Work with the SCS Instructional Leadership Team to synthesize and identify three components for each competency.
- ❖ The three identified components for each competency will be placed on our SCS Strategic Implementation Plan. SCS Leadership will ensure the components are being addressed at each school.



- ❖ Host a community forum for stakeholders to provide feedback on the visual representation and to present the competencies.