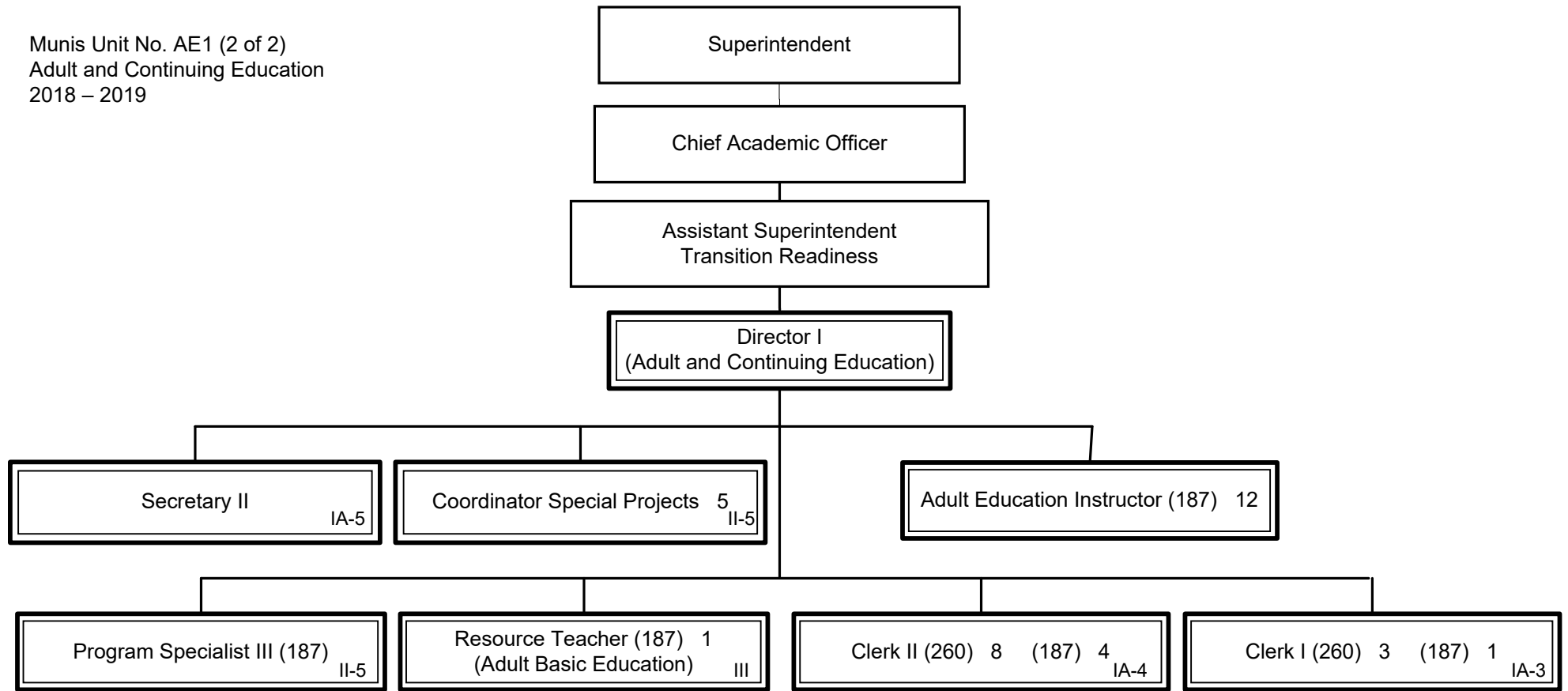


Summary:

General Fund Positions: 0
Categorical Fund Positions: 35

E-9
E-12 (1 of 2)

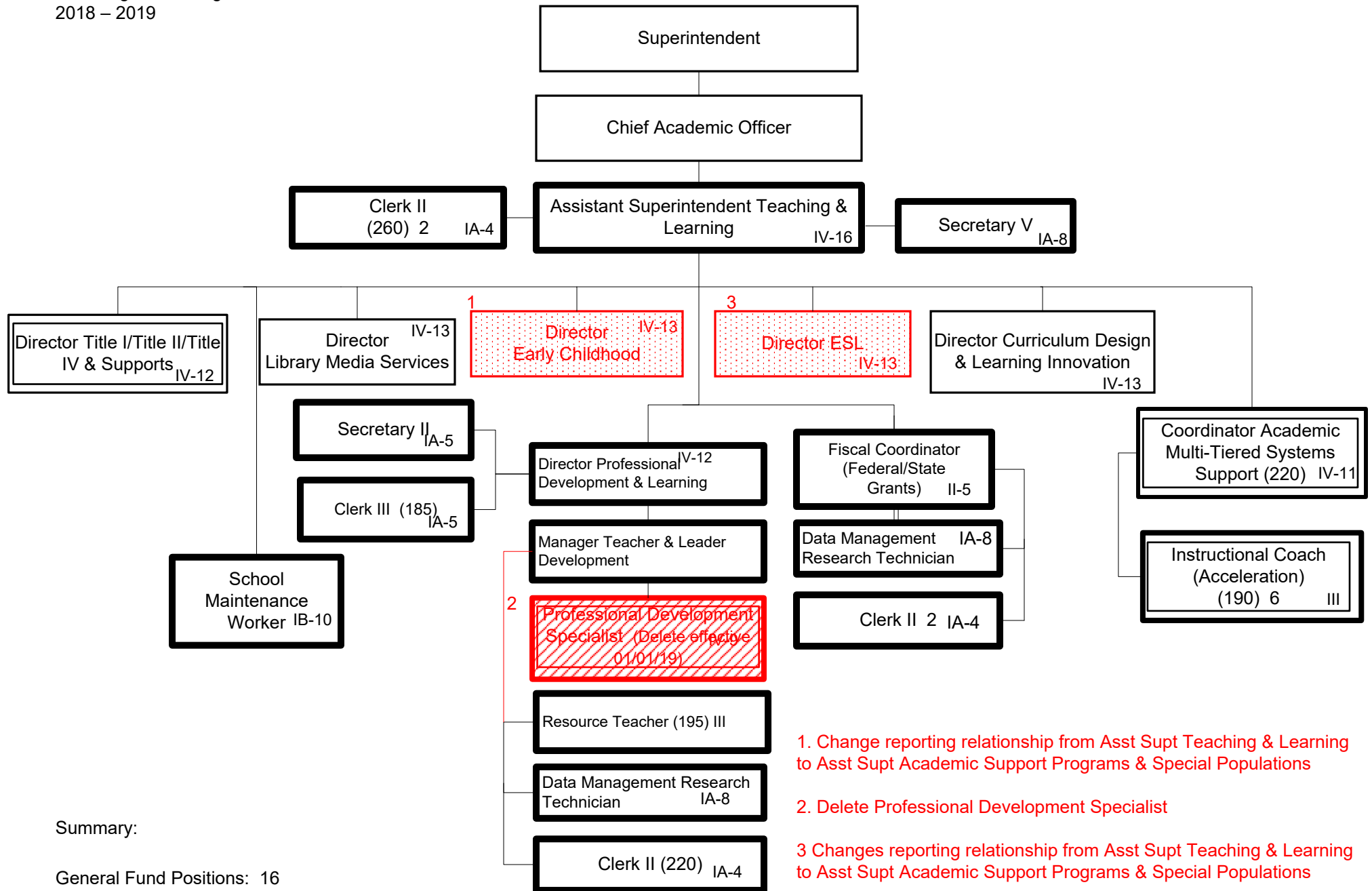
02/12/19
Submitted 5/08/18
Effective 7/01/18



Summary:

General Fund Positions: 0

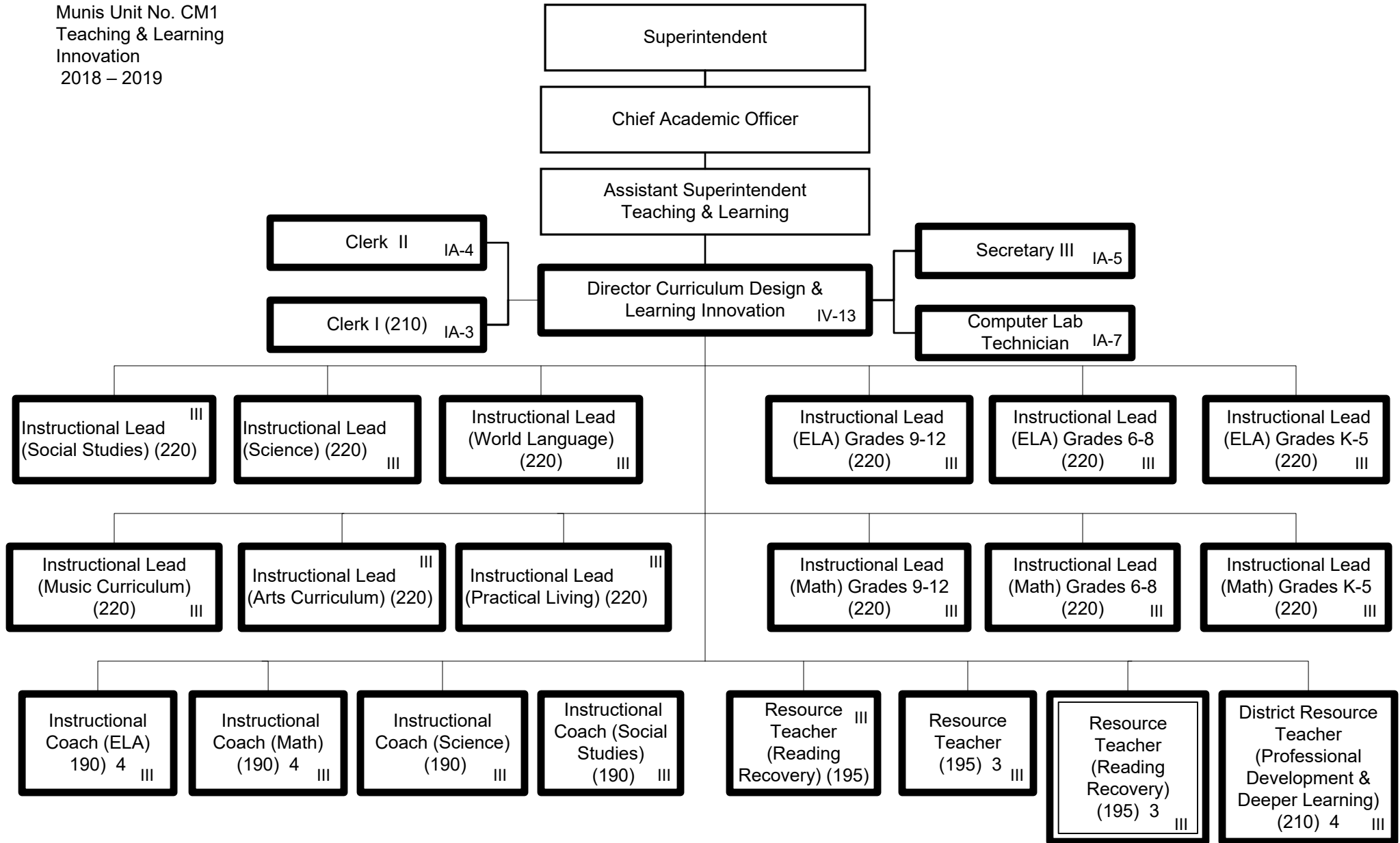
Categorical Fund Positions: 37



Summary:

General Fund Positions: 16
Categorical Fund Positions: 8 7
(Change effective 01/01/19)

1. Change reporting relationship from Asst Supt Teaching & Learning to Asst Supt Academic Support Programs & Special Populations
2. Delete Professional Development Specialist
- 3 Changes reporting relationship from Asst Supt Teaching & Learning to Asst Supt Academic Support Programs & Special Populations

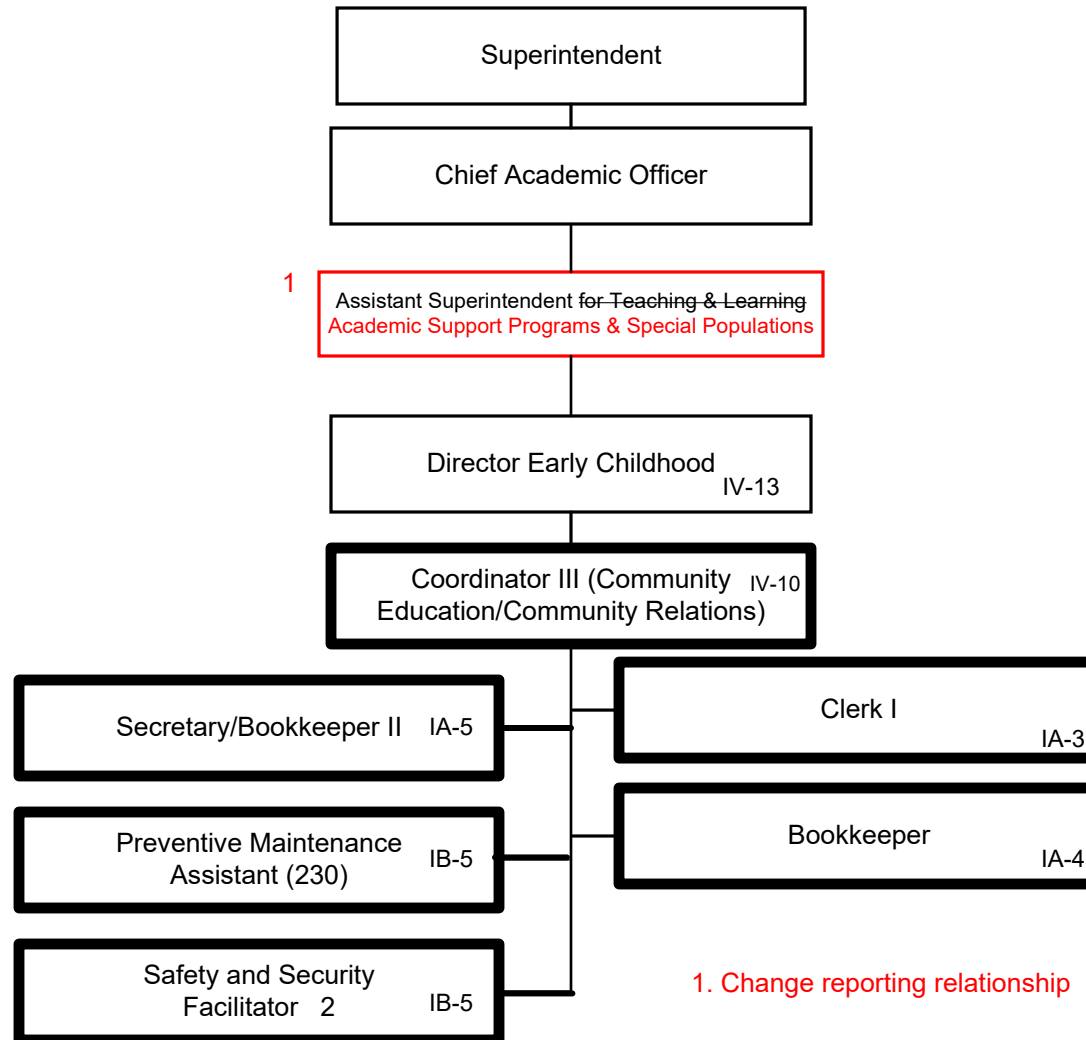


Summary:

General Fund Positions: 35
Categorical Fund Positions: 3

E-7
E-10

02/12/19
Submitted 6/12/18
Effective 7/01/18

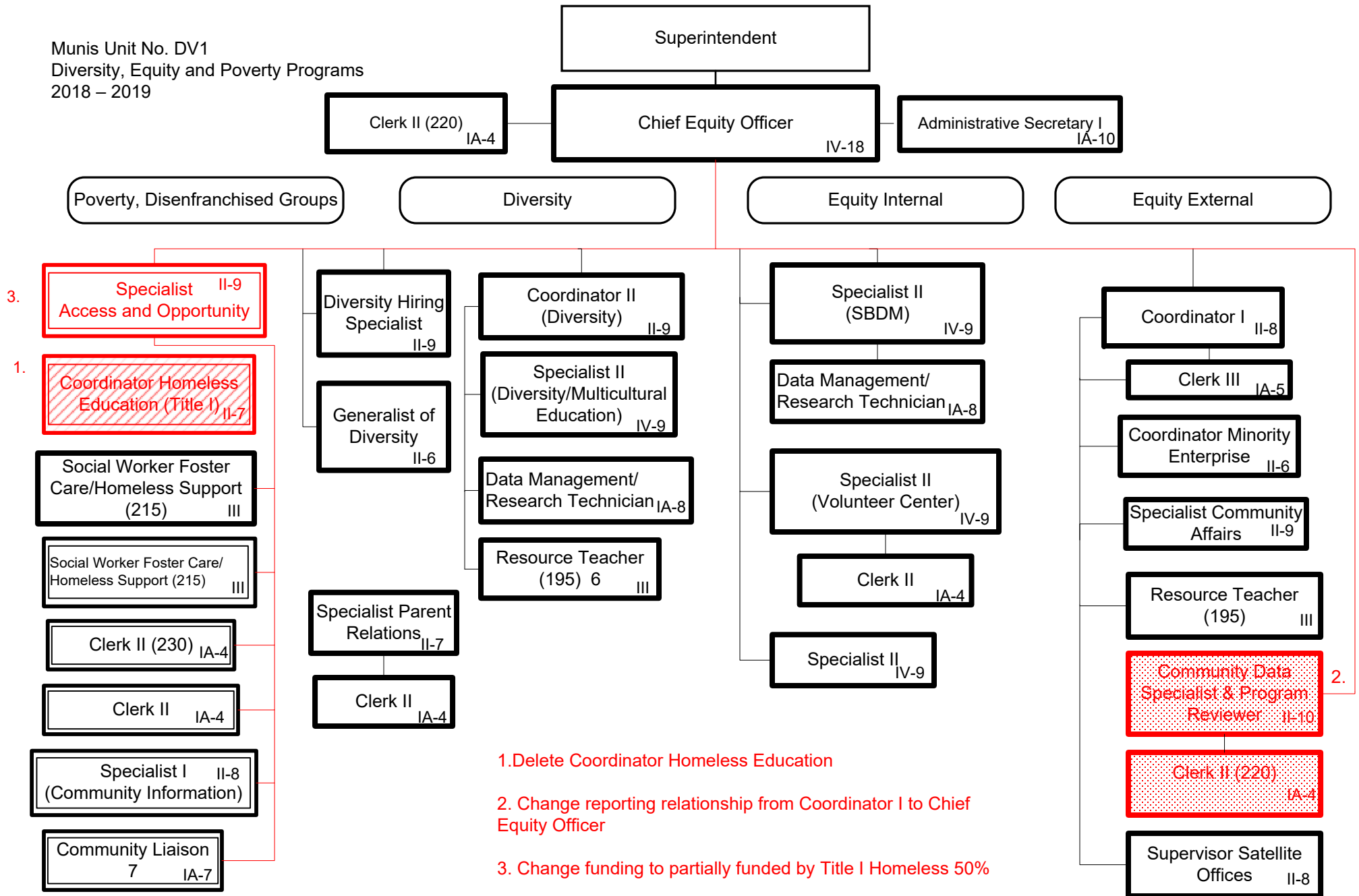


Summary:

General Fund Positions: 7
Categorical Fund Positions: 0

E-14
E-8

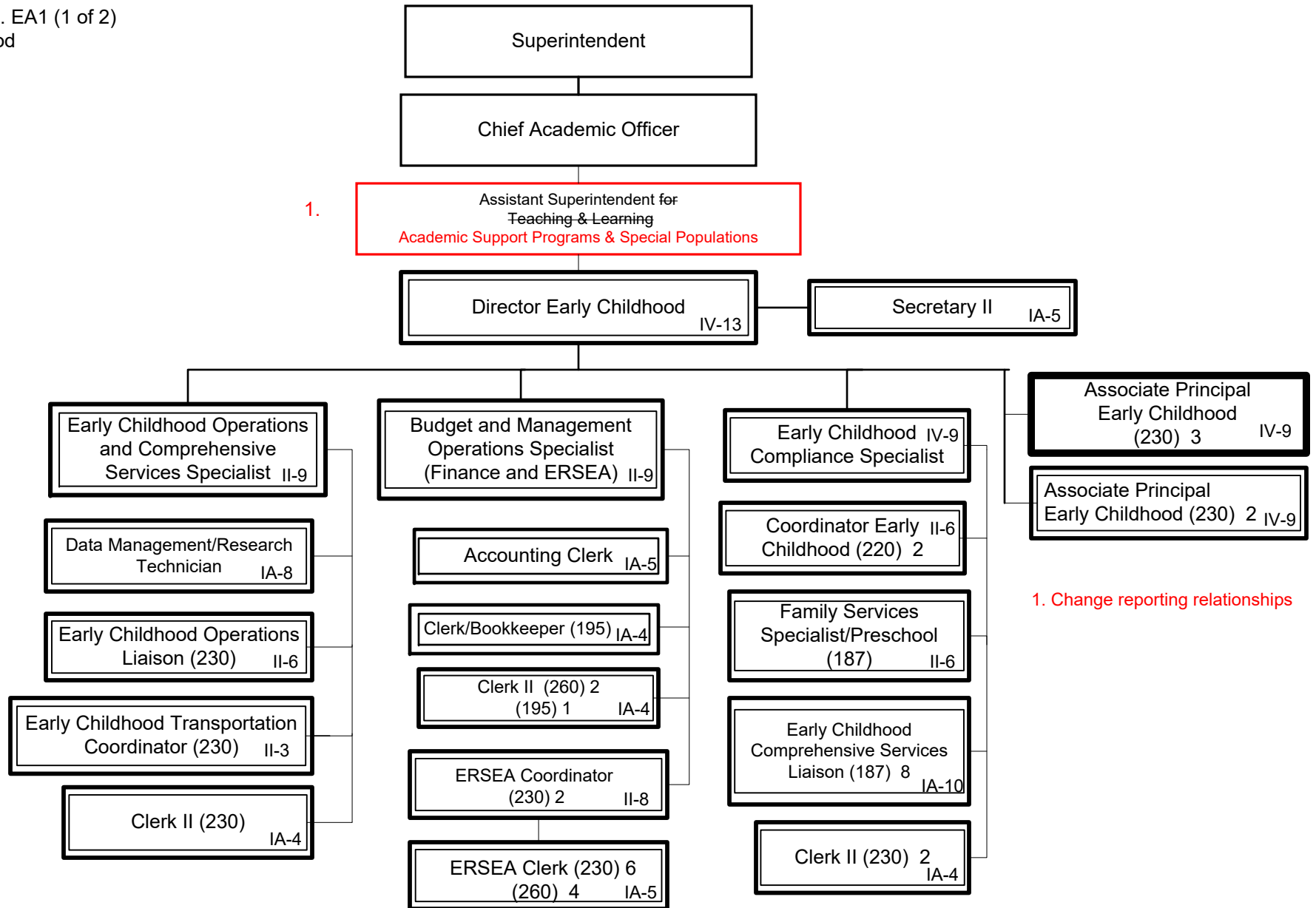
02/12/19
Submitted 4/24/18
Effective 7/01/18



Summary:

General Fund Positions: 28-27
Categorical Fund Positions: 12

2/12/19
10/30/18

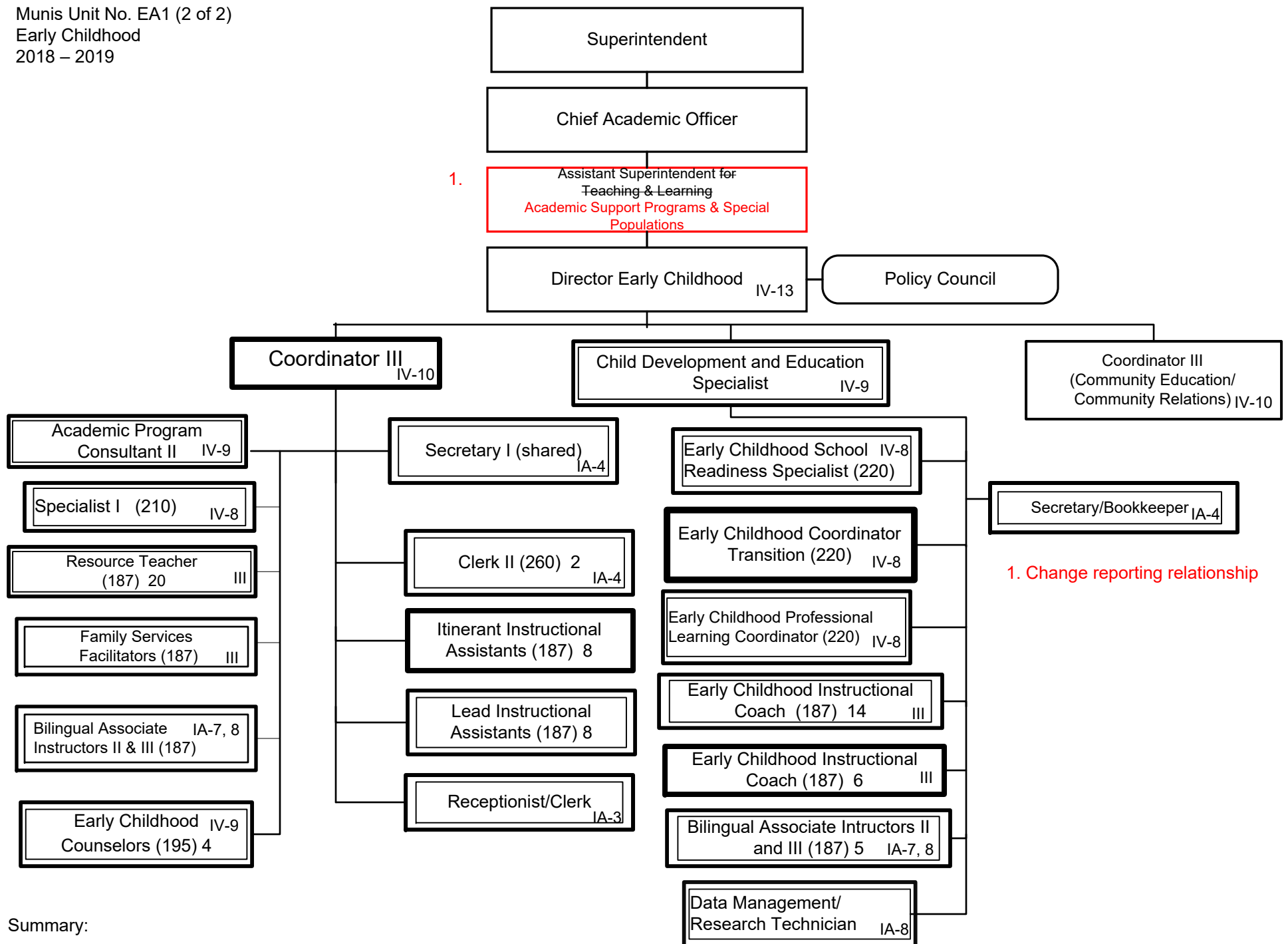


Summary:

General Fund Positions: 3
Categorical Fund Positions: 41

E-13 (1 of 2)
E-7 (1 of 2)

02/12/19
10/16/18

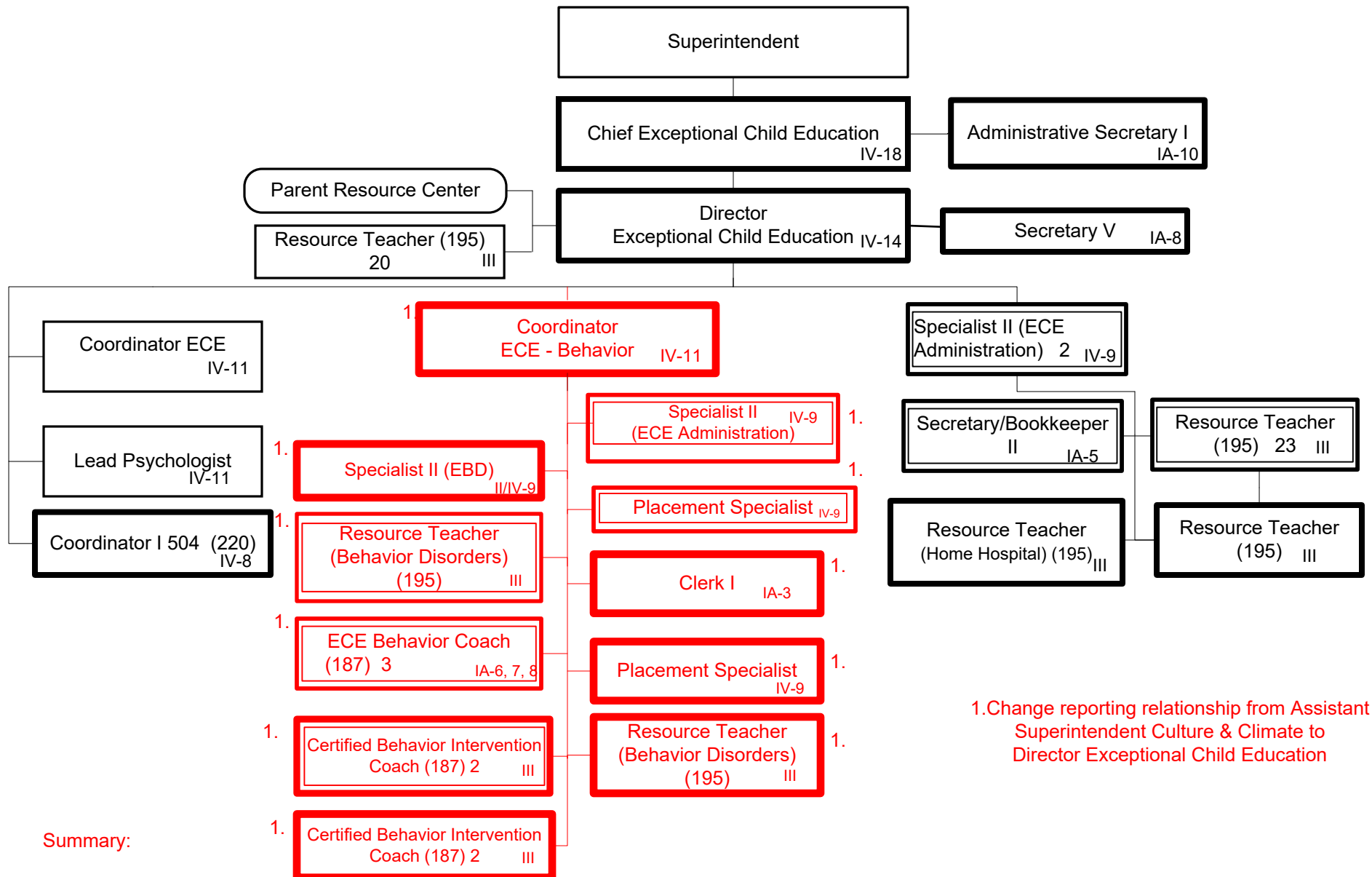


Summary:

General Fund Positions: 16
Categorical Fund Positions: 64

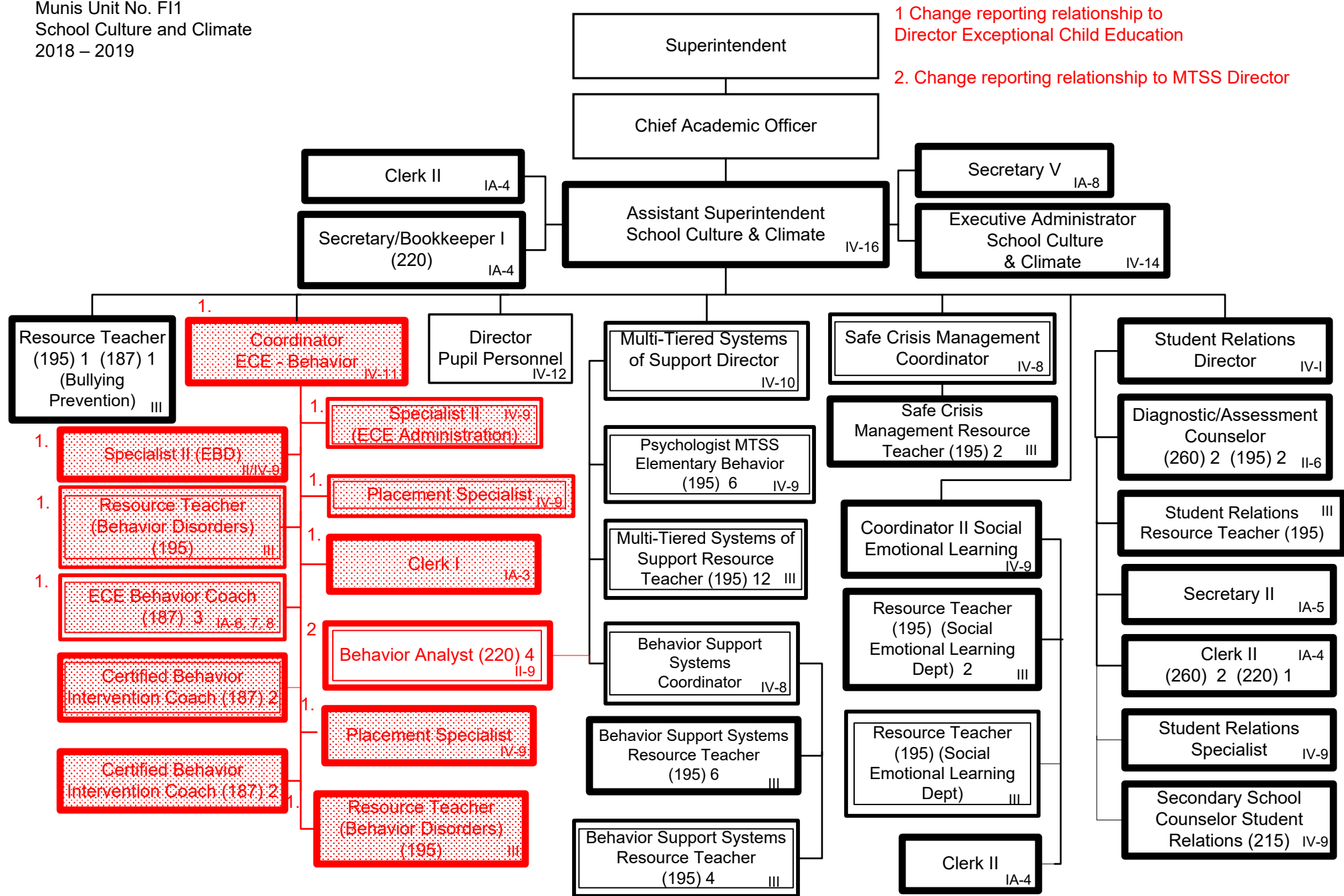
E-13 (2 of 2)
E-7 (2 of 2)

02/12/19
7/24/18



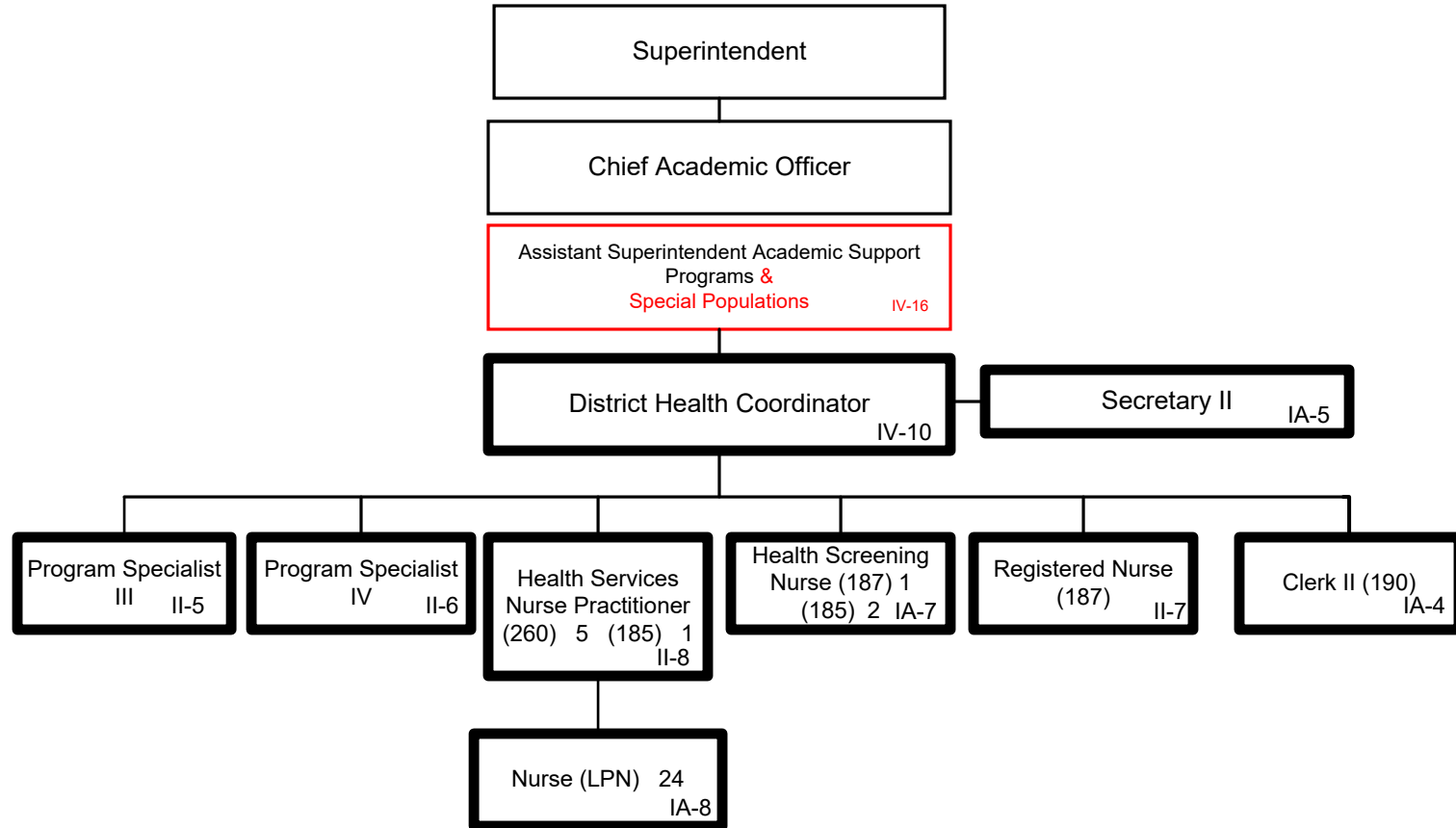
General Fund Positions: 7 14
 Categorical Fund Positions: 26 34

1.Change reporting relationship from Assistant Superintendent Culture & Climate to Director Exceptional Child Education



Summary:

General Fund Positions: 36- 29
Categorical Fund Positions: 38 30

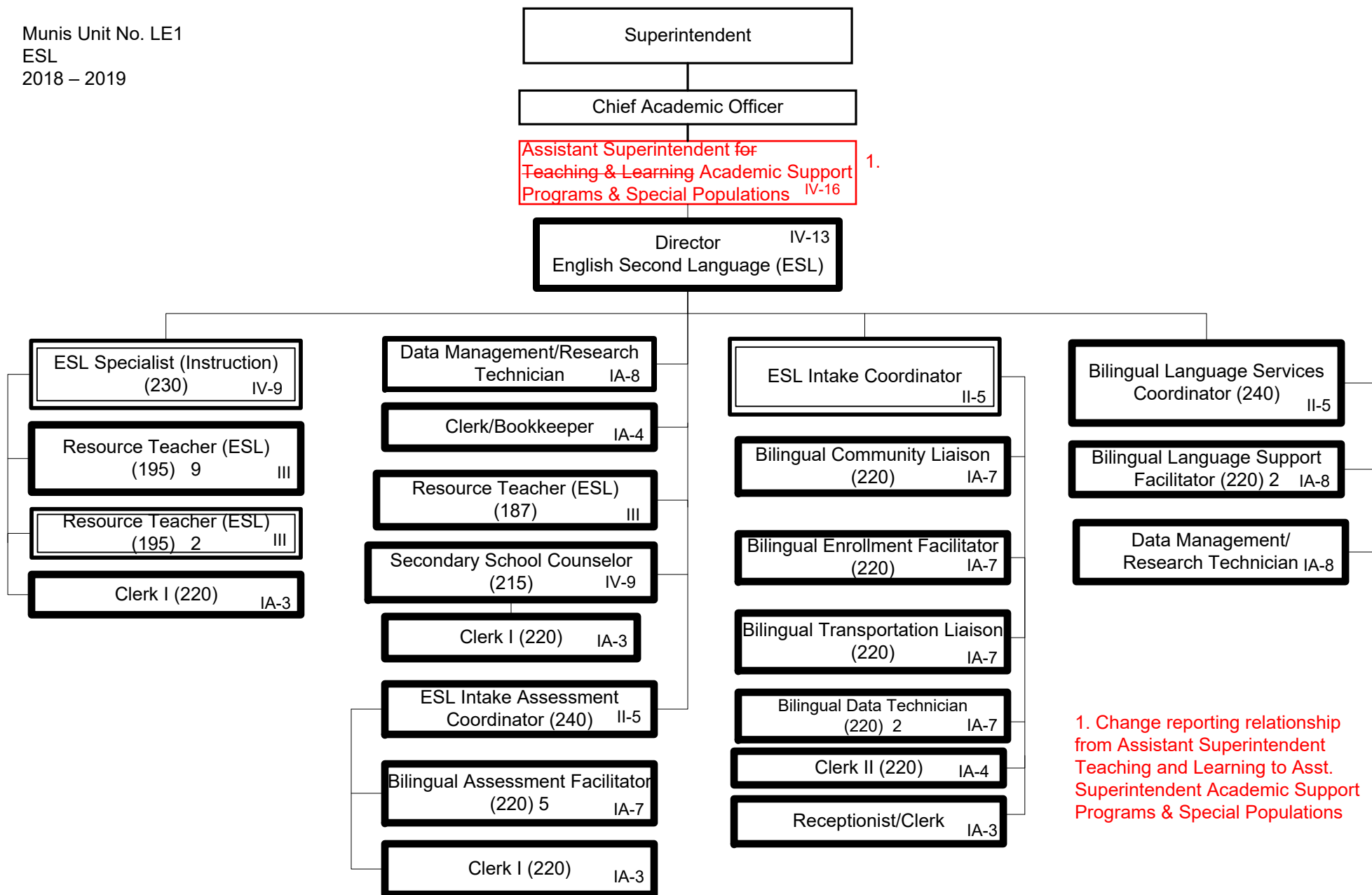


Summary:

General Fund Positions: 39
Categorical Fund Positions: 0

E-11
E-14

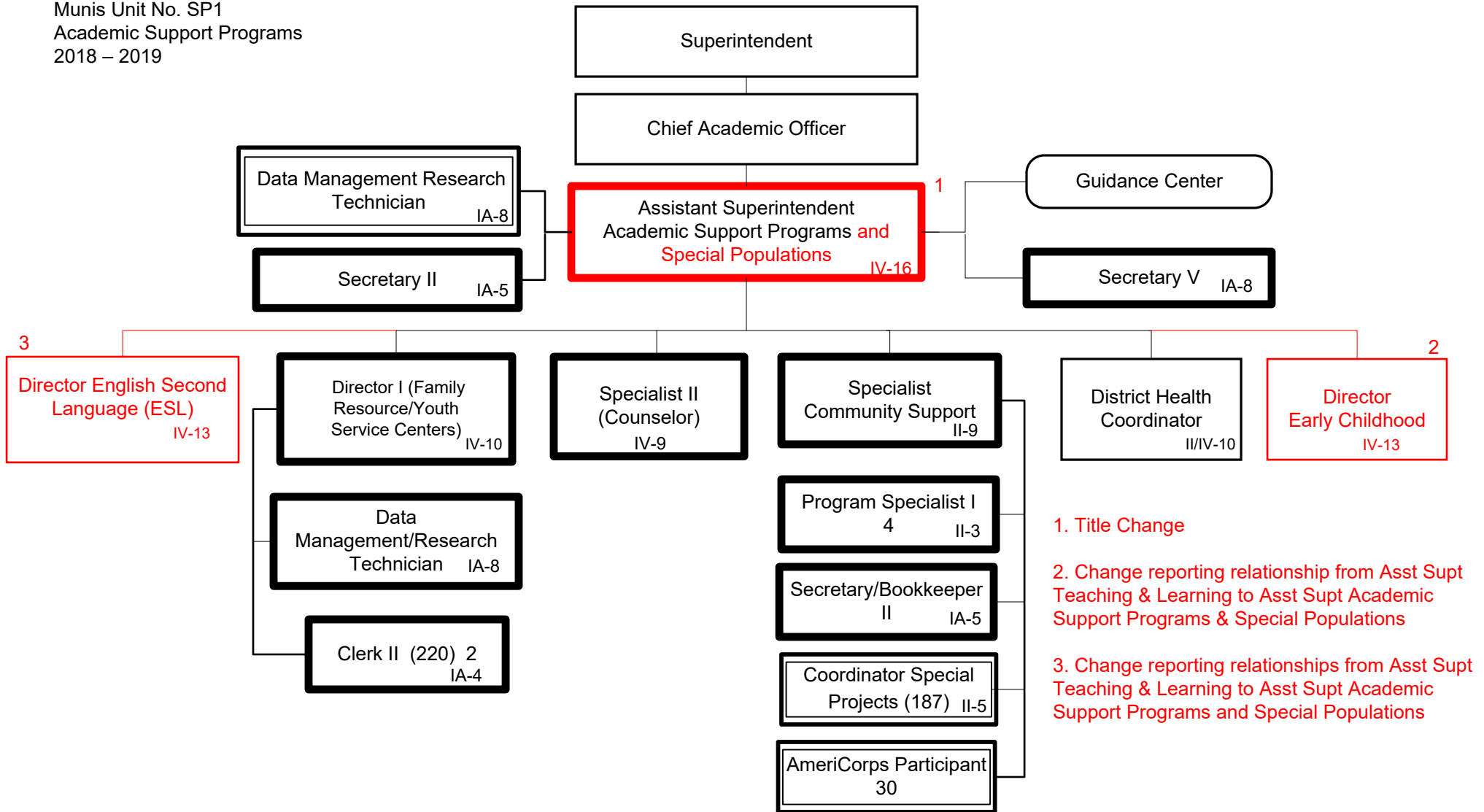
02/12/19
07/25/17



1. Change reporting relationship from Assistant Superintendent Teaching and Learning to Asst. Superintendent Academic Support Programs & Special Populations

Summary:

General Fund Positions: 34
Categorical Fund Positions: 4

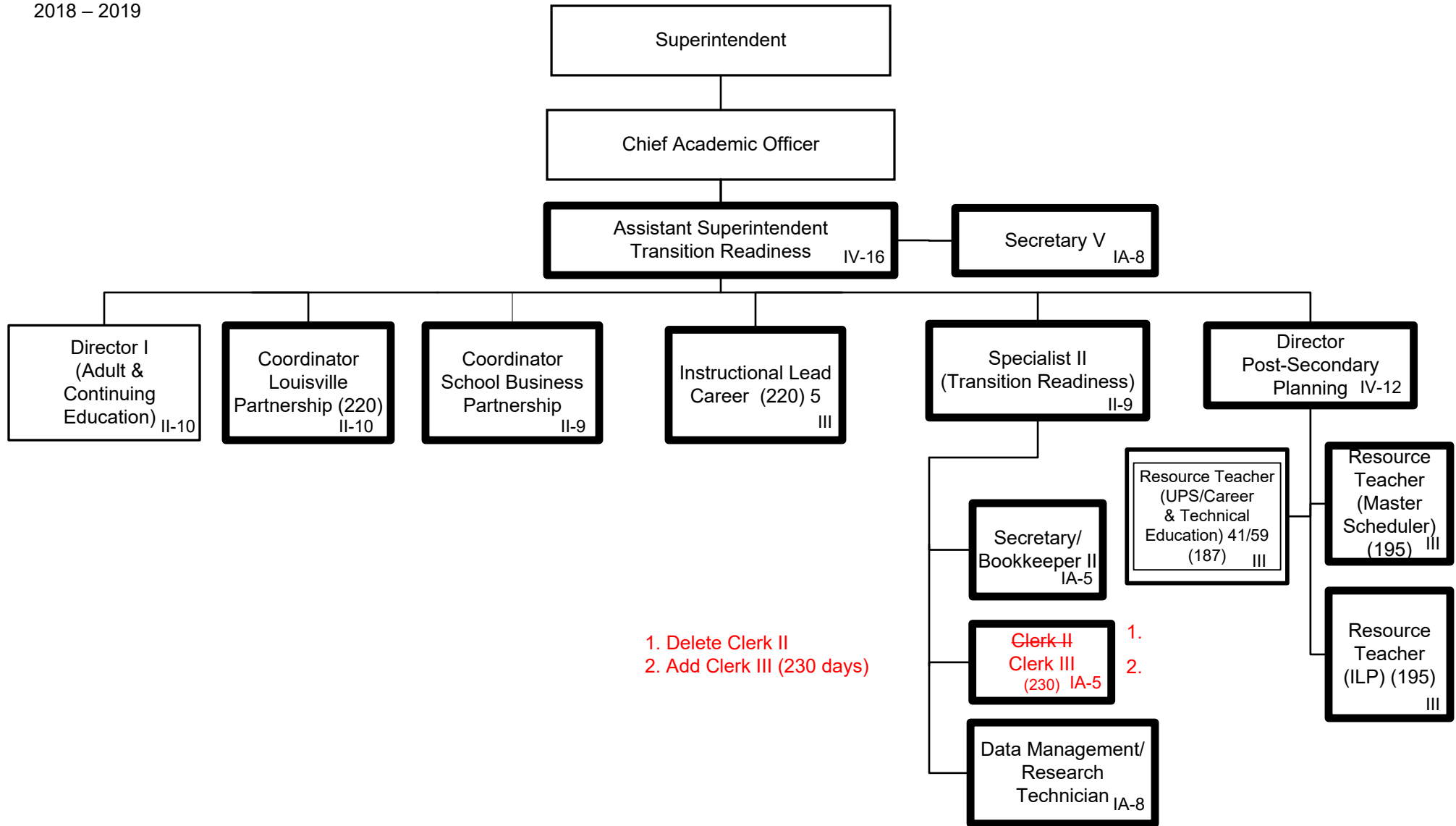


Summary:

General Fund Positions: 14
Categorical Fund Positions: 32

E-13 E-10

9/25/18
2/12/19



Summary:

General Fund Positions: 16
Categorical Fund Positions: 1

E-11 E-8

2/12/19
Submitted 6/12/18
Effective 7/01/18

Changes for 2/12/19
(1/21/19)

PAGE

DIVISION

A	Administration
B	Chief of Staff
C	General Counsel
D	Academic School Division
E	Academic Services Division
F	Communication and Community Relations
G	Human Resources Division
H	Operations Division
I	Diversity, Equity, and Poverty Division
J	Financial Division
K	Technology Division
L	Accountability, Research and Systems Improvement
M	Exceptional Child Education

TABLE OF CONTENTS

Legend

i

ADMINISTRATION

AD1	Administration	A-1
IA1	Internal Audit	A-2
AB1	Chief of Staff	B-1
GC1	General Counsel	C-1
ER1	Labor Management and Employee Relations	C-2

ACADEMIC SCHOOL DIVISION

AS1	Academic School Division	D-1
ON1	Academic School Division (Elementary Zone 1)	D-2
TW1	Academic School Division (Elementary Zone 2)	D-3
TH1	Academic School Division (Elementary Zone 3)	D-4
FO1	Academic School Division (Middle Schools)	D-5
SX1	Academic School Division (High Schools)	D-6
AT1	Activities and Athletics	D-7
CH1	School Choice	D-8

ACADEMIC SERVICES DIVISION

A01	Academic Services Division	E-1
FI1	School Culture and Climate	E-2
PP1	Pupil Personnel	E-3
CA1	Teaching and Learning	E-4
TI1	Title I, II, IV, and Programmatic Support	E-5
LI1	Library Media Services	E-6

~~EA1 Early Childhood E-7~~

~~DE1 DuValle Education Center E-8~~

~~LE1 ESL E-9~~

CM1 Teaching and Learning Innovation ~~E-10~~ 7

ST1 Transition Readiness ~~E-11~~ 8

AE1 Adult and Continuing Education ~~E-12~~ 9

SP1 Academic Support Programs ~~E-13~~ 10

HP1 Physical Development and Health Services ~~E-14~~ 11

LE1 English as a Second Language E-12

EA1 Early Childhood E-13

DE1 DuValle Education Center E-14

COMMUNICATIONS & COMMUNITY RELATIONS

CC1 Communications and Community Relations F-1

MP1 Materials Production F-2

HUMAN RESOURCES DIVISION

HU1 Human Resources Division G-1

CT1 Human Resources Recruitment and Staffing G-2

CS1 Human Resources Support Services G-3

BA1 Benefits and Leave Center G-4

OPERATIONS SERVICES DIVISION

OP1 Operations Services Division H-1

SN1 School and Community Nutrition Services H-2

TR1 Transportation Services H-3

VM1 Vehicle Maintenance H-4

PM1 Property Management and Maintenance H-5

FA1 Facility Planning H-6

SF1 Safety and Environmental Services H-7

PT1 Support Services and Special Projects H-8

SU1	Supply Services	H-9
SI1	Security and Investigations	H-10

DIVERSITY, EQUITY, AND POVERTY DIVISION

DV1	Diversity, Equity and Poverty	I-1
-----	-------------------------------	-----

FINANCIAL SERVICES DIVISION

FS1	Financial Services Division	J-1
FP1	Financial Planning and Management	J-2
AC1	Accounting Services	J-3
GA1	Grants and Awards Accounting	J-4
PR1	Payroll and Cash Management	J-5
PU1	Purchasing	J-6

TECHNOLOGY DIVISION

TD1	Technology Division	K-1
MI1	Information Technology	K-2
CE1	Computer Education Support	K-3

ACCOUNTABILITY, RESEARCH, AND SYSTEMS IMPROVEMENT

EV1	Accountability, Research and Systems Improvement	L-1
RD1	Resource Development	L-2
PL1	Systems Improvement	L-3
TS1	Assessment	L-4

EXCEPTIONAL CHILD EDUCATION

EC1	Exceptional Child Education	M-1
GL1	Greater Louisville Educational Cooperative	M-2
EP1	ECE Placement and Assessment	M-3