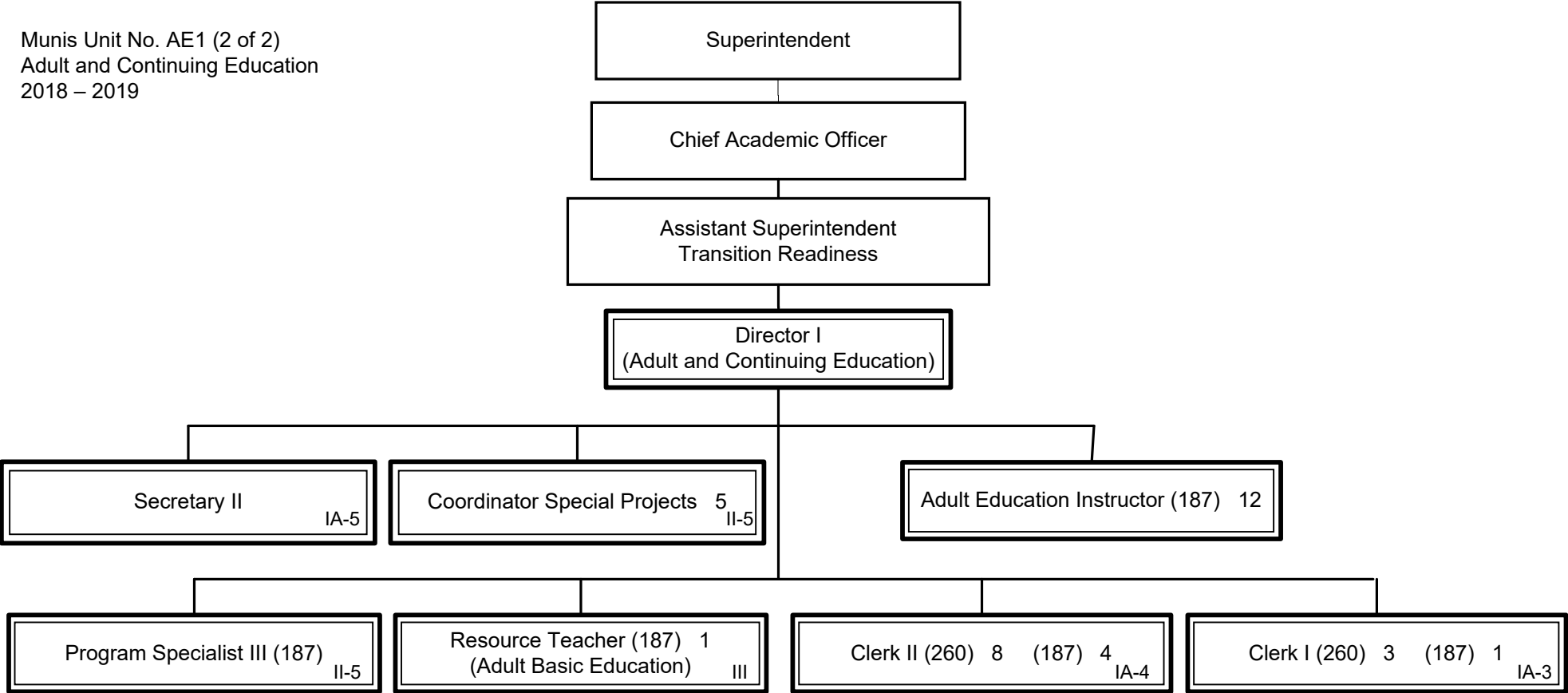


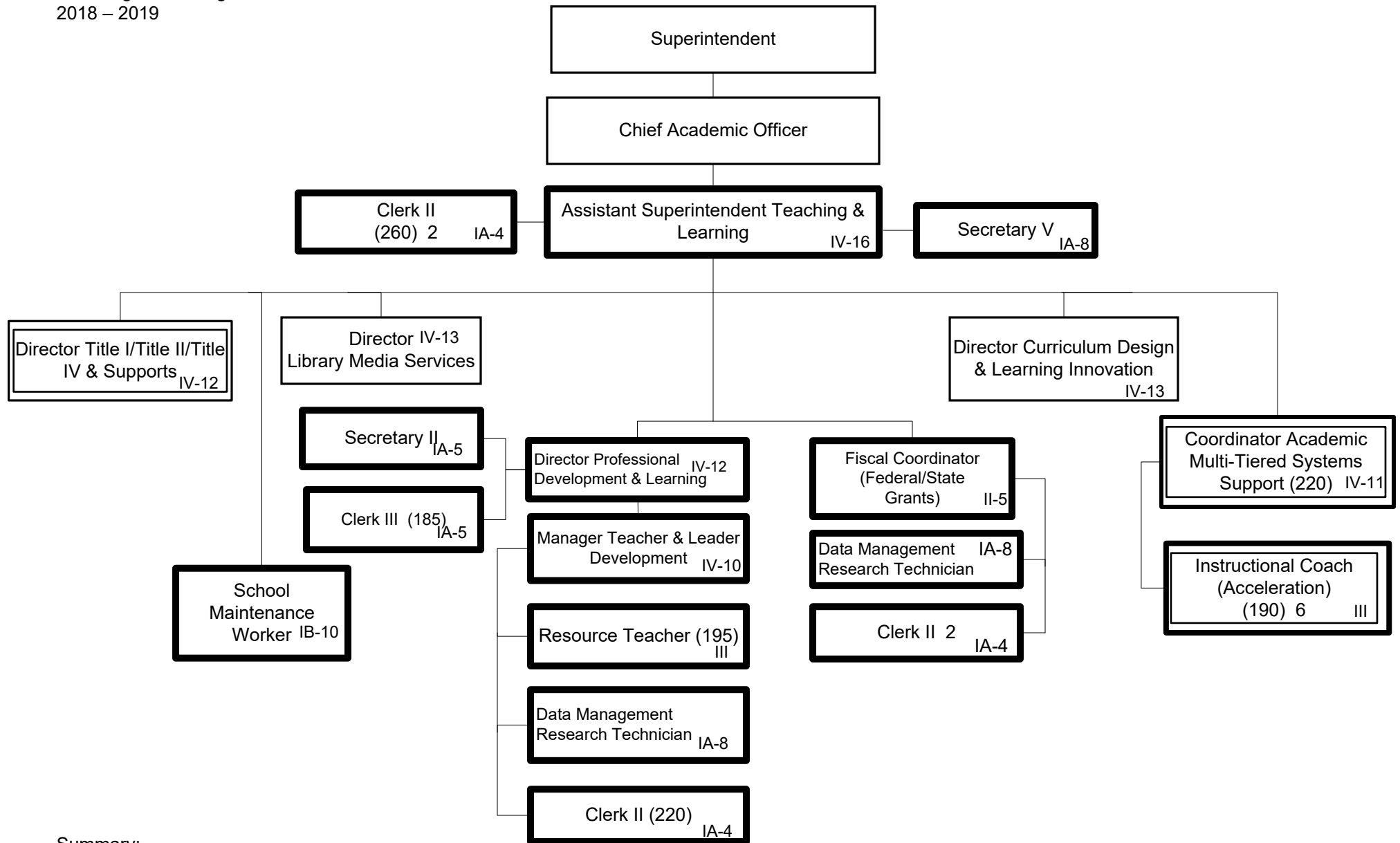
Summary:

General Fund Positions: 0
 Categorical Fund Positions: 35



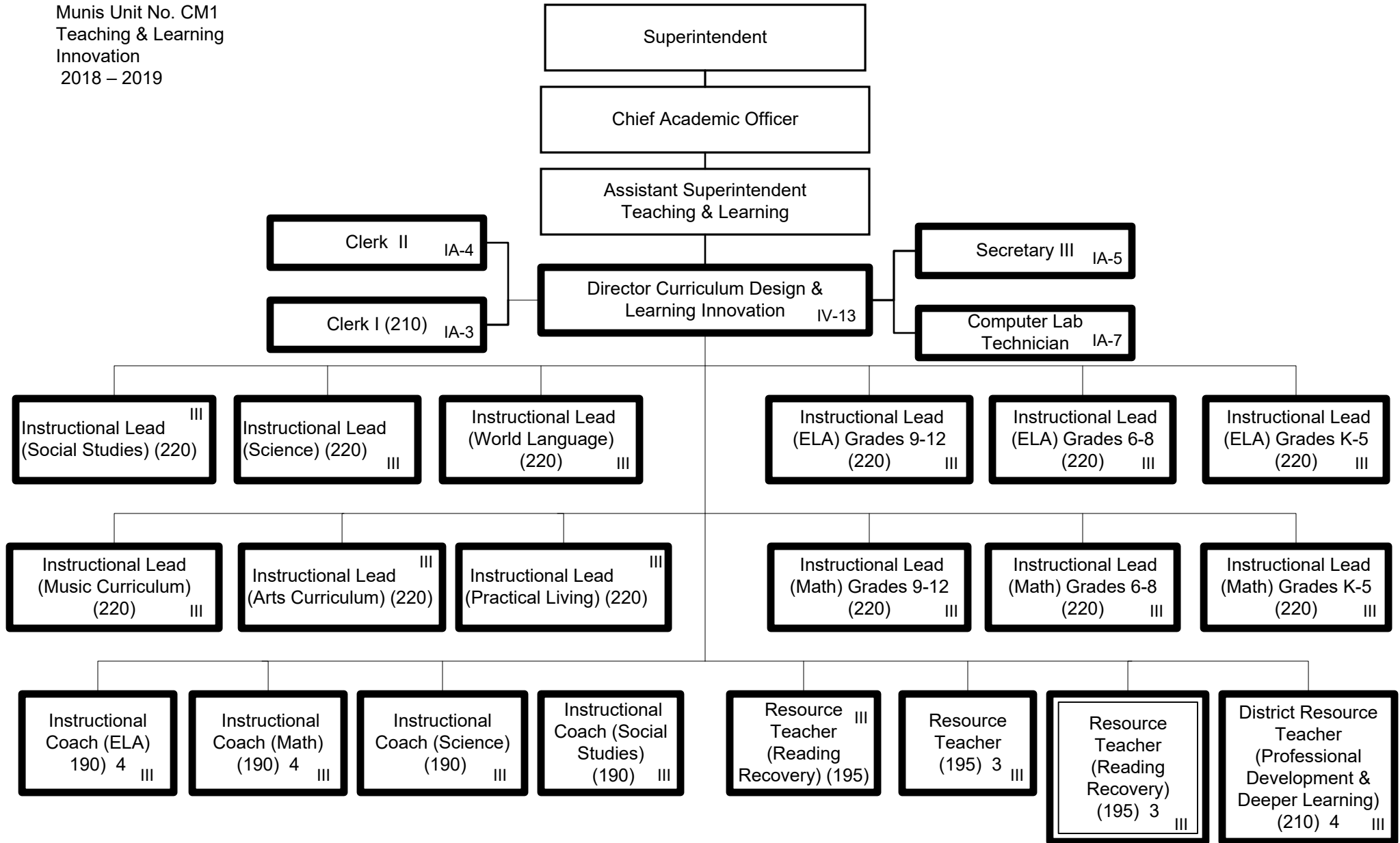
Summary:

General Fund Positions: 0
Categorical Fund Positions: 37



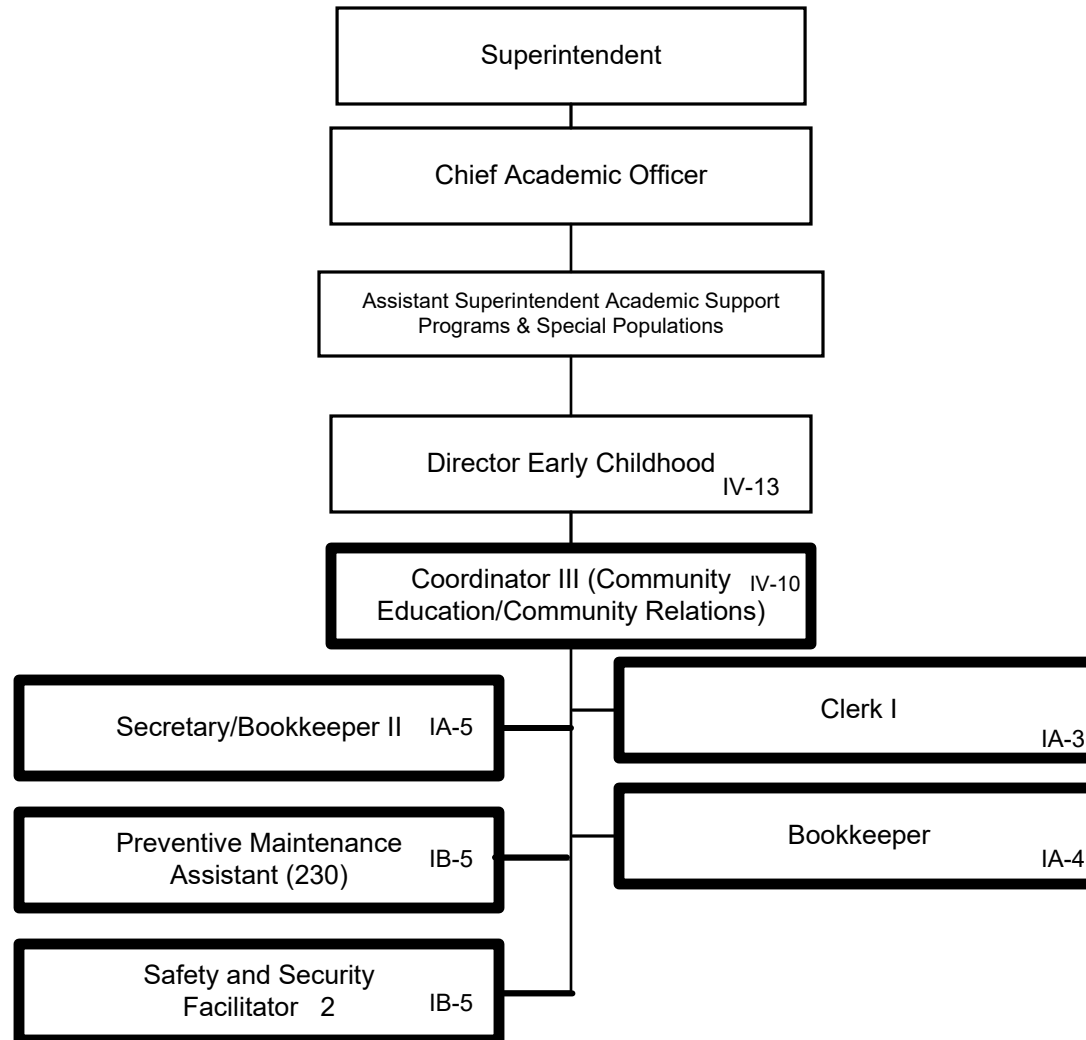
Summary:

General Fund Positions: 16
Categorical Fund Positions: 7



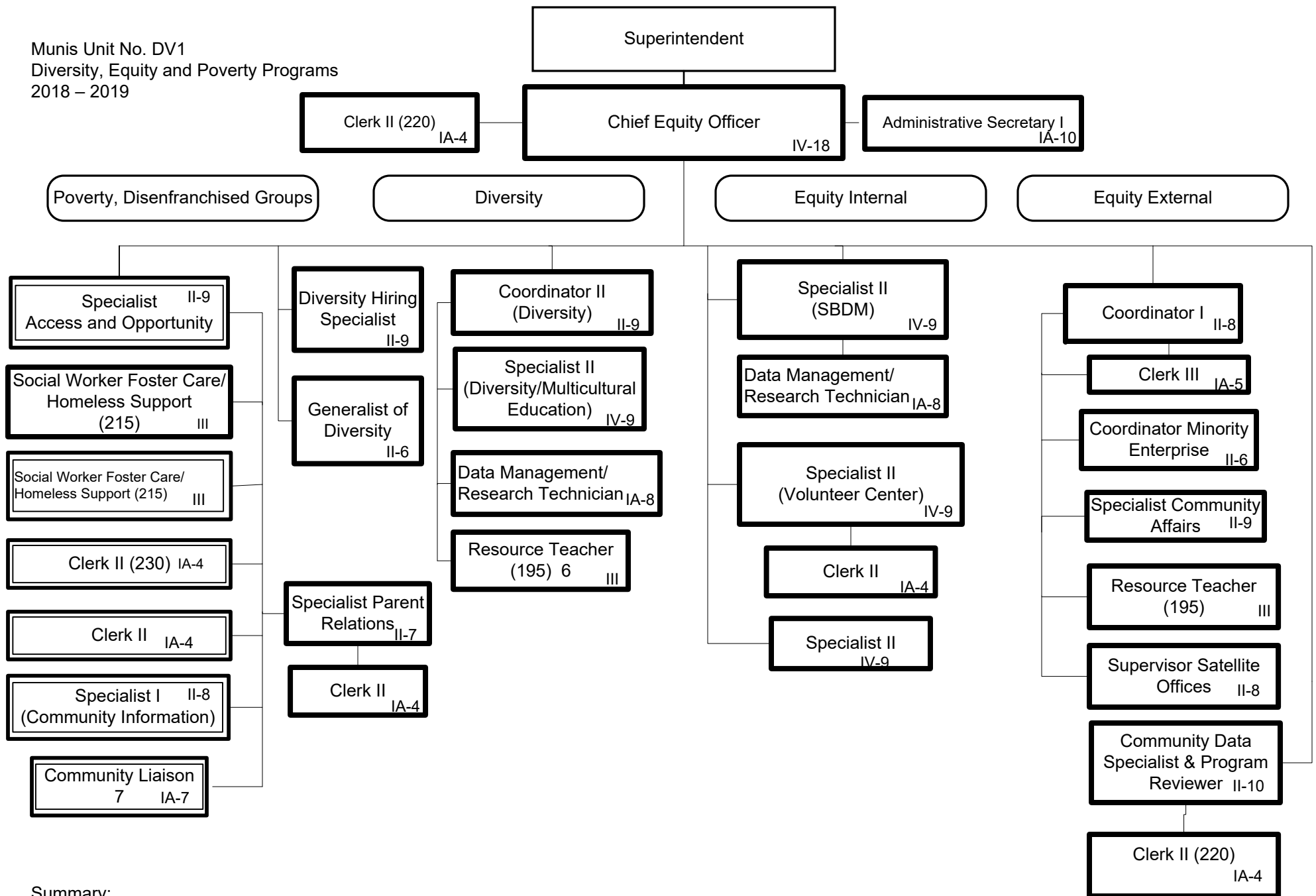
Summary:

General Fund Positions: 35
Categorical Fund Positions: 3



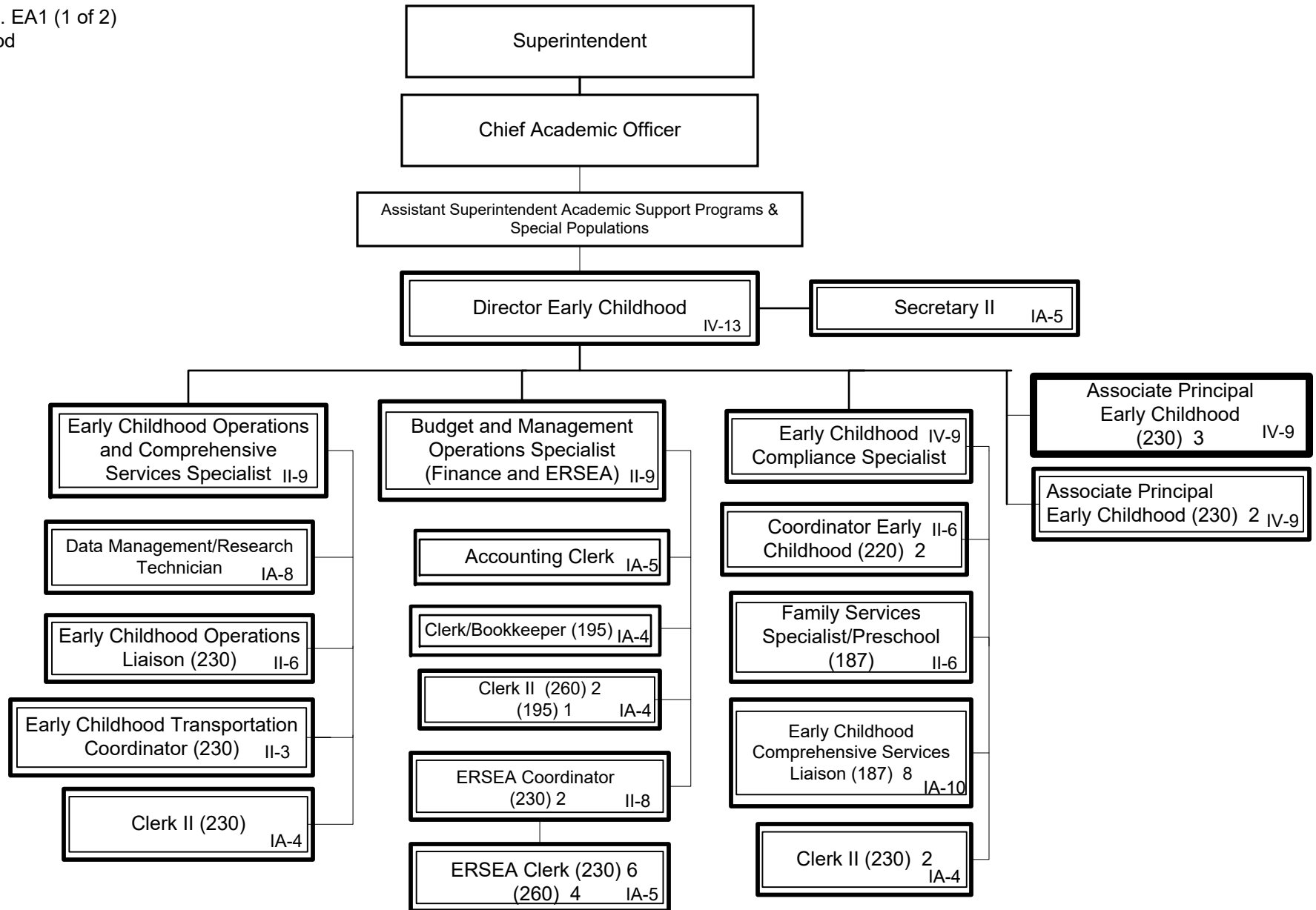
Summary:

General Fund Positions: 7
Categorical Fund Positions: 0



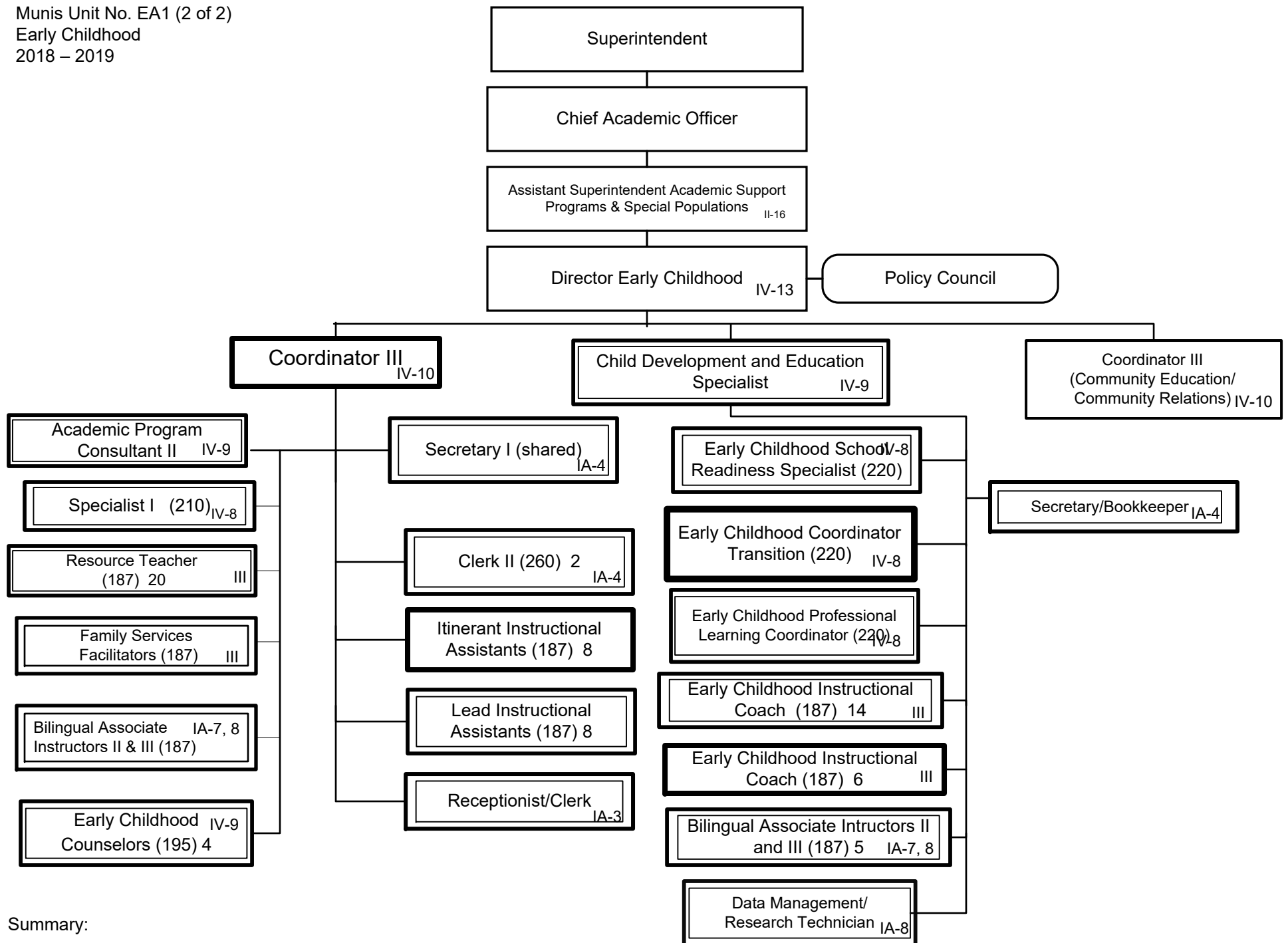
Summary:

General Fund Positions: 27
Categorical Fund Positions: 12



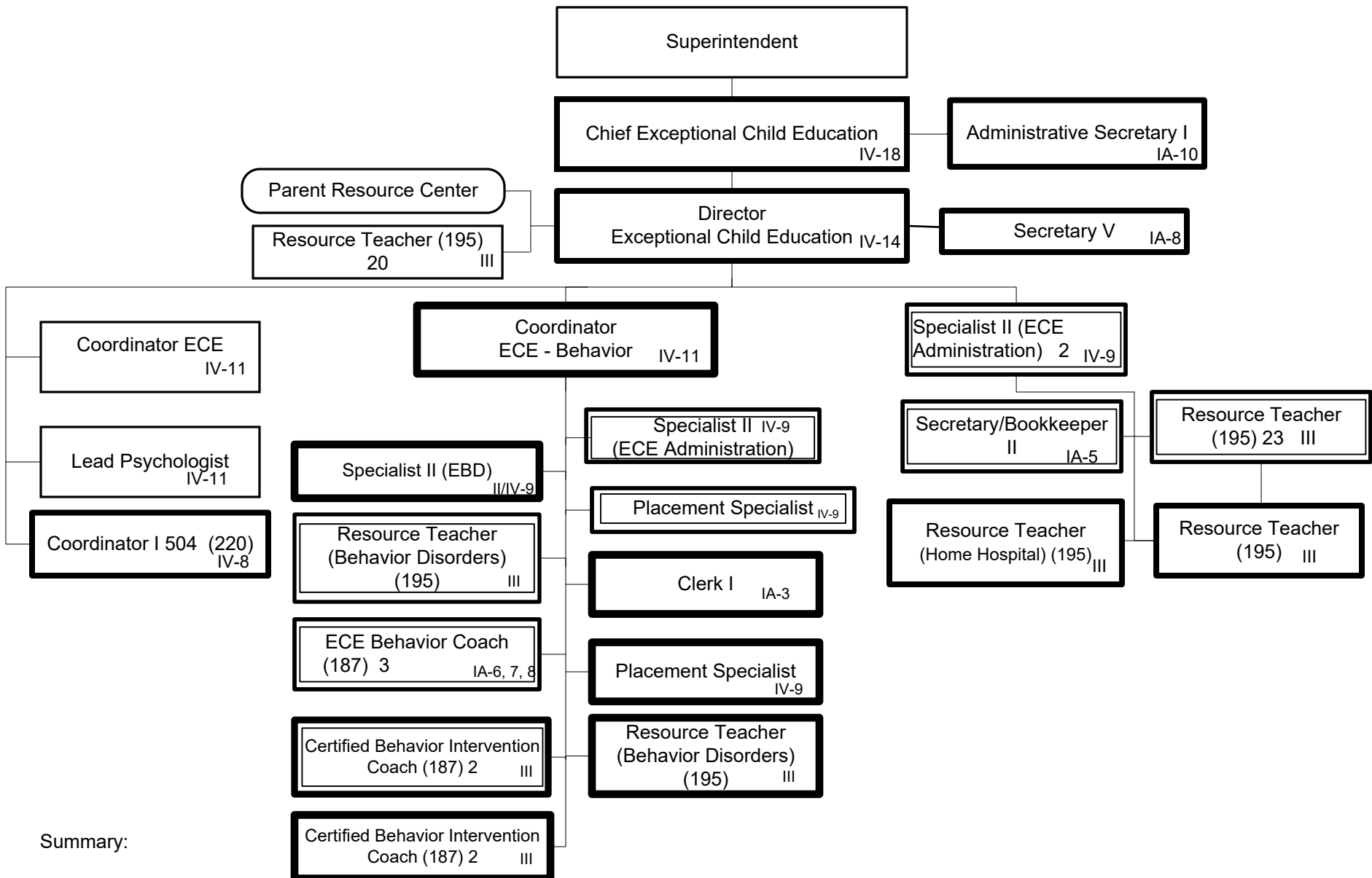
Summary:

General Fund Positions: 3
Categorical Fund Positions: 41



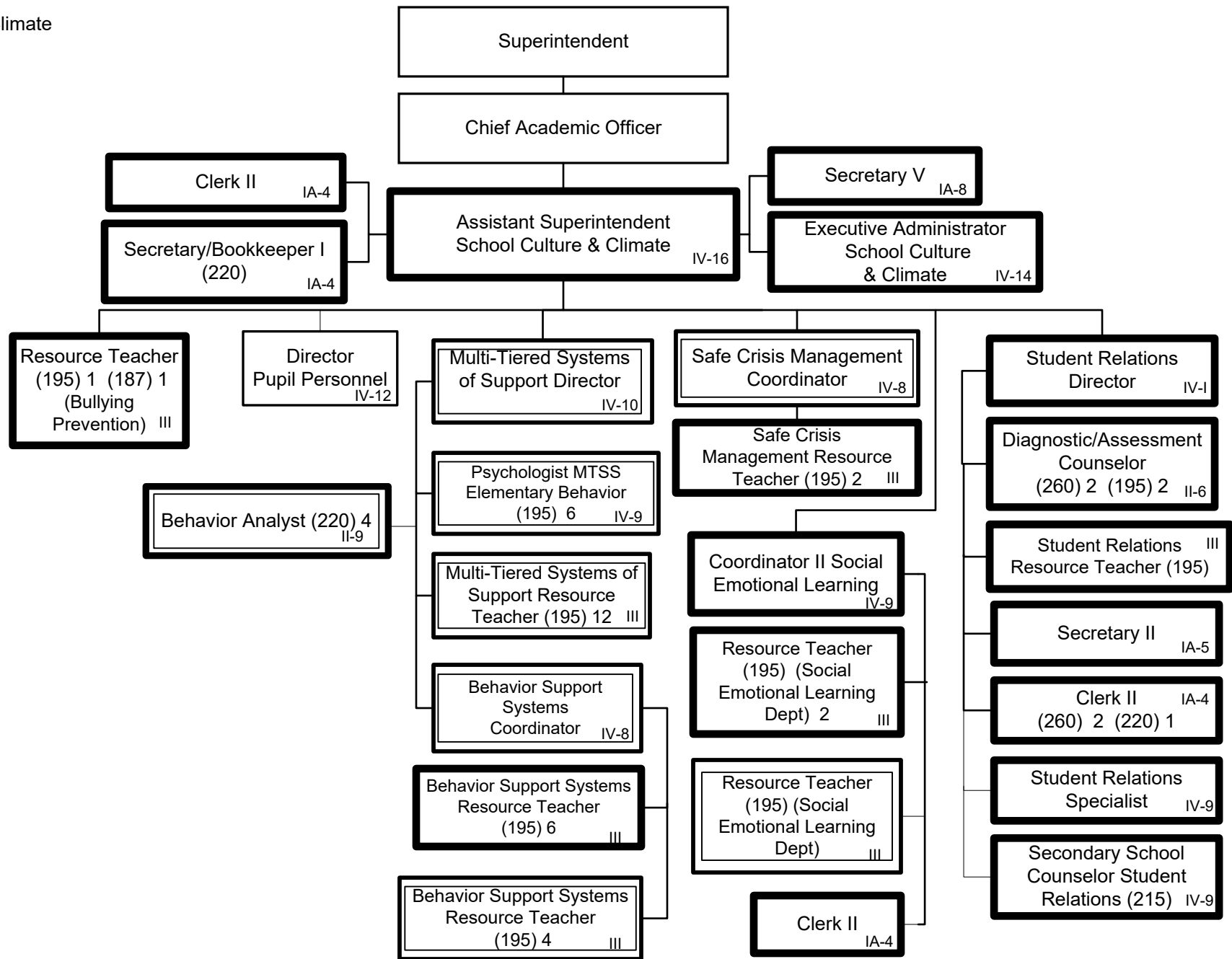
Summary:

General Fund Positions: 16
Categorical Fund Positions: 64



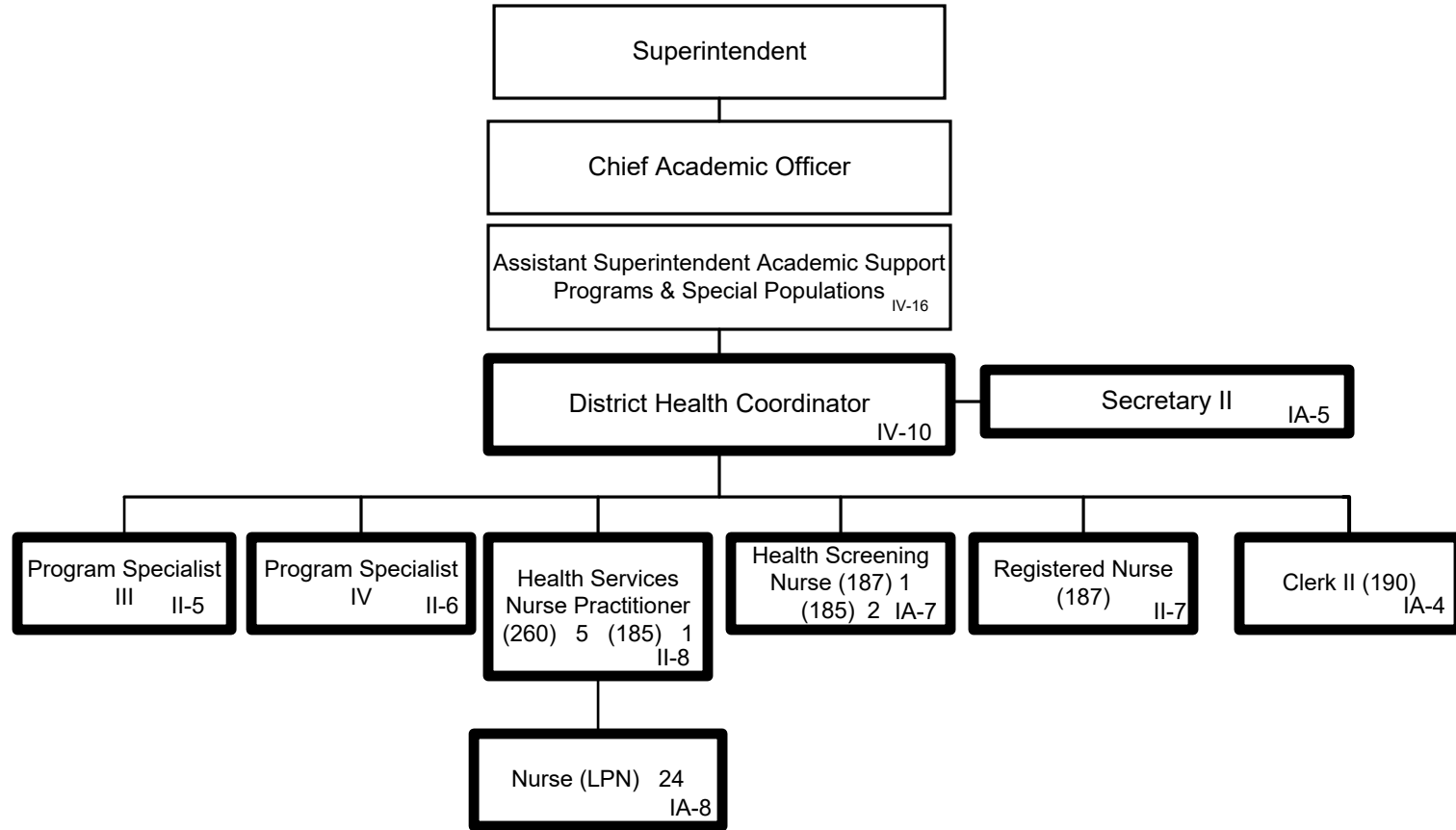
Summary:

General Fund Positions: 14
 Categorical Fund Positions: 34



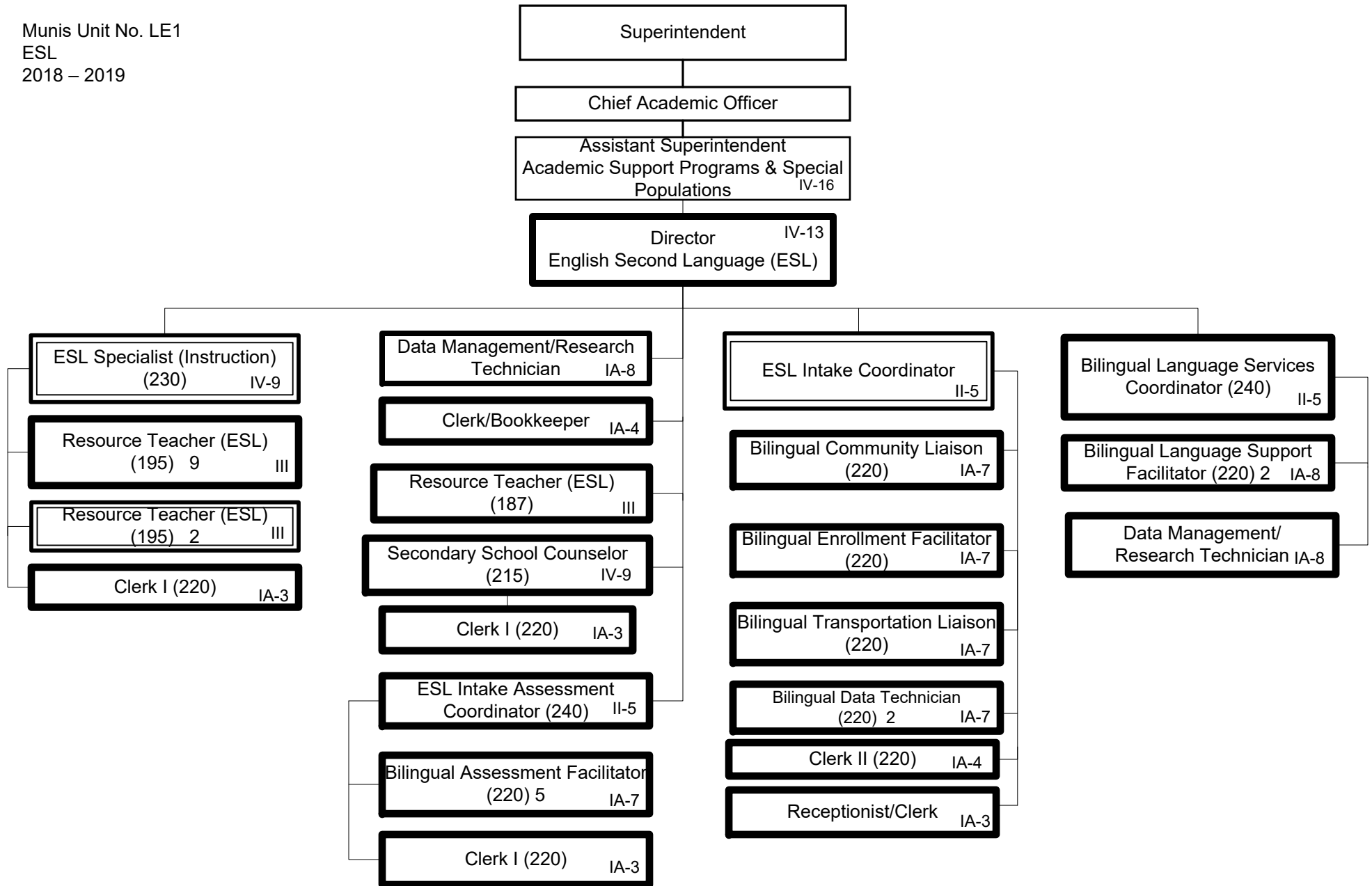
Summary:

General Fund Positions: 29
Categorical Fund Positions: 30



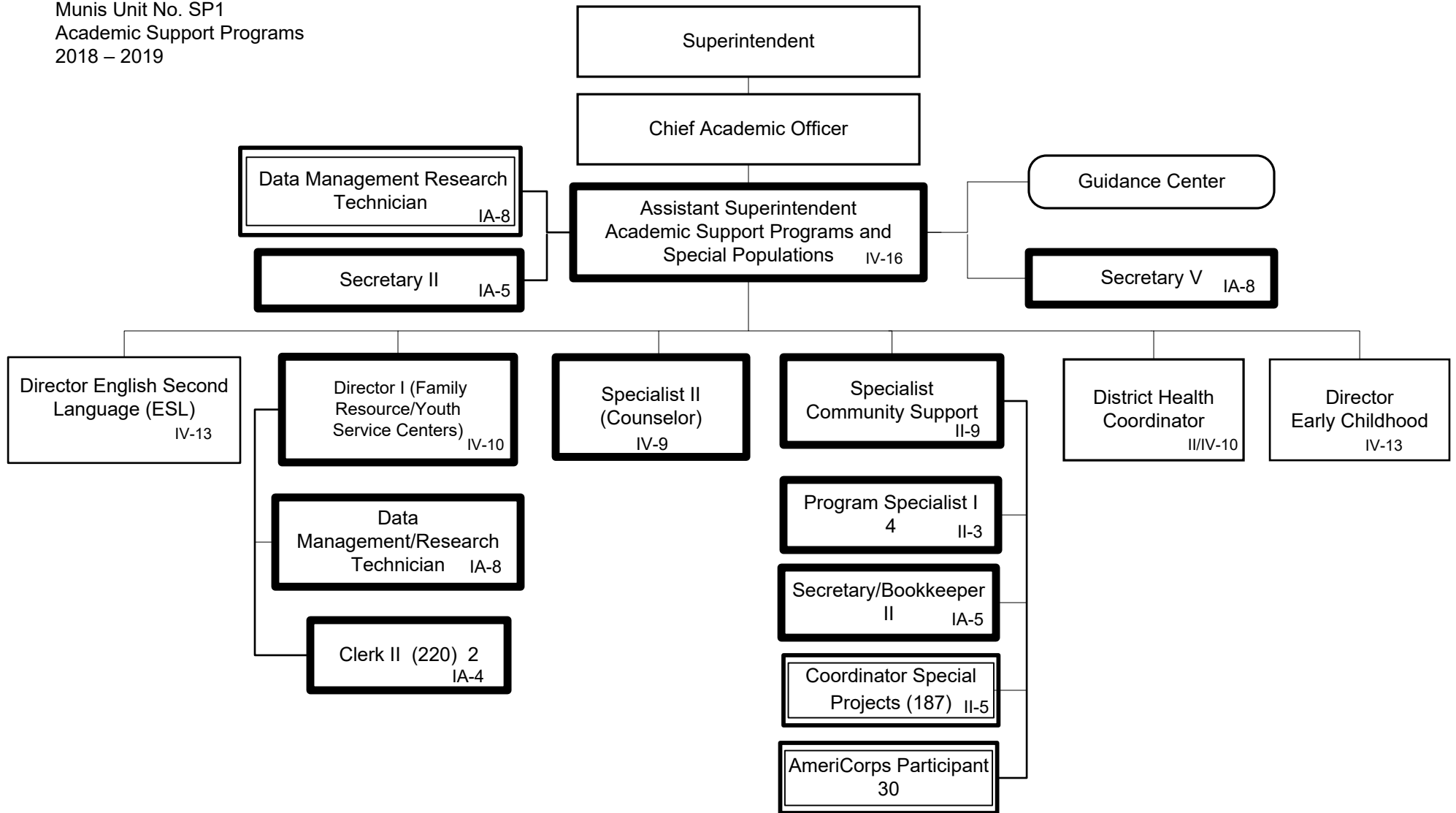
Summary:

General Fund Positions: 39
Categorical Fund Positions: 0



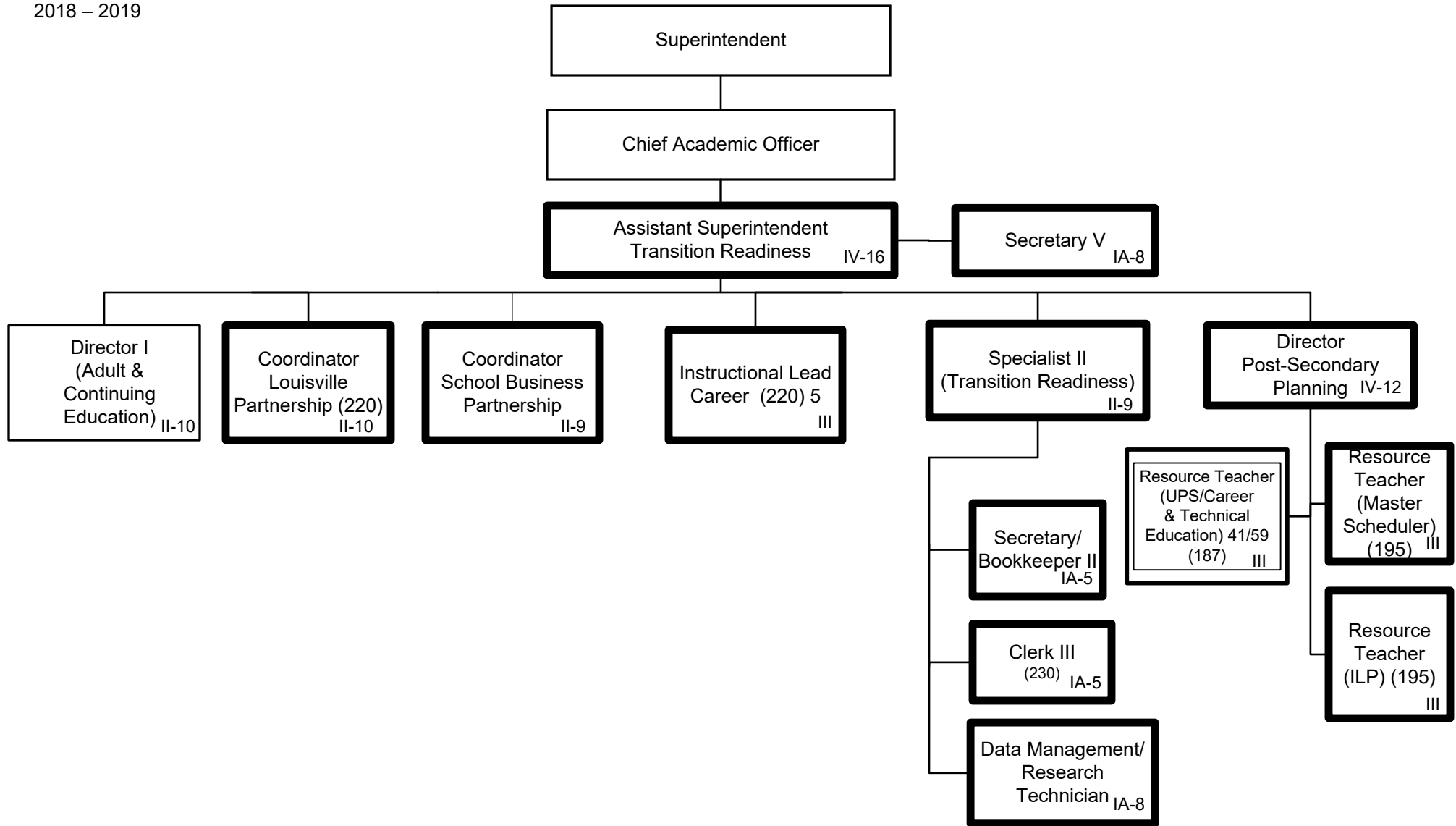
Summary:

General Fund Positions: 34
Categorical Fund Positions: 4



Summary:

General Fund Positions: 14
Categorical Fund Positions: 32



Summary:

General Fund Positions: 16
Categorical Fund Positions: 1

| <u>PAGE</u> | <u>DIVISION</u> |
|--------------------|--|
| A | Administration |
| B | Chief of Staff |
| C | General Counsel |
| D | Academic School Division |
| E | Academic Services Division |
| F | Communication and Community Relations |
| G | Human Resources Division |
| H | Operations Division |
| I | Diversity, Equity, and Poverty Division |
| J | Financial Division |
| K | Technology Division |
| L | Accountability, Research and Systems Improvement |
| M | Exceptional Child Education |

TABLE OF CONTENTS

Legend

i

ADMINISTRATION

| | | |
|-----|---|-----|
| AD1 | Administration | A-1 |
| IA1 | Internal Audit | A-2 |
| AB1 | Chief of Staff | B-1 |
| GC1 | General Counsel | C-1 |
| ER1 | Labor Management and Employee Relations | C-2 |

ACADEMIC SCHOOL DIVISION

| | | |
|-----|--|-----|
| AS1 | Academic School Division | D-1 |
| ON1 | Academic School Division (Elementary Zone 1) | D-2 |
| TW1 | Academic School Division (Elementary Zone 2) | D-3 |
| TH1 | Academic School Division (Elementary Zone 3) | D-4 |
| FO1 | Academic School Division (Middle Schools) | D-5 |
| SX1 | Academic School Division (High Schools) | D-6 |
| AT1 | Activities and Athletics | D-7 |
| CH1 | School Choice | D-8 |

ACADEMIC SERVICES DIVISION

| | | |
|-----|---|-----|
| A01 | Academic Services Division | E-1 |
| FI1 | School Culture and Climate | E-2 |
| PP1 | Pupil Personnel | E-3 |
| CA1 | Teaching and Learning | E-4 |
| TI1 | Title I, II, IV, and Programmatic Support | E-5 |
| LI1 | Library Media Services | E-6 |

| | | |
|-----|--|------|
| | CM1 Teaching and Learning Innovation | E-7 |
| ST1 | Transition Readiness | E-8 |
| | AE1 Adult and Continuing Education | E-9 |
| SP1 | Academic Support Programs | E-10 |
| | HP1 Physical Development and Health Services | E-11 |
| | LE1 English as a Second Language | E-12 |
| | EA1 Early Childhood | E-13 |
| | DE1 DuValle Education Center | E-14 |

COMMUNICATIONS & COMMUNITY RELATIONS

| | | |
|-----|--|-----|
| CC1 | Communications and Community Relations | F-1 |
| | MP1 Materials Production | F-2 |

HUMAN RESOURCES DIVISION

| | | |
|-----|--|-----|
| HU1 | Human Resources Division | G-1 |
| | CT1 Human Resources Recruitment and Staffing | G-2 |
| | CS1 Human Resources Support Services | G-3 |
| | BA1 Benefits and Leave Center | G-4 |

OPERATIONS SERVICES DIVISION

| | | |
|-----|---|------|
| OP1 | Operations Services Division | H-1 |
| | SN1 School and Community Nutrition Services | H-2 |
| | TR1 Transportation Services | H-3 |
| | VM1 Vehicle Maintenance | H-4 |
| | PM1 Property Management and Maintenance | H-5 |
| | FA1 Facility Planning | H-6 |
| | SF1 Safety and Environmental Services | H-7 |
| | PT1 Support Services and Special Projects | H-8 |
| | SU1 Supply Services | H-9 |
| | SI1 Security and Investigations | H-10 |

DIVERSITY, EQUITY, AND POVERTY DIVISION

| | | |
|-----|-------------------------------|-----|
| DV1 | Diversity, Equity and Poverty | I-1 |
|-----|-------------------------------|-----|

FINANCIAL SERVICES DIVISION

| | | |
|-----|-----------------------------------|-----|
| FS1 | Financial Services Division | J-1 |
| FP1 | Financial Planning and Management | J-2 |
| AC1 | Accounting Services | J-3 |
| GA1 | Grants and Awards Accounting | J-4 |
| PR1 | Payroll and Cash Management | J-5 |
| PU1 | Purchasing | J-6 |

TECHNOLOGY DIVISION

| | | |
|-----|----------------------------|-----|
| TD1 | Technology Division | K-1 |
| MI1 | Information Technology | K-2 |
| CE1 | Computer Education Support | K-3 |

ACCOUNTABILITY, RESEARCH, AND SYSTEMS IMPROVEMENT

| | | |
|-----|--|-----|
| EV1 | Accountability, Research and Systems Improvement | L-1 |
| RD1 | Resource Development | L-2 |
| PL1 | Systems Improvement | L-3 |
| TS1 | Assessment | L-4 |

EXCEPTIONAL CHILD EDUCATION

| | | |
|-----|--|-----|
| EC1 | Exceptional Child Education | M-1 |
| GL1 | Greater Louisville Educational Cooperative | M-2 |
| EP1 | ECE Placement and Assessment | M-3 |