



## Bullitt County Public Schools

1040 Highway 44 East  
Shepherdsville, Kentucky 40165

502-869-8000  
Fax 502-543-3608  
[www.bullittschools.org](http://www.bullittschools.org)

DATE: January 15, 2019

TO: Mr. Jesse Bacon, Superintendent *JB*

FROM: Angela Voyles, Director of School Food Service *AV*

RE: Request to Award Food Service Equipment Bid (2018-2019#9)

The Board of Education approved School Food Service's request to solicit bids for a new freezer at North Bullitt High School at the October 2018, Board meeting. The bid opening was held at 1:00 PM on December 26, 2018, in the School Food Service office. Attached are the bid submissions. Only one bid submission was complete\* therefore, SFS is requesting to accept the bid by Manning Brothers Food Equipment Company. Please let me know if you need any additional information regarding this request.

\* The bid submission received by Central Restaurant Products did not include a required Vendor Response form. However, even if Central Restaurant Products submitted a Vendor Response form, SFS would have recommended Manning Brothers Equipment Company based on the lower price.

*B. Sutton*



Voyles, Angela <angela.voyles@bullitt.kyschools.us>

---

## Food Service Equipment Bid # 2018-2019 #9

1 message

---

**Stacey Landfield** <stacey@manningbrothers.com>  
To: "Voyles, Angela" <angela.voyles@bullitt.kyschools.us>

Fri, Dec 21, 2018 at 3:30 PM

Thank you for the opportunity,

Stacey

Stacey Landfield

Sales Manager

(859) 396-4443

Manning Brothers Food Equipment Co., Inc. | 210 Sandy Creek Road | Athens, Georgia 30607  
Toll Free (800) 554-3004 | Local (706) 549-7088 | Fax (706) 549-8403

Now sign in to [www.manningbrothers.com](http://www.manningbrothers.com) to view *all* of your ordering history, place orders, and make payments!

We offer financing! Visit [www.manningbrothers.com/financing](http://www.manningbrothers.com/financing) for *instant* quotes.



---

This email and any files transmitted with it are confidential and intended solely for the use of the individual or entity to whom they are addressed. If you have received this email in error please notify [webadmin@manningbrothers.com](mailto:webadmin@manningbrothers.com). If you are not the named addressee you should not disseminate, distribute or copy this e-mail. Please notify the sender immediately by e-mail if you have received this e-mail by mistake and delete this e-mail from your system. If you are not the intended recipient you are notified that disclosing, copying, distributing or taking any action in reliance on the contents of this information is strictly prohibited.

Warning: Although Manning Brothers Food Equipment Co., Inc. has taken reasonable precautions to ensure no viruses or malware are present in this email, we cannot accept responsibility for any loss or damage arising from the use of this email or attachments.

---



**Walk-In Freezer Unit for N. Bullitt HS Kitchen Bid # 2018-2019 #9.pdf**

10141K

Vendor Response Form

Walk In Freezer Unit – North Bullitt High School

Bid Number 2018-2019 #9

Firm: Manning Bros. Food Service Equipment & Supplies

Signed by:

Stacey A. Landfield

Title: Stacey Landfield, Sales Manager, Kentucky Operations

Address: 210 Sandy Creek Rd. Athens, GA 30607

Date: December 21, 2018

Telephone: 859-396-4443

Brand: Leer

Model No: 761025DUALRM

Bid Price for (Including all accessories listed in IFB) \$ 27,525 (does not include installation)

Shipping/ Handling Charge: \$715.00

Warranty Information: 10 years on the Panels, 1 year for parts & labor (refrigeration) Additional 4 years on the Compressor.

Free Start-Up: YES or NO Included with Installation

Free Initial Training: YES or NO Included with Installation

Free Additional Training: YES or NO

\* Installation was not included in the bid request but I wanted to add it just in case.

Installation to be done by:

Bread ~~not~~ Mechanical, Jackson KY.

Price \$ 13,500-

\* If awarded the job, we will come out to site.

# Quote

Dec 21, 2019

**To:**  
Bullitt County Schools  
Angela Voyles  
1040 HWy 44 E  
Shepherdsville, KY 40165  
502-869-8050 (Contact)

**Project:**  
North Bullitt High School

**From:**  
Manning Brothers  
Stacey Landfield  
210 Sandy Creek Road  
Athens, GA 30607  
706.549.7088  
859-396-4443 (Contact)

Job Reference Number: 3494

Visit us online at [www.manningbrothers.com](http://www.manningbrothers.com)

Leer freight is included in quote  
Pricing valid through 3.31.2019

Item	Qty	Description	Sell	Sell Total
<b>WALK IN</b>				
1	1 ea	<b>WALK IN</b> Model No. 761025DUALRM Dimensions And Basic Description 10' 0-1/2" x 24' 7" x 7' 6-1/2" (4.25") Freezer *INDOOR* Approx. Wt: 4,911 lbs.  Floor(s) FREEZER Floor (4.25" Floor) 16 Ga Stnls No Under/Overlay * Suitable for Heavier Foot Traffic and Hand Carts  Finishes *26 Ga Stucco Galv (STD) Acrylic Coating Exterior *26 Ga Stucco Galv White Interior Additional Exterior Finishes Front *26 Ga Stucco Galv White 72 (Sq Ft) Left *26 Ga Stucco Galv White 176 (Sq Ft) Back *26 Ga Stucco Galv White 72 (Sq Ft)  Doors 1 Door Freezer, 36x78, Right Hand, Interior SameAsWall, Exterior, SameAsWall 1 Door Freezer, 36x78, Left Hand, Interior SameAsWall, Exterior, SameAsWall  Accessories INCLUDES UL Labels 4 1/8 Aluminum diamond kickplate 3 1810 4ft LED Light Fixture â Inc. Bulb 19 (LIN FT) Corner Trim(*26 Ga Stucco Galv White) 66 (SQ FT) Standard closure panel(*26 Ga Stucco Galv White); 18" high closure(2) short walls(1) long wall	\$27,525.00	\$27,525.00

Item	Qty	Description	Sell	Sell Total
		REFRIGERATION		
		REFRIGERATION GROUP(1)		
		2 (LSF090BEQRC6K) COIL LOW PROF QRC ELEC DEF. 9,000 BTU 208/1 V		
		2 (MOZ035L63CFLT) CDU Scroll 3.5 HP 208/230/3 Outdoor PR QRC LL Kit		
		Adj		
		-10 Deg.		
		WARRANTIES		
		Standard Warranties Included with Your Order		
		Refrigeration: 30 Days labor, 1 year parts		
		Walk-in and Accessories 30 Days labor, 1 year parts		
		Additional Warranties -Included in Grand Total		
		2 (1304964) WAR EXTD 4YR SCROLL COMP 3.5 HP		
		_SCROLL_3.5_HP		
		2 (ESA-LC004) LEER 1 YR LOCAL LABOR WARRANTY 4 HP -		
		REFRIGERATION ONLY		
		ITEM TOTAL:		\$27,525.00
2	1 ea	FREIGHT	\$715.00	\$715.00
		Model No. FREIGHT		
		Freight estimate to zip #40165		
		ITEM TOTAL:		\$715.00
		TEMPERATURE MONITORING		
3	1 ea		\$143.06	<Optional>
		Model No. RF312-TP		
		Diligence WiFi Wireless Temperature and Humidity Data Logger with		
		internal probe. Measurement range from -4Â°F to 140Â°F (-20Â°C to		
		60Â°C) Rechargeable internal lithium polymer battery.		
		ITEM TOTAL: <Optional>		\$143.06
		Total		\$28,240.00

Acceptance: \_\_\_\_\_ Date: \_\_\_\_\_

Printed Name: \_\_\_\_\_



# Product Specifications

## Wood Rail Walk-In Coolers & Freezers

### General

Carroll Coolers Wood Rail Walk-in coolers and freezers are fabricated of modular design and construction. They are designed to allow convenient and accurate field assembly and future enlargement by the simple addition of panels.

#### Panel Construction

The panels consist of interior and exterior metal clad surface precisely formed with steel dies and roll form equipment and thoroughly checked for uniformity and accuracy. The insulation is "foamed-in-place" polyurethane, and when completely heat cured is bonded to the metal skins and forms a rigid polyurethane insulated panel. Standard cooler panels are 4". Standard freezer panels, for applications 32°F and below, are 5 1/2". All panels have wood perimeters that provide structural strength and rigidity.

Panels have tongue and groove edges on adjoining sides of every panel. A flexible vinyl gasket extends around the interior and exterior perimeter of each tongue edge. Gaskets are resistant to damage from oil, grease, water, detergents and sunlight, and are NSF Listed and flame retardant.

#### Insulation

Insulation is "foamed-in-place" polyurethane. Our panels exceed all minimum requirements of the Department of Energy for K-Factor and R-Values. Insulation has a 98% closed-cell structure and average in-place density of 2.0 - 2.2 lbs. per cubic foot.

#### Panel Finish

Exterior and interior surfaces of standard ceiling and sidewall panels are 26-gauge, acrylic coated, embossed galvanized steel.

#### Floor Construction

When a floor is required, panels are 4 5/8" thick, constructed with 4" of insulation and covered with 5/8" underlayment with .050 smooth aluminum. The floor is rated for a uniformly distributed load up to 800 pounds per square foot.

For heavier load applications, a Super Floor, with additional reinforcement and a 2nd layer of underlayment, is available.

#### Walk-In Doors

The standard door (34"x78") is an overlap design unless otherwise specified. All doors 42" in width or less are designed to be self-closing using a brushed chrome positive seal latch with keyed cylinder lock and strike plate. The door and frame are of similar construction and finish as the wall panels.

The standard door frame consists of a wood perimeter onto which the interior and exterior metal skins are secured, creating a thermal break between metal facings. Doors seal to the frame by means of a magnetic gasket.

Each freezer door has anti-condensate heater wires concealed behind the exterior skin, and a second wire in the door frame. The heater wires are accessible should a need for service arise. Applications of over 32°F do not require a heated door or frame. A digital thermometer is provided for the opening side of the frame. The thermometer is accurate to plus/minus 1°F and is NSF Certified.

#### Cam-Action Locking Fasteners/Section Gasketing

Cam-action locking devices are precisely positioned in the panels to insure a positive joint. The locking devices consist of cam-action rotating locking arms in the tongue edge. The locking arms engage a steel rod which is firmly anchored in the groove edge. This action draws all joints tightly together for excellent strength and a tight seal. Locking of standard panels is performed from the interior of the walk-in by means of a provided hex wrench. The hex wrench holes are covered with a plastic plug button upon completion of the installation.



# Product Specifications

## Wood Rail Walk-In Coolers & Freezers

### NSF

The wearing surface of floors is .050 smooth aluminum with 5/8" plywood backing for rigidity. The floors are built with the required NSF cove. When an insulated floor is not required, wood screed walls or flat bottom walls are furnished and ram set or lagged to the existing floor for rigidity. When the standard wood screed walls are built, cove molding is shipped loose to meet NSF requirements. When optional flat bottom walls are built, vinyl screed is shipped loose to meet NSF requirements.

### Door Hardware

The standard door hinges are a spring-loaded, cam-lift design and have a brushed chrome finish. The hinges have steel pins with nylon bushings. The hinges have a minimum 9" strap and are installed in sufficient numbers to carry the weight of the door. The standard door latch is constructed of similar materials and of the same finish as the door hinges. The latch is designed to open the door easily with an inside safety release feature that complies with OSHA standards. A safety release sign is affixed to the inside of the door section that clearly explains proper instructions for the safe exit from the cooler or freezer, even if the door has been locked or padlocked on the outside.

### Door Gaskets

The door gasket is a vinyl material with a concealed magnet which adheres to the metal on the door frame. The gasket design allows for quick and easy replacement in the event the gasket becomes damaged.

### Lighting

Each entrance door is provided with a vapor-proof light fixture for mounting on the interior door frame. The fixture has a shatter-proof globe. A digital thermometer is provided for the exterior strike side of the door frame. The door frame and door plug are UL listed. All electrical components are shipped loose and UL listed. The vapor-proof light fixture is capable of accepting up to a 60 watt bulb. We recommend LED lighting for an energy efficient alternative. (Bulb not included)

### Installation Instructions

A complete set of instructions for the installation of the walk-in or retro kit is provided.



### NSF Certified

Construction is of a design listed by the National Sanitation Foundation (NSF) and carries the NSF Certification label affixed to each door tag.



### UL Electrical Listed

All door sections are listed by the Underwriters Laboratories (UL) and each door section carries the UL listing mark.

### UI FI 25 Flame Spread Certified

Carroll Coolers' panels have a UL core material flame spread rating of 25 or less.

Each panel has an affixed label stating these ratings. (Class 1 Composite Panel). The above rating is not intended to reflect hazards presented by this or any other material under actual fire conditions. (See UL Classified Building Materials Index)

### City of Houston

Certified and approved under the provisions of section 1701.1 of the Houston Building Code as a Fabricator of Exterior Coolers/Freezers.

### State of Oregon

Licensed/registered as provided by law of the State of Oregon as an approved manufacturer of structural insulated panels, license number 583 PFC.

### Panel Warranty

CCI warrants, to the original purchaser, the full "foamed-in-place" panels to be free from defects in material and workmanship under normal use and service. Panels are warranted against delamination for a period of ten (10) years from the date of shipment to an authorized representative and shall be obligated to repair or replace (F.O.B. Carroll, IA) any panels that have delaminated metal skins.

This warranty shall not apply to equipment which, in the manufacturer's opinion, has been subjected to misuse, misapplication, improper installation or acts of God.

Since 1987 the people at CCI have been committed to providing you with a top quality walk-in and the very best service in the industry - both before and after the sale.

At Carroll Coolers, we take great pride in serving our customers' needs in an accurate and timely fashion. Plus, we have the industry's best on-time shipping history for quality and satisfaction guaranteed.



### Carroll Coolers

19705 Highway 30 W

Carroll, IA 51401

Phone: 800.764.6834

[www.carrollcoolers.com](http://www.carrollcoolers.com)

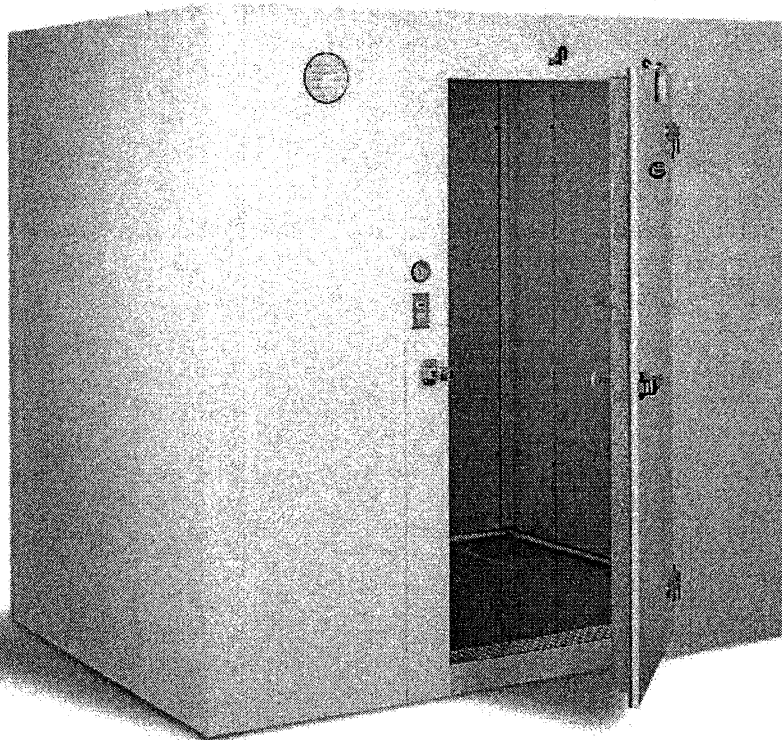
MADE IN THE USA





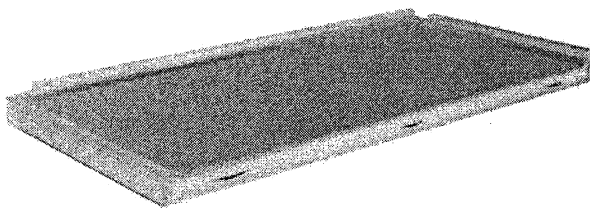


## Wood Rail Walk-In Coolers & Freezers



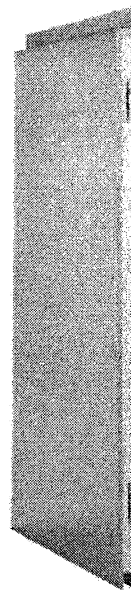
### Standard door

Standard door size is 34"x78"  
Standard threshold is  
1/8" aluminum. All freezers and  
coolers with a floor include a  
threshold.



### Floor Panels

When a floor is required, panels are 4 5/8" thick,  
constructed with 4" of insulation and covered with  
5/8" underlayment with .050 smooth aluminum.



### Wall Panel

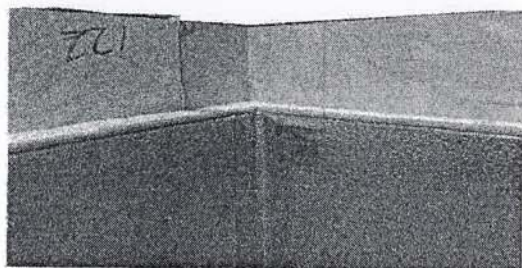
Interior and exterior surfaces are constructed  
with 26-gauge, acrylic coated, embossed  
galvanized steel. Consult your Carroll Cooler  
representative for more finish options.

# Wood Rail

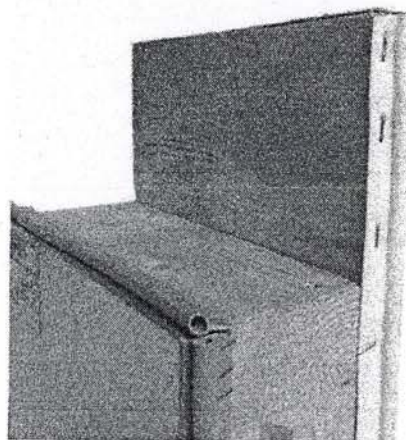
## Walk-In Coolers & Freezers

### Wood Rail

Our wood rail panels offer durability and are ideal for multiple display door line ups.



### In-Fitting Lag-Down Ceiling



- Unexposed ceiling and floor panels provide a cleaner look with only vertical seams exposed
- Minimal alignment effort is required during ceiling installation - saves time and installation costs
- No trim metal required to finish off ceiling installation
- End-users love the look - installers love the simplicity and time savings

Since 1987 the people at CCI have been committed to providing you with a top quality walk-in and the very best service in the industry - both before and after the sale.

At Carroll Coolers, we take great pride in serving our customers' needs in an accurate and timely fashion. Plus, we have the industry's best on-time shipping history for quality and satisfaction guaranteed.



**Carroll Coolers**  
19705 Highway 30 W  
Carroll, IA 51401  
Phone: 800.764.6834  
[www.carrollcoolers.com](http://www.carrollcoolers.com)

**MADE IN THE USA**

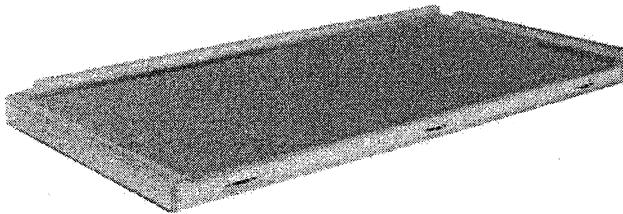






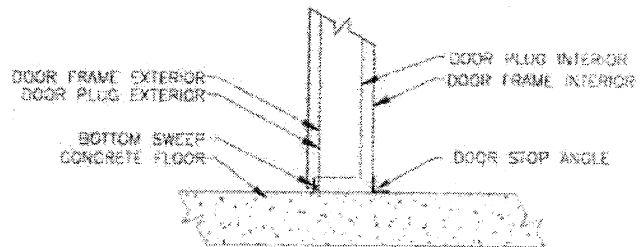
# Floor Standards & Details

## Wood Rail Walk-In Coolers & Freezers



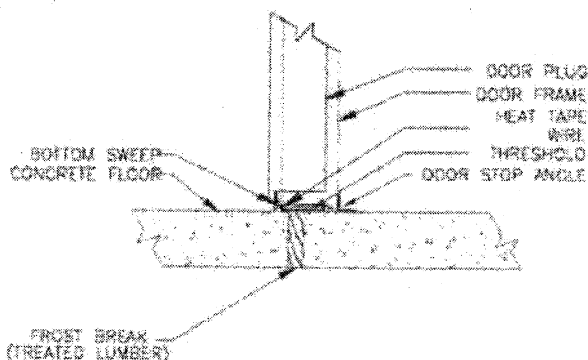
### Typical Floor Starter Panel

When a floor is required, panels are 4 5/8" thick, constructed with 4" of insulation and covered with 5/8" underlayment with .050 smooth aluminum. The floor is rated for a uniformly distributed load up to 800 pounds per square foot.



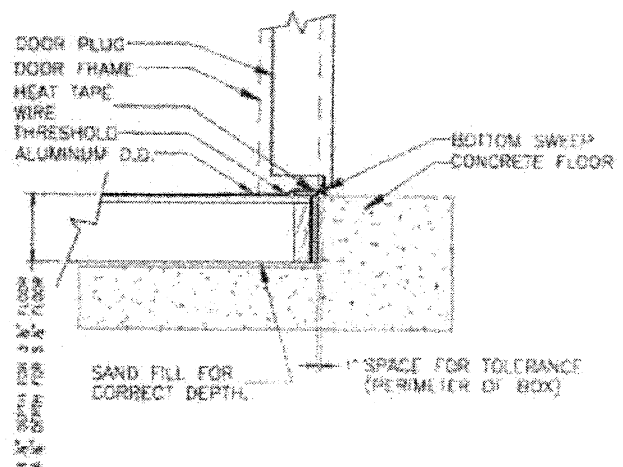
### Door Leg Anchor

All cooler or freezer door frames must be anchored to the interior floor with the door stop angle furnished by Carroll Coolers. Door and frame with concrete method is shown to the left. It is necessary to make sure the door jams are plumb, level and sealing properly prior to final fastening of the door stop angle.



### Freezer Threshold Without Floor

When a walk-in freezer does not have a pre-fabricated floor it is necessary to insulate under the concrete. (There are other drawings in this section that show the proper method to insulate under concrete.)

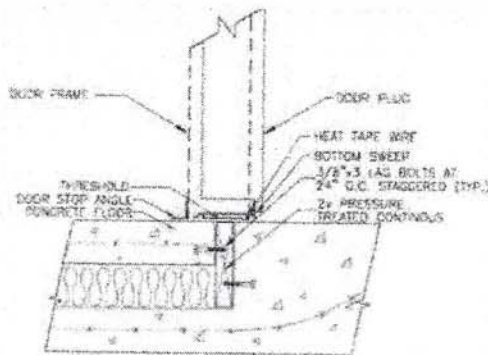


### Recessed Floor

Recessed floors are sometimes required. An example is shown here.

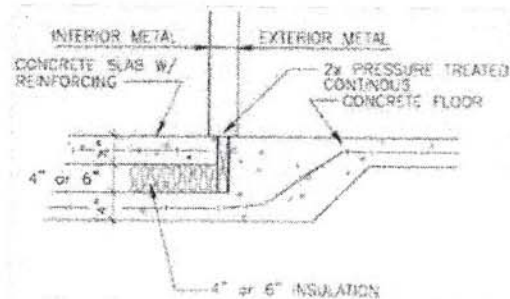
# Floor Standards & Details

## Wood Rail Walk-In Coolers & Freezers



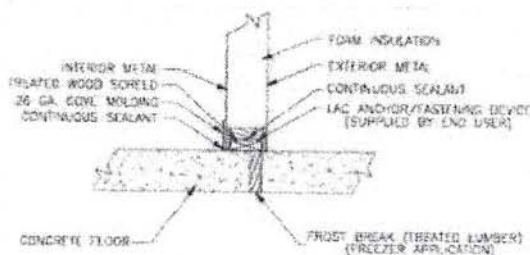
### Typical Concrete Insulated Thru Door

There are various methods of insulating a concrete floor. In some cases ventilation beneath the concrete is needed, depending on the temperature and the size of the walk-in. We will be glad to offer our assistance in the design of the insulated floor, but the final decision needs to be made by a qualified engineer that is familiar with local codes or conditions.



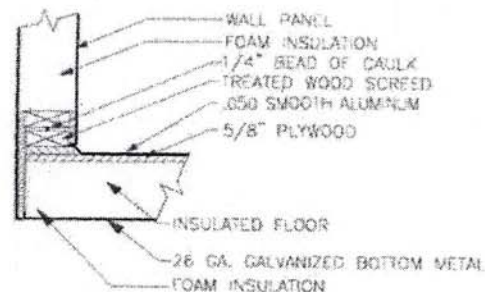
### Typical Concrete Insulated

Typically, when a floor is subjected to a heavy rolling load, a concrete surface is preferable. When installing a freezer, it is essential that the concrete be insulated. This illustration shows a typical method to insulate below the concrete wearing surface. (This suggested method does not address local codes or conditions. Consult a local engineer for final design.)



### Walk-In with Wood Screed

Most coolers do not need a manufactured floor. In these coolers, a treated wood screed is used so the walls can be fastened to the existing floor. Other methods such as vinyl screed are available.



### Walk-In with Insulated Floor

The floor is designed for a uniformly distributed load up to 800 pounds per square foot. Higher weight requirements require additional strength and are quoted on an individual basis.

Since 1987 the people at CCI have been committed to providing you with a top quality walk-in and the very best service in the industry - both before and after the sale.

At Carroll Coolers, we take great pride in serving our customers' needs in an accurate and timely fashion. Plus, we have the industry's best on-time shipping history for quality and satisfaction guaranteed.



**Carroll Coolers**  
19705 Highway 30 W  
Carroll, IA 51401  
Phone: 800.764.6834  
[www.carrollcoolers.com](http://www.carrollcoolers.com)

MADE IN THE USA





# Door Specifications

## Wood Rail Walk-In Coolers & Freezers

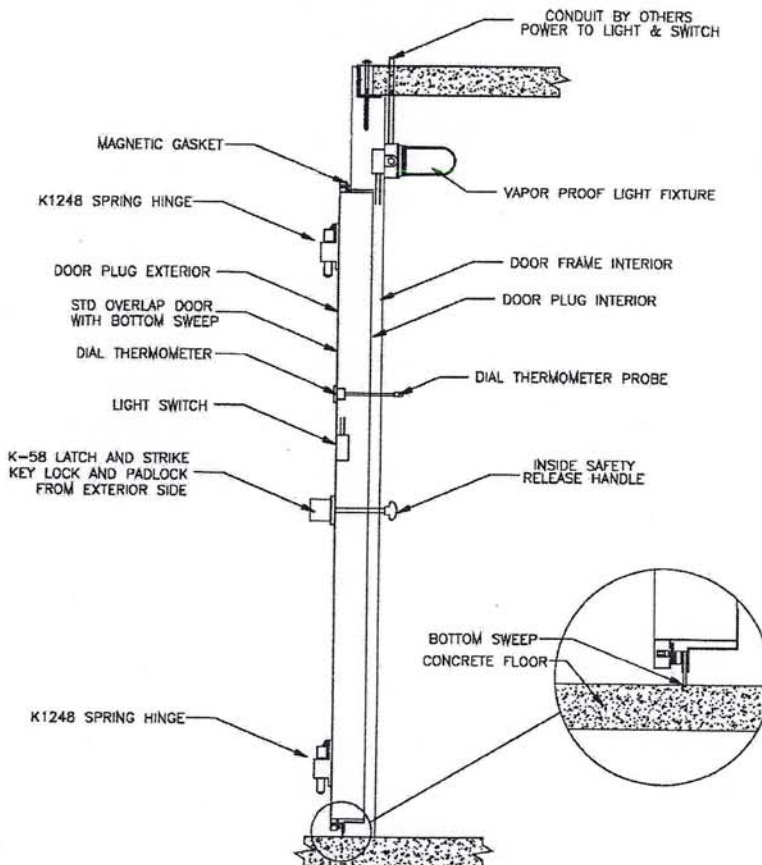
### Standard Door Sizes

Carroll Coolers walk-in coolers and freezers come standard with a 34"x78" door. The door can be hinged left or right. A variety of common sizes are listed below. Other sizes are available upon request.

### Overlap Door Dimensions

36" x 78"
36" x 84"
48" x 78"
48" x 84"
54" x 78"
54" x 84"
60" x 78"
60" x 84"

### Typical Cross Section of Door



### Thresholds

Carroll Coolers standard threshold is made of 1/8" aluminum. All freezers have a threshold, even if the freezer does not have a Carroll Coolers furnished floor. When the cooler has a floor, a 1/8" aluminum threshold is furnished. When the cooler does not have a floor, a threshold is not needed and is not furnished unless requested.

Since 1987 the people at CCI have been committed to providing you with a top quality walk-in and the very best service in the industry - both before and after the sale.

At Carroll Coolers, we take great pride in serving our customers' needs in an accurate and timely fashion. Plus, we have the industry's best on-time shipping history for quality and satisfaction guaranteed.



### Carroll Coolers

19705 Highway 30 W  
Carroll, IA 51401

Phone: 800.764.6834

[www.carrollcoolers.com](http://www.carrollcoolers.com)

MADE  
IN THE USA



CCIWI-PS (7/18)



## CONFLICT OF INTEREST

It shall be a breach of ethical standards for any employee with procurement authority to participate directly in any proceeding or application; request for ruling or other determination; claim or controversy; or other particular matter pertaining to any contract or subcontract, and any solicitation of proposal therefore, in which to his/her knowledge:

- (a) (S)He, or any member of his/her immediate family, has a financial interest herein: or
- (b) a business or organization which (s)he or any member of his/her immediate family has a financial interest as an officer, director, trustee, partner or employee, is a party; or
- (c) any other person, business, or organization with whom (s)he or any member of his/her immediate family is negotiating or had an arrangement concerning prospective employment is a party direct or indirect participation shall include, but not limited to, involvement through decision, approval, disapproval, recommendation, preparation of any part of a purchase request, influencing the content of any specification or purchase standard, rendering of advice, investigation, auditing or in any other advisory capacity.

It is a violation of Kentucky law for any board member or employee, or a member of their immediate family, to have a pecuniary interest either directly or indirectly in an amount exceeding \$25.00 per year in any purchase of goods or services by the board of education or any school thereof. Violation of this provision subjects the board member or employee to forfeiture of their position and/or employment with the school system.

I, hereby certify that no member of my immediate family is an employee or board member of the Bullitt County Board of Education.

Signature

Date

KRS 156.480

OAG 80 32

Model Procurement Code 45A.455

**NOTE:** THIS CERTIFICATION MUST BE SIGNED AND ATTACHED TO THE BID FORM IN ORDER FOR YOUR BID TO BE QUALIFIED.

## CERTIFICATION OF COMPLIANCE WITH SPECIFICATIONS

In compliance with the invitation to bid, and subject to all the conditions thereof, the undersigned hereby certifies that all items and/or services included in this bid shall be in compliance with all requirements and technical specifications included in this invitation to bid, except as noted below:

EXCEPTIONS:

NAME OF COMPANY Manning Bros. Food Service Equip. & Sales  
ADDRESS 210 Sandy Creek Rd, ZIP CODE 30607  
BY Stacey Landfield  
(signature)  
(PLEASE PRINT OR TYPE NAME) Stacey Landfield  
OFFICIAL TITLE Sales Manager, Kentucky Operations  
TELEPHONE NUMBER 859-396-4443 FAX# 706-549-8403  
DATE 12/21/2018

NOTE: THIS COMPLIANCE SHEET MUST BE SIGNED AND ATTACHED TO BID FORM TO QUALIFY YOUR BID.



Voyles, Angela <angela.voyles@bullitt.kyschools.us>

---

## Fwd: Central Restaurant Products Quotation - 11678529

1 message

---

**Murphy, Annette** <annette.murphy@bullitt.kyschools.us>  
To: Angela <angela.voyles@bullitt.kyschools.us>

Wed, Dec 19, 2018 at 2:06 PM

This is the quote for NB's freezer from Chas at Central Restaurant. I wanted to pass it along just in case anything happens & i'm not there tomorrow. I should be, but just in case.

----- Forwarded message -----

From: <chasp@centralrestaurant.com>

Date: Wed, Dec 19, 2018, 12:40 PM

Subject: Central Restaurant Products Quotation - 11678529

To: <Annette.murphy@bullitt.kyschools.us>

Please see the attachment for the quote you requested. If you have any questions, do not hesitate to call me. Thank you!

View your quote online: ([Click Here](#))

\*\*\*\*\*

Shop great deals on Premier Brands, featuring the biggest names in refrigeration, cooking, food prep, dishwashing and more. Complete selection of Manitowoc, Vulcan, Pitco, Hobart and Central Exclusive equipment. Hundreds of products in stock for same day shipping. Shop all at [centralrestaurant.com](http://centralrestaurant.com).


Chas Pressel  
Product Consultant  
Central Restaurant Products  
7750 Georgetown Road  
Indianapolis, IN 46268-4135  
Call 317-238-8252 or 800-222-5107, ext.8252  
Fax 317-238-8839  
[chasp@centralrestaurant.com](mailto:chasp@centralrestaurant.com)  
[www.centralrestaurant.com](http://www.centralrestaurant.com)

---

### Disclaimer

This e-mail and any files transmitted with it are confidential and intended solely for the use of the individual or company to whom they are addressed. If you have received this e-mail in error, please notify the sender immediately and delete this e-mail including all attachments from your system. Thank you.

---

 **18616\_45642\_QOE11678529.pdf**  
65K



7750 Georgetown Rd • Indianapolis, IN 46268  
Phone 800-222-5107 • Fax 800-882-0086

## Quotation

Quotation# 11678529  
Date 12/19/18  
Customer# 068916  
Page 1 of 1

Bullitt Co Schl Dist  
1040 Hwy 44 E  
Attn: Accts Payable  
Shepherdsville, KY 40165

Ship To:  
Eastside Middle School  
6925 Highway 44 East  
Attn: Cafeteria/Food Service  
Mount Washington, KY 40047

**Remit Payment To:** PO Box 78070 Indianapolis, IN 46278-0070

Quote Date	Quote Expires	Payment Terms	Customer PO	Contact		
12/10/18	06/17/19	GOVT Net 15 Days		Angela Voyles		
Product Consultant		Ship Via	Freight Terms			
Chas Pressel ext 8252		FEDEX GRD 3RD PTY #127540322	FOB	ORIGIN/PREPAID AND ADD		
Item	Product/Description	Quantity	Price	U/M	Extension	
1	W185-QUOTE NORLAKE WALK-IN QUOTE  DETAILS Quote NO NL1879909SO-A  DETAILS QUoted by Heather Kramer  DETAILS Quoted 12/19-18  DETAILS .  DETAILS .  DETAILS .  DETAILS .  ** Building Relationships...One Order at a Time! **	1	34953.84	EA	34953.84	
Merchandise		Handling	Misc. Charge	Tax	Freight	Quote Total
34,953.84		0.00	0.00	0.00	2,562.59	37,516.43

Accepted By (Printed): \_\_\_\_\_ Signature \_\_\_\_\_ Date: \_\_\_\_\_

By signing above you are agreeing all product and totals are accurate. If purchase is to be made via credit card, signature by cardholder is required indicating authorization to charge card and process order. All prices above are in US dollars. All payments to Central are required to be made in US dollars. \*\*\*\* Upon Receipt of your Merchandise \*\*\*\* Please inspect your delivery carefully. In the unfortunate event that something is damaged or has to be returned, please call your product consultant. Please save all shipping cartons and packaging. Claims must be reported within 15 days of receiving your delivery. All returns are subject to inspection before a credit is issued and may be assessed a restocking charge. Please return defective items promptly to avoid being charged for the replacement item. Custom manufactured, special orders and used items are not returnable.

\*\*\* Central is OPEN until 8:00 pm (Eastern Time) \*\*\*