



Bullitt County Public Schools

1040 Highway 44 East
Shepherdsville, Kentucky 40165

502-869-8000
Fax 502-543-3608
www.bullittschools.org

MEMO

TO: Jesse Bacon *JB*

FROM: Mark Mitchell *mm*

DATE: December 5, 2018

RE: Board Agenda Item – Approval of Design Drawings – Bullitt
Alternative Center – Studio Kremer Architects

Presented for Board approval are the design drawings relating to the Bullitt Alternative Center Security Upgrades project as prepared by Studio Kremer Architects. These are the architectural and electrical drawings required by KDE. Upon approval, the drawings will be sent to KDE for their approval and records.

I recommend the Board's approval of the design drawings prepared by Studio Kremer Architects.

Attachment: Architectural Drawings

B. Sutton

Security Upgrades at BULLITT ALTERNATIVE CENTER

381 High School Drive
Shepherdsville, Kentucky 40165

ska# 2018-41.01

BG# 19-047

100% CONSTRUCTION DOCUMENTS - DECEMBER 5, 2018



PROJECT TEAM:

ARCHITECT:

studio kremer architects
1231 S Shelby Street
Louisville, KY 40203
502.499.1100
CONTACT: Cate Noble Ward

OWNER:

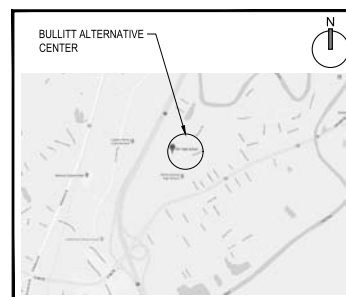
Bullitt County Public Schools
1040 Hwy 44 East
Shepherdsville, KY 40165
502.869.8000
CONTACT: Mark Mitchell

MEP ENGINEER:

CMTA Consulting Engineers
10411 Meeting Street
Louisville, KY 40059
502.326.3085
CONTACT: Jeremy Lewis



VICINITY MAP



CODE INFORMATION

BASED UPON 2013 KENTUCKY BUILDING CODE

USE GROUP: E (EDUCATIONAL)

CONSTRUCTION TYPE: II.B

LIST OF DRAWINGS:

COVER SHEET

ARCHITECTURAL:

A1.1 FLOOR PLANS AND DETAILS

MECHANICAL:

M1.0 MECHANICAL NOTES AND FLOOR PLANS

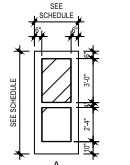
ELECTRICAL:

E1.0 ELECTRICAL LEGEND
E2.0 ELEC DEMO - PARTIAL 1ST FLOOR
E3.0 LIGHTING/POWERS - PARTIAL 1ST FLOOR

NOT FOR CONSTRUCTION

DOOR AND FRAME SCHEDULE

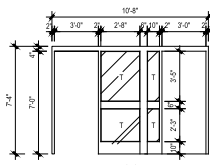
Door No.	Door Size					Frame Size			Details			Remarks	Hardware Set
	W	H	T	MAT'L	FIN. TYPE	MAT'L	FIN.	TYPE	HEAD	JAMB	SILL		
6TH GRADE CLASSROOMS & STORAGE													
D100	(2) 3'-0"	7'-0"	1 3/4"	H.M.	PTD	A	HM	PTD	1.2	--	--	--	E01
D129A	3'-0"	7'-0"	1 3/4"	H.M.	PTD	A	HM	PTD	1.1	--	--	--	E02
D129B	3'-0"	7'-0"	1 3/4"	H.M.	PTD	A	HM	PTD	1.1	--	--	--	E03



SEE SCHEDULE FOR MATERIAL
w/ 1/4" SAFETY GLAZING (AT INTERIOR DOORS)
PANO DEVICES WHERE SCHEDULED

DOOR TYPES

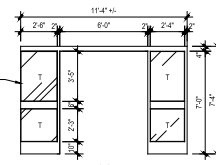
Scale: 1/4" = 1'-0"



SEE FRAME TYPE 1.1 FOR MILLION

FRAME TYPES

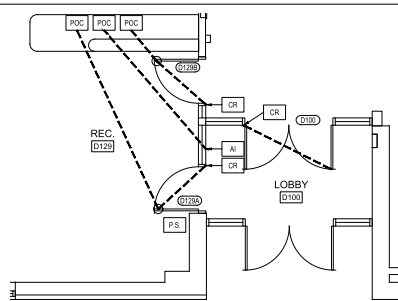
Scale: 1/4" = 1'-0"



SEE FRAME TYPE 1.1 FOR MILLION

FRAME TYPES

Scale: 1/4" = 1'-0"



FOR G.C. REFERENCE ACCESS CONTROL DIAGRAM

Scale: 1/4" = 1'-0"

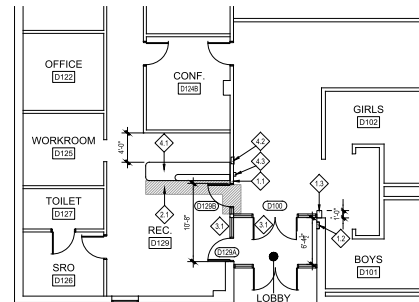
DOOR ACCESS CONTROL NOTES:

- ACCESS CONTROL EQUIPMENT AND INSTALLATION BY BOPS TECHNOLOGY DEPARTMENT (OWNER).
- G.C. TO COORDINATE ROUTING OF LOW-VOLTAGE CABLING ABOVE CEILING AND THROUGH H.M. STOREFRONT WITH BOPS TECHNOLOGY FOR ACCESS CONTROLS.
- G.C. TO ARRANGE A PRE-CONSTRUCTION MEETING WITH THE ELECTRICAL CONTRACTOR, ENGINEER, ARCHITECT AND BOPS TECHNOLOGY TO DISCUSS ROUTING TO ACCESS CONTROL DEVICES PRIOR TO INSTALLATION OF NEW H.M. STOREFRONT AND DOORS.

END OF ACCESS CONTROL GEN. NOTES

ACCESS CONTROL LEGEND / NOTES:

- CR NEW CARD READER (D.F.O.) - MOUNTED TO MILLION
- AI AI PHONE (AUDIO ONLY) (D.F.O.) - MOUNTED TO H.M. HORIZONTAL MILLION
- P.S. 10 AMP POWER SUPPLY (D.F.O.) - MOUNTED ABOVE CEILING - SEE ELECTRICAL DRAWINGS FOR CONNECTIONS.
- DASHED LINE INDICATES POINT OF CONTROL FOR A.C. DEVICES
- POC POINT OF CONTROL AT RECEPTION DESK FOR EACH DOOR/DEVICE



NEW WORK FLOOR PLAN

Scale: 1/8" = 1'-0"

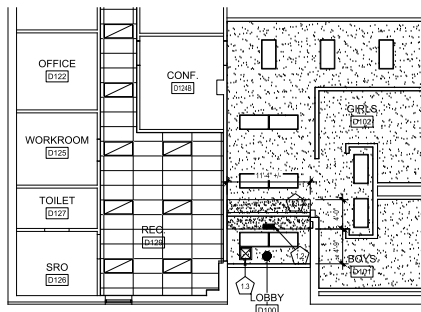
GENERAL NOTES:

- WORK THAT IS TO REMAIN IS SHOWN LIGHT AND SOLID AND WORK THAT IS NEW IS SHOWN DARK AND SOLID.
- INTERIOR DIMENSIONS (FOR BLOCK / METAL STUD WALLS) SHALL BE FROM FINISH WALL FACE TO FINISH WALL FACE. NOMINAL DIMENSIONS ARE GIVEN - SLIGHT FIELD ADJUSTMENT MAY BE REQUIRED.
- UNLESS OTHERWISE NOTED PROVIDE BULLNOSE UNITS AT ALL EXPOSED CONCRETE BLOCK CORNERS, SILLS AND AT DOOR AND WINDOW OPENINGS - INCLUDING ALL PATCHED WALLS. NOTE THAT ALL BULLNOSE BLOCK SHALL START 8" FROM THE FLOOR - FIRST OF CMU TO HAVE STRAIGHT EDGES.
- PATCH ALL FLOORS AND PATCH/PAINT ALL WALLS WHERE WALL MOUNTED EQUIPMENT IS REMOVED.
- ALL WALLS AROUND NEW DOOR FRAMES TO BE PAINTED TO MATCH EXISTING COLOR.
- INSTALL NEW RESILIENT WALL BASE AND FLOORING (TO MATCH EXISTING) AT AREAS OF NEW WORK.

END OF CONSTRUCTION GEN. NOTES

CONSTRUCTION NOTES:

- WHERE EXISTING PARTITION HAS BEEN REMOVED OR NEW OPENING IS CREATED, PATCH ALL ADJACENT AND DISTURBED SURFACES TO MATCH EXISTING CONSTRUCTION. IF MASONRY, MATCH EXISTING BOND PATTERN AND TOOL JOINTS TO MATCH ADJACENT CONSTRUCTION - TOOTH INTO EXISTING MASONRY. PAINT.
- PATCH WALL AT REMOVED F.E. CABINET.
- NEW 8" CMU BLOCK WALL.
- NEW VCT FLOORING INDICATED AT HATCHED AREAS WHERE RECEPTION DESK WAS MOVED AND NEW DOOR ADDED.
- NEW HOLLOW METAL DOOR AND STOREFRONT FRAME - REFER TO DOOR SCHEDULE & ELEVATIONS FOR DESCRIPTION.
- EXISTING RECEPTION DESK AND ASSOCIATED BASE FILE CABINETS RELOCATED TO NEW LOCATION, AS SHOWN.
- EXISTING FIRE EXTINGUISHER CABINET RELOCATED TO NEW LOCATION, AS SHOWN.
- EXISTING SUGGESTION BOX RELOCATED TO NEW LOCATION, AS SHOWN.
- REINSTALL EXISTING MIRROR IN SAME LOCATION.
- CONSTRUCTION NOTES CONTINUED ON NEXT SHEET



NEW WORK REFLECTED CEILING PLAN

Scale: 1/8" = 1'-0"

GENERAL CEILING NOTES:

- ALL EXISTING LIGHT FIXTURES TO REMAIN IN LOCATION SHOWN - FIXTURES SHOWN FOR REFERENCE.
- REFER TO MECHANICAL / ELECTRICAL DRAWINGS FOR ADDITIONAL WORK AT AND ABOVE EXISTING CEILINGS.

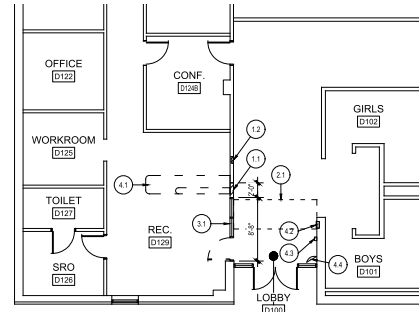
END OF GENERAL DEMOLITION NOTES

REFLECTED CEILING LEGEND / NOTES:

- EXISTING 2x4 SUSPENDED CEILING
- EXISTING GYPSUM WALL BOARD CEILING, SOFFIT OR BULKHEAD PAINT AT DISTURBED AREAS, COMPLETE
- EXISTING 2x4 LIGHT FIXTURE - SEE ELECTRICAL DRAWINGS
- EXISTING 2x4 SURFACE MOUNT LIGHT FIXTURE - SEE ELECTRICAL DRAWINGS
- EXISTING DIFFUSER

CEILING NOTES:

- PATCH 1-HOUR RATED GWS CEILING TO EXTENTS SHOWN FOR INSTALLATION OF NEW HOLLOW METAL STOREFRONT FRAMING.
- NEW SUPPLY DIFFUSER - SEE MECHANICAL DRAWINGS FOR SIZE AND DETAILS.
- NEW UNIT HEATER SUPPLY DIFFUSER - SEE MECHANICAL DRAWINGS FOR SIZE AND DETAILS.



DEMOLITION FLOOR PLAN

Scale: 1/8" = 1'-0"

GENERAL DEMOLITION NOTES:

- ALL MATERIAL TO BE REMOVED IS TO BE DISPOSED OF IN A LAWFUL MANNER.
- COORDINATE ALL MECHANICAL AND ELECTRICAL CUTTING AND PATCHING w/ MEP DRAWINGS.
- REFER TO MECHANICAL / ELECTRICAL DRAWINGS FOR REMOVAL OR RELOCATION OF WALL MOUNTED EQUIPMENT.

END OF GENERAL DEMOLITION NOTES

DEMOLITION NOTES:

- NEATLY CUT EXISTING WALL FOR NEW OPENING, DOOR OR WINDOW (SHORE AS REQUIRED). REFER TO MASONRY DETAILS FOR NEW LIMITS TO SUPPORT MASONRY TO REMAIN. IF ANY UTILITIES ARE ENCOUNTERED, NOTIFY ARCHITECT / ENGINEER FOR DIRECTION. IF MASONRY VENEER, SALVAGE BRICK FOR RE-USE.
- NEATLY CUT WALL FOR RELOCATED FIRE EXTINGUISHER CABINET.
- CEILING
 - NEATLY CUT EXISTING GWS CEILING TO EXTENTS SHOWN FOR INSTALLATION OF NEW HOLLOW METAL STOREFRONT FRAMING. REFER TO NEW WORK PLAN FOR PATCHING.
- OPENINGS
 - REMOVE EXISTING DOOR / DOOR FRAME / STOREFRONT FRAMING HARDWARE.
 - DISPOSE OF DOOR / DOOR FRAME.
 - HARDWARE TO BE SALVAGED AND RETURNED TO OWNER.
 - IF HOLD OPENERS ARE REMOVED, REPAIR VOIDS IN WALLS TO MATCH ADJACENT CONSTRUCTION.
- CASEWORK & EQUIPMENT
 - EXISTING RECEPTION DESK AND ASSOCIATED BASE FILE CABINETS TO BE RELOCATED. SEE NEW WORK PLAN FOR NEW LOCATION.
 - EXISTING FIRE EXTINGUISHER CABINET TO BE RELOCATED. SEE NEW WORK PLAN FOR NEW LOCATION.
 - EXISTING SUGGESTION BOX TO BE RELOCATED. SEE NEW WORK PLAN FOR NEW LOCATION.
 - UNINSTALL EXISTING MIRROR AND GIVE TO SAC SCHOOL STAFF.

END OF DEMOLITION NOTES



studio kremer architects
1231 S Shelby St, Louisville, KY 40203
TEL 502.495.1100 FAX 502.495.1101



FLOOR PLANS
SECURITY UPGRADES AT
BULLITT ALTERNATIVE CENTER
3811 HIGH SCHOOL DRIVE
SHEPHERDSVILLE, KENTUCKY 40365

BG# 19-047

DATE: 12.05.2018
DRAWN BY: CNW
CHECKED BY: CNW
REVISIONS:

2018-41.01

A1.1

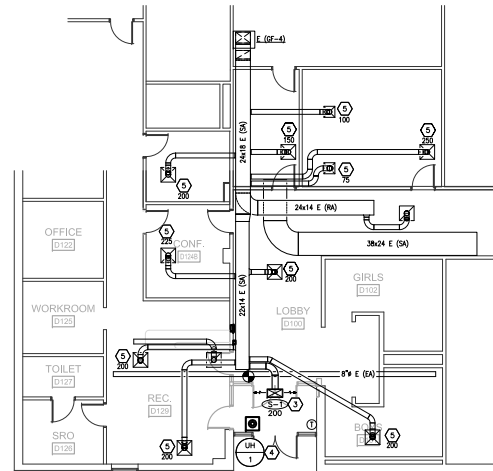
100% CONSTRUCTION DOCUMENTS

GENERAL NOTES (APPLICABLE TO ALL DRAWINGS)

1. EACH CONTRACTOR, SUPPLIER AND, OR MANUFACTURER SHALL REFER TO ALL DOCUMENTS PERTAINING TO THIS PROJECT AND COORDINATE ACCORDINGLY SO AS TO ENSURE ADEQUACY OF FIT, COMPLIANCE WITH SPECIFICATIONS, PROPER VOLTAGE AND CURRENT CHARACTERISTICS AND AVOID CONFLICT WITH ANY OTHER BUILDINGS SYSTEMS. VERIFY SAME WITH SHOP DRAWINGS.
2. ALL OFFSETS, TURNS, FITTINGS, TRIM, DETAIL, ETC., MAY NOT BE INDICATED, BUT SHALL BE PROVIDED AS REQUIRED. ADDITIONAL ALLOWANCES SHALL BE INCLUDED FOR SAME AT EACH PROPOSER'S DISCRETION.
3. OBSERVE ALL APPLICABLE CODES, RULES AND REGULATIONS (CITY, COUNTY, LOCAL, STATE, FEDERAL, MUNICIPALITY, UTILITY COMPANY, OSHA, ETC.).
4. ALL SYSTEMS, EQUIPMENT AND MATERIALS ARE TO BE INSTALLED IN A NEAT AND WORKMANLIKE MANNER. WORK NOT DONE SO SHALL BE REMOVED AND REINSTALLED SATISFACTORILY.
5. WHERE MOUNTING HEIGHTS ARE NOT INDICATED OR ARE IN CONFLICT WITH ANY OTHER BUILDING SYSTEM, CONTACT THE ENGINEERS BEFORE INSTALLATION. REFER ALSO TO ARCHITECTURAL WALL, INTERIOR AND EXTERIOR WALL ELEVATIONS, CEILING HEIGHTS AND OTHER DETAIL OF THESE DOCUMENTS.
6. DO NOT SCALE FROM DRAWINGS, PRINTING DISTORTS SCALE. WORK SHALL BE Laid OUT FROM DIMENSIONED DRAWINGS, OR DIMENSIONS SUPPLIED TO THE CONTRACTOR.
7. THIS CONTRACTOR SHALL BE RESPONSIBLE FOR ALL CUTTING AND PATCHING REQUIRED FOR HIS WORK. ALL CUTTING AND PATCHING SHALL MATCH ADJACENT SURFACES.
8. THESE DRAWINGS ARE ACCURATE TO THE BEST OF OUR KNOWLEDGE, HOWEVER LOCATIONS, DEPTHS, ELEVATIONS AND SIZES WERE TAKEN FROM DIFFERENT SOURCES AND ARE SUBJECT TO DEVIATION. THE CONTRACTOR SHALL ASSUME SOME DEVIATIONS AND INCLUDE OFFSETS, ADDITIONAL PIPING, ETC. AT THE TIME OF BID.
9. WHERE PENETRATING MATERIALS USED FOR WEATHERPROOFING THE BUILDING, MAKE SUCH PENETRATIONS IN A WAY THAT WILL NOT VOID OR DIMINISH THE WARRANTY OR INTEGRITY IN ANY WAY. COORDINATE ALL SUCH PENETRATIONS WITH THE FACILITY ENGINEER.
10. ADVISE THE ENGINEERS OF ANY CONFLICTS, ERRORS, OMISSIONS, ETC. AT LEAST TEN DAYS PRIOR TO BID DATE, TO ALLOW CLARIFICATION BY WRITTEN ADDENDUM.
11. DEVIATION FROM SPECIFICATIONS OR PLANS REQUIRES PRIOR WRITTEN APPROVAL FROM THE ENGINEERS AND MUST BE SUBMITTED IN WRITING NO LATER THAN TEN DAYS PRIOR TO THE BID DATE.
12. COORDINATE THE LOCATION OF DRAINS, ELECTRICAL OUTLETS, ETC. WITH ALL MECHANICAL ROOM EQUIPMENT, ETC. PRIOR TO COMMENCING INSTALLATION. WORK NOT SO COORDINATED SHALL BE REMOVED AND PROPERLY INSTALLED AT THE EXPENSE OF THE RESPONSIBLE CONTRACTOR(S).
13. THE PURPOSE AND INTENT OF ALL THE DOCUMENTS PERTAINING TO THIS PROJECT IS TO PROVIDE A COMPLETE, FUNCTIONAL, SAFE, NEW FACILITY. ANYTHING LESS SHALL BE UNACCEPTABLE.
14. ANY VIBRATING, OSCILLATING OR OTHER NOISE OR MOTION PRODUCING EQUIPMENT SHALL BE ISOLATED FROM SURROUNDING SYSTEMS IN AN APPROVED MANNER. NOISE OR STRUCTURALLY DAMAGING INSTALLATIONS SHALL BE SATISFACTORILY REPLACED OR REPAIRED AT THE INSTALLING CONTRACTOR'S EXPENSE. THE FINAL DECISION ON THE SUITABILITY OF A PARTICULAR INSTALLATION'S ACCEPTABILITY SHALL BE THAT OF THE ENGINEER.
15. INSTALL EQUIPMENT, MATERIALS, ETC. IN STRICT ACCORD WITH MANUFACTURER'S RECOMMENDATIONS AND DIRECTIONS. IF IN CONFLICT WITH THE DESIGN INDICATED IN CONTRACT DOCUMENTS, ADVISE THE ENGINEERS PRIOR TO INSTALLATION FOR CLARIFICATION.
16. ALL SUPPORTS FOR EQUIPMENT, DEVICES OR FIXTURES SHALL BE UNIQUE, FROM THE BUILDING STRUCTURE. DO NOT SUPPORT WORK FROM OTHER TRADES, EQUIPMENT OR SUPPORTS WITHOUT WRITTEN PERMISSION FROM THE ENGINEER AND CONSENT OF THE OTHER TRADE, IN WRITING.
17. DEVIATIONS IN SIZE, CAPACITIES, FIT, FINISH, ETC. FOR EQUIPMENT FROM THAT PRIME SPECIFIED SHALL BE THE RESPONSIBILITY OF THE PURCHASER OF THAT EQUIPMENT. ANY PROVISIONS REQUIRED TO ACCOMMODATE A DEVIATION, WHETHER APPROVED BY THE ENGINEERS OR NOT, SHALL BE THE RESPONSIBILITY OF THE PURCHASER.
18. THE CONTRACTORS FOR THIS CONSTRUCTION ARE RESPONSIBLE FOR THE COORDINATION, APPEARANCE, SCHEDULING AND TIMELINESS OF THE WORK OF ALL TRADES, SUPPLIERS, INSTALLERS, ETC.
19. VALVES OR ANY MECHANICAL/ELECTRICAL ITEM SHALL NOT BE LOCATED ABOVE A HARD CEILING. IF THIS IS NOT POSSIBLE, THEN AN APPROPRIATELY SIZED ACCESS DOOR SHALL BE PLACED UNDER THE ITEM TO ALLOW EASY MAINTENANCE AND ADJUSTMENT.
20. THE CONTRACTORS SHALL ENSURE PROPER COORDINATION BETWEEN ALL TRADES SUCH THAT CONDENS, PIPING, ETC. DO NOT BLOCK ACCESS TO VALVES, EQUIPMENT, ACCESS DOORS, ETC. ITEMS THAT HAVE BEEN INSTALLED WHERE ACCESS IS COMPROMISED SHALL BE RELOCATED AT THE CONTRACTOR'S EXPENSE.
21. ALL WIRING SHALL BE PLENUM RATED.

ELECTRIC UNIT HEATER	
SYMBOL	UH-1
MANUF. & MODEL	MARVEL 3480 SERIES
MOUNTING TYPE	RECESSED CEILING
NOMINAL AIRFLOW (CFM)	425
ELECTRICAL CONNECTION	208V / 3ø / 60
HEATING CAPACITY	
EAT	37°F
TOTAL HEAT (KW)	5.0
FLA	13.9
REMARKS	1,2,3,4,5,6

- REMARKS:
1. PROVIDE WITH MOUNTING HARDWARE.
 2. REMOTE THERMOSTAT, SEE PLANS.
 3. WHITE POWDER COATED FINISH ON HEAVY GAUGE STEEL HOUSING.
 4. THERMAL OVERHEAT PROTECTION.
 5. PROVIDE WITH FACTORY LOWVOLTAGE DIFFUSER WITH INDIVIDUALLY ADJUSTABLE BLADES.
 6. PROVIDE WITH FACTORY INSTALLED DISCONNECT SWITCH.



MECHANICAL NEW WORK FLOOR PLAN

Scale: 1/8" = 1'-0"

MECHANICAL LEGEND

AFC	ABOVE FINISHED CEILING	20X12 SA	SUPPLY AIR DUCT - INSIDE DIMENSION - 20"X12"X12"VERT. (TURNED UP/DOWN)
AF	ABOVE FINISHED FLOOR	20X12 RA	RETURN AIR DUCT - INSIDE DIMENSION - (TURNED UP/DOWN)
AF	BELOW FINISHED FLOOR	20X12 EA	EXHAUST AIR DUCT - INSIDE DIMENSION - (TURNED UP/DOWN)
TYP	TYPICAL	20X12 OA	OUTSIDE AIR DUCT - INSIDE DIMENSION - (TURNED UP/DOWN)
NTS	NOT TO SCALE		
NO	NORMALLY OPEN		
NC	NORMALLY CLOSED		
TC	TEMPERATURE CONTROL CONTRACTOR		
		AD	FLEXIBLE DUCT
		M	ACCESS DOOR IN BOTTOM OF DUCT
		R	OPPOSED BLADE DAMPER (MOTORIZED)
			VOLUME DAMPER (MANUAL)
			FIRE DAMPER WITH DUCT MOUNTED ACCESS DOOR
			TEMPERATURE SENSOR
			DUCT-MOUNTED SMOKE DETECTOR
			DEMOLITION TO POINT
			DEMOLITION TO POINT AND CAP
			CONNECT TO EXISTING

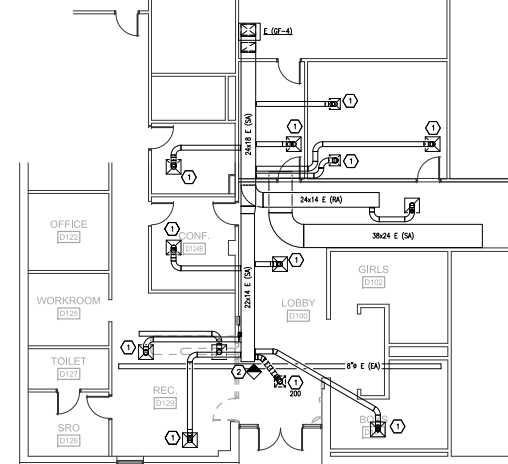
REGISTERS, GRILLES, AND DIFFUSERS

SYMBOL	MANUFACTURER & MODEL	MATERIAL & TYPE	CFM RANGE	INLET DUCT SIZE	FACE SIZE	NECK SIZE	REMARKS
S-1	TITUS TDC-AA A2	EXTRUDED ALUMINUM LOUVERED FACE TWO-WAY THROW	0-400	10"ø	26X14	24"X12"	1, 2, 3

- REMARKS:
1. PROVIDE WITH FACTORY INSULATED SUPPLY PLENUM WITH INLET NECK SIZE LISTED. TAP ROUND DUCT INTO FULL SIZE SUPPLY PLENUM.
 2. ARCHITECT TO SELECT COLOR/FINISH.
 3. ACCEPTABLE MANUFACTURERS: TITUS, PRICE, METALAIR.

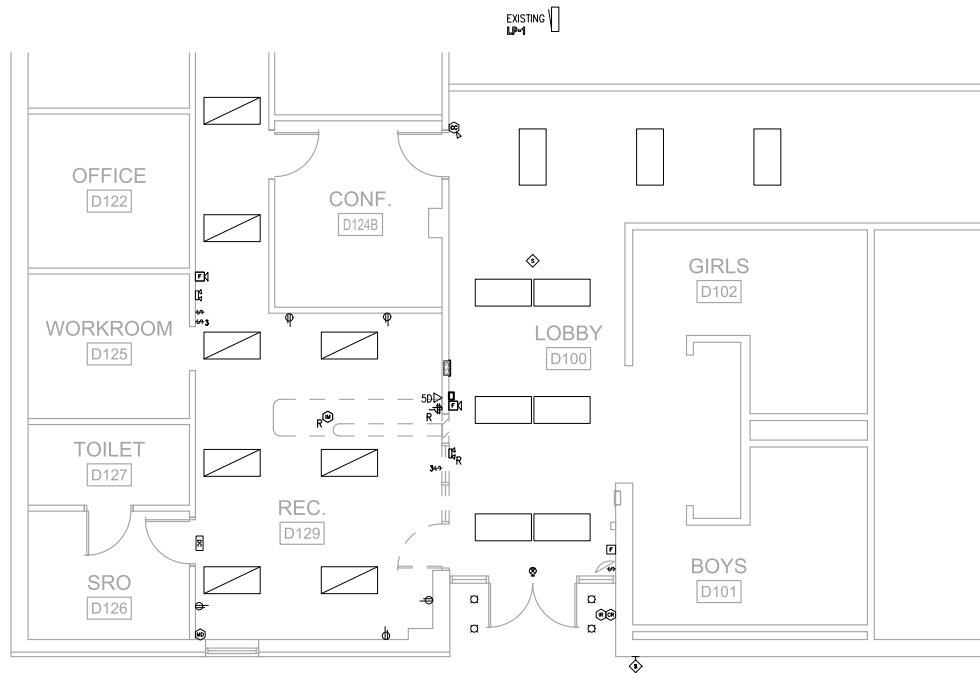
TAG NOTES

1. PRIOR TO DEMOLITION, CONTRACTOR SHALL RECORD AIRFLOW MEASUREMENT AT EXISTING SUPPLY GRILLE AND REPORT MEASUREMENT TO ENGINEER.
2. DEMOLISH EXISTING GRILLE AND DUCTWORK BACK TO MAIN.
3. INSTALL NEW GRILLE IN EXISTING CEILING. PATCH AND REPAIR CEILING OPENING AROUND NEW GRILLE TO MATCH EXISTING ADJACENT SURFACES. PROVIDE HIGH EFFICIENCY BOOT TOP WITH VOLUME DAMPER AT CONNECTION TO DUCT MAIN. PROVIDE DIFFUSER WITH ADJACENT FIRE DAMPER IN NECK.
4. MOUNT NEW UNIT HEATER IN CEILING. SUPPORT FROM STRUCTURE PER MANUFACTURER'S INSTRUCTIONS. INTERLOCK HEATER WITH HEATER THERMOSTAT ON WALL. HEATER SHALL ENERGIZE WHEN SPACE IS BELOW 70°F WALL. PROVIDE THERMOSTAT WITH LOCKABLE CLEAR POLYCARBONATE COVER. PROVIDE HEATER WITH CEILING MOUNTING KIT AND ALL MATERIALS AND HARDWARE REQUIRED FOR MOUNTING. PROVIDE ALL LOW VOLTAGE WIRING REQUIRED TO PERFORM SEQUENCE OF OPERATIONS AS INDICATED.
5. REBALANCE EXISTING DIFFUSER TO AIRFLOW INDICATED.



MECHANICAL DEMOLITION FLOOR PLAN

Scale: 1/8" = 1'-0"



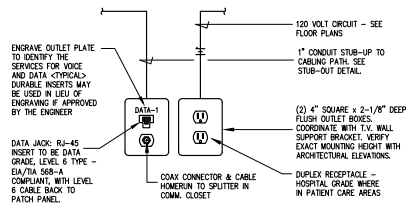
01 PARTIAL FLOOR PLAN -
ELECTRICAL DEMOLITION
E2.0 1/8" = 1'-0"

GENERAL DEMOLITION NOTES :

- DOTTED LINES INDICATE ITEMS FOR REMOVAL (U.O.N.) AND THIN SOLID LINES INDICATE EXISTING ITEMS TO REMAIN.
- THE CONTRACTOR SHALL MAINTAIN THE CONTINUITY OF EXISTING CIRCUITS THAT CONTAIN DEVICES OR EQUIPMENT THAT ARE TO REMAIN. WHEN DEMOLITION OF AN ELECTRICAL DEVICE (OR CIRCUIT) IS INDICATED ON THE DRAWINGS - THE CONTRACTOR SHALL ENSURE THAT OTHER DEVICES OR EQUIPMENT "UPSTREAM" OR "DOWNSTREAM" ON THE CIRCUITS SHALL REMAIN IN "IN-SERVICE" WORKING ORDER. "LEFT-OVER" CIRCUIT BREAKERS SHALL REMAIN, BE SWITCHED TO OFF POSITION, AND BE LABELED AS SPARES IN THEIR PANELS - PROVIDE NEW TYPED/WRITTEN DIRECTORIES FOR ALL PANELS AFFECTED.
- LOCATIONS OF DEVICES, CONNECTIONS, ETC., INDICATED ON THIS DRAWING WERE TAKEN FROM VARIOUS SOURCES. THEY ARE DIAGRAMMATIC ONLY AND ARE SUBJECT TO VARIATION FROM EXISTING CONDITIONS. CERTAIN EXISTING ELEMENTS MAY NOT BE INDICATED AT ALL. THE CONTRACTOR PROPPOSING TO DO ANY PART OF THE WORK INDICATED HEREON SHALL VISIT THIS SITE AND DETERMINE TO HIS SATISFACTION THAT THEY MAY COMPLETE ALL WORK REQUIRED FOR THE BID WHICH HE PROPOSES.
- REMOVE ALL ASSOCIATED BACKBORES, CONDUIT AND CONDUCTORS FOR DEVICES / FIXTURES / ETC. BEING REMOVED (BACK TO SOURCE). WHETHER INDICATED OR NOT (U.O.N.), CONTRACTOR SHALL PATCH AND REPAIR ANY EXISTING WALLS, FLOORS OR CEILINGS WHERE DEVICES ARE SHOWN TO BE REMOVED (PATCH AND REPAIR TO RECEIVE NEW FINISHES - SEE ARCHITECTURAL PLANS).
- COORDINATE DISPOSAL OF ALL FIXTURES, DEVICES, ETC. (INDICATED FOR DEMOLITION) WITH OWNER. TURN OVER ITEMS REMOVED TO OWNER AT THEIR OPTION.
- COORDINATE WITH OTHER TRADES FOR THE REMOVAL AND/OR RELOCATION OF ELECTRICAL DEVICES AND CONNECTIONS ASSOCIATED WITH THEIR EQUIPMENT.
- PROVIDE TEMPORARY EMERGENCY EXIT LIGHTS AT CONSTRUCTION BARRIERS AS REQUIRED.
- CONTRACTOR SHALL PATCH AND REPAIR ALL EXISTING WALLS / CEILINGS AS REQUIRED WHERE DEVICES ARE BEING REMOVED OR INSTALLED.
- UNUSED/ABANDONED CONDUCTORS DISCOVERED ABOVE ACCESSIBLE CEILINGS SHALL BE REMOVED IN ACCORDANCE WITH NEC REQUIREMENTS.
- EXISTING ELECTRICAL SYSTEMS IN CONFLICT WITH CONSTRUCTION SHALL BE RELOCATED TO PERMIT INSTALLATION OF DEVICES AND EQUIPMENT SHOWN ON PLANS.
- CONTRACTOR SHALL SEAL ALL EXISTING AND NEW PENETRATIONS OF BUILDING ENVELOPE (EXTERIOR WALLS, ROOF, ETC.) WATER-TIGHT AND AS APPROVED BY ARCHITECT AND ENGINEER. ROOFING SHALL BE RESTORED BY A LICENSED ROOFING CONTRACTOR BASED ON WRITTEN INSTRUCTIONS AND DETAILS FROM ROOFING MANUFACTURER AS REQUIRED TO MAINTAIN ROOF WARRANTY. REFER TO ARCHITECTURAL AND ENGINEERING PLANS AND SPECIFICATIONS FOR FURTHER REQUIREMENTS.
- DEVICES INDICATED WITH AN "N" SHALL BE RELOCATED, REMOVE, PROTECT, AND REINSTALL IN NEW LOCATION INDICATED ON NEW WORK PLANS. INTERCEPT AND EXTEND ALL EXISTING CABLE TO NEW LOCATION. CLEAN AND RE-LAMP RELOCATED LUMINAIRES.
- ALL EXISTING PANELS AFFECTED BY THIS CONTRACTOR'S WORK SHALL BE PROVIDED WITH NEW TYPE-WRITTEN PANEL DIRECTORIES AND INSERT SLEEVES. PANEL DIRECTORIES SHALL NOT USE ROOM NAMES OR NUMBERS FROM THESE DRAWINGS. DIRECTORIES SHALL BE DETAILED AND COORDINATED WITH OWNER'S SUFF. NUMBERS, PANEL ROOM NUMBERS, IT RACK NAMES, WORKSTATION DESIGNATIONS, ETC. UNUSED BREAKERS SHALL BE IN OFF POSITION.
- ALL ABANDONED CABLEING ABOVE CEILING SHALL BE REMOVED. PROVIDE NEW J-BLOCK SUPPORTS FOR EXISTING IN-SUPPORTED CABLEING TO REMAIN. COORDINATE WITH OWNER PRIOR TO DEMOLITION TO IDENTIFY EXISTING CABLEING TO REMAIN.
- RELOCATE JUNCTION BOXES AND OTHER EXISTING ITEMS REQUIRING ACCESS TO ACCESSIBLE LOCATIONS WHERE NEW WORK BY ANY TRADE WOULD MAKE SUCH ITEMS INACCESSIBLE.

TAGGED NOTES :

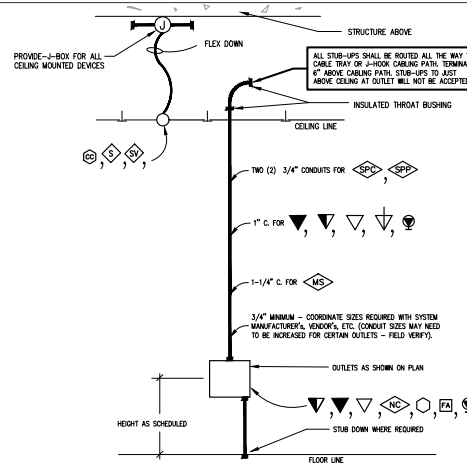
- NOT USED.



DETAIL OF TELEVISION OUTLET INSTALLATION
NO SCALE

LIGHT FIXTURE SCHEDULE

TYPE	DESCRIPTION	MODEL	LAMPS	REMARKS	VOLTAGE
X1	UNIVERSAL MOUNT, SINGLE FACE, EXIT SIGN WITH DIE CAST ALUMINUM HOUSING	LITHONIA #VSWIR COOPER EQUAL LIGHTOLIER EQUAL	LED LAMPING		UNV



- GENERAL NOTES :**
- EXTEND CONDUIT TO NEAREST WIRING PATH UNLESS CABLEING TERMINATES AT ANOTHER OUTLET IN THE SAME ROOM IN WHICH CASE, STUB CONDUIT OUT ABOVE THE ROOM'S SUSPENDED CEILING. REFER TO GENERAL NOTES LOCATED ON ALL SYSTEMS DRAWINGS. ACCESS CONTROL CONDUITS SHALL STUB ABOVE ACCESSIBLE CEILING FOR VENDOR FURNISHED ACCESS CONTROL CABLEING, ETC.
 - WHERE OPEN CABLEING IS INSTALLED WITHIN ENVIRONMENT AIR FLOWNINGS, SUCH CABLEING SHALL MEET NEC REQUIREMENTS FOR SUCH INSTALLATIONS.
 - LABEL BACK OF OUTLET BOXES AND RINGS OF CONDUIT WITH UNIQUE NUMBER TO IDENTIFY EACH STUB-UP. USE PERMANENT MARKER PEN, 3/4" HIGH LETTERS, MATCH NUMBER ON OUTLET BOX TO END OF CONDUIT.
 - INSTALL TELECOMMUNICATION AND CABLE TV OUTLETS WITHIN 4" OF POWER RECEPTACLE WHERE POWER RECEPTACLE IS SHOWN ON POWER PLANS IN SAME GENERAL LOCATION.
 - BACKBOXES MAY NOT BE SHARED BETWEEN POWER AND SYSTEMS DEVICES (E.G. WITH DIVIDERS).

ROUGHING-IN IN DETAIL FOR STUB-OUTS
NO SCALE

GENERAL NEW WORK NOTES (LIGHTING):

- REFER TO THE ARCHITECT'S REFLECTED CEILING PLANS, ELEVATIONS, AND CASEWORK DETAILS FOR EXACT LOCATIONS OF ALL WALL AND CEILING MOUNTED ELECTRICAL DEVICES.
- CONTRACTOR SHALL FOLLOW BRANCH CIRCUITING LAY-OUT, AS INDICATED ON THE FLOOR PLANS, WITH A MAXIMUM OF THREE (3) BRANCH CIRCUITS PER HORIZONTAL EACH BRANCH CIRCUIT SHALL BE PROVIDED WITH A DEDICATED NEUTRAL CONDUCTOR. DEDICATED NEUTRAL CONDUCTORS SHALL BE CONSIDERED NEUTRAL CARRYING. IF ADDITIONAL CONDUCTORS ARE RUN IN THE SAME CONDUIT WITH THOSE INDICATED, CONTRACTOR SHALL DERATE ALL CURRENT CARRYING CONDUCTORS PER N.E.C. ARTICLE 310.15, AND UPSEE CONDUIT AS REQUIRED PER N.E.C. 310.17 AND ANNEC C. MULTI-THREE BRANCH CIRCUITS AS DEFINED IN N.E.C. 90.0 / 2014 (CIRCUITS SHARING A COMMON NEUTRAL CONDUCTOR) SHALL NOT BE PERMITTED.
- LOCATE EXIT SIGNS FOR MAXIMUM VIEWING AREA TO IDENTIFY EGRESS PATHS AS INDICATED ON PLANS. COORDINATE LOCATIONS SUCH THAT ARCHITECTURAL FEATURES OR EQUIPMENT FROM OTHER TRADES DO NOT OBSTRUCT VIEW.

TAGGED NOTES :

- UTILIZE EXISTING CARD READER BACKBOX/ROUGH-IN AS REQUIRED FOR NEW OWNER FURNISH ACCESS CONTROL. PROVIDE NEW RACEWAY AT NEW DOOR TO ACCEPT ELECTRONIC HARDWARE, WIRING, ETC. UTILIZE EXISTING 120 POWER FOR SUPPLY NEW ABOVE CEILING POWER. COORDINATE WORK WITH BIDS-LT DEPARTMENT.
- EXISTING AL-PHONE SYSTEM TO BE RELOCATED (AT RECEPTION AREA). RELOCATION ACCOMPLISHED BY OWNER, COORDINATED BY THE CONTRACTOR.
- ROUTE # OF #12 CONDUCTORS AS INDICATED IN 3/4" CONDUIT TO NEW/SPARE 20A/1P BREAKER IN EXISTING PANEL INDICATED.
- ROUTE # OF #10 CONDUCTORS AS INDICATED IN 3/4" CONDUIT TO NEW/SPARE 30A/3P BREAKER IN EXISTING PANEL INDICATED.
- (1) NEW & (1) RELOCATED AL-PHONE MASTER STATION EQUIPMENT IS OWNER FURNISHED, OWNER INSTALLED. CONTRACTOR TO PROVIDE ALL WIRING-IN AND POWER.
- PROVIDE 3/4" CONDUIT STUB OUT TO ACCESSIBLE CEILING LOCATION AS COORDINATED WITH OWNER.

