



FIELD OBSERVATION REPORT

2018.10

■ TO:	Kenton County Board of Education 1055 Eaton Drive Ft. Wright, KY 41017	■ DATE:	2018.10.23
ATTENTION:	Mr. Rob Haney		
■ FROM:	Ralph Cooper rcooper@pca-arch.com 1881 Dixie Highway, Suite 130 Fort Wright, KY 41011 V: 859.431.8612 • F: 859.431.8611	■ PROJECT:	Kenton County School District Hinsdale Elementary
COPIES TO:	Mr. Danny Mann	PROJECT NO.:	2017-074

■ WE TRANSMIT THE ATTACHED ITEMS VIA: EMAIL

PURPOSE	<input type="checkbox"/> For your use	DISPOSITION	<input type="checkbox"/> No exceptions noted
	<input type="checkbox"/> As requested		<input type="checkbox"/> Exceptions noted, Revise as indicated.
	<input type="checkbox"/> For review and comment		<input type="checkbox"/> REJECTED: REVISE AND RESUBMIT
	<input type="checkbox"/> For information		
	<input checked="" type="checkbox"/> For record		
	<input type="checkbox"/> For approval		
	<input type="checkbox"/>		

COPIES	DATE	DESCRIPTION	PAGES
1	2018.10	Field Observation Report	14

Division 02: Site Work and Demolition

02.01: – No items noted.

Division 03: Concrete

03.01: – No items noted.

Division 04: Masonry

04.01: 2018.10.01 – Installation of the face brick and cast stone continues around the building. Most of the material has been installed. The surfaces still need to be cleaned and sealed.

04.02: 2018.10.08 – The cast stone masonry has been installed over the main entrance canopy. The stone still needs to be cleaned.

04.03: 2018.10.08 – Installation of the structural glazed tile is being completed in the Lobby.

Division 05: Metals

05.01: 2018.10.01 – Installation of the exterior metal handrails continues on the site walls.

05.02: 2018.10.23 – The majority of the stainless steel exterior handrails and guards have been installed.

Division 06: Carpentry

06.01: 2018.10.01 – Fire-retardant treated blocking is being installed for wall-mounted items.

06.02: 2018.10.23 – The blocking for the fire-extinguisher cabinet has been rough in.



Division 07: Thermal and Moisture Protection

07.01: 2018.10.01 – Wood blocking has been installed for the perimeter coping.

07.02: 2018.10.01 – The framing and weather barrier at the canopy over the main entry has been installed. The cast stone still needs to be installed.

07.03: 2018.10.08 – The sub-framing has been installed for the canopy ceiling.

07.04: 2018.10.08 – Installation of the asphalt built-up roofing is in progress.

07.05: 2018.10.23 – The exterior walls have been insulated.

07.06: 2018.10.23 – The intersection of perimeter roof deck and exterior walls have been insulated.

07.07: 2018.10.23 – Sound attenuation insulation has been installed in the interior partition walls where indicated.

Division 08: Doors and Windows

08.01: 2018.10.01 – Installation of the windows in the Lobby, Office, and Conference Room has started.

08.02: 2018.10.01 – Door frames have been set in the metal stud partitions.

08.03: 2018.10.23 – Installation of the window near the Mechanical Room has been completed.

08.04: 2018.10.23 – Installation of the exterior storefront system is in progress.

Division 09: Finishes

09.01: 2018.10.01 – Installation of the interior metal framing has started including the bulkheads in the Lobby.

09.02: 2018.10.01 – The exterior walls in the office area have been furred.

09.03: 2018.10.01 – The framing for the bulkhead in the secure vestibule has been installed.

09.04: 2018.10.08 – Installation of the metal stud framing continues throughout the Office and Lobby area.

09.05: 2018.10.23 – Installation of the gypsum board has started on the office walls.

Division 15: Plumbing and HVAC

15.01: 2018.10.01 – The roof drains have been installed.

15.02: 2018.10.01 – The plumbing rough-in continues throughout – including the office area.

15.03: 2018.10.23 – The HVAC ductwork has been installed in the office area. The ductwork has been insulated.

15.04: 2018.10.23 – Insulation of the piping is in progress.

Division 16: Electric

16.01: 2018.10.01 – Installation of electrical rough-in work continues throughout the addition.

16.02: 2018.10.23 – Installation of the electrical rough-in continues throughout. The panel boards have been installed in the mechanical room. The transformer has been set.



CONSTRUCTION PHOTOS



2018.10.01 – Installation of the exterior masonry is nearly complete.



2018.10.01 – Installation of the exterior masonry is nearly complete.



2018.10.01 – Cast stone for installation over the entry canopy.



2018.10.01 – Detail of the cast stone over the Conference Room window.



2018.10.01 – The framing and weather barrier has been installed at the entry canopy.



2018.10.01 – View of the masonry on the north side of the building.



2018.10.01 – View under the entry canopy.



2018.10.01 – View of bulkhead in the Lobby area.



2018.10.01 – View of the Lobby Area near the Mechanical Room.



2018.10.01 – View of metal stud framing within the Office Area.



2018.10.01 – View of metal stud framing within the Office Area.



2018.10.01 – View of metal stud framing within the Office Area.



2018.10.01 – View of metal stud framing within the Office Area.



2018.10.01 – View of metal stud framing within the Office Area.



2018.10.01 – Installation of the stainless steel handrails and guards has started.



2018.10.01 – The framing and weather barrier has been installed at the entry canopy.



2018.10.08 – View of cast stone over the main entry canopy.



2018.10.08 – View of cast stone over the main entry canopy.



2018.10.08 – View of cast stone over the main entry canopy.



2018.10.08 – View of secure vestibule from the exterior.



2018.10.08 – View of soffit framing at main entry canopy.



2018.10.08 – View of ceiling framing near the display case.



2018.10.08 – View of bulkhead framing in the Lobby Area.



2018.10.08 – Installation of the structural glazed tile base in the Lobby Area is in progress.



2018.10.08 – Installation of the office framing continues.



2018.10.08 – Installation of the office framing continues.



2018.10.08 – View looking north from the Secure Vestibule



2018.10.08 – View of the north wall of the addition.



2018.10.08 – View of the new entrance as seen from the ADA accessible ramp.



2018.10.08 – View of the addition as seen from the loop drive.



2018.10.23 – View of window at south elevation as seen from the display case.



2018.10.23 – View of ceiling framing at the display case.



2018.10.23 – View of Lobby Area looking towards the entry area.



2018.10.23 – The electric panels and transformer have been installed.



2018.10.23 – View of ceiling framing near the display case.



2018.10.23 – View of insulated ductwork installed in the office area.



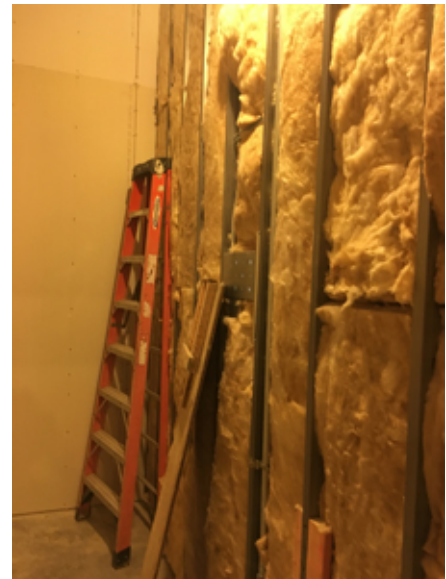
2018.10.23 – View of insulated ductwork installed in the office area.



2018.10.23 – View of insulated ductwork installed in the office area.



2018.10.23 – Insulation of the plumbing piping is in progress.



2018.10.23 – The exterior furred walls have been insulated.



2018.10.23 – Installation of gypsum board has started.



2018.10.23 – Installation of gypsum board has started.



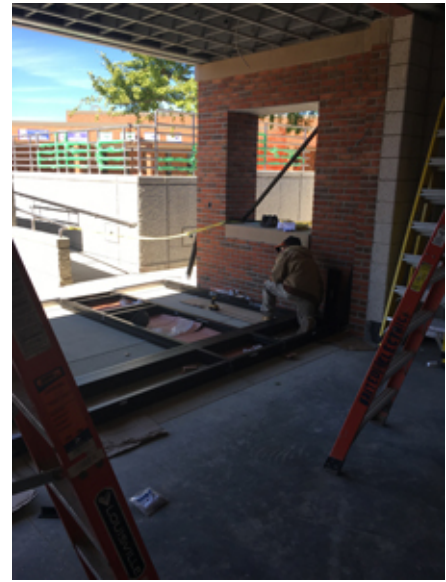
2018.10.23 – Installation of gypsum board has started.



2018.10.23 – Sound attenuation insulation has been installed.



2018.10.23 – View of the ductwork and sound attenuation insulation.



2018.10.23 – Installation of the entry storefront system is in progress.



2018.10.23 – Installation of the stainless steel handrails continues.



2018.10.23 – Installation of the stainless steel handrails continues.

- ☐ Please acknowledge receipt of transmitted items.
- ☐ Return transmitted items to PCA ARCHITECTURE ^{PSC}.

END