




④	ROOF NOTES	
1	EXISTING RIGID INSULATION OVER 1/2" METAL DECK AND BAR JOISTS. REFER TO ROOF TYPE 1. TO COORDINATE ROOF OPENINGS WITH CMTA DRAWINGS.	
2	EXISTING POURED GYP. DECK OVER 1" INSULATION FORM BOARD WITH BULB TEE SUB-PURINS OVER BAR JOISTS. REFER TO ROOF TYPE 2. TO COORDINATE ROOF OPENINGS WITH CMTA DRAWINGS.	
3	EXISTING 3" WOOD FIBER DECK OVER 1 1/2" METAL DECK AND BAR JOISTS. TO COORDINATE ROOF OPENINGS WITH CMTA DRAWINGS.	
ROOF LEGEND		
RD	ROOF DRAIN EXISTING.	
VIR	VENT THROUGH ROOF EXISTING.	
RTU	ROOF TOP UNIT. SEE MECHANICAL, ELECTRICAL, & FOOD SERVICE DRAWINGS.	

#	ROOF NOTES	
1	EXISTING RIGID INSULATION OVER 1/2" METAL DECK AND BAR JOISTS. REFER TO ROOF TYPE 1. TO COORDINATE ROOF OPENINGS WITH CMTA DRAWINGS.	
2	EXISTING POURED GYP. DECK OVER 1" INSULATION FORM BOARD WITH BULB TEE SUB-PURINS OVER BAR JOISTS. REFER TO ROOF TYPE 2. TO COORDINATE ROOF OPENINGS WITH CMTA DRAWINGS.	
3	EXISTING 3" WOOD FIBER DECK OVER 1 1/2" METAL DECK AND BAR JOISTS. TO COORDINATE ROOF OPENINGS WITH CMTA DRAWINGS.	
ROOF LEGEND		
RD	ROOF DRAIN. EXISTING.	☒
VTR	VENT THROUGH ROOF. EXISTING.	○
RTU	ROOF TOP UNIT. SEE MECHANICAL, ELECTRICAL, & FOOD SERVICE DRAWINGS.	□

#	ROOF NOTES	
1	EXISTING RIGID INSULATION OVER 1/2" METAL DECK AND BAR JOISTS. REFER TO ROOF TYPE 1. TO COORDINATE ROOF OPENINGS WITH CMTA DRAWINGS.	
2	EXISTING POURED GYP. DECK OVER 1" INSULATION FORM BOARD WITH BULB TEE SUB-PURINS OVER BAR JOISTS. REFER TO ROOF TYPE 2. TO COORDINATE ROOF OPENINGS WITH CMTA DRAWINGS.	
3	EXISTING 3" WOOD FIBER DECK OVER 1 1/2" METAL DECK AND BAR JOISTS. TO COORDINATE ROOF OPENINGS WITH CMTA DRAWINGS.	
ROOF LEGEND		
RD	ROOF DRAIN. EXISTING.	☒
VTR	VENT THROUGH ROOF. EXISTING.	○
RTU	ROOF TOP UNIT. SEE MECHANICAL, ELECTRICAL, & FOOD SERVICE DRAWINGS.	□

#	ROOF NOTES	
1	EXISTING RIGID INSULATION OVER 1/2" METAL DECK AND BAR JOISTS. REFER TO ROOF TYPE 1. TO COORDINATE ROOF OPENINGS WITH CMTA DRAWINGS.	
2	EXISTING POURED GYP. DECK OVER 1" INSULATION FORM BOARD WITH BULB TEE SUB-PURINS OVER BAR JOISTS. REFER TO ROOF TYPE 2. TO COORDINATE ROOF OPENINGS WITH CMTA DRAWINGS.	
3	EXISTING 3" WOOD FIBER DECK OVER 1 1/2" METAL DECK AND BAR JOISTS. TO COORDINATE ROOF OPENINGS WITH CMTA DRAWINGS.	
ROOF LEGEND		
RD	ROOF DRAIN. EXISTING.	☒
VTR	VENT THROUGH ROOF. EXISTING.	○
RTU	ROOF TOP UNIT. SEE MECHANICAL, ELECTRICAL, & FOOD SERVICE DRAWINGS.	□

#	ROOF NOTES	
1	EXISTING RIGID INSULATION OVER 1/2" METAL DECK AND BAR JOISTS. REFER TO ROOF TYPE 1. TO COORDINATE ROOF OPENINGS WITH CMTA DRAWINGS.	
2	EXISTING POURED GYP. DECK OVER 1" INSULATION FORM BOARD WITH BULB TEE SUB-PURINS OVER BAR JOISTS. REFER TO ROOF TYPE 2. TO COORDINATE ROOF OPENINGS WITH CMTA DRAWINGS.	
3	EXISTING 3" WOOD FIBER DECK OVER 1 1/2" METAL DECK AND BAR JOISTS. TO COORDINATE ROOF OPENINGS WITH CMTA DRAWINGS.	
ROOF LEGEND		
RD	ROOF DRAIN. EXISTING.	☒
VTR	VENT THROUGH ROOF. EXISTING.	○
RTU	ROOF TOP UNIT. SEE MECHANICAL, ELECTRICAL, & FOOD SERVICE DRAWINGS.	□

KEY PLAN

The key plan diagram illustrates the layout of four distinct areas. AREA A is a rectangular section on the left, filled with diagonal hatching. AREA B is a rectangular section to the right of AREA A, filled with diagonal lines. AREA C is a rectangular section below AREA B, filled with horizontal lines. AREA D is a rectangular section above AREA C, filled with solid grey. A north arrow is located in the bottom right corner, pointing upwards. The scale is indicated as 'SCALE: NTS' (Not To Scale).

SCALE: NTS

rosarrant
architects

101 old layette avenue leangton, kentucky 40502 p 859.254.4018 f 859.231.5046

ROOF PLAN
FOR:
KING MIDDLE SCHOOL RENOVATIONS
MERCER COUNTY BOARD OF EDUCATION
530 PERRYVILLE STREET, HARRODSBURG, KY 40330

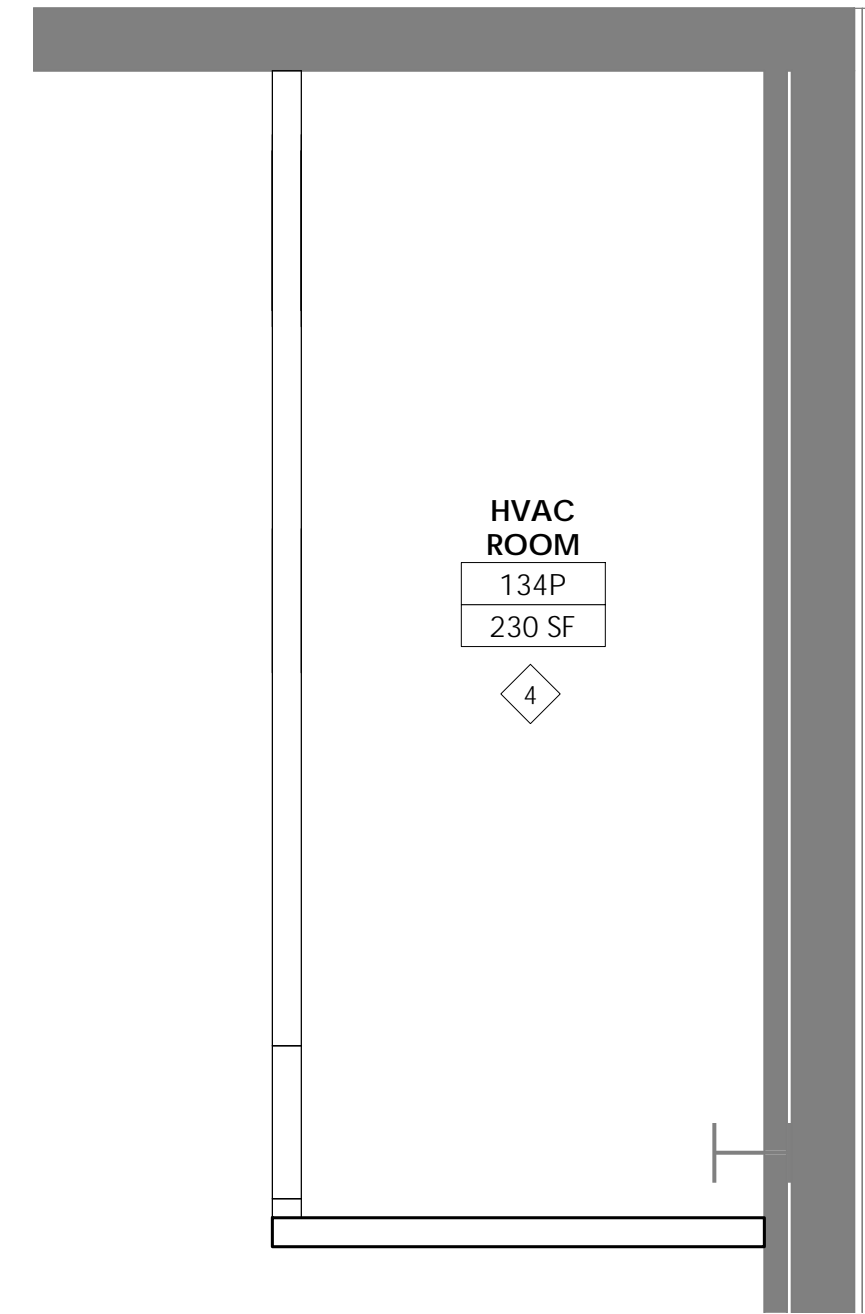
Project No: 1843
Drawn By: C.V.
Rev'd By: MJD

SHEET RELEASE
1
2
3
4
5
6
7
8

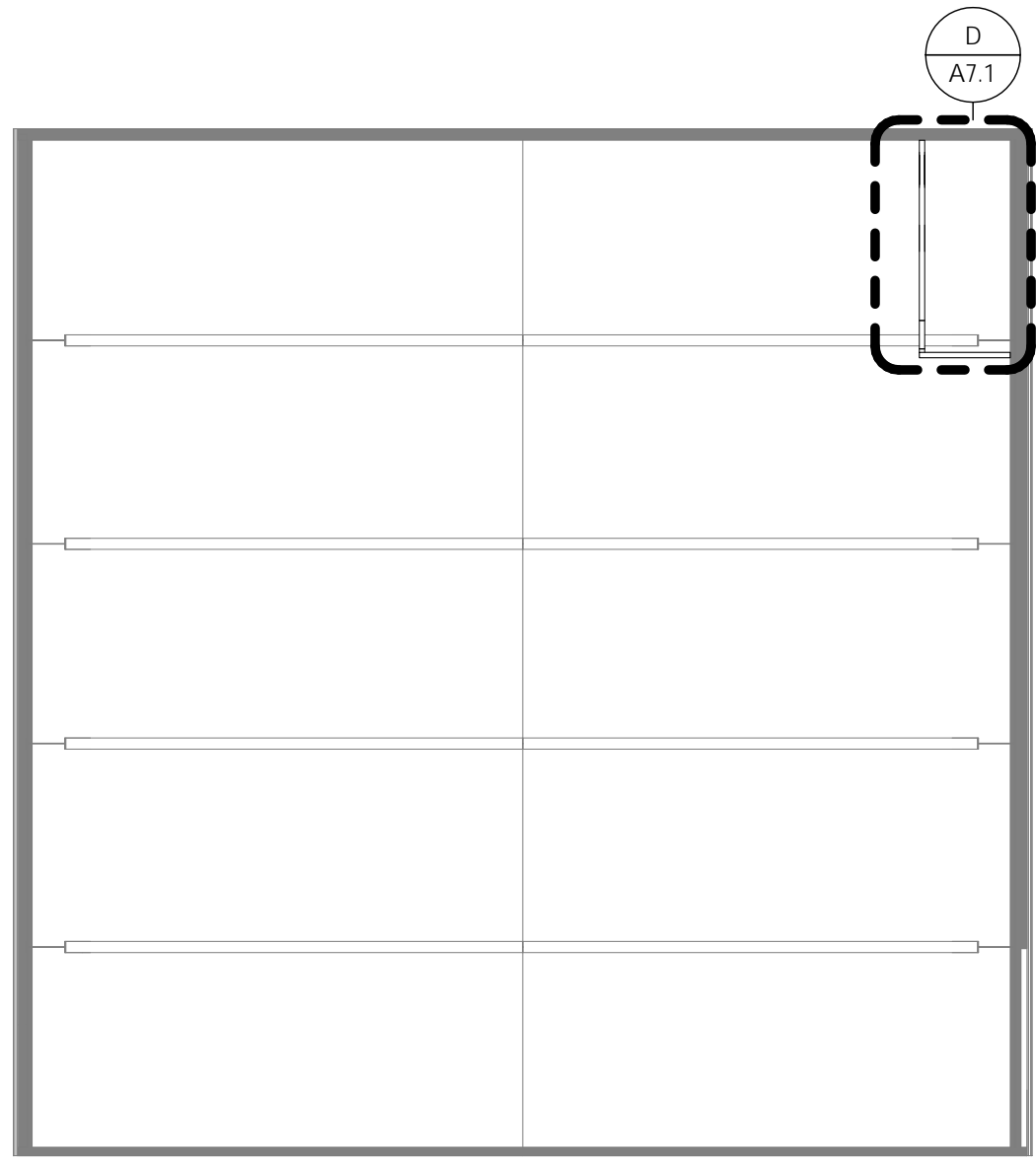
COPYRIGHT © 2018
Project Status

A3.1
ROOF PLAN
DATE ISSUED:
Issue Date

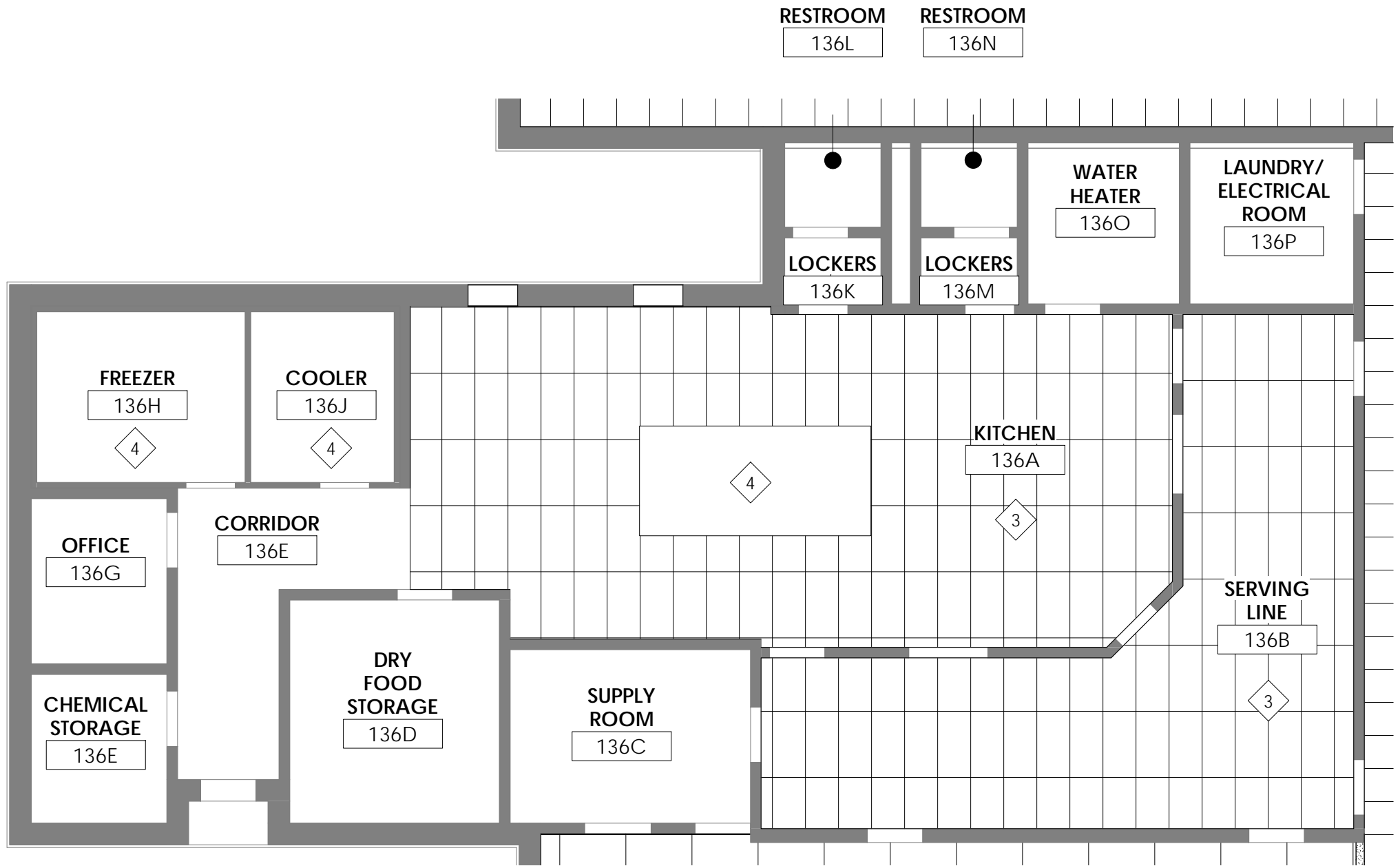
SCALE: NTS



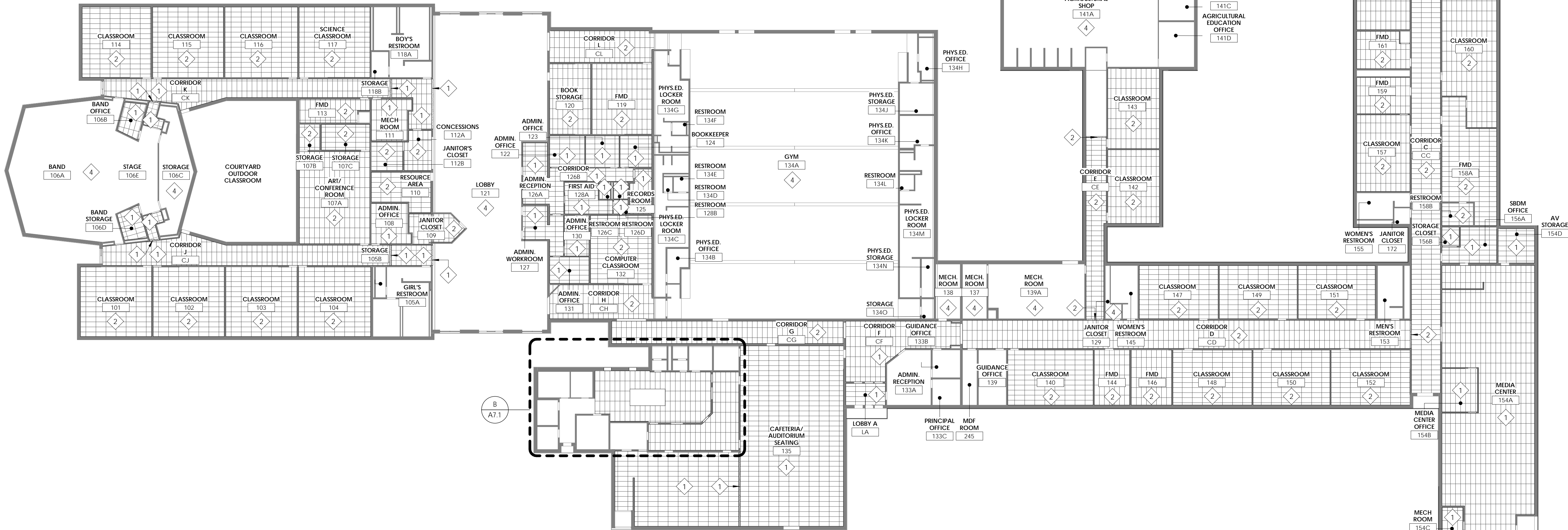
HVAC ROOM MEZZANINE RCP
1/4" = 1'-0"



MEZZANINE RCP
3/64" = 1'-0"



KITCHEN RCP
1/8" = 1'-0"



FIRST FLOOR RCP
3/64" = 1'-0"

GENERAL RCP NOTES

1. LIGHT FIXTURES AND HVAC ITEMS SHOWN FOR REFERENCE ONLY. CONTRACTOR SHALL COORDINATE ALL DIFFUSERS, SPRINKLER HEADS AND LIGHTING FIXTURES WITH MECHANICAL, ELECTRICAL, AND PLUMBING DRAWINGS AND SPECIFICATIONS. SOFFITS AND BULKHEADS WILL RECEIVE ACCENT PAINT COLOR(S) TBD. HORIZONTAL AND VERTICAL SURFACES OF SOFFITS AND BULKHEADS WILL BE PAINTED AN ACCENT COLOR.
2. ALL GYPSUM BOARD CEILINGS, SOFFITS, METAL DECKING, STRUCTURAL ELEMENTS, CONDUIT, AND ETC. REMAINING EXPOSED AFTER CONSTRUCTION IS COMPLETE WILL RECEIVE A FINISH SYSTEM U.N.C.O. REFER TO THE SPECIFICATIONS AND DRAWINGS FOR ADDITIONAL INFORMATION.
3. DIMENSIONS OF SOFFITS ARE TO THE FACE OF FINISHED GYPSUM BOARD.
4. ELEVATIONS INDICATED ARE TO THE BOTTOM OF FINISH MATERIAL FROM ABOVE FINISH FLOOR. GYPSUM BOARD IS TO BE EXTENDED FOUR INCHES MINIMUM ABOVE FINISHED CEILINGS AT SOFFITS AND BULKHEADS THAT ARE NOT REQUIRED TO MAINTAIN A FIRE RATING OR ACOUSTIC SEPARATION.
5. RECESS FACE OF GYPSUM BOARD INTERIOR SOFFITS AND BULKHEADS ONE INCH FROM FACE OF BULLNOSE CAMU.

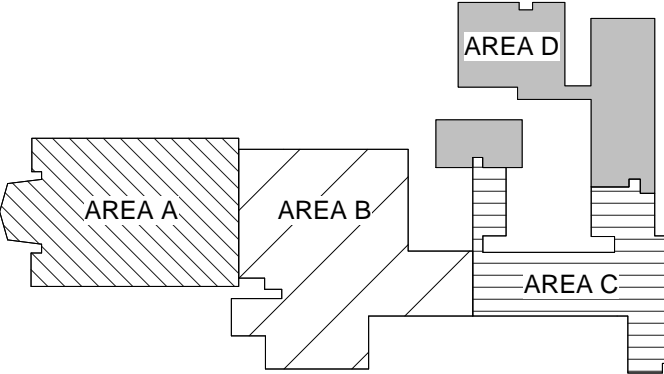
RCP NOTES

1. NEW CEILING TILE SYSTEMS TO BE INSTALLED AT EXISTING HEIGHT. HEIGHTS TO BE FIELD VERIFIED. ACT 1.
2. NEW CEILING GRID AND TILE SYSTEMS TO BE INSTALLED AT EXISTING HEIGHT. HEIGHTS TO BE FIELD VERIFIED. ACT 1.
3. NEW CEILING GYP TILE SYSTEMS WITH A VINYL FACE TO BE INSTALLED AT EXISTING HEIGHT. HEIGHTS TO BE FIELD VERIFIED. ACT 2.
4. OPEN TO ABOVE: EXPOSED STRUCTURE.
5. EXISTING CEILING TO REMAIN.

RCP LEGEND

ROOM NAME	ROOM TAG W/ CEILING HEIGHT
ROOM NUMBER: #	
CLG. HGT.: #	
	ACOUSTICAL CEILING TILE & GRID. REFER TO A2 SHEETS FOR SIZES & TYPES

KEY PLAN



SCALE: NTS