



Bullitt County Public Schools

1040 Highway 44 East
Shepherdsville, Kentucky 40165

502-869-8000
Fax 502-543-3608
www.bullittschools.org

MEMO

TO: Jesse Bacon 

FROM: Mark Mitchell 

DATE: August 14, 2018

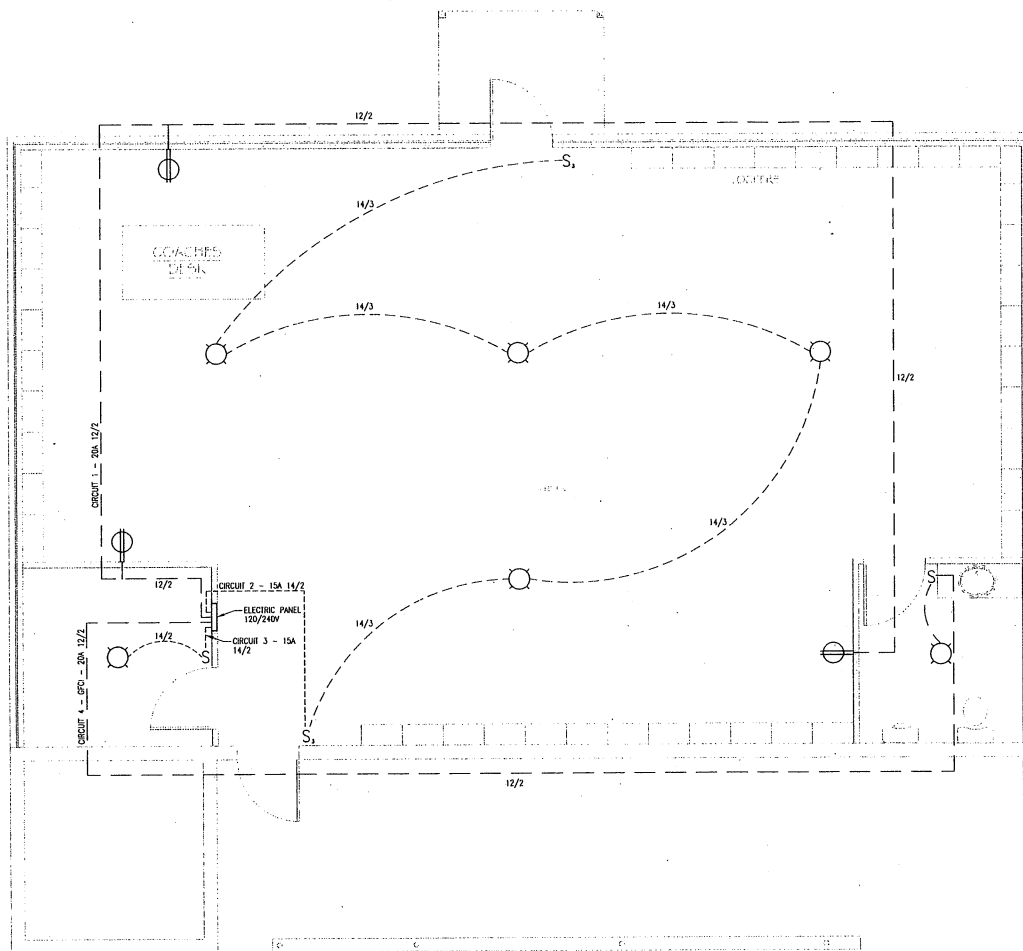
RE: Board Agenda Item – Approval of Architectural Drawings – Bullitt East High School Dugout Expansion – Rangaswamy and Assoc., Inc.

Presented for Board approval are the architectural drawings relating to the Bullitt East High School Dugout Expansion project as prepared by Rangaswamy and Assoc., Inc. These are the structural, architectural and electrical drawings required by KDE. Upon approval, the drawings will be sent to KDE for their approval and records.

I recommend the Board's approval of the architectural drawings prepared by Rangaswamy and Assoc., Inc.

Attachment: Architectural Drawings








ELECTRICAL PLAN
SCALE: 3/8"=1'-0"

1
E1

LEGEND:

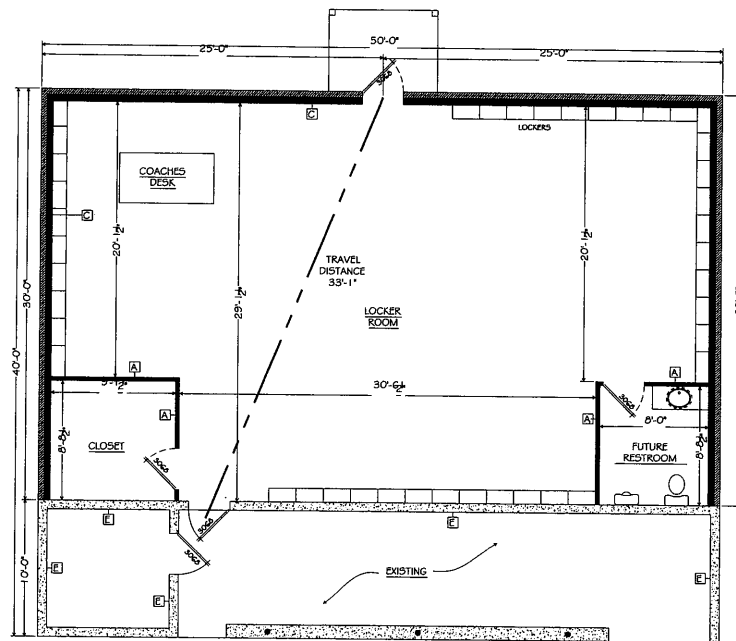
-  = OVERHEAD LIGHT
-  = DUPLEX RECEPTACLE, 120V, 20A
-  = ELECTRIC PANEL, 120/240V
- S = SWITCH
- S₁ = 3 WAY SWITCH



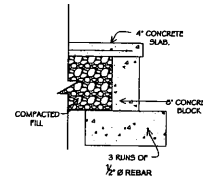
RANGASWAMY AND ASSOC., INC.
The Old Postcard Building
539 West Market Street, Suite 200
Louisville, KY 40202
Phone: (502) 582-2212
Fax: (502) 582-2213
Web: www.rangaswamy.com

**Bullitt East High School
Storage/Locker Room Addition**
Mount Washington, Kentucky

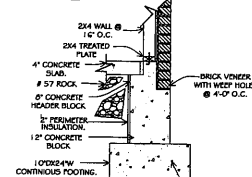
DRAWN BY:	AE
CHECKED BY:	AE
DATE:	8/16/18
TITLE:	ELECTRICAL PLAN
SHEET:	E1



2 FLOOR PLAN
SCALE: 1/4" = 1'-0"



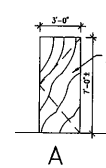
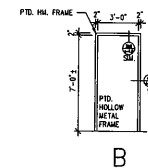
1 PORCH DETAIL
2" = 1'-0"



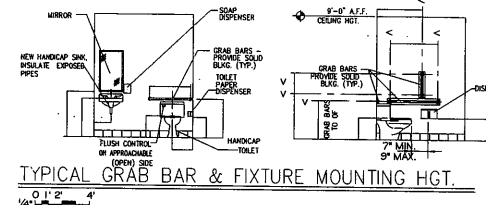
2 BLOCK W/BRICK LEDGE
2" = 1'-0"

DOOR SCHEDULE									
MARK	DOOR	DIMENSIONS	MATL	TYPE	DETAIL			FRAME	
					HEAD	JAMB	SILL	MATL	TYPE
100	1'-0" x 7'-0"	1'-0" x 7'-0"	ALUM.	3	-	-	-	ALUM.	B
101	1'-0" x 7'-0"	1'-0" x 7'-0"	SW	1	3/4"-10"	3/4"-10"	-	SW	A
102	1'-0" x 7'-0"	1'-0" x 7'-0"	SW	1	3/4"-10"	3/4"-10"	-	SW	A

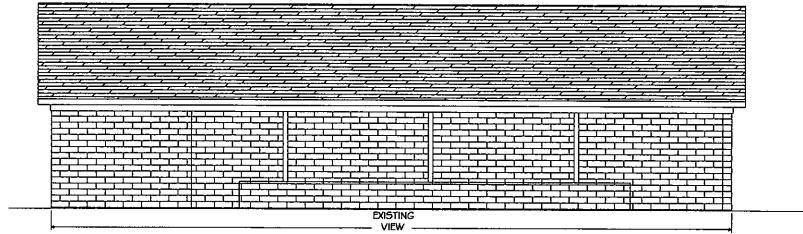
DOOR SCHEDULE REMARKS:
 1. ALL EXIST. DOORS SHALL BE OPENABLE FROM THE INSIDE WITHOUT USE OF A KEY OR ANY SPECIAL KNOWLEDGE OR EFFORT.
 2. ALL DOOR-OPENING DEVICES SHALL HAVE A SHAPE THAT IS EASY TO GRASP WITH ONE HAND AND DOES NOT REQUIRE
 3. SW. DOORS TO BE STAINED ALL 6 SIDES, COLOR T.B.A. BY OWNER.
 4. SW. DOORS SHALL HAVE WHITE FRAMES & LETTERS ON A DARK (STD. COLOR) BACKGROUND, ACRYLIC SIGN
 5. CONSTRUCTION W/ APPLIED TACTILE LETTERING & GRADE 7 BRASS TAG, RATED FOR INTERIOR OR EXTERIOR USE.
 6. CONSULT W/ ARCHITECT PRIOR TO INSTALLATION IF THERE ARE ANY QUESTIONS.
 7. PASS THRU DOOR BY CONTRACTOR.



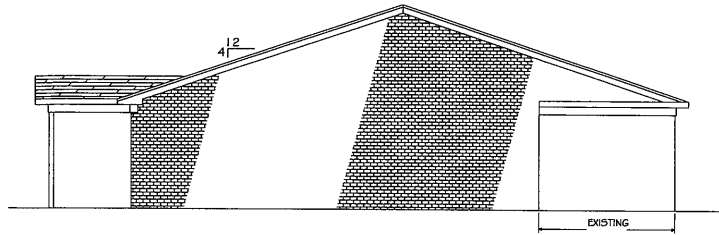
HARDWARE SETS:				STYLE AND FINISH BY OWNER
SET NO. 1	SET NO. 2	SET NO. 3	SET NO. 4	
1 1/2 PR. HINGES	1 1/2 PR. HINGES	1 1/2 PR. HINGES	1 1/2 PR. HINGES	
1 PASSAGE SET	1 PASSAGE SET	1 PASSAGE SET	1 PASSAGE SET	
1 LEVER HANDLE	1 LEVER HANDLE	1 LEVER HANDLE	1 LEVER HANDLE	
1 WALL STOP	1 WALL STOP	1 WALL STOP	1 WALL STOP	



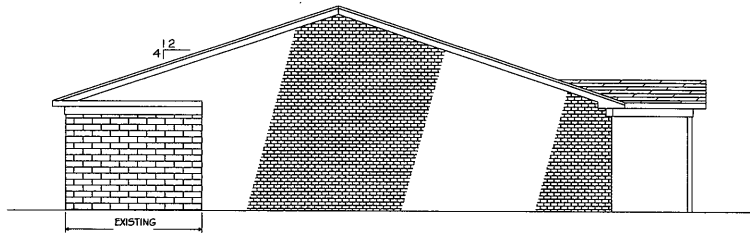
TYPICAL GRAB BAR & FIXTURE MOUNTING HGT.
0 1' 2" 4"



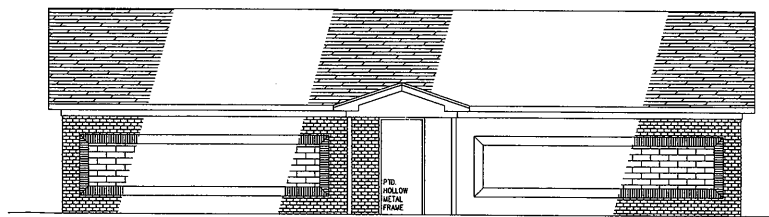
1 FRONT ELEVATION
A2 SCALE: 1/4" = 1'-0"



2 LEFT ELEVATION
A2 SCALE: 1/4" = 1'-0"



3 RIGHT ELEVATION
A2 SCALE: 1/4" = 1'-0"



4 REAR ELEVATION
A2 SCALE: 1/4" = 1'-0"

RAMESWART AND ASSOC., INC.
The Old Portside Building
1000 Main Street, Suite 200
Louisville, Kentucky 40202
Phone: (502) 588-2512
Web: www.ramswart.com

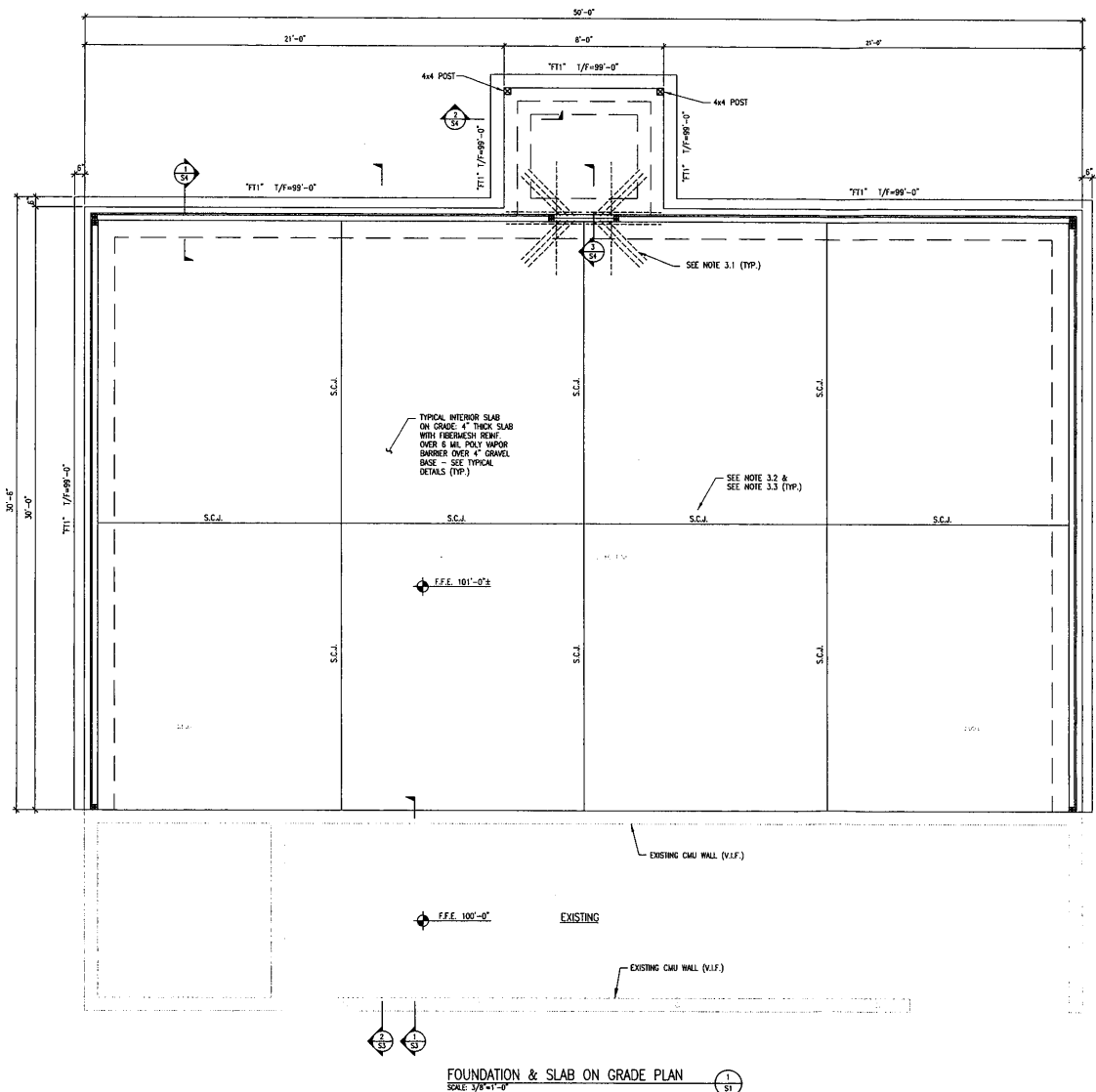


Bullitt East High School
Storage/Locker Room Addition
Mount Washington, Kentucky

DRAWN BY:
AE
CHECKED BY:
AE
DATE:
8/10/18
TITLE:

ELEVATIONS

SHEET:
A2



GENERAL NOTES:

- 1.1 CONTRACTOR SHALL FIELD VERIFY ALL EXISTING DIMENSIONS, ELEVATIONS, COMPONENT SIZES & CONDITIONS, ETC. PRIOR TO DEMOLITION AND CONSTRUCTION. REPORT ANY DISCREPANCIES OR CONDITIONS FOUND THAT WOULD PROHIBIT DEMOLITION/CONSTRUCTION AS SHOWN ON THE CONTRACT DOCUMENTS TO THE ARCHITECT FOR POSITIVE ACTION.
- 1.2 THE EXISTING STRUCTURAL ELEMENTS SHOWN ON THIS DRAWING HAVE BEEN TRANSCRIBED FROM COPIES OF THE ORIGINAL DESIGN DRAWINGS. CONTRACTOR SHALL FIELD VERIFY EXISTING CONDITIONS AND PRODUCE WORK THAT IS ACCEPTABLE TO THE PROJECT DESIGN TEAM.
- 1.3 CONSTRUCTION AGENTS AND AGENTS ARE THE RESPONSIBILITY OF THE GENERAL CONTRACTOR. THE GENERAL CONTRACTOR IS RESPONSIBLE FOR REHABILITATING THE DEMOLISHED ELEMENTS TO AN "AS ORIGINAL" CONDITION, ACCEPTABLE TO ARCHITECT, UPON COMPLETION OF THE WORK.

FOUNDATION NOTES:

- 2.1 IN THE EVENT THAT FOUNDATION BEARING SOLES ARE ENCOUNTERED THAT DO NOT MEET OR EXCEED THE INTENDED SOIL BEARING CAPACITY, CONSULT THE ARCHITECT IMMEDIATELY FOR ACCEPTABLE REMEDIATION OPTIONS. DO NOT FILL UNDERCUT AREAS WITH GRAVEL FILL, NO MORE THAN 1 1/2" OF GRAVEL MAY BE PLACED BETWEEN MATERIAL SOLES AND BOTTOM OF FOUNDATIONS.
- 2.2 PROVIDE STEEL OR PVC SLEEVES WHEN PASSING FOUNDATION DRAINS OR UTILITY TUBES THROUGH CONCRETE FOOTINGS AND WALLS. SEAL SUCH SLEEVES WITH URETHANE SEALANT AS SPECIFIED FOR THESE SUBSTRATES.
- 2.3 SEE DETAIL 7/25 FOR UTILITY PASSING UNDER STRIP FOOTINGS. DO NOT USE BRUTE UTILITY UNDER SPREAD COLUMN FOOTINGS.

SLAB ON GRADE NOTES:

- 3.1 PROVIDE ADJ. REINFC. SLAB RE-ENTRANT CORNERS PER TYPICAL DETAIL 5/25.
- 3.2 SLAB CONSTRUCTION/CONTROL JOINT LOCATIONS, INDICATED ON THE PLANS AS CJ OR SJ, ARE CONCEPTUAL ONLY. THE CONTRACTOR IS RESPONSIBLE FOR THE FINAL LAYOUT & PLACEMENT OF THE REQUIRED SLAB JOINTS AS NOTED IN THE GENERAL PROVISIONS AND TYPICAL DETAILS. SUBMIT JOINT LAYOUT SCHEMATIC TO ARCHITECT FOR REVIEW PRIOR TO SLAB POURS.
- 3.3 SLAB REBARS SHALL NOT CROSS UNDER SHOWN CONTROL JOINTS. CONTRACTOR SHALL EITHER PRE-PLAN REBAR POSITIONS PRIOR TO SLAB POUR; OR ASSURE THAT SAW CUT DEPTH WILL ALSO CUT THROUGH SLAB REBARS.
- 3.4 ALL FLOOR DRAINS MAY NOT BE SHOWN. COORDINATE EXACT LOCATIONS AND QUANTITIES WITH THE PLUMBING DRAWINGS. PROVIDE POSITIVE SLOPES/DRAINS TO THE FLOOR SLAB IN ORDER TO PROVIDE REQUIRED DRAINAGE. COORDINATE FLOOR FINISHES WITH THE ARCHITECT.

STRIP FOOTING TYPE:

"T1" - 2'-0" WIDE x 12" THICK w/13 #4 LONGH. & #10S C/C TRANSV. AT BOTTOM. SEE PLAN FOR TOP OF FOOTING ELEVATION.

LEGENDS:

2x4 WOOD STUD WALL WITH APA RATED SHEATHING 19/32 THK. w/106 COMBON WALLS @ EDGE WALLING @ 6" O.C. AND FIELD WALLING @ 12" O.C.

RANGASWAMY AND ASSOC., INC.

The Old Portland Building
1000 10th Avenue, Suite 200
Louisville, Kentucky 40202
Phone: (502) 588-5217
Web: www.rangaswamy.com



Bullitt East High School
Storage/Locker Room Addition
Mount Washington, Kentucky

DRAWN BY:

AE

CHECKED BY:

AE

DATE:

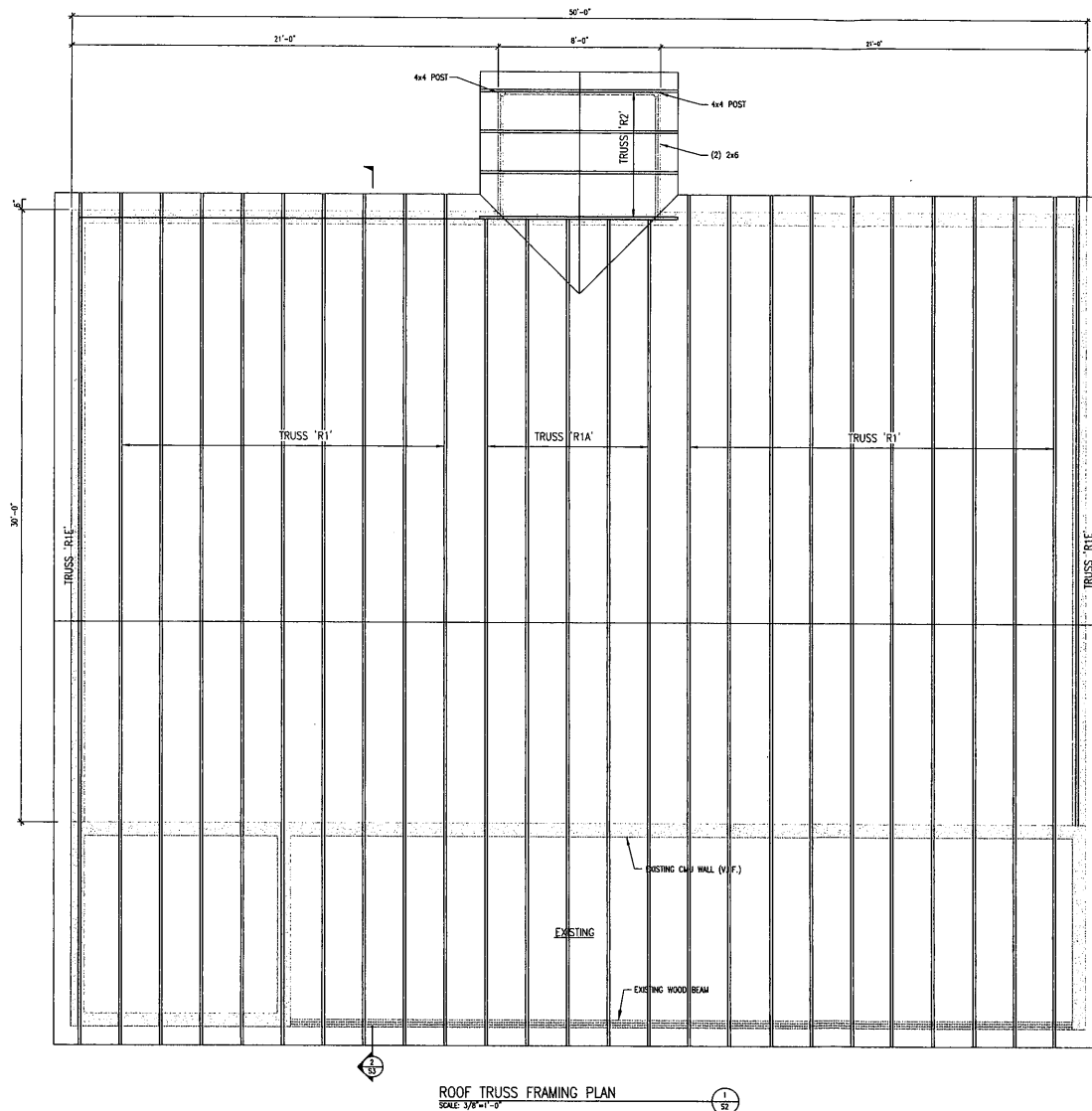
8/10/18

TITLE:

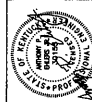
FOUNDATION
& SLAB ON
GRADE PLAN

SHEET:

S1

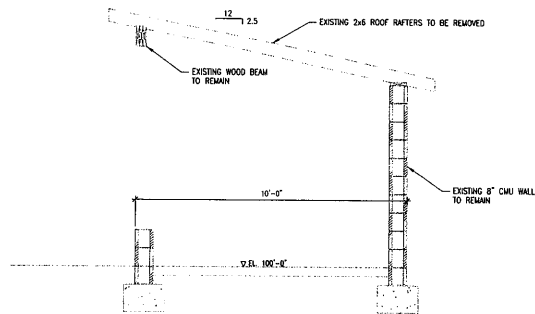


RANGASWAMY AND ASSOC., INC.
 The Old Postcard Building
 200 West Main Street, Suite 200
 Louisville, Kentucky 40202
 Phone : (502) 589-2212
 Web : www.rangaswamy.com

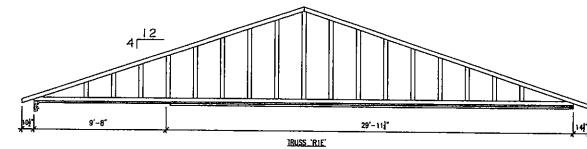
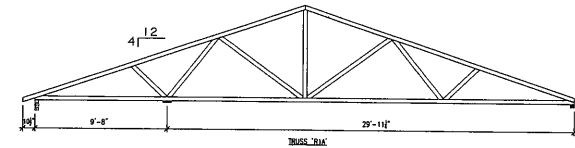
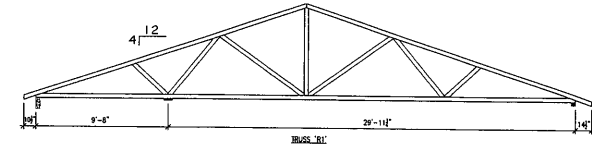
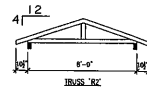


Bullitt East High School
Storage/Locker Room Addition
 Mount Washington, Kentucky

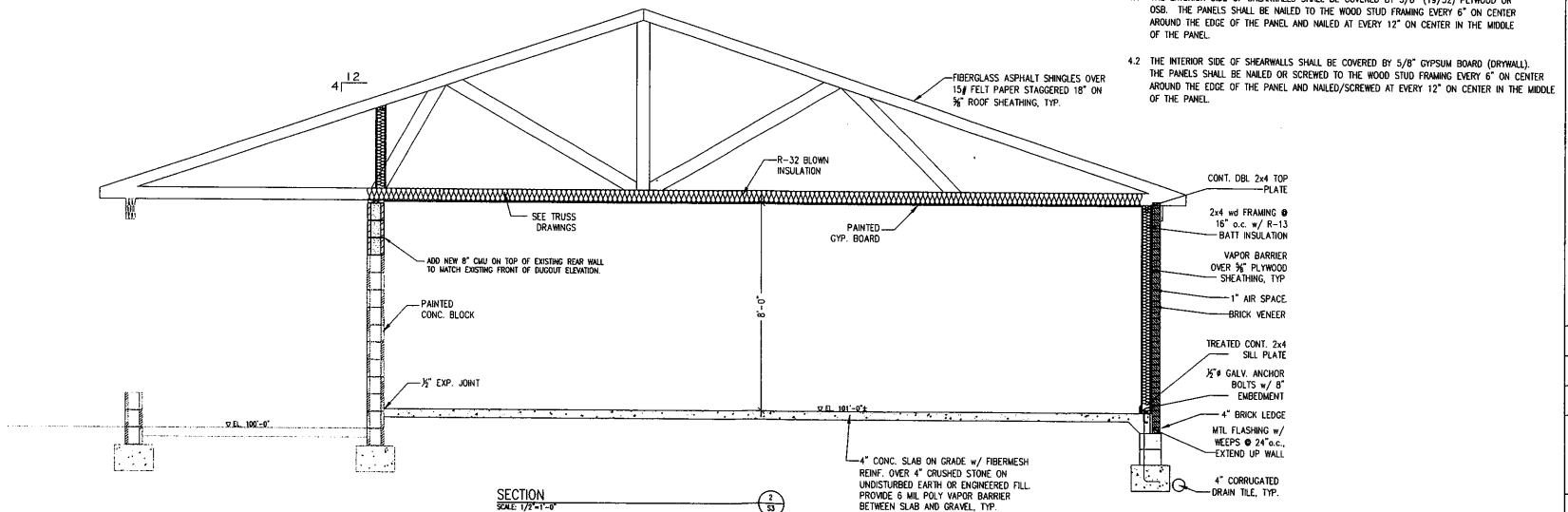
DRAWN BY:
AE
 CHECKED BY:
AE
 DATE:
8/10/18
 TITLE:
ROOF TRUSS FRAMING PLAN
 SHEET:
S2



EXISTING DUGOUT SECTION
SCALE: 1/2"=1'-0"



TRUSS ELEVATIONS
SCALE: 1/4"=1'-0"



SHEARWALL NOTES

- 4.1 THE EXTERIOR SIDE OF SHEARWALLS SHALL BE COVERED BY 5/8" (19/32) PLYWOOD OR OSB. THE PANELS SHALL BE NAILED TO THE WOOD STUD FRAMING EVERY 6" ON CENTER AROUND THE EDGE OF THE PANEL AND NAILED AT EVERY 12" ON CENTER IN THE MIDDLE OF THE PANEL.
- 4.2 THE INTERIOR SIDE OF SHEARWALLS SHALL BE COVERED BY 5/8" GYPSUM BOARD (DRYWALL). THE PANELS SHALL BE NAILED OR SCREWED TO THE WOOD STUD FRAMING EVERY 6" ON CENTER AROUND THE EDGE OF THE PANEL AND NAILED/SCREWED AT EVERY 12" ON CENTER IN THE MIDDLE OF THE PANEL.

RANGASWAMY AND ASSOC., INC.
The Old Postcard Building
630 West Market Street, Suite 500
Indianapolis, IN 46204
Phone: (317) 588-2212
Web: www.rangaswamy.com

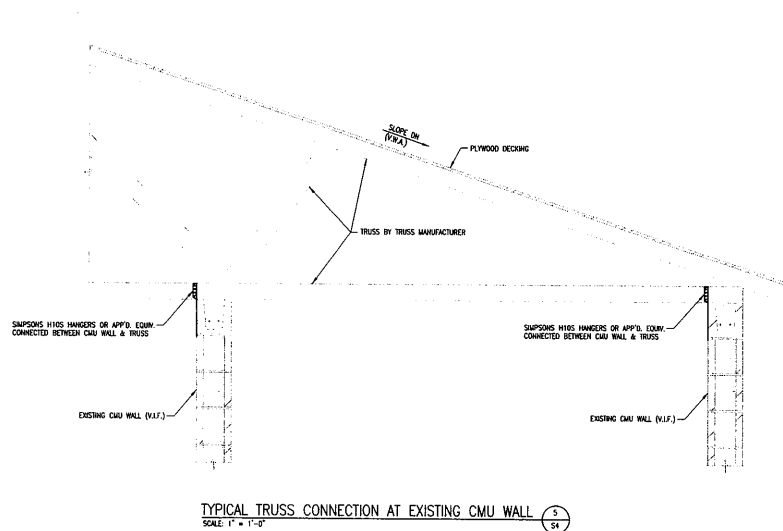
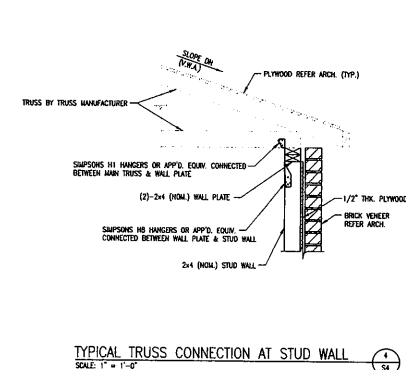
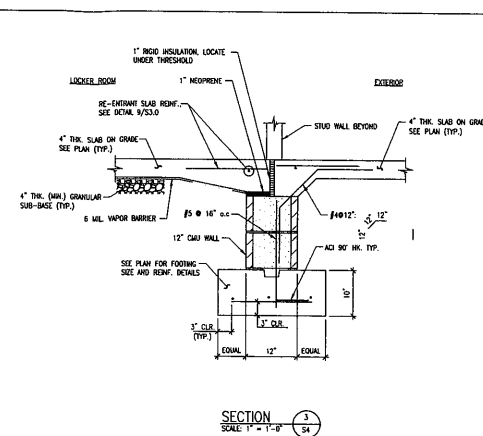
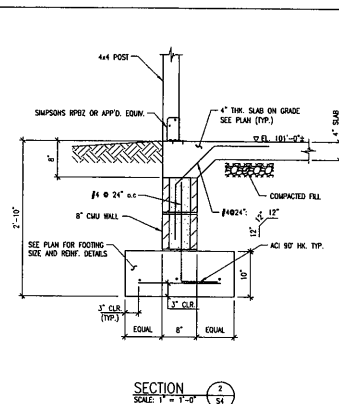
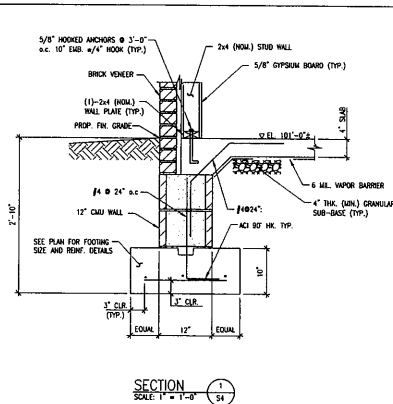


**Bullitt East High School
Storage/Locker Room Addition**
Mount Washington, Kentucky

DRAWN BY:
AE
CHECKED BY:
AE
DATE:
8/10/18

TITLE:
SECTION

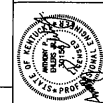
SHEET:
S3



CONNECTION (COMMON NAILS ONLY)	NAILING
JOIST TO SILL OR GROUND, TOENAIL	(3) 8d
BRIDGING TO JOIST, TOENAIL, EACH END	(2) 8d
SOLE PLATE TO JOIST OR BRIDGING, TYPICAL FACE NAIL	16d @ 16\" C/C
SOLE PLATE TO JOIST OR BRIDGING, AT BRICED WALL PANEL	(3) 16d PER 16"
TOP PLATE TO STUD, END NAIL	(2) 16d
TOP PLATE TO STUD, END NAIL	(2) 16d
STUD TO SOLE PLATE	(4) 8d TOENAIL OR (2) 16d END NAIL
DOUBLED STUDS, FACE NAIL	16d @ 24\" C/C
DOUBLED TOP PLATES, TYPICAL, FACE NAIL	16d @ 16\" C/C
DOUBLED TOP PLATES, LAP, SPURCE	(8) 16d
BLOCKING BETWEEN JOISTS OR RAFTERS TO TOP PLATE, TOENAIL	(3) 8d
R/W JOIST TO TOP PLATE, TOENAIL	8d @ 6\" C/C
TOP PLATE, LAPS AND INTERSECTIONS, FACE NAIL	(2) 16d
CONTINUOUS HEADER, TWO PIECES	16d @ 16\" C/C ALONG EACH EDGE
CEILING JOISTS TO PLATE, TOENAIL	(3) 8d
CONTINUOUS HEADER TO STUDS, TOENAIL	(4) 8d
CEILING JOISTS, LAPS OVER PARTITIONS, FACE NAIL	(3) 16d
CEILING JOIST TO PARALLEL RAFTERS, FACE NAIL	(3) 16d
RAFTER TO PLATE, TOENAIL	(3) 8d
BUILT-UP CORNER STUDS	16d @ 24\" C/C
BUILT-UP GIRDER AND BEAMS	20d @ 32\" C/C TOP AND BOTTOM AND STAGGERED (2) 20d EACH END NAIL SPURCES

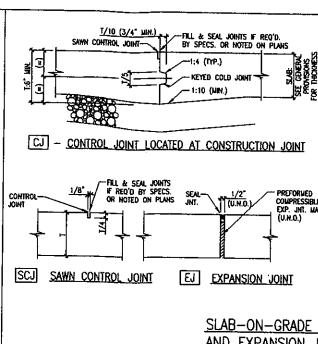
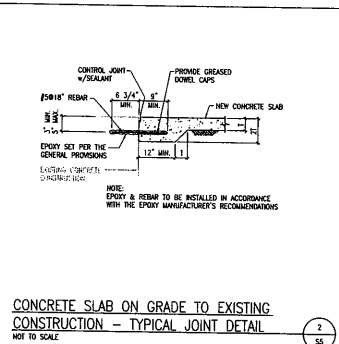
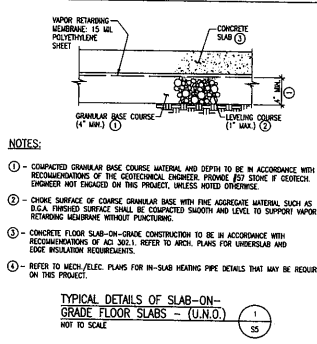
TYPICAL NAILING SCHEDULE (U.N.O.)
NOT TO SCALE

RANGSWORTHY AND ASSOC., INC.
The Old Postcard Building
539 West Main Street, Suite 200
Burlington, Kentucky 40302
Phone: (502) 589-2121
Web: www.rangsworthy.com



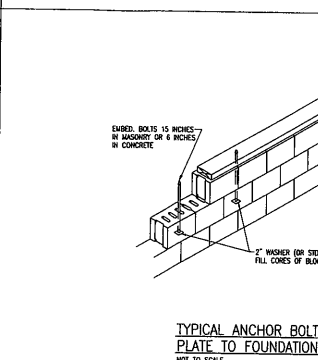
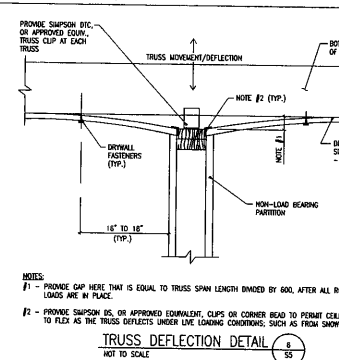
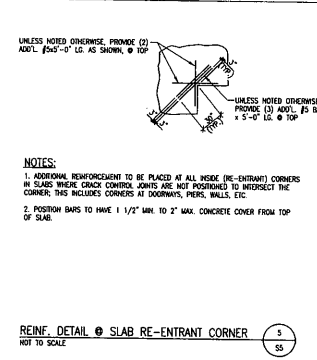
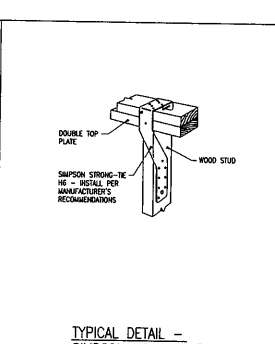
Bullitt East High School
Storage/Locker Room Addition
Mount Washington, Kentucky

DRAWN BY:
AE
CHECKED BY:
AE
DATE:
8/10/18
TITLE:
SECTIONS & DETAILS
SHEET:
S4



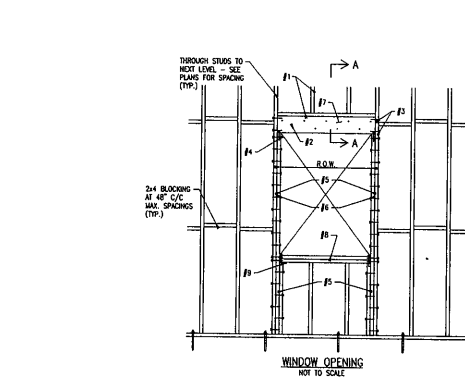
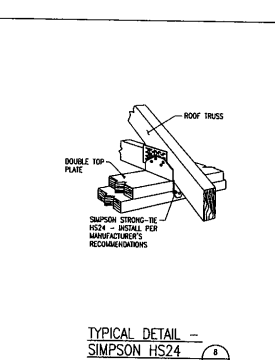
NOTES (U.N.O.):

- CRACK CONTROL JOINTS IN SLABS ON GRADE SHALL BE LOCATED FOR THE ARCHITECT & SHOWN ON THE DRAWINGS.
- ALL JOINTS SHALL BE LAID OUT IN APPROX. SQUARE PATTERN.
- CONTROL JOINTS IN INTERIORS AND DRIVWAYS ARE TO BE SPACED AT INTERVALS EQUAL TO THE WIDTH OF THE SLAB OR MINIMUM 10' MAX. C/C.
- EXPANSION JOINTS IN EXTERIOR SLABS ON GRADE SHALL BE LOCATED AT 10' MAX. C/C.
- WHenever possible, control joints and construction joints shall be concurrent.
- CONTROL JOINTS MAY BE EITHER SAWN WITHIN 4-12 HOURS OF FINAL SET OR FORMED WITH PROPERLY REINFORCED OR BUILT-UP STRIPS. SUBJECT TO APPROVAL OF ARCHITECT. DO NOT DELAY SAWING.
- SAWN JOINTS SHALL BE 1/4" WIDE AND EXTEND TO 25% THE DEPTH OF THE SLAB (1" MIN.).
- CONTROL JOINTS IN EXTERIOR SLABS WITH REINFORCEMENT SHALL HAVE SEALANT.
- CONTROL JOINTS IN WASH-DOWN AREAS SHALL HAVE SEALANT.
- USE THESE TYP. SAW CONTROL JOINTS IN BLDG. AND EXTERIOR SLABS ON GRADE.
- FOUR SEPARATE SLAB JOINTS IN ALTERNATING STRIP SEQUENCES.
- SHOW JOINT LAYOUTS TO ARCHITECT FOR APPROVAL.
- COORDINATE POUR AREAS AND JOINT LAYOUTS WITH OTHER TRADES.



NOTES (U.N.O.):

- CRACK CONTROL JOINTS IN SLABS ON GRADE SHALL BE LOCATED FOR THE ARCHITECT & SHOWN ON THE DRAWINGS.
- ALL JOINTS SHALL BE LAID OUT IN APPROX. SQUARE PATTERN.
- CONTROL JOINTS IN INTERIORS AND DRIVWAYS ARE TO BE SPACED AT INTERVALS EQUAL TO THE WIDTH OF THE SLAB OR MINIMUM 10' MAX. C/C.
- EXPANSION JOINTS IN EXTERIOR SLABS ON GRADE SHALL BE LOCATED AT 10' MAX. C/C.
- WHenever possible, control joints and construction joints shall be concurrent.
- CONTROL JOINTS MAY BE EITHER SAWN WITHIN 4-12 HOURS OF FINAL SET OR FORMED WITH PROPERLY REINFORCED OR BUILT-UP STRIPS. SUBJECT TO APPROVAL OF ARCHITECT. DO NOT DELAY SAWING.
- SAWN JOINTS SHALL BE 1/4" WIDE AND EXTEND TO 25% THE DEPTH OF THE SLAB (1" MIN.).
- CONTROL JOINTS IN EXTERIOR SLABS WITH REINFORCEMENT SHALL HAVE SEALANT.
- CONTROL JOINTS IN WASH-DOWN AREAS SHALL HAVE SEALANT.
- USE THESE TYP. SAW CONTROL JOINTS IN BLDG. AND EXTERIOR SLABS ON GRADE.
- FOUR SEPARATE SLAB JOINTS IN ALTERNATING STRIP SEQUENCES.
- SHOW JOINT LAYOUTS TO ARCHITECT FOR APPROVAL.
- COORDINATE POUR AREAS AND JOINT LAYOUTS WITH OTHER TRADES.



KEY NOTES:

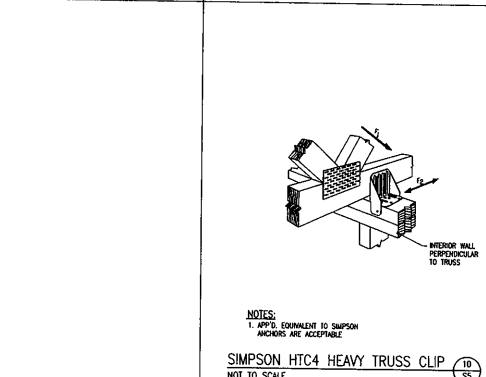
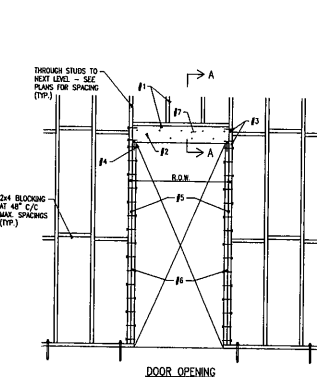
- 2x4 WOOD STUD WALL ON 2x6 PLATE. SEE PLANS FOR STUD SPACING.
- 16x WALS @ 12" C/C STAGGERED BOTH SIDES.
- (2) 16x WALS EACH END.
- 16x TOSING EACH SIDE, EACH END, TYPICAL FOR EACH JACK STUD.
- JACK STUD - SEE SCHEDULE FOR QUANTITY OF STUDS BASED UPON ROUGH OPENING WIDTH (R.O.W.).
- 16x WALS @ 12" C/C STAGGERED.
- WOOD LINTEL, W/PLYWOOD FILLED FULL HEIGHT - SEE SCHEDULE FOR 2-PLY SIZE BASED UPON R.O.W.
- DOUBLE 2x4 SILL PLATE - NAIL TO STUDS WITH (4) 30x NALS EACH END.
- (2) 30x NALS INTO JACK STUD(S) EACH END.

GENERAL NOTES:

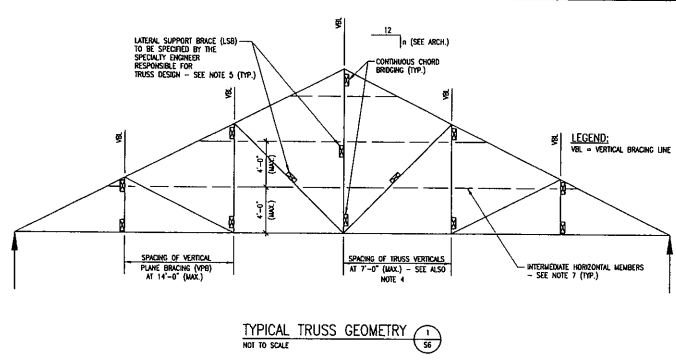
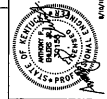
- THIS SCHEDULE MAY BE USED ONLY IN WALLS WHERE NO LINTEL HAS BEEN CALLED OUT ON PLANS OR SPECIFIC DETAILS/SECTIONS.
- SINGLE 6-8Y LINTELS MAY BE USED IN LIEU OF TRIPLE 2-8Y AT CONTRACTOR'S OPTION.

SCHEDULE

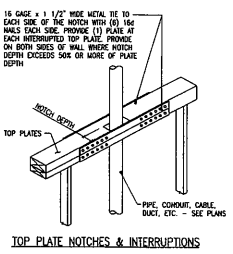
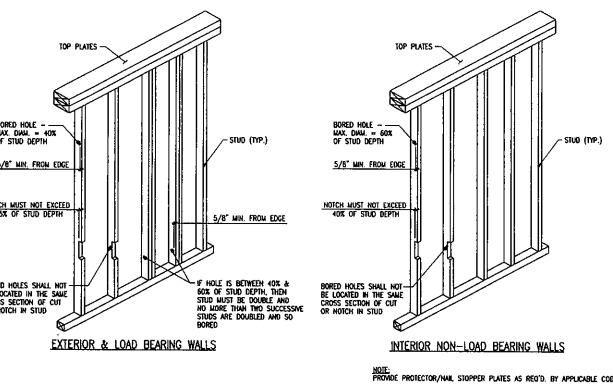
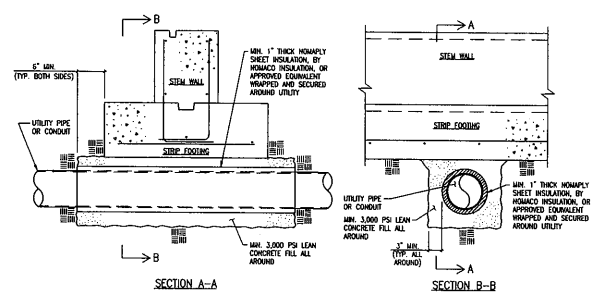
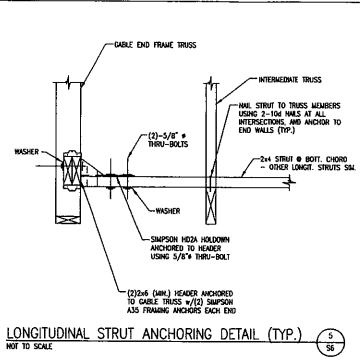
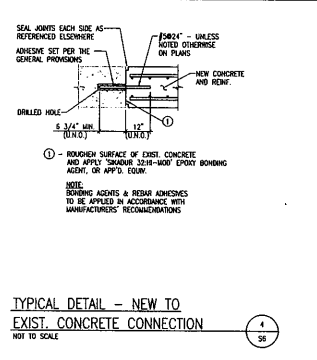
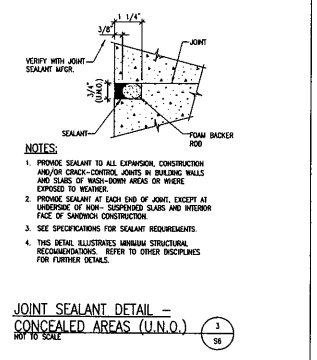
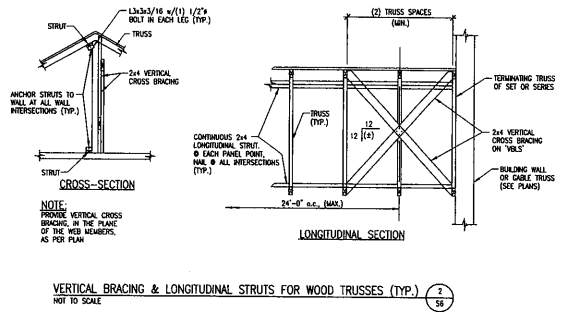
ROUGH OPENING WIDTH (R.O.W.)	LINTEL MEMBERS	JACK STUD QUANTITY EACH SIDE
0'-0" TO 3'-4"	(2) 2x6s	1
3'-5" TO 4'-4"	(2) 2x10s	2



2x4 WOOD STUD WALL LINTEL SCHEDULE (U.N.O.)
NOT TO SCALE



- NOTES TO THE TRUSS DESIGNER:**
1. USE ONLY HOME TYPE TRUSSES WITH VERTICAL WEB MEMBERS.
 2. SPACING OF VERTICALS SHALL NOT EXCEED 8'-0".
 3. THE CHORD MEMBERS SHALL BE CHECKED FOR COMBINED BENDING AND AXIAL LOADS.
 4. PROVIDE A VERTICAL WEB MEMBER AT ALL INTERMEDIATE SUPPORT POINTS AND PROVIDE DETAILS OF SUPPORT REQUIRED.
 5. HIGH-LIGHT ALL WEB MEMBERS REQUIRING LATERAL SUPPORT AND PROVIDE DETAILS OF SUPPORT REQUIRED.
 6. AT SLOPE PARTITIONS, PROVIDE INTERMEDIATE HORIZONTAL MEMBERS AT SPACES NOT TO EXCEED 4'-0". INSTALL IN OUTER MOST PLIES OF CHORD TRUSSES.
 7. TRUSS DIAGRAM IS FOR ILLUSTRATION OF PROFILE ONLY. TRUSSES TO BE DESIGNED IN ACCORDANCE WITH THE GENERAL PROVISIONS, AND WITHIN THE LIMITATIONS FOR HANDLING & TRANSPORTATION.
 8. TRUSS CONFIGURATION SHOWN IS SCHEMATIC.



NOTCHING AND HOLE LIMITATIONS FOR WALLS
 NOT TO SCALE