



Bullitt County Public Schools

1040 Highway 44 East
Shepherdsville, Kentucky 40165

502-869-8000
Fax 502-543-3608
www.bullittschools.org

MEMO:

TO: Mr. Jesse Bacon

FROM: Bret Highley

DATE: July 10, 2018

RE: Bullitt Lick Middle School Addition/Renovation BG 17-14
Construction Update

Please find the monthly construction update for Bullitt Lick Middle School as submitted by Cate Ward, Studio Kremer Architects.

If you have any questions, please call me at 502-921-3659.

Attachments:

- July Construction Update



CONSTRUCTION UPDATE

From June 27, 2018 Progress Meeting

Bullitt Lick Middle School – Renovation and Gym Addition

555 W Blue Lick Road

Shepherdsville, KY 40165

SKA #: 2016-86

BG #: 17-148

CONSTRUCTION SUMMARY

The exterior shell of the new gymnasium and entrance additions (Area C) is nearly complete. The masonry veneer at the covered walkways and new entrance into the family resource room will be finishing up over the next few weeks. Interior work at the new gym is nearly complete – the wood floor finishing will be done once all trades are out of that area. Interior painting in all of Area C is ongoing. Floor finishes in Area C will be installed at the very end of this phase to make sure construction traffic in and out of the building does not damage the new flooring.

Interior work at Area B is going at a fast pace to make the common areas ready by the first day of school. You'll see, included in this memo, the cafeteria and kitchen space are fully demolished and work is progressing quickly. The other areas included in Area B are the art room, band room, media center and flexible classrooms. All those areas are on track to be completed by the first day of school. EH Construction has been working with BCPS to coordinate moving of furniture back into the administration area and classrooms the first week in August.

Interior work at Area A includes full ceiling demolition and routing of above ceiling equipment. The replacement windows are all installed throughout the entire school. Floor mitigation to address the moisture issues in the concrete slabs on grade is following to schedule of construction as each space is finished and ready for new floor finishes to be installed.

Site work is progressing this summer as weather permits – the goal by the end of the summer is to have the new front entrance driveway complete by the first day of school. The site contractor will wait to resurface the existing asphalt parking lots during the scheduled fall break. Due to the large amount of rain this summer, the work on finishing final site grading at the geothermal field has been on hold until dryer conditions are present.

The roof abatement work has begun and will continue through the remainder of the summer. The large amount of rain this summer has delayed abatement but EH Construction has a plan in place to abate the roof while students are not in school during 2nd shift if the work needs to push into the fall semester.

Please see the next two pages for EH Construction's progress report that includes progress made during the past two weeks as well as a look forward to the next two weeks.

Bullitt Lick Middle School Addition/Renovation PROGRESS MEETING AGENDA

ITEMS TO BE DISCUSSED

• Work Completed Last Week

- EH (GC) – Complete kitchen slab removal, demo shoring at commons line, grout column bases at commons line, continue with installation of exterior and interior door frames, demo old office area, demo shoring in old gym, install beam pocket for new arts corridor opening and install lintel, install lintels for new duct openings throughout, wood blocking as required for new framing, general cleaning and supervision of trades onsite.
- Flynn Brothers (Sitework) – Continue with installation of storm drainage piping for Area C and cut new front entry to subgrade. RAIN IS HAVING A DRAMATIC IMPACT ON COMPLETION OF SITEWORK FOR NEW PARKING LOT AND DROP OFF AT FRONT ENTRY. IF RAIN PERSISTS WE ARE NOT GOING TO BE ABLE TO WAIT FOR THIS TO DRY OUT TO COMPLETE WORK WHICH MAY POSSIBLY LEAD TO UNDERCUT TO COMPLETE THIS WORK BEFORE THE BEGINNING OF SCHOOL.
- AST (Abatement) – Continue with roofing abatement on 2nd shift. CONTRACTOR HAS ONLY BEEN ABLE TO WORK SATURDAY AND SUNDAY THIS WEEK DUE TO RAIN. CURRENTLY WE HAVE LOST A TOTAL OF 10 DAYS DUE TO RAIN ON THE REROOF.
- HCL (Selective Demo) – Continue with removal of debris from A wing, demo lockers in A wing scheduled to be replaced by Masonry, continue with misc. openings in A wing, complete demo of new computer lab window openings, VCT REMOVAL IN A WING WAS HALTED AGAIN YESTERDAY DUE TO SUSPICIOUS MASTIC AND TILE. EHM TOOK ADDITIONAL SAMPLES YESTERDAY AND WE ARE AWAITING RESULTS TODAY ON HOW TO PROCEED.
- Uessler (Concrete) – Pour back trench in Arts Corrdior, old media center, restroom for new media center.
- TL Young (Masonry) – Misc. infills and new wall construction throughout Area B & Area A, begin work on new restroom in media center.
- Structural Steel – Complete commons beam line, install new columns for new media center opening, install operable partition wall beam today.
- Purefoam (Roofing & Insulation) – Continue work on re-roof behind abatement contractor. CONTRACTOR HAS ONLY BEEN ABLE TO WORK SATURDAY AND SUNDAY THIS WEEK DUE TO RAIN. CURRENTLY WE HAVE LOST A TOTAL OF 10 DAYS DUE TO RAIN ON THE REROOF.

- American Roofing & Sheet Metal (Sheet Metal & TPA) – Continue with sheet metal soffit for gym high roof. Sheetmetal has been delayed due to rain over the past 2 weeks.
- Stanley Schultze (Aluminum Storefronts) – Complete installation of replacement windows throughout, install glass in HM front entry door.
- Atlas (Doors & Specialties) –
- Bennett's Carpets (Interior Finishes) – Drywall finishing in Admin is 90% complete, continue framing in new media center, shot blasting and mitigation are complete in 507 & 508, begin framing for new resource rooms, ceiling grid will start tomorrow morning in Admin Area.
- Martin Flooring (Gym Floor) –
- Toadvine (Gym Equipment) –
- Bogg's Painting – Continue painting in Area C and provide sample section of glazed block primer.
- Landmark Sprinkler – Continue with above ceiling sprinkler rough in work in Area B, complete demo of existing sprinkler system in Area A, & demo existing sprinkler riser.
- Smith's Laminating –
- Lusk Mechanical – Complete underslab plumbing in Area B with exception of the kitchen, continue cast iron underground in the kitchen, continue with above ceiling storm piping tie ins, complete HDPE hydronic loop this week, begin installation of heat pumps in G104, continue with ductwork and insulation throughout Area B, scheduled to begin work on above ceiling ductwork in media center today.
- Payne Electric – Complete electrical demo as required, continue with unistrut and rough in for pendant lighting in areas of exposed structure, complete site lighting rough in work in bus parking lot, continue with tying in cable trays throughout, begin work on in wall rough in behind framers in new Media Center.

- **Work Anticipated Next Week**

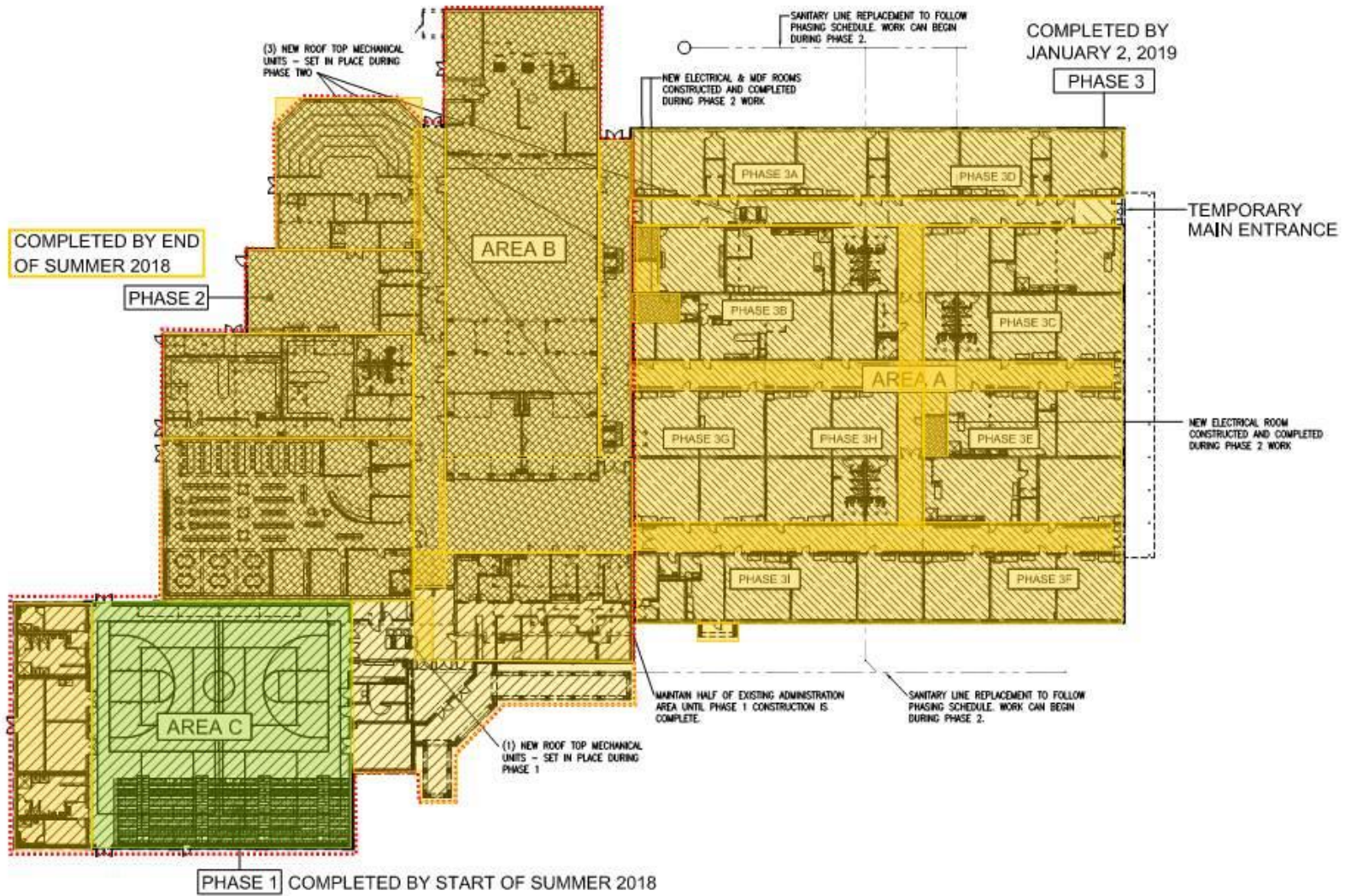
- EH (GC) – Continue with underslab concrete demo in Area A, continue with installation of HM doors and frames throughout the building, complete installation of remaining lintels for duct openings, wood blocking as required in new framing, roof edge blocking for new cornice at old switchgear room and new media center roof edge.
- Flynn Brothers (Sitework) – NEED TO DISCUSS HOW TO PROCEED WITH SITEWORK AT FRONT ENTRY DUE TO WEATHER, begin work on replacement of existing sanitary lines front and back of the building and new site storm lines for Area B & Area A.
- AST (Abatement) – Continue with roofing demolition and floor tile abatement.

- HCL (Selective Demo) – Complete exterior wall openings, complete clean up in Area A, demo existing exterior wall control joint to control joint for new media center opening, begin work on block and roof edge demo for cornice.
- Uessler (Concrete) – Pour serving line trench, old resource room, new mechanical room in existing gym & pour light pole bases in bus parking lot.
- TL Young (Masonry) – Complete work on restroom in old gym, complete CMU for new wall opening in old gym, begin work on cornice, continue with misc. patching and door frames throughout.
- Structural Steel – Complete installation of partition beam, complete misc. details on gym columns, complete erection of columns and beams for remaining walkway.
- Purefoam (Roofing & Insulation) – Continue with existing roof replacement.
- American Roofing & Sheet Metal (Sheet Metal & TPA) – Continue with sheetmetal work for Area C.
- Stanley Schultze (Aluminum Storefronts) – Install kitchen window and new openings in computer lab.
- Atlas (Doors & Specialties) – Deliver balance of HM doors to the site.
- Bennett's Carpets (Interior Finishes) – Complete media center and resource framing, continue with ceiling grid in admin and cafeteria, continue with shot blasting and floor prep in cafeteria.
- Martin Flooring (Gym Floor) –
- Toadvine (Gym Equipment) –
- Bogg's Painting – Continue painting throughout Area B & C.
- Landmark Sprinkler – Complete remainder of above ceiling sprinkler piping in Area B, begin work on sprinkler piping in Area A.
- Geothermal Earthworks – Onsite to complete rough grading of geo field once weather dries up.
- Lusk Mechanical – Complete underslab plumbing in kitchen, continue with underslab in Area A for FMD and mechanical rooms, continue work on tying in new roof drains with reroof, continue installation of new heat pumps for Area B, continue with ductwork in old gym behind framers, continue with mechanical insulation throughout.
- Payne Electric – Drop fixtures in admin and complete devices, begin hanging pendant lights in exposed structure areas, continue with in wall rough in work in Media Center & resource rooms, complete cable try tie ins, SWC continue with rough in work for new intercom system.

TO DATE WE HAVE LOST 10 DAYS DUE TO RAIN ON RE-ROOF AND NOW THIS IS AFFECTING SITEWORK AS WELL. AT THIS POINT, IT APPEARS THAT THE REROOF IS GOING TO BE ONGOING AS SCHOOL IS BACK IN SESSION. NEED TO DISCUSS HOW TO APPROACH GAS PIPING.

PHASING DIAGRAM & AREAS OF CONSTRUCTION

Areas noted in green are nearing completion or are complete.



CONSTRUCTION PROGRESS PHOTOS



View of New Main Entrance. (6-27-2018)



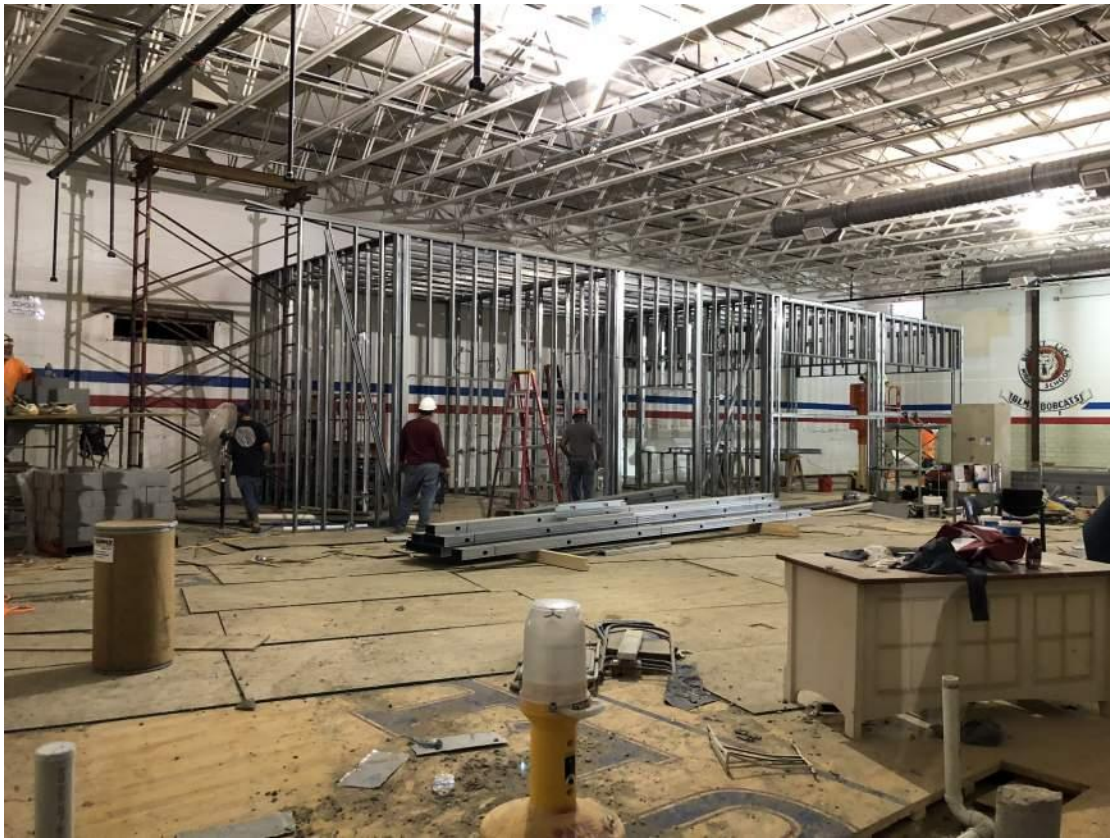
View of New Main Entrance. (6-27-2018)



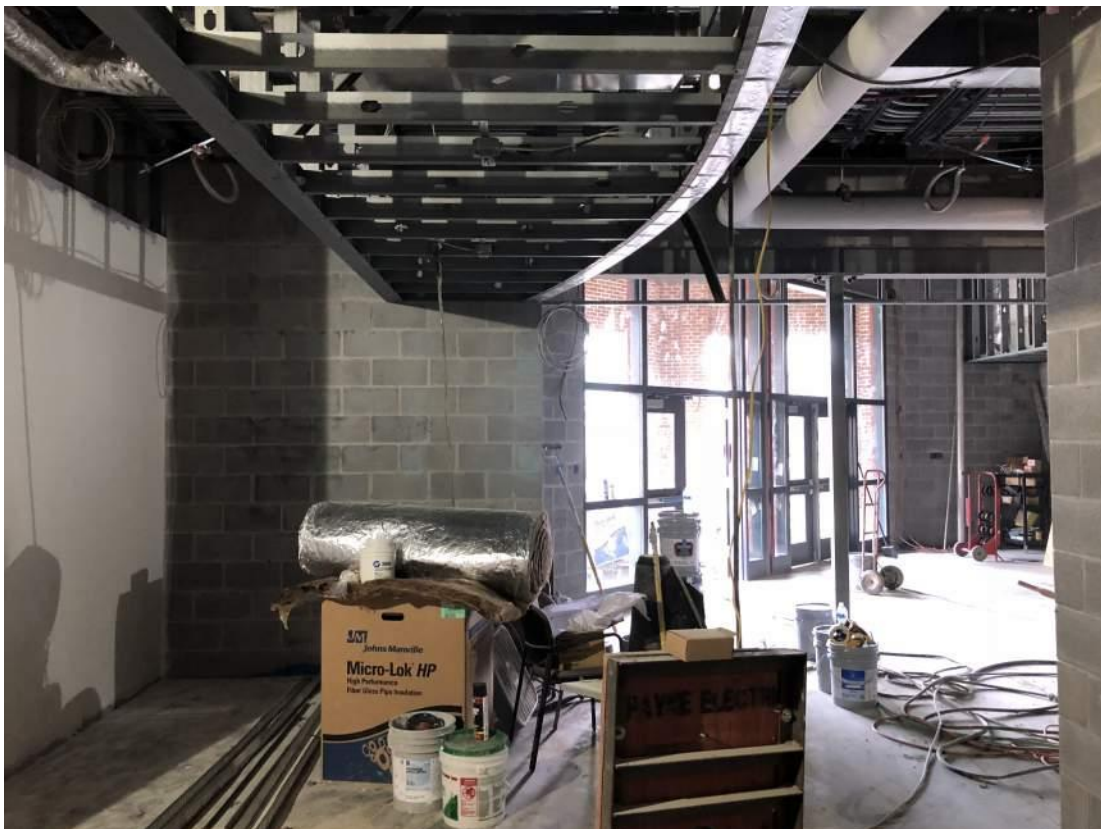
View of New Main Entrance with Gym Addition in Background. (6-27-2018)



View of Covered Walkways in progress. (6-27-2018)



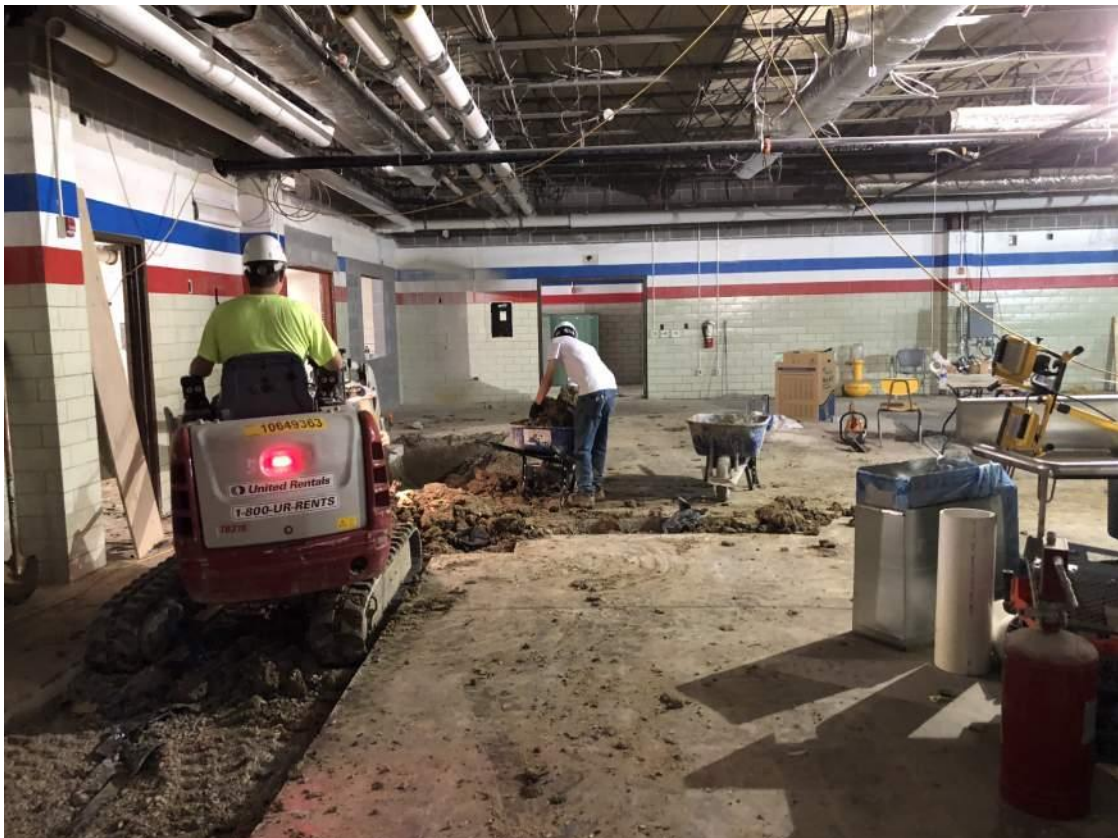
Interior wall framing at New Media Center, former Gym. (6-27-2018)



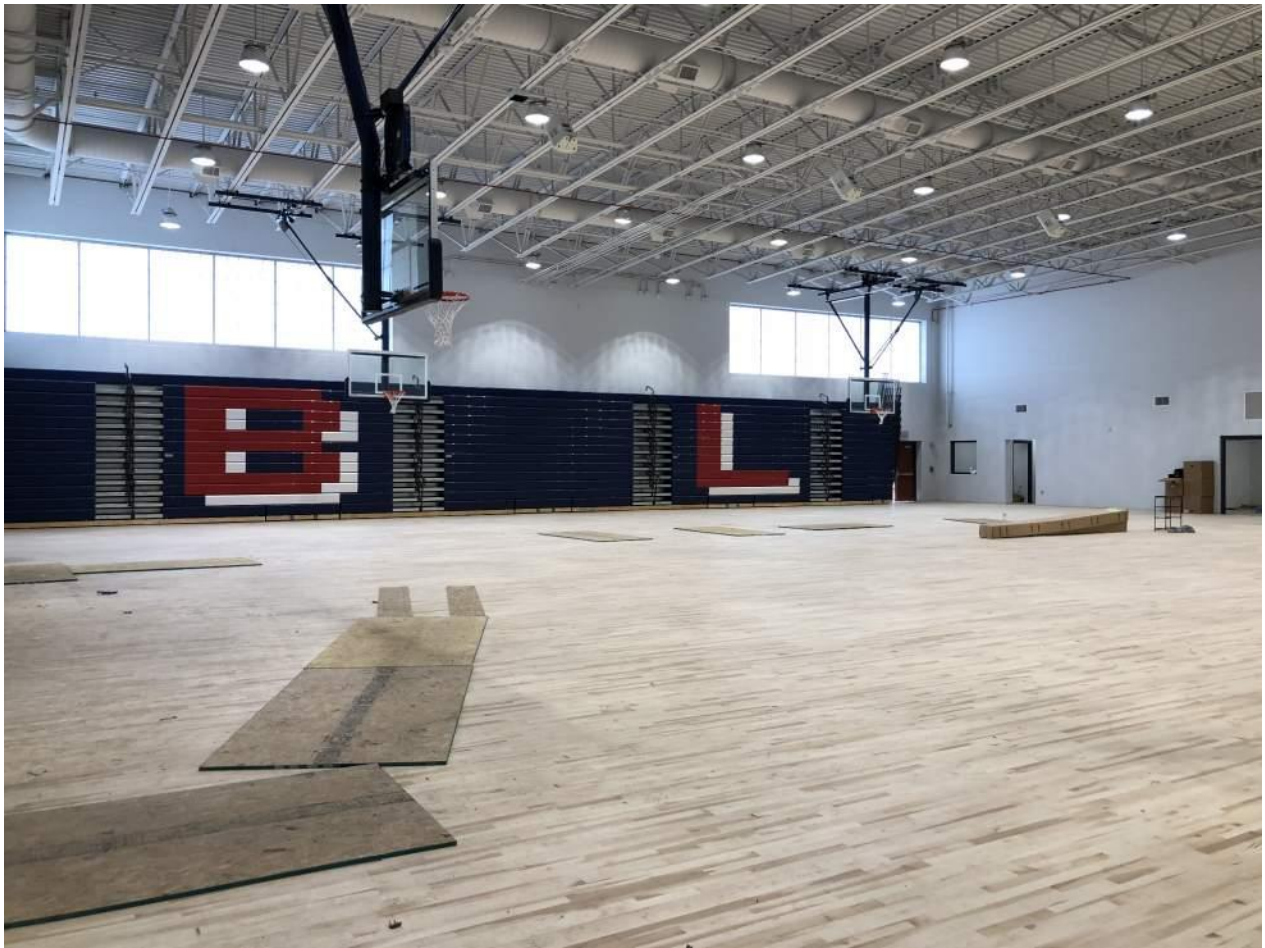
View of main office reception area. (6-27-2018)



Looking into the renovated Cafeteria Space from Flexible Classrooms. (6-27-2018)



Floor trenching in progress at new Cafeteria Serving Line. (6-27-2018)



View of new bleachers at Gym Addition. (6-27-2018)