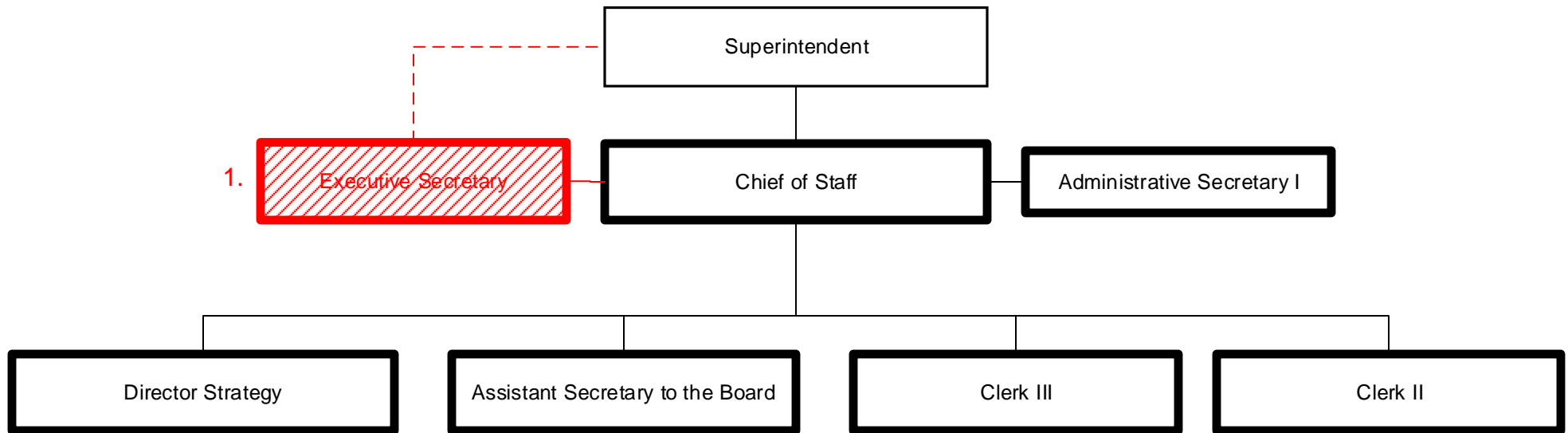


1. Add Executive Assistant to Superintendent

Summary:

General Fund Positions: + 2

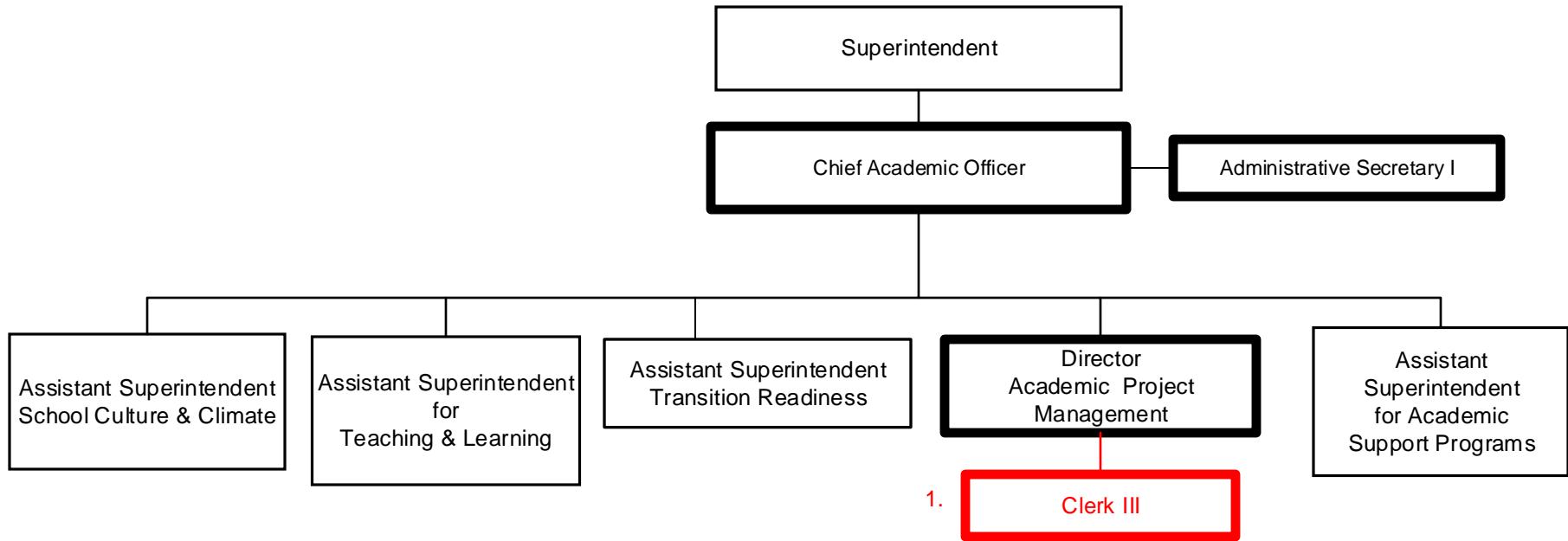
Categorical Fund Positions: 0



1. Delete Executive Secretary effective August 1, 2018

Summary:

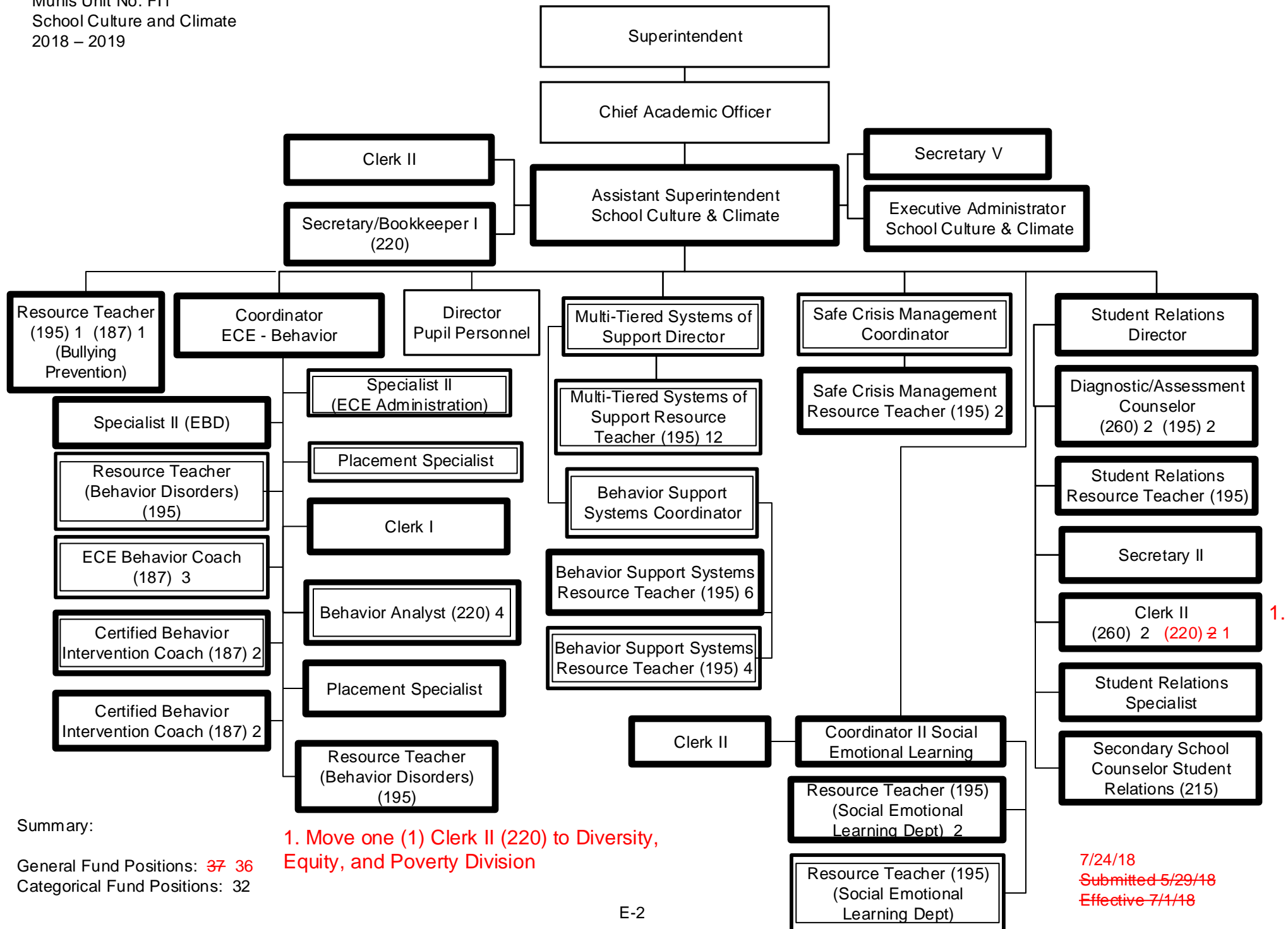
General Fund Positions: ~~7~~ 6
Categorical Fund Positions: 0



1. Add Clerk III

Summary:

General Fund Positions : 3 4
Categorical Fund Positions: 0



4.

Comprehensive Services for Head Start and Early Head Start

Superintendent

Chief Academic Officer

Assistant Superintendent for Teaching & Learning

Director Early Childhood

Secretary II

Early Childhood Operations and Comprehensive Services Specialist

Budget and Management Operations Specialist (Finance and ERSEA)

Early Childhood Compliance Specialist

Associate Principal Early Childhood (230) 3

Associate Principal Early Childhood 2

3.

Coordinator Early Childhood (220) 2

Data Management/Research Technician

Data Management/Research Technician

1.

Coordinator Early Childhood (220) 2

7.

Family Services Specialist/Preschool (187)

Early Childhood Operations Liaison (230)

Accounting Clerk

Family Services Specialist/Preschool (187)

3.

Early Childhood Comprehensive Services Liaison (187) 4

Assistant Area Coordinator (230)

Clerk/Bookkeeper (195)

Early Childhood Comprehensive Services Liaison (187) 4 8

5.

Clerk II (230)

Clerk II (230)

Clerk II (260) 2 (195) 1

Clerk II (230) 2

ERSEA Coordinator (230) 3 2

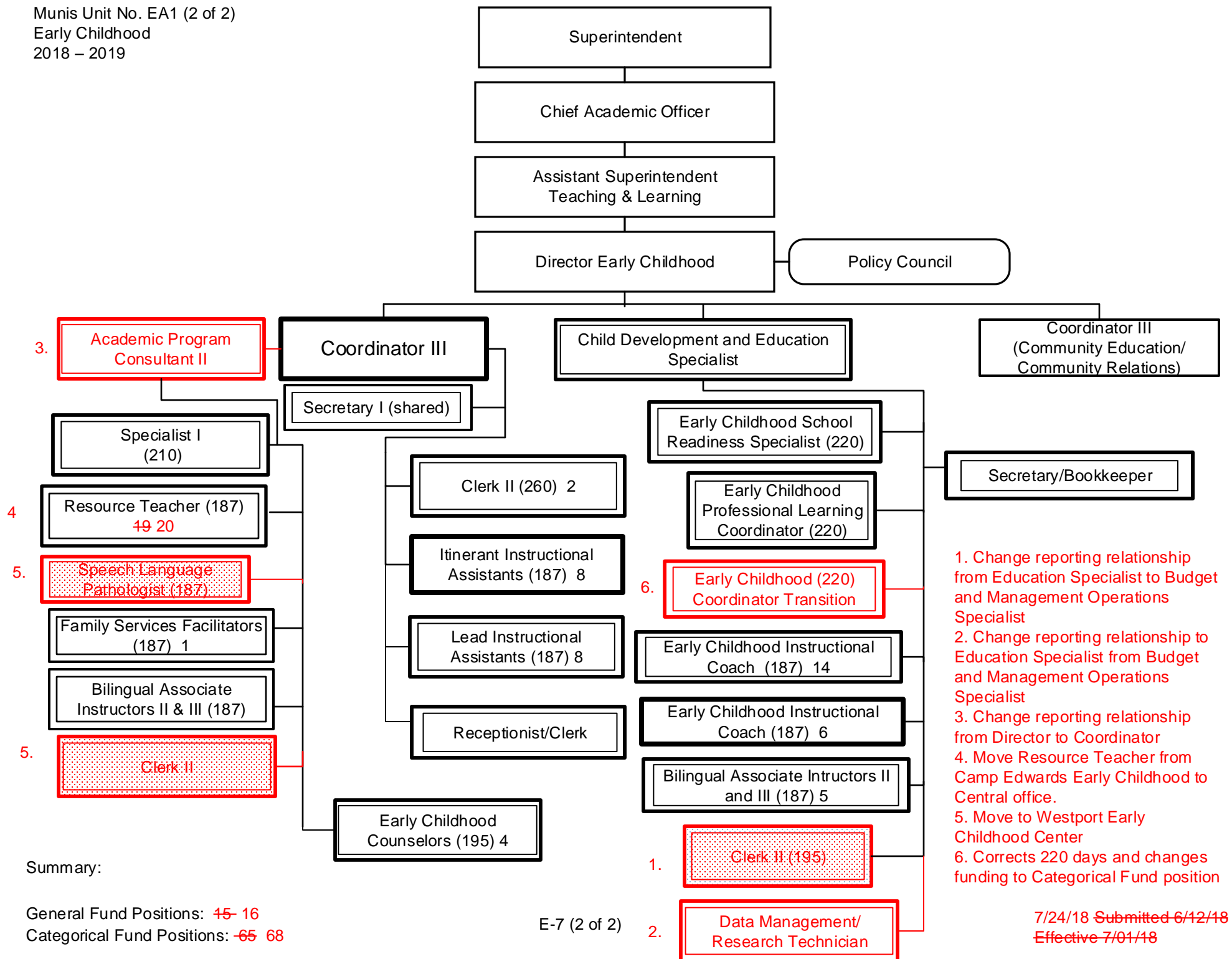
ERSEA Clerk (230) 6 (260) 4

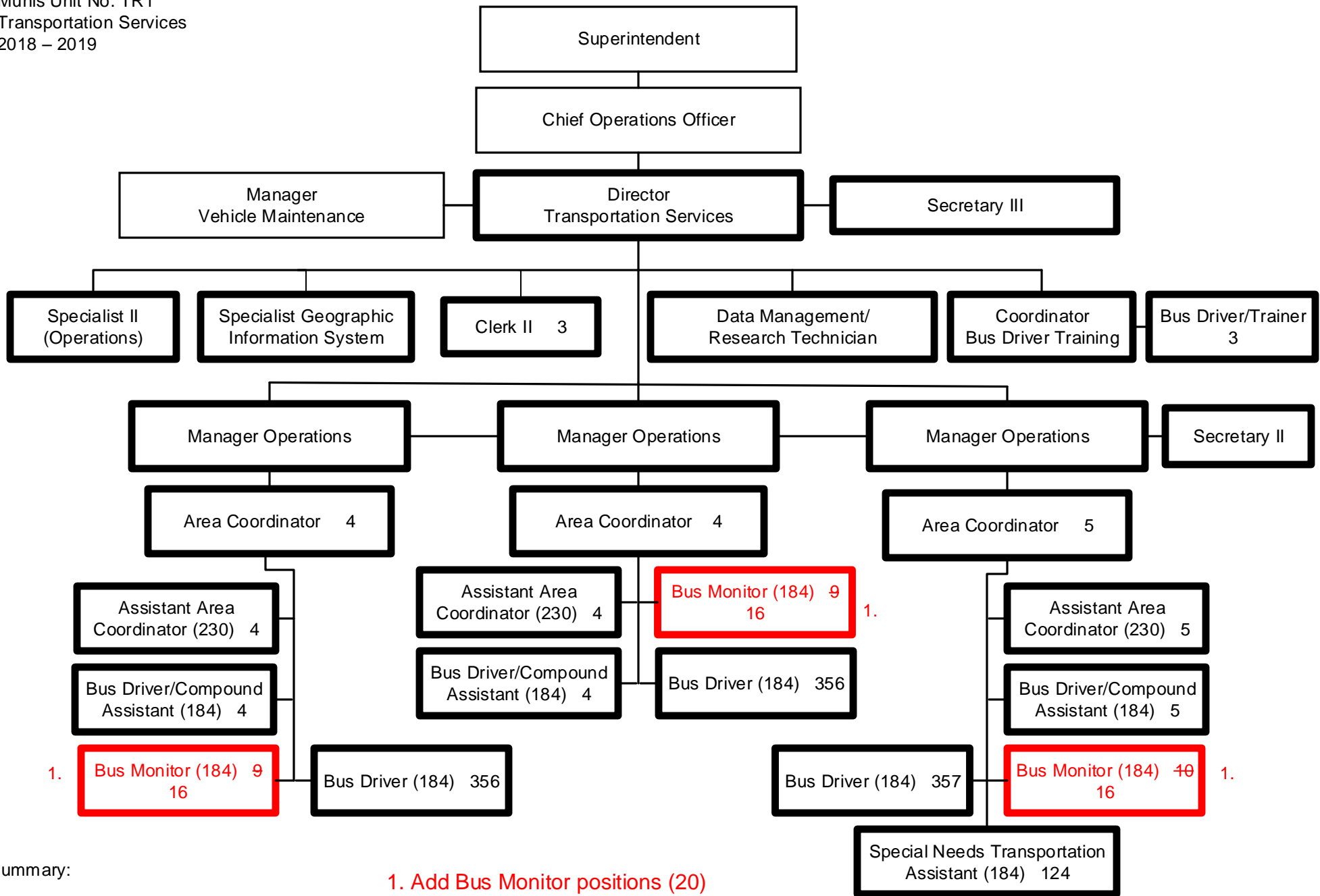
3. Change reporting relationship from Early Childhood Operations & Comprehensive Services Specialist to Early Childhood Compliance Specialist
4. Delete services provided by outside vendor for Head Start services
5. Add four (4) Early Childhood Comprehensive Services Liaison's (187)
6. Delete one (1) ERSEA Coordinator
7. Change Coordinator Early Childhood (22) 2 to Categorical Fund positions

Summary:

General Fund Positions: ~~5~~ 3

Categorical Fund Positions: ~~36~~ 41



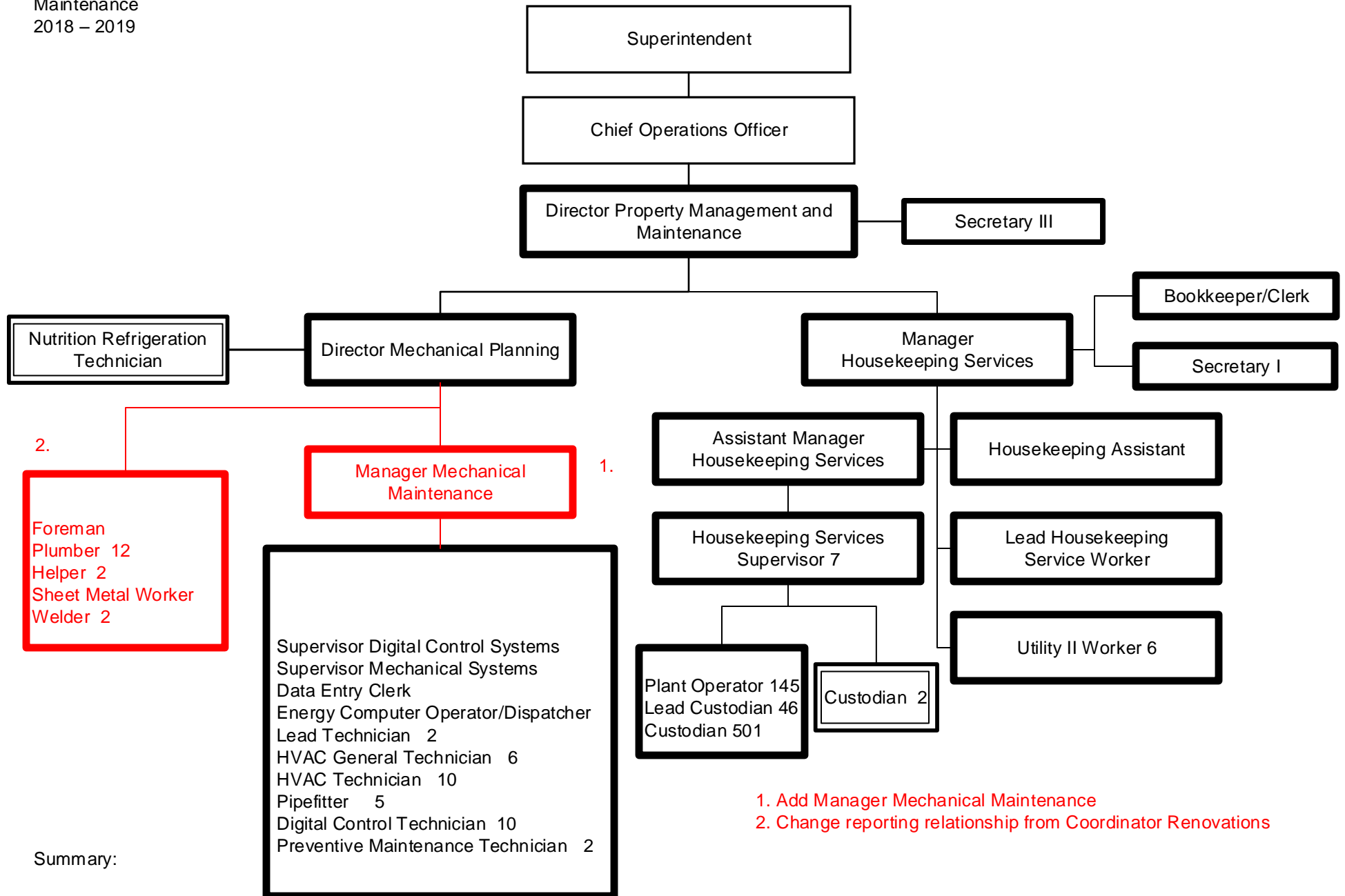


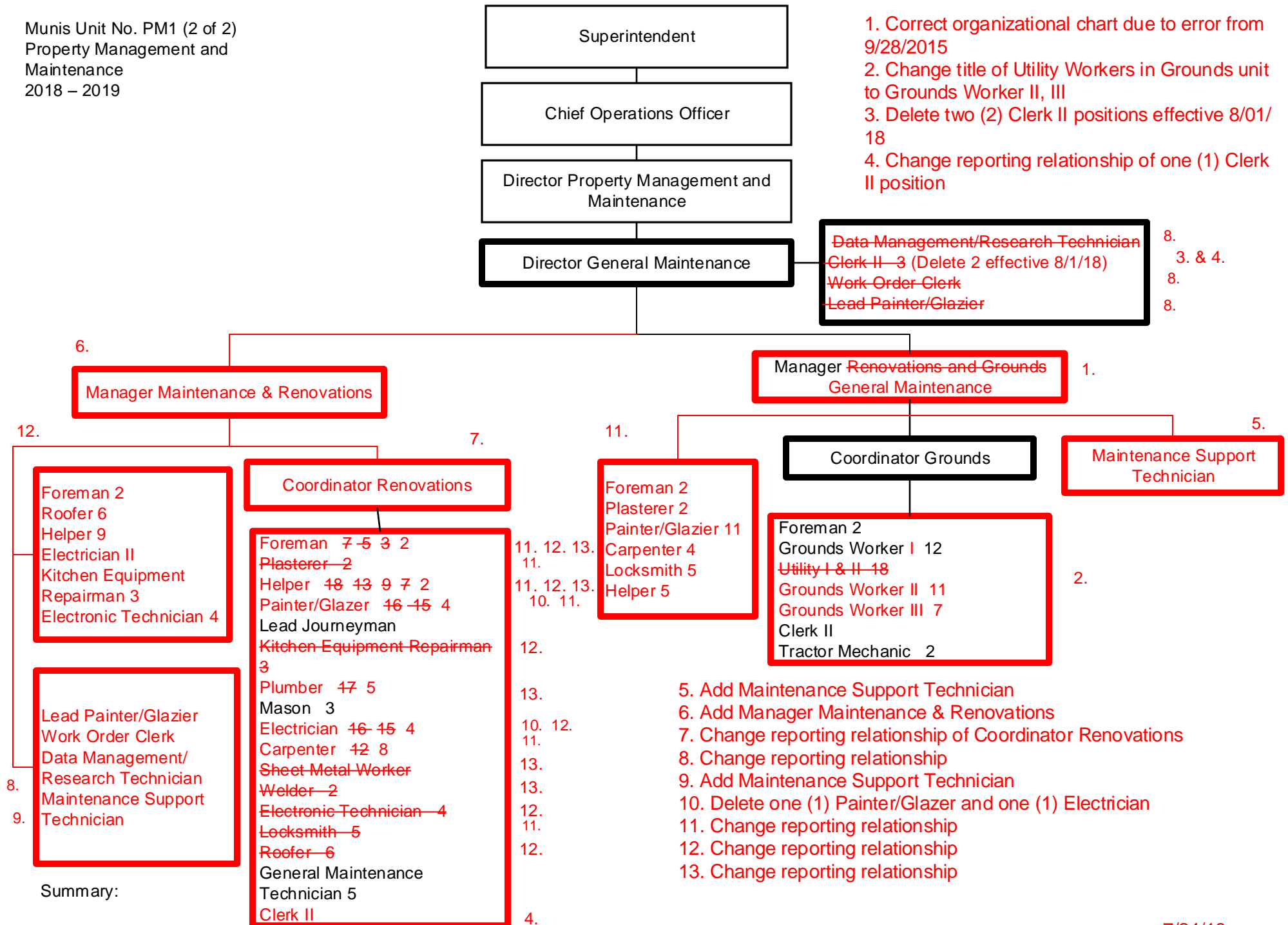
Summary:

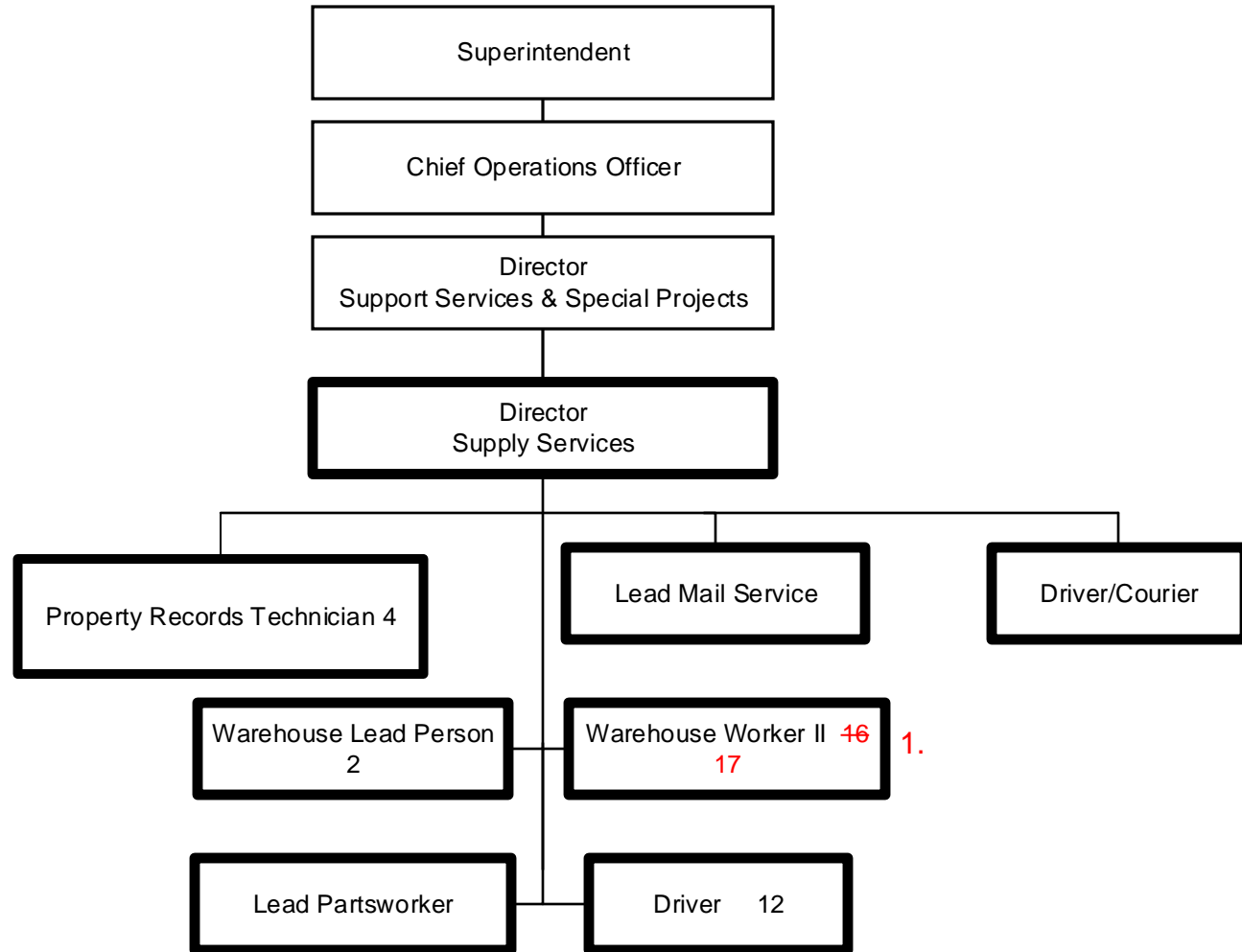
1. Add Bus Monitor positions (20)

General Fund Positions: ~~4276~~ 1296

Categorical Fund Positions: 0







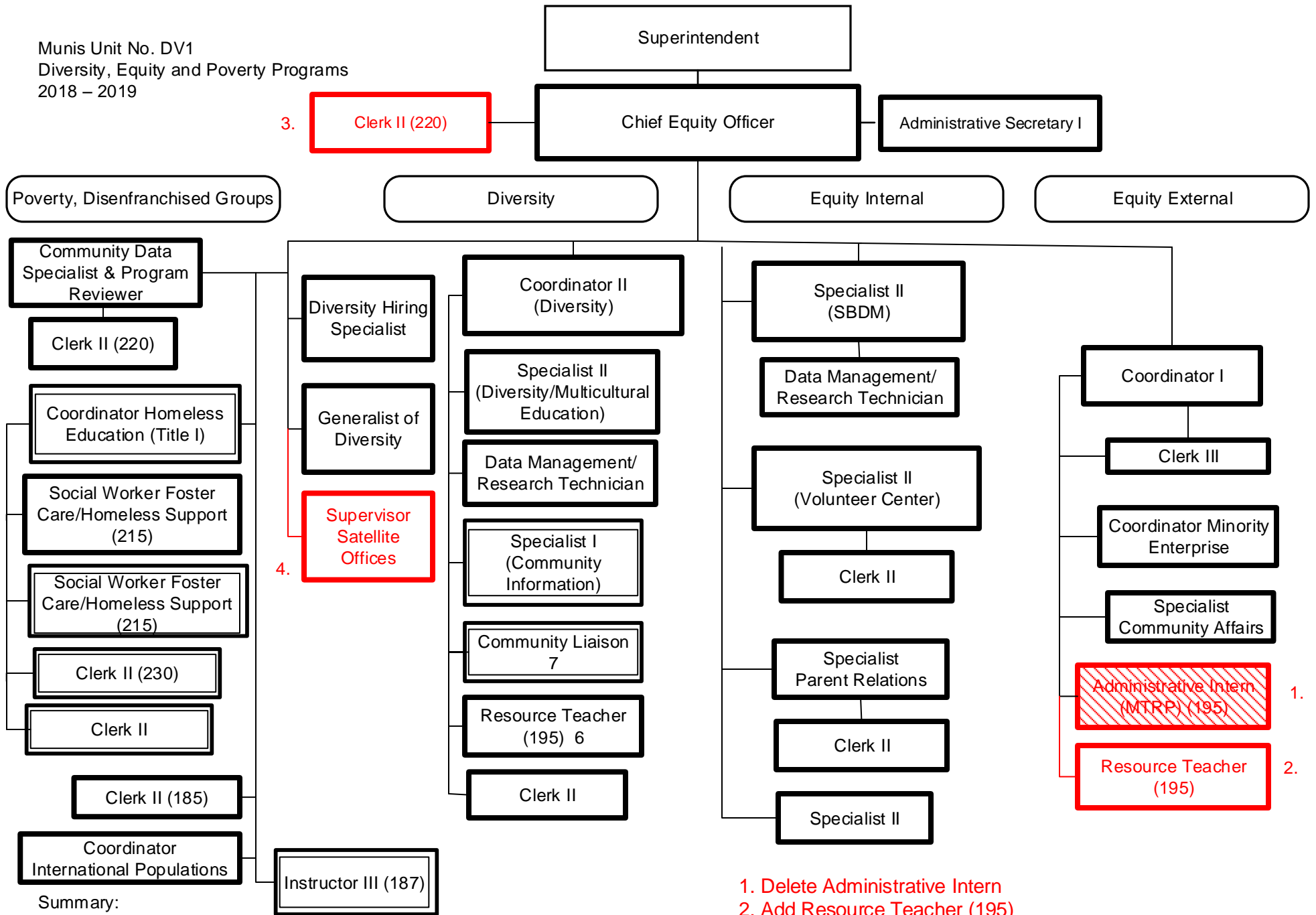
1. Add one (1) Warehouse Worker

Summary:

General Fund Positions: ~~38~~ 39

Categorical Fund Positions: 0

3. Clerk II (220)



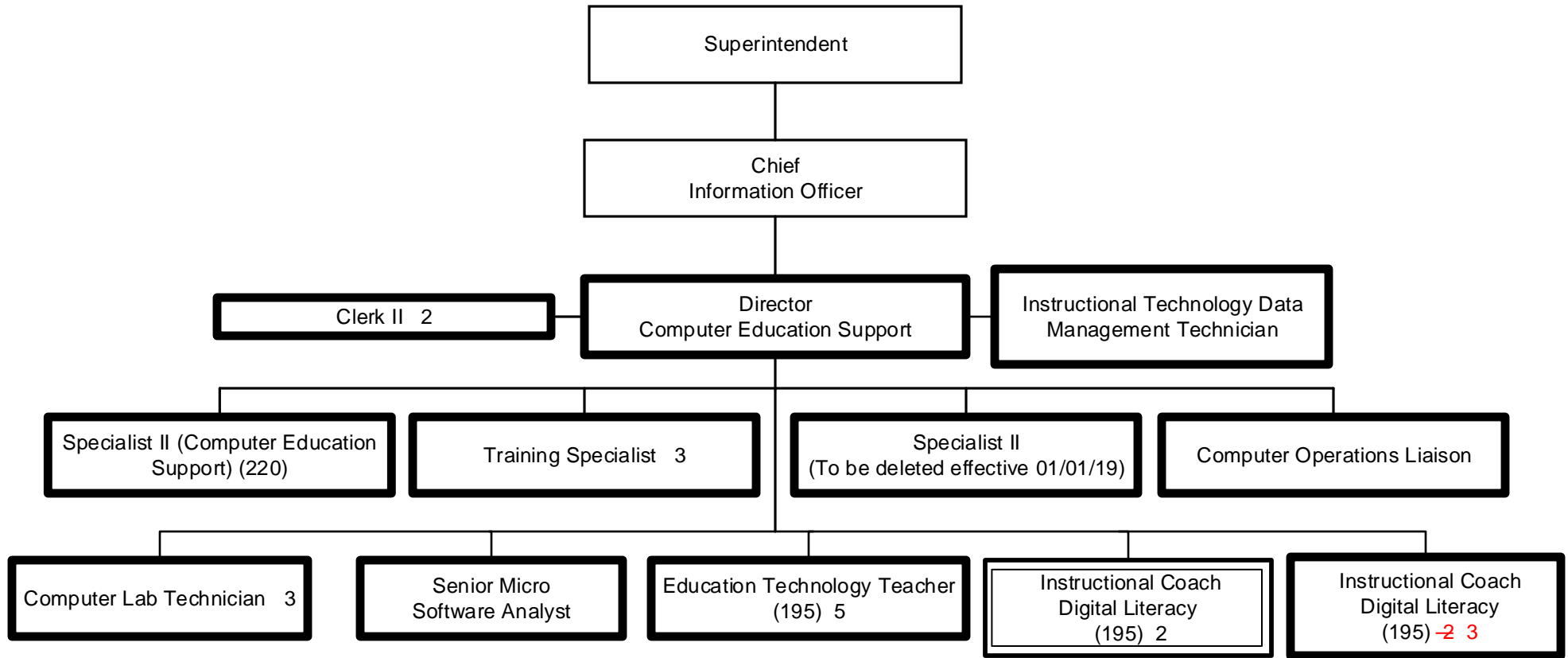
Summary:

General Fund Positions: ~~32~~ 33

Categorical Fund Positions: 13

1. Delete Administrative Intern
2. Add Resource Teacher (195)
3. Move one (1) Clerk II (220) from Diversity, Equity and Poverty
4. Add Supervisor Satellite Offices

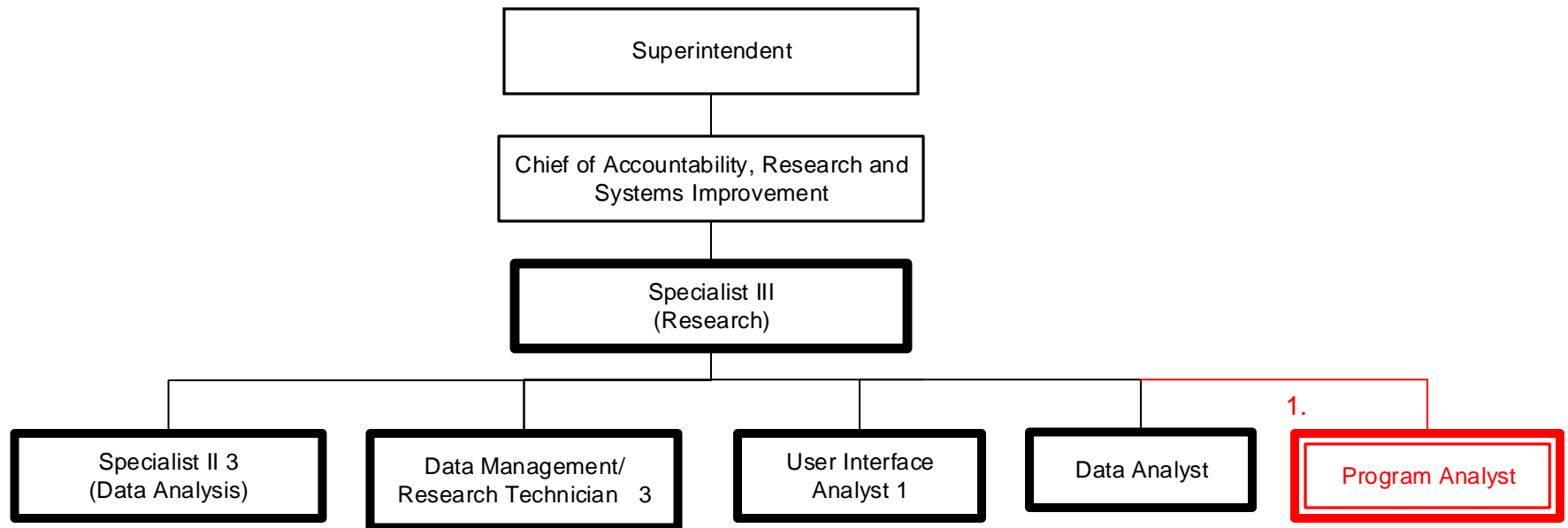
7/24/18
Submitted 5/08/18
Effective 7/01/18



1. Add one (1) Instructional Coach Digital Literacy

Summary:

General Fund Positions: ~~22~~ 23
(changes to ~~24~~ 22 effective 01/01/19)
Categorical Fund Positions: 2



1. Add Program Analyst position grant funded

Summary:

General Fund Positions: 9
Categorical Fund Positions: ~~0~~ 1