

# **Woodford County Adult Education**

Never stop learning.

**Mary Newton**  
**Director of**  
**Adult Education**

859-421-7133

[mary.newton@jessamine.kyschools.us](mailto:mary.newton@jessamine.kyschools.us)

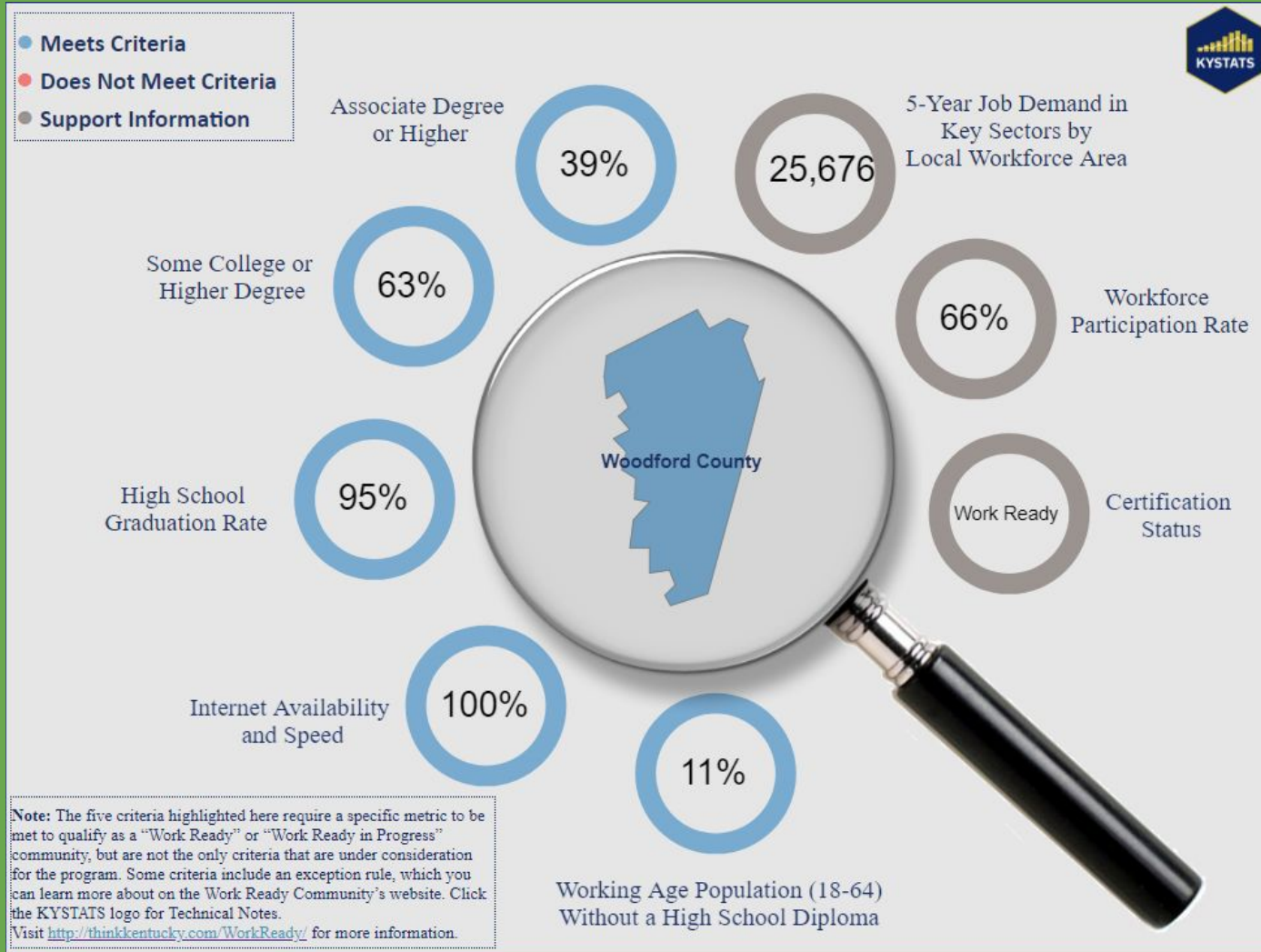
**THERE ARE TWO THINGS I DON'T LIKE**



**CHANGE AND THE WAY THINGS ARE**

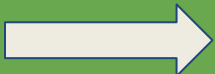
[www.GrumpyCats.com](http://www.GrumpyCats.com) / [www.facebook.com/OfficialGrumpyCat/](https://www.facebook.com/OfficialGrumpyCat/) / @RealGrumpyCat

# Woodford By the Numbers...



# Regional need

Bluegrass (17 counties)	*Total Number of Working Adults (Age 18-64) without a High School or GED® Credential
Anderson	1,320
Bourbon	1,675
Boyle	1,971
Clark	3,051
Estill	1,979
Fayette	19,159
Franklin	3,671
Garrard	1,760
Harrison	1,645
Jessamine	4,043
Lincoln	2,535
Madison	5,381
Mercer	1,580
Nicholas	655
Powell	1,684
Scott	3,156
Woodford	1,581



# Our services

- GED preparation
- English as a Second Language
- Basic skills education
- Career preparation and testing
- Partnerships with Woodford County Library and WCDC

# English as a Second Language

County	Total Number of ELL Adults (18-64) that speak little to no English at home	Percentage of ELL Target Population	County	Total Number of ELL Adults (18-64) that speak little to no English at home	Percentage of ELL Target Population	County	Total Number of ELL Adults (18-64) that speak little to no English at home	Percentage of ELL Target Population
Ballard	0	0%	Floyd	20	0%	Mason	78	0%
Caldwell	0	0%	Morgan	20	0%	Gallatin	88	0%
Clinton	0	0%	Trimble	20	0%	Marion	88	0%
Estill	0	0%	Adair	21	0%	Laurel	93	0%
Hickman	0	0%	Muhlenberg	21	0%	Hopkins	103	0%
Jackson	0	0%	Edmonson	22	0%	Allen	107	0%
Lee	0	0%	Greenup	23	0%	Mercer	120	0%
Leslie	0	0%	Lyon	24	0%	Butler	129	0%
Lewis	0	0%	Garrard	28	0%	Grant	133	0%
McLean	0	0%	Taylor	29	0%	Barren	138	0%
Magoffin	0	0%	Knox	31	0%	Bullitt	140	0%
Menifee	0	0%	Boyd	32	0%	Montgomery	146	0%
Metcalfe	0	0%	Meade	32	0%	Henderson	147	0%
Owen	0	0%	Bell	33	0%	Boyle	148	0%
Owsley	0	0%	Union	33	0%	Oldham	152	0%
Robertson	0	0%	Henry	36	0%	Nelson	167	0%
Spencer	0	0%	Martin	36	0%	Wayne	175	1%
Trigg	0	0%	Whitley	39	0%	Ohio	180	1%
Wolfe	0	0%	Green	45	0%	Pulaski	195	1%
Rockcastle	1	0%	Grayson	46	0%	Russell	198	1%
Harlan	2	0%	Hancock	46	0%	Clark	207	1%
Livingston	2	0%	Fleming	48	0%	Calloway	243	1%
Lincoln	3	0%	Lawrence	48	0%	Campbell	253	1%
Crittenden	4	0%	Logan	50	0%	Madison	276	1%
Knott	5	0%	Clay	51	0%	Christian	279	1%
Anderson	6	0%	Monroe	53	0%	Franklin	342	1%
Fulton	6	0%	Casey	59	0%	Rowan	365	1%
Elliott	7	0%	Washington	60	0%	Scott	390	1%
Cumberland	8	0%	Carter	61	0%	Bourbon	450	1%
Nicholas	8	0%	Larue	61	0%	Hardin	483	1%
Carlisle	9	0%	Webster	61	0%	Woodford	505	1%
Pendleton	9	0%	Harrison	63	0%	Graves	605	2%
Bracken	10	0%	Hart	67	0%	Jessamine	629	2%
Marshall	11	0%	McCreary	67	0%	Daviess	869	3%
Johnson	12	0%	Pike	67	0%	Kenton	1076	3%
Perry	13	0%	McCracken	69	0%	Shelby	1,137	3%
Powell	16	0%	Simpson	69	0%	Boone	1,244	4%
Letcher	17	0%	Breckinridge	72	0%	Warren	2,720	8%
Bath	18	0%	Todd	72	0%	Fayette	6,458	19%
Breathitt	18	0%	Carroll	75	0%	Jefferson	10,911	32%
Total IELCE Funding Available: \$335,657						TOTAL	34,162	100%

Woodford County has the **10th** largest population of non-native English speakers in Kentucky.

Rowan	365	1%
Scott	390	1%
Bourbon	450	1%
Hardin	483	1%
Woodford	505	1%
Graves	605	2%
Jessamine	629	2%
Daviess	869	3%
Kenton	1076	3%
Shelby	1,137	3%
Boone	1,244	4%
Warren	2,720	8%
Fayette	6,458	19%
Jefferson	10,911	32%



# Culture Fair 2018





# Learning About Our Community



ESL students practice common law enforcement interactions with a local police officer

# Financial Impact

## Increased opportunities

Those with a GED or high school diploma earn an average of **\$9,620** more a year than those without the credential

## A lasting family impact..

- For each of our graduates, this means an extra **\$288,600** during their 30-year career.
- For our goal of 19 Woodford graduates, this is a total of **\$5,483,400** during their combined careers



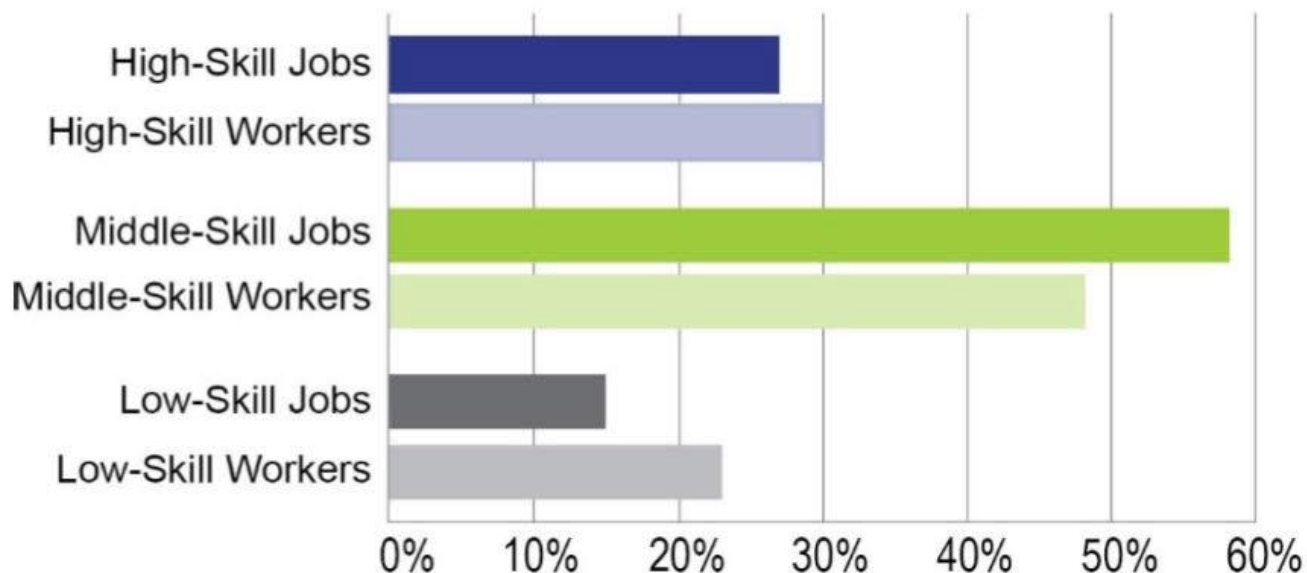
Mom and Dad- 1949

Mom and Dad- 1991



# Jobs to Skills Gap

## Jobs and Workers by Skill Level, Kentucky, 2015



Middle-skill jobs account for 58 percent of Kentucky's labor market, but only 48 percent of the state's workers are trained to the middle-skill level.

*Source: National Skills Coalition analysis of Bureau of Labor Statistics Occupational Employment Statistics by State, May 2015 and American Community Survey data, 2015.*



# Youth Program- ResCare

## ○ Youth Specialist on site

Personal attention for 18-24 year-olds

## ○ Incentives

- Paid GED test fee (\$120)
- \$250 bonus for passing GED
- **Paid work experience**
- Assistance with enrollment in post-secondary or short-term training

## ○ Students placed

- Chiropractor Office
- Optometrist Office
- Assisted Living Facility
- Office jobs (including adult ed)



# Why Adult Education and K-12?

# Why Adult Education and K-12?

- Seamless transition

# Why Adult Education and K-12?

- Increased options for alternative school participants



# Why Adult Education and K-12?

- Over Half of Our Graduates Are Parents of Young Children





(Manual Walters, GED grad at 77 years old)

**Whatever your age,  
Education= Possibilities**



Id)

**Whatever your age,  
Education= Possibilities**

**Mary Newton**  
**Director of**  
**Adult Education**

859-421-7133

[mary.newton@jessamine.kyschools.us](mailto:mary.newton@jessamine.kyschools.us)