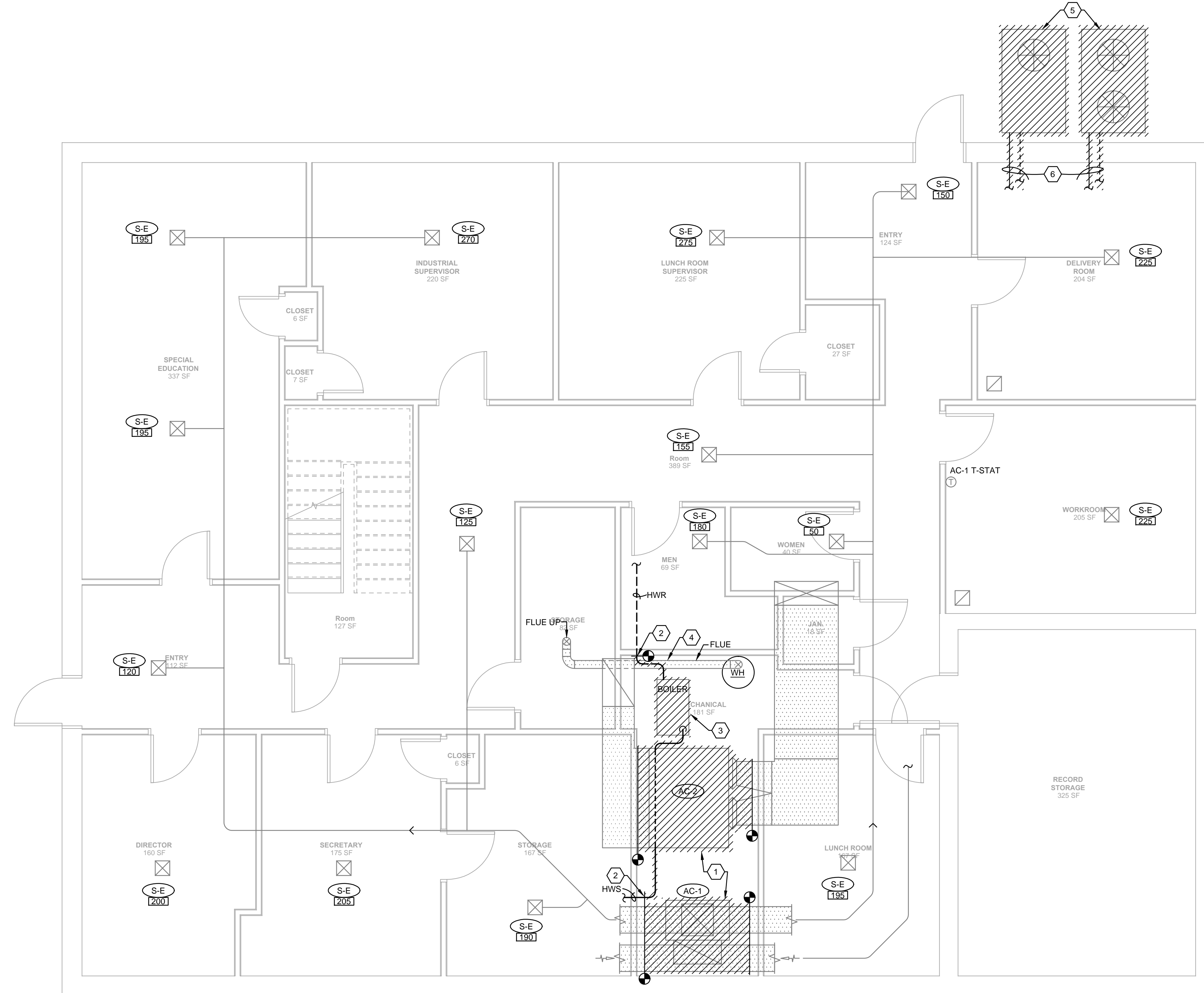


**SHEET NOTES:**

- 1 REMOVE AIR HANDLER, HANGERS, AND ALL ACCESSORIES INCLUDING DUCTWORK TO POINTS INDICATED. PREPARE DUCT FOR RECONNECTION UNDER NEW WORK.
- 2 REMOVE HOT WATER PIPING TO POINTS INDICATED. PIPING WILL BE RECONNECTED TO UNDER NEW WORK.
- 3 REMOVE EXISTING BOILER AND PUMP. REMOVE ASSOCIATED CONTROLS, BREECHING TO POINT INDICATED.
- 4 KEEP WATER HEATER FLUE FOR RECONNECTION UNDER NEW WORK.
- 5 REMOVE EXISTING OUTSIDE CONDENSING UNIT AND ACCESSORIES.
- 6 REMOVE OUTDOOR UNITS TO AC-1 AND AC-2.



**HVAC DEMOLITION GROUND FLOOR PLAN**  
 SCALE: 1/4" = 1'-0"

**SCHEMATIC DESIGN**

CONSTRUCTION DOCUMENTS		
NO	ISSUE	DATE

**Sheet Information**

BG Number	???????
Project Number	1822
Drawn	-
Checked	-
Approved	-
Title	

HVAC GROUND FLOOR PLAN

Sheet  
**MD101**